

July 31, 1967

Planning Commission
County of Maui
P. O. Box 1487
Kahului, Maui

Gentlemen:

At its meeting on July 28, 1967, the Land Use Commission voted to approve the grant of a special permit to the KNUI Broadcasting Company (SP67-45) to construct and operate a standard radio broadcasting transmitter on the west side of Mokulele Highway near Kealia Pond on the Island of Maui, subject to the conditions recommended by the staff.

Enclosed for your information is the staff report.

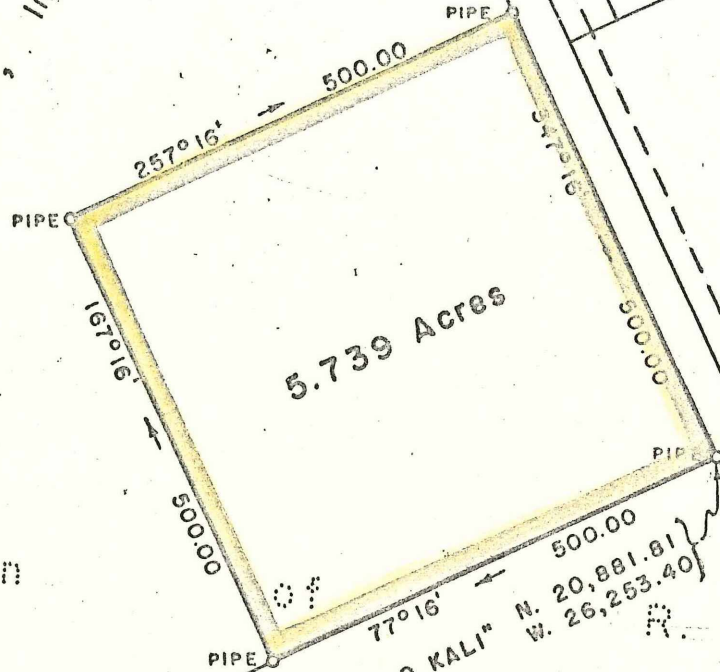
Very truly yours,

RAMON DURAN
Executive Officer

Encl.

cc: Department of Taxation
KNUI Broadcasting Company

Alexander & Baldwin, Inc. - Owner



Scale: 1" = 200'

8140

Portion

"PUU O KALI" N. 20,881.81 W. 26,253.40

Alexander & Baldwin, Inc. - Owner
Kihei Farms, Inc. - Lessee

L. C. Aw.

5230

to

Keeweamohi

KIHEI

KIHEI

BEACH

ROAD

LOTS