

October 12, 1971

Mr. C. Earl Stoner, Jr.
President
Amfac Communities, Inc.-Hawaii
P. O. Box 3230
Honolulu, Hawaii 96801

Dear Mr. Stoner:

The petition by Amfac Communities, Inc.-Hawaii (A71-296) to amend the land use district boundaries from an Agricultural District to an Urban District at Kelawea, Lahaina, Maui, identifiable by Tax Map Key 4-5-15: parcel 10, and portion of parcel 1, was approved by the Land Use Commission at its meeting on October 8, 1971.

Prior to taking action on this petition, the enclosed memorandum was presented to the Commission.

For your information, we are enclosing herewith a copy of Section 2.33, "Performance Time," of the Rules and Regulations of the Commission.

Very truly yours,

TATSUO FUJIMOTO
Executive Officer

Enclosures

cc: Peter Sanborn
Maui Planning Department
Maui Tax Administrator
Maui Board of Water Supply
Chairman of the Board, DLNR
Planning Office, DLNR
Dept. of Transportation
Facilities & Auxiliary Services Branch, DOE
Planning Branch, DAGS
Planning Division, DPED
Tax Maps Recorder, Dept. of Taxation
Property Technical Services, Dept. of Taxation
Land Use Commission

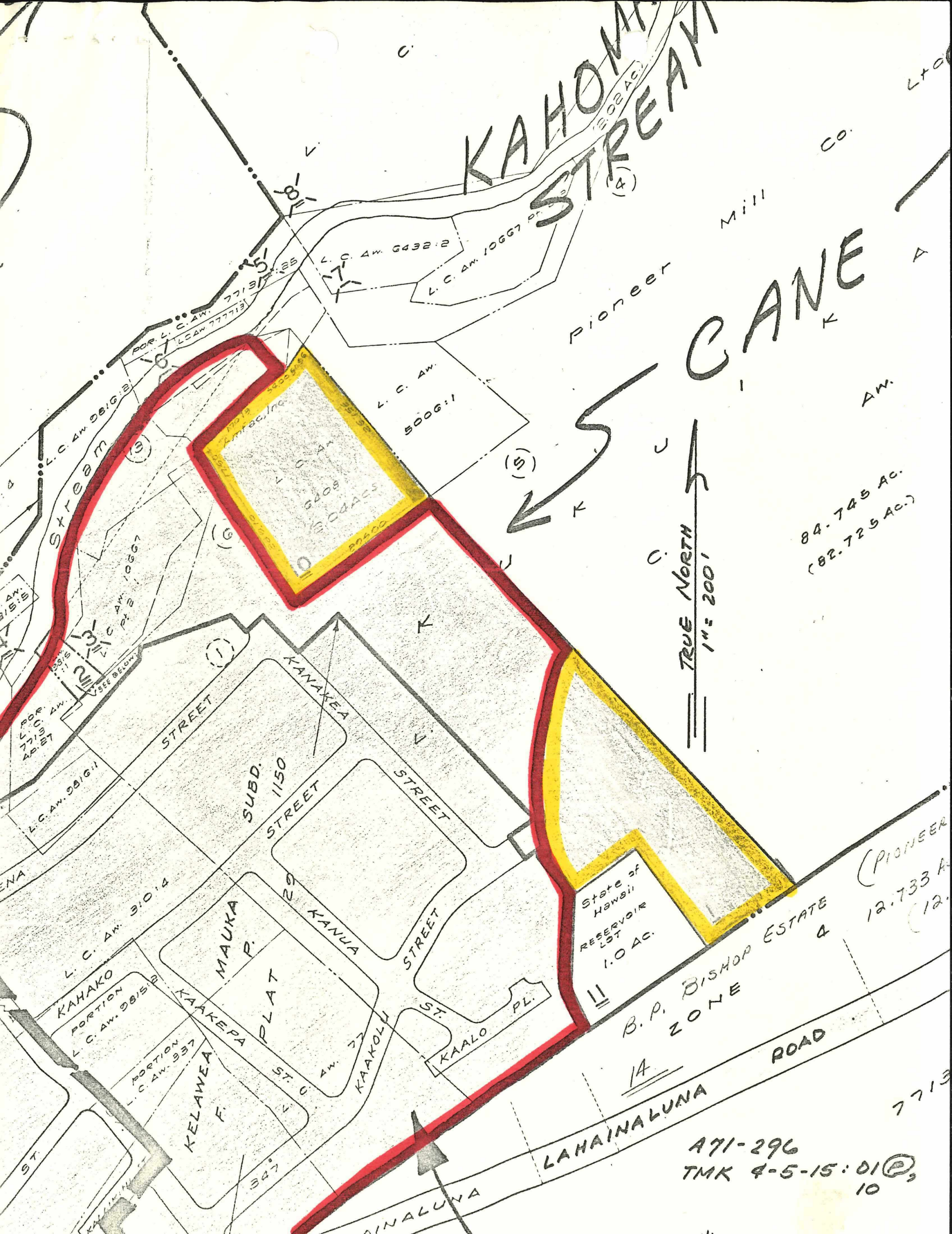
KAHOMAKU STREAM

Pioneer Mill CO.

CANE

84.745 AC.
(82.729 AC.)

TRUE NORTH
1" = 200'



KAHAKO PORTION
L.C. Aw. 2815/2

KELAWEA F.
L.C. Aw. 937

MAUKA P. PLAT

SUBD. 1150

KANUA STREET

KAAKOLU ST.

KAALO PL.

State of Hawaii
RESERVOIR LST
1.0 AC.

B.P. BISHOP ESTATE &
ZONE

LAHAINALUNA ROAD

A71-296
TMK 4-5-15:01(2),
10