

October 12, 1971

Mr. John I. Hanchett
Vice President
Hana Ranch, Inc.
P. O. Box 158
Hana, Hawaii 96713

Dear Mr. Hanchett:

At its meeting on October 8, 1971, the Land Use Commission took action on the petition by Hana Ranch, Inc. (A71-293) as follows:

1. approved the reclassification of the 20-acre area identified as TMK 1-3-04: portion of Parcel 1 from an Urban to an Agricultural designation;
2. approved the request to reclassify approximately 20 acres of land identified as TMK 1-4-05: 1 from an Agricultural to an Urban designation; and
3. denied the request to designate approximately 19 acres identified as TMK 1-4-06: 1 from an Agricultural to an Urban designation.

Prior to taking action on this petition, the enclosed memorandum was presented to the Commission.

For your information, we are enclosing herewith a copy of Section 2.33, "Performance Time", of the Rules and Regulations of the Commission.

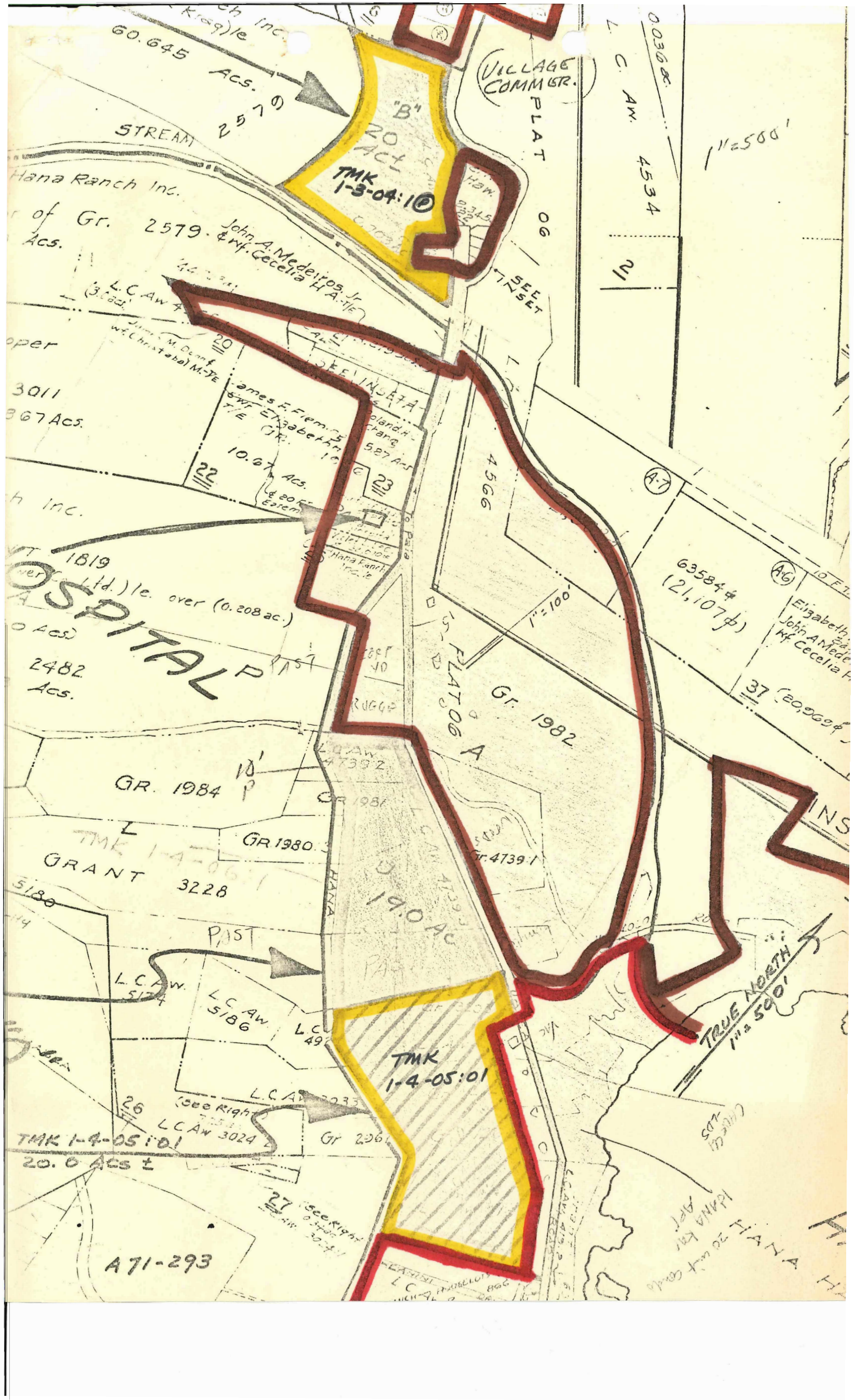
Very truly yours,

TATSUO FUJIMOTO
Executive Officer

Enclosures

cc: Maui Planning Department
Maui Tax Administrator
Maui Board of Water Supply
Chairman of the Board, DLNR
Planning Office, DLNR
Dept. of Transportation

Facilities & Aux. Svcs. Br., DOE
Planning Branch, DAGS
Planning Division, DPED
Tax Maps Recorder, Dept. of Tax.
Property Technical Services, "
Land Use Commission



60.645 Acs. 2579

VILLAGE COMM STR.

L. C. AW. 4534

112500'

Hana Ranch Inc.

John A. Medeiros Jr. & Mf. Cecelia H.A. (17)

TMK 1-3-04:10

James F. Fleming & Mf. Elizabeth M. TE

HOSPITAL PAST
over (0.208 ac.)

2482 Acs.

GR. 1984

GRANT 3228

L.C. AW. 5174

L.C. AW. 5186

L.C. AW. 3024

TMK 1-4-05:01
20.0 Acs ±

A71-293

4566

PLAT 06

GR. 1982

TMK 1-4-05:01

TRUE NORTH
1"=500'

HANA RANCH