

March 8, 1971

Mr. Robert O. Ohata
Housing Consultant
County of Maui
195 Ku Drive
Wailuku, Hawaii 96793

Dear Mr. Ohata:

The petition by Hale Mahaolu and the County of Maui (A70-258) to amend the Land Use District Boundaries from an Agricultural District into an Urban District, at Paia, Maui, identifiable by Tax Map Key 2-5-05: parcel 21, was approved by the Land Use Commission at its meeting on March 5, 1971.

Prior to taking action on this petition, the enclosed memorandum was presented to the Commission.

For your information, we are enclosing herewith a copy of Section 2.33, "Performance Time," of the Rules and Regulations of the Commission.

Very truly yours,

RAMON DURAN
Executive Officer

Enclosures 3

cc: Robert Yokoyama
Maui Planning Dept.
Maui Tax Administrator
Board of Water Supply, County of Maui
Tax Maps Branch, Dept. of Tax.
Property Technical Services, Dept. of Tax.
Planning Office, DLNR
Board of Land & Natural Resources
Facilities & Auxiliary Svcs. Br., DOE
Dept. of Transportation
Planning Division, DPED
Planning Branch, DAGS
Land Use Commission

The Denbigh
College - le.
0.27 Ac.

KUAU

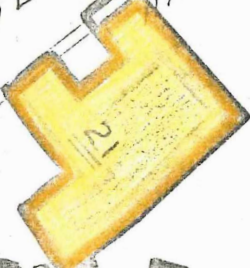
KUAU

0.84 ac.

NORTH
1" = 1000'

PAIA

SEC. ANA



LOWER

Trucking &
Storage, Inc. 14

County of Maui - 11,543 &

32.186 Acc.

Plant

Kahului Trucking
& Storage, Inc. 9.31 Acc.

Deed: 362.95 acs.

PAIA REPORT
VILLAGE SUB.
see below

FLAT OF

REPORT
FOR
Education

2.94 Accs.

Kahului Trucking
& Storage, Inc.

MILL
See Inset A
Id. Ct. App.
110
275
54

SEE ABOVE FOR LES
(County of Maui)
(2500 ft. of 0.051 ac.)
TANK SITE

SEE ABOVE FOR

43
430
431

