

September 23, 1975

City Planning Commission
Municipal Building
650 South King Street
Honolulu, Hawaii 96813

Attention: Mr. Robert R. Way
Chief Planning Officer

Gentlemen:

At its meeting on September 22, 1975, the Land Use Commission voted to approve a special permit to Oceanic Properties, Inc. (SP75-206) to operate a private sanitary landfill within the Agricultural District at Waipio, Ewa, Oahu, Tax Map Key 9-5-03; portion of 1; subject to the conditions as set forth by the City Planning Commission, and subject also to the representations made by the petitioner in the original petition.

A copy of the staff memorandum is enclosed for your information.

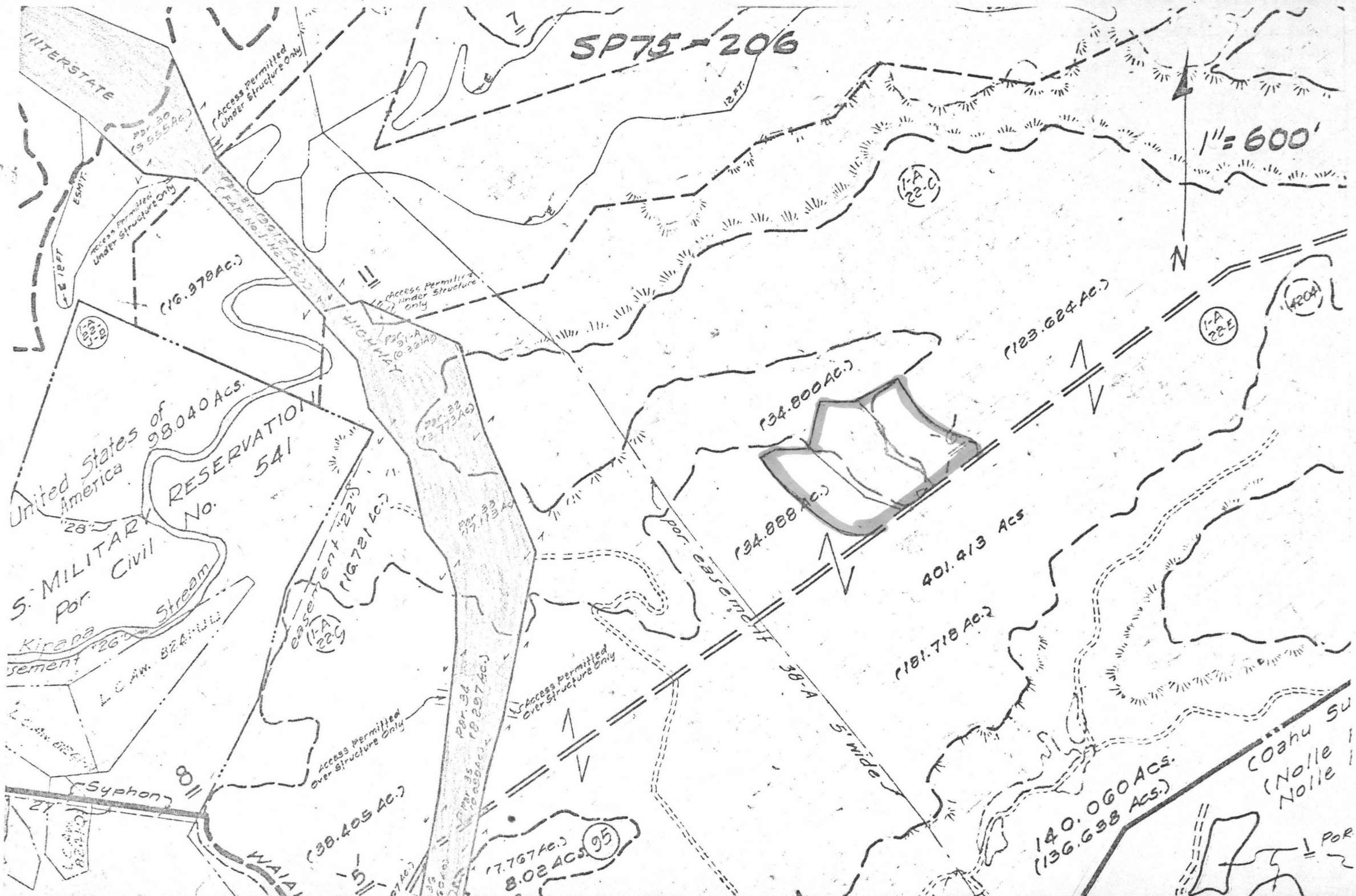
Very truly yours,

AH SUNG LEONG
Acting Executive Officer

Encls.
cc: Oceanic Properties, Inc.
Real Property Tax Assessor, Dept. of Tax.
Tax Maps Recorder, Dept. of Tax.
Property Technical Office, Dept. of Tax.

SP75-206

1" = 600'



INTERSTATE
 par. 30
 (3555 AC.)
 Access Permitted Under Structure Only

(16.978 AC.)
 par. 31
 (3212 AC.)
 Access Permitted Under Structure Only

Access Permitted Under Structure Only

United States of America
 RESERVATION No. 541
 98,040 ACs.

S. MILITARY Reservation
 for Civil

Kiripaa Stream
 Cement
 L.C. No. 824111

par. 32
 (16.781 AC.)
 (1A 229)

par. 32
 (27.734 AC.)

par. 33
 (27.173 AC.)

(34.800 AC.)

(34.888 AC.)

401.913 ACs

(181.718 AC.)

140.060 ACs.
 (136.698 ACs.)

Coahu Su
 (Nolle Nolle)

(7.767 AC.)
 (8.024 AC.) (95)

(38.405 AC.)

Syphon

WAIANA

par. 35
 (29.297 AC.)

Access Permitted Over Structure Only

5' wide

par