



ORIGINAL

June 6, 2008
2004.33.8000 / 08P-197

Mr. Henry Eng, Director
Department of Planning and Permitting
City and County of Honolulu
650 South King Street, 7th Floor
Honolulu, HI 96813

RECEIVED
SEP 12 2008
STATE OF HAWAII
LAND USE COMMISSION

DEPT OF PLANNING
AND PERMITTING
CITY & COUNTY OF HONOLULU

'08 JUN 17 AM 11:18

RECEIVED

Dear Mr. Eng:

**Response to Discussions on May 29, 2008 Between
Department of Planning and Permitting and Grace Pacific**

On behalf of Grace Pacific, we are writing in response to discussions between your staff and Grace Pacific on May 29th. The items requiring follow-up by Grace Pacific are:

- 1) Clarification of the plans to remove the industrial activities from the Lower Processing Site (Parcel 4), and to relocate certain operations to the Existing Quarry (Parcel 82).
- 2) Revising the Final Grading Plan of May 2008 to reflect flatter slopes below the 350-foot elevation on the Makakilo and Kunia faces of the existing quarry area.
- 3) Updating Exhibits 2-1 through 2-9 "Visual Model of Quarry Activity in Five Year Stages," Appendix E to the Engineering Report Amendment, Exhibit K to the 2007 Application. Note that the location of the viewpoint for Exhibit 2-2 will be changed from Kapolei Regional Park to Fort Barrett Road, as requested.
- 4) Examples of Visually Mitigative Sustainable Slopes created by Eric Pickle in his work with Goodfellow Brothers in Washington State and in Hawaii.

Honolulu
Bangkok
Boulder
Guam
Hong Kong
Manila
Seattle
Shenzhen
Singapore

We are addressing items 1) and 2) in this submittal. We hope to have the responses for items 3) and 4) submitted early next week.

- 1) **Clarification of the plans to remove the industrial activities from the Lower Processing Site (Parcel 4), and to relocate certain operations to the Existing Quarry (Parcel 82) (Parcel 82).**

Discussions in January of this year began with the concept of moving all operations from the Lower Processing Site to the Existing Quarry.

Upon further reflection, Grace Pacific now believes that certain operations would be better suited for relocation to Campbell Industrial Park. The operations are the night/weekend operation of the Hot Mix Asphalt Plant and the Shop operation in support of Construction equipment.

Grace Pacific further believes that relocating the existing Hot Mix Asphalt Plant to Campbell Industrial as soon as practical upon approval of the Application addresses the concerns of the quarry's neighbors. It is anticipated that the relocated Hot Mix Plant at Campbell Industrial would operate on a 24 hour/ 7 day basis, until a new Hot Mix Plant is purchased and set up in the Existing Quarry approximately three years later. Thereafter the Hot Mix Asphalt Plant at Campbell Industrial would service night and weekend operations, and the Hot Mix Asphalt Plant in the Existing Quarry would service weekday operations. Grace Pacific believes this is the best compromise available between environmental concerns and economic considerations. Relocating the Hot Mix Plant to Campbell Industrial Park removes a source of noise and air quality impacts from the community. But in three year's time, splitting the Hot Mix plant operation between Campbell Industrial Park and the quarry will greatly reduce costs by eliminating the need to transport large volumes of aggregate from the quarry to Campbell Industrial Park. In deference to the quarry's neighbors, this solution

- removes the Hot Mix Plant from Farrington Highway and the abutting residential communities,
- eventually relocates daytime Hot Mix Plant operations away from the community to an area in the existing quarry that is well buffered by the quarry walls and the H-1 Freeway, and
- locates nighttime and weekend Hot Mix Plant operations in the industrial park where they will not constitute an adverse impact.

The spreadsheet attached to Grace Pacific's April 21st submittal has been revised to clarify the above-described transition, and is attached to this submittal with a revised date June 6, 2008 date.

The tables below use exhibits from the Application, identifying the operations on the Processing Site and Existing Quarry, to further clarify the removal of operations from the Processing Site.

Mr. Henry Eng, Director
 June 6, 2008
 2004.33.8000 / 08P-197
 Page 3

Please refer to Figure 10 of April 2007 Application "Existing Structures and Parking in Processing Site."

Description	Comments	Disposition	Relocate Operation To	Estimated Cost
Lab and Testing Bldg		Remove building	Halawa/Airport Industrial Area	
Trucking Office		Remove building	Existing Quarry (Parcel 82)	Include with office
Employee Parking		Remove parking	Existing Quarry (Parcel 82) (existing parking area)	
Ready Mix Batch Plant		Remove plant	Campbell Industrial Park	Remove existing plant \$250k
Hot Mix Asphalt Plant	Re-characterize operation as week day operation, and weekend/ night operation	Remove existing plant from Processing Site	Existing plant goes to Campbell Industrial for night and weekend work. Purchase new plant for weekday operation in Existing Quarry (Parcel 82).	Existing plant relocation cost \$4.0mm. New plant cost \$6.3mm
Finish Screening Plant		Remove existing plant (demolition)	Purchase new plant for Mon - Sat daytime operation (per Section 5.2 of Application)	Remove existing plant \$500k. New plant cost included in new Primary Plant cost of \$22mm.
Weight Station		Remove scale	Existing Quarry (Parcel 82) install additional scale	Not significant
Conveyor Belt from Tunnel		Remove existing conveyors (demolition)	Not applicable	
Visitor Parking		Remove parking	Existing Quarry (Parcel 82) (existing parking area)	
Equipment Parking		Remove parking	Campbell Industrial or Sand Island	
Training Center		Remove trailer	Kapolei office	
Maintenance Shop	Re-characterize operation as Quarry Shop and Construction Shop	Remove existing Shop from Processing Site	New Shop for Quarry equipment in Existing Quarry (Parcel 82). Construction Shop set up at Campbell Industrial or Sand Island	Remove old Shop \$1mm. New Quarry Shop \$2.25mm New Construction Shop \$2.25mm
Tire Storage Shop		Remove tire storage	Moves with Construction Shop	
File Storage trailer		Remove trailer	Campbell Industrial	
Admin/Sales Office		Remove office	New office in Existing Quarry (Parcel 82)	New office \$500k

Please refer to Figure 9 of April 2007 Application "Existing Structures and Parking in Quarry Site."

Description	Comments	Disposition	Relocate Operation To	Estimated cost
Equipment Parking	Remains onsite			
Primary Jaw Crusher, Secondary Crusher, Secondary Screening	Collectively, the "Primary Crushing and Screening Plant"	Remove existing plant (demolition)	Purchase new plant for Mon - Sat daytime operation (per Section 5.2 of Application)	Remove existing plant \$500k. New plant cost of \$22mm includes new Finish Plant.
Recycle, Crushing and Screening	Plant remains onsite			
Field Office, Employee Lounge	Replace with Admin/Sales/ Trucking/ Employee Lounge			Cost noted previously, \$500k
Employee Parking	Relocate near new Office			
Scale House	Remains onsite, add Processing Site scale			
Visitor Parking	Remains onsite			

- 2) **The Revised Final Grading Plan of May 2008, Figure 4, "Overall Site Plan" (Closure Grading Plan) has been revised as of June 6, 2008 to reflect flatter slopes below the 350 foot elevation on the Makakilo and Kunia faces of the existing quarry area, as requested.**

The table included in Grace Pacific's May 23rd letter, reconciling the Quarry and Landscape Grading acreages has been updated below to reflect the flattening of the slopes:

	Quarry	Landscape Grading	Total
Expansion Area (parcel 74)			
April 2007 application	33.5 acres	14.7 acres	48.2 acres
June 2008 revision	20.6 acres	44.0 acres	64.6 acres
Existing Area (parcel 82)			
April 2007 application	94.0 acres	13.0 acres	107.0 acres
June 2008 revision	78.4 acres	41.2 acres	119.6 acres

Mr. Henry Eng, Director
June 6, 2008
2004.33.8000 / 08P-197
Page 5

Note that the following figures and exhibits in Appendix B to the Engineering Report Amendment, Exhibit K to the 2007 Application, have been updated to reflect this change:

Exhibits 1, 2, 3, and 4, "Metes and Bounds" for Parcels 74 and 82, revised June 2008

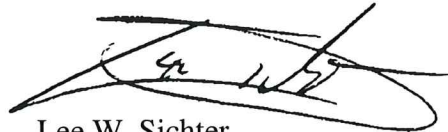
Figure 5a "Closure Grading Plan with Cross Section Index," revised June 6, 2008

Figures 5b(4), 5b(8) "Cross Sections DD, HH," revised June 2008

Thank you for the opportunity to respond to your comments. Should you have any questions about the information provided herein, please call me at 521-5361 or Bob Creps at 674-5201.

Very truly yours,

BELT COLLINS HAWAII LTD.

A handwritten signature in black ink, appearing to read 'Lee W. Sichter', written over a horizontal line.

Lee W. Sichter
Principal Planner

LWS:lf

Enclosures

cc: Robert Creps, Grace Pacific Corporation

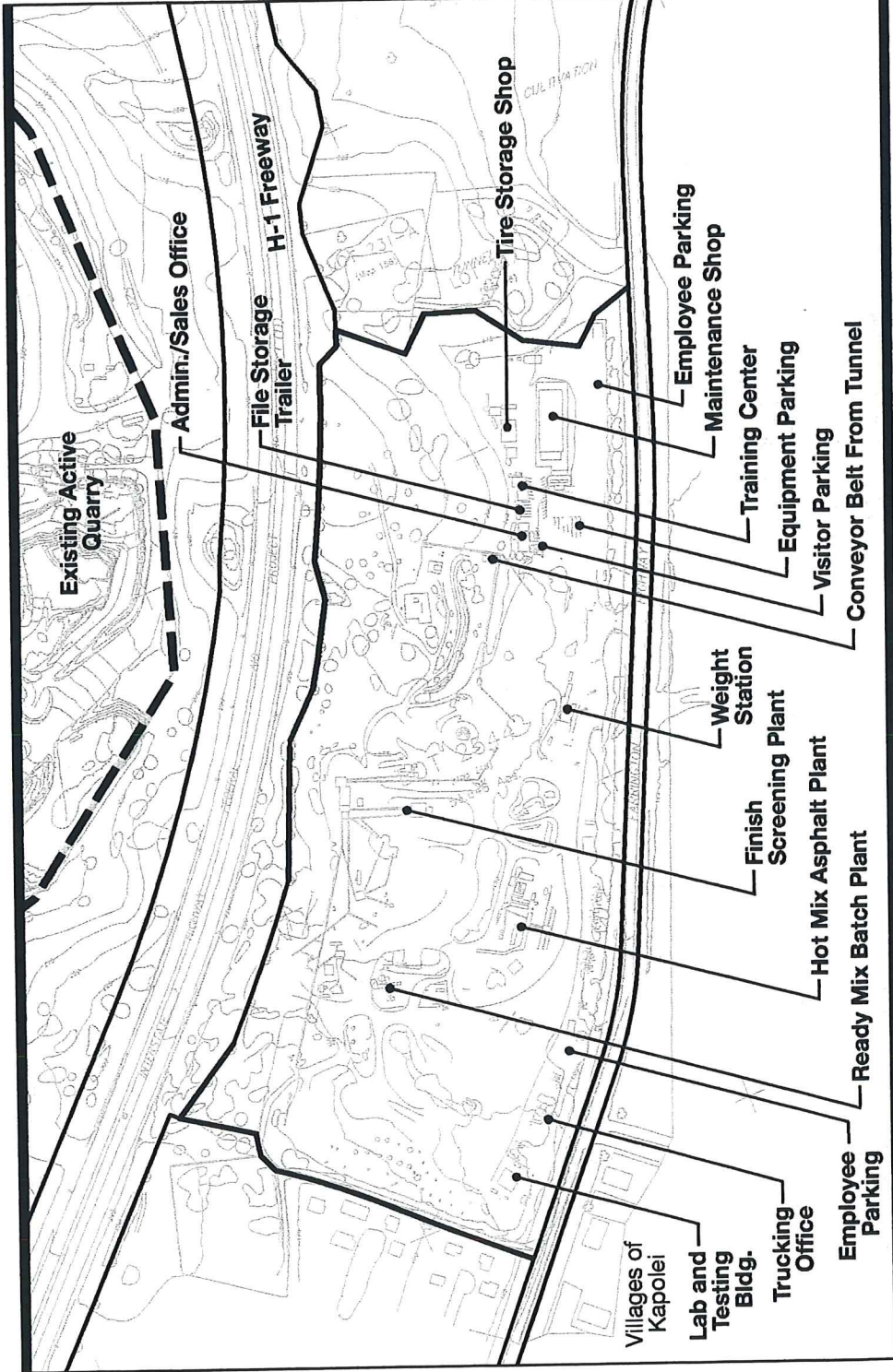
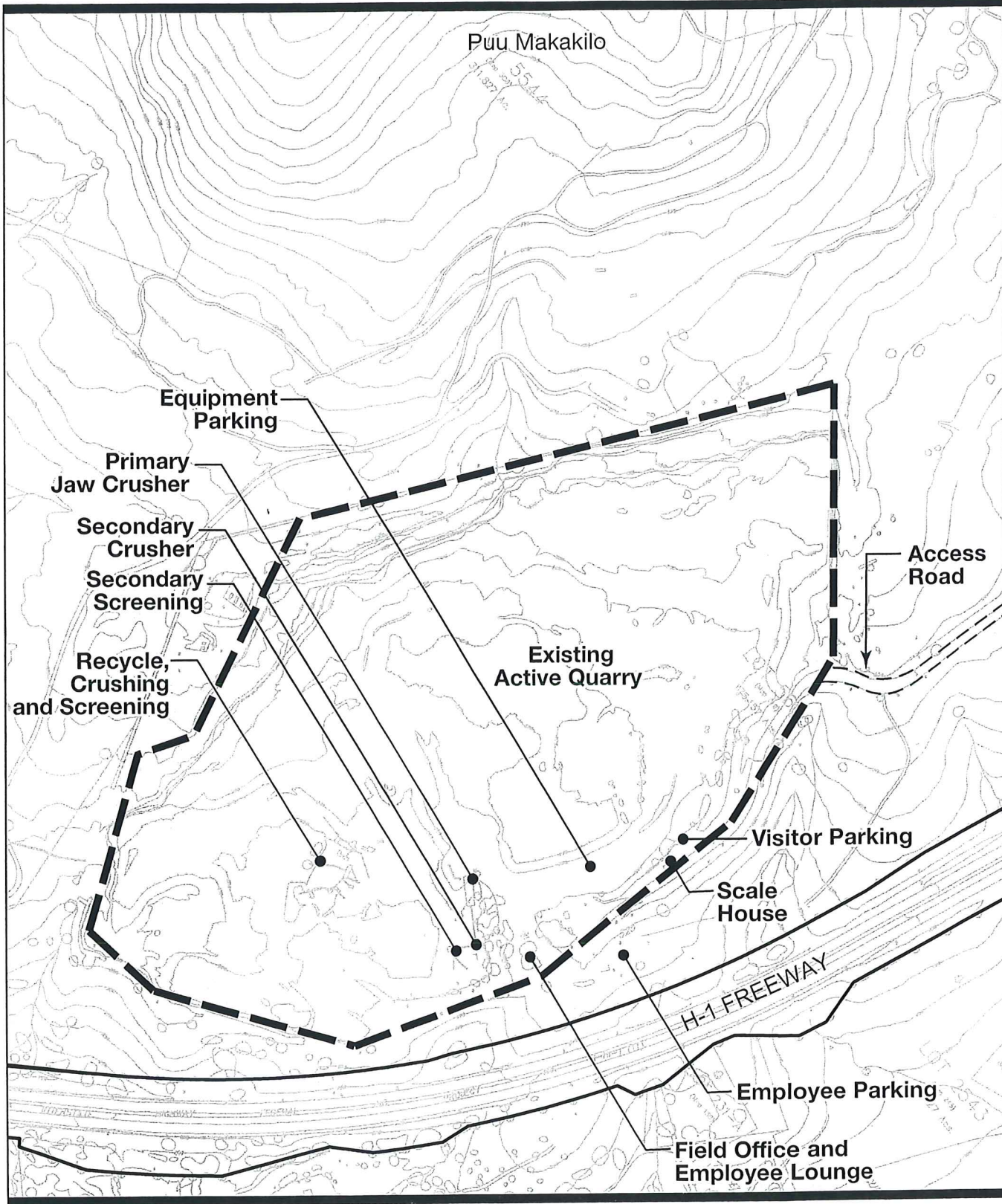


Figure 10
EXISTING STRUCTURES AND
PARKING IN PROCESSING SITE

Ewe, Oahu, Hawaii



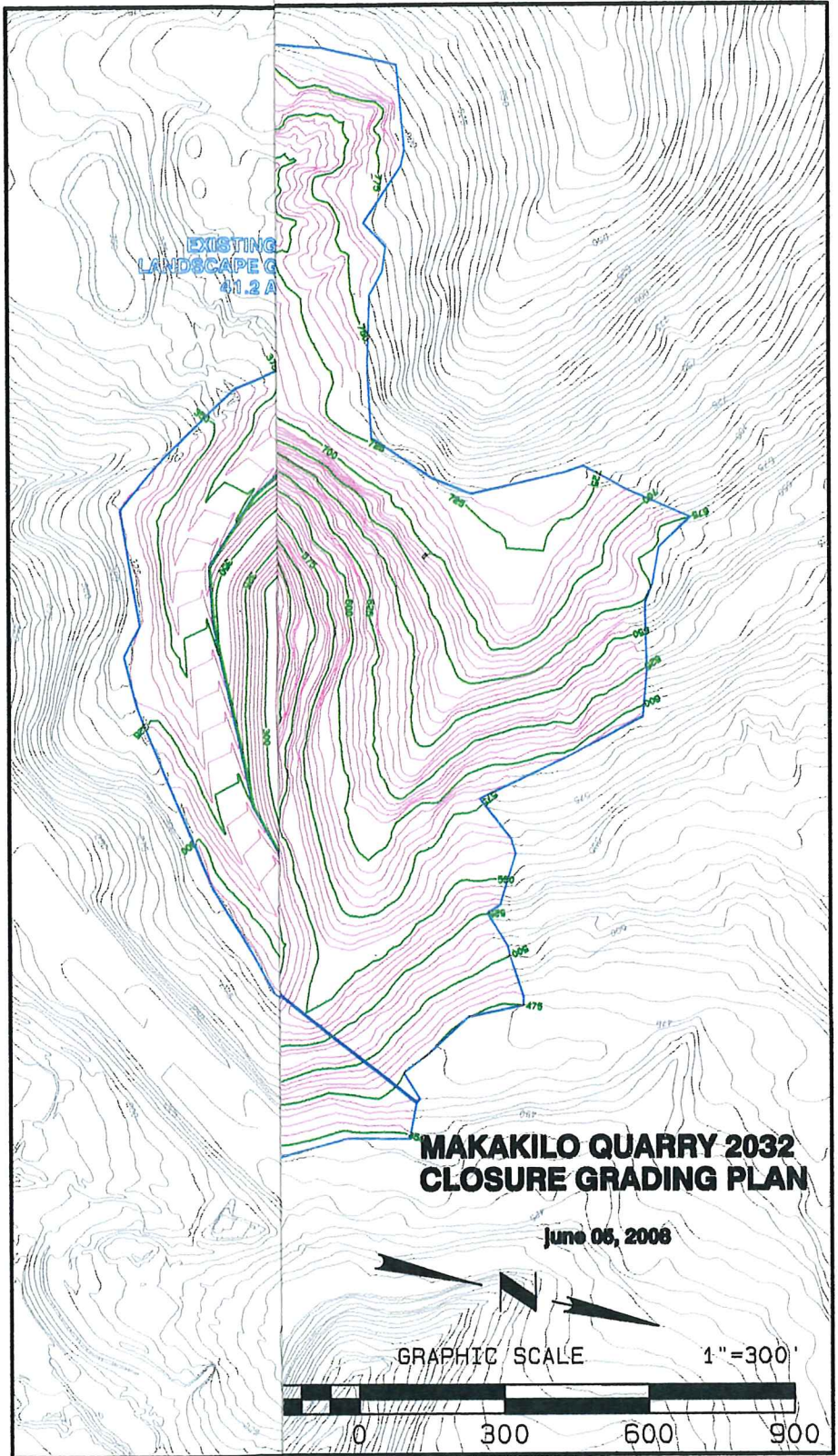


Note: Topographic lines are in 25' contours.



Figure 9
EXISTING STRUCTURES AND
PARKING IN QUARRY SITE

Ewa, Oahu, Hawaii



Revised Figure 4

EXHIBIT 1

Revised Metes and Bounds Description Parcel 82 – Quarry Area

Tapestry Partners Ltd.
Thursday, June 05, 2008 9:30:46 PM

PROJECT: E:\TAPESTRY\JOB DATA\1000 GRACE PACIFIC\1000 MAK REV 06.pro

CLOSURE REPORT

Coordinate values shown are computed based on the rounded bearing and distance, or chord bearing and chord lengths as indicated herein.

Boundary Name: EXISTING QUARRRY AREA

Point Number	Description	Sta	Northing	Easting	Elevation
Bearing	Distance				
0		1+03.65	-5565.4412	1125.4904	
0	297°17'09"	72.77 ft			
0		1+76.42	-5598.8012	1190.1633	
0	320°05'23"	85.94 ft			
0		2+62.36	-5664.7214	1245.3013	
0	295°20'57"	176.75 ft			
0		4+39.11	-5740.3940	1405.0330	
0	308°23'57"	341.59 ft			
0		7+80.70	-5952.5680	1672.7379	
0	277°53'50"	262.33 ft			
0		10+43.03	-5988.6112	1932.5800	
0	316°04'27"	61.60 ft			
0		11+04.63	-6032.9779	1975.3136	
0	12°06'16"	144.36 ft			
0		12+48.99	-6174.1284	1945.0421	
0	344°58'21"	143.57 ft			
0		13+92.56	-6312.7885	1982.2673	
0	332°34'54"	115.89 ft			
0		15+08.45	-6415.6603	2035.6328	
0	328°19'38"	211.87 ft			
0		17+20.32	-6595.9746	2146.8788	
0	342°47'16"	168.70 ft			
0		18+89.02	-6757.1194	2196.7991	
0	11°21'34"	203.16 ft			
0		20+92.18	-6956.2996	2156.7841	
0	356°02'01"	203.39 ft			
0		22+95.57	-7159.2025	2170.8528	
0	3°29'29"	381.89 ft			
0		26+77.46	-7540.3837	2147.5963	
0	18°41'14"	368.27 ft			
0		30+45.72	-7889.2391	2029.6019	
0	32°46'44"	184.77 ft			
0		32+30.50	-8044.5875	1929.5677	
0	41°14'46"	247.44 ft			
0		34+77.93	-8230.6338	1766.4318	
0	46°48'20"	187.45 ft			
0		36+65.38	-8358.9389	1629.7742	
0	65°28'52"	384.89 ft			
0		40+50.26	-8518.6657	1279.5918	
0	73°07'13"	118.56 ft			
0		41+68.83	-8553.0912	1166.1398	
0	108°01'23"	169.64 ft			
0		43+38.47	-8500.6046	1004.8237	
0	125°49'17"	347.46 ft			
0		46+85.93	-8297.2500	723.0874	
0	221°28'26"	299.26 ft			
0		49+85.19	-8073.0272	921.2809	
0	167°50'47"	630.47 ft			
0		56+15.66	-7456.6881	788.5459	
0	135°32'43"	381.15 ft			

EXISTING QUARRY AREA REPORT					
0			59+96.81	-7184.6217	521.6093
0	112°37'10"	140.66 ft	61+37.47	-7130.5226	391.7689
0	135°29'16"	4.25 ft	61+41.72	-7127.4919	388.7894
0	205°15'00"	1727.05 ft	78+68.77	-5565.4527	1125.4949

Closing latitude = -0.01147
 Closing departure = 0.00453
 Closing bearing = 158°26'34"
 Closing distance = 0.01234
 Total traverse length = 7765.13 (7765.12)
 Total error of closure = 1/629430
 Error of closure in latitude = 1/676770
 Error of closure in departure = 1/1713053

 Area = 3417257.88 Sq. Ft.
 Area = 78.4494 Acres

EXHIBIT 2

Revised Metes and Bounds Description Parcel 82 – Landscape Grading Area

Tapestry Partners Ltd.
Thursday, June 05, 2008 9:38:32 PM

PROJECT: E:\TAPESTRY\JOB DATA\1000 GRACE PACIFIC\1000 MAK REV 06.pro

CLOSURE REPORT

Coordinate values shown are computed based on the rounded bearing and distance, or chord bearing and chord lengths as indicated herein.
Boundary Name: EXISTING QUARRY LANDSCAPE GRADING AREA

Point Number	Description	Sta	Northing	Easting	Elevation
Bearing	Distance				
0		1+03.72	-7127.5768	388.7394	0.00
0	315°29'16"	4.23 ft			
0		1+07.95	-7130.5932	391.7049	0.00
0	292°37'10"	140.66 ft			
0		2+48.61	-7184.6923	521.5453	0.00
0	315°32'43"	381.10 ft			
0		6+29.72	-7456.7230	788.4469	0.00
0	347°50'47"	630.39 ft			
0		12+60.11	-8072.9839	921.1650	0.00
0	41°28'26"	299.32 ft			
0		15+59.42	-8297.2517	722.9318	0.00
0	305°49'17"	347.59 ft			
0		19+07.01	-8500.6823	1004.7735	0.00
0	288°01'23"	169.69 ft			
0		20+76.70	-8553.1844	1166.1372	0.00
0	253°07'13"	118.60 ft			
0		21+95.30	-8518.7473	1279.6275	0.00
0	245°28'52"	384.91 ft			
0		25+80.21	-8359.0122	1629.8280	0.00
0	226°48'20"	187.47 ft			
0		27+67.68	-8230.6934	1766.5002	0.00
0	221°14'46"	247.45 ft			
0		30+15.13	-8044.6396	1929.6427	0.00
0	212°46'44"	184.79 ft			
0		31+99.92	-7889.2744	2029.6878	0.00
0	198°41'14"	368.29 ft			
0		35+68.21	-7540.4000	2147.6885	0.00
0	183°29'29"	381.91 ft			
0		39+50.12	-7159.1989	2170.9463	0.00
0	176°02'01"	203.38 ft			
0		41+53.50	-6956.3060	2156.8782	0.00
0	191°21'34"	203.17 ft			
0		43+56.67	-6757.1159	2196.8953	0.00
0	162°47'16"	168.74 ft			
0		45+25.41	-6595.9329	2146.9631	0.00
0	148°19'38"	211.88 ft			
0		47+37.29	-6415.6102	2035.7118	0.00
0	152°34'54"	115.87 ft			
0		48+53.16	-6312.7561	1982.3556	0.00
0	164°58'21"	143.53 ft			
0		49+96.70	-6174.1346	1945.1407	0.00
0	192°06'16"	144.39 ft			
0		51+41.09	-6032.9548	1975.4185	0.00
0	136°04'27"	61.68 ft			
0		52+02.77	-5988.5305	1932.6295	0.00
0	97°53'50"	262.34 ft			
0		54+65.11	-5952.4859	1672.7775	0.00
0	128°23'57"	341.58 ft			
0		58+06.69	-5740.3181	1405.0804	0.00
0	115°20'57"	176.74 ft			

EXISTING QUARRY LANDSCAPE GRADING AREA					
0		59+83.43	-5664.6498	1245.3577	0.00
0	140°05'23"	85.94 ft			
0		60+69.37	-5598.7295	1190.2197	0.00
0	117°17'09"	72.79 ft			
0		61+42.16	-5565.3604	1125.5290	0.00
0	205°15'00"	765.32 ft			
0		69+07.48	-4873.1628	1451.9906	0.00
0	267°53'06"	77.22 ft			
0		69+84.70	-4870.3130	1529.1580	0.00
0	347°37'46"	126.23 ft			
0		71+10.93	-4993.6122	1556.2006	0.00
0	331°50'44"	382.53 ft			
0		74+93.46	-5330.8809	1736.6974	0.00
0	313°50'15"	231.23 ft			
0		77+24.69	-5491.0343	1903.4852	0.00
0	343°14'39"	92.04 ft			
0		78+16.73	-5579.1665	1930.0198	0.00
0	347°40'58"	143.34 ft			
0		79+60.07	-5719.2070	1960.5976	0.00
0	289°23'37"	65.88 ft			
0		80+25.95	-5741.0829	2022.7396	0.00
0	233°18'21"	218.46 ft			
0		82+44.42	-5610.5435	2197.9088	0.00
0	359°51'26"	254.93 ft			
0		84+99.35	-5865.4727	2198.5441	0.00
0	23°08'34"	212.32 ft			
0		87+11.67	-6060.7070	2115.0973	0.00
0	40°43'16"	108.99 ft			
0		88+20.65	-6143.3098	2043.9946	0.00
0	352°08'41"	103.17 ft			
0		89+23.82	-6245.5117	2058.0950	0.00
0	334°57'45"	219.75 ft			
0		91+43.57	-6444.6120	2151.0957	0.00
0	317°47'53"	128.92 ft			
0		92+72.49	-6540.1136	2237.6971	0.00
0	343°29'41"	198.17 ft			
0		94+70.65	-6730.1178	2293.9980	0.00
0	359°01'44"	206.53 ft			
0		96+77.18	-6936.6181	2297.4983	0.00
0	295°35'31"	176.41 ft			
0		98+53.59	-7012.8200	2456.6013	0.00
0	1°21'03"	220.56 ft			
0		100+74.15	-7233.3187	2451.4017	0.00
0	21°00'35"	359.62 ft			
0		104+33.77	-7569.0310	2322.4685	0.00
0	83°07'11"	89.73 ft			
0		105+23.50	-7579.7802	2233.3847	0.00
0	19°53'54"	688.65 ft			
0		112+12.15	-8227.3164	1999.0011	0.00
0	47°06'15"	259.25 ft			
0		114+71.41	-8403.7795	1809.0765	0.00
0	54°34'08"	396.94 ft			
0		118+68.34	-8633.8950	1485.6446	0.00
0	62°24'40"	112.00 ft			
0		119+80.35	-8685.7650	1386.3798	0.00
0	104°37'16"	71.90 ft			
0		120+52.25	-8667.6155	1316.8082	0.00
0	67°12'51"	242.90 ft			
0		122+95.15	-8761.6877	1092.8643	0.00
0	116°49'06"	120.52 ft			
0		124+15.67	-8707.3135	985.3073	0.00
0	122°09'30"	226.51 ft			
0		126+42.18	-8586.7511	793.5483	0.00

EXISTING QUARRY LANDSCAPE GRADING AREA						
0	143°38'40"	275.20 ft	129+17.39	-8365.1177	630.4113	0.00
0	162°08'30"	351.85 ft	132+69.24	-8030.2207	522.5114	0.00
0	55°56'09"	288.87 ft	135+58.10	-8192.0229	283.2084	0.00
0	131°17'38"	334.74 ft	138+92.84	-7971.1207	31.7067	0.00
0	199°16'53"	58.95 ft	139+51.79	-7915.4773	51.1724	0.00
0	194°50'28"	170.28 ft	141+22.07	-7750.8779	94.7878	0.00
0	205°15'00"	689.12 ft	148+11.19	-7127.5998	388.7449	0.00

Closing latitude = -0.02295
 Closing departure = 0.00551
 Closing bearing = 166°30'01"
 Closing distance = 0.02360
 Total traverse length = 14707.46 (14707.47)
 Total error of closure = 1/623104
 Error of closure in latitude = 1/640809
 Error of closure in departure = 1/2669216

 Area = 1793035.25 Sq. Ft.
 Area = 41.1624 Acres

EXHIBIT 3

Revised Metes and Bounds Description Parcel 74 – Quarry Area

Tapestry Partners Ltd.
Thursday, June 05, 2008 9:35:22 PM

PROJECT: E:\TAPESTRY\JOB DATA\1000 GRACE PACIFIC\1000 MAK REV 06.pro

CLOSURE REPORT

Coordinate values shown are computed based on the rounded bearing and distance, or chord bearing and chord lengths as indicated herein.
Boundary Name: QUARRY AREA

Point Number	Description	Sta	Northing	Easting	Elevation
Bearing	Distance				
0		0+72.77	-7127.4804	388.7848	
0	135°29'16"	103.65 ft			
0	174°54'36"	8.68 ft	1+76.42	-7053.5675	316.1198
0	162°21'20"	11.97 ft	1+85.09	-7044.9217	315.3497
0	162°19'30"	16.49 ft	1+97.06	-7033.5149	311.7215
0	149°28'05"	9.87 ft	2+13.56	-7017.8033	306.7149
0	133°29'27"	11.05 ft	2+23.42	-7009.3018	301.7007
0	126°37'04"	33.55 ft	2+34.47	-7001.6968	293.6841
0	115°50'03"	60.13 ft	2+68.03	-6981.6851	266.7558
0	142°57'08"	5.48 ft	3+28.16	-6955.4823	212.6353
0	157°24'41"	129.42 ft	3+33.63	-6951.1086	209.3337
0	142°30'06"	75.06 ft	4+63.05	-6831.6168	159.6219
0	163°33'13"	43.02 ft	5+38.11	-6772.0664	113.9300
0	195°18'03"	103.15 ft	5+81.13	-6730.8065	101.7503
0	164°24'33"	110.54 ft	6+84.29	-6631.3128	128.9702
0	214°37'26"	140.21 ft	7+94.83	-6524.8401	99.2609
0	195°02'03"	52.17 ft	9+35.04	-6409.4614	178.9263
0	207°30'16"	115.51 ft	9+87.21	-6359.0771	192.4590
0	234°31'56"	51.21 ft	11+02.72	-6256.6226	245.8035
0	203°01'06"	76.27 ft	11+53.92	-6226.9082	287.5111
0	175°28'44"	25.53 ft	12+30.20	-6156.7109	317.3346
0	158°32'39"	124.93 ft	12+55.72	-6131.2603	315.3222
0	152°22'57"	120.46 ft	13+80.65	-6014.9880	269.6248
0	119°29'16"	153.17 ft	15+01.12	-5908.2529	213.7835
0	198°12'51"	51.27 ft	16+54.28	-5832.8569	80.4551
0	271°30'09"	46.97 ft	17+05.55	-5784.1558	96.4805

QUARRY AREA					
0			17+52.52	-5785.3873	143.4344
0	251°26'11"	60.82 ft			
0			18+13.34	-5766.0249	201.0900
0	259°37'57"	98.95 ft			
0			19+12.29	-5748.2177	298.4245
0	239°07'30"	83.92 ft			
0			19+96.21	-5705.1527	370.4521
0	175°24'16"	53.65 ft			
0			20+49.86	-5651.6752	366.1536
0	241°34'26"	34.87 ft			
0			20+84.73	-5635.0762	396.8193
0	181°15'54"	89.21 ft			
0			21+73.94	-5545.8880	398.7888
0	190°08'16"	94.97 ft			
0			22+68.92	-5452.4007	415.5050
0	237°03'49"	42.63 ft			
0			23+11.54	-5429.2224	451.2833
0	261°06'24"	64.99 ft			
0			23+76.53	-5419.1753	515.4920
0	289°42'21"	49.09 ft			
0			24+25.62	-5435.7280	561.7071
0	269°50'53"	100.20 ft			
0			25+25.82	-5435.4623	661.9067
0	296°31'11"	69.75 ft			
0			25+95.57	-5466.6061	724.3177
0	287°44'19"	58.40 ft			
0			26+53.97	-5484.3991	779.9411
0	277°27'11"	37.72 ft			
0			26+91.68	-5489.2919	817.3425
0	280°31'50"	255.27 ft			
0			29+46.95	-5535.9450	1068.3131
0	297°17'09"	64.34 ft			
0			30+11.30	-5565.4404	1125.4940
0	25°15'00"	1727.05 ft			
0			47+38.35	-7127.4796	388.7885

Closing latitude = 0.00079
 Closing departure = 0.00364
 Closing bearing = 77°41'53"
 Closing distance = 0.00372
 Total traverse length = 4665.59 (4665.58)
 Total error of closure = 1/1252900
 Error of closure in latitude = 1/5880376
 Error of closure in departure = 1/1282345

 Area = 896723.22 Sq. Ft.
 Area = 20.5859 Acres

EXHIBIT 4

Revised Metes and Bounds Description Parcel 74 – Landscape Grading Area

Tapestry Partners Ltd.
Thursday, June 05, 2008 9:40:11 PM

PROJECT: E:\TAPESTRY\JOB DATA\1000 GRACE PACIFIC\1000 MAK REV 06.pro

CLOSURE REPORT

Coordinate values shown are computed based on the rounded bearing and distance, or chord bearing and chord lengths as indicated herein.

Boundary Name: QUARRY LANDSCAPE GRADING AREA

Point Number	Description	Sta	Northing	Easting	Elevation
Bearing	Distance				
0		0+72.79	-7750.8577	94.7810	0.00
0	193°58'58"	294.54 ft			
0		3+67.33	-7465.0454	165.9508	0.00
0	149°36'12"	260.52 ft			
0		6+27.86	-7240.3357	34.1319	0.00
0	166°53'01"	78.74 ft			
0		7+06.59	-7163.6499	16.2635	0.00
0	157°39'31"	70.91 ft			
0		7+77.50	-7098.0628	-10.6911	0.00
0	155°11'14"	55.68 ft			
0		8+33.18	-7047.5229	-34.0575	0.00
0	140°22'45"	98.71 ft			
0		9+31.89	-6971.4885	-97.0053	0.00
0	163°12'44"	164.52 ft			
0		10+96.41	-6813.9801	-144.5232	0.00
0	144°27'30"	172.08 ft			
0		12+68.48	-6673.9598	-244.5524	0.00
0	162°31'23"	76.19 ft			
0		13+44.67	-6601.2869	-267.4339	0.00
0	178°31'10"	167.48 ft			
0		15+12.16	-6433.8628	-271.7612	0.00
0	217°11'45"	268.72 ft			
0		17+80.87	-6219.8075	-109.3089	0.00
0	176°18'55"	228.26 ft			
0		20+09.14	-5992.0194	-123.9783	0.00
0	136°20'45"	168.28 ft			
0		21+77.42	-5870.2655	-240.1427	0.00
0	88°13'54"	265.60 ft			
0		24+43.01	-5878.4615	-505.6162	0.00
0	129°55'40"	114.57 ft			
0		25+57.58	-5804.9280	-593.4747	0.00
0	171°29'56"	257.61 ft			
0		28+15.19	-5550.1483	-631.5568	0.00
0	179°55'35"	156.37 ft			
0		29+71.56	-5393.7785	-631.7577	0.00
0	251°39'39"	176.99 ft			
0		31+48.55	-5338.0901	-463.7569	0.00
0	270°00'00"	34.05 ft			
0		31+82.60	-5338.0901	-429.7069	0.00
0	290°08'02"	140.92 ft			
0		33+23.52	-5386.5969	-297.3984	0.00
0	214°15'35"	66.60 ft			
0		33+90.11	-5331.5523	-259.9062	0.00
0	265°20'00"	52.06 ft			
0		34+42.18	-5327.3168	-208.0188	0.00
0	284°51'48"	55.34 ft			
0		34+97.52	-5341.5123	-154.5305	0.00
0	258°41'49"	150.25 ft			
0		36+47.77	-5312.0635	-7.1947	0.00
0	253°47'33"	143.91 ft			

QUARRY LANDSCAPE						
0			37+91.68	-5271.8958	130.9959	0.00
0	200°39'16"	151.11 ft				
0			39+42.79	-5130.4985	184.2971	0.00
0	188°47'46"	86.32 ft				
0			40+29.11	-5045.1937	197.4970	0.00
0	154°14'09"	197.46 ft				
0			42+26.57	-4867.3630	111.6675	0.00
0	148°10'35"	42.80 ft				
0			42+69.37	-4830.9969	89.0988	0.00
0	195°35'28"	103.63 ft				
0			43+73.01	-4731.1801	116.9515	0.00
0	190°25'38"	144.47 ft				
0			45+17.47	-4589.0959	143.0986	0.00
0	303°08'12"	91.11 ft				
0			46+08.58	-4638.9001	219.3913	0.00
0	267°14'41"	77.09 ft				
0			46+85.68	-4635.1944	296.3922	0.00
0	278°37'56"	43.12 ft				
0			47+28.80	-4641.6663	339.0237	0.00
0	255°18'16"	140.54 ft				
0			48+69.34	-4606.0137	474.9663	0.00
0	262°14'38"	94.52 ft				
0			49+63.86	-4593.2576	568.6216	0.00
0	319°09'37"	183.30 ft				
0			51+47.16	-4731.9317	688.4897	0.00
0	321°51'50"	123.59 ft				
0			52+70.75	-4829.1410	764.8105	0.00
0	321°55'34"	72.38 ft				
0			53+43.13	-4886.1197	809.4456	0.00
0	219°00'40"	104.92 ft				
0			54+48.05	-4804.5943	875.4897	0.00
0	240°11'00"	32.60 ft				
0			54+80.65	-4788.3847	903.7741	0.00
0	274°16'05"	111.05 ft				
0			55+91.70	-4796.6494	1014.5162	0.00
0	312°24'59"	31.08 ft				
0			56+22.78	-4817.6133	1037.4614	0.00
0	225°00'16"	79.09 ft				
0			57+01.87	-4761.6925	1093.3908	0.00
0	244°05'34"	21.20 ft				
0			57+23.07	-4752.4299	1112.4602	0.00
0	238°42'43"	87.20 ft				
0			58+10.27	-4707.1434	1186.9785	0.00
0	256°43'07"	19.89 ft				
0			58+30.16	-4702.5740	1206.3365	0.00
0	334°45'29"	117.23 ft				
0			59+47.39	-4808.6103	1256.3282	0.00
0	304°36'11"	108.84 ft				
0			60+56.23	-4870.4192	1345.9151	0.00
0	309°14'11"	66.17 ft				
0			61+22.41	-4912.2731	1397.1666	0.00
0	225°50'58"	63.58 ft				
0			61+85.99	-4867.9867	1442.7860	0.00
0	299°15'58"	10.54 ft				
0			61+96.53	-4873.1394	1451.9807	0.00
0	25°15'00"	765.32 ft				
0			69+61.85	-5565.3370	1125.5191	0.00
0	117°17'09"	64.35 ft				
0			70+26.20	-5535.8370	1068.3293	0.00
0	100°31'50"	255.29 ft				
0			72+81.49	-5489.1803	817.3390	0.00
0	97°27'11"	37.71 ft				
0			73+19.20	-5484.2888	779.9476	0.00

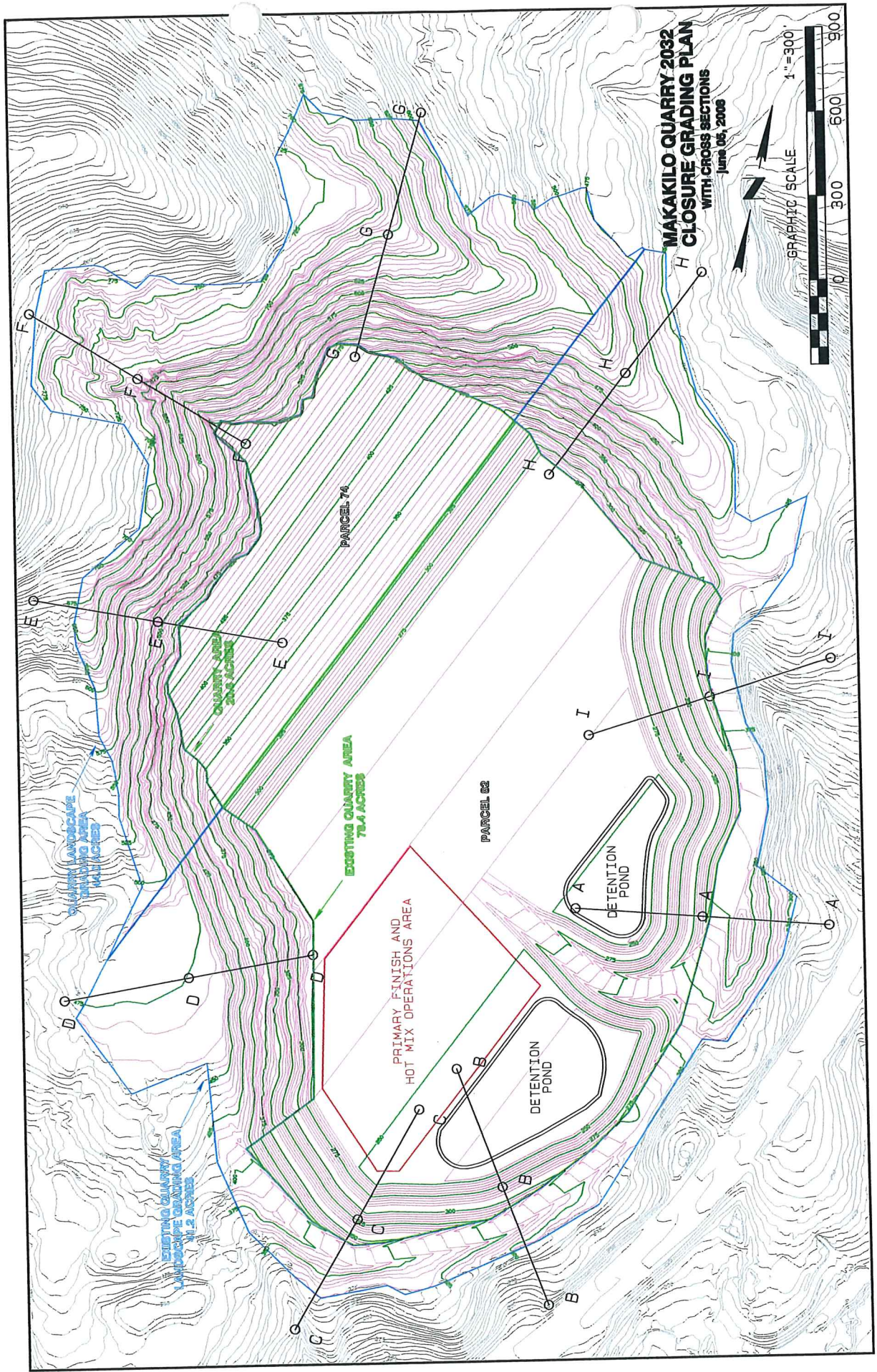
QUARRY LANDSCAPE

0	107°44'19"	58.38 ft	73+77.58	-5466.5018	724.3432	0.00
0	116°31'11"	69.77 ft	74+47.35	-5435.3491	661.9143	0.00
0	89°50'53"	100.20 ft	75+47.55	-5435.6148	561.7147	0.00
0	109°42'21"	49.10 ft	75+96.65	-5419.0588	515.4901	0.00
0	81°06'24"	65.04 ft	76+61.68	-5429.1136	451.2321	0.00
0	57°03'49"	42.69 ft	77+04.37	-5452.3245	415.4034	0.00
0	10°08'16"	95.02 ft	77+99.40	-5545.8610	398.6784	0.00
0	1°15'54"	89.16 ft	78+88.56	-5634.9993	396.7101	0.00
0	61°34'26"	34.88 ft	79+23.44	-5651.6030	366.0355	0.00
0	355°24'16"	53.65 ft	79+77.09	-5705.0805	370.3340	0.00
0	59°07'30"	83.84 ft	80+60.93	-5748.1045	298.3751	0.00
0	79°37'57"	98.94 ft	81+59.87	-5765.9098	201.0504	0.00
0	71°26'11"	60.81 ft	82+20.68	-5785.2691	143.4043	0.00
0	91°30'09"	47.02 ft	82+67.70	-5784.0362	96.4004	0.00
0	18°12'51"	51.43 ft	83+19.13	-5832.8893	80.3250	0.00
0	299°29'16"	153.22 ft	84+72.35	-5908.3100	213.6970	0.00
0	332°22'57"	120.43 ft	85+92.78	-6015.0185	269.5243	0.00
0	338°32'39"	124.91 ft	87+17.68	-6131.2722	315.2144	0.00
0	355°28'44"	25.49 ft	87+43.17	-6156.6829	317.2237	0.00
0	23°01'06"	76.22 ft	88+19.39	-6226.8342	287.4197	0.00
0	54°31'56"	51.20 ft	88+70.60	-6256.5427	245.7203	0.00
0	27°30'16"	115.54 ft	89+86.14	-6359.0238	192.3619	0.00
0	15°02'03"	52.16 ft	90+38.30	-6409.3985	178.8318	0.00
0	34°37'26"	140.24 ft	91+78.55	-6524.8019	99.1493	0.00
0	344°24'33"	110.56 ft	92+89.10	-6631.2939	128.8640	0.00
0	15°18'03"	103.15 ft	93+92.26	-6730.7876	101.6441	0.00
0	343°33'13"	43.07 ft	94+35.33	-6772.0954	113.8380	0.00
0	322°30'06"	75.06 ft	95+10.39	-6831.6458	159.5299	0.00
0	337°24'41"	129.42 ft	96+39.81	-6951.1376	209.2416	0.00
0	322°57'08"	5.51 ft	96+45.32	-6955.5353	212.5613	0.00
0	295°50'03"	60.14 ft	97+05.47	-6981.7424	266.6909	0.00
0	306°37'04"	33.54 ft				

QUARRY LANDSCAPE						
0			97+39.01	-7001.7481	293.6111	0.00
	313°29'27"	11.03 ft				
0			97+50.03	-7009.3394	301.6132	0.00
	329°28'05"	9.84 ft				
0			97+59.88	-7017.8150	306.6121	0.00
	342°19'30"	16.48 ft				
0			97+76.36	-7033.5171	311.6158	0.00
	342°21'20"	11.96 ft				
0			97+88.32	-7044.9144	315.2409	0.00
	354°54'36"	8.70 ft				
0			97+97.02	-7053.5801	316.0128	0.00
	315°29'16"	103.72 ft				
0			99+00.74	-7127.5430	388.7269	0.00
	25°15'00"	689.12 ft				
0			105+89.86	-7750.8211	94.7699	0.00

Closing latitude = 0.03665
 Closing departure = -0.01117
 Closing bearing = 343°03'20"
 Closing distance = 0.03832
 Total traverse length = 10517.04 (10517.07)
 Total error of closure = 1/274484
 Error of closure in latitude = 1/286941
 Error of closure in departure = 1/941802

Area = 1916156.98 Sq. Ft.
 Area = 43.9889 Acres



Revised Figure 5a

**MAKAKILO QUARRY 2032
CLOSURE GRADING PLAN
CROSS SECTION "D"**

JUNE 05, 2008

540
480
420
360
300
240



Horizontal scale is 1" = 60ft
Vertical scale is 1" = 60ft

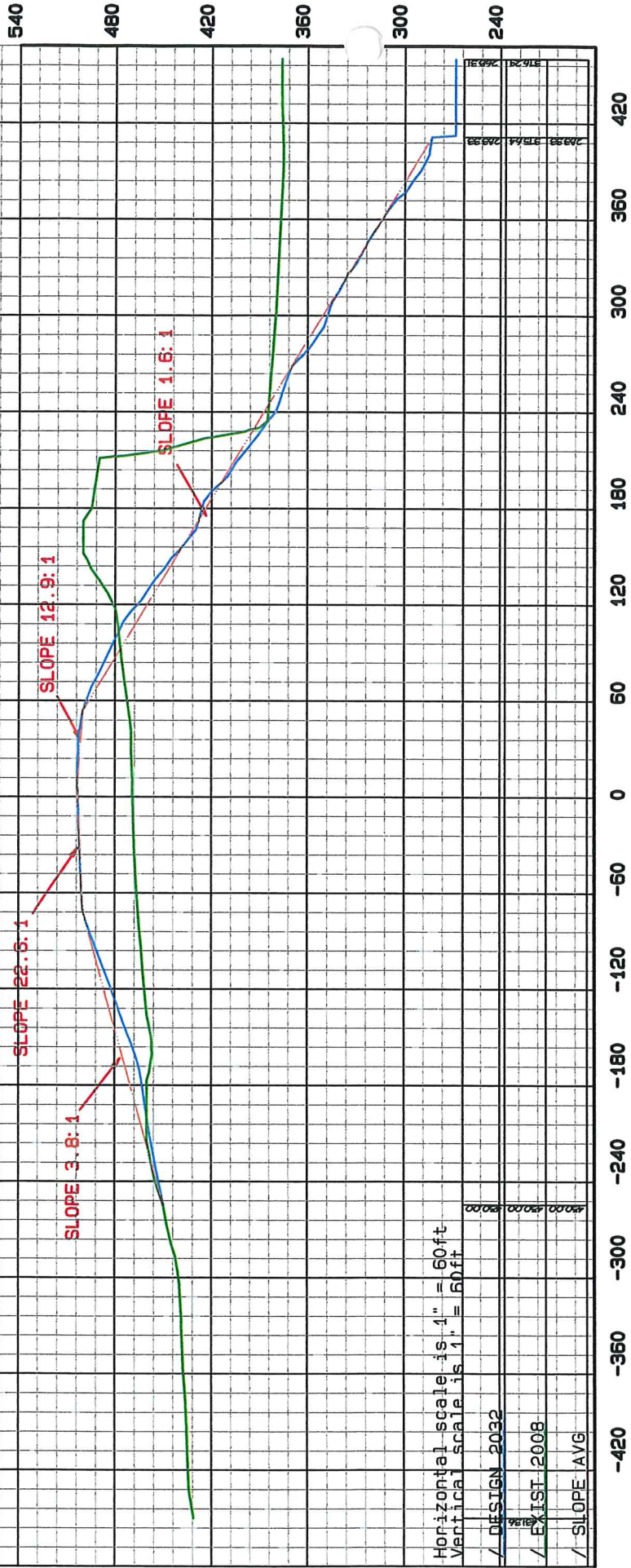
DESIGN 2032
EXIST 2008
SLOPE AVG

-420 -360 -300 -240 -180 -120 -60 0 60 120 180 240 300 360 420

Revised Figure 5b (part 4 of 9)

MAKAKILO QUARRY 2032
 CLOSURE GRADING PLAN
 CROSS SECTION "H"

JUNE 05, 2008



Revised Figure 5b (part 8 of 9)