



RECEIVED  
SEP 12 2008

ORIGINAL

RECEIVED  
TRANSMITTAL

STATE OF HAWAII  
LAND USE COMMISSION

'07 DEC -4 A11 :06

TO:  
Mr. Raymond Young  
Department of Planning and Permitting  
City and County of Honolulu  
650 South King Street, 7th Floor  
Honolulu, Hawaii 96813

FROM:  
Glen Koyama  
Belt Collins Hawaii Ltd.  
DEPT. OF PLANNING  
AND PERMITTING  
CITY & COUNTY OF HONOLULU

SUBJECT: Makakilo Quarry  
DATE: December 3, 2007

JOB NUMBER/REFERENCE NUMBER: 2004-33-8000  
VIA:  Mail  Courier  Messenger  Will Call

WE ARE SENDING YOU:  
 Reports  Prints  Tracings  Shop Drawings  Samples  
 Specifications  Electronic Files  Change Order  Other CD

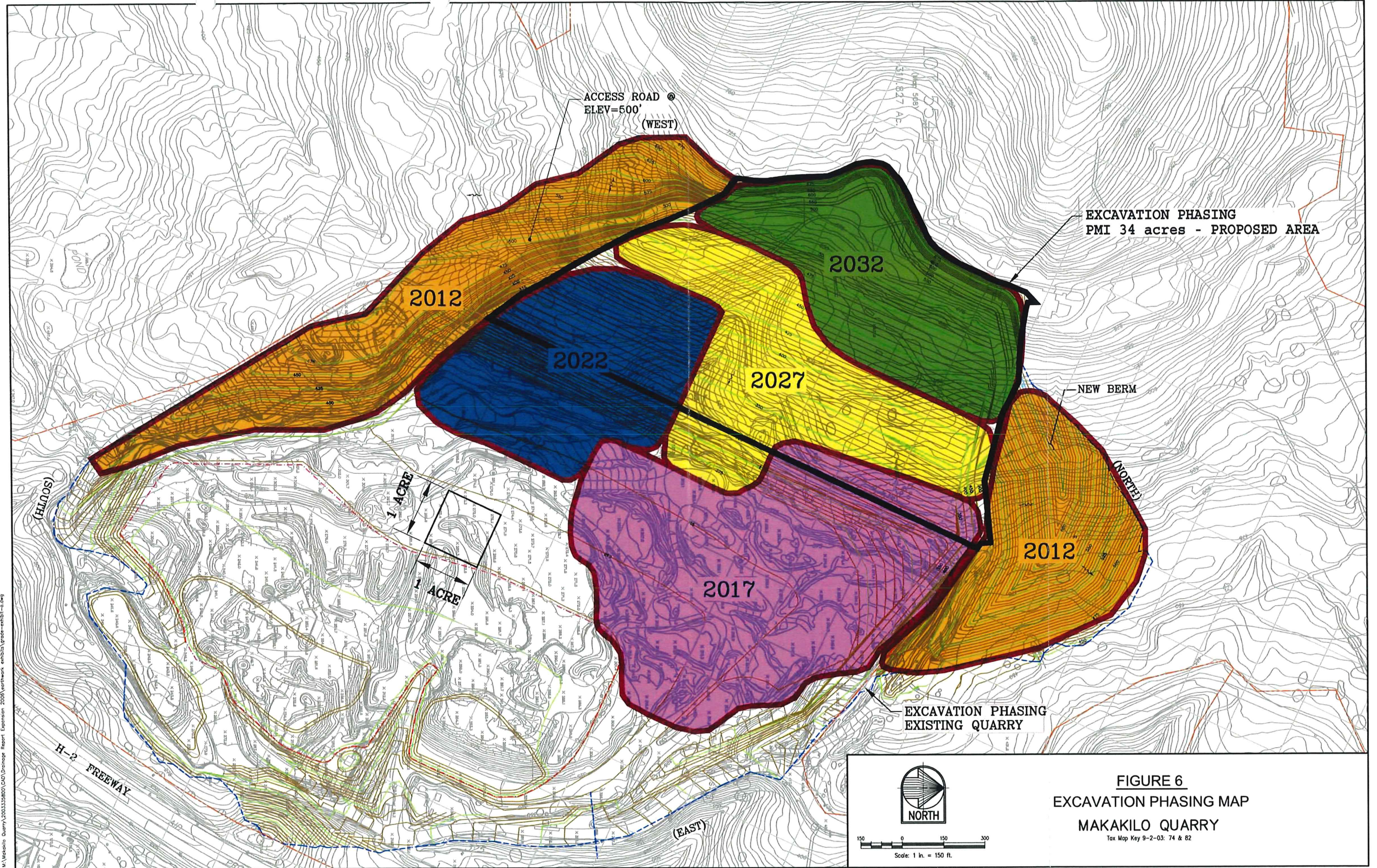
COPIES:	DATE:	DESCRIPTION:
4	Updated November 2007 (Original dated July 31, 2007)	PDF file on CD for Application to Modify Conditional Use Permit (Major) 72/CUP-15 and Application to Modify Special Use Permit No. SP73-147 (version of PDF file without blank pages)
5	Updated November 2007 (Original dated July 31, 2007)	Figure 6 of Exhibit K, Appendix B

Honolulu  
Guam  
Hong Kong  
Philippines  
Seattle  
Singapore  
Thailand

THESE ARE TRANSMITTED AS CHECKED BELOW:  
 For approval  No exceptions taken  Resubmit \_\_\_ copies for approval  
 For your use  Make corrections noted  Submit \_\_\_ copies for distribution  
 As requested  Revise and resubmit  Return \_\_\_ corrected prints  
 For review and comment  Rejected  Other: \_\_\_\_\_

REMARKS:  
Please find enclosed four (4) CD copies of the above application in PDF without blank pages and 5 copies of Figure 6 as requested.

COPY TO: Robert Creps, Grace Pacific Corporation  
Belt Collins Hawaii Ltd.:   
Glen Koyama



**FIGURE 6**  
**EXCAVATION PHASING MAP**  
**MAKAKILO QUARRY**  
 Tax Map Key 9-2-03: 74 & 82