

January 26, 1973

Mr. W. B. Case, Vice President
Sugar Operations
C. Brewer & Co., Ltd.
P. O. Box 1801
Hilo, Hawaii 96720

Dear Mr. Case:

The petitions by Mauna Kea Sugar Co., Inc. and Pepeekeo Sugar Company to amend the land use district boundaries on the island of Hawaii were approved by the Land Use Commission at its meeting on January 19, 1973, as follows:

From URBAN to AGRICULTURAL totaling approximately 108.5 acres

<u>Petitioner</u>	<u>Acres</u>	<u>Tax Map Key</u>
A72-338 - Mauna Kea Sugar Co., Inc.	53.7	2-7-02: por. 3 2-7-04: 51 & por. 23 (Papaikou)
A72-339 - Mauna Kea Sugar Co., Inc.	9.0	2-6-13: por. 7 2-6-17: por. 2 (Wainaku)
A72-340 - Pepeekeo Sugar Co.	45.8	2-8-13: por. 3 por. 4 por. 53 (Honomu)
Total	108.5	

From AGRICULTURAL to URBAN totaling approximately 224.6 acres

<u>Petitioner</u>	<u>Acres</u>	<u>Tax Map Key</u>
A72-341 - Pepeekeo Sugar Co.	224.6	2-8-07: por. 3 por. 6 (Pepeekeo)

Mr. W. B. Case, Vice President

-2-

January 26, 1973

It was further moved that unless there is satisfactory compliance with the development time schedule by July 31, 1974, the Land Use Commission will consider initiating a petition to restore the undeveloped property from an Urban to an Agricultural designation. For your information, we are enclosing herewith a copy of Section 2.33, Performance Time, of the Rules and Regulations of the Commission.

Prior to taking action on this petition, the enclosed memorandum was presented to the Commission.

Very truly yours,

TATSUO FUJIMOTO
Executive Officer

Encls.

cc: Mauna Kea Sugar Co., Inc.
Pepeekeo Sugar Co.
Hawaii Planning Commission
Dept. of Water Supply, Hawaii
Hawaii District Office, Dept. of Tax.
Property Technical Services, Dept. of Tax.
Tax Maps Branch, Dept. of Tax.
Planning Branch, DAGS
Planning Office, DLNR
Facilities & Aux. Svcs.
Director, Dept. of Transportation
Planning Division, DPED
Land Use Commission

L.C. AW 4775

H

100

Gr. 955

Gr. 953

Gr

132

Gr. 620

Gr. 619

THOMAS K. LALAKEA
13.910 ACS

Gr. PLAT 621

Gr 1034

Gr. 806

PLAT 154

Gr. 804

Gr. 903

Gr. 954

MAUNAKEA SUGAR CO., INC.
(HILO COAST PROCESSING CO.) 1B
5.60 ACS.

Flume

2-6-13
por 1

4

2-6-17
por 2

AIWIKI

1937

ROAD

Gr. L

19

HIGHWAY

Gr. 950
Waikua Lane

Gr. 955.2

3386

Hau

L.C. AW 16

Mauna Kea Sugar Co., Inc.
(HILO COAST PROCESSING CO.) 1B.
151.988 Ac.

Gr. 1348 (151.955 ac)

Gr. 1036

L.C. AW 4738-3

Gr. 3233

L.C. AW 4738-2

TRUE NORTH
1" = 500'

Flume

Gr. 591

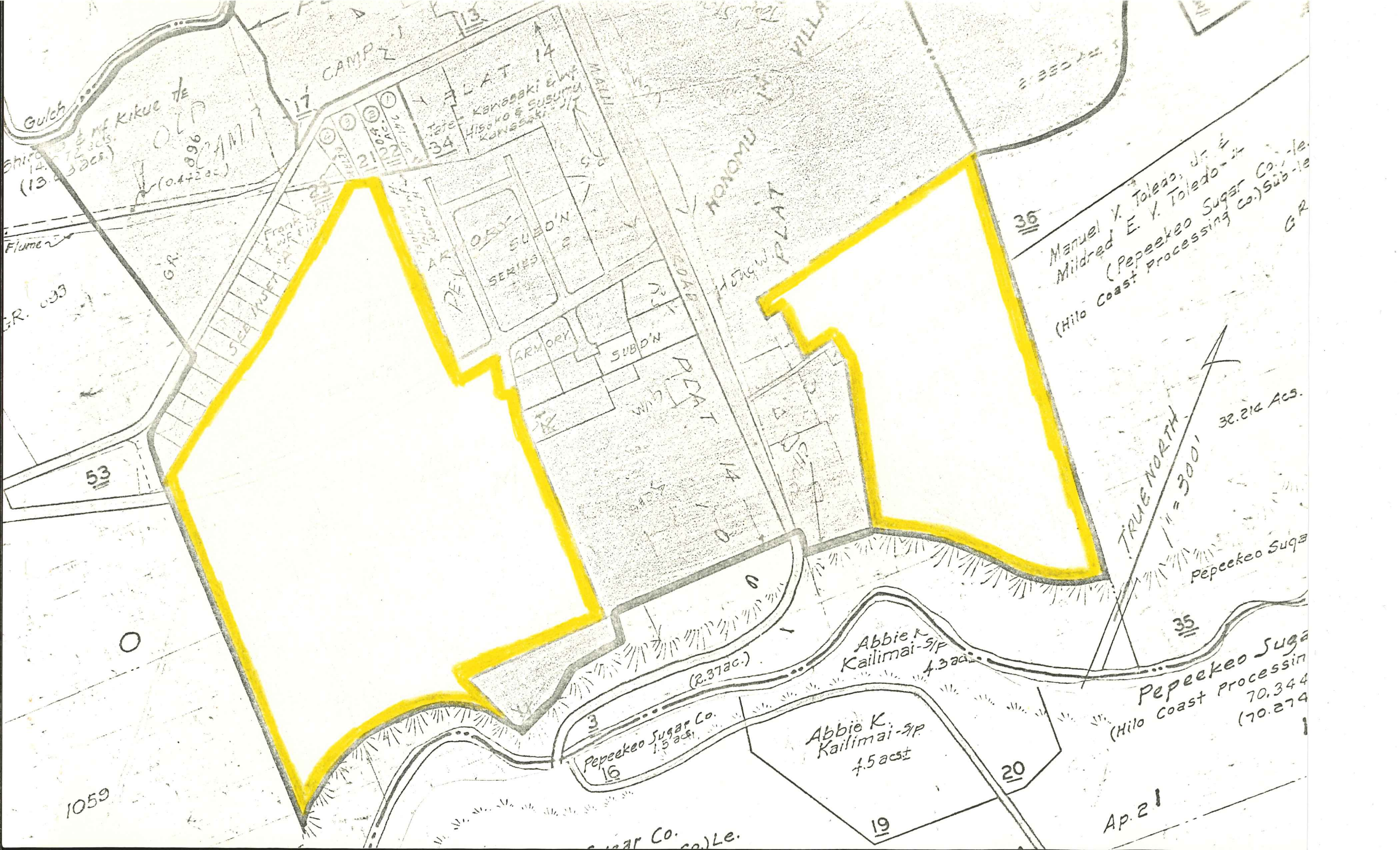
PLAT 17

L.C. AW 4738-1

L.C. AW 5703 & 11145

10

Blakunanake



Gulch
Shiro (14.72 acs.)
(13.03 acs.)
Kikue de
0.96
CAMP 1
(0.4+2 ac.)

CAMP 2

FLAT 14
KAWASAKI & WIFE
Tateo
HISAKO & SUSUMU
KAWASAKI

ARMORY
SUBD'N
SERIES

ARMORY
SUBD'N

Pepeekeo Sugar Co.
1.5 acs.
16

Abbie K.
Kailimai - 9P
4.5 acs.
19

Abbie K.
Kailimai - 9P
4.3 acs.
20

36
Manuel V. Toledo, Jr. &
Mildred E. V. Toledo - Jr.
(Pepeekeo Sugar Co. - Le.
(Hilo Coast Processing Co.) Sub - Le.
GR

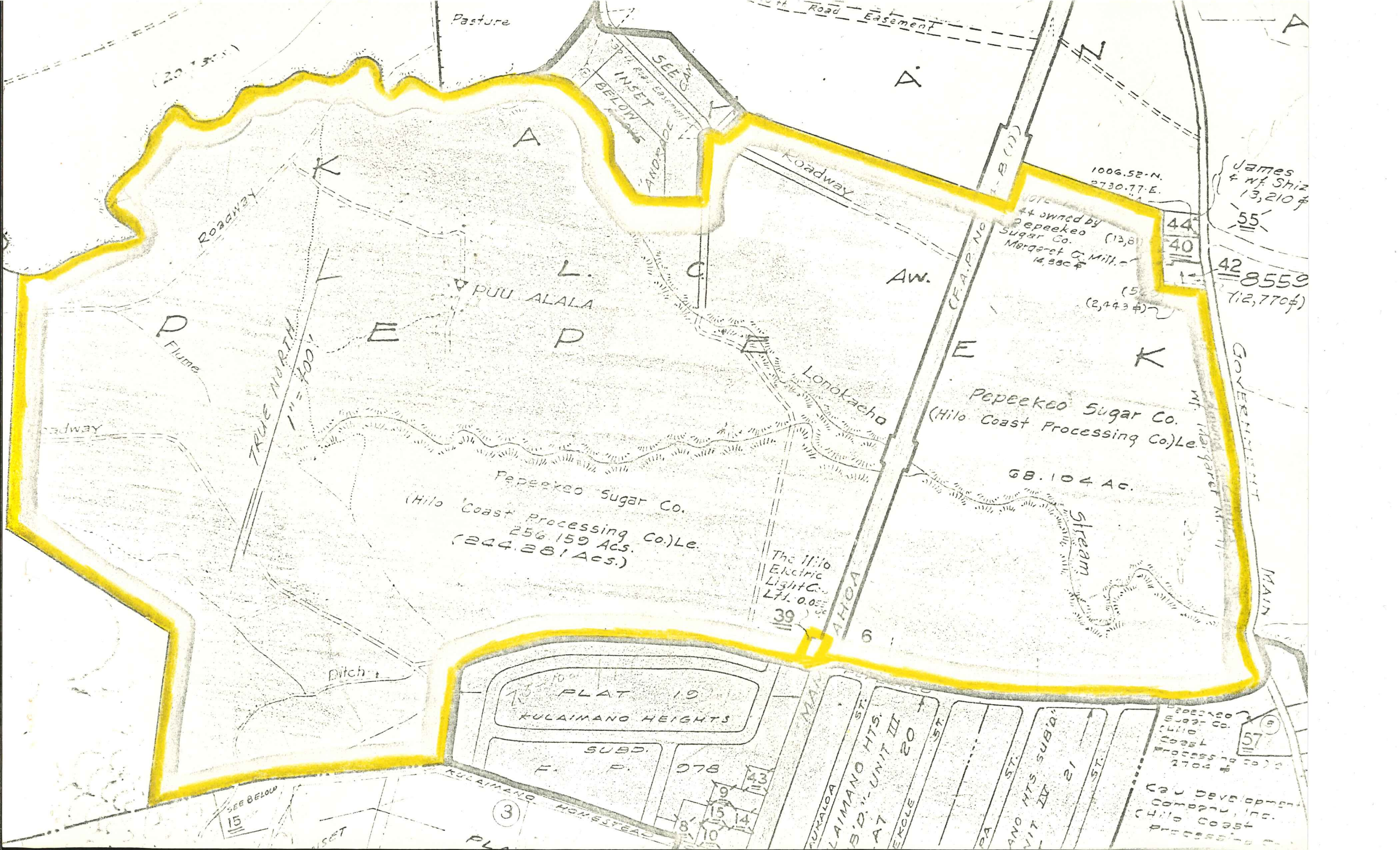
TRUE NORTH
1" = 300'
38.214 Ac.
Pepeekeo Sugar

Pepeekeo Sugar
(Hilo Coast Processing
70,344
(70,274
1

Ap. 21

1059

Co. Le.



(20.7300)

Pasture

Road Easement

Roadway

Flume

TRUE NORTH
1" = 400'

PUU ALALA

Roadway

Lonokacho

AW.

E

Pepeekeo Sugar Co.
(Hilo Coast Processing Co.) Le.

68.104 Ac.

Pepeekeo Sugar Co.
(Hilo Coast Processing Co.) Le.
256.159 Acs.
(244.281 Acs.)

The Hilo
Electric
Light Co.
771.005⁰⁰

Ditch

PLAT 19
KULAIMANO HEIGHTS

SUBD.
F. P.

078

43

9

15

14

10

KULAIMANO HOMESTEAD

3

MAKAI
TUKALO
LAIMANO HTS.
S.D. UNIT III
PLAT
EKOLE 20

PA ST.

ANO HTS. SUBD.
UNIT III

21 ST.

22 ST.

CO. DEVELOPMENT
CORPORATION, INC.
Hilo Coast
Processing

SEE 23
INSET
BELOW
AND 22

1006.52-N.
2730.77-E.

44 owned by
Pepeekeo
Sugar Co. (13,811)
Margaret C. Mill. Co.
14,390⁰⁰

44

40

42
8559
(12,770⁰⁰)

James
& Wf. Shiz
13,210⁰⁰

55

GOVERNMENT
M. Margaret Mill. Co.

MAIN

SEE BELOW
15

57