



STATE OF HAWAII
DEPARTMENT OF BUSINESS, ECONOMIC DEVELOPMENT & TOURISM
LAND USE COMMISSION
P.O. Box 2359
Honolulu, Hawaii 96804-2359
Telephone: 808-587-3822
Fax: 808-587-3827

July 28, 2006

NOTIFICATION OF SPECIAL PERMIT DECISION FILED BY THE
STATE LAND USE COMMISSION

To All Concerned Agencies:

The Decision and Order for the following special use permit petition have been filed by the Land Use Commission:

<u>Petition</u> <u>Docket No.</u>	<u>Boundary Amendment</u> <u>Requested</u>	<u>LUC Action of November 4, 2005</u>	<u>Date of Decision</u> <u>and Order</u>
SP05-399 KAUAI ATV, LLC	To Permit the Expansion of Use and Placement of Additional Structures within a Previously County-Approved Staging Area and Expansion of Commercial Recreational Activities Involving the Increase and Change of Number of Vehicles Allowed for Guided All-Terrain Vehicle Tours, Water Activities in the Waita Reservoir, Two Paintball Parks, and a Speedball Tournament Field on approximately 12,437.79 acres of Koloa, Kauai, Hawaii	Approved approximately 12,437.79 acres at Koloa, Island of Kauai, TMK Nos: 2-7-01:1; 2-8-01:1 & 3; 2-8-22:28; 2-9-01:1; 2-9-02:1 & 5; 2-9-03:1 & 6; 3-4-01:1; and 3-4-06:1 (see attached map)	December 6, 2005

The above action may include conditions, which affect your agency. If you would like a copy of the conditions or more information on this matter, please contact me at 587-3822, or you can log onto our website at <http://luc.state.hi.us> and click on Findings of Fact, Conclusions of Law, and Decision and Order.

Sincerely,


ANTHONY J. H. CHING
Executive Officer

Enclosure

NOTIFICATION OF SPECIAL PERMIT BY LUC

STATE/FEDERAL AGENCIES (All Petitions)

- Office of Planning
 - 1) Laura Thielen, Director
 - 2) Mary Lou Kobayashi
 - 3) Abe Mitsuda
- Department of Education
 - 1) Ms. Patricia Hamamoto
 - 2) Facilities & Support Services Branch
Mr. Ray Minami
- Department of Health
 - 1) Dr. Chiyome L. Fukino
 - 2) Office of Environmental Quality Control
- Department of Land and Natural Resources
 - Office of the Chairperson
- Department of Transportation
 - 1) Mr. Rodney Haraga
 - 2) Statewide Transportation Planning Office
- USDA Soil Conservation Service
 - Attn.: Ms. Nicole Simmons
- Department of Agriculture
 - Office of the Chairperson
- Department of Defense
 - Office of the Adjutant General
- Housing & Community Development Corporation of Hawaii
- DOH - Clean Air Branch
- DOH - Clean Water Branch
- DOH - Solid & Hazardous Waste Branch
- DOH - Safe Water Drinking Branch
- DOH - Wastewater Branch
- DLNR - Land Management Division
- DLNR - Aquatic Resources Division
- DLNR - Division of Forestry & Wildlife
- DLNR - Historic Preservation Division
- DLNR - Division of Water Resource Management
- DOT - Airports Division
- DOT - Harbors Division
- DOT - Highways Division
- U.S. Fish and Wildlife Service
- National Marine Fisheries Services
- DOH-Environmental Planning Office
 - Office of Hawaiian Affairs
- Department of Hawaiian Home Lands
- DLNR - State Parks Division

City & County of Honolulu (Oahu Petitions Only)

- Department of Planning & Permitting
- Planning Commission - Executive Secretary
- Board of Water Supply
 - Manager and Chief Engineer
- Department of Facility Maintenance - Director
- Department of Environmental Services - Director
- Department of Transportation Services - Director
- Department of Budget and Fiscal Services - Property Assessment Section
- Department of Budget and Fiscal Services - Property Technical Office
- Department of Budget and Fiscal Services - Mapping Section
- Oahu Civil Defense Agency
- Fire Department
- Department of Community Services

County of Hawaii (Hawaii Petitions Only)

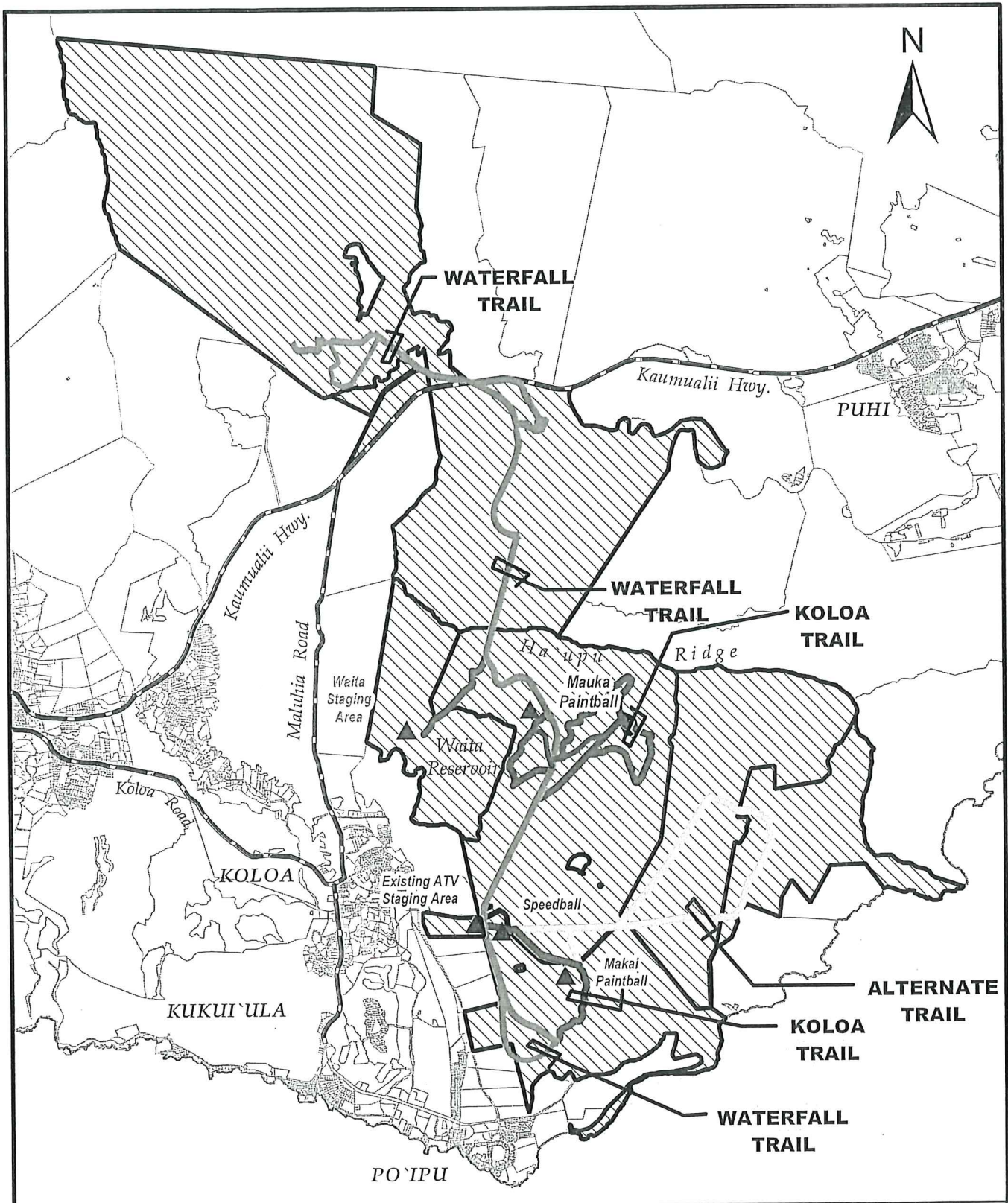
- Planning Department - Director
- Planning Commission - Chairperson
- Department of Water Supply
- Department of Public Works
- Real Property Tax Office
- Civil Defense Agency

County of Maui (Maui Petitions Only)

- Planning Department - Director
- Planning Commission - Chairperson
- Department of Water Supply
- Department of Public Works & Waste Management
- Real Property Tax Division
- Department of Housing and Human Concerns
- Civil Defense Agency

County of Kauai (Kauai Petitions Only)

- Planning Department - Director
- Planning Commission - Chairperson
- Department of Water Supply
- Department of Public Works
- Real Property Tax Division
- Kauai Civil Defense Agency
- Housing Agency



Location Map

Tax Map Key: 2-7-01: 1, 2-8-01: 1, 3, 2-8-22: 28, 2-9-01: 1,
2-9-02: 1, 5, 2-9-03: 1, 6, 3-4-01: 1, and 3-4-06: 1,

Koloa, Kauai, Hawaii

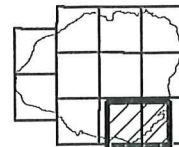
Scale: 1:70,000 feet



Approved Petition Area

EXHIBIT "A"

KAUAI



Map Location