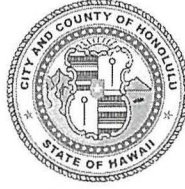


DEPARTMENT OF PLANNING AND PERMITTING  
**CITY AND COUNTY OF HONOLULU**

650 SOUTH KING STREET, 7<sup>TH</sup> FLOOR • HONOLULU, HAWAII 96813  
PHONE: (808) 768-8000 • FAX: (808) 768-6041  
DEPT. WEB SITE: [www.honolulu.gov](http://www.honolulu.gov) • CITY WEB SITE: [www.honoluludpp.org](http://www.honoluludpp.org)



RICK BLANGIARDI  
MAYOR



DAWN TAKEUCHI APUNA  
ACTING DIRECTOR

September 16, 2022

2022/SUP-3 (tb)

Mr. Larry Veray, Chair  
Pearl City Neighborhood Board No. 21  
98-1387-C Nola Street  
Pearl City, Hawaii 96782

Dear Chair Veray:

SUBJECT: Notice of Application for a State Special Permit  
Waiawa Correctional Facility  
94-670 Kamehameha Highway, Waiawa, Oahu  
Tax Map Key 9-6-005: Portion of 011

This is to notify you that a Special Use permit (SUP) application is being processed for the existing Waiawa Correctional Facility located at Tax Map Key 9-6-005: 011 (por.). The proposed SUP would remove the correctional facility's nonconforming status with respect to the State Land Use Law, Chapter 205, Hawaii Revised Statutes. No changes or improvements to the existing facility are proposed.

Attached is a summary Project description with location and site plan maps. Hard copies are available at Pearl City, Waipahu, and Mililani public libraries, and at the Pearlridge Satellite City Hall. A digital copy of the SUP application is available on the Department's website at: <https://www.honolulu.gov/dpppd/active-projects.html>

We would appreciate your Board's review and comments regarding the SUP application by **October 31, 2022**. Please reference the project number, 2022/SUP-3, in your response.

Should you have any questions, please contact Thomas Blair, of our staff, at (808) 768-8030 or [Thomas.blair@honolulu.gov](mailto:Thomas.blair@honolulu.gov).

Very truly yours,

A handwritten signature in blue ink, appearing to read "Franz Krintz".

Franz Krintz  
Acting Branch Chief  
Planning Division

FK:tc

Enclosure

DEPARTMENT OF PLANNING AND PERMITTING  
SUMMARY DESCRIPTION

PROJECT	:	Waiawa Correctional Facility
LANDOWNER	:	State of Hawaii, Department of Accounting and General Services
APPLICANT	:	Department of Accounting and General Services
APPLICATION REQUEST	:	State Special Permit (SUP)
LOCATION	:	94-670 Kamehameha Highway, Pearl City
TAX MAP KEY	:	9-6-005: 011 (portion)
LAND AREA	:	Approximately 24 acres
STATE LAND USE DISTRICT	:	Agricultural District
EXISTING CITY ZONING	:	F-1 Federal and Military
DEVELOPMENT PLAN AREA	:	Outside of the Community Growth Boundary in the Central Oahu Sustainable Communities Plan in an area designated for Agriculture and Preservation with a symbol for the Correctional Facility.
PUBLIC INFRASTRUCTURE MAP	:	No symbol is on the project site or vicinity.
EXISTING USE	:	Minimum security correctional facility.
SURROUNDING LAND USE	:	Forest and open space.
PROPOSAL	:	The proposed SUP would remove the correctional facility's nonconforming status with respect to the State Land Use Law, Chapter 205, Hawaii Revised Statutes. No improvements are proposed at this time.

Figure 1: PROJECT LOCATION MAP

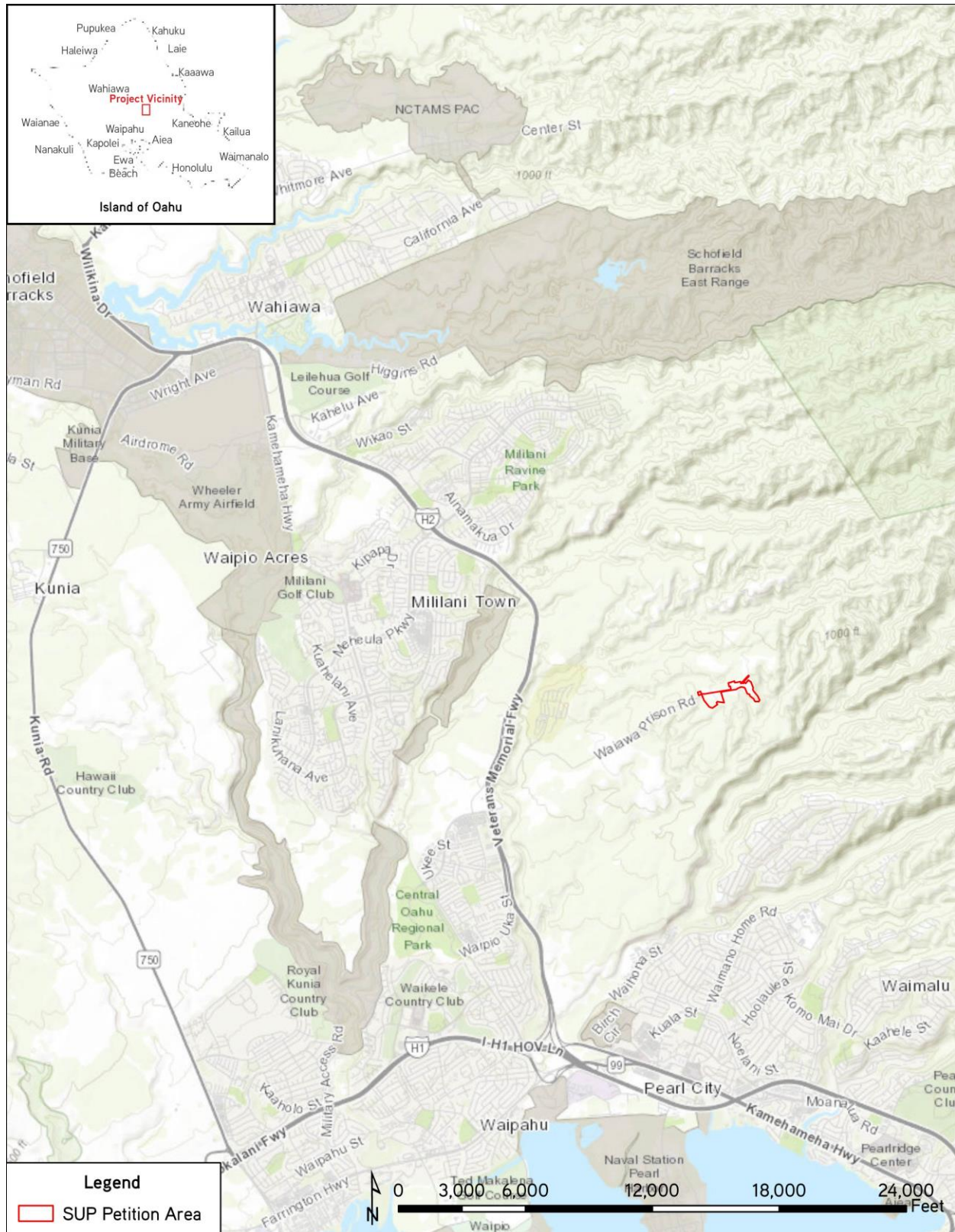
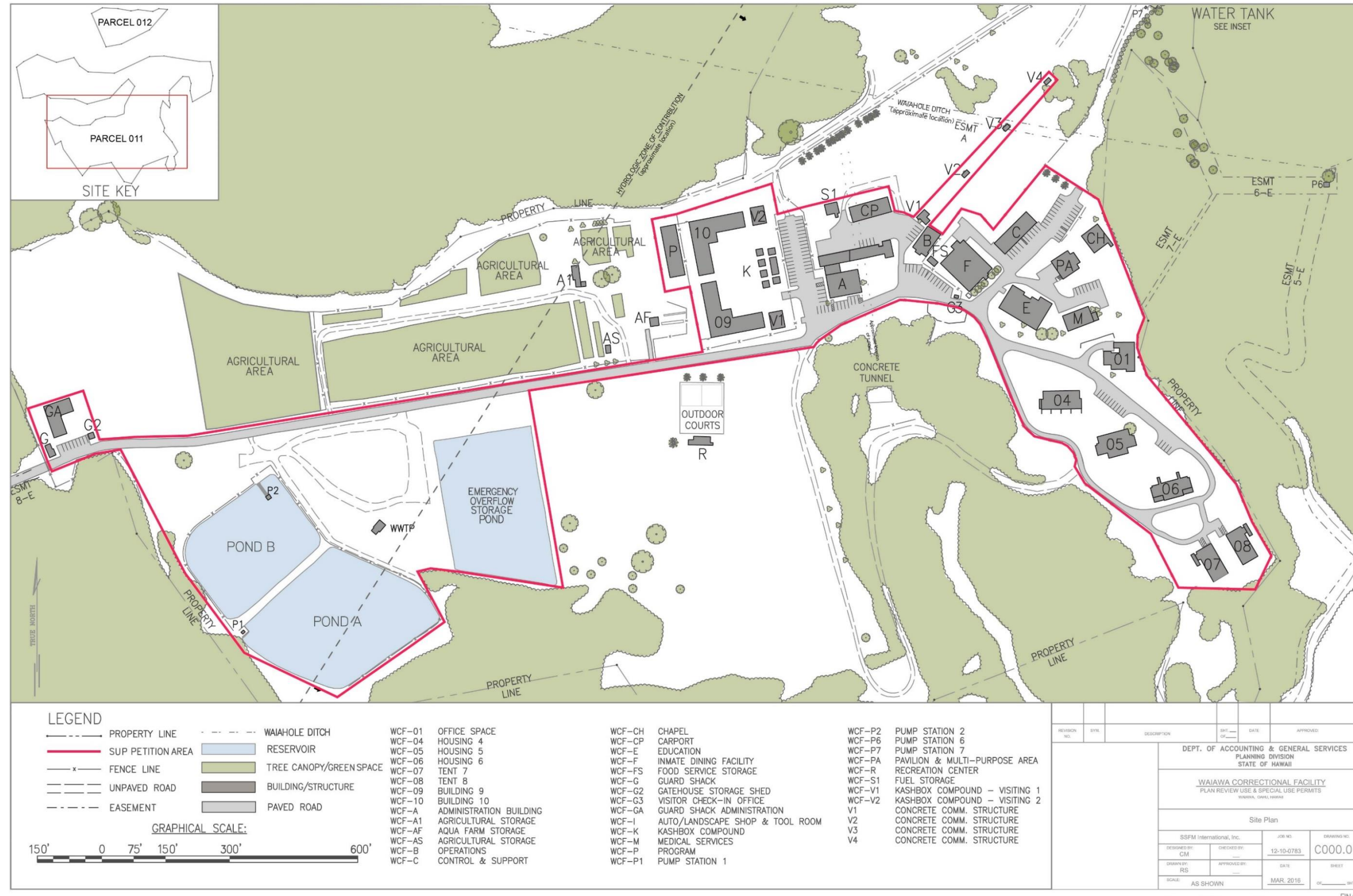


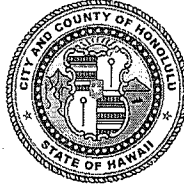
Figure 4: SITE PLAN



DEPARTMENT OF PLANNING AND PERMITTING  
**CITY AND COUNTY OF HONOLULU**

650 SOUTH KING STREET, 7<sup>TH</sup> FLOOR • HONOLULU, HAWAII 96813  
PHONE: (808) 768-8000 • FAX: (808) 768-6041  
DEPT. WEB SITE: [www.honolulu.gov](http://www.honolulu.gov) • CITY WEB SITE: [www.honolulu.gov](http://www.honolulu.gov)

RICK BLANGIARDI  
MAYOR



DAWN TAKEUCHI APUNA  
ACTING DIRECTOR

September 16, 2022

2022/SUP-3 (tb)

**MEMORANDUM**

TO: City, State, and Federal Agencies

FROM: <sup>FK</sup> Franz Kraintz, Acting Branch Chief  
Community Planning Branch  
Department of Planning and Permitting

SUBJECT: Application for a State Special Permit  
Waiawa Correctional Facility  
94-670 Kamehameha Highway, Waiawa, Oahu  
Tax Map Key 9-6-005: Portion of 011

An application for a State Special Permit (SUP) has been accepted for review for the existing Waiawa Correctional Facility as a permitted use on an approximately 24-acre portion of a 157.9-acre State-owned parcel, Tax Map Key 9-6-005: 011 (por.), located in the State Land Use Agricultural District. The proposed SUP would remove the correctional facility's nonconforming status with respect to the State Land Use Law, Chapter 205, Hawaii Revised Statutes (HRS). No changes or improvements to the existing facility are proposed.

The SUP application is prepared in accordance with Chapter 205.6 (a) of the HRS, where the county Planning Commission may permit certain "unusual and reasonable uses" within the State Land Use Agricultural District other than those for which the district is classified. Also, given that the proposed site is in excess of 15 acres, per the HRS, Chapter 205.6 (d), the SUP application will be forwarded to the State Land Use Commission following the recommendation by the county Planning Commission.

Please evaluate the impact of the continued use of the correctional facility on the public facilities and services planned or provided by your Department, and indicate whether they are adequate. If public facilities and services are not adequate, indicate what improvements would be necessary to support the correctional facility.

Attached is a summary project description with location and site plan maps. The SUP application is available on the Department's website at: <https://www.honolulu.gov/dpppd/active-projects.html>. Due to time constraints imposed by the rules of the Planning Commission, your reply is due to this Department by: **October 17, 2022**. Please reference the project number **2022/SUP-3** in your response. Should you have any questions, contact Thomas Blair, of our staff, at (808)768-8030 or [Thomas.blair@honolulu.gov](mailto:Thomas.blair@honolulu.gov).

FK:tc

Enclosure

DEPARTMENT OF PLANNING AND PERMITTING  
SUMMARY DESCRIPTION

PROJECT	:	Waiawa Correctional Facility
LANDOWNER	:	State of Hawaii, Department of Accounting and General Services
APPLICANT	:	Department of Accounting and General Services
APPLICATION REQUEST	:	State Special Permit (SUP)
LOCATION	:	94-670 Kamehameha Highway, Pearl City
TAX MAP KEY	:	9-6-005: 011 (portion)
LAND AREA	:	Approximately 24 acres
STATE LAND USE DISTRICT	:	Agricultural District
EXISTING CITY ZONING	:	F-1 Federal and Military
DEVELOPMENT PLAN AREA	:	Outside of the Community Growth Boundary in the Central Oahu Sustainable Communities Plan in an area designated for Agriculture and Preservation with a symbol for the Correctional Facility.
PUBLIC INFRASTRUCTURE MAP	:	No symbol is on the project site or vicinity.
EXISTING USE	:	Minimum security correctional facility.
SURROUNDING LAND USE	:	Forest and open space.
PROPOSAL	:	The proposed SUP would remove the correctional facility's nonconforming status with respect to the State Land Use Law, Chapter 205, Hawaii Revised Statutes. No improvements are proposed at this time.

Figure 1: PROJECT LOCATION MAP

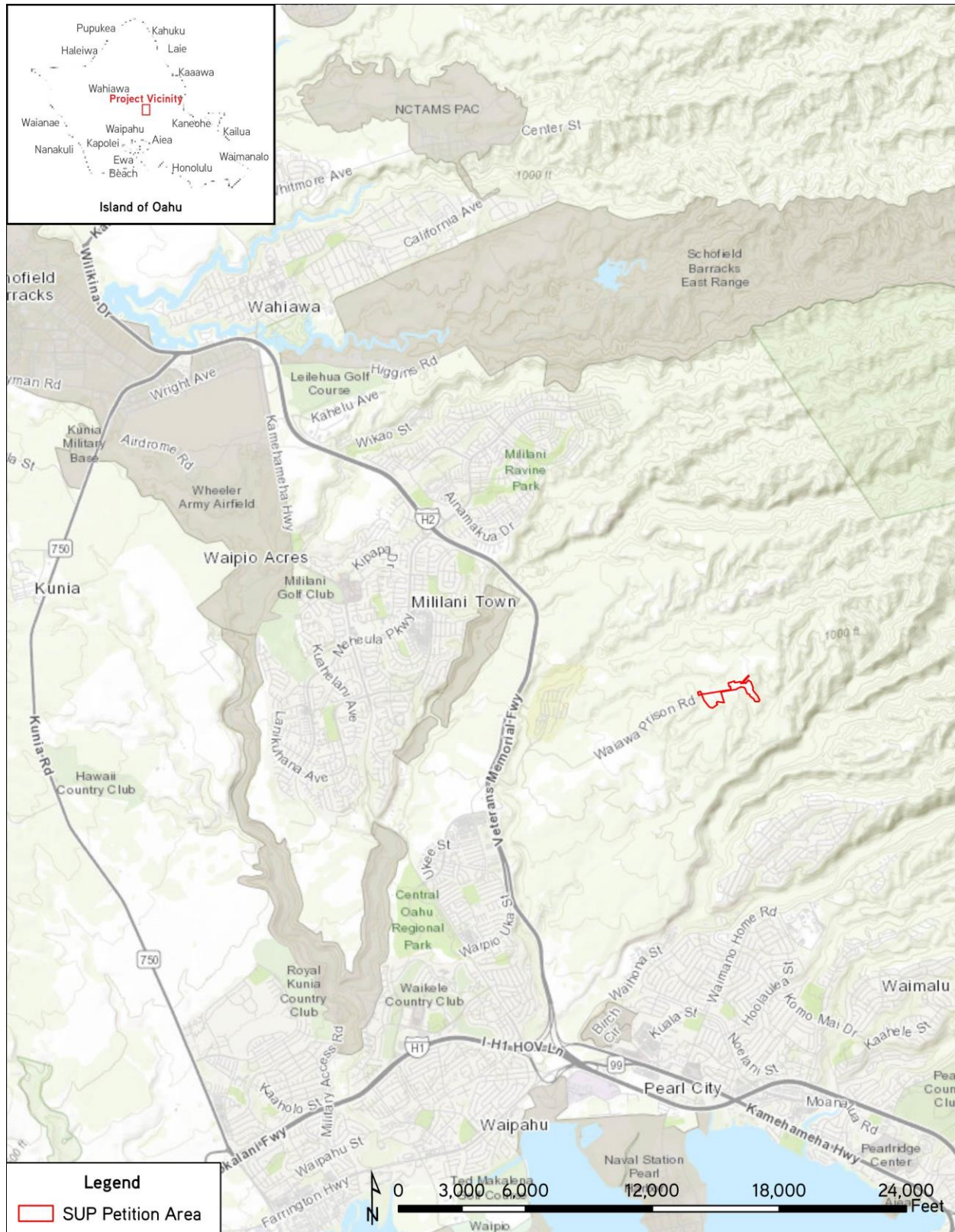
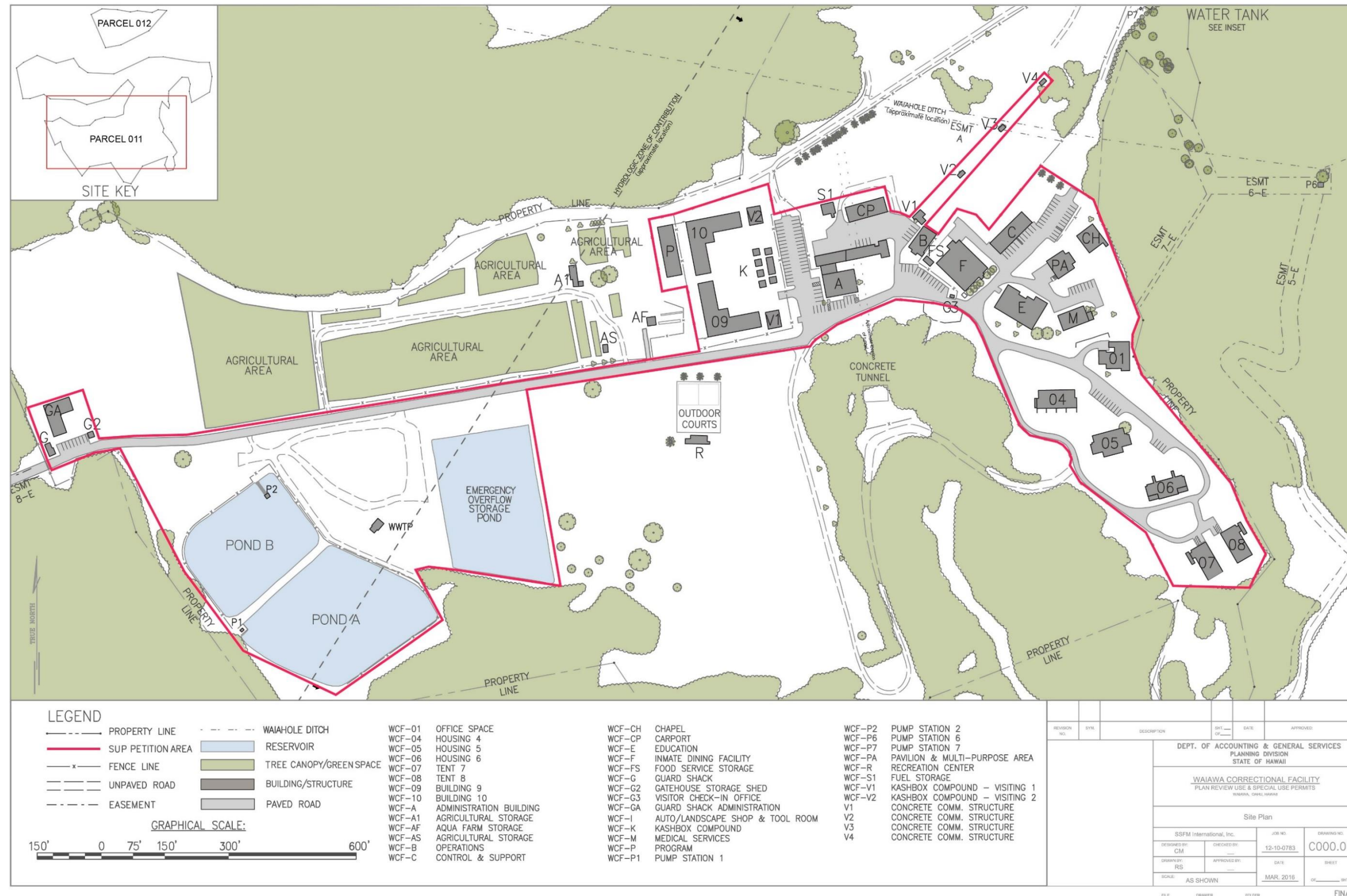


Figure 4: SITE PLAN

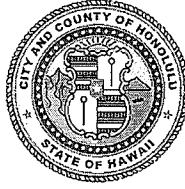




DEPARTMENT OF PLANNING AND PERMITTING  
**CITY AND COUNTY OF HONOLULU**

650 SOUTH KING STREET, 7<sup>TH</sup> FLOOR • HONOLULU, HAWAII 96813  
PHONE: (808) 768-8000 • FAX: (808) 768-6041  
DEPT. WEB SITE: [www.honolulu.dpp.org](http://www.honolulu.dpp.org) • CITY WEB SITE: [www.honolulu.gov](http://www.honolulu.gov)

RICK BLANGIARDI  
MAYOR



DAWN TAKEUCHI APUNA  
ACTING DIRECTOR

September 16, 2022

2022/SUP-3 (tb)

**MEMORANDUM**

TO: Community Organizations, Elected Officials,  
and Other Interested Parties

FROM: <sup>FK</sup> Franz Krintz, Acting Branch Chief  
Community Planning Branch  
Department of Planning and Permitting

Subject: Application for a State Special Permit  
Waiawa Correctional Facility  
94-670 Kamehameha Highway, Waiawa, Oahu  
Tax Map Key 9-6-005: Portion of 011

This is to notify you that an application for a State Special Permit (SUP) has been accepted for review for the existing Waiawa Correctional Facility, located on an approximately 24-acre portion of a 157.9-acre State-owned parcel, Tax Map Key 9-6-005: 011 (por.), in the State Land Use Agricultural District. The proposed SUP would remove the correctional facility's nonconforming status with respect to the State Land Use Law, Chapter 205, Hawaii Revised Statutes (HRS). No changes or improvements to the existing facility are proposed.

The SUP application is prepared in accordance with Chapter 205.6 (a) of the HRS, where the county Planning Commission may permit certain "unusual and reasonable uses" within the State Land Use Agricultural District other than those for which the district is classified. Also, given that the proposed site is in excess of 15 acres, per the HRS, Chapter 205.6 (d), the SUP application will be forwarded to the State Land Use Commission following the recommendation by the county Planning Commission.

Attached is a summary project description with location and site plan maps. The SUP application is available on the Department's website at: <https://www.honolulu.gov/dpppd/active-projects.html>. Hard copies are also available at Pearl City, Waipahu, and Mililani public libraries, and at the Pearlridge Satellite City Hall.

Due to time constraints imposed by the rules of the Planning Commission, your reply is due to this Department by: **October 17, 2022**. Please reference the project number **2022/SUP-3** in your response. Should you have any questions, contact Thomas Blair, of our staff, at (808)768-8030 or [Thomas.blair@honolulu.gov](mailto:Thomas.blair@honolulu.gov).

FK:tc

Enclosure

DEPARTMENT OF PLANNING AND PERMITTING  
SUMMARY DESCRIPTION

PROJECT	:	Waiawa Correctional Facility
LANDOWNER	:	State of Hawaii, Department of Accounting and General Services
APPLICANT	:	Department of Accounting and General Services
APPLICATION REQUEST	:	State Special Permit (SUP)
LOCATION	:	94-670 Kamehameha Highway, Pearl City
TAX MAP KEY	:	9-6-005: 011 (portion)
LAND AREA	:	Approximately 24 acres
STATE LAND USE DISTRICT	:	Agricultural District
EXISTING CITY ZONING	:	F-1 Federal and Military
DEVELOPMENT PLAN AREA	:	Outside of the Community Growth Boundary in the Central Oahu Sustainable Communities Plan in an area designated for Agriculture and Preservation with a symbol for the Correctional Facility.
PUBLIC INFRASTRUCTURE MAP	:	No symbol is on the project site or vicinity.
EXISTING USE	:	Minimum security correctional facility.
SURROUNDING LAND USE	:	Forest and open space.
PROPOSAL	:	The proposed SUP would remove the correctional facility's nonconforming status with respect to the State Land Use Law, Chapter 205, Hawaii Revised Statutes. No improvements are proposed at this time.

Figure 1: PROJECT LOCATION MAP

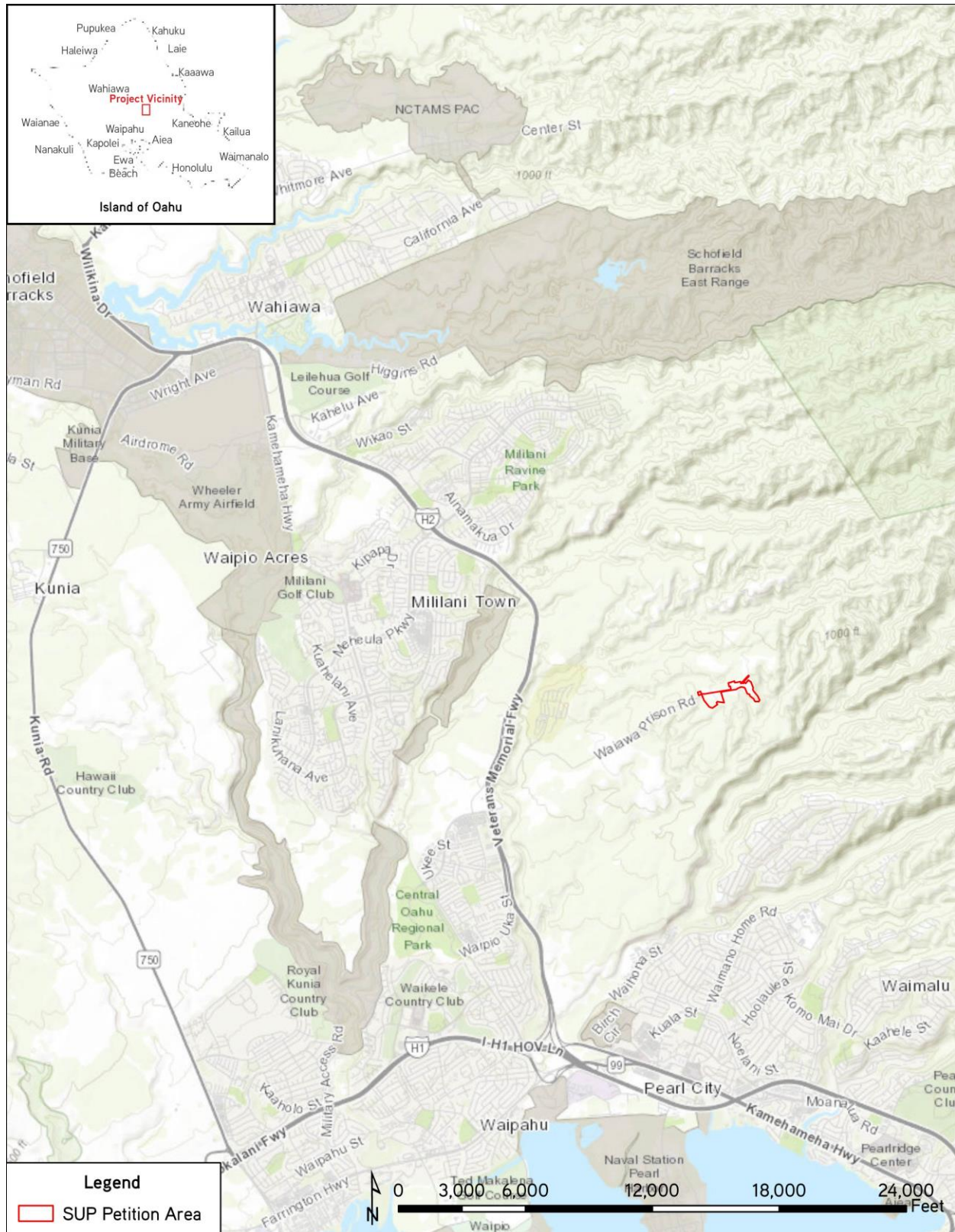
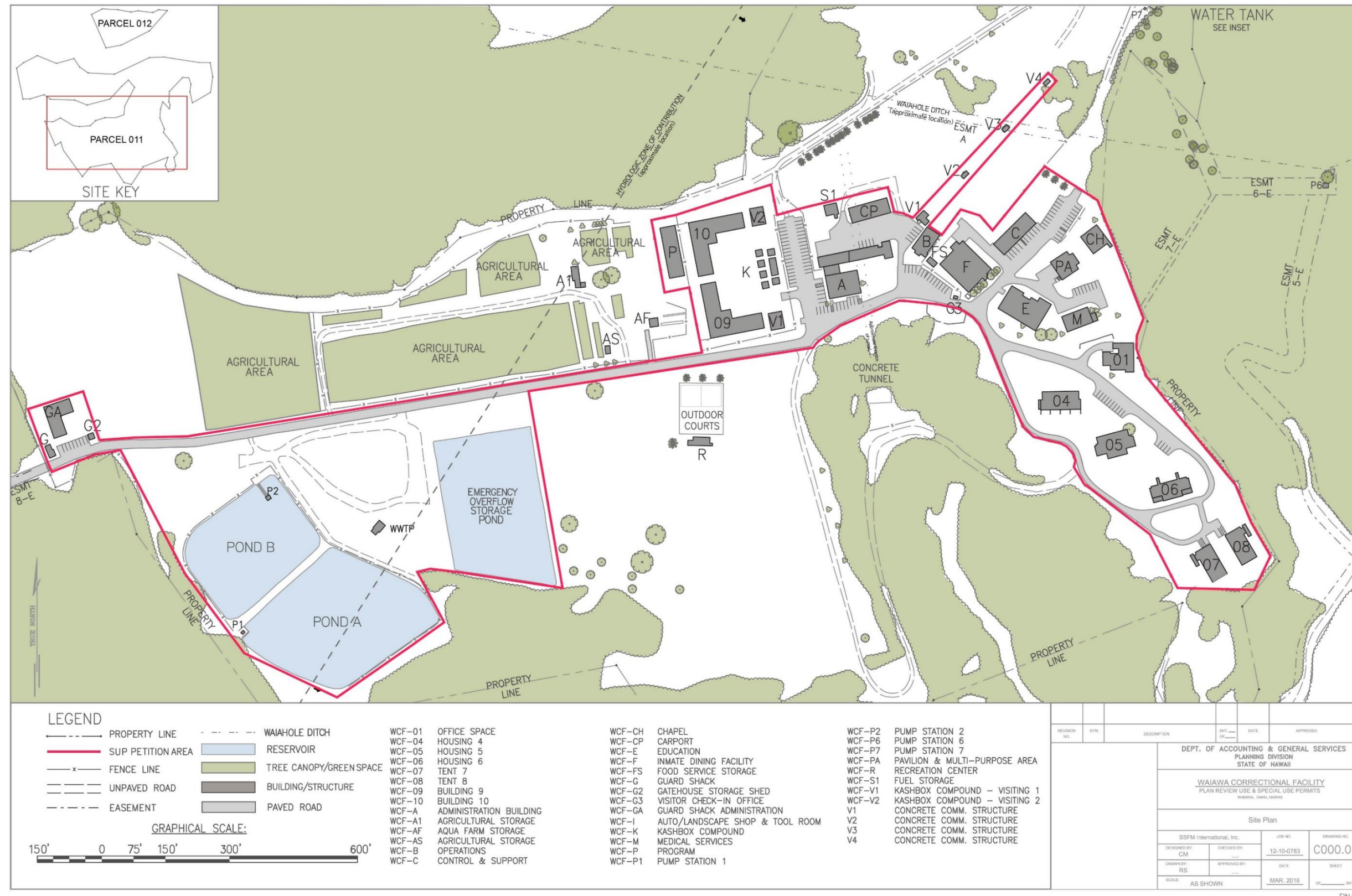


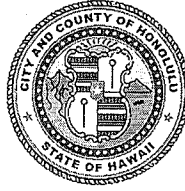
Figure 4: SITE PLAN



DEPARTMENT OF PLANNING AND PERMITTING  
**CITY AND COUNTY OF HONOLULU**

650 SOUTH KING STREET, 7<sup>TH</sup> FLOOR • HONOLULU, HAWAII 96813  
PHONE: (808) 768-8000 • FAX: (808) 768-6041  
DEPT. WEB SITE: [www.honoluluodpp.org](http://www.honoluluodpp.org) • CITY WEB SITE: [www.honolulu.gov](http://www.honolulu.gov)

RICK BLANGIARDI  
MAYOR



DAWN TAKEUCHI APUNA  
ACTING DIRECTOR

September 16, 2022

2022/SUP-3 (tb)

**MEMORANDUM**

TO: Libraries and Satellite City Hall

FROM: <sup>FK</sup> Franz Kraintz, Acting Branch Chief  
Community Planning Branch  
Department of Planning and Permitting

SUBJECT: Notice of Application for a State Special Permit  
Waiawa Correctional Facility  
94-670 Kamehameha Highway, Waiawa, Oahu  
Tax Map Key 9-6-005: Portion of 011

Enclosed are two hard copies of the subject Special Use Permit application (SUP). We suggest that one hard copy be retained at your office and the other be made available for loan.

Due to time constraints imposed by the rules of the Planning Commission, comments from the public are due to this Department by: **October 17, 2022**. Please reference the project number **2022/SUP-3** in your response. Interested parties may access the SUP application on the Department's website at: <https://www.honolulu.gov/dpppd/active-projects.html>.

Should you have any questions, contact Thomas Blair, of our staff, at (808)768-8030 or [Thomas.blair@honolulu.gov](mailto:Thomas.blair@honolulu.gov). Thank you for your assistance.

FK:tc

Enclosure