

December 14, 1970

Hawaii Planning Commission
County of Hawaii
25 Aupuni Street
Hilo, Hawaii 96720

Attention: Mr. Raymond Suefuji, Planning Director

Gentlemen:

At its meeting on December 11, 1970, the Land Use Commission voted to approve a special permit to the Department of Public Works, County of Hawaii (SP70-84), to quarry gravel material to be utilized for government roads at Honokaia, Hamakua, Hawaii, identifiable by Tax Map Key 4-6-11: portion of parcel 13, subject to the conditions set forth by the Hawaii Planning Commission.

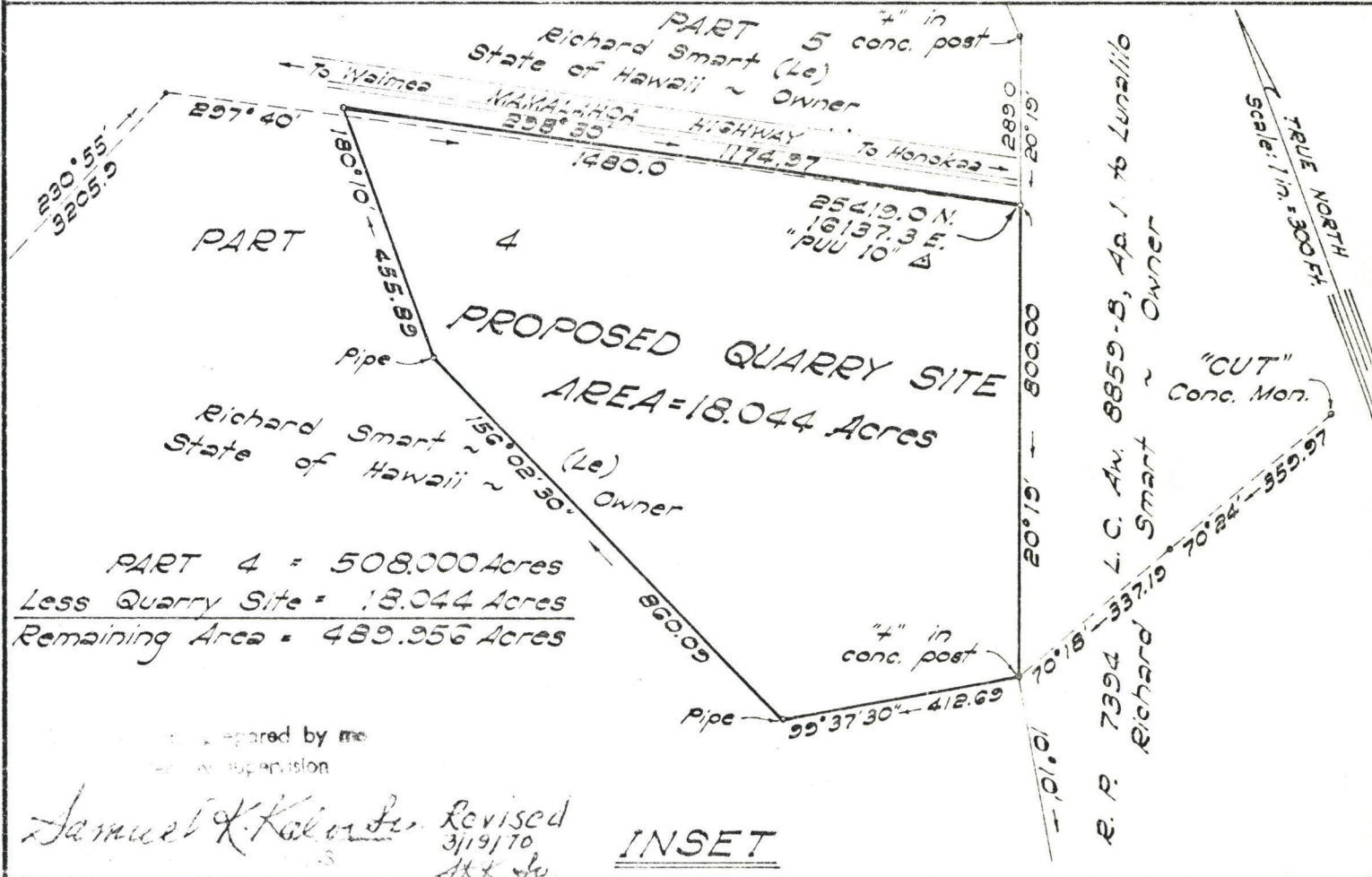
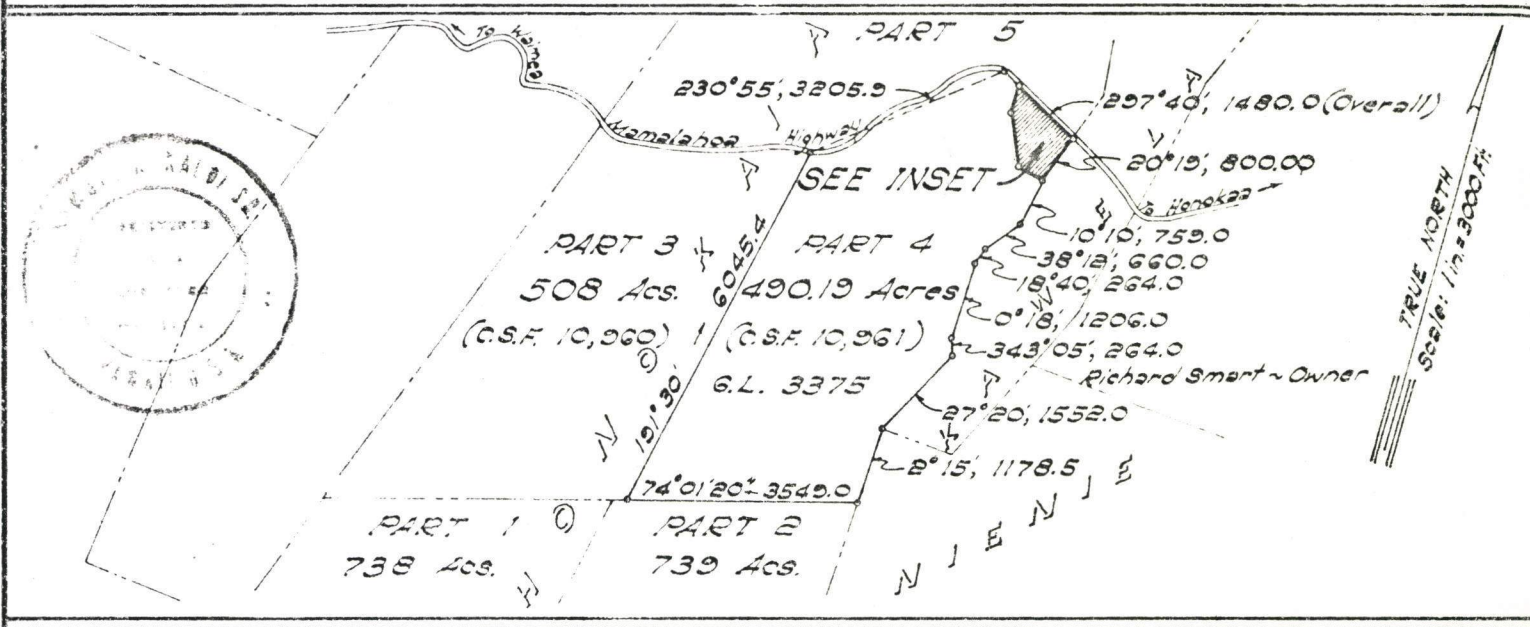
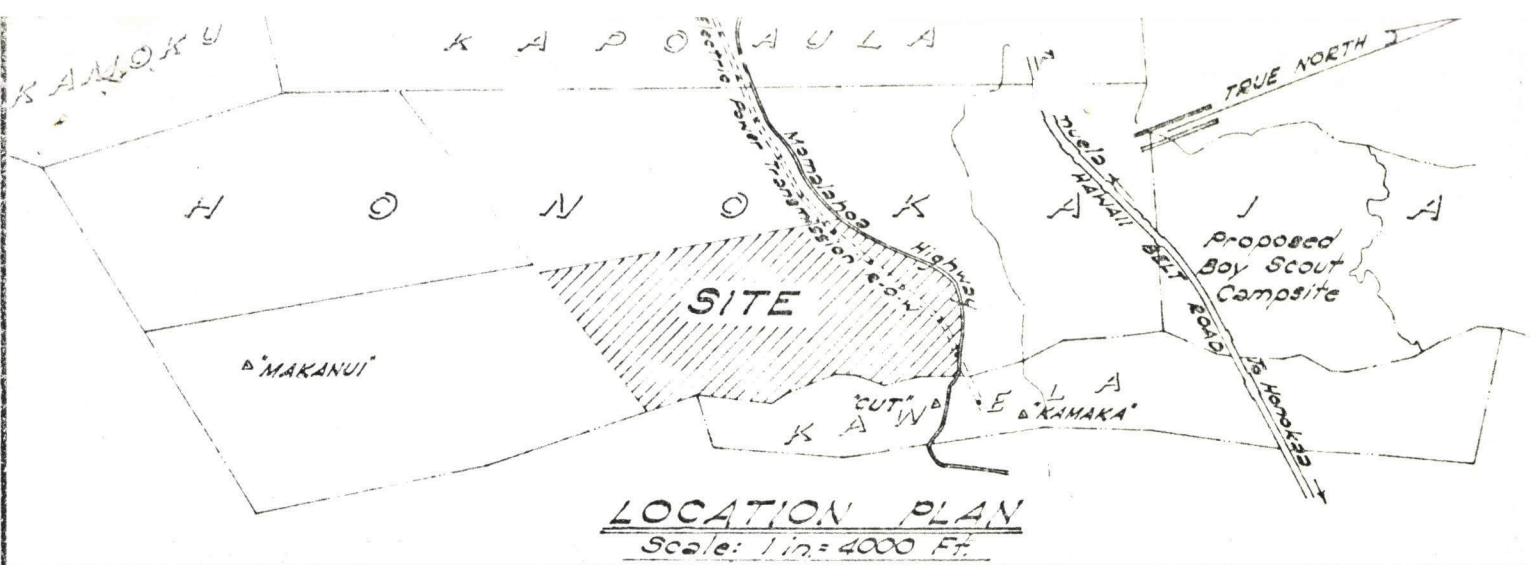
Enclosed for your information is the staff report.

Very truly yours,

RAMON DURAN
Executive Officer

Enclosures 2

cc: Dept. of Public Works, County of Hawaii
Hawaii Tax Administrator
Property Technical Services, Dept. of Taxation
Tax Maps Branch, Dept. of Taxation



BUREAU OF PLANS & SURVEYS - DEPT. OF PUBLIC WORKS - COUNTY OF HAWAII

SUBMITTED BY: Heath T. Tanaka DATE 2/16/70
 BUREAU HEAD
 APPROVED BY: Arthur J. Semis DATE 2-16-70
 CHIEF ENGINEER

PROPOSED QUARRY SITE
 Portion of Part 4
 (C.S.F. 10,961)
 G. L. 3375
 Honokaa, Hamakua, Hawaii

Plan by S.K.K., Sr. Traced by P.K. Date: Feb. 11, 1970