

June 16, 1970

Hawaii Planning Commission
County of Hawaii
25 Aupuni Street
Hilo, Hawaii, HI 96720

Attention: Mr. Raymond Suefuji, Planning Director

Gentlemen:

At its meeting on June 12, 1970, the Land Use Commission voted to approve a special permit to Yamada & Sons, Inc. (SP70-79) to allow the removal of cinder material from a 2.3-acre parcel of land situated in the State's Agricultural District at Keokea, South Kona, Hawaii, identifiable by Tax Map Key 8-4-15: parcel 13, subject to the conditions set forth by the County of Hawaii.

Enclosed for your information is the staff report.

Very truly yours,

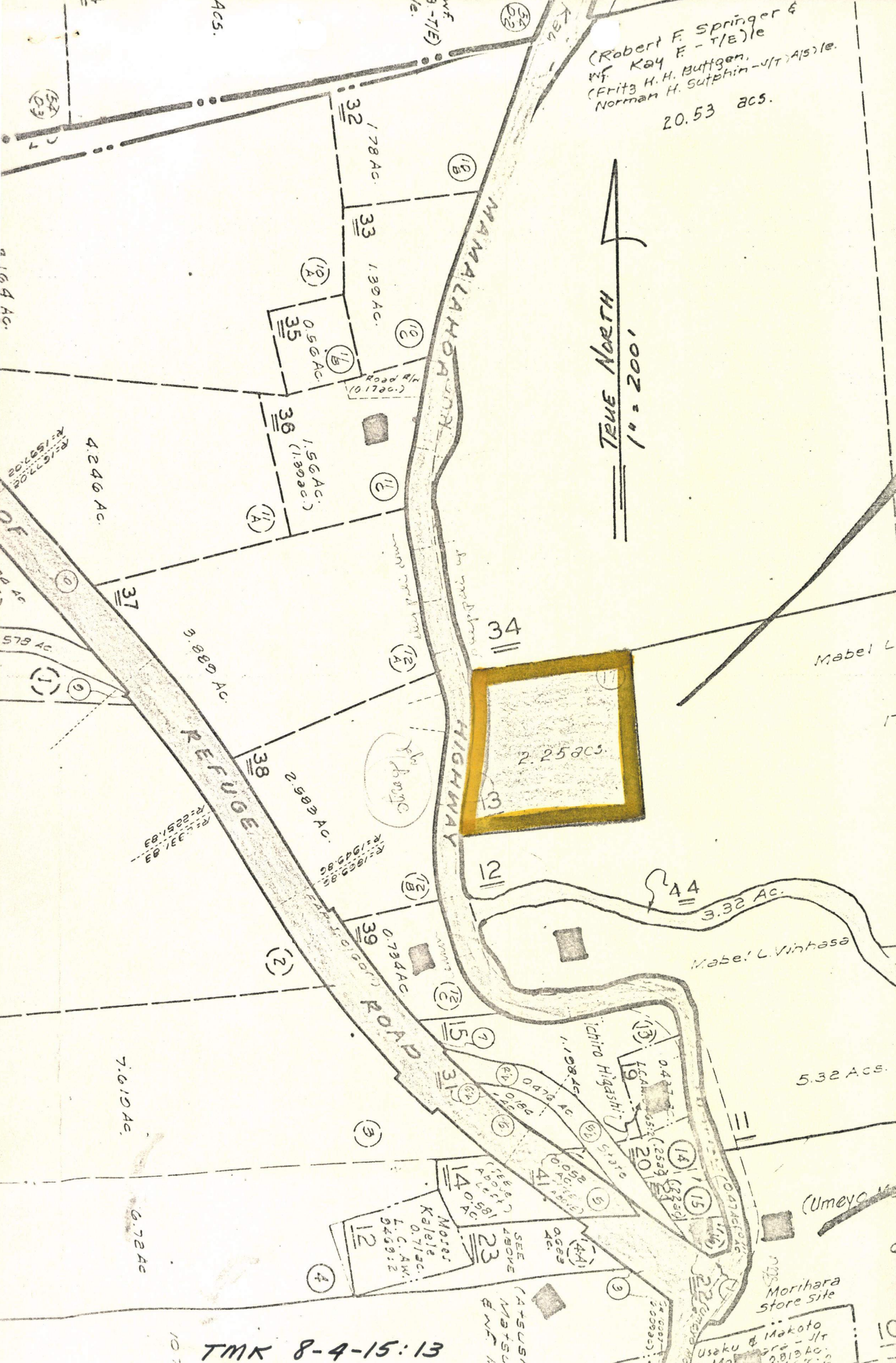
RAMON DURAN
Executive Officer

Enclosures

cc: Mr. Donald K. Yamada
Hawaii Tax Administrator
Property Technical Services, Dept. of Taxation
Tax Maps Branch, " " "

(Robert F. Springer & Wf Kay F - T/E)le
(Fritz H. H. Buttgen, Norman H. Sutphin - JT A/S)le.
20.53 acs.

TRUE NORTH
100° - 01'



AcS.
16.4 Ac.
4.246 Ac.
578 Ac.
5.889 Ac.
2.589 Ac.
7.619 Ac.
6.724 Ac.

32 1.78 Ac.
33 1.39 Ac.
35 0.56 Ac.
36 1.56 Ac. (1.39 ac.)
37
38 2.589 Ac.
39 0.734 Ac.
40
41
42
43
44 3.32 Ac.

18
19
20
21
22
23
24
25
26
27
28
29
30
31
34 2.25 acs.
35
36
37
38
39
40
41
42
43
44
45
46
47
48
49
50
51
52
53
54

TMK 8-4-15:13

Mores Kalele L.C.A.W. 0.71 ac. 5469:2
SEE ABOVE MATSUMI ENCL. IN
(A+SUSHI MATSUMI ENCL. IN)
Morihara store site
Usaku & Makoto 2.813 ac. 9467:2
Umeyo



BM 594
E E I
A
772

Cemeteries
Well
Water

KERRY WATSON →

Honaunau School

Honaunau PO

Cem. Church Steeple

Honaunau Field

Rain Shed

TMK 8-4-15:13

Puu Kalapa
VABM 1270

Keokea

Watercourse

Kiilae

K I I L A

Water

KAULEOLI
12

HONAUNAU

K A U L E O L

FOREST RESERVE

K E A

KEALIA

BM 127