

July 22, 1969

Planning Commission
County of Hawaii
25 Aupuni Street
Hilo, Hawaii

Gentlemen:

At its meeting on July 18, 1969, the Land Use Commission voted to approve the grant of a special permit to Mr. Richard Smart (SP69-62) for the construction of a plant for the manufacture of concrete blocks, pre-stress concrete slabs and a batching plant for Volcanite, Ltd., at Waikoloa, South Kohala, Hawaii, identifiable by Tax Map Key 6-7-01: 3, subject to the conditions established by the Hawaii County Planning Commission.

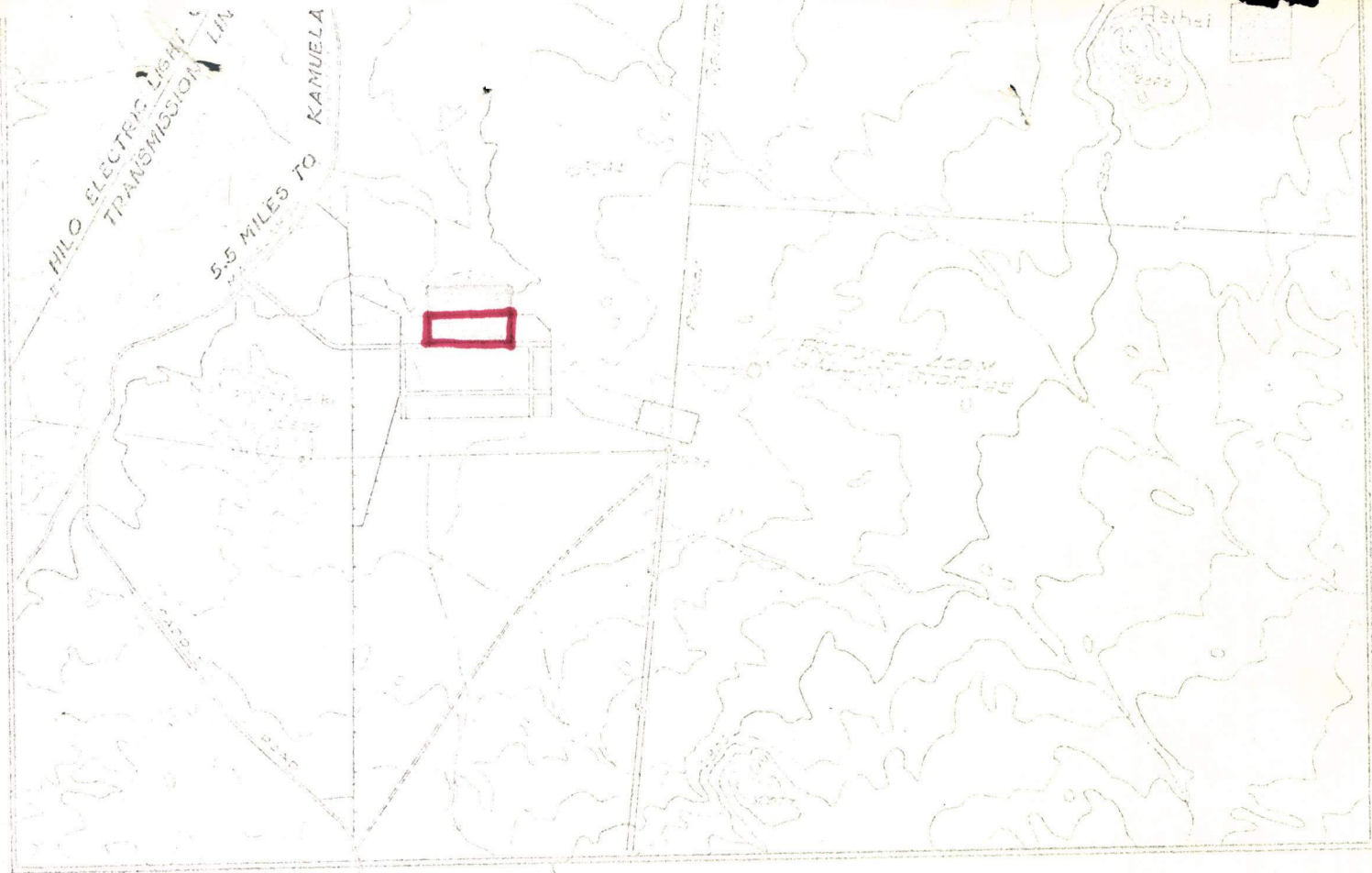
Enclosed for your information is the staff memorandum.

Very truly yours,

RAMON DURAN
Executive Officer

Encl.

cc: Hawaii Planning Comm.
Department of Taxation
Mr. Richard Smart



VICINITY MAP
Scale: 1 in. = 5000 ft.

