

March 20, 1972

Mr. William G. Among, Director
Dept. of Hawaiian Home Lands
P. O. Box 1879
Honolulu, Hawaii 96805

Dear Mr. Among:

The petition by the Department of Hawaiian Home Lands (A71-306) to amend the land use district boundaries from an Agricultural into the Urban District at Panaewa Tract, Waiakea, South Hilo, Hawaii, identifiable by Tax Map Key 2-2-47: portions of 1, 7, 8, 9, 13, and 31, was approved by the Land Use Commission at its meeting on March 17, 1972.

Prior to taking action on this petition, the enclosed memorandum was presented to the Commission.

For your information, we are enclosing herewith a copy of Section 2.33, "Performance Time", of the Rules and Regulations of the Commission.

Very truly yours,

TATSUO FUJIMOTO
Executive Officer

Enclosures - 3

cc: Mr. Thomas K. Mahaulu
Hawaii Planning Department
Hawaii Dept. of Water Supply
Hawaii District Office, Dept. of Taxation
Property Tech. Serv., Dept. of Taxation
Tax Maps Branch, Dept. of Taxation
Chairman of the Board, DLNR
Planning Office, DLNR
Dept. of Transportation
Facilities and Aux. Svcs. Br., DOE
Planning Branch, DAGS
Planning Division, DPED
Land Use Commission

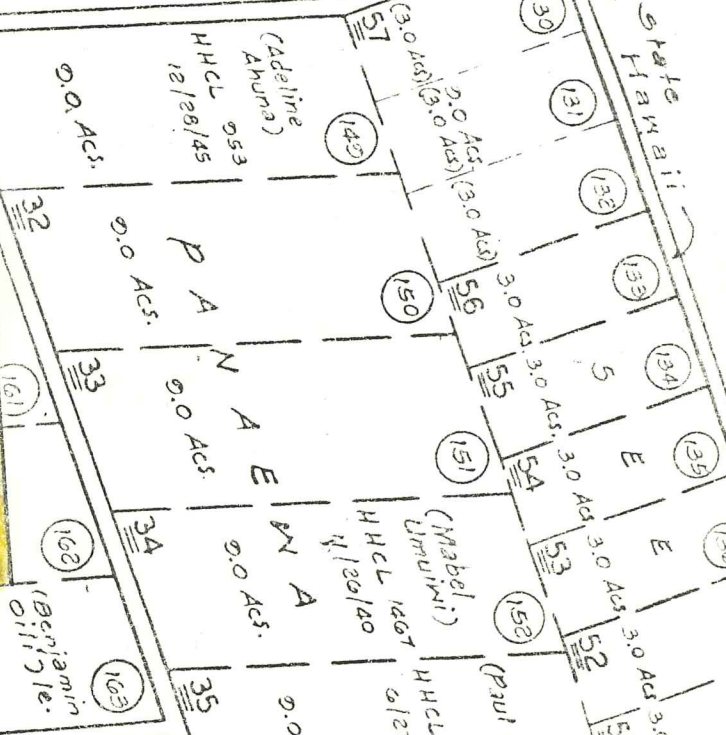
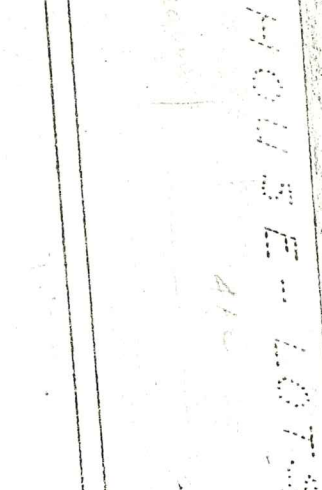
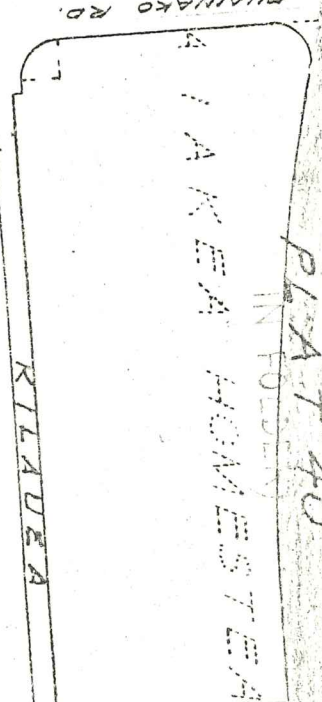
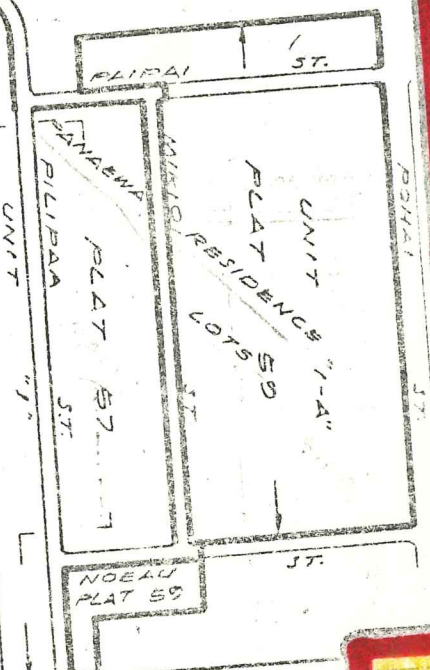
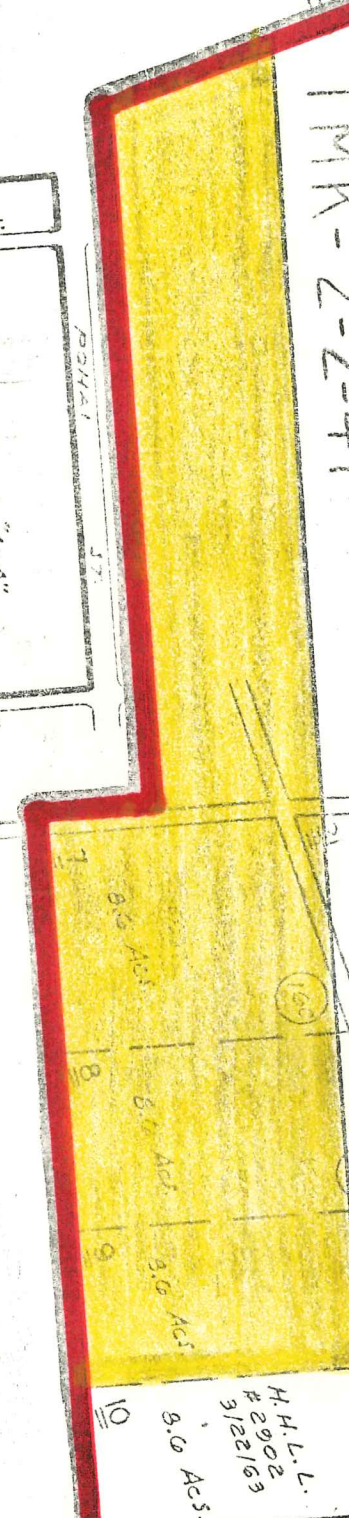
Hawaiian Homes Commission
SEC. 1. PLAT 13

0.86 ACS

TMK-2-2-47

*Akinaka
proposed
development plan*

Boundary line of future lots



True North
1" = 500'