

January 10, 1972

Mr. KeNam Kim
State Comptroller
Department of Accounting &
General Services
465 South King Street
Honolulu, Hawaii 96813

Dear Mr. Kim:

The petition by the Department of Accounting & General Services (A71-300) to amend the land use district boundaries from an Agricultural District into an Urban District at Kapaau, North Kohala, Hawaii, identifiable by Tax Map Key 5-3-05: parcel 30 and portion of parcel 6, was approved by the Land Use Commission at its meeting on January 7, 1972.

Prior to taking action on this petition, the enclosed memorandum was presented to the Commission.

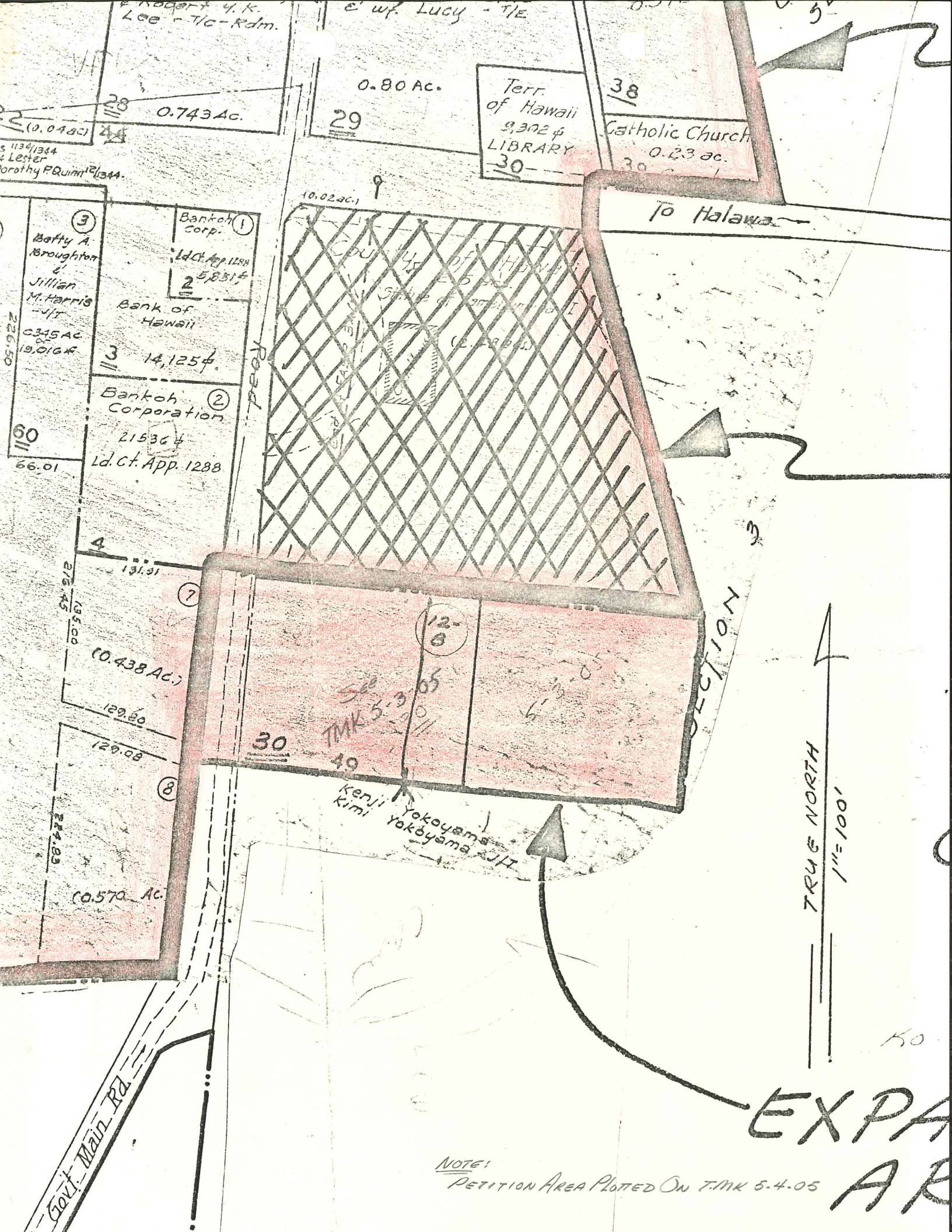
For your information, we are enclosing herewith a copy of Section 2.33, "Performance Time," of the Rules and Regulations of the Commission.

Very truly yours,

TATSUO FUJIMOTO
Executive Officer

Enclosures 3

cc: Hawaii Planning Department
Tax Maps Recorder, Dept. of Tax.
Property Tech. Services, Dept. of Tax.
Hawaii District Office, Dept. of Tax.
Planning Office, DLNR
Chairman of the Board, DLNR
Dept. of Transportation
Facilities & Aux. Svcs. Branch, Dept. of Education
Planning Division, DPED
Division of Public Works, DAGS
Hawaii Board of Water Supply
Land Use Commission



Lee - T/C - Rdm.

0.80 Ac.

Terr. of Hawaii
9,302 sq
LIBRARY
30

38

Catholic Church
0.23 ac.

0.743 Ac.

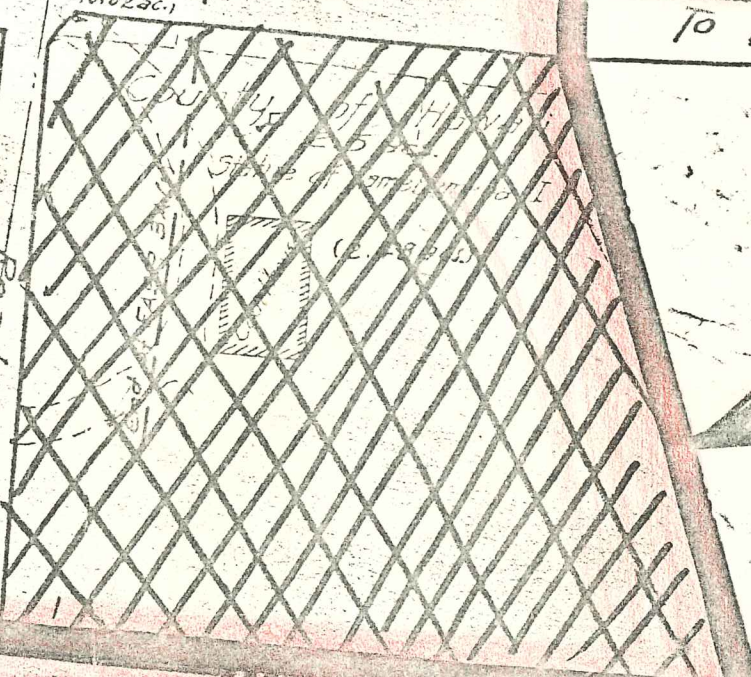
29

10.02 ac.

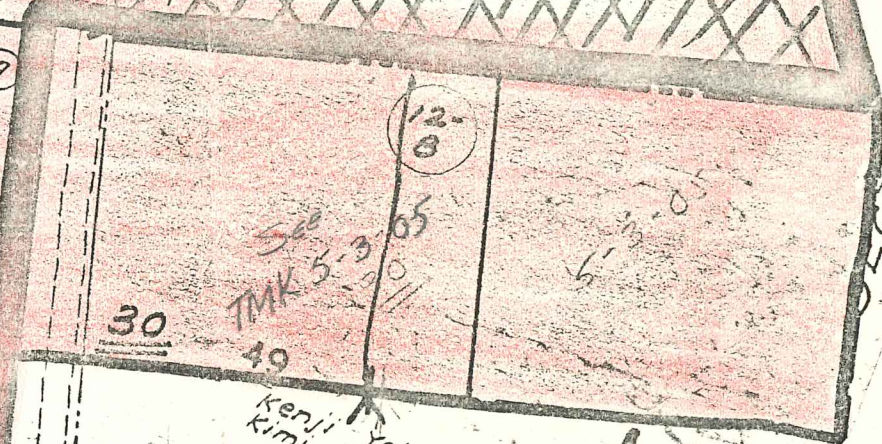
To Halawa

1134/1344
& Lester
Dorothy F. Quinn 12/1344

3
Bobby A. Broughton
Jillian M. Harris
0.345 AC
19,016 sq ft
14,125 \$
Bank of Hawaii
Bankoh Corp.
2
1d. Ct. App. 1288
5,831 \$
Bankoh Corporation
2
21536 \$
1d. Ct. App. 1288



60
66.01
4
131.91
7
129.80
129.08
8
129.08
0.570 AC.



TRUE NORTH
1" = 100'

Govt. Main Rd.

EXPA
AR

NOTE:
PETITION AREA PLOTTED ON TMK 5-4-05