

XXXXXXXXXXXX  
XXXXXXXXXXXX

July 2, 1971

Tatsuo Fujimoto  
XXXXXXXXXXXX

Mr. Sunao Kido, Chairman & Member  
Board of Land & Natural Resources  
465 South King Street  
Honolulu, Hawaii 96813

Dear Mr. Kido:

The petition by the Board of Land and Natural Resources (A71-272) to amend the Land Use District Boundaries from an Agricultural District into an Urban District at Kaumana, South Hilo, Hawaii, identifiable by Tax Map Key 2-5-03: 20 and portion of 21, was approved by the Land Use Commission at its meeting on June 30, 1971.

Prior to taking action on this petition, the enclosed memorandum was presented to the Commission.

For your information, we are enclosing herewith a copy of Section 2.33, "Performance Time", of the Rules and Regulations of the Commission.

Very truly yours,

TATSUO FUJIMOTO  
Executive Officer

Enclosures: Map, etc.

cc: Hawaii Planning Dept.  
Tax Maps Recorder, Dept. of Tax.  
Planning Office, DLNR  
Facilities & Auxiliary Svcs. Br., DOE  
Dept. of Transportation  
Planning Division, DPED  
Board of Water Supply, Hawaii  
Planning Division, DAGS  
Hawaii Tax Administrator  
Property Technical Services, Dept. of Tax.  
Land Use Commission

TRUE NORTH  
1" = 300'

PLA  
GRANT  
4130

Denis Y. Wong  
& wf. Roberta  
K. - TIE

2.50 Ac.

39

Alfred Nakamura

3.445 Ac.

38

13610, 8935  
22935, 8114  
HALAHIHI

PLAT  
GRANT

75.418 AC.

"A"

GRANT

5-FT. WD. PERP. PIPELINE ESM'T in favor of County of Hawaii

20.204 AC. 7

A

89

26

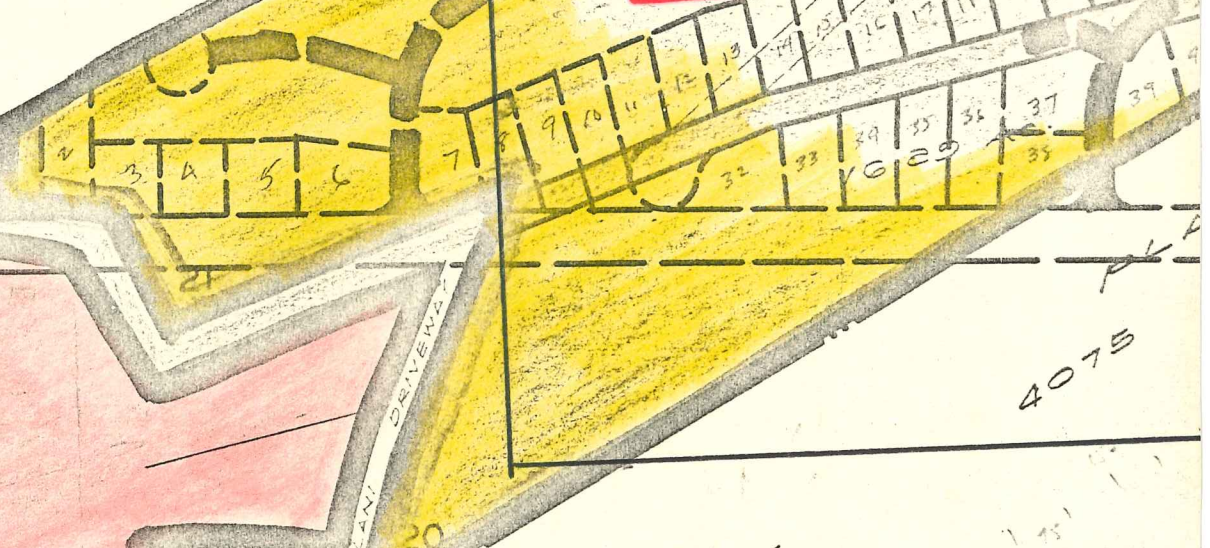
Edge of Lava Flow

GR.

47.5 AC.  
4049

OVERLAP "B"

State of Hawaii



43

8881

30

GRANT

4075

4076

1310  
7500  
27500  
2110 # lots

TRUE NORTH

1" = 3.3'

Roman Catholic Church

GR. 3990

GR. 3989

47.5 AC.  
4049

The Roman Catholic Church in the State of Hawaii of 0.25 AC.

Hilo Hongwanji Mission Cemetery 35,947 sq ft  
Island Orchids, Inc. 6.9760 AC.

27

84

23

1.68 AC.

RESERVOIR SITE & STORAGE YARD

91

State of Hawaii (21,554 sq ft) GR. 13330  
State of Hawaii (21,325 sq ft) GR. 13325

51

85

53

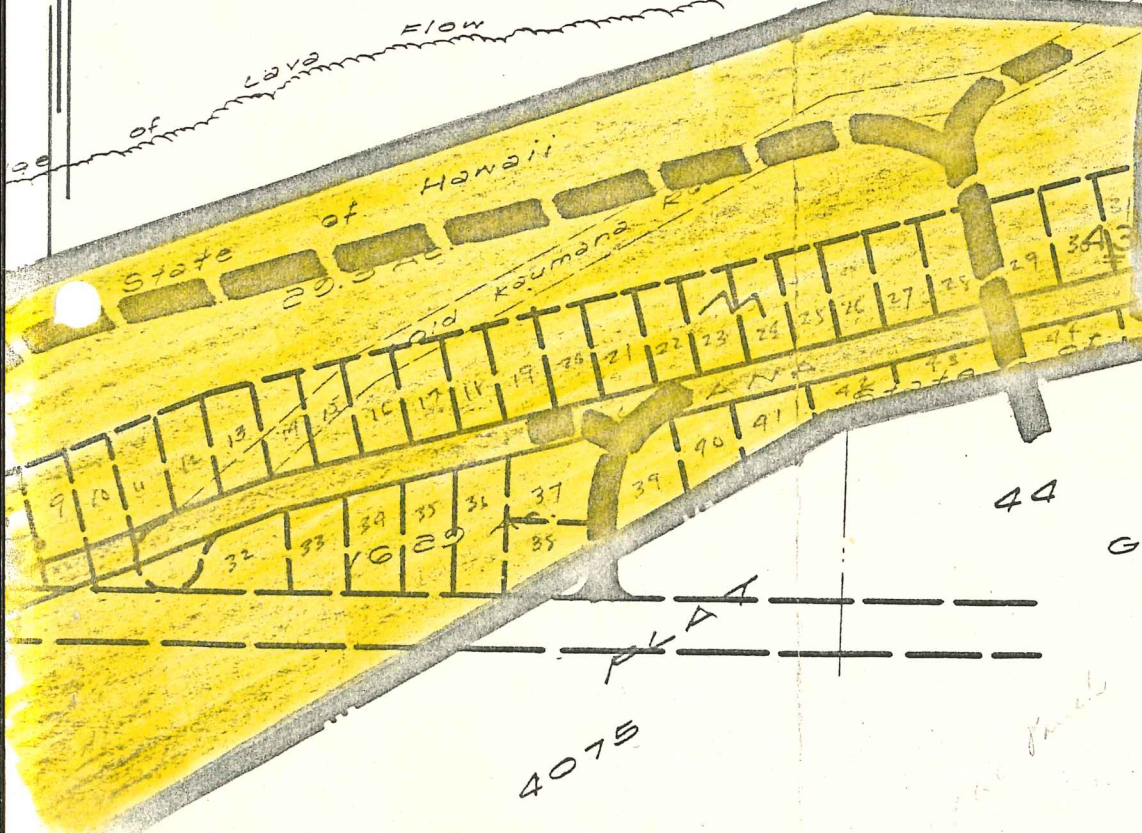
Masayoshi Sumida & wf.  
Masayo K. - T/E  
Tadao Tanoue & wf.  
Yuriko S. - T/E & A/G  
22 3.0 AC.

State of Hawaii (County of Hawaii)  
EXEC. ORD. NO. 1388  
2.086 AC.

44

36,517 sq ft  
GR. 10041

80



GRANT

4051

4075

KAUMANA

20  
in favor

"B"

13

86

87

88

89

90

91

92

93

94

95

96

97

98

99

100

PLAT  
N GR