

March 1, 1971

Mr. James M. Greenwell, President
Lanihau Corporation
3210 Koapaka Street
Honolulu, Hawaii 96819

Dear Mr. Greenwell:

The petition by Lanihau Corporation, Trustees of Palani Land Trust and L. R. Greenwell (A70-264) to amend the Land Use District Boundaries from an Agricultural District into an Urban District at Kailua, Kona, Hawaii, identifiable by Tax Map Key 7-5-09: parcels 54 and 55; and 7-5-10: parcels 10 and 7, was approved by the Land Use Commission at its meeting on February 26, 1971.

Prior to taking action on this petition, the enclosed memorandum was presented to the Commission.

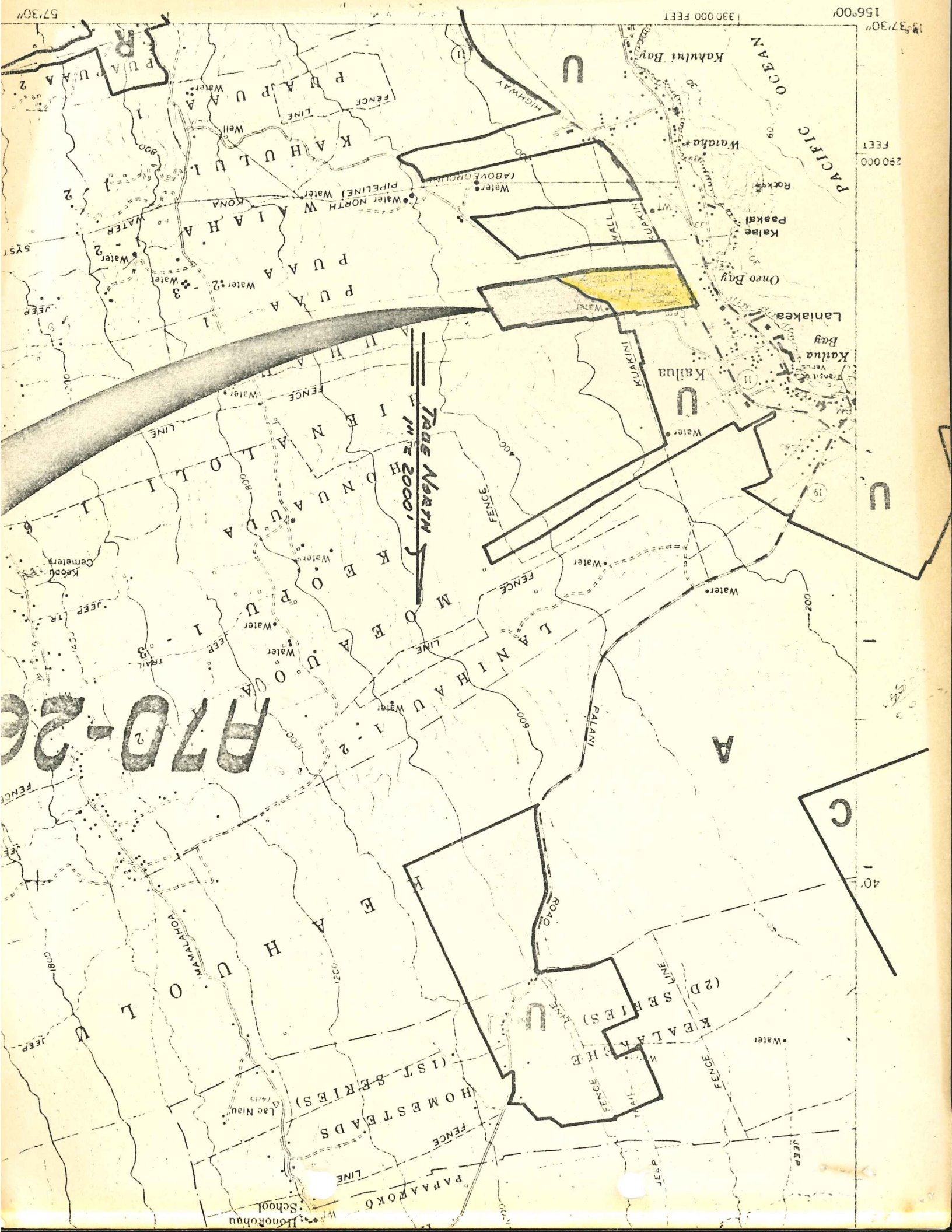
For your information, we are enclosing herewith a copy of Section 2.33, "Performance Time," of the Rules and Regulations of the Commission.

Very truly yours,

RAMON DURAN
Executive Officer

Enclosures 3

cc: Hawaii Planning Dept.
Tax Maps Recorder, Dept. of Tax.
Planning Office, DLNR
Facilities & Auxiliary Svcs. Br., DOE
Board of Land & Natural Resources
Dept. of Transportation
Planning Division, DPED
Hawaii Tax Administrator
Board of Water Supply, Hawaii
Planning Division, DAGS
Property Technical Services, Dept. of Tax.
Land Use Commission



57.30"

330 000 FEET

156.00'

290 000 FEET

290 000 FEET

290 000 FEET

290 000 FEET

290 000 FEET

290 000 FEET

290 000 FEET

290 000 FEET

290 000 FEET

290 000 FEET

290 000 FEET

290 000 FEET

290 000 FEET

290 000 FEET

290 000 FEET

290 000 FEET

290 000 FEET

290 000 FEET

P7D-26

TRADE WAREHOUSE
W 2000'

C

40'

40'

40'

40'

40'

40'

PUPUA A 2

KAHULUI

PUPUA A

KONOVAUA

MOEVA

LANIHAU

KALIUA

PUPUA A

WAMALAHU

PAPAAKOKO

Water

Water

Water

Water

Water

Water

Water

Water

Water

Water

Water

Water

Water

Water

Water

Water

Water

Water

Water

Water

Water

Water

Water

Water

Water

Water

Water

Water

Water

Water

Water

Water

Water

Water

Water

Water

Water

Water

Water

Water

Water

Water

Water

Water

Water

Water

Water

Water

Water

Water

Water

Water

Water

Water

Water

Water

Water

Water

Water

Water

Water

Water

Water

Water

Water

Water

Water

Water

Water

Water

Water

Water

Water

Water

Water

Water

Water

Water

Water

Water

Water

Water

Water

Water

Water

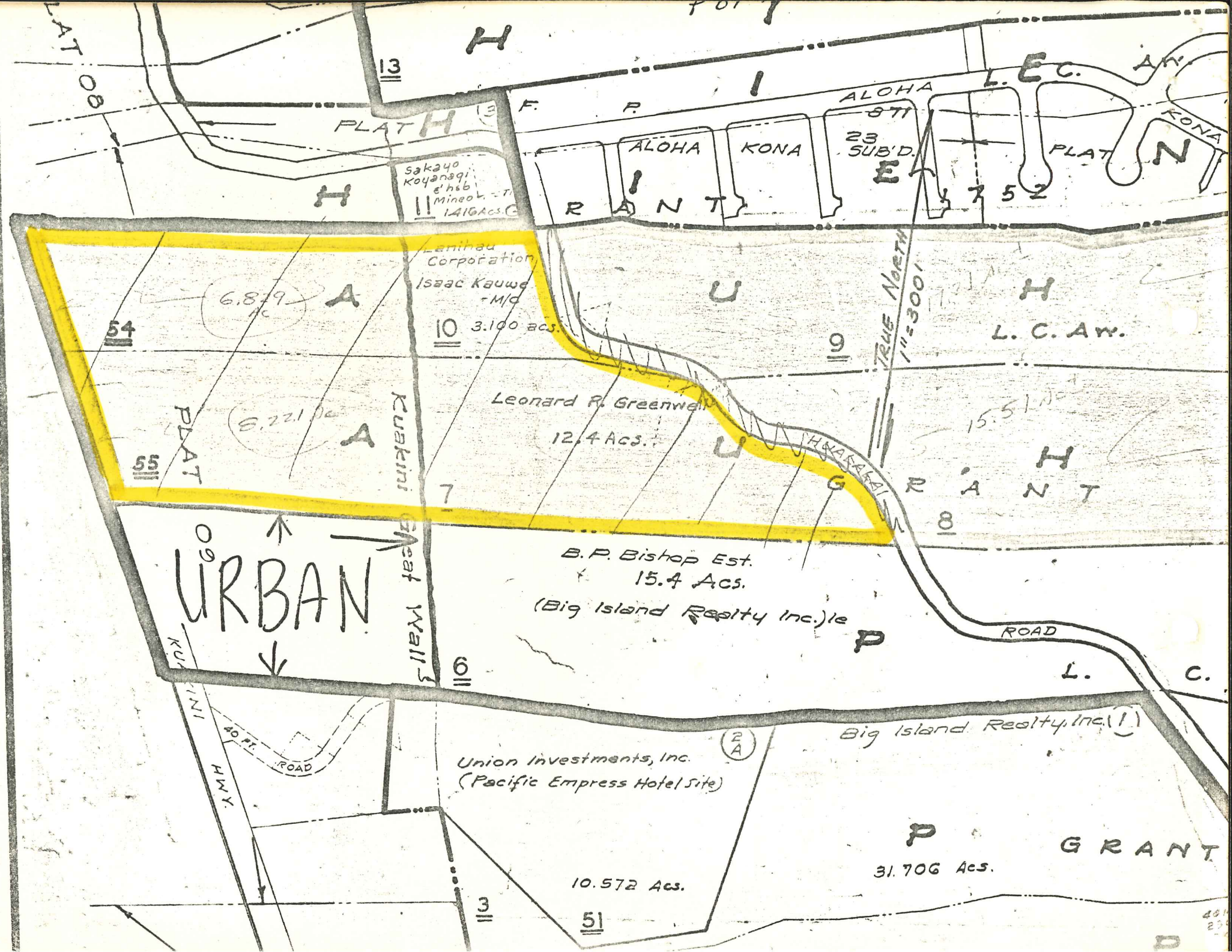
Water

Water

Water

Water

Water



PLAT 08

13

PLAT H

Sakayo Koyanagi
ehsb
Mineo
1416 Acs.

ALLOHA KONA
GRANT

ALLOHA
871
23 SUB'D.

L.C.A.W.

KONA
PLAT N

6.879 ac

A

Lanikai Corporation
Isaac Kauwe - M/D
10 3.100 acs.

Leonard R. Greenwell
12.4 Acs.

L.C.A.W.

5,221 ac

A

Kuikini

Leonard R. Greenwell
12.4 Acs.

B. P. Bishop Est.
15.4 Acs.
(Big Island Realty Inc.)

TRUE NORTH
1"=300'

15.51 ac

GRANT

URBAN

KUIKINI

Great Wall

6

Union Investments, Inc.
(Pacific Empress Hotel Site)

Big Island Realty, Inc. (1)

10.572 Acs.

GRANT
31.706 Acs.

3

51

40
23