

June 21, 1967

Mr. George Yin
Land Department
Castle and Cooke, Inc.
401 Kamakee Street
Honolulu, Hawaii

Dear Mr. Yin:

The petition by Castle and Cooke, Inc. (A67-148) to amend the land use district boundaries at Lanai City, Lanai, from an Agricultural District to an Urban District, identifiable by Tax Map Keys 4-9-02: portion of 1 and 4-9-14: portion of 1; and from an Urban District to an Agricultural District for lands identifiable by Tax Map Key 4-9-14: portion of 1; was approved by the Land Use Commission at its meeting on June 16, 1967.

Very truly yours,

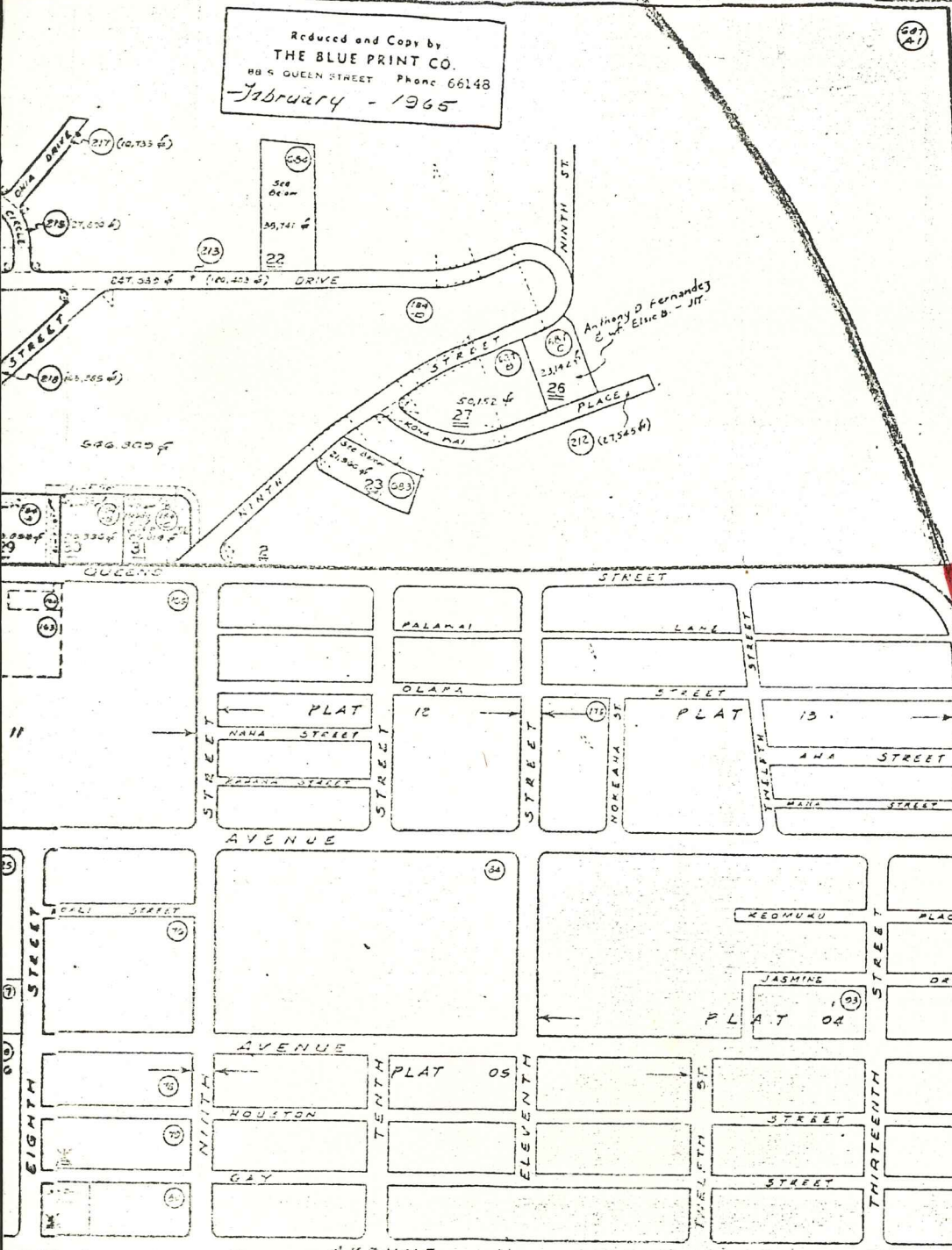
RAMON DURAN
Executive Officer

Encl.

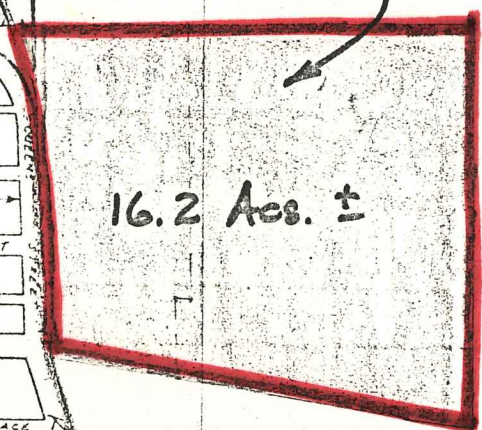
cc: Chairman Burns
Department of Taxation
Dept. of Land & Nat. Res.
Maui Planning Commission

4901

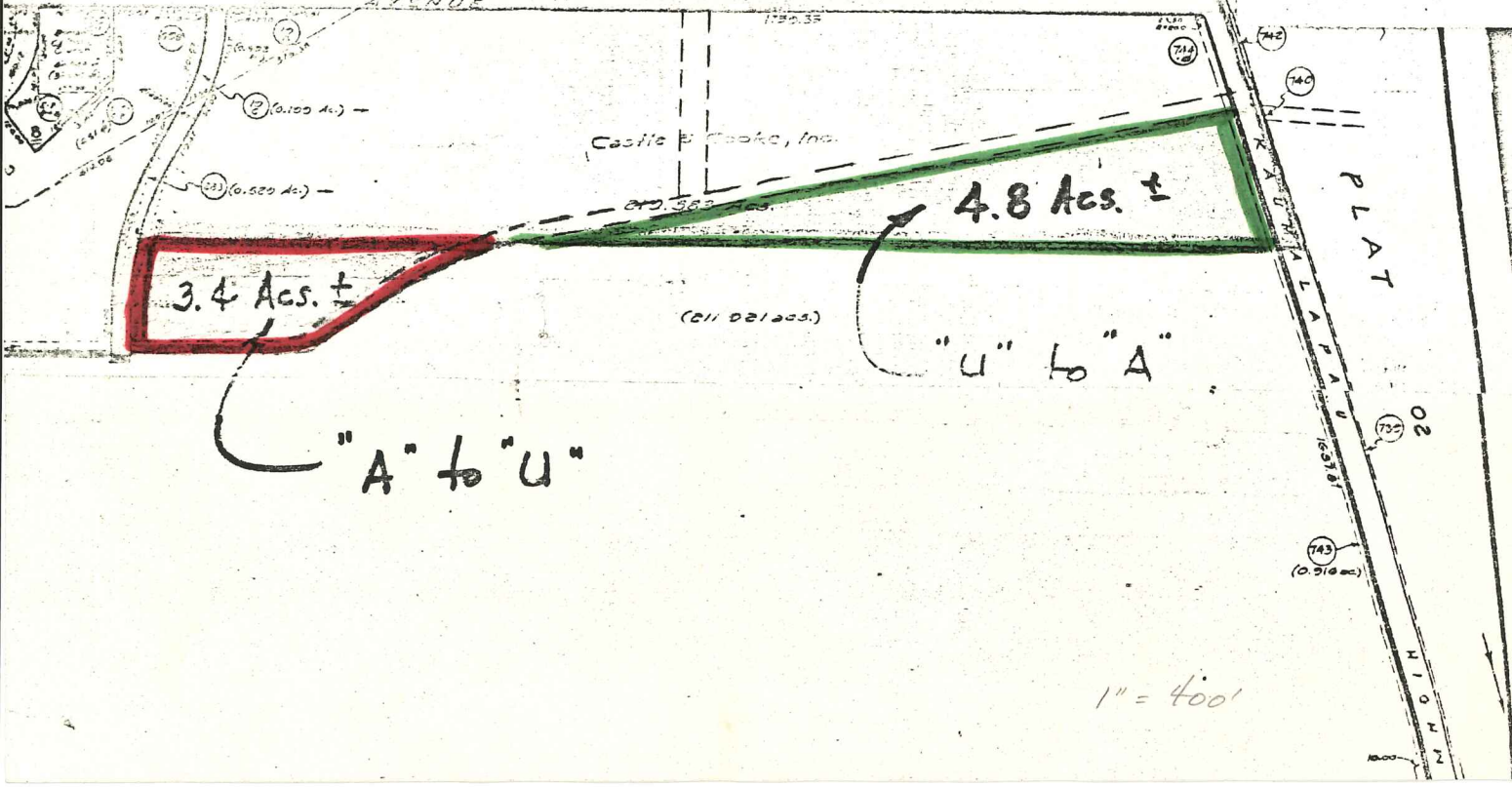
Reduced and Copy by
THE BLUE PRINT CO.
88 S QUEEN STREET Phone 66148
February - 1965



"A" to "U"



16.2 Acs. ±



3.4 Acs. ±

4.8 Acs. ±

"A" to "U"

"U" to "A"

1" = 400'