

February 21, 1967

Mr. L. S. McLane, Manager
Wailuku Sugar Company
Wailuku, Maui

Dear Mr. McLane:

The petition by Wailuku Sugar Company (A66-136) to amend the Land Use District Boundaries from an Agricultural District to an Urban District for approximately 8/10's acre of land at Wailuku, Maui, identifiable by Tax Map Key 3-4-23: portion of 5, was approved by the Land Use Commission at its meeting on February 17, 1967.

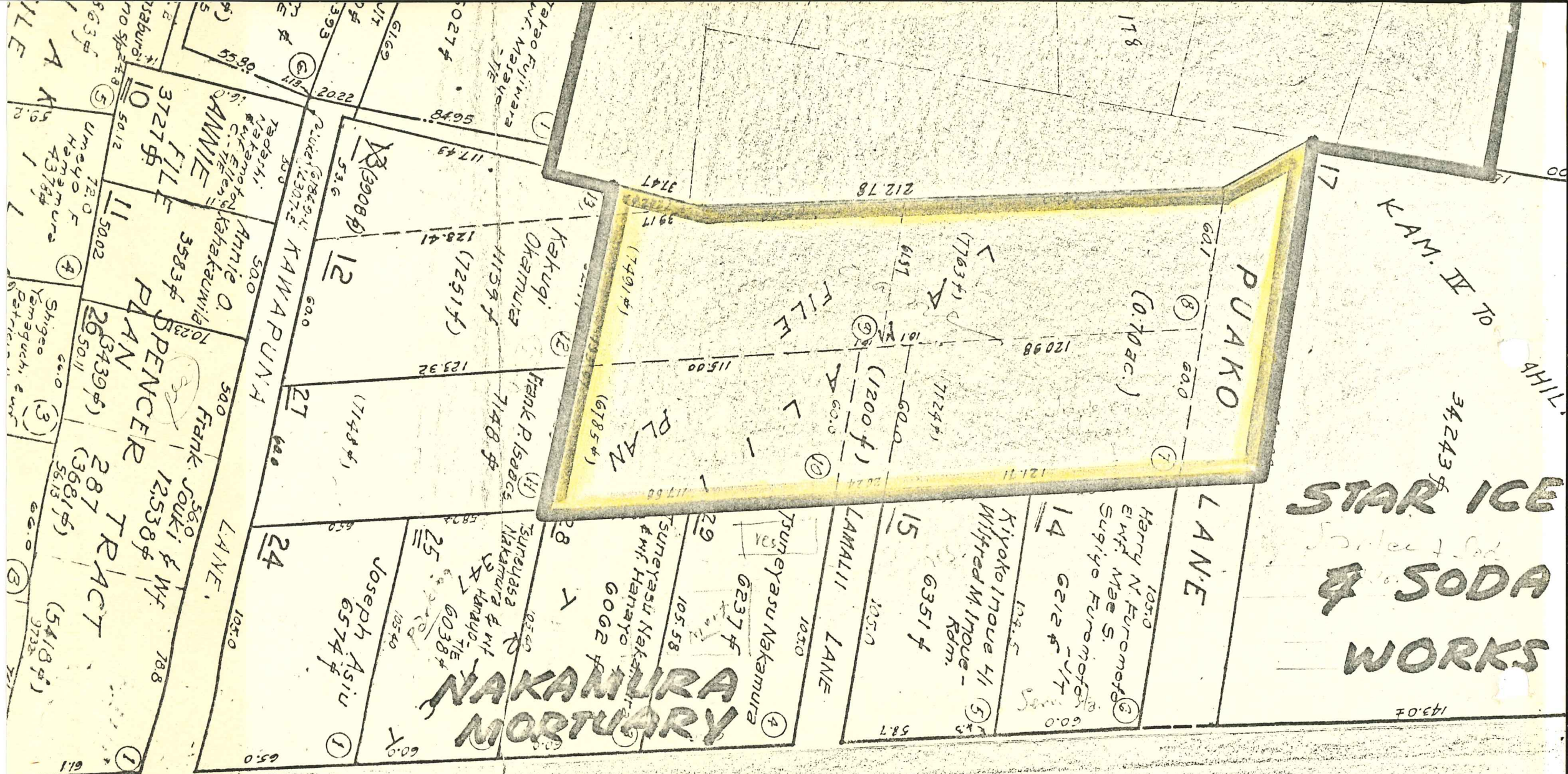
Very truly yours,

Ramon Duran

RAMON DURAN
Executive Officer

Encl.

cc: Chairman Thompson
Maui Planning & Traffic Commission
Department of Taxation
Department of Land & Nat. Res.



M A I N

TMK 3-4-23:5 (por.)

100 x 15 = 1500 s.f.

258 x 15 = 3900 s.f.