

December 5, 1972

Mr. C. W. Stevenson  
Vice President & Trust Officer  
First Hawaiian Bank  
P. O. Box 3200  
Honolulu, Hawaii 96801

Dear Mr. Stevenson:

The petition by the First Hawaiian Bank, Managing Trustee for Liliuokalani Trust, and Palani Development Company (A72-327) to amend the land use district boundaries from the Agricultural District to the Urban District was approved for approximately 52 acres, identifiable by Tax Map Key 7-4-08; portion of 12, at Keahuolu, North Kona, Hawaii, by the Land Use Commission at its meeting on November 30, 1972 (see map attached).

Prior to taking action on this petition, the enclosed memorandum was presented to the Commission.

For your information, we are enclosing herewith a copy of Section 2.33, Performance Time, of the Rules and Regulations of the Commission.

Very truly yours,

TATSUO FUJIMOTO  
Executive Officer

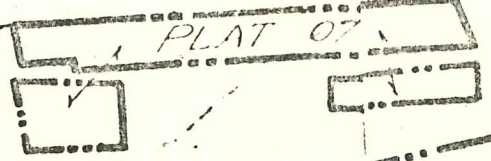
Encls.

cc: Hawaii Planning Comm.  
Dept. of Water Supply, Hawaii  
Hawaii District Office, Dept. of Tax.  
Property Technical Services, Dept. of Tax.  
Tax Maps Branch, Dept. of Tax.  
Chairman of the Board, DLNR  
Planning Office, DLNR  
Facilities & Aux. Svcs. Br., DOE  
Director, Dept. of Transp.  
Planning Branch, DAGS  
Planning Division, DPED  
Palani Development Co.  
Land Use Commission  
bcc: Larry Matsuo



H  
(Motokatsu Sato & wife Asako Y-Jit)le  
over (3.5 AC) surrounded by S wall  
(no ACS.)

554.992 ACS.



PLAT 07  
of P A K O K O

PLAT 04

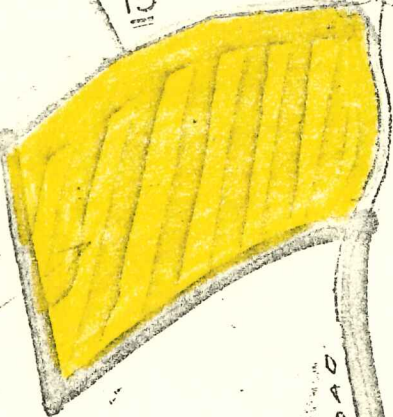
NORTH  
1" = 1000'

le. over  
688.427 AC

Hawai  
Authority  
5.510 ACS.



Liliuokalani Trust Estate  
733.201 ACS.



APANA

52 AC  
FROM TO URBAN  
AG:

TRK 7-4-00-P

KEALAKEHE

SECTION 5.

APANA ROAD

MAUNA