



STATE OF
HAWAII

DEPARTMENT OF PLANNING AND ECONOMIC DEVELOPMENT
LAND USE COMMISSION

P. O. BOX 2359 • HONOLULU, HAWAII 96804

JOHN A. BURNS
Governor

SHELLEY M. MARK
Director Department
of Planning and Economic
Development

WILBERT H. S. CHOI
Commission Chairman

Goro Inaba
Vice Chairman

RAMON DURAN, AIP, ASLA
Executive Officer

COMMISSION MEMBERS
Alexander J. Napier
Shelley M. Mark
Sunao Kido
Eddie Tangen
Leslie E. L. Wung
Tanji Yamamura
Stanley S. Sakahashi

August 3, 1970

TO WHOM IT MAY CONCERN:

At its meeting on August 1, 1970, the Land Use Commission voted to approve a petition (A70-249), initiated upon its own motion, to amend the land use district boundaries from the Conservation District to the Agricultural District for approximately 45 acres situated at Waimea Valley, Waimea, Kauai, identifiable by the following Tax Map Keys and property owners:

<u>Tax Map Key</u>	<u>Property Owner</u>	<u>Size</u>
1-5-02: 01	Louis Rego & Eddie Taniguchi	2.30 acres
02	Oliver R. Franklin & Healani Ahuna Ting	2.36 acres
03	Sarah Naumu	7,196 sq. ft.
04	Nely Hilo Estate & Antone Vidinha, Jr.	0.30 acre
05	Margaret Coleman, et al	0.30 acre
06	E. Wright Estate, et al	0.247 acre
07	Oliver R. Franklin	24,090 sq. ft.
09	Margaret Coleman, et al	0.92 acre
10	Kiichi Odo	8.198 acres
11	Kiichi Odo & Antone Vidinha, Jr.	0.49 acre
12	Alice Robinson Estate, et al	24,000 sq. ft.
13	Hoon Ting, et al	0.31 acre
14	Kiichi Odo & Antone Vidinha, Jr.	0.49 acre
15	State of Hawaii	0.06 acre
16	Kiichi Odo	1.02 acres
17	Alice Robinson Estate, et al	2.19 acres
18	Mitsugi Yokotake	245,884 sq. ft.

TO WHOM IT MAY CONCERN
August 3, 1970
Page 2

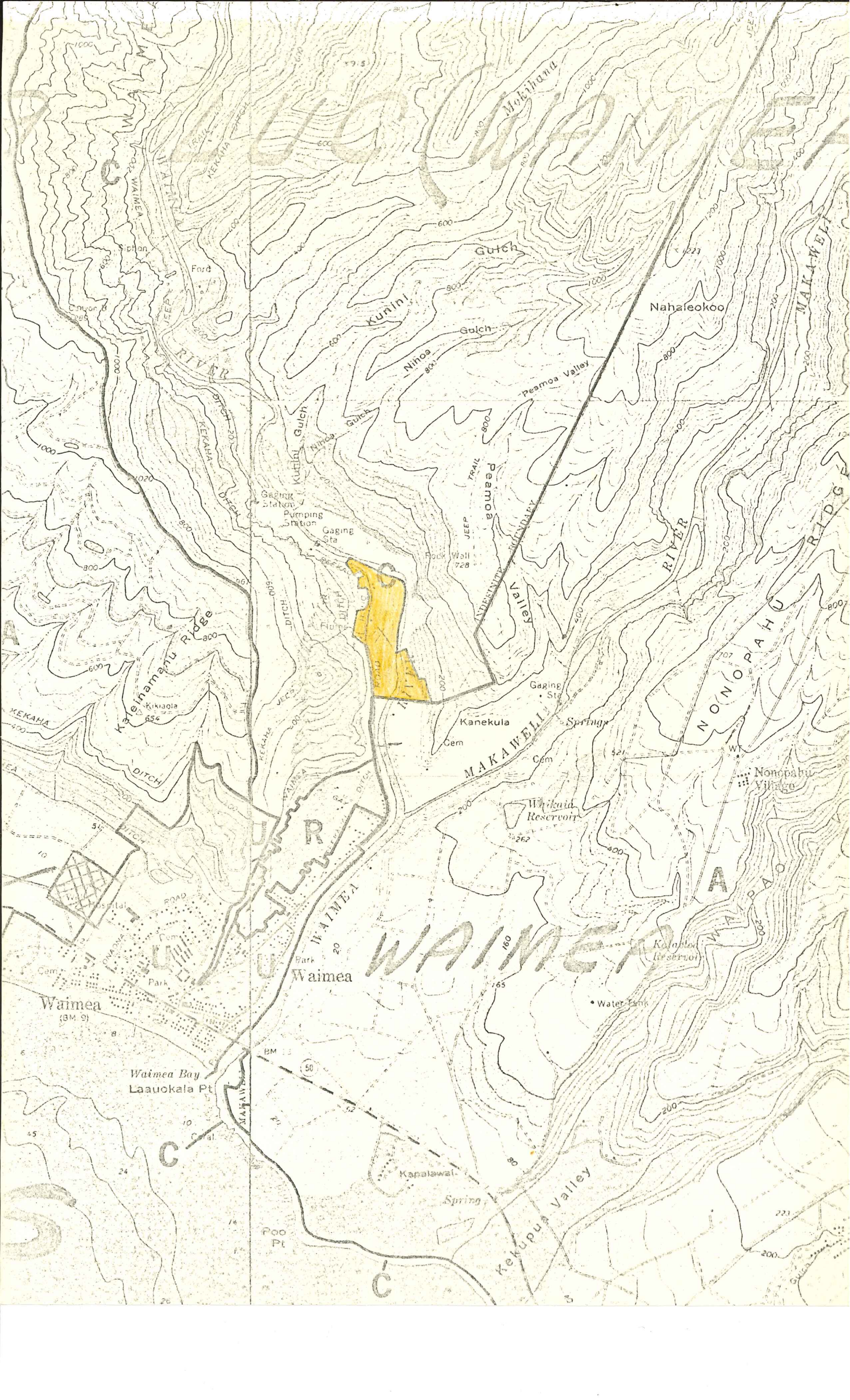
<u>Tax Map Key</u>	<u>Property Owner</u>	<u>Size</u>
1-5-02: 19	State of Hawaii	9,185 sq. ft.
20	Carl W. Dusenberry, Jr.	10,987 sq. ft.
21	Melvin Makuaole	10,500 sq. ft.
22	Cecilia P. Kamai, et al	5,380 sq. ft.
23	Tamayo M. Yokotake, et al	0.35 acre
24	Cecilia P. Kamai, et al & Mitsugi Yokotake & Kiichi Odo	3.12 acres
26	Samuel Alo, Sr.	0.31 acre
27	Paul Kamai, et al & George J. Crowell	0.62 acre
28	Mitsugi Yokotake	113,750 sq. ft.
30	Mitsugi Yokotake	46,700 sq. ft.
31	Clara Akuna	1,933 sq. ft.
32	Almira Dusenberry	5,767 sq. ft.
33	Alice Robinson Estate, et al	0.29 acre
34	Mitsugi Yokotake	31,443 sq. ft.
35	Alice Robinson Estate, et al	0.80 acre
36	Solomon Kapepee, et al	12,448 sq. ft.
37	Edward Kapahu, et al	7,623 sq. ft.
38	Alice Robinson Estate, et al	0.5 acre
39	Hoon Ting, et al	0.247 acre
40	E. Wright Estate, et al	0.31 acre
41	Kim Kapahu	7,625 sq. ft.
42	Yutaka Yokotake	32,420 sq. ft.
44	Eddie Taniguchi	15,772 sq. ft.
45	Yutaka Yokotake	3,756 sq. ft.

Very truly yours,



RAMON DURAN
Executive Officer

Enclosure - Map



WAIMEA

WAIMEA RIVER

Nahaleokoo

Kunini

Peamoa Valley

Kelehamanu Ridge

MAKAWELI RIVER

NONOPAHU RIDGE

Waimea (BM 9)

Waimea Bay
Laauckala Pt

Waimea

Kekuapa Valley

Kapatawal

Nonopahu Village

Water Park

Waikaula Reservoir

Kapala Reservoir

Kanekula Cem

Cem

Gaging Sta

Springs

Rock Wall 728

Gaging Station
Pumping Station
Gaging Sta

Kutabul Gulch

Nihoa Gulch

Gulch

Gulch

Peamoa Valley
TRAIL
JEEP

Spring

Poo Pt

Gulch