



STATE OF
HAWAII

DEPARTMENT OF PLANNING AND ECONOMIC DEVELOPMENT
LAND USE COMMISSION

P. O. BOX 2359 • HONOLULU, HAWAII 96804

JOHN A. BURNS
Governor

SHELLEY M. MARK
Director Department
of Planning and Economic
Development

WILBERT H. S. CHOI
Commission Chairman

Goro Inaba
Vice Chairman

RAMON DURAN, AIP, ASLA
Executive Officer

COMMISSION MEMBERS
Alexander J. Napier
Shelley M. Mark
Sunao Kido
Eddie Tangen
Leslie E. L. Wung
Tanji Yamamura
Stanley S. Sakahashi

August 3, 1970

TO WHOM IT MAY CONCERN:

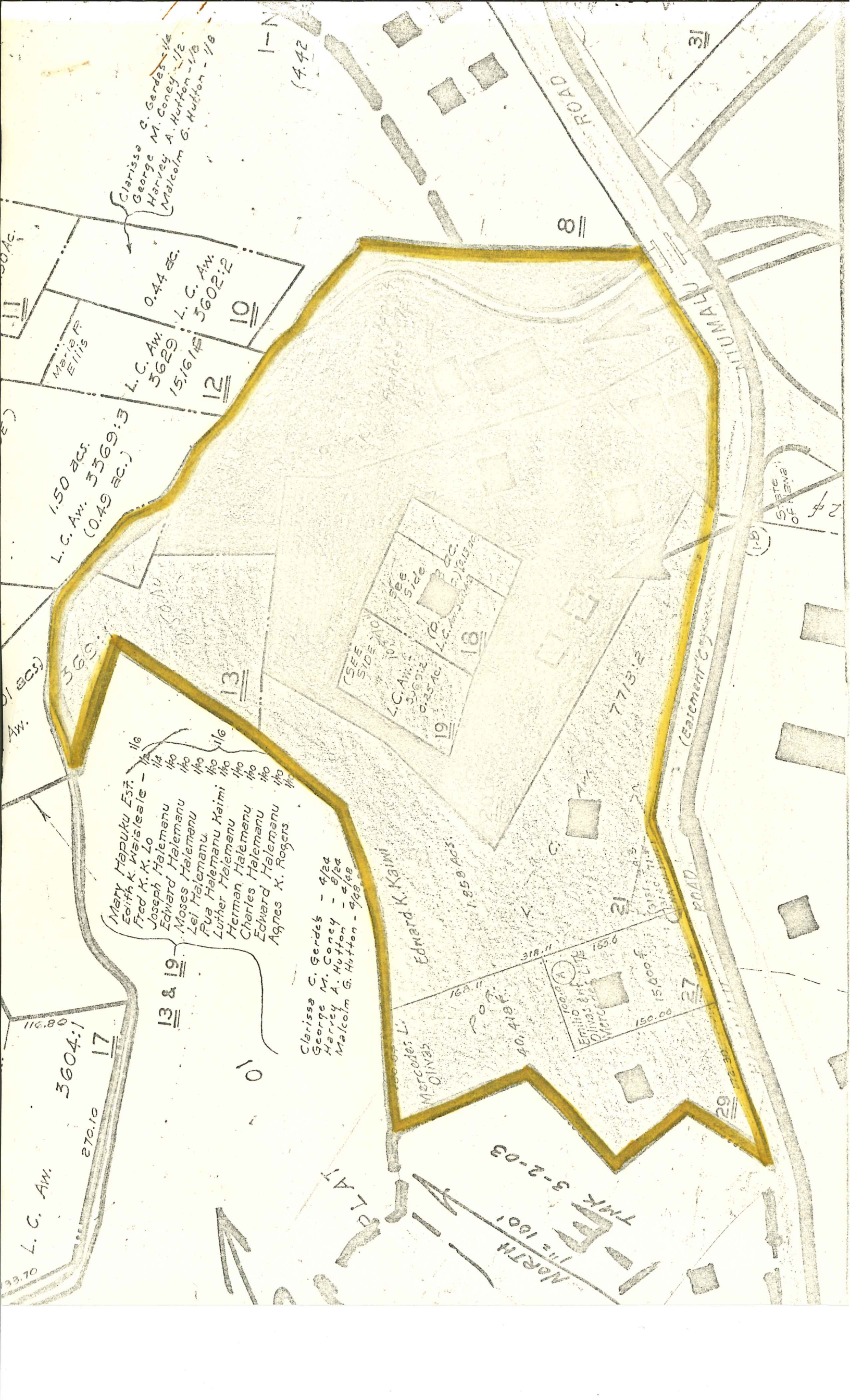
At its meeting on August 1, 1970, the Land Use Commission voted to approve a petition (A70-243), initiated upon its own motion, to amend the land use district boundaries from the Agricultural District to the Urban District for approximately 12 acres situated at Nawiliwili, Kauai, identifiable by the following Tax Map Keys and property owners:

<u>Tax Map Key</u>	<u>Property Owner</u>	<u>Size</u>
3-2-03: 09	Mizutani	1.82 acres
28	"	10,474 sq. ft.
13	Hapuka Estate, et al	0.50 acre
19	" " " "	0.25 acre
18	Kim, Goo, et al	0.58 acre
20	Mary Hapuka Estate (Chow)	1.98 acres
21	Kaiwi	1.86 acres
27	Olivas	15,000 sq. ft.
29	"	40,418 sq. ft.

Very truly yours,

RAMON DURAN
Executive Officer

Enclosure - Map



Clarissa C. Gerdes - 1/4
George M. Coney - 1/2
Harvey A. Hutton - 1/2
Malcolm G. Hutton - 1/8

L.C. Ave. 3629
15.1614
0.44 ac.
L.C. Ave. 3602:2
10

1.50 ac.
L.C. Ave. 3369:3
(0.49 ac.)
12

(SEE SIDE 20)
L.C. Ave. 3691:2
0.25 ac.
19
See Side 20
L.C. Ave. 3691:2
0.25 ac.
18

Mary Hapuku Est.
Edith K. Waislesle - 1/4
Fred K. K. Lo 1/4
Joseph Halemanu 1/4
Edward Halemanu 1/4
Moses Halemanu 1/4
Lei Halemanu 1/4
Rua Halemanu Kaimi 1/4
Luther Halemanu 1/4
Herman Halemanu 1/4
Charles Halemanu 1/4
Edward Halemanu 1/4
Agnes X. Rogers 1/4

Clarissa C. Gerdes - 9/24
George M. Coney - 9/24
Harvey A. Hutton - 9/24
Malcolm G. Hutton - 9/24

Edward K. Kaimi
1.850 acs.

Emilio and Lita
Olivias and Lita
100.00
150.00
150.00
150.00
318.11
1550
21

L.C. Ave. 3604:1
270.10
17

North 112 1601
T.M.K. 3-2-03

31

27

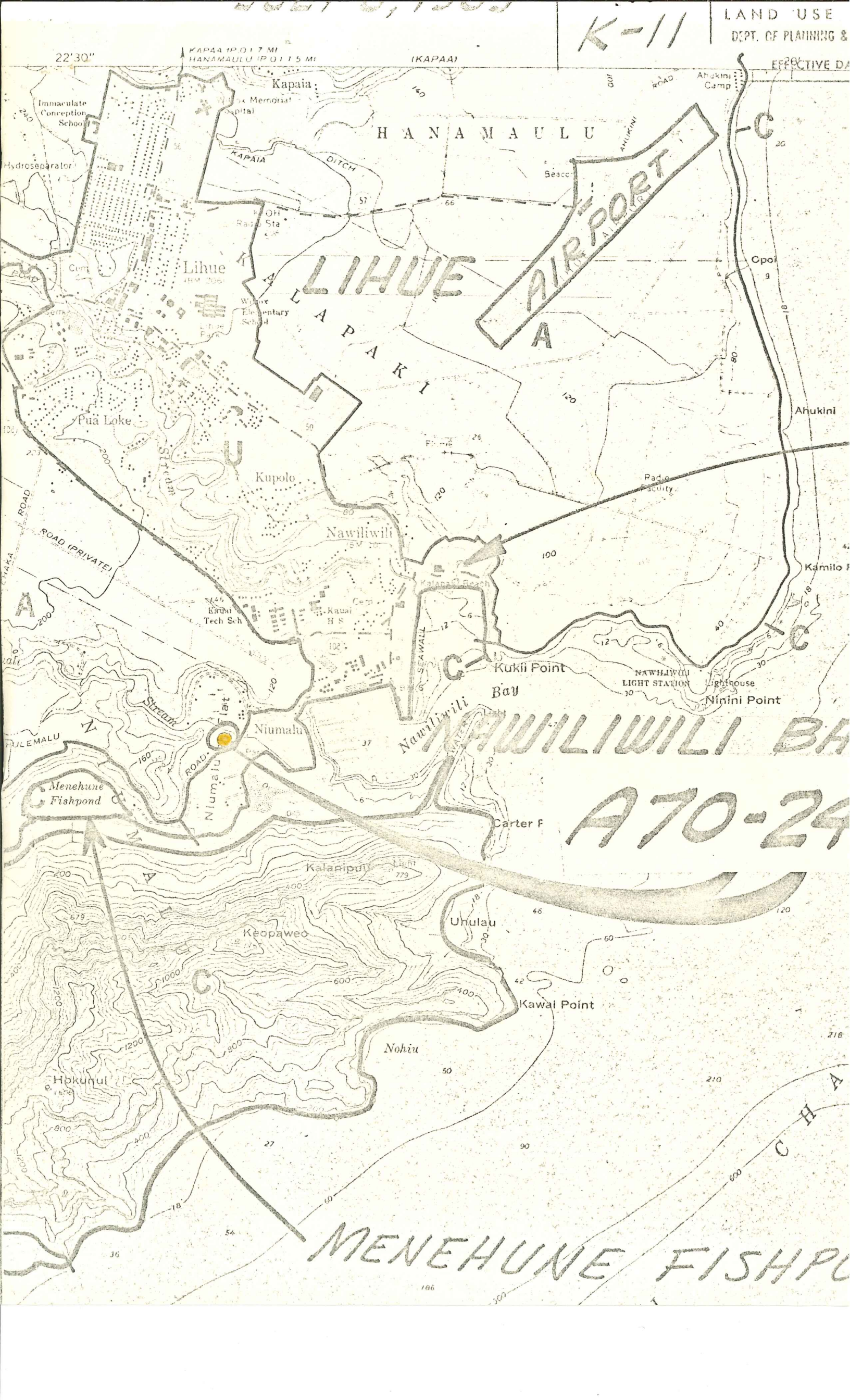
29

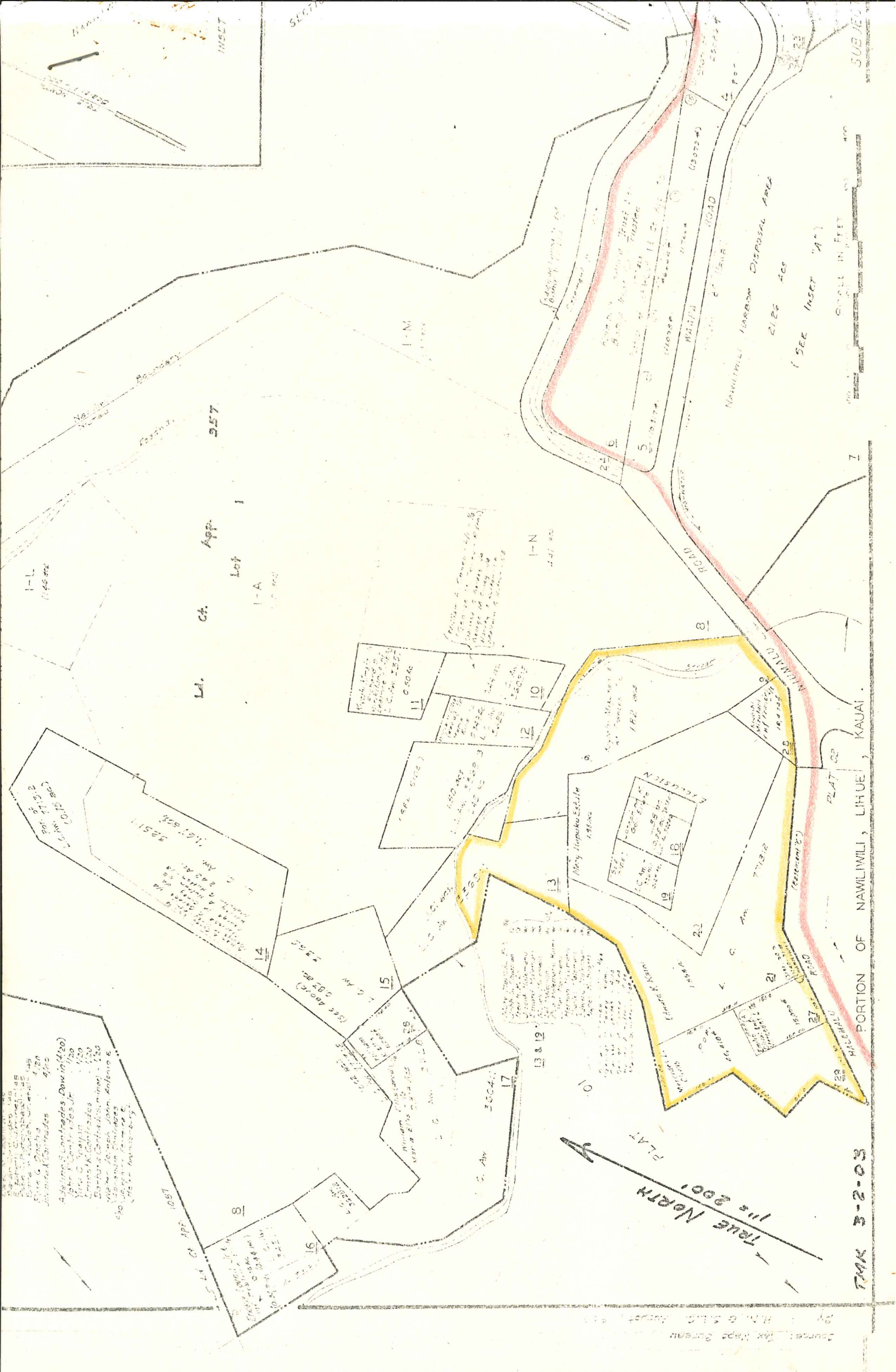
(18)

STATE OF NEW YORK

K-11

LAND USE
DEPT. OF PLANNING &
EFFECTIVE DATE





TMK 3-2-03

PORTION OF NAWILIWILI, LIHUE, KAUAI

PLAT 22

SCALE IN FEET

SUBJECT

Source: Tax Maps Bureau
By: H.N. G.S.L. August 1957