

August 20, 1968

Mrs. Mariana O. Ornelias
P. O. Box 702
Kapaa, Kauai 96746

Dear Mrs. Ornelias:

Your petition (267-156) to amend the Land Use District Boundaries from an Agricultural to an Urban District at Kapaa Homesteads, Kapaa, Kauai, identifiable by Tax Map Key 4-6-08: portions of parcels 5 & 6, was approved by the Land Use Commission at its meeting on August 16, 1968.

Very truly yours,

RAMON DURAN
Executive Officer

js

Enclosure

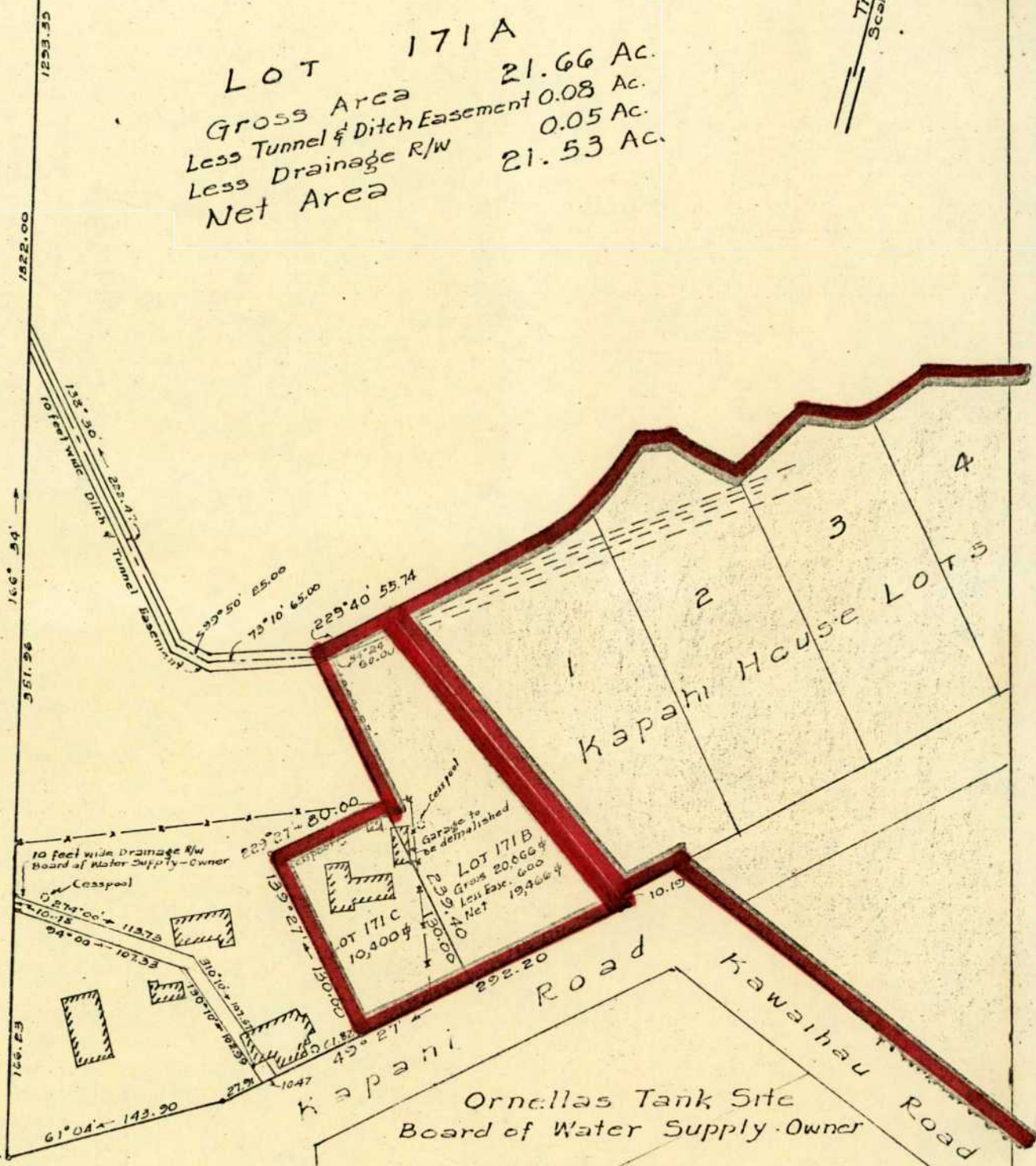
cc Kauai Planning & Traffic Commission
Department of Taxation
Department of Land & Natural Resources

A 68-181 ORNELLAS

True North
Scale: 1" = 100'

LOT 171A
 Gross Area 21.66 Ac.
 Less Tunnel & Ditch Easement 0.08 Ac.
 Less Drainage R/W 0.05 Ac.
 Net Area 21.53 Ac.

LOT 170



N 14009.90
 E. 2512.20
 "NONOU" A



This work was prepared by me
 or under my supervision.
 Masami Murakami
 Registered Certificate No. 938
 Kapahi, Hawaii
 February, 1968

SUBDIVISION OF
 LOT 171
 INTO
 LOTS 171A, 171B, AND 171C
 KAPAA HOMESTEADS
 KAPAA, (PUNA), KAUAI, HAWAII
 Scale: 1 in. = 100 ft. Tax Map Key 4-G-08