

December 18, 1967

Mrs. Matsuko Taguma
P. O. Box 167
Kalaheo, Kauai 96741

Dear Mrs. Taguma:

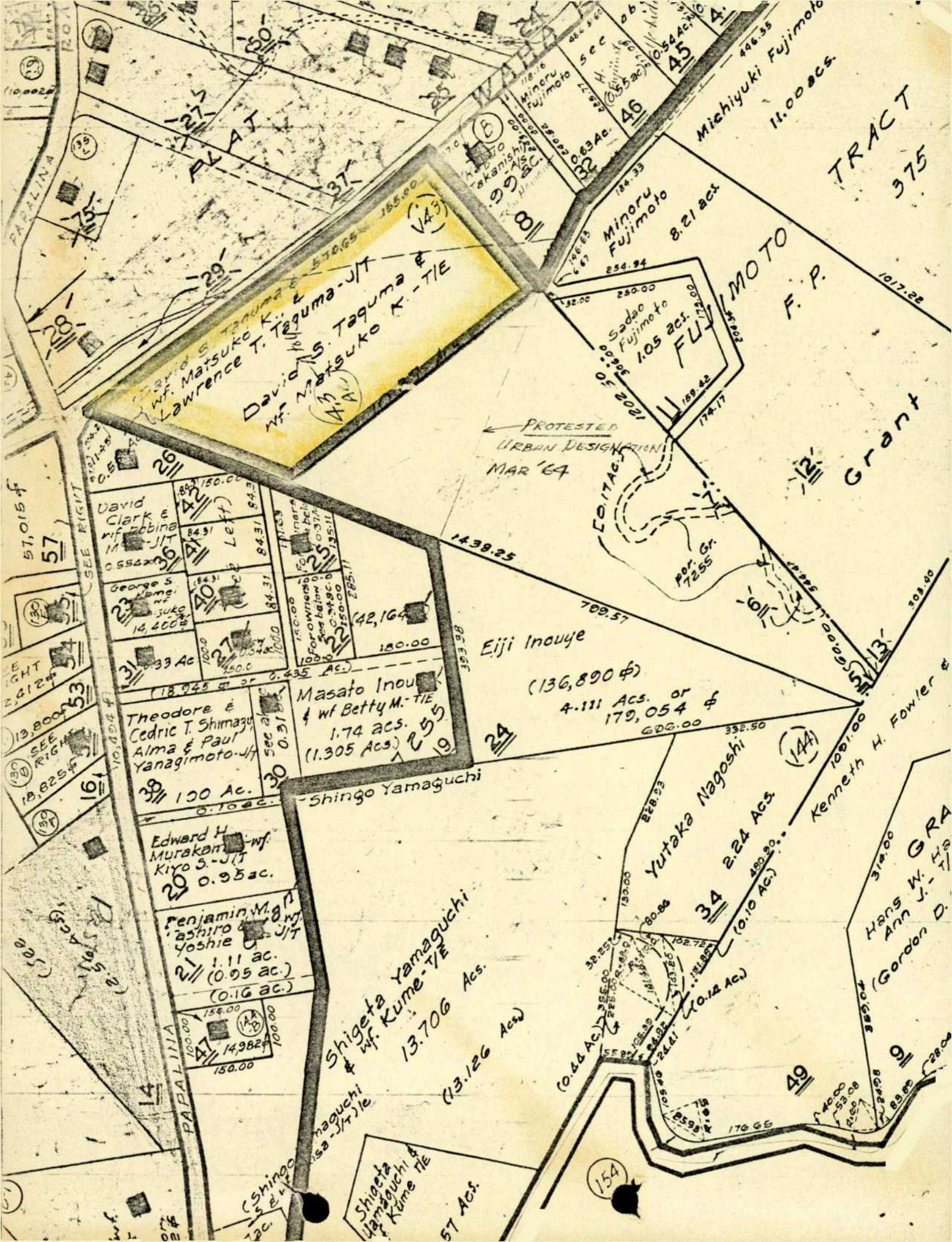
Your petition (A67-156) to amend the Land Use District Boundaries from an Agricultural District into an Urban District at Kalaheo Homesteads, Koloa, Kauai, identifiable by Tax Map Key 2-3-08; portion of 5, was approved by the Land Use Commission at its meeting on December 15, 1967.

Very truly yours,

RAMON DURAN
Executive Officer

Encl.

cc: Kauai Planning Commission
Department of Taxation
Dept. of Land & Natural Resources



PAPALINA

29
27
37

David S. Taguma & Lawrence T. Taguma - J/T
Wf. Matsuko K. - TIE

57, 015 f
57
SEE RIGHT

David Clark & Robin M. - J/T
0.552 acs

George S. - J/T
14, 400 f

Theodore & Cedric T. Shimazu
Alma & Paul Yanagimoto - J/T
100 Ac.
0.10 ac.

Edward H. Murakami - J/T
Kiyoko S. - J/T
0.95 ac.

Benjamin M. & Yashiro & Yoshie - J/T
1.11 ac.
(0.95 ac.)
(0.16 ac.)

Shigeta Yamaguchi & Wf. Kume - TIE
13.706 Ac.
(13.126 Ac.)

570.65
155.00
143
Wf. Matsuko K. - TIE

42, 164
180.00
Eiji Inouye
(136,890 f)
4.111 Ac. or
179,054 f
600.00

Masato Inouye & Wf. Betty M. - TIE
1.74 acs.
(1.305 Ac.)

Shigeta Yamaguchi & Wf. Kume - TIE
13.706 Ac.
(13.126 Ac.)

Minoru Fujimoto 8.21 acs
Sadao Fujimoto 1.05 acs
FUJIMOTO F.P.

PROTESTED URBAN DESIGNATION MAR '64
CONTACT
Por. Gr. 7255

Yutaka Nagoshi 2.24 Ac.
(0.10 Ac.)

Shigeta Yamaguchi & Wf. Kume - TIE
57 Ac.

Michiyuki Fujimoto 11.00 acs
Grant
K. Grant
Kenneth H. Fowler & Hang W. GRA
(Gordon D.)

TRACT 375

1017.22

1017.22

303.00

1001.00

312.00

28.00

170.65

140.00
53.08
150.00

154