

September 12, 1967

Department of Transportation
U. S. Coast Guard
1347 Kapiolani Boulevard
Honolulu, Hawaii 96814

Attention: Comptroller

Gentlemen:

The petition by the Land Use Commission (A67-152) to amend the land use district boundaries from an Urban District into the Conservation District for approximately 29 acres, and approximately 1/3 acre from the Conservation District into the Urban District involving lands encompassing the outer slopes of Diamond Head, affecting your property, was approved by the Land Use Commission at its meeting on September 8, 1967. For your information, we are enclosing a map showing the areas where these changes were effected.

Very truly yours,

RAMON DURAN
Executive Officer

Encl.

cc: Dept. of Taxation
Dept. of Land & Natural Res.
Planning Dept., C&C of Honolulu

Identical letter sent to the following landowners whose property
was affected by the boundary change:

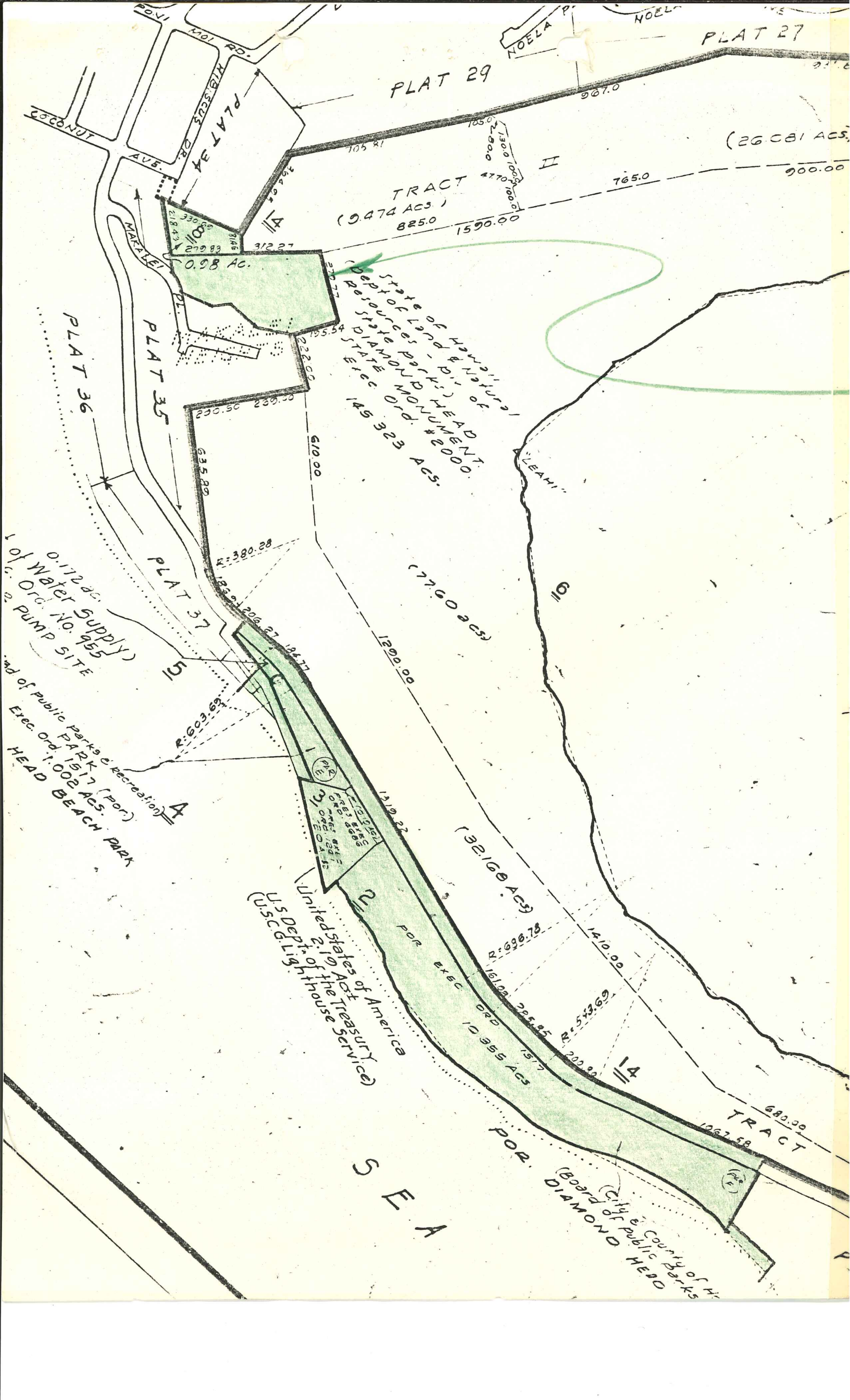
x Col. W. C. Meyer
Deputy Adjutant General
Department of Defense
Fort Ruger, Oahu, Hawaii

Commanding General
U. S. Army Hawaii
APO 96577

Attention: HCEN-R

x Planning Director
Planning Department
City & County of Honolulu
629 Pohukaina Street
Honolulu, Hawaii

7x Mr. Jim P. Ferry, Director
Department of Land & Natural Resources
465 South King Street
Honolulu, Hawaii



PLAT 27

PLAT 29

PLAT 34

PLAT 35

PLAT 36

PLAT 37

TRACT
(9.474 ACS)
825.0
1590.00

(26 CBI ACS)

0.98 AC.

State of Hawaii
Dept of Land & Natural Resources
State Parks (D.R.) HEAD OF
DIAMOND MONUMENT
STATE ORD. #2000
145 323 ACS.

(77.60 ACS)

(32.168 ACS)

(10.355 ACS)

TRACT

SEA

City & County of Hawaii
Board of Public Parks
DIAMOND HEAD

0.172 ACS
of Water Supply
Ord. No. 955
PUMP SITE

Head of Public Parks & Recreation
PARK 1917 (POR)
Exec. Ord. 1,002 ACS.
HEAD BEACH PARK

United States of America
(U.S. Dept. of the Treasury)
U.S. Geological & Geographical Service

PROV. EXEC. ORD. 1917
AREA 1.8417
10,000 SQ. FT.

