

August 30, 1966

Mr. Edward Stanwood
Eleele
Kauai, Hawaii 96705

Dear Mr. Stanwood:

Please be advised that on August 26, 1966, the Land Use Commission rendered a decision on the petition by William Fernandes and Margaret Arcia (A66-121) to amend the land use district boundaries in the Wailua Homestead area, Kauai as follows:

Approved for change from Agricultural District to Rural District

Tax Map Key:	4-2-02: 25	-	22.78	acres
	4-2-02: 29	-	31.85	"
	4-2-02: 31	-	<u>.38</u>	"
	Total		55.01	acres

Denied for change from Urban District to Rural District

Tax Map Key: 4-2-02: 25 - 5 acres

Prior to taking action on your petition, the enclosed memorandum was presented to the Commission.

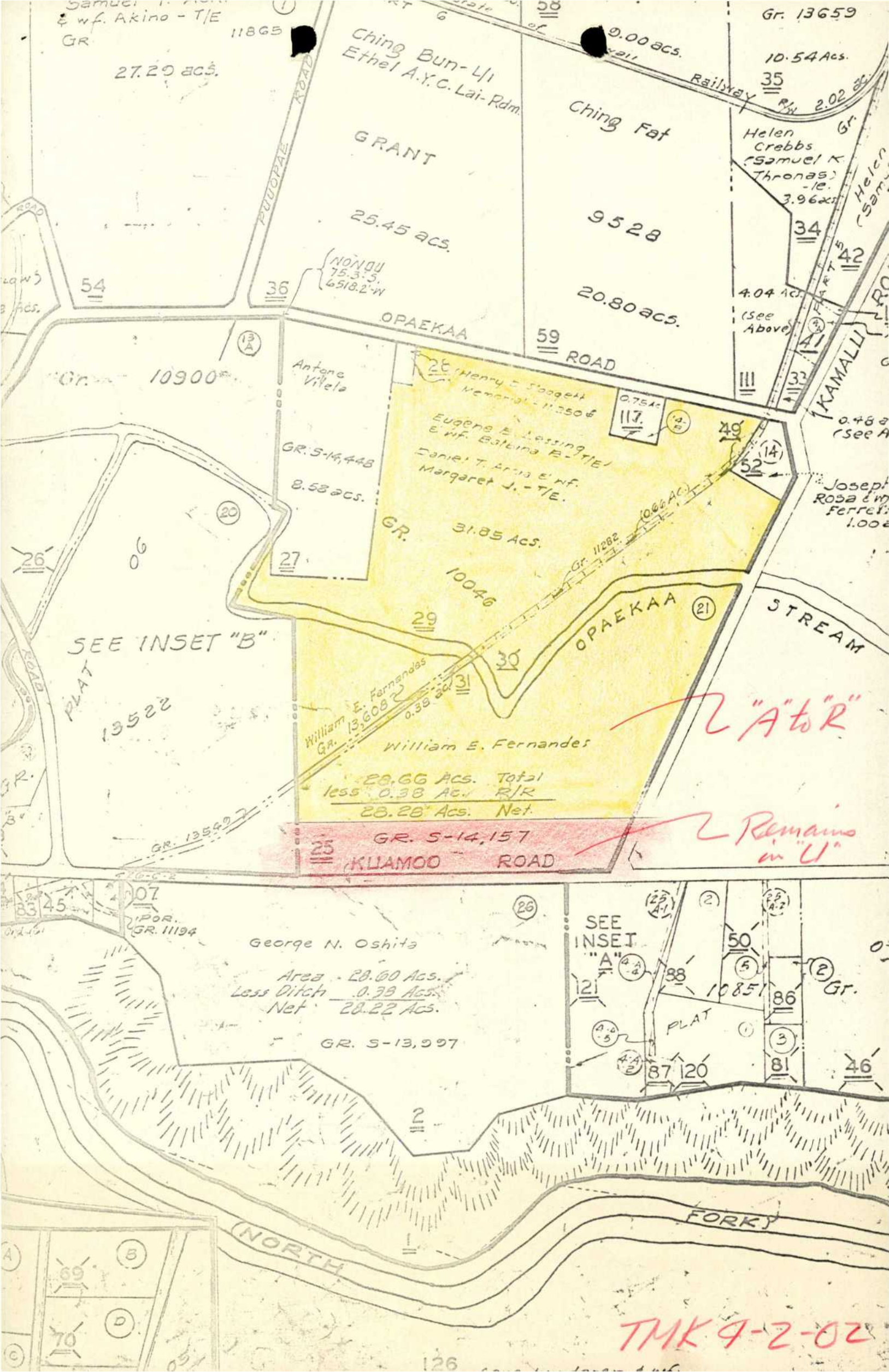
Should you desire any further information, or have any questions, please feel free to contact us.

Very truly yours,

GEORGE S. MORIGUCHI
Executive Officer

Encls.

cc: Chairman Thompson
Department of Taxation
Department of Land & Nat. Res.
Kauai Planning & Traffic Commission



Samuel & w.f. Akino - T/E
GR 11865

27.29 acs.

Ching Bun-Li
Ethel A.Y.C. Lai-Rdm.

GRANT

25.45 acs.

Ching Fat

9528

20.80 acs.

Gr. 13659

10.54 acs.

Helen
Crebbs
(Samuel K
Thronas)
-le.
3.96 acs.

4.04 ac.
(see
Above)

PUUOPEAE ROAD

0.00 acs.

Railway

Helen
(Samuel
Thronas)

54

36

NONOU
75.3'-S
6518.2'-W

59 ROAD

OPAEEKAA

Gr. 10900

Antone
Vilela

Henry E. Soogett
Memorial - 11,250 \$

0.75 ac
117

GR. S-14,448

Eugene E. Lessing
& w.f. Barbara E. - T/E
Daniel T. Arria & w.f.
Margaret J. - T/E.

8.58 acs.

GR. 31.85 Ac.

Gr. 11282
10.66 ac.

STREAM

SEE INSET "B"

PLAT

13522

William E. Fernandes
Gr. 13,608
0.38 ac.

William E. Fernandes

28.66 Ac. Total
less 0.38 Ac. R/R
28.28 Ac. Net.

"A to R"

Remains in "U"

25 GR. S-14,157
KIAMOOD ROAD

George N. Oshita
Area - 28.00 Ac.
Less Ditch - 0.38 Ac.
Net - 28.22 Ac.
GR. S-13,997

SEE INSET "A"

PLAT

10851

87 120

86

81

46

(NORTH)

FORK

TMK 9-2-02