

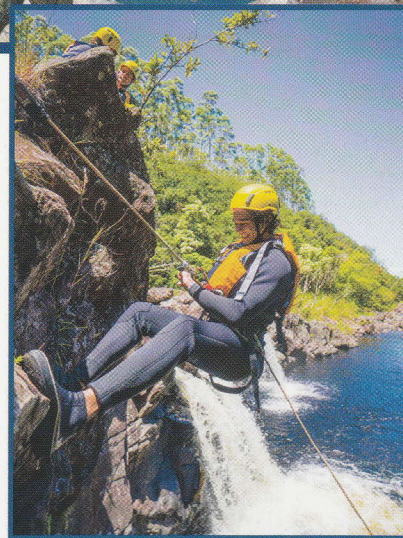
HAWAII ADVENTURE & ROMANCE

Winter 2017 - Spring 2018



Visit The Umauma Experience where you can zipline over waterfalls or rappel down them in Umauma's All-New Rappel and River Experience. See Page 41

LAVA FLOW UPDATES
WHALE WATCHING
ISLAND GUIDE
WATERFALLS
DISCOUNTS
ACTIVITIES
LIVE MUSIC
SHOPPING
BEACHES
MAPS



Serving Hawaii for 10 Years
www.hawaiiadventuresmag.com

Historical Hamakua

Lauapahoehoe & Papaaloa



There is something for everyone in the heart of the Hamakua Coast.

It's all in the name Hamakua, Hawaiian for "Breath of God," green, lush and blessed with abundance, the Big Island's very own Garden of Eden. This often overlooked North East corner of the Big Island, holds a unique distinction as one of the last coastal agricultural tracts in the State. The Hamakua Heritage Corridor, is a beautiful drive stretching the coast from Hilo to Waipio Valley. This coast was once the jewel of the Plantation Era and "king cane," but has now evolved away from mass produced monoculture and given way to dozens of thriving small scale farming operations. Smack in the heart of the Hamakua lay the rural communities of Laupahoehoe and Papaaloa. Once thriving mill towns, they now cater to those seeking a mellow country life, with dozens of vacation rental havens for tourists escaping the bustle of the more crowded Hawaiian destinations. Laupahoehoe (leaf of lava), was established on an ancient lava flow that formed a small peninsula out into the ocean, now the site of the Laupahoehoe Beach Park, famous for its amazing rugged coastal vistas and tragic past (c. mile 27). In 1946 the "April Fools Day Tsunami" swept the lower reaches of town into the sea, crippling the mill's rail line and taking 23 children and 4 teachers with it. The rich history of this coast is well documented at the Train Museum in town (c. mile 25).

A mile down the road off the highway, is the unique Papaaloa Country Store (c. mile 24). A must stop from a respite of the road or a refreshment break. This restored plantation era store is a must. Serving the growing community, the store champions local produce and farm to table dinning, with most of their produce, fish and meat coming from the surrounding farms, highlighting seasonal specials. The building was built in the 1800's and has quaint local charm and plenty aloha for visitors. ☎

Please tell our advertisers you read about them in Hawaii Adventure & Romance Magazine, Mahalo!

PAPAALOA COUNTRY STORE & CAFE
'SOMETHING for EVERYONE'

GROCERY, CAFE, BAKERY & GIFTS

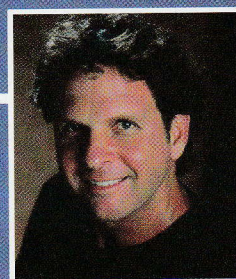
Mon-Thur 7am-7pm
Fri & Sat 7am-8pm

808-339-7614
DINE IN or TAKE OUT

NEW BAR & RESTAURANT
Serving up local plates, fresh fish, burgers, pizza and plenty aloha

35-2032 Old Mamalahoa Hwy
Hwy. 19 @ mile marker 24
MENU ONLINE @ papaaloacountrystore.com

LIVE MUSIC FRIDAYS & SATURDAYS



Hawaii Adventure & Romance Magazine

MICHAEL MILLER - Publisher

JANE JOVELLANOS

Big Island Sales & Marketing Manager

Kailua-Kona phone: (808) 785-8637

Email: hawaiiromance@gmail.com

Alison Bodenstab – Editor and Writer

Laverne Packard – Accounts Manager

Sarah Lagana – Administration

William Britt – Creative Director/Designer, www.wbrittco.com

Hawaii Folder Service – Distribution, (808) 960-0432

Kauai – Main Office: info@kauairomance.com

5337 Makaloa St., Kapaa, HI 96746 808-822-9596/Fax-808-823-0002

Photography and Images: Big Island Visitors Bureau, G. Brad Lewis, Hawaii Forest & Trails, Safari Helicopters, Michael Summers, CJ Kale & Nick Selway - Lava Light Galleries, and Jon Mikan

Contributing writers: Hawaii Oceanic, Jane Jovellanos, Captain Zodiac, Selma Kettwich - Kalapana Cultural Tours

Front Cover Photos: Umauma Falls Adventures

To purchasing Big Island Magazines, E-mail: info@kauairomance.com
Order FREE HAR magazine by sending \$5 each for shipping/mailling,
Allow 3-6 wks for personal check, 1-2 wks for Cashier/Money Order

Psalm 11:14 ☯

God watches closely everything that happens on the Earth.