

**2021 KAMEHAMEHA SCHOOLS ANNUAL REPORT**







# Hō'ike Kū Makahiki o Ke Kula 'O Kamehameha 2021

## 2021 KAMEHAMEHA SCHOOLS ANNUAL REPORT

JULY 1, 2020 - JUNE 30, 2021

5

Welina

### WORLD-CLASS EDUCATION

6

**Navigating the COVID-19 pandemic**

Safety remains a top priority

7

**Let's get digital**

Enhancing a world-class learning experience

### RESILIENT COMMUNITIES

8

**Connecting West O'ahu 'ohana to high-speed internet**

Working together for digital equity

9

**Uniting a community**

The Kalanihookaha Community Learning Center provides lifelong learning opportunities for Native Hawaiians

### GLOBALLY COMPETITIVE PERFORMANCE

10

**Building communities for a better tomorrow**

Continuing Ke Ali'i Pauahi's legacy by cultivating communities

11

**Supporting our 'ohana**

If businesses can survive, communities will thrive

### RESOURCES & IMPACTS

13

**Educational Spending**

16

**'Āina & Innovation**

17

**Endowment**

### PAUHI FOUNDATION

19

**Foundation impact**

20

**Why we give**

22

**2020-2021 Donors**

28

**Imua nā haumāna**

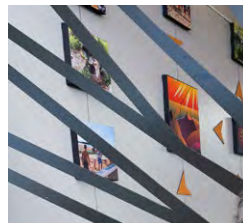
Scholarship recipient spotlight

30

**2020-2021 Pauahi Foundation Scholarship Recipients**



9



20



28



A large-scale mural of a person's face, rendered in various shades of blue and white, covers the background wall. The face is partially obscured by the text. In the lower-left foreground, a painter wearing a mask and safety harness is standing on a red scissor lift, using a long-handled roller to apply paint to the mural. The scene is set outdoors under a clear blue sky.

# Hānai i ke keiki, ola ka lāhui

*Nurture the child and the people thrive*





We are pleased to present to you our Kamehameha Schools annual report – Makawalu 2021.

In this report, you will have a chance to review our performance for the year – in the classroom, in our offices, on our ‘āina, and throughout our communities. We hope you will feel this has been a good year, as we have cared for and educated our keiki, grown our endowment, collaborated with partners, stewarded our ‘āina, innovated through new technologies and worked tirelessly to advance our lāhui.

As you read this report, you will also be able to experience this past year with us through our mo‘olelo. We have included some of the best stories. Stories about our hard-working staff, committed volunteers, loyal tenants, dedicated partners, collaborators and donors. You will also hear from our haumāna, alumni and emerging ‘ōiwi leaders who are guiding our lāhui into a brighter future.

Lastly, as you reflect with us on this past year, including the gauntlet of trials we have all experienced from a very long pandemic to political and economic instability, we think you will agree with us that that the inspiring and immortal words of Kamehameha ‘Ekahi have never rung more true for our people: “I mua e nā poki‘i a inu i ka wai ‘awa‘awa, ‘a‘ohe hope e ho‘i mai ai.”

On behalf of all of us at Kamehameha Schools, we mahalo each of you for your support, contributions and guidance throughout this past year. It continues to be our privilege and honor to serve you and your ‘ohana through the vision of our founder, Ke Ali‘i Bernice Pauahi Pākī Bishop.

## I MUA KAMEHAMEHA!



### ABOVE LEFT:

(From left) Kamehameha Schools trustees Lance Keawe Wilhelm KSK’83, Robert K.W.H. Nobriga KSK’91, Crystal Kauilani Rose KSK’75, Elliot Kawaiho‘olana Mills, and Micah Alike Kāne KSK’87

### ABOVE RIGHT:

Livingston “Jack” Wong  
Chief Executive Officer



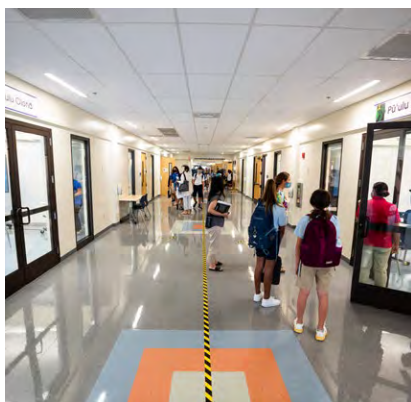
# Navigating the COVID-19 pandemic

## Safety remains a top priority

As the ongoing COVID-19 pandemic continues to affect life on and away from campuses and preschools, Kamehameha Schools remains committed to the safety and well-being of haumāna, staff and members of the KS 'ohana.

When it comes to safety, KS consistently meets or exceeds mitigation strategy guidelines provided by the Hawai'i State Department of Health as the organization is equipped to maintain safe in-person learning across the state.

KS manifests its care for every member of the school 'ohana by following data-proven strategies, including hosting vaccination events for students and staff; encouraging self-monitoring of health and caring for others; wearing masks correctly and consistently; practicing good hand hygiene, including the use of sanitizer; utilizing cohorts and "bubbles" to assist with identifying close contacts; improving ventilation systems and observing appropriate physical distancing; implementing voluntary testing programs; staying home when sick; monitoring internal and external conditions for community transmission; and cleaning and disinfecting multiple points throughout the day.







# Let's get digital

**Enhancing a world-class learning experience**

Kamehameha Schools responded quickly to ensure the safety of haumāna and 'ohana by shifting to virtual classrooms as the COVID-19 pandemic began affecting schools and communities early in the spring of 2020. The leadership team recognized the need to modernize KS' approach to education by delivering a world-class experience through safe and engaging online offerings.

KS Digital became a gateway to an array of educational technology tools, accredited K-12 education and Hawaiian culture-based content for haumāna of all ages. The innovative hub empowers teachers and enriches student experiences, anytime and virtually anywhere.

KS leveraged its long-standing partnership with Arizona State University for access to proven learning management systems as well as the wealth of resources offered by ASU Prep Digital. KS Digital launched in August 2020, and it is being used at KS' three K-12 campuses and 29 preschools. Whether in the classroom for in-person instruction or distance learning when necessary, KS Digital ensures continuity across learning experiences.



# Connecting West O'ahu 'ohana to high-speed internet

## Working together for digital equity

Kamehameha Schools collaborated with Partners in Development Foundation and HawaiiKidsCAN to provide students and families with internet connectivity support to address disparities in broadband internet access amid the COVID-19 pandemic.

The initiative, “WiFi on Wheels,” launched in September 2020 and provides students and their families at West O’ahu’s Kamaile Academy Public Charter School and other members of the community with high-speed internet to support their distance learning needs.

KS Director of Community Engagement **Kalei Kailihiwa KSK’93** notes that the effort has also provided users with the opportunity to take care of telehealth and other social service appointments, as face-to-face contact has been reduced during the pandemic.

The WiFi on Wheels mobile connectivity hub features a router contributed by Cradlepoint and unlimited wireless data from AT&T at a radius of 100 to 200 feet, depending on the terrain of the area. HawaiiKidsCAN is working with additional community partners to roll out more vans to areas including downtown Honolulu, Maui, Moloka’i and Hawai’i Island.

**Top left:** WiFi on Wheels partners gathered for a vehicle demonstration, which included Kamaile Academy Principal Paul Kepka, Partners in Development Foundation Program Manager Terry Nakamura, PIDF Teaching Assistant Napualani Kealoha, HawaiiKidsCAN Executive Director David Miyashiro, and PIDF Teaching Assistant John Nihipali.

**Top right:** The WiFi on Wheels mobile connectivity unit features a high-speed internet router affixed to the top of a van which is deployed to various areas around the Wai’anae community assisting users with connectivity needs.



# Uniting a community

## The Kalanihookaha Community Learning Center provides lifelong learning opportunities for Native Hawaiians

In April 2021, Kamehameha Schools, its project partners and Wai‘anae Coast community members celebrated the opening of the new Kalanihookaha Community Learning Center (KCLC) in Nānākuli Village Center with a small blessing and open house.

Named for the professional legacy of Dr. Agnes Kalanihookaha Cope, known fondly by many as “Auntie Aggie” – a longtime Nānākuli resident and champion for Native Hawaiian health, education, culture and the arts – the new center serves as a place for gathering and learning for community residents and program partners alike.

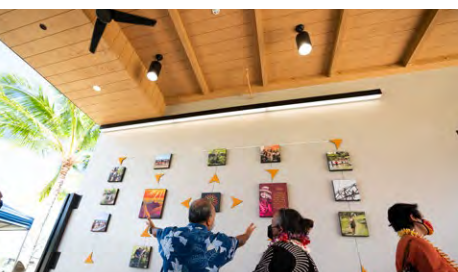
KCLC is positioned to support ‘āina-based programs, career development and training, and provide a home for lifelong learning opportunities for Native Hawaiians and those in the surrounding community. The vision for KCLC was made possible through vital partnerships with entities such as the State Department of Hawaiian Home Lands and the Nānākuli Hawaiian Homestead Community Association, and support from the Hawaiian Community Development Board.



**Above:** The \$10.9 million learning center broke ground in April 2019 and completed construction a year later but delayed opening and programming due to the COVID-19 pandemic. The resulting project is a single-story building that encompasses 6,828 square feet and includes a large multi-purpose room with flexible space, a covered lānai for indoor and outdoor use, a serving kitchen, a large pavilion and a pā or outdoor staging area.

**Left:** Fronting KCLC is a striking, life-sized humpback whale sculpture, Koholā Ola, which was brought to life by the many hands of Wai‘anae Moku keiki and community members under the guidance of artist and area resident Sooriya Kumar. The koholā symbolizes one of the highest, most sacred forms of Kanaloa and signifies knowledge, intelligence and deep connection.

The community is invited to visit and tour the facility. For more information, visit [www.kalanihookaha.org](http://www.kalanihookaha.org), or contact KCLC at 843-9655.





# Building communities for a better tomorrow

## Continuing Ke Ali'i Pauahi's legacy by cultivating communities

As stewards of 'āina Pauahi and her legacy, Kamehameha Schools actively reinvests and manages its assets to ensure the vibrancy of the organization's mission in perpetuity.

To ensure a thriving lāhui, KS' real estate portfolio provides environments for housing development, career growth, food systems stability and cultural identity. These elements are critical to the success of learners and robust communities.

KS is in the early stages of developing the He'eia Plan, a vision and physical master plan and implementation strategy that will guide and prioritize KS' actions for the long-term future of its 507 acres of 'āina in Kāne'ohe, with a focus on 55 acres of commercial properties.

On June 2, 2021, the Hawai'i Community Development Authority unanimously approved a 10-year extension to KS' Kaiāulu 'o Kaka'ako Master Plan, which will allow additional affordable housing units to be built.

The Keauhou Bay Management Plan is a long-term management and land use plan that guides and prioritizes actions for the future planning, improvement, and operational use of approximately 32 acres of KS 'āina in the Keauhou Bay area on Hawai'i Island, as well as 22 acres leased to the Outrigger Kona Resort and Spa.

The Kapālama Kai Plan aligns commercial properties, educational outcomes and community building to direct a 20-year vision for this area. The use of KS' 105 acres of commercial 'āina in the Kapālama ahupua'a focuses on fostering a strong industrial business base, kama'āina housing and an integrated transit-oriented community.

**Above:** Artists Cory Taum KSK'08 and Kahiau Beamer KSK'06 partnered with Kamehameha Schools' Commercial Real Estate Division to honor the rich history of Kapālama with a mural inspired by the mo'olelo of Kamehameha 'Ekahi's efforts to restore lo'i in the ahupua'a after a period of war as a means to feed the people of O'ahu, and begin the unification of the Kingdom of Hawai'i.







# Supporting our 'ohana

**If businesses can survive, communities will thrive**

With communities across the world facing uncertainty around the lengthy public health crisis and resulting economic fallout created by the spread of COVID-19, KS quickly adapted to respond to potential impacts felt by KS tenants and properties, as well as the local economy.

KS' Tenant Assistance Plan was developed to help local business tenants and lessees stabilize operations and survive.



**Above:** In partnership with Howard Hughes, Hawai'i Food & Wine Festival, Hawai'i Agricultural Foundation, and Ham Produce and Seafood, KS distributed food boxes with 35 pounds of produce and goods to 500-plus staff members from Our Kaka'ako and Ward Village tenant retailers.

**Below center:** Longtime Kamehameha Schools tenant Elvin's Bakery was one of over 100 tenants who received support through KS' rent relief program, which provided rent abatement and/or deferral to tenants facing economic hardship due to the pandemic. The rent relief allowed Elvin's to retain its employees during the state's mandatory shutdown of businesses.



**Right:** To boost tenant business while helping those impacted by COVID-19, KS teamed up with celebrity Kelly Hu KSK'86 for the "Buy One, Feed One Hawai'i" campaign. Also known as "BOFO," the campaign encourages individuals eating out to purchase a second meal for someone impacted by the pandemic.

**Left:** KS partnered with Jeff Gress (pictured) and Jasper Wong of POW!WOW! Hawai'i to create and display signage with positive messages at KS commercial properties on O'ahu and Hawai'i Island.







# Resources & Impacts

JULY 1, 2020 THRU JUNE 30, 2021



**Kamehameha Schools is a private charitable educational trust endowed by the will of Hawaiian princess, Bernice Pauahi Bishop (1831-1884), the great-granddaughter and last direct descendant of King Kamehameha I.**

During her lifetime, Princess Pauahi witnessed the rapid decline of the Native Hawaiian population. She knew that education would be key to the survival of her people, and in an enduring act of aloha, she bequeathed to them a precious gift — 375,000 acres of ancestral lands of the royal Kamehameha family and instructions to her trustees that the “rest, residue and remainder of my estate” be used to establish the Kamehameha Schools.

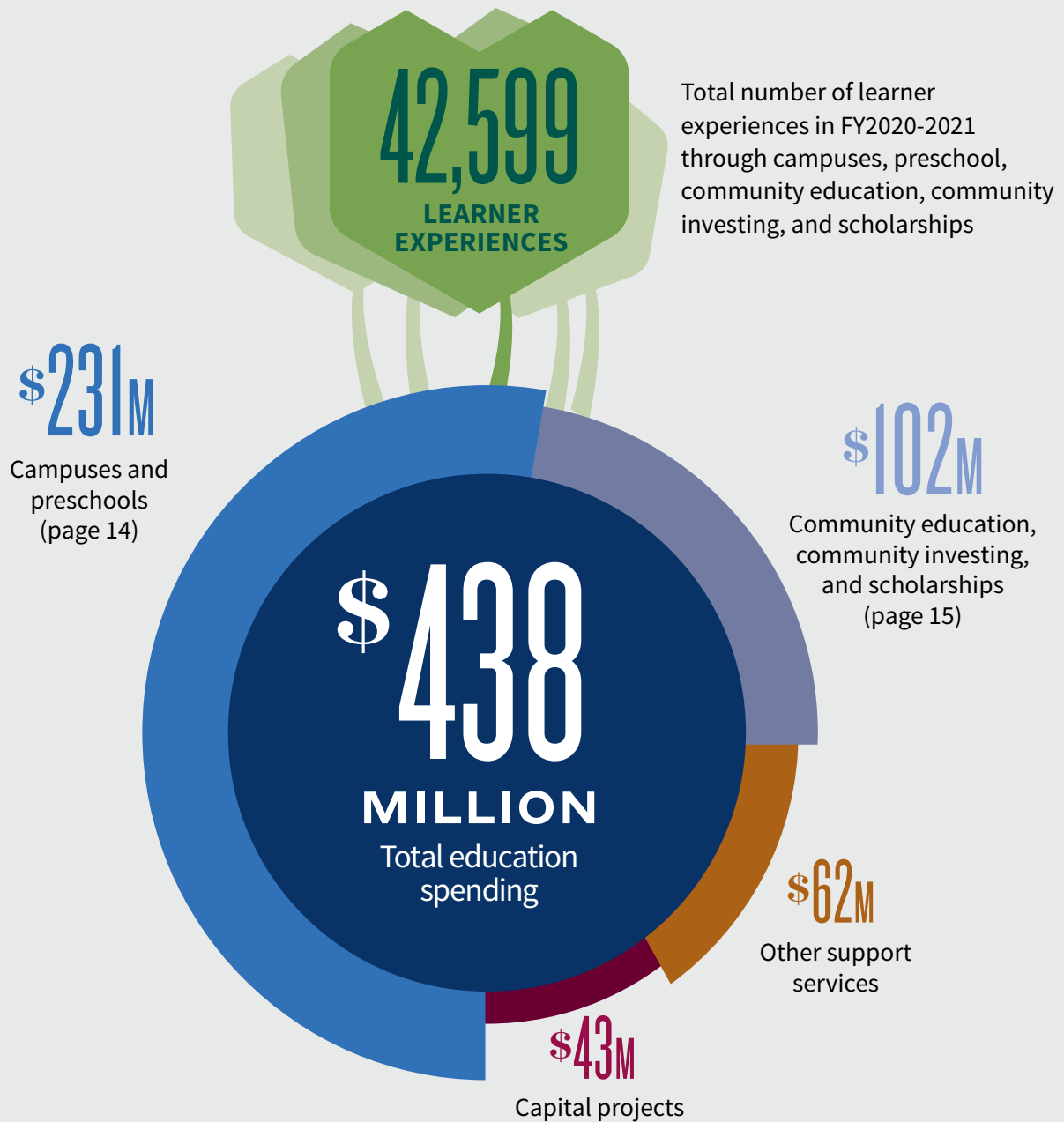
Today, Ke Ali‘i Pauahi’s legacy continues to advance her desire to restore her people through education.





# Educational Spending

During fiscal year 2020-2021, Kamehameha Schools spent \$438 million from its endowment on education, representing 3.8% of the trailing five-year average market value of the endowment for the year, also referred to as “spend rate.” KS targets a 4% spend rate to provide for stability and financial equilibrium over time. In close alignment with the policy, the average spend rate for the last five and 10 years was 3.8%.



**1,403**  
LEARNERS  
SERVED

## Preschools



2  
KAUAI

11  
O'AHU

= PRESCHOOLS

1  
MOLOKA'I

3  
MAUI

12  
HAWAI'I

**29** Preschools  
**85** Classrooms statewide

**\$39.4**  
MILLION  
Spent on preschool  
education

**\$191.9**  
MILLION  
Spent on K-12  
learners on three  
campuses

**\$27.4**  
MILLION  
Spent on  
financial aid

**5,454**  
LEARNERS  
SERVED

## Campuses



**5,731**  
LEARNERS  
SERVED

Kapālama Campus	<b>3,181</b>	Enrolled
	<b>447</b>	Graduated
Hawai'i Campus	<b>1,176</b>	Enrolled
	<b>133</b>	Graduated
Maui Campus	<b>1,097</b>	Enrolled
	<b>117</b>	Graduated

**697**  
GRADUATES

## Financial Aid

**\$2.7M**

Preschools

**\$24.7M**

K-12





# Scholarships

**4,246**  
LEARNERS  
SERVED

## PAUAHI KEIKI SCHOLARSHIPS

**1,323**  
LEARNERS

were funded a total of  
**\$9.6 MILLION**  
to attend other private  
preschools

## KIPONA SCHOLARSHIPS

**676**  
LEARNERS

were funded a total of  
**\$5.2 MILLION**  
to attend other private  
K-12 schools

## NĀ HO'OKAMA A PAUAHI POST-HIGH SCHOLARSHIPS

**1,976**  
LEARNERS

were funded a total of  
**\$11.0 MILLION**  
to attend college

**\$28.2**  
MILLION  
Scholarships  
disbursed

**\$32.9**  
MILLION  
Disbursed

# Community Investing

**179** projects funded through  
community investing efforts

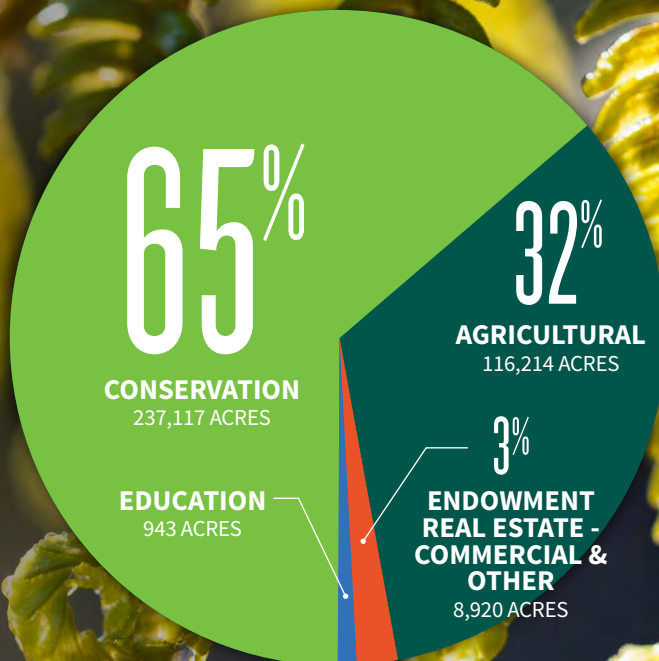
**27,521**  
PARTICIPANTS  
SERVED



# 'Āina

## OUR LANDS, OUR KULEANA

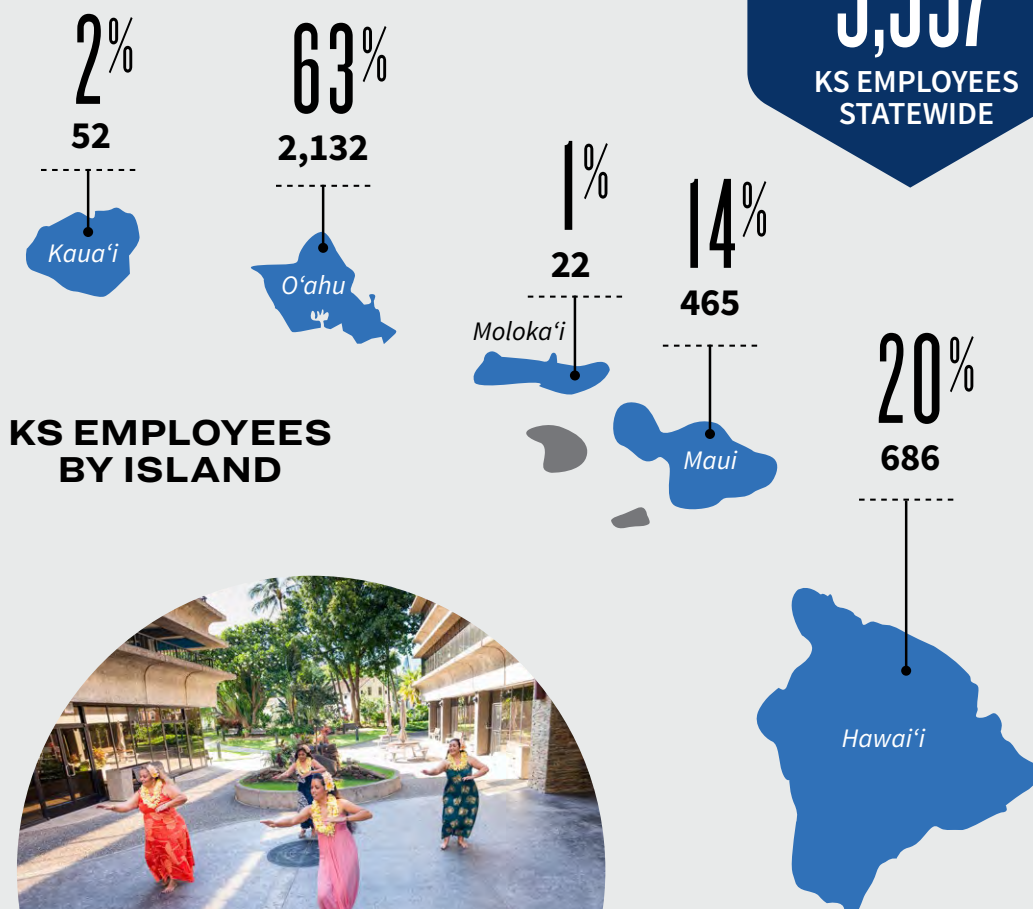
Endowment real estate lands make up 3 percent of total acreage (363,194 acres) belonging to Kamehameha Schools and is mostly commercial and residential. Agricultural and conservation lands comprise 97% and are primarily considered sustainability assets, not included in the endowment fund.



**\$13.8**  
MILLION

Invested (net of agricultural rents) to steward agricultural and conservation lands and natural resources

**3,357**  
KS EMPLOYEES  
STATEWIDE

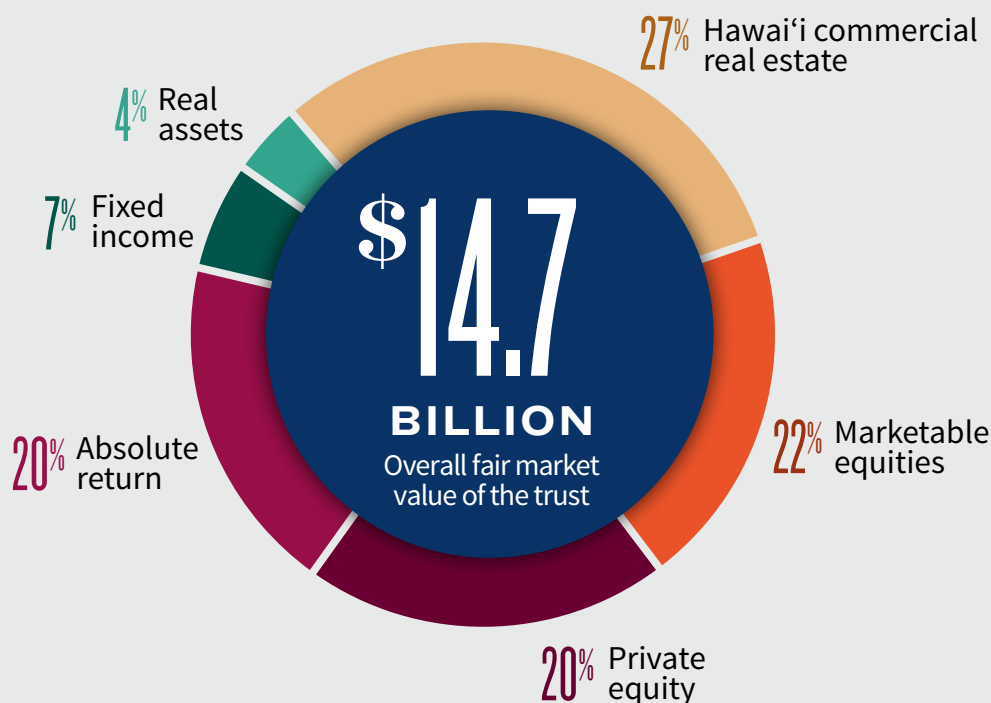




# Endowment

## KAMEHAMEHA SCHOOLS TRUST

Kamehameha Schools' mission is 98% supported by its endowment with three percent being supported by tuition, net of financial aid. The endowment was valued at \$14.7 billion as of June 30, 2021. A globally diversified financial assets portfolio of \$10.7 billion, and Hawai'i commercial real estate representing \$4.0 billion at fair market value comprise the endowment's value.



## INVESTMENT RETURNS

The goal of Kamehameha Schools' endowment is to provide superior risk-adjusted long-term returns to support its mission in perpetuity. The 10-year return added value versus a policy-weighted average of market benchmarks and added value versus its CPI + 5% objective of 6.9%, an objective designed to provide for real growth and financial equilibrium.

	10 Years Annualized	5 Years Annualized	1 Year
Endowment Fund	8.8%	10.6%	27.2%
Policy Benchmark	7.5%	9.4%	24.9%

## For more...

including a copy of Kamehameha Schools' audited "Consolidated Financial Statements and Supplemental Schedules" for fiscal year 2020-2021, please visit [www.ksbe.edu/annualreports](http://www.ksbe.edu/annualreports).



Pauahi Foundation

## *Continuing Ke Ali'i Pauahi's Legacy of Giving*



### **ALOHA MAI KĀKOU,**

Communities are only as resilient as the people in them. This year, in the face of many challenges and changes wrought by the pandemic, our school, our students and our donors have emerged with a deeper appreciation for each other and a greater sense of purpose.

The fact that the last 12 months marked a record high for giving through the Pauahi Foundation is evidence of our community's fortitude, resilience and commitment.

KS leadership, staff and alumni, along with community partners, stepped up to accept the kuleana of uplifting our lāhui. The generosity of our donors enabled the Pauahi Foundation to award 416 scholarships; each one represents the chance for our haumāna to pursue higher education and for an entire community to benefit from their accomplishments as 'ōiwi leaders.

Recognizing the impact that education can have on a community's long-term ability to thrive was the motivation behind 2,265 scholarship gifts from our current hui of donors, including a planned gift of \$4 million from **John A. Meyer KSK'51** and his wife, Georgia J. Meyer.

The degree of generosity and the level of resilience we have seen this year is nothing short of inspiring. At the same time, with more than 1,900 scholarship applicants, we know that there are many more deserving students who need assistance than there is funding available to help them.

With your help, we will continue Ke Ali'i Pauahi's powerful legacy of giving and emulate her commitment to building a thriving lāhui, especially when times are tough.

Me ka ha'aha'a,

### **Pono Ma'a**

Director, Office of Advancement  
Executive Director, Pauahi Foundation





# Foundation impact

**\$7.13M**

TOTAL  
DONATIONS

**923**

TOTAL NUMBER  
OF DONORS

**416**

SCHOLARSHIP  
AWARDS

**17**

NEW ENDOWMENT  
SCHOLARSHIP  
FUNDS



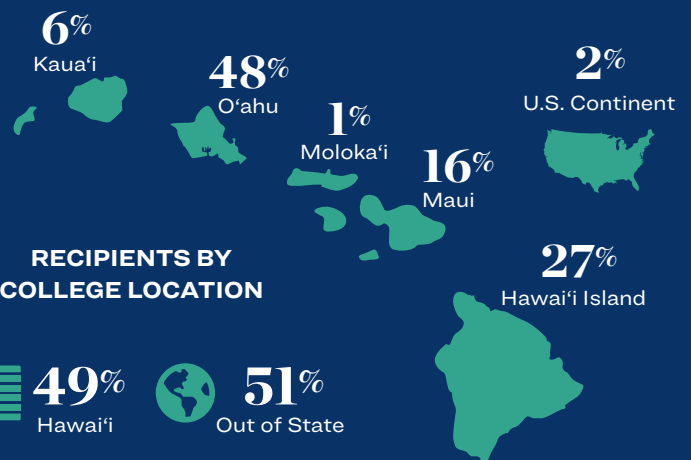
**\$639,092**

TOTAL DISBURSED TO POST-HIGH RECIPIENTS

## RECIPIENTS BY FIELD OF STUDY

- 28%** Science
- 19%** Liberal Arts, Arts and Social Sciences
- 11%** Business
- 9%** Education
- 9%** Health Care
- 7%** Hawaiian Culture, Language and History
- 3%** Law
- 3%** Computer and Information Systems
- 3%** Engineering
- 3%** Other
- 2%** Communications and Journalism
- 2%** Vocational and Technical Studies
- 1%** Environmental Sciences

## RECIPIENTS BY HOMETOWN



## RECIPIENTS BY COLLEGE LOCATION





# Why we give

KA HĀ'AWI MANAWALE'A

## Alaka'ina Foundation

### Paying it back by paying it forward

Against a soundtrack that included songs by slack-key legend Gabby Pahinui, 1971 brought about a groundswell of renewed focus on Hawaiian culture, language, and activism. Around the same time, the first ever Pipeline Masters surf competition was held, Zippy's opened a second location in Kaimukī, and Eddie Aikau was named Lifeguard of the Year.

Graduating seniors from Kamehameha Schools Kapālama in 1971 realized a sense of responsibility to do something meaningful with the remarkable opportunity they'd been given. Fifty years later, a group of proud alumni from that class continues paying it forward.

"At a heartfelt level, we recognize the impact of the education we received; and, as beneficiaries of Ke Ali'i Pauahi's legacy, we feel it's our kuleana to help steward the next generation," said **Michael "Kimo" Wong KSK'71**, president of the board of the Alaka'ina Foundation. The nonprofit was founded in 2013 and is run by Kamehameha Schools Class of 1971 alumni.

Along with board members **James "Kimo" Bacon KSK'71** (VP and executive director), **William "Bill" Villa KSK'71** (secretary), and **David "Dave" A. Mortensen KSK'71** (treasurer),

the classmates are committed to purpose-driven acts of philanthropy that have a significant and positive impact for nā pua a Hawai'i, the youth of Hawai'i. "Our mission," Bacon says, "is to build leadership programs and opportunities for Hawaiian haumāna with the aptitude and vision to lead our communities going forward."

The chance for KSK '71 alumni and their families to come together in 2021 was not only a cause for celebration that brimmed with food and song and storytelling, it was also an opportunity to mark the special reunion by making a collective gift of \$1 million to the Pauahi Foundation for post-high scholarships.







# John A. Meyer KSK'51 and Georgia J. Meyer

## A legacy of giving

“‘A‘ohe mea koe ma kū‘ono” translates as “nothing remains in the corners,” and describes one who is extremely generous, giving freely without reservation. This ‘ōlelo no‘eau fittingly describes **John A. Meyer KSK'51** and his wife, Georgia.

The magnitude of their generosity is reminiscent of Ke Ali‘i Bernice Pauahi Bishop, who through a remarkable and distinct vision, left the vast expanse of her lands for her people, ultimately creating innumerable educational opportunities and a tremendous legacy.

Meyer, a former baseball and football student-athlete, would go on to marry Georgia and become a systems computer consultant and supporter of the Pauahi Foundation. In 2012, in loving memory of her late husband, Georgia established a scholarship in their names to support Kamehameha Schools graduates pursuing areas of interest to the couple, including athletics and engineering (John’s interests) and business and finance (reflecting Georgia’s).

The Meyers understood just how impactful an endowed gift could be. In eight years since establishing the scholarship fund, they have supported close to 40 students in their educational journeys.

“Donors have so many options, and they decided to invest in the future of Hawai‘i and that means a lot and gives me encouragement to give back to the community,” says **Kia‘i Keone KSK'21**, a 2021 John A. and Georgia J. Meyer scholarship recipient.

Unbeknownst to the Pauahi Foundation, John and Georgia had intentions to reach even more deserving students with their generosity by naming the foundation as their main beneficiary and leaving a planned gift upon Georgia’s passing: the largest gift ever donated to the Pauahi Foundation in the amount of \$4.035 million. Following in the footsteps of Ke Ali‘i Pauahi and her model of philanthropy, through the stewardship and care of their gift, the Meyers will continue to bring hope and opportunity to students for years to come.

*Give with  
Pauahi*

### LET US COME TOGETHER AND TRANSFORM LIVES IN OUR HAWAIIAN COMMUNITY!

Help us continue Pauahi’s legacy of giving by volunteering time and/or making a donation to the Pauahi Foundation to help uplift the Hawaiian community.

LEARN MORE AT [PAUHI.ORG](https://pauahi.org).

# 2020-2021

## Donors

We are grateful for the generosity of donors who have included the foundation in their charitable giving. Because of these gifts, Pauahi Foundation was able to disburse 416 scholarship awards to aspiring Native Hawaiian students this year. As an educational institution that transforms lives within the Hawaiian community, our mission has never been more relevant. Our giving hui celebrates the breadth and diversity of our donors and the impact of their support. Mahalo for entrusting us with your gifts and helping to further Ke Ali'i Pauahi's legacy.

**KEY** † Deceased  
S Kamehameha Schools staff

We are deeply humbled and grateful for Kamehameha Schools alumni, faculty, and staff who made a gift to Pauahi Foundation this fiscal year in addition to their dedicated service. All donors listed are recognized for contributions made during the fiscal year from July 1, 2020 to June 30, 2021.

### KA HUI KŪLANIHĀKO'I

\$10,000 OR MORE

Anonymous  
Ahahui o Nā Kauka  
Alaka'ina Foundation  
Charles Schwab  
Pamela L. Ching<sup>77</sup>  
Dr. & Mrs. Francis K. Chun<sup>79</sup>  
Compass Group USA, Inc.  
Wendell Davis<sup>71</sup>  
William<sup>49</sup> & Judith Fernandez  
Kamehameha Schools Hawai'i Parents & Teachers 'Ohana  
Kevin<sup>77</sup> & Janice Kekoa  
Drs. Andy and Natalie L.<sup>92</sup> Lee  
Leimalama Lee Loy  
Leianne K. Lee Loy<sup>82</sup>  
Myron J. Mitsuyasu  
Na Ali'i Consulting & Sales LLC  
Nakupuna Foundation, LLC  
Nakupuna Solutions  
Schwab Charitable Fund  
Timothy<sup>5</sup> & Marie Slottow  
Glenn & Lytle<sup>74</sup> Takemoto  
The Georgia J. Meyer Trust  
The Harry and Jeanette Weinberg Foundation

### KA HUI UA LOKU

\$5,000 – \$9,999

Dorrance Family Foundation  
Fidelity Charitable Gift Fund  
Kalino Foundation / Kalino LLC  
Kamehameha Schools  
Kamehameha Schools Association of Kaua'i  
Lauren Nahme<sup>5</sup>  
Brian & Debbie Lau<sup>72</sup> Okamura  
Pacific Fleet Submarine Memorial Association  
Crystal K. Rose<sup>75, S</sup> & Richard S. Towill  
Travis<sup>89</sup> & Joby<sup>89</sup> Tom  
Towill Family Foundation  
Warrior Printing, LLC  
Livingston Jack Wong, Jr. <sup>S</sup> & Kimi Oyama  
Cody K. Yancey<sup>96</sup>

### KA HUI UA NĀULU

\$2,500 – \$4,999

Ameriprise Certificate Company  
Hawaiian Electric Company Incorporated  
Randall<sup>68</sup> & Nancy Hee  
Dr. Claire K. Hughes<sup>54</sup>  
Kamehameha Schools Maui Campus Parent Teacher Student 'Ohana  
Kamehameha Schools Student Activities - Maui Campus  
Dr. Lori Ann Kim<sup>97</sup>  
R. Kawika Makanani<sup>66</sup>  
Nelson Wong<sup>87, S</sup> & M. Kāhealani Nae'ole-Wong<sup>87, S</sup>  
Heather<sup>92, S</sup> & Lawrence Park<sup>87, S</sup>  
Ben<sup>S</sup> & Cindy Salazar  
Snyder Family Foundation  
Oswald<sup>50</sup> & Ku'ulei Stender<sup>50</sup>  
The Gaylord K. L. H. Ching Trust  
The J. Taylor Crandall Revocable Trust  
Frank A. Trusdell<sup>76</sup>  
Ms. Lisa K. Wisotzky  
Burton S. Yuen<sup>5</sup>

### KA HUI KUĀUA

\$1,000 – \$2,499

Anonymous (8)  
Byron & Linda AhHee  
Michael<sup>66</sup> & Chu Cha Asam  
Violet W. Awana  
Jmi Bassett Asam<sup>97</sup>  
Benevity Inc.  
Beppu 'Ohana: Len, Wanda, Mark<sup>96</sup>, Sarah<sup>96</sup> & Mackenzy<sup>24</sup>  
Sean<sup>71</sup> & Mary Browne  
Zandin U. M. Burke<sup>12</sup>  
Timothy & Audrey Ann Kanani Burke<sup>86</sup>  
Dr. Sandra K. Chock-Eng<sup>66</sup>  
Duane<sup>72</sup> & Bette Chun  
City & County Of Honolulu - Division of Motor Vehicles  
Loy Cluney<sup>60</sup>  
Kevin Cockett<sup>84, S</sup>  
Ian-James K. Custino<sup>95, S</sup>  
DA Davidson Wealth Management  
Hiram<sup>59</sup> & Trudi de Fries  
Shelby K. DeCosta<sup>99</sup>  
Carisa L. K. Duffy<sup>92</sup>





Kelly Beth Dukelo<sup>5</sup>  
 Eli Lilly and Company Foundation  
 Shirley V. Ennis<sup>46</sup>  
 Deborah<sup>5</sup> & Fred Erskine  
 Fidelity Brokerage Services, LLC.  
 Ms. Marcy E. Fleming<sup>5</sup>  
 Dr. Stan Fortuna, Jr. & Nancy Fortuna  
 Friends of Hawai'i Robotics  
 Ronald & Hali'imaile Goo<sup>56</sup>  
 Todd V. Gray<sup>5</sup>  
 Moana C. Heu<sup>74</sup>  
 Paula Hirai<sup>71</sup>  
 Amona K. Ho  
 Darrel<sup>5</sup> & Denise Hoke  
 Brandon B. Hong<sup>02</sup>  
 Denise L. R. Iseri-Matsubara<sup>81</sup>  
 Jon T. Iwatani<sup>5</sup>  
 Darla M. Ka'auamo  
 Kahiau Pacific LLC.  
 Micah<sup>87,5</sup> & Joelle Kāne  
 James<sup>66</sup> & Valerie<sup>66</sup> I. Kardash  
 M. Mālia Kau<sup>91</sup>  
 Kenneth<sup>47</sup> & Wanda Kimseu<sup>50</sup>  
 Arlene Kon<sup>54</sup>  
 Michael & Xann<sup>84</sup> Maile Kuenzli  
 Bobbie P. Lau<sup>84,5</sup>  
 Alison L. Leary<sup>5</sup>  
 Herbert Levy  
 Kim Lorch & Diana Malotte  
 LPL Financial  
 Drs. Emanuel Drechsel & Teresa Makuakāne-Drechsel<sup>71</sup>  
 COL Kendell L. Mann<sup>82</sup>  
 Martin P. Martinson<sup>68</sup>  
 The Mau 'Ohana<sup>91,5</sup>  
 William Henry Kekoa McClellan<sup>02</sup> & Nicole Makana Shook<sup>03</sup> McClellan  
 Merrill Lynch, Pierce, Fenner & Smith Inc.  
 Jennie K. Molina<sup>51</sup>  
 Beth K. A. Nakamura<sup>01</sup>  
 Jason O. Navarro<sup>89</sup>  
 Eli D. Pane'e, Jr.<sup>59</sup>  
 Pearl Harbor Hawaiian Civic Club  
 Diane J. Plotts  
 COL Michael E. Rawlins Sr.<sup>63</sup>  
 Dana K. Sato<sup>5</sup>  
 Shell Oil Company Foundation  
 Lloyd H. Sing<sup>89,5</sup>  
 Frank & Sharen Sylva  
 Robert & Jane<sup>65</sup> Terry  
 Walter<sup>84,5</sup> & Tammy Thoemmes, III  
 Wallace K. Tirrell<sup>53</sup>  
 Creighton T. Tuzon<sup>89</sup>  
 Vanguard Charitable  
 Glenda<sup>61</sup> & Sam White  
 Keevin Kawai Winchester<sup>05</sup>  
 Grant Yamashita<sup>5</sup>

## KA HUI KO'IAWE

\$500 – \$999

Anonymous (3)  
 Heidi K. Aceret<sup>90</sup>  
 Glennie G. Adams<sup>78,5</sup>  
 Keith Kalani Akana<sup>75</sup>  
 Rachelle L. Andrade<sup>5</sup>  
 George K. Apo, Jr.<sup>56</sup>  
 Douglas<sup>68</sup> & Meta Katherine Apo  
 William<sup>66</sup> & Phyllis<sup>66</sup> Beimes, III  
 Keolu<sup>76,5</sup> & Luann Bento<sup>5</sup>  
 Summer Lee U. Bloomfield<sup>94</sup>  
 Marsha<sup>70</sup> & Bob Bolson  
 Alyssa K. B. Braffith<sup>70,5</sup>  
 Colin K. Brede<sup>70</sup>  
 Bright Funds  
 Ramsey K. Brown<sup>05</sup>  
 Courtney M. Brown  
 Frederico L. Cachola, Jr.<sup>53</sup>  
 Dr. Kimberly L. M. Carvalho-Faucher<sup>85</sup> & Cory Faucher  
 Dr. Taran<sup>95,5</sup> & Nizhoni Chun  
 Constance Collins<sup>5</sup>  
 Ronald A. Cox<sup>5</sup>  
 Charles K. Crabb  
 Stanley C. Dahlin<sup>61</sup>  
 Patricia Dees  
 Buddy Dees, Jr.  
 Andrea E. L. Deutsch<sup>97</sup>  
 F. Mahina Paishon Duarte<sup>94</sup> & Thomas Kā'eo Duarte<sup>5</sup>  
 William Kalani Fong<sup>91</sup>  
 John & Nancy Fox  
 Leah K. Freitas<sup>01</sup>  
 Frontstream  
 Alike<sup>94</sup> & Haunani<sup>97,5</sup> Fujimoto  
 Evan Golly<sup>5</sup>  
 Kanani Young Harris<sup>90,5</sup>  
 A. Kilohana Hirano<sup>94,5</sup>  
 Kenneth E. Ho  
 Ross & Nikki<sup>5</sup> Iwata  
 James & Rita Jaeger  
 Kirstin A. Kahaloa<sup>01,5</sup>  
 Anthony<sup>65</sup> & Diana Kam

Kamehameha Schools Maui Campus  
 Earl<sup>5</sup> & Patricia Kawaa  
 Nālani Blane<sup>94,5</sup> & William Kealaiki<sup>94</sup>  
 Sydney<sup>69</sup> & Kawehi Keli'ipule'ole<sup>76</sup>  
 Kevin K. Kidder<sup>95</sup>  
 Michael<sup>65</sup> & Patty Kincaid  
 Shon I. Kitashima<sup>93,5</sup>  
 Kauai M. Kitashima<sup>98</sup>  
 Leon Edwin H. Kitashima<sup>02,5</sup>  
 Jarom H. Kitashima<sup>97,5</sup>  
 Ian P. K. S. Kosora<sup>91</sup>  
 Frances Laikona<sup>5</sup>  
 Randy A. Lake<sup>73,5</sup>  
 Naomi Losch<sup>63</sup>  
 Tedmund K. Ma'a<sup>82,5</sup>  
 Manuheali'i Inc.  
 E. Ann McBirnie<sup>54</sup>  
 Louis<sup>62</sup> & Anna Marie Medeiros  
 Freidalane K. M. Menezes<sup>59</sup>  
 Elliot K. Mills<sup>5</sup>  
 Carol J. Moad<sup>72</sup>  
 Nā Pua Maeole O Kamehameha  
 Gabriel L. Nae'ole<sup>85,5</sup>  
 Euphemia Nagashima  
 Cara Nakamura<sup>5</sup>  
 Marc C. Naval<sup>96</sup>  
 Sheryl L. Nicholson<sup>5</sup>  
 Benjamin & Geralyn Nihipali, Jr.  
 Carlton K. S. Pang<sup>66</sup>  
 Raleigh H. Reid<sup>71</sup>  
 Michelle N. K. Sasaoka<sup>84,5</sup>  
 Scott W. H. Seu<sup>83</sup>  
 Dennis<sup>76</sup> & Lauren Shak  
 Carrie E. Shoda-Sutherland<sup>5</sup>  
 Race V. K. Skelton<sup>98</sup>  
 Henry & Dancine<sup>79,5</sup> Takahashi  
 Randolph & Debora<sup>66</sup> Tandal  
 Jack & Pam Terry  
 Melvin & Linda Tom  
 Bran-Dee Torres<sup>93,5</sup>  
 Charles K. Wahineho'okae, Jr.<sup>66</sup>  
 Rick & Noelani Whittington<sup>66</sup>  
 Roy C. Wilson, Jr.<sup>66</sup>  
 Benjamin<sup>49</sup> & Muriel<sup>50</sup> Yin  
 Calvin Young<sup>74</sup>  
 The Benevity Community Impact Fund





# KA HUI NOE

\$250 – \$499

Anonymous (8)  
 Vladimir Abadzhiev<sup>S</sup>  
 Gail M. A. Abrena-Agas<sup>'00</sup>  
 Pualani S. Akaka<sup>'66</sup>  
 William K. Akina<sup>'05</sup>  
 Valerie M. Amby-Kamakeeaina<sup>'94, S</sup>  
 Deborah Y. Ancheta<sup>'71</sup>  
 Ms. Natalie M. Andrade<sup>'95</sup>  
 Raynard L. Apana  
 Scotty Bowman<sup>'52</sup> & Lynn Apo<sup>'64</sup>  
 Pamela L. Asuega-Keawe<sup>S</sup>  
 Noelani T. Balai<sup>'70</sup>  
 Pakalani J. Bello<sup>'97, S</sup>  
 Augusta-Helen L. Bento<sup>'50†</sup>  
 Sarah N. Beppu<sup>'96</sup>  
 Wesley Blackstad<sup>'00</sup>  
 Duke & Ashlynn<sup>S</sup> Book  
 Kenten S. Boro<sup>'14</sup>  
 Shane L. L. Briones<sup>'01</sup>  
 Ella L. & Carlton E. Brooks  
 Vann & Dolores<sup>'65</sup> Camacho  
 Winfred<sup>'76</sup> & Cindy<sup>'76, S</sup> Cameron  
 Martha Carrasquillo<sup>S</sup>  
 Dr. Ross H. Chang<sup>'74</sup>  
 Brian Y. Chang  
 Jonathan<sup>S</sup> & Diana Char  
 Daniel K. Chong<sup>'94</sup>  
 Michael K. Chong<sup>'97</sup>  
 Kyle K. Chong<sup>'01</sup>  
 Ikaia & Cindy Chu<sup>'16</sup>  
 Maile Cluney<sup>S</sup>  
 Kimberly H. Coleman<sup>S</sup>  
 J. Richard Cook  
 Mark N. Crabbe<sup>'80</sup>  
 Elizabeth Jane Culp<sup>'78</sup>  
 Kelsey M. Dees  
 Kehaulani E. Delostrico<sup>'82, S</sup>  
 Kelly K. DePonte<sup>'71</sup>  
 Leiomalama E. Desha<sup>'74</sup>  
 Bryan L. DeVore<sup>S</sup>  
 Moya K. Donahue<sup>'80, S</sup>  
 Ronald & Corleen Estes  
 Hailama<sup>'89, S</sup> & Elena<sup>'93</sup> Farden  
 Blaine & Jean<sup>S</sup> Fergerstrom  
 Rinda J. Fernandes<sup>'66</sup>  
 Hualani J. Fernandes<sup>'57</sup>  
 Tatiana K. Fox<sup>'00, S</sup>  
 Bill & Marcia Grace-Mitchell  
 Priscilla K. L. H. Hanna<sup>'65</sup>  
 Chelsey K. Harbottle<sup>'02</sup>  
 James K. Hardy<sup>'04</sup>  
 Van C. Hare, IV<sup>'86</sup>  
 Racine Hee<sup>'89</sup>  
 George L. Heiligman<sup>'66</sup>  
 Elizabeth Hokada



Ashley M. Howell<sup>'10</sup>  
 Koreti V. Ili<sup>S</sup>  
 Tamotsu Iwaishi  
 JAM Construction  
 Coleen I. Ka'anehe<sup>'78, S</sup>  
 Aurora K. Kagawa-Viviani<sup>'99, S</sup>  
 Chester<sup>'57</sup> & Sybil Kahapea  
 Joseph<sup>'71</sup> & Susan<sup>'71</sup> Kahiapo, Jr. †  
 Alike K. Kaiwi<sup>'93</sup>  
 Alison F. Kajiwaru<sup>S</sup>  
 Shea-Lah K. Kama<sup>S</sup>  
 Napualokelani Kamakele<sup>'95</sup>  
 Michelle A. Kamali'i-Ligsay<sup>'00, S</sup>  
 Duke & Tracy<sup>S</sup> Kaneakua  
 Yumi Kasukawa<sup>S</sup>  
 John<sup>'71</sup> & Suzette<sup>'71</sup> Kaulukukui  
 Bruce & Lianne<sup>'82, S</sup> Kekuewa  
 T. Hoku Keolanui<sup>'78</sup>  
 Roberta H. Kikuchi<sup>'71</sup>  
 Shelli Kim<sup>S</sup>  
 Emmett<sup>'90</sup> & Mei Li Kinney  
 Ronelle K. Kopp<sup>'75</sup>  
 Rawlette Kraut<sup>'66</sup>  
 Dennis Kuewa<sup>'68</sup>  
 Justine C. Lafata<sup>'91</sup>  
 Nadine T. Lagaso<sup>S</sup>  
 Frank & Lee Choo Lau  
 Joan L. Lee  
 Ann I. Leong<sup>'66</sup>  
 'Ohana of L. Kaipohehea Moses Sr.  
 Kainoa J. Lincoln<sup>'95</sup>  
 Puanani Lindsey<sup>'61</sup>  
 Maureen Liu-Brower<sup>'71</sup>

Delia K. Long<sup>'89</sup>  
 Brenda Lowrey  
 Felicia A. Lum  
 Bettina Lum<sup>S</sup>  
 Tex & Darlene<sup>'89</sup> MacAuley  
 Wanda C. Machado<sup>'71</sup>  
 Ha'aeo B. Mansfield<sup>'66</sup>  
 Maria Massa<sup>S</sup>  
 Carmen L. Matsuura<sup>S</sup>  
 Shannon K. K. McCandless<sup>'03</sup>  
 Michelle L. Medeiros<sup>'87, S</sup>  
 James & Lisa<sup>'76</sup> Mendoza  
 Alexis Meyer<sup>S</sup>  
 Darin K. Mijo<sup>S</sup>  
 Jamee M. Miller<sup>S</sup>  
 Maile E. Mundon<sup>'89, S</sup>  
 Dianne A. Muraoka<sup>S</sup>  
 Claudette P. Na'au'ao<sup>'56</sup>  
 Elaine A. Nu'uhiwa<sup>S</sup>  
 Andrea P. Oka<sup>'86, S</sup>  
 Carol-Ann M. Ota<sup>S</sup>  
 Austin L. Pacheco  
 Joshua D. Padilla<sup>'08</sup>  
 Michael J. Pagan<sup>'70</sup>  
 Aileen K. Pane'e<sup>'60</sup>  
 Patrice Y. Perrin<sup>'83</sup>  
 Anna Peters<sup>S</sup>  
 Lesley Ann N. Pico-Lilio<sup>S</sup>  
 Gabriel<sup>'63</sup> & Evelyn Pua'a, Jr.  
 Paula J. Purdy<sup>S</sup>  
 Sarah L. Razee<sup>S</sup>  
 Ku'ulei Reyes<sup>'57, S</sup>

Robotics Education & Competition  
 Foundation  
 John Roxburgh, Jr.<sup>'66</sup>  
 Laurie U. Seto<sup>'77, S</sup>  
 Mavis M. H. Shiraishi-Nagao<sup>S</sup>  
 Sheldon R. Smith<sup>'85</sup>  
 Linda M. L. Soma<sup>'61</sup>  
 Kapiolani M. Street<sup>'07</sup>  
 Mark A. Sweat & Nancy L. Ahuna-  
 Sweat  
 Barbara Taum  
 Gail Taylor  
 Ruth N. Teanio<sup>S</sup>  
 The Benevity Community Impact  
 Fund  
 Michael & Penny Tibbitts  
 Bobbie L. Tom<sup>'79, S</sup>  
 Rick Akau & Sabrina Toma<sup>S</sup>  
 C. Buffy<sup>'91, S</sup> Trugillo & William  
 Trugillo  
 Keikilani R. Uehara<sup>'95, S</sup>  
 United Way of Brevard County, Inc.  
 United Way of the Columbia-  
 Willamette  
 Chucky<sup>'60</sup> & Barbara Von  
 Arnswardt  
 Sandee Nohea Walker<sup>'96, S</sup>  
 Margaret Walls  
 Bruce<sup>'67</sup> & Charmain<sup>'67</sup> Wong  
 Georgia H. Wong<sup>'70</sup>  
 Wallace Wong<sup>'77</sup>  
 Kara N. Wong Ramsey<sup>'01</sup>  
 YourCause, LLC.





## KA HUI 'OHU

\$100 – \$249

Anonymous (11)

Terry-Lynn K. Adams-Kaonohi<sup>'91, S</sup>

John & Sharrie<sup>'63</sup> Ah Chick, Jr.

Grace Ah Yo

Liz<sup>'93, S</sup> & Kauhi<sup>'93</sup> Ahana

Gailyn A. Ahuna-Lum<sup>S</sup>

Racquel K. Aikala<sup>S</sup>

Jonah H. Akaka<sup>S</sup>

Dr. Jeffrey Akaka<sup>'71</sup>

Moana Akana<sup>'62, S</sup>

Rita P. Akana<sup>'66</sup>

Benjamin K. Akana<sup>'73</sup>

Arlette Aki<sup>'61</sup>

Clarence & Patricia<sup>'61</sup> Ako

Jason J. Alexander<sup>S</sup>

Jaysha K. K. Alonzo-Estrada<sup>'15</sup>

Nicole Altman<sup>S</sup>

Paulyne K. Anakalea<sup>'63</sup>

James & Tina<sup>'76</sup> Andrade

Irene K. Andrews<sup>'70</sup>

Wendy Antoncich<sup>'68</sup>

Todd<sup>'85</sup> & Jaime<sup>'86, S</sup> Apo

Michel S. Arakaki<sup>S</sup>

Raine M. A. Arndt-Couch<sup>'01</sup>

Robyn Au<sup>'72</sup>

Bank of America Employee Giving Campaign

Loretta Baptist

Kevin L. L. Baptist<sup>'70</sup>

Leslie H. Barker

Darcy K.<sup>'82</sup> & Jillinda A. Barrios

Maryann Barros<sup>'70</sup>

Ben & Charlotte Bautista

Douglas S. Bell<sup>'61</sup>

Caroline K. Belsom<sup>'66</sup>

Brucella H. Berard<sup>'56</sup>

Dr. Carl Kalani Beyer<sup>'64</sup>

William<sup>'62</sup> & Rowena<sup>'62</sup> Blaisdell

Lahela M. Blake<sup>'96</sup>

Leah H. Borsting<sup>'98, S</sup>

John<sup>'75</sup> & Karen Brandt

Suzanne G. Brinkman<sup>S</sup>

Kevin H.K. Brown<sup>'88</sup>

Jeffery<sup>'76</sup> & Kaleilehua Bruchal

Paula Ann Burgess-Tauala<sup>S</sup>

Kekoa Burns<sup>'76</sup>

Mr. & Mrs. Stephen Kaufman<sup>'85</sup>

Andrew<sup>'63</sup> & Darlene Carlmark

Visaluana Castillo

Evangeline J. Catipon<sup>S</sup>

Elizabeth Cawrey<sup>S</sup>

Lauwaeomakana D. Cazimero<sup>'67</sup>

Jennifer I. M. Chalaire<sup>'97</sup>

Janel<sup>S</sup> & John Chandler

Paula C. H. Chang<sup>'73</sup>

Donna Ching<sup>'73</sup> & Richard Leman

Jay M. Chow

Lindsey P. Chun-Hori<sup>'04, S</sup>

County of Hawai'i Department of Finance

County of Kaua'i Department of Finance

Erika K. Cravalho-Meyers<sup>'95, S</sup>

Alan R. & Joni<sup>'75</sup> Pulani Yee

Cumpston

CyberGrants on behalf of Lawrence

Livermore National Lab

Mary Cockett DeLapp<sup>S</sup>

Lauren DeRosier

Jose Jimenez & Megan DeRosier Jimenez

Samuel<sup>'93</sup> & Chanel Desilva<sup>'93</sup>

Mary Ann P. Dorsey<sup>'68</sup>

Kirra N. Downing<sup>'01</sup>

Amber Driscoll<sup>S</sup>

Nani Dudoit<sup>'78, S</sup>

Georgette Dun<sup>'71</sup>

Lei-Ann M.<sup>'73</sup> & Ronald M. Durant

Lyla K. Eldredge<sup>'79, S</sup>

Mae Enfield<sup>S</sup>

Teru A. Enomoto-Heyl<sup>'79</sup>

Guy<sup>S</sup> & Julie Enriques

Carlton K. Fellezs<sup>'71</sup>

Maverick Fernandes<sup>S</sup>

Kenneth S. Fink<sup>S</sup>

Velma Fish<sup>'56</sup>

Adele S. Flores<sup>S</sup>

Erica H. Fontaine<sup>'86</sup>

Bradley & Jennifer Fortuna

Craig & Breanne Fortuna

Gaynell M. Fuchs<sup>S</sup>

Allan & Gail Fujimoto

Raynette P. Fukui<sup>'70</sup>

Raejean K. Gamiao<sup>'95</sup>

Danette<sup>'61, S</sup> & Billy Gardner

Kristy L. Genuario<sup>'95</sup>

Jennifer L. Gilchrist<sup>'91</sup>

Shellene H. Gilman<sup>'61</sup>

Iwalani S. Goldstein<sup>'75</sup>

Farrah-Marie K. Gomes<sup>'94</sup>

Ardis Gomes<sup>'70</sup>

Dr. Brian Goodyear

Dr. J. Noelani Goodyear-Kaopua<sup>'92</sup>

Barry Goren

Roger<sup>'61</sup> & Bernadette Grace

E. K. Hale<sup>'68</sup>

Darrell M. Hamamura<sup>S</sup>

Joseph A. Hamel<sup>S</sup>

Ormond Hammond

Moana M. Hanawahine<sup>'90, S</sup>

Marilyn P. Hasegawa<sup>'75</sup>

Lloyd & Michelle Hataishi

Floyd & Amelia<sup>'68</sup> Hew Sang

Tanya Hewahewa<sup>'86, S</sup>

Ann M. Higashi

Chris<sup>'63</sup> & Gwen Hilbus

Michelle L. Honda<sup>'70</sup>

Healani Huch<sup>'66</sup>

Dana K. Huddy<sup>S</sup>

Chlorie Igne<sup>S</sup>

Stacey A. Imamura<sup>S</sup>

Inter-Island Appraisal Co.

Kani Jahnke

Bernadette K. James<sup>'71</sup>

Jonathan D. Janus<sup>S</sup>

Thomas<sup>'85</sup> & Sarah Jenny

Alberta R. Jitchaku<sup>'66</sup>

Dr. Samuel Kamuela Ka'ahanui<sup>'67</sup>

Steven K. Kahili<sup>'76</sup>

Patti-Marie T. Kahoeapu<sup>'91</sup>

Ramona L. Kaiwi<sup>'78</sup>

Lana Smith Kalahiki<sup>'70</sup>

Kim L. Kalama<sup>'71</sup>

Samuel H.<sup>'71</sup> & Elizabeth Kalama

Mabelmae Kamahele<sup>'66</sup>

Alva K. Kamalani<sup>'70</sup>

Bernadette Kamana'o<sup>'73</sup>

Julie L. Kaomea<sup>'85</sup>

Michelle T. Kapule<sup>S</sup>

Muriel K. Kashiwa

William T. Kay, Jr.<sup>'68</sup>

Melissa L. Kehano<sup>'94, S</sup>

Ellie M. Keola<sup>'80</sup>

Theodore<sup>'70</sup> & Naomi Kesaji

Laurence M. Kiyohiro<sup>'75</sup>

Be-Jay Kodama

Noella J. K. Kong<sup>'70</sup>

Aaron Koseki, Jr.

Liula E. Kotaki<sup>'01</sup>

Serge Krivatsy<sup>S</sup>

Leonard F. Ke'ala Kwan, Jr.<sup>S</sup>

Curtis<sup>'70</sup> & Danette Lam Ho

Kyleena M. Lamadrid

Chahati L. F. Lancaster<sup>'06</sup>

Richard Laroche

Shirl Laroche

Jeanne Lau<sup>'78</sup>

Lawnie-Lyn U. Lau<sup>'89</sup>

Mike Miki & Mary Lau-Miki

Chris Laumauna<sup>'85, S</sup>

Herling R. Lee<sup>S</sup>

William<sup>'66</sup> & Joanne Lee

Keahi K. Leong<sup>'89</sup>

Diane Leslie<sup>'70</sup>

Donna M. Leu<sup>'76</sup>

Shannon P. Liili'i<sup>S</sup>

Pearl P. Ling<sup>'76</sup>

Arthur<sup>'57</sup> & Rhoda Loeb

Kiley<sup>'01</sup> & Shelby<sup>'01</sup> Loo

Julia N. Lowe<sup>'94, S</sup>

Jamie Lum<sup>'80</sup>





Mark E. MacInnis<sup>5</sup>  
 Sandra N. Mactagone<sup>70</sup>  
 Todd Madden  
 Miki Maeshiro<sup>5</sup>  
 JoAnna P. Mahi'ai<sup>01</sup>  
 Leah K. Mariani<sup>93, 5</sup>  
 Marina Florist Hawai'i Kai  
 Tamia M. McKeague<sup>5</sup>  
 Robert<sup>5</sup> & Shawna<sup>5</sup> Medeiros  
 Kaleialoha Medeiros<sup>5</sup>  
 Michael Medici  
 Linda N. Mitsunaga<sup>77</sup>  
 Jean Miyashiro-Saipaia<sup>5</sup> & l'a  
 Saipaia  
 Sharon Miyata<sup>5</sup>  
 Abraham K. Mokunui, Jr.<sup>82</sup>  
 Elizabeth Moore<sup>61</sup>  
 Don W.<sup>71</sup> & Debbie Morgan  
 Harolyn K.<sup>75</sup> & Richard M.  
 Morgenstein  
 Steven<sup>83</sup> & Carolyn Morikawa  
 Peter K. Morishige  
 Bricen Moritsugu<sup>5</sup>  
 Dayna C. Mortensen<sup>92</sup>  
 David A. Mortensen<sup>71</sup>  
 Michael K. Moses<sup>5</sup>  
 Lorna H. Motas<sup>71</sup>  
 Savanna N. Muravez<sup>03</sup>  
 Grace T. Murphy<sup>48</sup>  
 Kahele Nae'ole<sup>00</sup>  
 Erin Nānea Nahuina<sup>83, 5</sup>  
 Delmann P. Naipo<sup>86</sup>  
 Kehaulani Nakamoto<sup>70</sup>  
 Lucille H. Nakamura<sup>70</sup>  
 Luana S. Nakano<sup>66</sup>  
 Awapuhimele P. H. Napoleon-  
 O'Brien<sup>98, 5</sup>  
 Network for Good  
 Ryan Ng<sup>5</sup>  
 Courtney A. Nichols<sup>5</sup>  
 Leanne A. Nikaido<sup>5</sup>  
 Lois Nishikawa<sup>5</sup>  
 Linda I. Nishimura<sup>70</sup>  
 Claudine Nishimura<sup>91</sup>  
 Guy & Kirsten Nishimura  
 Kapohaulaokalanikiakia Noa<sup>5</sup>  
 Keola<sup>79</sup> & Elaine Nosaka  
 N. Cookie Numazu<sup>5</sup>  
 Ashley K. Obrey<sup>01, 5</sup>  
 Robert & Tara Oda  
 Leanne S. Okamoto<sup>5</sup>  
 Katrina-Ann R. Oliveira<sup>92</sup>  
 Michael Oliver<sup>5</sup>  
 Nathan O. Owens<sup>5</sup>  
 Brandie L. Oye<sup>91</sup>  
 Leland K. Ozawa  
 Joanne M. Pa'alani<sup>76</sup>  
 V.L. & Joslyn<sup>66</sup>  
 Toni L. Palermo<sup>70</sup>  
 Sarah Parsons

Katherine Lokelani Patrick<sup>72, 5</sup>  
 Naomi U. Patterson<sup>76</sup>  
 Melanie Yin Pecsok<sup>75</sup>  
 Sydney H. K. Perreira<sup>5</sup>  
 Ryan K. Pila<sup>06</sup>  
 Robin Prais<sup>5</sup>  
 Jamie K. Prem<sup>05</sup>  
 Stefan E. Press<sup>5</sup>  
 Victor Punua<sup>51</sup>  
 William Puou<sup>70</sup>  
 Emily Luana Pu'u<sup>94, 5</sup>  
 Kanoelani T. Pu'uohau<sup>05, 5</sup>  
 Sheleen E. Quisquirin<sup>95, 5</sup>  
 Treva K. Ranadey<sup>00</sup>  
 Dawn N. Rego-Yee<sup>96</sup>  
 Karen H. Richardson<sup>70</sup>  
 Jon Rickard<sup>63</sup>  
 Stason K. Rodrigues<sup>93</sup>  
 Michael Saines<sup>5</sup>  
 Gaynell K. Sala<sup>71, 5</sup>  
 Michele P. Sales<sup>93</sup>  
 Ken & Tina Salva Cruz  
 Faith K. Sandi<sup>70</sup>  
 Braeden K. Santiago<sup>11</sup>  
 Kathleen P. Schwartze<sup>81</sup>  
 Kelly Shere  
 Robbie Ann K. Shimose<sup>5</sup>  
 Kea Smith<sup>06</sup>  
 Billi M. Smith<sup>70</sup>  
 Peter<sup>71</sup> & Lorna<sup>70</sup> Soberano  
 Sheldon K. Sonido<sup>14</sup>  
 Kelsea K. Soon<sup>01</sup>  
 Francis<sup>66</sup> & Karen<sup>66</sup> Soon  
 Alexandre-Joan K. Souza<sup>09, 5</sup>  
 Peter Stack  
 Therese C. Staszko<sup>65</sup>  
 Melissa Stewart Rodrigues<sup>97, 5</sup>  
 Karen L. F. Stine<sup>75</sup>  
 Structural Pest Control, Inc.  
 Wessely I. Sur  
 Leiali'i Tagupa<sup>5</sup>  
 Brian K. Takemura<sup>5</sup>  
 Malcolm K. Tam<sup>61</sup>  
 Keani Taylor<sup>61</sup>  
 Elizabeth Terhorst  
 The Walt Disney Company  
 Foundation  
 Samuel Thomas<sup>5</sup>  
 Jefferson Tilley  
 TisBest Philanthropy  
 Robyn L. Titcomb<sup>91</sup>  
 Thomas M. Tom  
 Donald & Wainani<sup>87</sup> Tomich  
 Jodie Y. W. Toyota<sup>85, 5</sup>  
 Daniel<sup>05, 5</sup> & Kristin Truong  
 Amber<sup>96</sup> & Buddy Tupou  
 Colleen H. Uahinui<sup>76</sup>  
 Anne H. Uchida  
 Bradley J. Uy<sup>5</sup>  
 Phil K. Uyehara<sup>5</sup>

Kaulana<sup>5</sup> & Kanoë<sup>5</sup> Vares  
 Kawika A. Villa<sup>96</sup>  
 William<sup>71</sup> & Renae Villa<sup>72</sup>  
 Constance K. Warrington<sup>68</sup>  
 Bruce K. Watson<sup>92</sup>  
 John & Rose Mae<sup>66</sup> Watterson  
 Shelley H. Weatherwax<sup>88</sup>  
 Joyce P. Weiscopf<sup>66</sup>  
 Pastor Brian Welsh  
 Kalani H. Wilmington<sup>76</sup>  
 Kimberley C. Wilson<sup>5</sup>  
 Mr. & Mrs. Norman S. K. Wilson,  
 Jr.<sup>75</sup>  
 Shayne K. Wolfe<sup>14</sup>  
 Heather L. Wong<sup>88</sup>  
 Bernadine L. P. Wong<sup>81, 5</sup>  
 Lin H. Wong<sup>70</sup>  
 Summer L. P. Wong-Leong<sup>95</sup>  
 Jerrellyn L. Yamada<sup>64</sup>  
 Leslie L. Yap<sup>99</sup>  
 Joylynn I. L. H. Yarbrough<sup>86</sup>  
 Sienna Yoshida<sup>86</sup>  
 Thomas Y. Yoshida<sup>5</sup>  
 Scott K. Yoshihara  
 Lynda K. Yoshimura<sup>71</sup>  
 Sandra Young  
 Kelly W. Zane<sup>87</sup>

Melissa A. Beatty<sup>94</sup>  
 Noela Bishaw<sup>68</sup>  
 Brenda Blake-Maika<sup>67</sup> & Tau Maika  
 Cameron A. Brown  
 Regina J. Byrom<sup>5</sup>  
 Lance C. Cagasan<sup>5</sup>  
 Jocelyn J. Calma<sup>5</sup>  
 Pearl L. Cantrell<sup>76</sup>  
 Mina Casey-Pang<sup>5</sup>  
 Shaun Chillingworth<sup>99, 5</sup>  
 Vanessa Ching<sup>5</sup>  
 Jacob Chinn<sup>5</sup>  
 David<sup>66</sup> & Lurline<sup>65</sup> Choy  
 Marjorie Y. Choy  
 Lawrence & Diane<sup>5</sup> Chun  
 Ian N. Chun<sup>95</sup>  
 Carol Chung  
 George Churchill<sup>5</sup>  
 Danny S. Clark  
 Erin<sup>99, 5</sup> & Puanani<sup>01</sup> Cobb-Adams  
 Marian Cohen<sup>70</sup>  
 Kapaelani S. Comstock<sup>01, 5</sup>  
 Ellen M. Cordeiro<sup>5</sup>  
 Tim Cosgrove  
 Ms. Sara O. Cox<sup>01</sup>  
 Bonnivere J. Crabbe  
 Kelly I. Cua<sup>5</sup>  
 Kaulana E. K. Dameg<sup>97, 5</sup>  
 Tracy A. I. Damitio<sup>87</sup>  
 Kevin<sup>91</sup> & Twyla Dang  
 Marguerite H. Daysog<sup>5</sup>  
 Thomas & Desiree<sup>78, 5</sup> Del Rosario  
 Ka'ilialoha K. Dias-Blake<sup>15</sup>  
 Kumalie Dias-Blake<sup>19</sup>  
 J. Stacey Eaton<sup>5</sup>  
 Emerita Ellazar-Hernandez<sup>5</sup>  
 Shannon Endo<sup>5</sup>  
 Ms. Christine Enrico<sup>5</sup>  
 Priscilla Erece Veilleux<sup>5</sup>  
 Lana Gaye Ernesto<sup>63</sup>  
 Cynthia R. Fernandez<sup>5</sup>  
 Harry Fong, Jr.<sup>66</sup>  
 Michelle R. Fong Sioxson<sup>5</sup>  
 Joel & Carla Fortuna  
 Renee K. Franco<sup>91, 5</sup>  
 Doug & Karen<sup>78</sup> Gabbert  
 Puanani Mundon Gonsalves<sup>54</sup>  
 Goodfellow Bros, LLC.  
 Kulamanu M. L. Goodhue<sup>95</sup>  
 Po'okela Hanson<sup>01, 5</sup>  
 Niaulani S. Harris<sup>70</sup>  
 Ginete U. Hayes<sup>93</sup>  
 Charla-Mae Helm<sup>5</sup>  
 James & Barbara Herras  
 Lori M. Hieger<sup>89</sup>  
 Kehaulani Hikila<sup>5</sup>  
 La-Li Hing<sup>70</sup>  
 The Ho 'Ohana<sup>72</sup>  
 Eric<sup>70</sup> & Kathy Holck  
 Patricia Holmes<sup>5</sup>

## KA HUI KILIHUNE

\$1 - \$99

Anonymous (11)  
 Maurice Nakahara & Donna Aana-  
 Nakahara<sup>71</sup>  
 Charliissia K. Abihai<sup>92</sup>  
 Cecilia Adams  
 Wendilee L. Adkins<sup>83</sup>  
 Ulma F. Afoa<sup>5</sup>  
 Darren & Sonya<sup>5</sup> Ah Chong  
 Heather Ann W. Ahue<sup>76</sup>  
 Alma & Lory<sup>91, 5</sup> Aiwohi  
 Merlene M. Akau<sup>81</sup>  
 Kevin<sup>78</sup> & Lee Ann<sup>78</sup> Akiona  
 Burrelle H. Alamillo<sup>90</sup>  
 Ms. Leora K. Almstrom  
 Rosanne F. Anderson<sup>70</sup>  
 Edward<sup>94</sup> & Darice Apo<sup>94, 5</sup>  
 Cherlene L. Arakawa<sup>70</sup>  
 Jamie Ares  
 Erica Arikawa<sup>71</sup>  
 Yuuko Arikawa-Cross<sup>95</sup>  
 Shane M. Arquette<sup>5</sup>  
 Derrick<sup>5</sup> & Debbie Asing<sup>5</sup>  
 Nathan<sup>71</sup> & Cheryl Ann Au<sup>5</sup>  
 Ali'i Baoy  
 Angela P. Baptista<sup>5</sup>  
 Margaret Silva Barbazon<sup>70</sup>  
 Jennifer Baum<sup>01, 5</sup>





Richardson Smith & Linda<sup>66</sup> Holt-Smith  
 Ho'omana Foundation  
 Terry Hosaka  
 Connor K. Howick<sup>11</sup>  
 Ashley K. Iaea<sup>03, 5</sup>  
 Lauren Imada  
 Chad K. Imano  
 Roslyn D. Ioane  
 Willette K. Jackson<sup>70</sup>  
 Gary K. Jay<sup>73</sup>  
 Darrell<sup>5</sup> & Paula Johnson  
 Virginia Ka'ai  
 Rashanti K. Ka'awaloa<sup>5</sup>  
 Skye L. M. Ka'ina<sup>21, 5</sup>  
 Gail Kalbfleisch  
 Ryoko Kalua  
 LTC Peter Kama<sup>53</sup>  
 Keenan K. Kamae<sup>93</sup>  
 Kamehameha Schools Class of 1972  
 Kim K. Kana'iaupuni<sup>81, 5</sup>  
 Beatrice Y. Kane  
 Ruth T. Kaneko<sup>03</sup>  
 Kris K. Kaopuiki<sup>90</sup>  
 Debbie Kato<sup>5</sup>  
 Todd K. Kaulukukui<sup>95</sup>  
 Lorraine K. Keahi  
 Kahekili Kealoha  
 Tina Keane  
 Victoria L. Keith<sup>57</sup>  
 Genny K. P. W. Kelley<sup>5</sup>  
 Jodie<sup>5</sup> & Vince Kimura  
 King Solutions Inc.  
 Ernell L. Kinilau

Annabelle Knep  
 Sonya A. H. Kurisu<sup>5</sup>  
 Justin Lacche  
 Shannon E. K. L. Ladd<sup>90</sup>  
 Jennifer Y. I. Lam<sup>81</sup>  
 Paul Hughes & Barbara Lee  
 Megan M. Leong<sup>02, 5</sup>  
 Cody Lestelle  
 Jade Ling<sup>78</sup>  
 Gabi Lopez  
 Jason Louie  
 Tony<sup>58</sup> & Ann Lum  
 Kaylynd M. Lyman  
 David K. Mahoe<sup>06</sup>  
 Diedre T. Maika<sup>5</sup>  
 Darryl-Jean K. Mark<sup>69</sup>  
 Adrian L. Marquez<sup>96</sup>  
 Kristi L. Martinez<sup>5</sup>  
 Mahealani Matsuzaki<sup>86, 5</sup>  
 Carolyn Haunani Maunu-Hendrix<sup>70</sup>  
 Jean M. McClellan<sup>66</sup>  
 Alan & Alisha<sup>01</sup> Medeiros  
 Maile N. Miki<sup>09</sup>  
 Newton E. K. Miller<sup>73</sup>  
 Kayla E. Miller  
 Kelly-Jean Miral<sup>5</sup>  
 Daniel K. Yuen<sup>10</sup>  
 Wanda L. Moa<sup>70, 5</sup>  
 Lauren Morita  
 Melanie P. Mundon<sup>91, 5</sup>  
 Harry J. Murray<sup>56</sup>  
 Jessica A. Nagato<sup>5</sup>  
 Helen K. F. Nakata<sup>71</sup>  
 Howard<sup>61</sup> & Patricia Naleimaile

Sheryl Nālani A. Naluai<sup>5</sup>  
 Cassie N. Neubauer  
 Kānealii<sup>94, 5</sup> & Jacqueline Ng-Osorio<sup>94</sup>  
 Claire L. Niheu-Yong<sup>5</sup>  
 Samuel<sup>99, 5</sup> & Kainui Nihipali  
 Mae C. Nishimura<sup>5</sup>  
 Lihla Noori<sup>5</sup>  
 Jason H. Nurre<sup>97</sup>  
 Linda Oda  
 Leilani<sup>48</sup> Oliveira  
 Lucy E. Olmos<sup>70</sup>  
 Sabrina K. Ongos<sup>5</sup>  
 Amy T. Ono<sup>92</sup>  
 Leighton Pahukula, Jr.<sup>91</sup>  
 Star Nani Pai<sup>68</sup>  
 Lisa Pakele<sup>91</sup>  
 Roger D. Patao<sup>5</sup>  
 Desiree A. Pavao<sup>85, 5</sup>  
 Stacia Peleholani<sup>73</sup>  
 Dr. Laura Pendergrass  
 Tuyen Pham  
 James Phelps  
 Dolores M. Pinao  
 Joseph M. Plencner<sup>5</sup>  
 Vickie Punua-McGinnis<sup>78</sup>  
 Patti Rabacal<sup>5</sup>  
 Darcel Rankin Genobia  
 Susan Rearic  
 Ryder S. Richardson  
 Blanche L. Richmond<sup>77</sup>  
 Julie A. Riveira<sup>5</sup>  
 William & Kananionapua<sup>5</sup> Romena  
 Robert<sup>67</sup> & Tana<sup>5</sup> Rosehill  
 Moana Roy<sup>76</sup>

Kelii J. Ruth<sup>10</sup>  
 Shea & Rachelle<sup>94, 5</sup> Saffery  
 Ernest Saldua<sup>5</sup>  
 Jose A. Saucedo<sup>5</sup>  
 Aurencio Seguritan<sup>5</sup>  
 Wilhelmina Serrao<sup>5</sup>  
 Joseph & Yvonne<sup>75</sup> Shanks  
 Jodi Y. Shimabukuro<sup>5</sup>  
 Amy Shirk<sup>5</sup>  
 Nicole K. Shishido<sup>01</sup>  
 Andaline K. Simon<sup>75, 5</sup>  
 Michael<sup>67</sup> & Emily Sing  
 Anna M. Slagle<sup>85</sup>  
 Hau'oli M. Smith-Lopez<sup>98</sup>  
 Corey Sokoloff  
 Bowe M. Souza<sup>07, 5</sup>  
 Jacqueline R. Sovde<sup>5</sup>  
 Shannon M. Spencer<sup>5</sup>  
 Darmaine N. Stant<sup>5</sup>  
 The Stewart 'Ohana<sup>91</sup>  
 Jeannette M. T. Sunn<sup>98, 5</sup>  
 Michelle L. Swan<sup>5</sup>  
 Tony C. Tam<sup>5</sup>  
 Alana K. M. Taniguchi<sup>01</sup>  
 Beth Y. Taone<sup>5</sup>  
 Kekoa A. Taparra<sup>08</sup>  
 Target Corporation  
 Ynes L. Tascott<sup>56</sup>  
 R. Malia Taum-Deenik  
 Linda Thompson<sup>5</sup>  
 Cory B. Tom<sup>5</sup>  
 Tomczyk 'Ohana  
 Lan H. Tu<sup>5</sup>  
 Beryl K. Tyau<sup>73</sup>  
 Shane Ueki  
 Carol<sup>5</sup> & Frank Valant  
 Shane K. Valdez<sup>03, 5</sup>  
 Lisa Van Kirk<sup>5</sup>  
 Alike L. Victor<sup>91</sup>  
 Diane C. Victor<sup>5</sup>  
 Danette H. Victorino<sup>68</sup>  
 Timmy<sup>96</sup> & Myra Wailehua  
 Scott Watanabe<sup>5</sup>  
 Tory T. K. Watanabe<sup>11, 5</sup>  
 Keri Ann K. Watson<sup>93</sup>  
 Kimo T. Weaver<sup>5</sup>  
 Deborah-Jean H. Wentzel<sup>85, 5</sup>  
 Johnnie F. Wilson<sup>5</sup>  
 Henry Kalani Wong<sup>74, 5</sup>  
 Sheryl Wong  
 Eugene & JoAnn<sup>71, 5</sup> Kam  
 Natasha Wright  
 Karen Yasuhara<sup>5</sup>  
 Letitia U. Yee<sup>61</sup>  
 Kelly Yogi<sup>5</sup>  
 Stephen K. Young<sup>82</sup>  
 Daniel K. Yuen<sup>99</sup>  
 Shirley A. Yuen

# I mua nā haumāna

## SCHOLARSHIP RECIPIENT SPOTLIGHT



**Jax Awong** '21  
Honolulu Community College

Edwin P. Murray Scholarship  
Ka 'Ōlelo Hawai'i o Kamehameha Scholarship

---

"I will be studying aeronautical maintenance technology. I enjoy working with my hands and believe that a trade seems to be the best route for me. I hope to make my family proud, become a positive contributor to my 'ohana, and a good example to other young Hawaiians as Pauahi wanted her pua o Kamehameha to be."

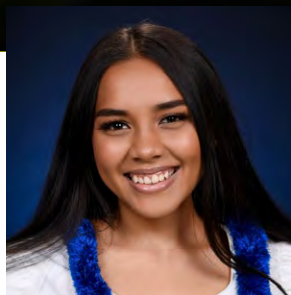


**Cheyenne Bajo** '21  
New York University

Kamehameha Schools Imua 77 Scholarship  
Virginia Aulani Rowan Scholarship

---

"I will concentrate on nursing, entrepreneurship, political science and creative writing. I plan on coming back to Hawai'i to work as an endocrinology nurse practitioner, to aid the community of underprivileged keiki who have been diagnosed with diabetes. Mahalo nui loa no nā mea a pau."



**Ewalea Dameg** '21  
Pacific University

Kamehameha Schools Hawai'i - Parent Teacher Organization Scholarship  
Frank and Ruth Midkiff Scholarship  
Mary Atherton Richards Scholarship  
Tauati 'Ohana Scholarship

---

"I hope to major in psychology and sociology and go into law. I want to be able to give people who feel as though they don't have a voice the opportunity to be heard and I believe that being a lawyer will allow me to do that. Mahalo for the opportunity to follow my dreams and take that knowledge back to benefit Hawai'i."



**Makoa Inciong** '21  
California Institute of Technology

Douglas K.K. Chung Memorial Scholarship  
John A. and Georgia J. Meyer Scholarship

---

"I am incredibly grateful for your generosity that enables me to attend my dream school, to major in mechanical engineering, and to one day work as an aerospace engineer. I will strive to be an excellent representative of Hawai'i and Kamehameha Schools, and continue my pursuit of knowledge."





**Mahina Kaomea '21**  
**Stanford University**

DeWitt Wallace Scholarship  
Kamehameha Schools Class of 1963 Scholarship  
Mary Atherton Richards Scholarship  
Pauahi Scholars

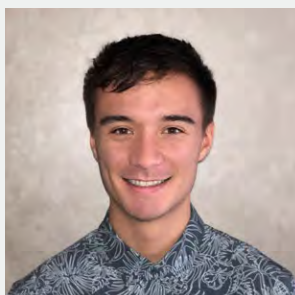
"I am thankful for your thoughtfulness in uplifting generations of young k  naka students like myself. With the support of your generous scholarship funds, I will study indigenous education and environmental science with the hope of one day starting a community-based, food-sovereignty, and sustainability school in my '  ina."



**Haily Nascimento '21**  
**University of Hawai'i at M  noa**

Hawaii Lodging and Tourism Association Pouhana Hokele Scholarship  
John A. and Georgia J. Meyer Scholarship  
Mary Atherton Richards Scholarship

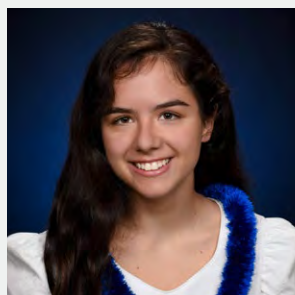
"I will be attending the University of Hawai'i for a degree in hospitality/tourism management and sustainable development, through which I hope to provide a better system in the tourism industry. I also plan to contribute to the perpetuation of hula, '  lelo Hawai'i, and mele. Mahalo piha!"



**Joshua Parker '21**  
**Harvard University**

Denis Wong & Associates Scholarship  
DeWitt Wallace Scholarship  
Kamehameha Schools Class of 1960 Scholarship  
Kamehameha Schools Class of 1962 Scholarship  
Native Hawaiian Chamber of Commerce Scholarship  
Theodore Vierra Scholarship

"With your support, I'm able to attend my dream school and pursue a STEM degree in computer science, economics, and environmental engineering. My dream is to become a tech entrepreneur in the field of clean energy and found a socially responsible tech company in Hawai'i. I am so thankful for your generosity."



**Sophia Perry '21**  
**Northwestern University**

Kamehameha Schools Class of 1961 Scholarship  
Kamehameha Schools Hawai'i - Parent Teacher Organization Scholarship  
Nanea Scholarship

"Mahalo for investing in my future! I will be studying media communications and journalism, learning all I can about using media to promote collaboration and problem-solving. Your generosity will allow me to gain the knowledge, skills, and experiences necessary to serve my community as a journalist."



**Raven Sylva**  
**Chaminade University of Honolulu**

Goldman Sachs/Matsuo Takabuki Commemorative Scholarship  
Kamehameha Schools Class of 1991 Scholarship  
Kamehameha Schools Class of 2005 Scholarship  
Villa 'Ohana Ho'iho'i Scholarship  
Yasuko Mitsuyasu Master of Accounting Scholarship

"Mahalo donors, I am able to obtain my MBA in accounting, and using my future expertise as a CPA, I want to help benefit underserved populations and be a role model to future generations there. These scholarships will play a role in the ripple effects that better various communities in Hawai'i."



**David Visperas '21**  
**Stanford University**

DeWitt Wallace Scholarship  
Warren Nakupuna Ah Loo Memorial Scholarship

"With your support, I'm able to attend the college of my dreams. I intend to major in data science and use my mathematical skills to create algorithms that can derive the best way for students to learn and revolutionize Hawai'i's education system. You have changed my future for the better, and I am so, so grateful."



## MEANINGFUL IMPACT

# 2020-2021 Pauahi Foundation Scholarship Recipients

**1982 Green Machine Scholarship**  
Kamehalani Ortiz

**2010 Legends Scholarship**  
Daphne Fox<sup>'05</sup>  
Maya Rosof<sup>'19</sup>

**2017 Great Whites Named Endowment Scholarship**  
Cade Kane<sup>'21</sup>

**Admiral Kihune Scholarship**  
Sharlei Iranon<sup>'21</sup>

**Ali'i Chang Scholarship**  
Mathew Dye

**Allen A. Bailey Scholarship**  
David James  
Kiana Kauwe<sup>'03</sup>  
Shelley Weatherwax<sup>'88</sup>

**Amona and Suzel Ho STEM Leaders Scholarship**  
Rachael Meisner<sup>'07</sup>

**Anne H. Myers Scholarship**  
Ashley Lee<sup>'16</sup>

**Ashley Meleana Joy Scholarship**  
Maveric Abella<sup>'15</sup>

**Bernice Leinani Kuakini Ahlo and Henry Keanu Ahlo Scholarship**  
Celeste Cravalho

**Blaise A. Kepo'okelaokakai Baldonado Scholarship**  
Alya-Joy Kanehailua<sup>'17</sup>

**Blossom Mossman Nary Scholarship**  
Makakoa Pelletier-Finau<sup>'21</sup>

**Bruce T. and Jackie Mahi Erickson Scholarship**  
Alya-Joy Kanehailua<sup>'17</sup>

**Charles "Chuck", Craig and Fred Rudolph Named Endowment Scholarship**  
Spencer Waite

**Charles Cockett 'Ohana Scholarship**  
Gus Cobb-Adams

**Charles P.M.K Burrows Hui Lama Science Scholarship**  
Dakota Kaupu<sup>'21</sup>

**Charles S. Iwata, Jr. Memorial Annual Scholarship**  
Alisha Kaluhiokalani

**Choy-Kee 'Ohana Scholarship**  
Joby Lum<sup>'20</sup>

**Christine Alicata/Daisy Bell Memorial Scholarship**  
Randall Ching<sup>'21</sup>

**Class of 2020 Aloha Aina Scholarship**  
Zachary Lorenzo<sup>'20</sup>

**Col. Curtis Kekoa (KS '40) and Nenita Maldonado Kekoa Scholarship**  
Riku Iwai-King<sup>'21</sup>

**Dan and Rachel Mahi Educational Scholarship**  
Wailana Ulukita

**Daniel Kahikina and Millie Akaka Scholarship**  
Taylor Takahashi<sup>'20</sup>

**David A. Mortensen KS '71 D.A.M Scholarship**  
Sabbath Seibert<sup>'21</sup>

**David and Julia Desha Scholarship**  
Jada Chang  
Pakelakahiki Ka'au'a<sup>'21</sup>  
Joelene Kuaana<sup>'14</sup>  
Makana Melchor<sup>'21</sup>  
Naleikaehukai Molitau<sup>'21</sup>  
Onipaa Pung<sup>'21</sup>  
Bruce Torres Fischer  
Dylan Valentine<sup>'20</sup>  
Natalie Walsh  
Kekailani Wong Yuen<sup>'16</sup>

**David Kalani Goldstein, KS '70 Scholarship**  
Helena Marie Bakutis-Kekaula

**David Lorch Music Scholarship**  
Angela Chock<sup>'21</sup>

**Denis Wong & Associates Scholarship**  
Katia Barricklow  
Kanoelani Dodd  
Samuel Kippen<sup>'07</sup>  
Joshua Parker<sup>'21</sup>

**Desha-Mulholland Scholarship**  
Kanani Araki<sup>'21</sup>  
Bailey Ventura<sup>'21</sup>

**DeWitt Wallace Scholarship**  
Mahina Amoy<sup>'21</sup>  
Mahina Kaomea<sup>'21</sup>  
Joshua Parker<sup>'21</sup>  
David Visperas<sup>'21</sup>

**Dolly and Ross Wert Named Endowment Scholarship**  
Christian Arakawa

**Dorothy Martin Scholarship**  
Joy Nu'uhiwa<sup>'21</sup>

**Douglas and Sandra Akina Scholarship**  
Bailey Ventura<sup>'21</sup>

**Douglas K.K. Chung Memorial Scholarship**  
Mason Carvalho<sup>'21</sup>  
Makoa Inciong<sup>'21</sup>

**Dr. Lori Ann Kim Scholarship**  
Tylee Calicdan<sup>'21</sup>

**Dr. Pauline Frederick Scholarship**  
Lola Duropan<sup>'21</sup>

**Dwayne "Nakila" Steele Scholarship**  
Heuaolu Sai-Dudoit

**Edward Lapsley Ho'opa'a Mau Scholarship**  
Stephan Callion-Nizo<sup>'21</sup>





**Edwin Mahiai Copp Beamer Scholarship**

Angela Chock<sup>21</sup>

**Edwin P. Murray Scholarship**

Jax Awong<sup>21</sup>

Ioane Boshard<sup>21</sup>

**Elaine "Dollie" Mortensen KS'71 Kaumuali'i Malama 'Aina Scholarship**

Kaianne Feurtado

**Eli D. Panee Sr. and Aileen E. Panee I Mua Scholarship**

Ashley Lee<sup>16</sup>

**Elizabeth Kuulei Bell Molokai Education Scholarship**

Shannon Kaahanui

**Eric N. Jacobsen Memorial Scholarship**

Ross Ledda

**Flik Independent Schools Dining Scholarship**

Stephan Callion-Nizo<sup>21</sup>

Randall Ching<sup>21</sup>

**Floro and McCarthy Family Big Blue and White K Scholarship**

Tihani Jayme Kalaaukahui

Renee Lockwood

**Francelia Stillwell Sportsmanship Scholarship**

Talia Suzuki<sup>21</sup>

**Frank & Ruth Midkiff Scholarship**

Ewalea Dameg<sup>21</sup>

Brock Malani<sup>21</sup>

Tess Monden<sup>21</sup>

Alexandra Perry<sup>21</sup>

Toby Williams<sup>21</sup>

Joshua Worth<sup>21</sup>

**Gail and Allan Fujimoto Scholarship**

India Kawelolani Ching

**George Hi'ilani Mills Scholarship**

Kainoa Calistro-Allen<sup>12</sup>

Tatiana De La Cruz<sup>16</sup>

Natalie Lau

Alissa Maree Nakamura

Trisha Nobriga

Richard Rista<sup>15</sup>

Madison Williams<sup>15</sup>

**George T. Kanalu Young Memorial Scholarship**

Tiana Pereira<sup>17</sup>

**Gladys E. and Clifford T.F. Chun Scholarship**

Breanna Marie Taguchi

Carina Tanaka<sup>19</sup>

**Gladys Kamakakuokalani 'Ainoa Brandt Scholarship**

Ramzen Coakley

Kamaleikuhalia Krug

Shanamae Melton

Tenille Nagareda<sup>17</sup>

Patricia Plunkett

Tiare-Jennings Vaughan-Darval

Kiera-Lynn Viela<sup>17</sup>

Aonani Vitch-Fernandez

**Goldman Sachs/Matsuo Takabuki Commemorative Scholarship**

Jennifer Marie Carter

Christina Kaleiwahea

Kihaakeanu Sai<sup>12</sup>

Raven Sylva

**Harold Turney & Dorothy Gillett Memorial Scholarship**

Angela Chock<sup>21</sup>

Kylie Kwak<sup>21</sup>

**Hartwell Hewahewaokalani Lee Loy Sr. Scholarship**

Melody Cosma-Gonsalves<sup>93</sup>

**Hawai'i Independent Energy Scholarship**

Aaron Castillo

**Hawaii Lodging & Tourism Association Don Ho Legacy Named Endowment Scholarship**

Brennan Mendez<sup>19</sup>

**Hawaii Lodging and Tourism Association Pouhanea Hokele Scholarship**

Bryden Ka'auwai

Haily Nascimento<sup>21</sup>

**Helen Desha Beamer Scholarship**

Brooke Mcclaverty-Shigaki<sup>21</sup>

**Henry Laumaewa & Clara Kapeka Kanamu Memorial Named Endowment Scholarship**

Sidney Spencer<sup>21</sup>

**Henry Lee Scholarship**

Kala'i Kanno<sup>21</sup>

**Herbert Kealohe Keppeler Scholarship**

Malulani Paiste<sup>21</sup>

**Holomua Scholarship**

Tiare-Jennings Vaughan-Darval

**Homer David Kahilialau and Thelma Mabara Burge, Sr. Scholarship**

Taecia Akana<sup>17</sup>

Aiponokamoku Valente

**Ho'omāka'ika'i Named Endowment Scholarship**

Theo Baker

**I Mua Mālama JROTC Ka'awaloa Takemoto Scholarship**

Ron Jacob Lardizabal

Michaela Patdu<sup>21</sup>

**Irmgard Farden Aluli Scholarship**

Heuaolu Sai-Dudoit

**Isaac and Mary Harbottle Scholarship**

Gus Cobb-Adams

**Iwalani Carpenter Sowa Scholarship**

Matthew Mendonza<sup>06</sup>

**Jalene Kanani Bell 'Ohana Scholarship**

Kilihea Kanekoa

**James Bacon, KS '71 "Little Bacon Urban Achievers" Scholarship**

Isaiah Kaohe

**Jared Keanu Sylva Alvarez Named Endowment Scholarship**

Taylor Arashiro-Mamuad<sup>21</sup>

**Johansen 'Ohana Scholarship**

Kalaimaikala Aukai<sup>16</sup>

**John A. and Georgia J. Meyer Scholarship**

Amber Ikalani<sup>21</sup>

Makoa Inciong<sup>21</sup>

Kia'i Keone<sup>21</sup>

Haily Nascimento<sup>21</sup>

Cade Trujillo<sup>21</sup>

**John and Reiko Kuga Phillip Scholarship**

Kylie Kalauli

**Johnny Pineapple Scholarship**

Theo Baker

**Joseph A. Sowa Scholarship**

Taecia Akana<sup>17</sup>

**Joseph David Ahuna Scholarship**

Sage Iona

Kassie Tarpley

**Joseph Nawahi Scholarship**

Ryse Akiu<sup>14</sup>

Alakai Iaea-Russell

Kamaleikuhalia Krug

**Ka 'Olelo Hawai'i o Kamehameha Scholarship**

Jax Awong<sup>21</sup>

**Ka Papa o Kanaono-Kumaono Class of 66 Scholarship**

Sydney Decosta<sup>20</sup>

Sean Lau

**Kahalekuiinaihe Scholarship**

Kiera-Lynn Viela<sup>17</sup>





**Kahu Wendell B.K. Davis and  
Mama Kahu Maria K.K. Davis  
Aloha Ke Akua Scholarship**  
Siera Morales<sup>21</sup>

**Kalino Foundation Scholarship**  
Haley Nakawatase<sup>18</sup>  
Keahilele Reyes

**Kamehameha Schools Alumni  
Association – Maui Region  
Scholarship**  
Kahealani Garcia  
Mikiala Maynard

**Kamehameha Schools Alumni  
Association – O’ahu Region  
Scholarship**  
Courtney-Ann Ah Lo Keohulua<sup>05</sup>  
Sabbath Seibert<sup>21</sup>

**Kamehameha Schools Alumni  
Association West Hawai’i Region  
Scholarship**  
Pascal Cabuzel

**Kamehameha Schools  
Association of Maui Scholarship**  
Hannah Aiwohi<sup>20</sup>  
Manuel Castro  
Kahealani Garcia  
Mikiala Maynard

**Kamehameha Schools  
Association of Teachers and  
Parents Moloka’i “Elua”  
Scholarship**  
Kade Apuna<sup>18</sup>  
Shannon Kaahanui

**Kamehameha Schools Class of  
1950 Scholarship**  
Koloikeao Anthony<sup>19</sup>

**Kamehameha Schools Class  
of 1952 “Na Hoaloha O  
Kamehameha” Scholarship**  
Mathew Dye  
Trisha Nobriga

**Kamehameha Schools Class of  
1958 Na Mea Waiwai a Pauahi  
Scholarship**  
Kaimana Bunker

**Kamehameha Schools Class of  
1960 Scholarship**  
Tatiana De La Cruz<sup>16</sup>  
Amber Ikalani<sup>21</sup>  
Haley Opiopio  
Joshua Parker<sup>21</sup>

**Kamehameha Schools Class of  
1961 Scholarship**  
Ocean Akau<sup>21</sup>  
Sophia Perry<sup>21</sup>

**Kamehameha Schools Class of  
1962 Scholarship**  
Haley Nakamura  
Joshua Parker<sup>21</sup>

**Kamehameha Schools Class of  
1963 Scholarship**  
Mahina Kaomea<sup>21</sup>  
Kamaleikuhalia Krug

**Kamehameha Schools Class of  
1965 Scholarship**  
Makanilealea Davis

**Kamehameha Schools Class of  
1967 Ka Lei O Kaiona Scholarship**  
Isaiah Kaohe  
Isaac Nahakuelua

**Kamehameha Schools Class  
of 1968 “Ka Poli O Kaiona”  
Scholarship**  
Kuuleihua Funn  
Kekailani Wong Yuen<sup>16</sup>

**Kamehameha Schools Class of  
1970 Scholarship**  
Charlynn Adversalo  
Taylor Demotta  
Keolalani Larson  
Kapri Tulang-De Silva<sup>18</sup>

**Kamehameha Schools Class of  
1971 “Get Chance” Scholarship**  
Sabbath Seibert<sup>21</sup>

**Kamehameha Schools Class of  
1972 Scholarship**  
Taylor Chee<sup>13</sup>  
Delsha Clift Mahi

**Kamehameha Schools Class  
of 1973 “Proud to be ’73”  
Scholarship**  
Leiohu Chun  
Kyla Zimmermann

**Kamehameha Schools Class of  
1974 Scholarship**  
Katia Barricklow  
Noah Furtado  
Alakai laea-Russell

**Kamehameha Schools Class of  
1975 Scholarship**  
Delsha Clift Mahi  
Kamalu Kaawa  
Liana Kanno  
Kenneth Niheu

**Kamehameha Schools Class  
of 1976 Kealahapau’ole  
Scholarship**  
Nalehuaopuna Donlin

**Kamehameha Schools Class of  
1979 Ho’okupono Scholarship**  
Quinn Akina<sup>09</sup>

**Kamehameha Schools Class of  
1980 Scholarship**  
Krystel Mata

**Kamehameha Schools Class of  
1983 Scholarship**  
Kylee-Ray Tactacan

**Kamehameha Schools Class of  
1984 He Waiwai Nui Ka Lokahi  
Scholarship**  
Kyle Moriguchi<sup>18</sup>

**Kamehameha Schools Class of  
1991 Scholarship**  
Raven Sylva

**Kamehameha Schools Class of  
1993 Na Lei Kukui Scholarship**  
Devan Wilhelm

**Kamehameha Schools Class  
of 1994 Named Endowment  
Scholarship**  
Terran Kaleiwahea<sup>10</sup>

**Kamehameha Schools Class  
of 1995 Ka Ua Kipuupuu  
Scholarship**  
Alisha Kaluhiokalani

**Kamehameha Schools Class  
of 1996 Named Endowment  
Scholarship**  
Bronson Azama

**Kamehameha Schools Class of  
1997 Scholarship**  
Taylor Moniz<sup>21</sup>

**Kamehameha Schools Class of  
2001 Scholarship**  
Tihani Jayme Kalaaaukahi  
Aldomonick Samuseva



**Kamehameha Schools  
Association of Kaua’i  
Scholarship**  
Logan Ayau<sup>21</sup>  
Makani Brun<sup>21</sup>  
Makena Buhk<sup>21</sup>  
Mason Carvalho<sup>21</sup>  
Mason Doo<sup>21</sup>  
Taylor Nishimoto<sup>21</sup>  
Keliko Pa<sup>21</sup>  
Jeslie Pavao<sup>21</sup>  
Alexandra Perry<sup>21</sup>  
Deven Tapucol<sup>21</sup>

**Kamehameha Schools Class  
of 1954 Na Kanalimakumaha  
Scholarship**  
Kainoa McCauley  
Nevan Watanabe<sup>17</sup>

**Kamehameha Schools Class of  
1956 Scholarship**  
Keolalani Larson  
Malulani Paiste<sup>21</sup>

**Kamehameha Schools Class of  
1957 Scholarship**  
Ridge Ka’auwai<sup>21</sup>  
Kaci Stokes<sup>21</sup>





**Kamehameha Schools Class of 2003 Na Pua 'Akala a Pauahi Scholarship**

Mikiala Maynard

**Kamehameha Schools Class of 2005 Scholarship**

Raven Sylva

**Kamehameha Schools Hawai'i - Parent Teacher Organization Scholarship**

Elysa Abellera<sup>'21</sup>  
Dillon Ah Chong<sup>'21</sup>  
Ocean Akau<sup>'21</sup>  
Kanani Araki<sup>'21</sup>  
Xander Calicdan<sup>'21</sup>  
Candace Cavaco<sup>'21</sup>  
Justin Chow<sup>'21</sup>  
Ryenne Cordeiro<sup>'21</sup>  
Bethany Correia<sup>'21</sup>  
Ewalea Dameg<sup>'21</sup>  
Raynn Dangaran<sup>'21</sup>  
Dayanee Faust<sup>'21</sup>  
Destiny Hirae<sup>'21</sup>  
Christian Hironaga<sup>'21</sup>  
Brock Malani<sup>'21</sup>  
Angela Martin<sup>'21</sup>  
Makakoa Martinez<sup>'21</sup>  
Siera Morales<sup>'21</sup>  
Misha Namohala<sup>'21</sup>  
Osiana Pacheco<sup>'21</sup>  
Janelle Chloe Pakele<sup>'21</sup>  
Keli'inowelo Perry<sup>'21</sup>  
Sophia Perry<sup>'21</sup>  
Dylan Rosehill<sup>'21</sup>  
Caley Tadeo-Etrata<sup>'21</sup>

**Kamehameha Schools Imua 77 Scholarship**

Cheyenne Bajo<sup>'21</sup>

**Kamehameha Schools Kapālama Association of Teachers and Parents Ho'ihi Aku, Ho'ihi Mai Scholarship**

Jireh Amina<sup>'21</sup>  
Kekuawela Tauala<sup>'21</sup>

**Kamehameha Schools Kapālama Class of 2006 Named Endowment Scholarship**

Kylie Watson<sup>'10</sup>

**Kamehameha Schools Maui Parent Teacher Student Organization 'A'apueo Scholarship**

Hannah Aiwahi<sup>'20</sup>  
Sheldon Dudoit-Caban<sup>'21</sup>  
Brycen Hanada<sup>'21</sup>



**Kamehameha Schools Na Hoaloha Class of 1986 Named Endowment Scholarship**

Kauaolilikoikalani Moses

**Keaholoa Investment Finance Scholarship**

Nainoa Watanabe<sup>'21</sup>

**Kekuna'ai'ali'i Scholarship**

Noah Furtado  
Kiana Kauwe<sup>'03</sup>

**KGMB/KHON Video Production Scholarship**

Hezekiah Kapua'ala<sup>'21</sup>  
Tahina Tomaszek<sup>'21</sup>

**Kunuiakea Scholarship**

Tehani Baculpo  
Zion Basque<sup>'17</sup>  
Lanson Kupau<sup>'14</sup>  
Zachary Lorenzo<sup>'20</sup>  
Steven Mau<sup>'16</sup>  
Eryn Nagaishi  
Kassie Tarpley

**Lance (KS '83) & Andrea Hussey (KS '83) Leong Scholarship**

Elliott Markell<sup>'17</sup>

**Lee Ann DeLima Scholarship**

Pearl Bachiller<sup>'21</sup>  
Sheldon Dudoit-Caban<sup>'21</sup>

**Lee Thomas Pacific Island Scholarship**

Haley Lyman<sup>'21</sup>

**Lena Kaulumau Machado Haku Mele Fund**

Angela Chock<sup>'21</sup>

**Lokomaika'i Scholarship**

Joseph Jimenez

**M. Kimo Wong KS'71 and Shelly Wong and Noe Noe Wong-Wilson KS'68 'Ohana Scholarship**

Tuupuaalamakahonua  
Helekahi  
Kenneth Niheu

**M.E. Bacon KS'72 Uncle Herb Kupuna Lehua Lee-Loy Weatherwax Aloha 'Āina Scholarship**

Kapuaoluolumaikalani  
Peleiholani-Blankenfeld<sup>'20</sup>

**Mahi'ai Scholarship**

Kaianne Feurtado

**Makaloe Scholarship-UG**

Keahi Kahui  
Alexis Keo-Long<sup>'21</sup>  
Makakoa Martinez<sup>'21</sup>  
Stephanie Scoville<sup>'16</sup>  
Natalie Walsh

**Makuakane Inspirational Educator Scholarship**

Leiohu Chun  
Melody Cosma-Gonsalves<sup>'93</sup>  
Nicholas Lum<sup>'12</sup>  
Kayla Ontai

**Mary Atherton Richards Scholarship**

Elysa Abellera<sup>'21</sup>  
Ocean Akau<sup>'21</sup>  
Mahina Amoy<sup>'21</sup>  
Pearl Bachiller<sup>'21</sup>  
Tylee Calicdan<sup>'21</sup>  
Candace Cavaco<sup>'21</sup>  
Bethany Correia<sup>'21</sup>  
Savannah Rose Dagupion<sup>'21</sup>  
Ewalea Dameg<sup>'21</sup>  
Raynn Dangaran<sup>'21</sup>  
Leah Delos Santos<sup>'21</sup>  
Caitlyn Duarte<sup>'21</sup>  
Dayanee Faust<sup>'21</sup>  
Jordynn Haumea-Thronas<sup>'21</sup>  
Lauren Kalama<sup>'21</sup>  
Mahina Kaomea<sup>'21</sup>  
Aleah Kay<sup>'21</sup>  
Mila Kehano<sup>'21</sup>  
Abigail Macalintal<sup>'21</sup>  
Tess Monden<sup>'21</sup>  
Taylor Moniz<sup>'21</sup>  
Malina Mossman<sup>'21</sup>  
Haily Nascimento<sup>'21</sup>  
Nalea Nitta<sup>'21</sup>  
Malulani Paiste<sup>'21</sup>  
Alexandra Perry<sup>'21</sup>  
Kaci Stokes<sup>'21</sup>  
Sofia Stupplebeen<sup>'21</sup>  
Caley Tadeo-Etrata<sup>'21</sup>  
Bailey Ventura<sup>'21</sup>

**Michael "Mikey" Miyake Scholarship**

Danielle Ann Bonilla<sup>'21</sup>  
Serena Lovell<sup>'21</sup>

**Mr. John Riggle Scholarship**

Duke Tatom<sup>'21</sup>

**Myron & Laura Thompson Scholarship**

Chloe Ah Nee<sup>'21</sup>  
Ramzen Coakley

**Na Pua Mae'ole o Kamehameha Class of 1953 Scholarship**

Hezekiah Kapua'ala<sup>'21</sup>

**Nanea Scholarship**

Sophia Perry<sup>'21</sup>  
Kanoë Wilson<sup>'91</sup>

**Native Hawaiian Chamber of Commerce Scholarship**

Joshua Parker<sup>'21</sup>  
Mackenzie Plunkett<sup>'19</sup>  
Jordynneelynsly Stevens  
Jeremy Yee<sup>'20</sup>



**Odell Hastings Slagel Named Endowment Scholarship**  
Kealakai Matsumoto

**Paiea Kane/Wahine Scholarship**  
Osiana Pacheco<sup>21</sup>  
Keli'inowelo Perry<sup>21</sup>

**Patrick L. Hiram - John S. Freitas Scholarship**  
Kanoelani Dodd

**Pauahi Scholars**  
Keana Amian<sup>21</sup>  
Candace Cavaco<sup>21</sup>  
Savannah Rose Dagupion<sup>21</sup>  
Karl Hanson<sup>21</sup>  
Skye Kaina<sup>21</sup>  
Teani Kaluhikaua<sup>21</sup>  
Mahina Kaomea<sup>21</sup>  
Hezekiah Kapua'ala<sup>21</sup>  
Carlos Masuko<sup>21</sup>  
Osiana Pacheco<sup>21</sup>  
Keli'inowelo Perry<sup>21</sup>  
Brynn Rodrigues<sup>21</sup>  
Sofia Stupplebeen<sup>21</sup>  
Teija Tuitele<sup>21</sup>  
Connor Viela<sup>21</sup>  
Nainoa Watanabe<sup>21</sup>  
Joshua Worth<sup>21</sup>

**Pauahi Scholars - Liko Lehua**  
Xander Calicdan<sup>21</sup>  
Angela Martin<sup>21</sup>

**Pauahi Scholarship**  
Kawaiolaakealii Kapuni<sup>21</sup>

**Paul Pua'a 'Ohana, Paul Moses Murray & Malia Murray Grant**  
Makanilealea Davis  
Ale'a Vendiola<sup>20</sup>

**Pa'upena Named Endowment Scholarship**  
Mila Kehano<sup>21</sup>

**Pono & Louise Beamer Scholarship**  
Angela Chock<sup>21</sup>  
Kylie Kwak<sup>21</sup>

**Pop Diamond Scholarship**  
Kaya Wong-Mcgee<sup>21</sup>

**Pu'uwai Hau Kila Scholarship**  
Keahilele Reyes

**Randy Wayne Ahuna Scholarship**  
Skye Apao

**Rebecca Lamahilani Haalou Medeiros Scholarship**  
Kealakai Matsumoto

**Reuben Lee Kwai Brandt Scholarship**  
Cade Kane<sup>21</sup>

**Richard Lyman, Jr. Memorial Scholarship**  
Bailey-Ann Lee  
Tyler Hayashida<sup>21</sup>

**Richard Marks Named Endowment Scholarship**  
Celeste Cravalho

**Roy L. Cachola Scholarship**  
Isaiah Lorenzo<sup>21</sup>

**Sanborn 'Ohana Ho'omau Scholarship**  
Chaz Gouveia

**Sarah Keli'ilolena Lum Konia Nakoa Scholarship**  
Aiponokamoku Valente

**Stanley & Janet Zisk Scholarship**  
Sydney Decosta<sup>20</sup>  
Shyla-Ann Keaunui  
Jena Shimotsu

**Stanley and Besse Fortuna Memorial Scholarship**  
Ocean Akau<sup>21</sup>

**T.C. Yim Named Endowment Scholarship**  
Nalehuaopuna Donlin

**Tauati 'Ohana Scholarship**  
Ewalea Dameg<sup>21</sup>  
Brock Malani<sup>21</sup>

**Tayler Nanea Pangan-Fergerstrom Memorial Scholarship**  
Savannah Cerezo<sup>21</sup>

**Tennyson Keolalani Tom Scholarship**  
Alana Chang<sup>21</sup>  
Kainani Wagner<sup>21</sup>

**The McClellan Family Scholarship**  
Mahina Amoy<sup>21</sup>

**Theodore Richards Scholarship**  
Kylie Kwak<sup>21</sup>  
Siera Morales<sup>21</sup>

**Theodore Vierra Scholarship**  
Joshua Parker<sup>21</sup>

**Trudi and Hiram de Fries Educational Scholarship**  
Kainoa Calistro-Allen<sup>12</sup>

**U'ilani Stender Scholarship**  
Kuuleihua Funn  
Keolalani Larson  
Kapri Tulang-De Silva<sup>18</sup>  
Ashley Wong

**Ula Baker Sheecha Scholarship**  
Kiponaonalani Dougher<sup>21</sup>  
Tiari Faagata<sup>18</sup>  
Jillian Ikehara<sup>19</sup>  
William Thompson<sup>20</sup>  
Kalākea Yamaguchi<sup>21</sup>

**USS Kamehameha Scholarship**  
Gabriella Kanoa  
Ross Ledda

**Vaughn G.A. Vasconcellos KS '71 Scholarship**  
Ryse Akiu<sup>14</sup>  
Joshua Worth<sup>21</sup>

**Villa 'Ohana Ho'iho'i Scholarship**  
Tehani Buchanan  
Raven Sylva

**Violet K. '32 & Henry T. Hughes, Jr. Scholarship**  
Gus Cobb-Adams

**Virginia Aulani Rowan Scholarship**  
Cheyenne Bajo<sup>21</sup>

**Waipa Nishimura Memorial Scholarship**  
Haylee Hulihee<sup>21</sup>  
Kalākea Yamaguchi<sup>21</sup>

**Wallace & Barbara Ka'awaloa Scholarship**  
Jakob Loscalzo<sup>21</sup>  
Joy Nu'uhiwa<sup>21</sup>

**Warren Nakupuna Ah Loo Memorial Scholarship**  
David Visperas<sup>21</sup>  
Joshua Worth<sup>21</sup>

**William K. and Julia T. Kapololu Named Endowment Scholarship**  
Taisamasama Kaiminaauao-Eteuati<sup>20</sup>

**William S. Richardson Commemorative Scholarship**  
Hiilei Casco<sup>14</sup>  
Tehani Louis-Perkins<sup>14</sup>  
Tiana Pereira<sup>17</sup>

**Winona Beamer Scholarship**  
Brooke Mcclaverty-Shigaki<sup>21</sup>

**Yasuko Mitsuyasu Master of Accounting Scholarship**  
Cole Kamisugi<sup>17</sup>  
Raven Sylva

**Yin Ohana Named Endowment Scholarship**  
Kolten Gusman

**Zillah Young Memorial Scholarship**  
Angela Chock<sup>21</sup>







# MA WA KA LU



Kamehameha  
Schools®

[ksbe.edu](http://ksbe.edu)