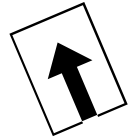


Map Showing Portion of
Subject Parcel (4) 1-2-002:001
DR 21-76 Petition for
Designation of IAL by
Kekaha Agricultural Association



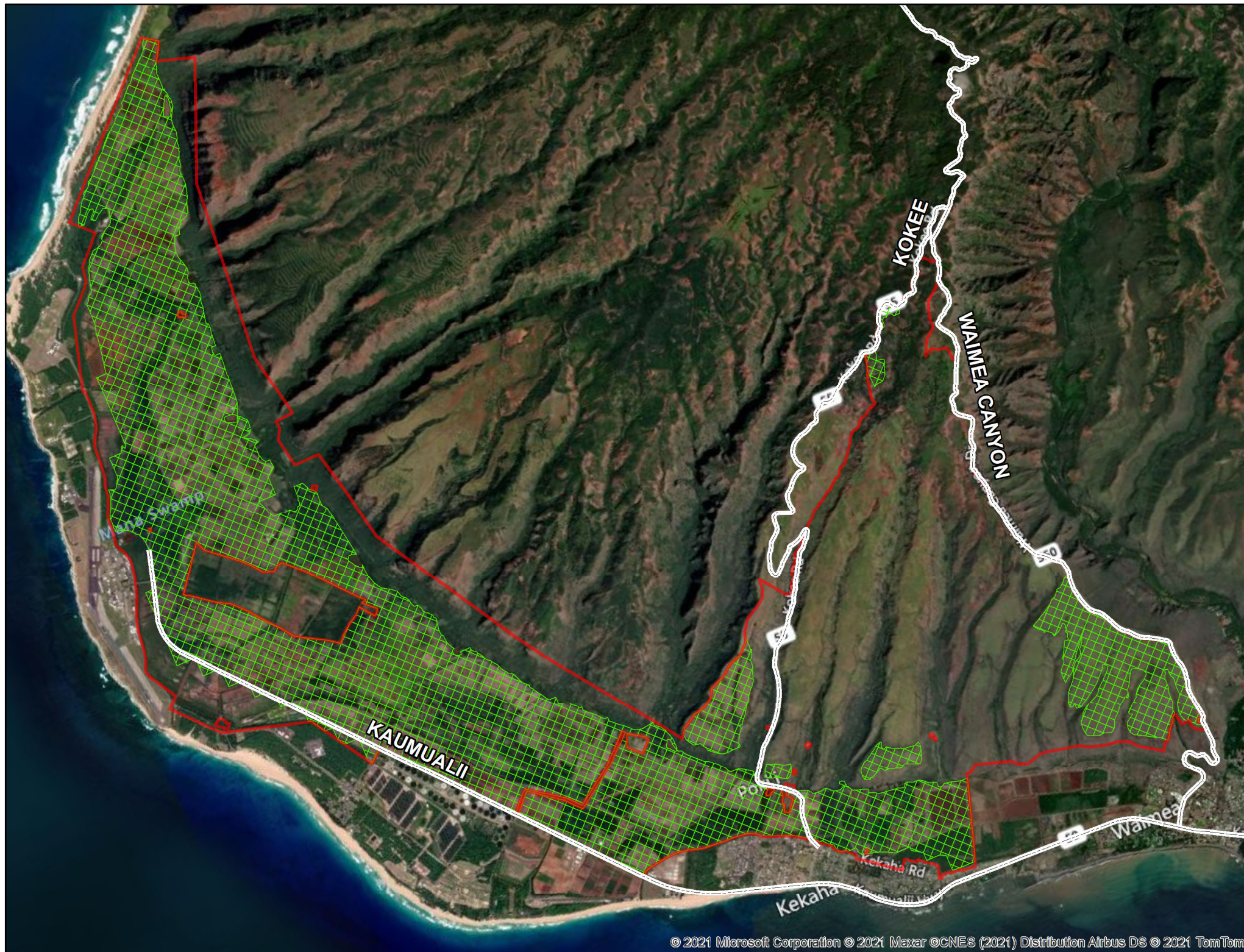
0 1 2 Miles

Legend

- State Highway (2015 CoK)
- Lands that meet the criteria for IAL*
(approx 6,440 acres)
- Portion of (4) 1-2-002:001 (2021 CoK)
12,123 acres



*Agricultural Lands which meet the eight criteria of Hawaii Revised Statutes Part III Important Agricultural Lands. Refer to the Kaua'i IAL Study (August 2015) for more information about the development of scoring mechanism and geographic data.



Petition Area

County of Kauai Zoning & Land Area

Zone	Acres	% of Total
Agriculture	8,343	~67%
Open	4,031	~32%
Conservation	16	<1%
Industrial-General	5	<1%
Residential-4	1	<1%
Residential-6	0.5	<1%
Residential-10	0.5	<1%
Residential-10/ST-P	0.1	<1%
No Zoning	5	<1%

12,402
Total Acres



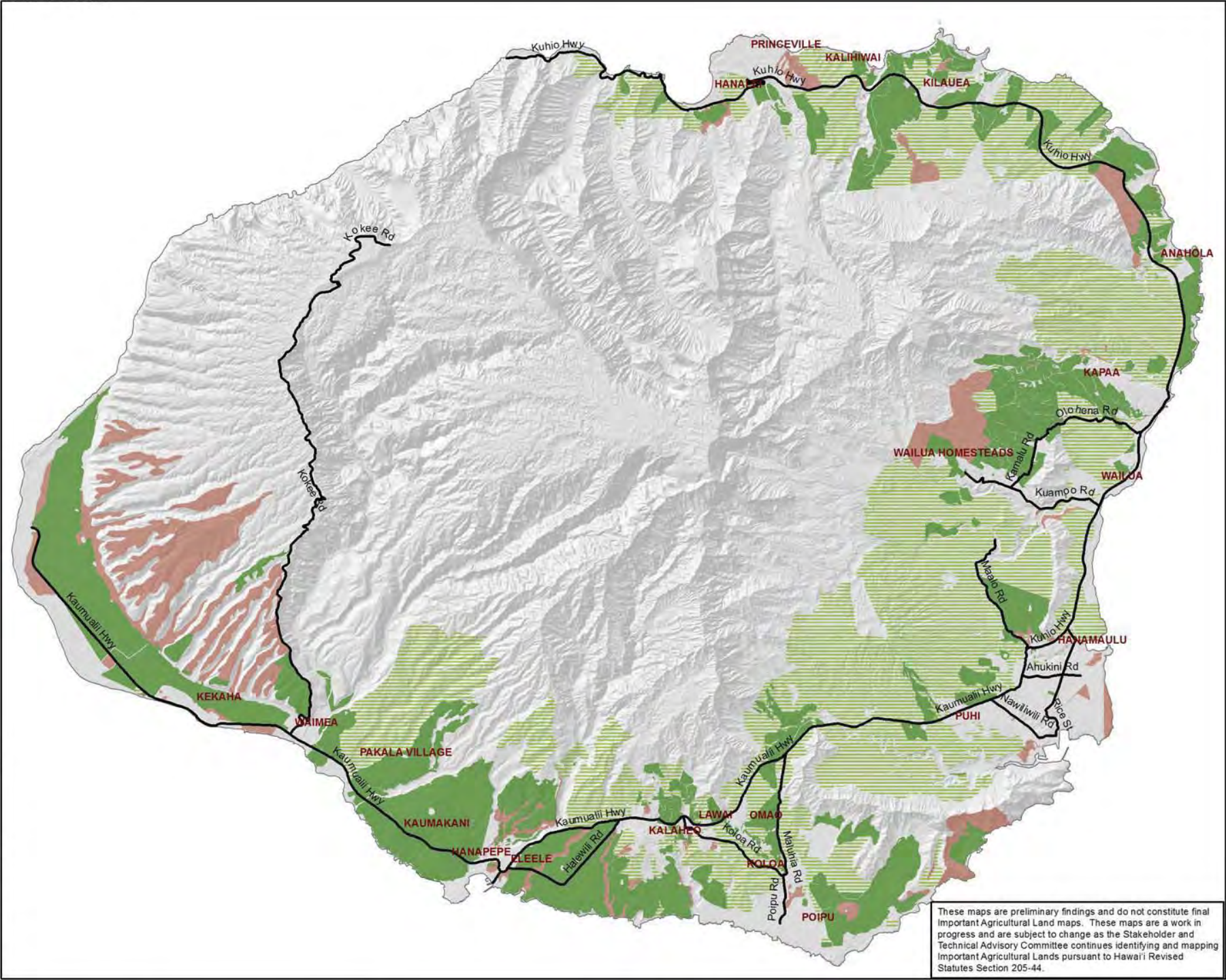
Legend

- Major roads
- Cultivated land (1)
- Grazing land (0.78)
- Idle land (0)

- Sources:**
- STAC meeting #2 mapping exercise (Feb 2010)
 - Individual meetings with STAC members (August 2010)
 - Kauai Farm Service Agency, USDA (June & Aug 2010)
 - Grove Farm, Kauai (July 2010)
 - Regional meetings (Nov 2010)
 - QuickBird aerial image (2004) interpretation

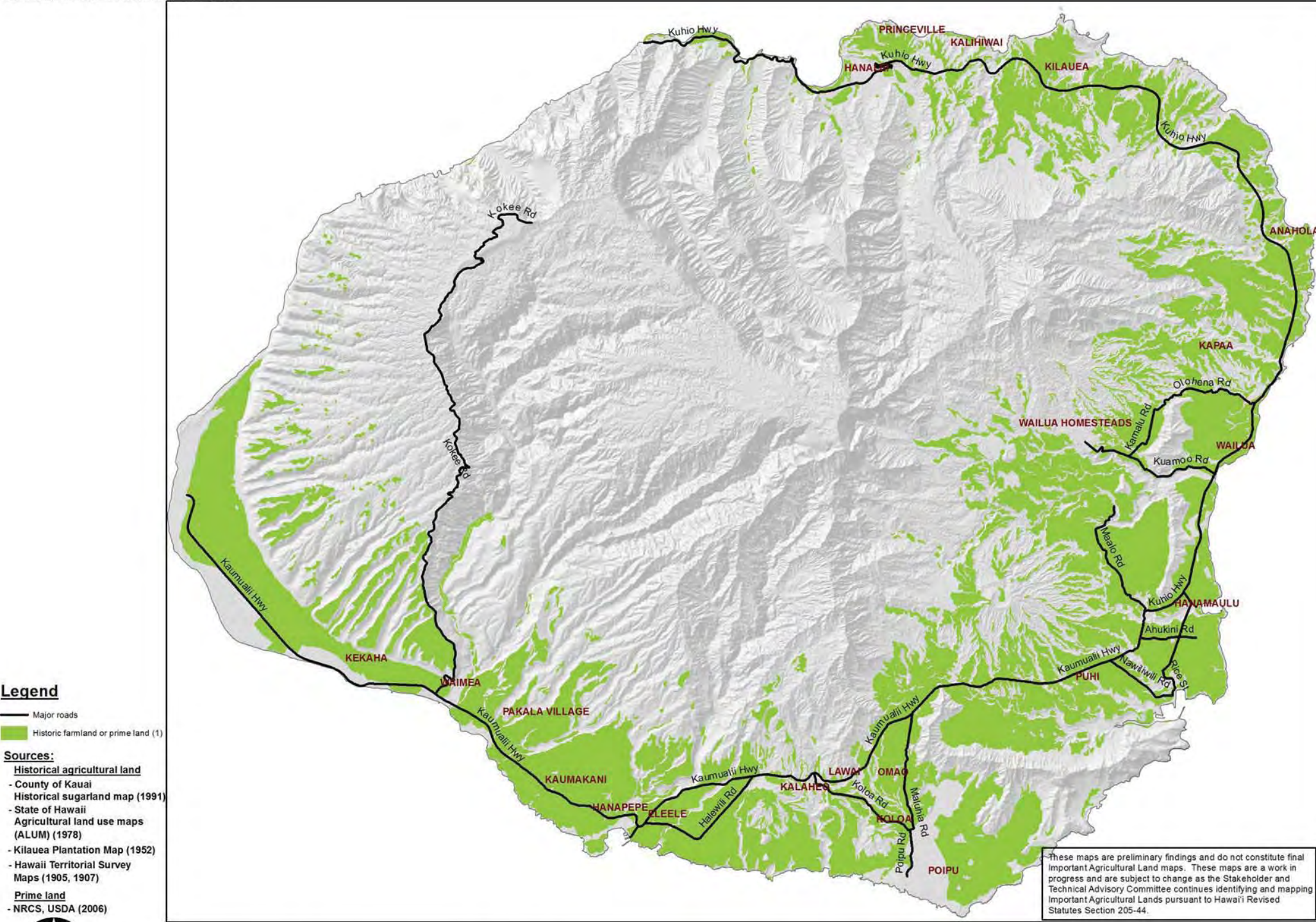


0 2.5 5 10 Miles

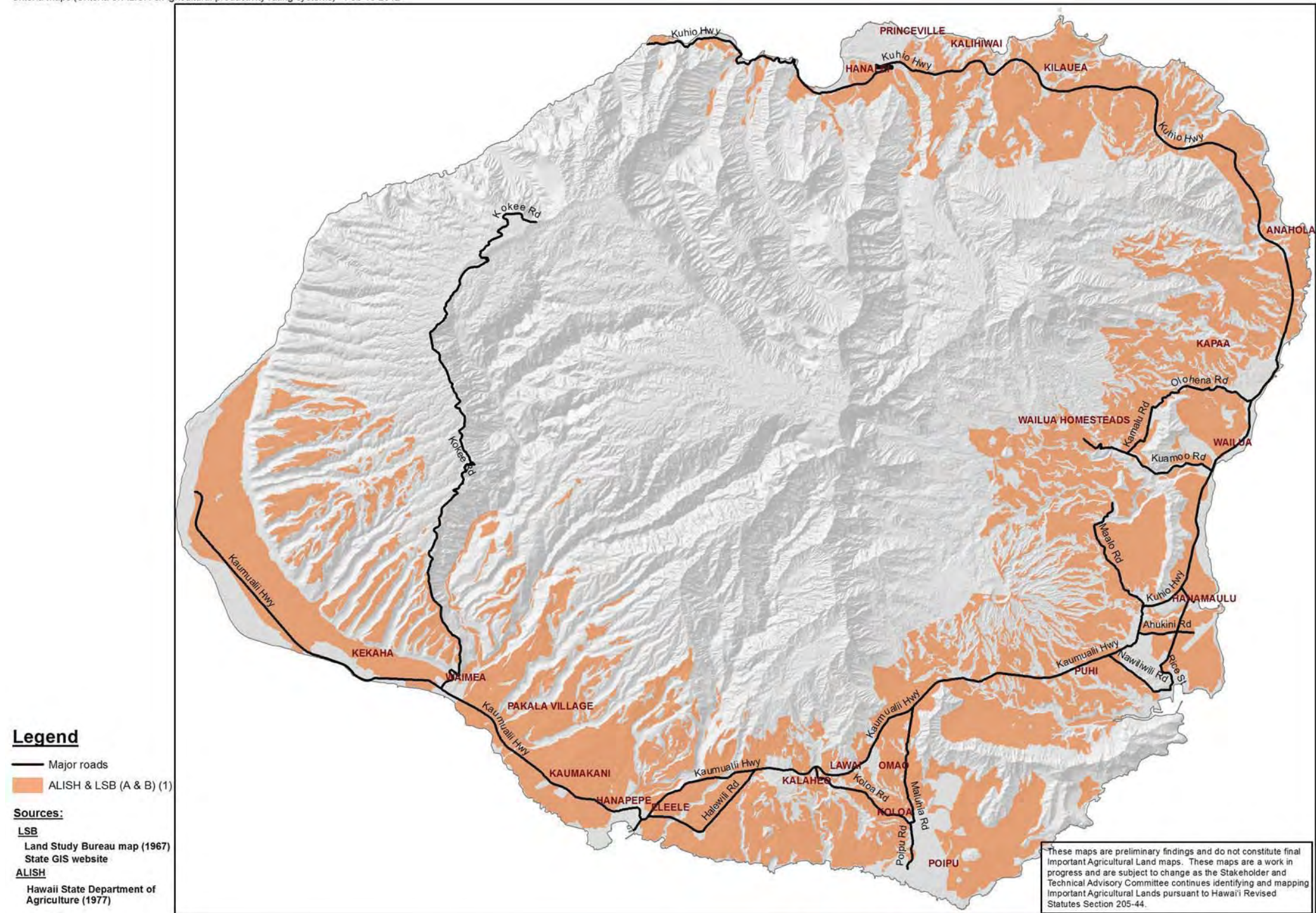


These maps are preliminary findings and do not constitute final Important Agricultural Land maps. These maps are a work in progress and are subject to change as the Stakeholder and Technical Advisory Committee continues identifying and mapping Important Agricultural Lands pursuant to Hawaii Revised Statutes Section 205-44.

Criterion 1: Currently in agriculture



Criterion 2: Soil quality



Criterion 3: Identified by ALISH or other rating systems

Legend

- Major roads
- Native Hawaiian (1)
- Unique (0.53)
- Historic taro field (0.55)

Sources:

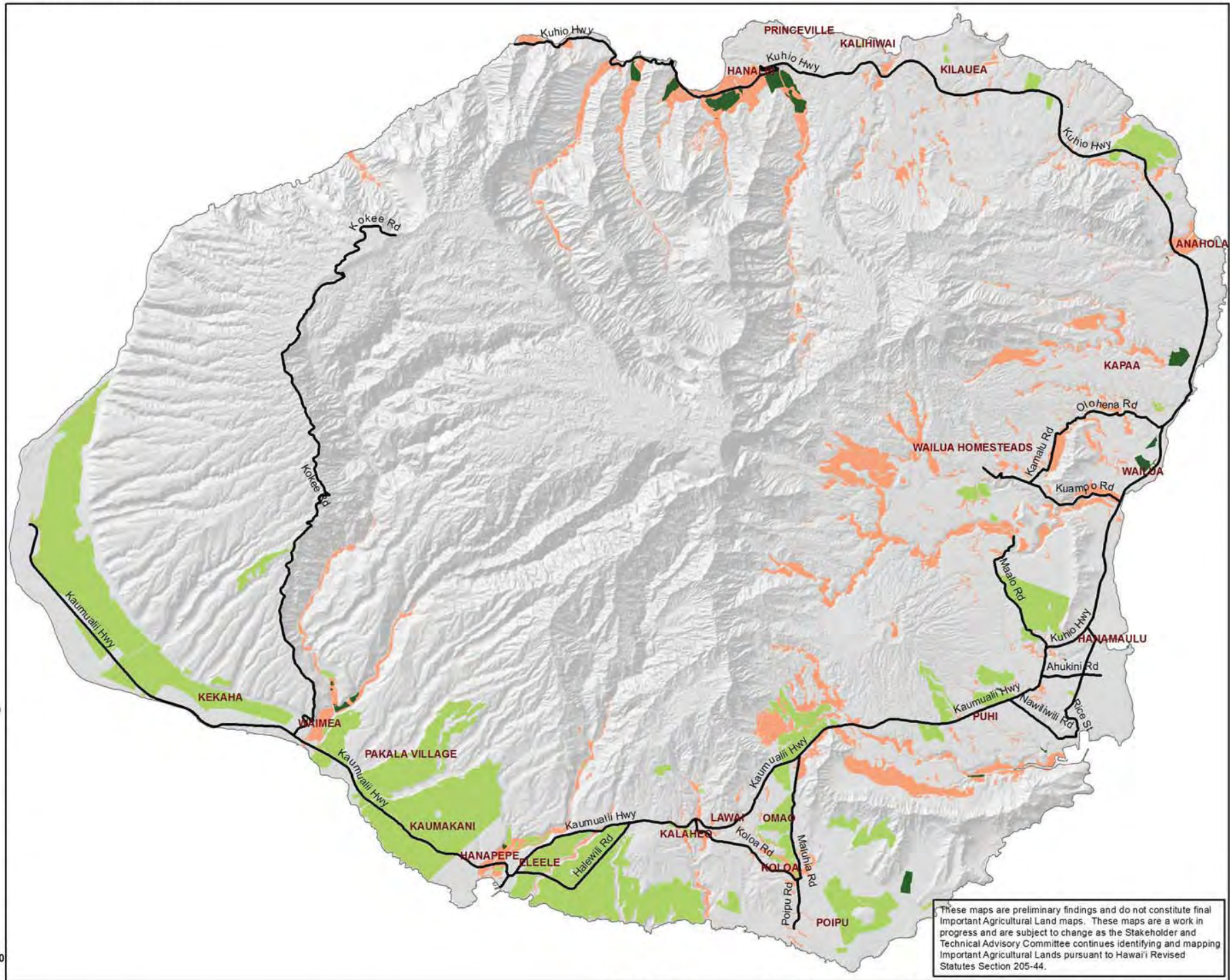
- STAC meeting #2 mapping exercise (Feb 2010)
- Kauai Farm Service Agency, USDA (June & Aug 2010)
- Grove Farm, Kauai (July 2010)
- Individual meetings with STAC members (August 2010)
- Regional meetings (Nov 2010)
- QuickBird aerial image (2004) interpretation

Predictive model:

Ledefoged, T.N. et al. (2009). Opportunities and constraints for intensive agriculture in the Hawaiian archipelago prior to European contact. J. of Archaeological Science (09) 1-10



0 2.5 5 10 Miles



These maps are preliminary findings and do not constitute final Important Agricultural Land maps. These maps are a work in progress and are subject to change as the Stakeholder and Technical Advisory Committee continues identifying and mapping Important Agricultural Lands pursuant to Hawaii Revised Statutes Section 205-44.

Criterion 4: Agricultural use is Native Hawaiian or Unique

Legend

— Major roads

Water sources

- Reservoir or ditch (1)
- Stream, well and rain (0.74)
- Stream & well/rain (0.7)
- Well and rain (0.6)
- Stream only (0.4)
- Rain only (0.37)
- Well only (0.34)

Sources:

Rainfall:

Hawaii Rainfall Atlas (1986),
DLNR

Ditches:

- Division of Aquatic Resources,
DLNR (2004)
- Ditch status updates:
 - + East Kauai Water Users'
Cooperative (July 2010)
 - + Private Landowners (July 2010)
 - + Agricultural Water Use and
Development Plan (2003),
Hawaii DOA
 - + Regional meetings,
(November 2010)

Reservoirs:

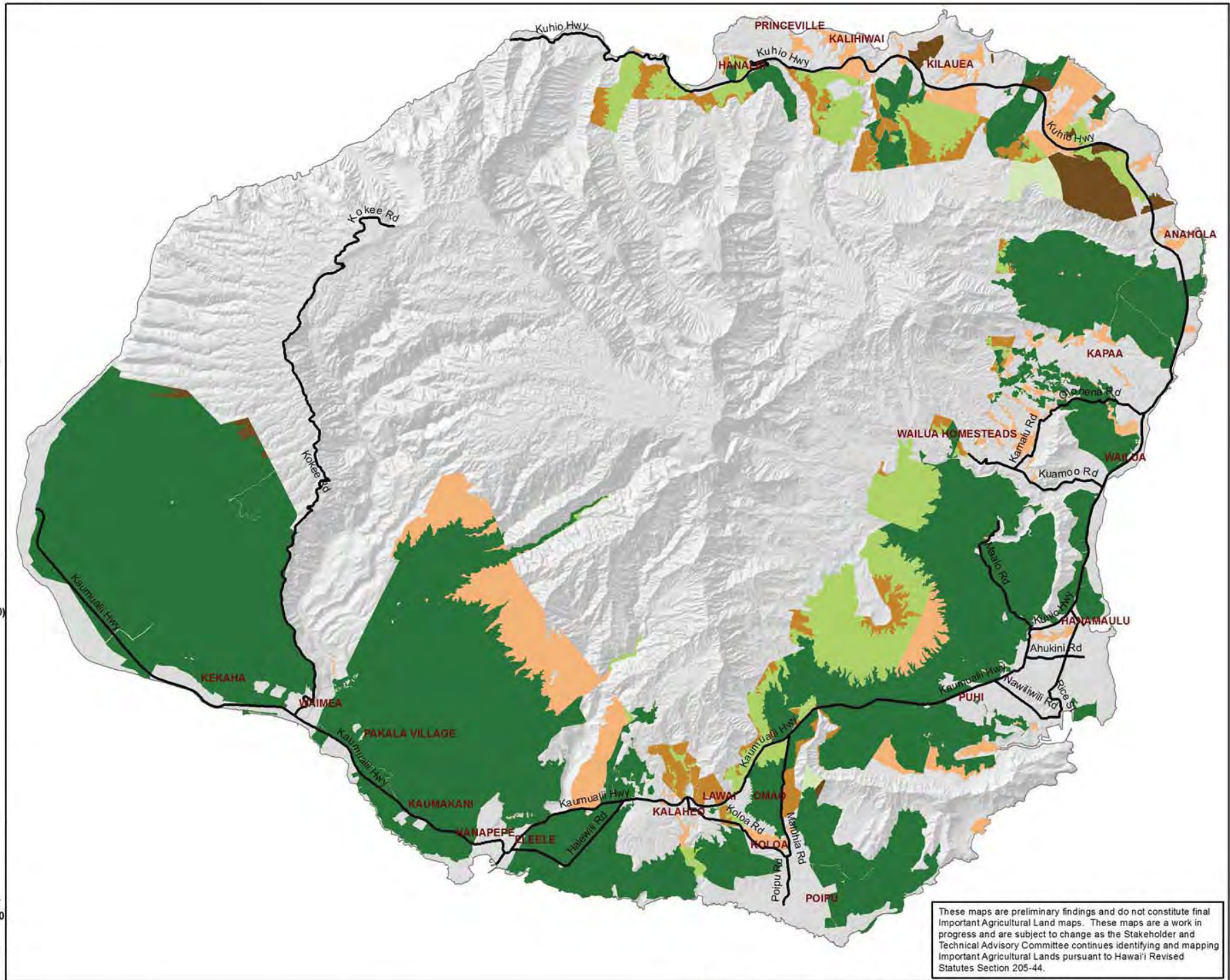
- County of Kauai,
Planning Department
- Reservoir Status Database,
DLNR (September 2010)
- Regional meetings,
(November 2010)
- Aerial image interpretation
(1967, 2005, 2010)

Streams:

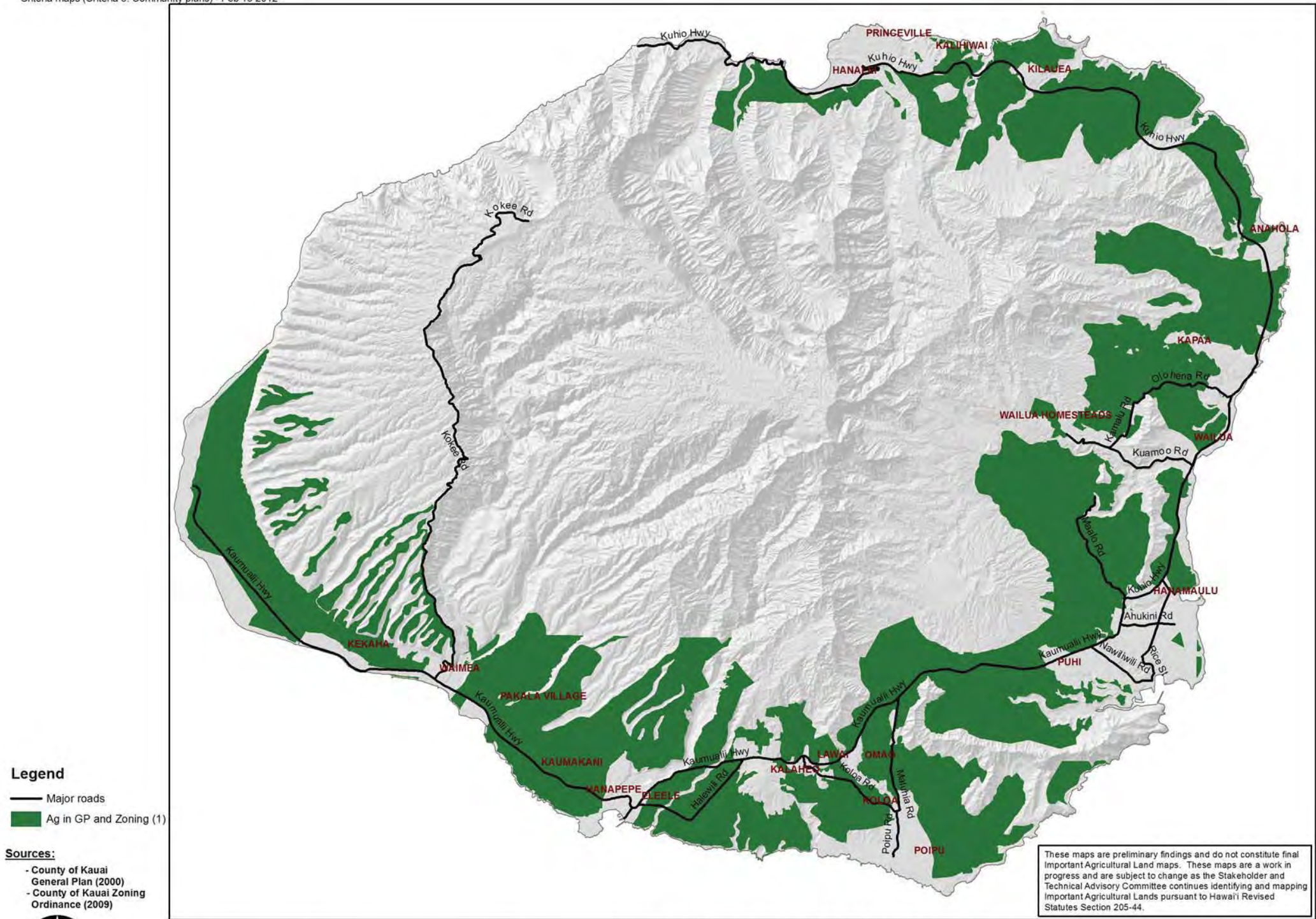
- Division of Aquatic Resources,
DLNR (Aug 2004)
- Predictive model:
Ledefoged, T.N. et al. (2009).
Opportunities and constraints
for intensive agriculture
in the Hawaiian archipelago
prior to European contact. J. of
Archaeological Science (09) 1-10

Wells:

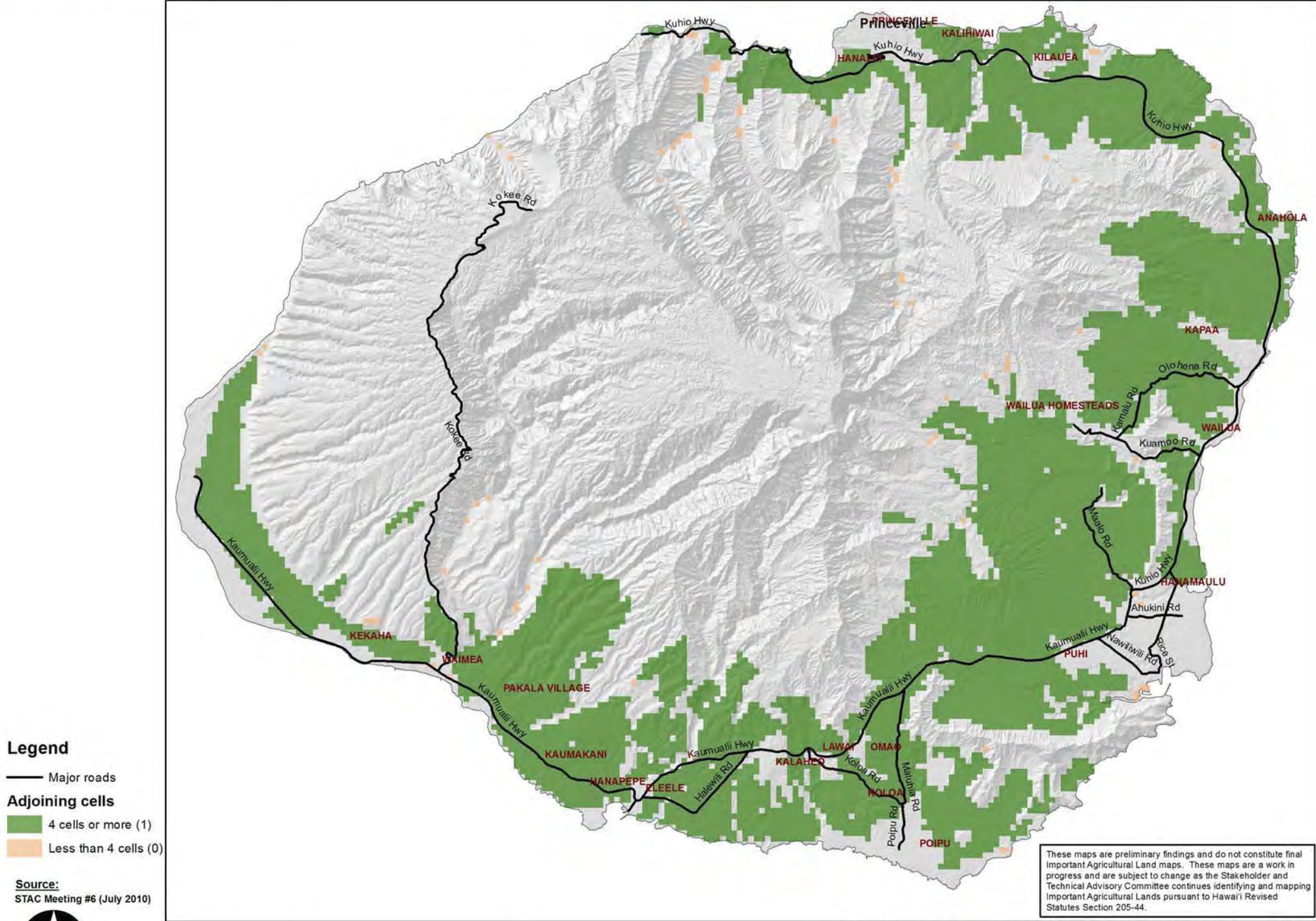
Commission of Water Resource
Management, DLNR (Aug 2010)



**Criterion 5: Water is sufficient for
agriculture**



Criterion 6: IAL designation is consistent with county plans



Criterion 7: Contributes to the critical landmass

Legend

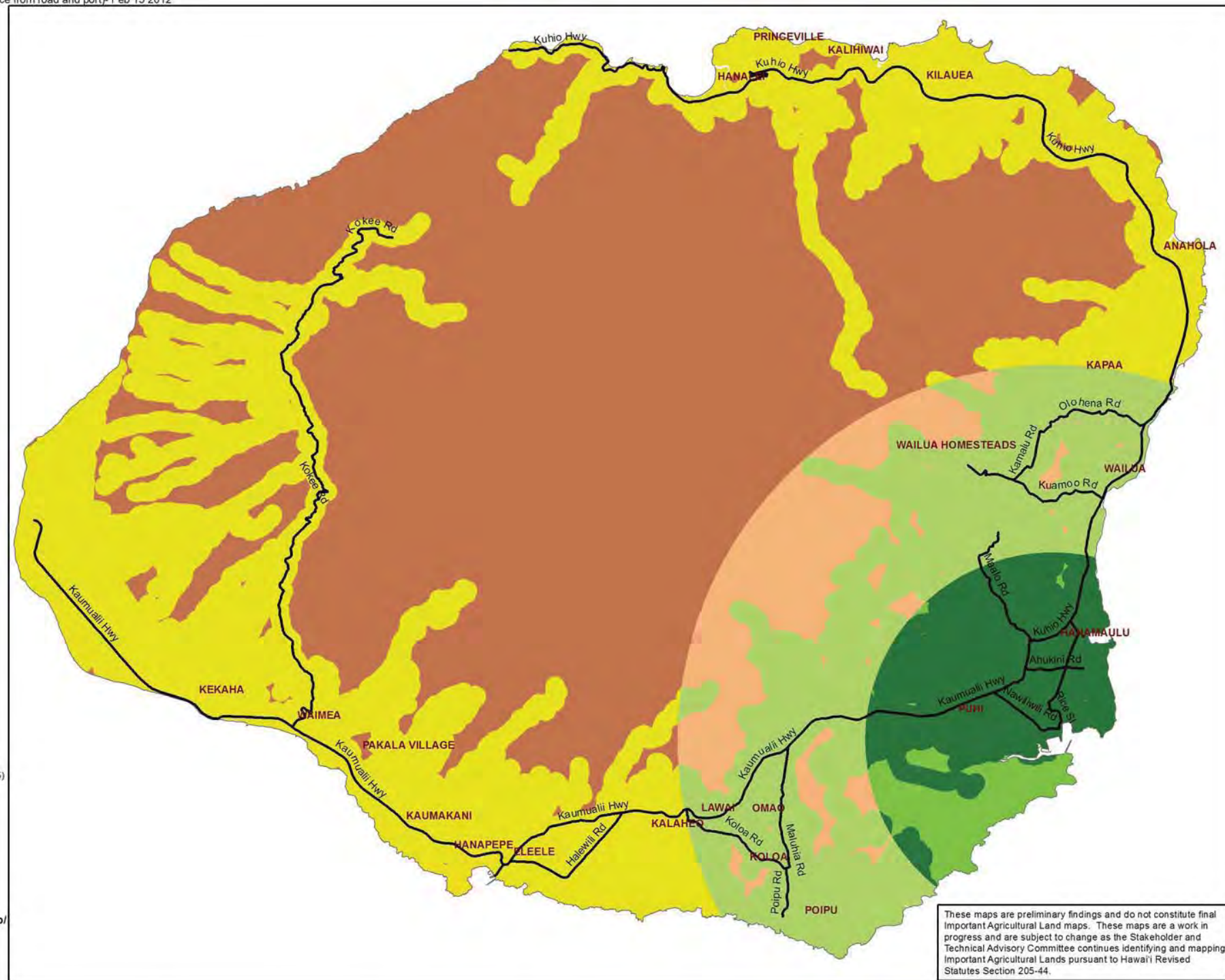
- Towns0807
- Major roads
- Distance from road and port
 - Least distance (1)
 - Low distance (0.9)
 - Moderate low distance (0.75)
 - Moderate high distance (0.675)
 - High distance (0.5)
 - Highest distance (0.45)

Sources:

- County of Kauai Planning Department (2007)
- NOAA Coastal Service Center (2006)
- <http://www.csc.noaa.gov/ccap/pacific/kauai/index.html>
- STAC meeting #6 mapping inputs (July 2010)



0 2.5 5 10 Miles



These maps are preliminary findings and do not constitute final Important Agricultural Land maps. These maps are a work in progress and are subject to change as the Stakeholder and Technical Advisory Committee continues identifying and mapping Important Agricultural Lands pursuant to Hawai'i Revised Statutes Section 205-44.

Criterion 8: Near supporting infrastructure

These maps are preliminary findings and do not constitute final Important Agricultural Land maps. These maps are a work in progress and are subject to change as the Stakeholder and Technical Advisory Committee continues identifying and mapping Important Agricultural Lands pursuant to Hawai'i Revised Statutes Section 205-44.