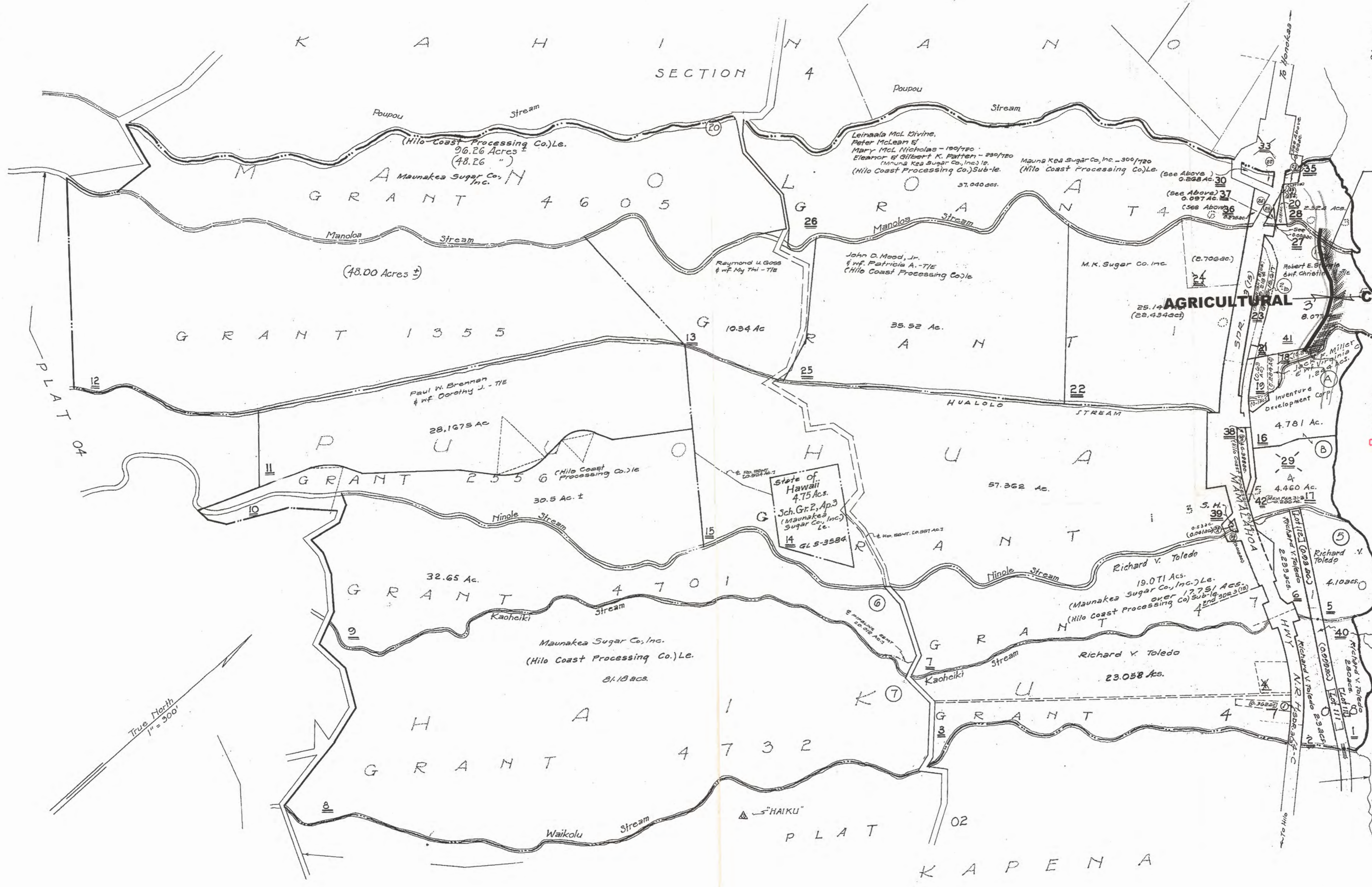


Boundary Interpretation No. 98-36

NOV 26 1972  
 NOV 25 1972  
 FEB 20 1972  
 OCT 13 1972  
 OCT 24 1972  
 NOV 7 1972  
 NOV 25 1972  
 FEB 1 1973  
 MAR 2 1973  
 OCT 31 1973  
 NOV 9 1973  
 DEC 10 1973  
 DEC 11 1973  
 OCT 9 1974  
 OCT 18 1974  
 FEB 20 1975  
 FEB 25 1975  
 APR 2 1975  
 APR 17 1975  
 APR 27 1975  
 APR 28 1975  
 OCT 1 1975  
 OCT 15 1975  
 OCT 27 1975  
 OCT 28 1975  
 OCT 29 1975  
 OCT 30 1975  
 OCT 31 1975  
 NOV 1 1975  
 NOV 2 1975  
 NOV 3 1975  
 NOV 4 1975  
 NOV 5 1975  
 NOV 6 1975  
 NOV 7 1975  
 NOV 8 1975  
 NOV 9 1975  
 NOV 10 1975  
 NOV 11 1975  
 NOV 12 1975  
 NOV 13 1975  
 NOV 14 1975  
 NOV 15 1975  
 NOV 16 1975  
 NOV 17 1975  
 NOV 18 1975  
 NOV 19 1975  
 NOV 20 1975  
 NOV 21 1975  
 NOV 22 1975  
 NOV 23 1975  
 NOV 24 1975  
 NOV 25 1975  
 NOV 26 1975  
 NOV 27 1975  
 NOV 28 1975  
 NOV 29 1975  
 NOV 30 1975  
 DEC 1 1975  
 DEC 2 1975  
 DEC 3 1975  
 DEC 4 1975  
 DEC 5 1975  
 DEC 6 1975  
 DEC 7 1975  
 DEC 8 1975  
 DEC 9 1975  
 DEC 10 1975  
 DEC 11 1975  
 DEC 12 1975  
 DEC 13 1975  
 DEC 14 1975  
 DEC 15 1975  
 DEC 16 1975  
 DEC 17 1975  
 DEC 18 1975  
 DEC 19 1975  
 DEC 20 1975  
 DEC 21 1975  
 DEC 22 1975  
 DEC 23 1975  
 DEC 24 1975  
 DEC 25 1975  
 DEC 26 1975  
 DEC 27 1975  
 DEC 28 1975  
 DEC 29 1975  
 DEC 30 1975  
 DEC 31 1975  
 JAN 1 1976  
 JAN 2 1976  
 JAN 3 1976  
 JAN 4 1976  
 JAN 5 1976  
 JAN 6 1976  
 JAN 7 1976  
 JAN 8 1976  
 JAN 9 1976  
 JAN 10 1976  
 JAN 11 1976  
 JAN 12 1976  
 JAN 13 1976  
 JAN 14 1976  
 JAN 15 1976  
 JAN 16 1976  
 JAN 17 1976  
 JAN 18 1976  
 JAN 19 1976  
 JAN 20 1976  
 JAN 21 1976  
 JAN 22 1976  
 JAN 23 1976  
 JAN 24 1976  
 JAN 25 1976  
 JAN 26 1976  
 JAN 27 1976  
 JAN 28 1976  
 JAN 29 1976  
 JAN 30 1976  
 JAN 31 1976  
 FEB 1 1976  
 FEB 2 1976  
 FEB 3 1976  
 FEB 4 1976  
 FEB 5 1976  
 FEB 6 1976  
 FEB 7 1976  
 FEB 8 1976  
 FEB 9 1976  
 FEB 10 1976  
 FEB 11 1976  
 FEB 12 1976  
 FEB 13 1976  
 FEB 14 1976  
 FEB 15 1976  
 FEB 16 1976  
 FEB 17 1976  
 FEB 18 1976  
 FEB 19 1976  
 FEB 20 1976  
 FEB 21 1976  
 FEB 22 1976  
 FEB 23 1976  
 FEB 24 1976  
 FEB 25 1976  
 FEB 26 1976  
 FEB 27 1976  
 FEB 28 1976  
 FEB 29 1976  
 FEB 30 1976  
 MAR 1 1976  
 MAR 2 1976  
 MAR 3 1976  
 MAR 4 1976  
 MAR 5 1976  
 MAR 6 1976  
 MAR 7 1976  
 MAR 8 1976  
 MAR 9 1976  
 MAR 10 1976  
 MAR 11 1976  
 MAR 12 1976  
 MAR 13 1976  
 MAR 14 1976  
 MAR 15 1976  
 MAR 16 1976  
 MAR 17 1976  
 MAR 18 1976  
 MAR 19 1976  
 MAR 20 1976  
 MAR 21 1976  
 MAR 22 1976  
 MAR 23 1976  
 MAR 24 1976  
 MAR 25 1976  
 MAR 26 1976  
 MAR 27 1976  
 MAR 28 1976  
 MAR 29 1976  
 MAR 30 1976  
 MAR 31 1976  
 APR 1 1976  
 APR 2 1976  
 APR 3 1976  
 APR 4 1976  
 APR 5 1976  
 APR 6 1976  
 APR 7 1976  
 APR 8 1976  
 APR 9 1976  
 APR 10 1976  
 APR 11 1976  
 APR 12 1976  
 APR 13 1976  
 APR 14 1976  
 APR 15 1976  
 APR 16 1976  
 APR 17 1976  
 APR 18 1976  
 APR 19 1976  
 APR 20 1976  
 APR 21 1976  
 APR 22 1976  
 APR 23 1976  
 APR 24 1976  
 APR 25 1976  
 APR 26 1976  
 APR 27 1976  
 APR 28 1976  
 APR 29 1976  
 APR 30 1976  
 MAY 1 1976  
 MAY 2 1976  
 MAY 3 1976  
 MAY 4 1976  
 MAY 5 1976  
 MAY 6 1976  
 MAY 7 1976  
 MAY 8 1976  
 MAY 9 1976  
 MAY 10 1976  
 MAY 11 1976  
 MAY 12 1976  
 MAY 13 1976  
 MAY 14 1976  
 MAY 15 1976  
 MAY 16 1976  
 MAY 17 1976  
 MAY 18 1976  
 MAY 19 1976  
 MAY 20 1976  
 MAY 21 1976  
 MAY 22 1976  
 MAY 23 1976  
 MAY 24 1976  
 MAY 25 1976  
 MAY 26 1976  
 MAY 27 1976  
 MAY 28 1976  
 MAY 29 1976  
 MAY 30 1976  
 MAY 31 1976  
 JUN 1 1976  
 JUN 2 1976  
 JUN 3 1976  
 JUN 4 1976  
 JUN 5 1976  
 JUN 6 1976  
 JUN 7 1976  
 JUN 8 1976  
 JUN 9 1976  
 JUN 10 1976  
 JUN 11 1976  
 JUN 12 1976  
 JUN 13 1976  
 JUN 14 1976  
 JUN 15 1976  
 JUN 16 1976  
 JUN 17 1976  
 JUN 18 1976  
 JUN 19 1976  
 JUN 20 1976  
 JUN 21 1976  
 JUN 22 1976  
 JUN 23 1976  
 JUN 24 1976  
 JUN 25 1976  
 JUN 26 1976  
 JUN 27 1976  
 JUN 28 1976  
 JUN 29 1976  
 JUN 30 1976  
 JUL 1 1976  
 JUL 2 1976  
 JUL 3 1976  
 JUL 4 1976  
 JUL 5 1976  
 JUL 6 1976  
 JUL 7 1976  
 JUL 8 1976  
 JUL 9 1976  
 JUL 10 1976  
 JUL 11 1976  
 JUL 12 1976  
 JUL 13 1976  
 JUL 14 1976  
 JUL 15 1976  
 JUL 16 1976  
 JUL 17 1976  
 JUL 18 1976  
 JUL 19 1976  
 JUL 20 1976  
 JUL 21 1976  
 JUL 22 1976  
 JUL 23 1976  
 JUL 24 1976  
 JUL 25 1976  
 JUL 26 1976  
 JUL 27 1976  
 JUL 28 1976  
 JUL 29 1976  
 JUL 30 1976  
 JUL 31 1976  
 AUG 1 1976  
 AUG 2 1976  
 AUG 3 1976  
 AUG 4 1976  
 AUG 5 1976  
 AUG 6 1976  
 AUG 7 1976  
 AUG 8 1976  
 AUG 9 1976  
 AUG 10 1976  
 AUG 11 1976  
 AUG 12 1976  
 AUG 13 1976  
 AUG 14 1976  
 AUG 15 1976  
 AUG 16 1976  
 AUG 17 1976  
 AUG 18 1976  
 AUG 19 1976  
 AUG 20 1976  
 AUG 21 1976  
 AUG 22 1976  
 AUG 23 1976  
 AUG 24 1976  
 AUG 25 1976  
 AUG 26 1976  
 AUG 27 1976  
 AUG 28 1976  
 AUG 29 1976  
 AUG 30 1976  
 AUG 31 1976  
 SEP 1 1976  
 SEP 2 1976  
 SEP 3 1976  
 SEP 4 1976  
 SEP 5 1976  
 SEP 6 1976  
 SEP 7 1976  
 SEP 8 1976  
 SEP 9 1976  
 SEP 10 1976  
 SEP 11 1976  
 SEP 12 1976  
 SEP 13 1976  
 SEP 14 1976  
 SEP 15 1976  
 SEP 16 1976  
 SEP 17 1976  
 SEP 18 1976  
 SEP 19 1976  
 SEP 20 1976  
 SEP 21 1976  
 SEP 22 1976  
 SEP 23 1976  
 SEP 24 1976  
 SEP 25 1976  
 SEP 26 1976  
 SEP 27 1976  
 SEP 28 1976  
 SEP 29 1976  
 SEP 30 1976  
 SEP 31 1976  
 OCT 1 1976  
 OCT 2 1976  
 OCT 3 1976  
 OCT 4 1976  
 OCT 5 1976  
 OCT 6 1976  
 OCT 7 1976  
 OCT 8 1976  
 OCT 9 1976  
 OCT 10 1976  
 OCT 11 1976  
 OCT 12 1976  
 OCT 13 1976  
 OCT 14 1976  
 OCT 15 1976  
 OCT 16 1976  
 OCT 17 1976  
 OCT 18 1976  
 OCT 19 1976  
 OCT 20 1976  
 OCT 21 1976  
 OCT 22 1976  
 OCT 23 1976  
 OCT 24 1976  
 OCT 25 1976  
 OCT 26 1976  
 OCT 27 1976  
 OCT 28 1976  
 OCT 29 1976  
 OCT 30 1976  
 OCT 31 1976  
 NOV 1 1976  
 NOV 2 1976  
 NOV 3 1976  
 NOV 4 1976  
 NOV 5 1976  
 NOV 6 1976  
 NOV 7 1976  
 NOV 8 1976  
 NOV 9 1976  
 NOV 10 1976  
 NOV 11 1976  
 NOV 12 1976  
 NOV 13 1976  
 NOV 14 1976  
 NOV 15 1976  
 NOV 16 1976  
 NOV 17 1976  
 NOV 18 1976  
 NOV 19 1976  
 NOV 20 1976  
 NOV 21 1976  
 NOV 22 1976  
 NOV 23 1976  
 NOV 24 1976  
 NOV 25 1976  
 NOV 26 1976  
 NOV 27 1976  
 NOV 28 1976  
 NOV 29 1976  
 NOV 30 1976  
 DEC 1 1976  
 DEC 2 1976  
 DEC 3 1976  
 DEC 4 1976  
 DEC 5 1976  
 DEC 6 1976  
 DEC 7 1976  
 DEC 8 1976  
 DEC 9 1976  
 DEC 10 1976  
 DEC 11 1976  
 DEC 12 1976  
 DEC 13 1976  
 DEC 14 1976  
 DEC 15 1976  
 DEC 16 1976  
 DEC 17 1976  
 DEC 18 1976  
 DEC 19 1976  
 DEC 20 1976  
 DEC 21 1976  
 DEC 22 1976  
 DEC 23 1976  
 DEC 24 1976  
 DEC 25 1976  
 DEC 26 1976  
 DEC 27 1976  
 DEC 28 1976  
 DEC 29 1976  
 DEC 30 1976  
 DEC 31 1976



Owners of Parcels 30, 36, 36, & 37:  
 State of Hawaii - 78/80  
 Harvey R. Campbell - 1/80  
 Gilbert I. Campbell - 1/80

THE APPROXIMATE STATE LAND USE  
 AGRICULTURAL / CONSERVATION  
 DISTRICT BOUNDARY  
 (FOLLOWS 'TOP OF PALI')

27 Eleanor of Gilbert K. Patten  
 - 230/720  
 Mauna Kea Sugar Co., Inc. - 300/720  
 Leiruaia McI. Divine,  
 Peter McLean of  
 Mary McI. Nicholas - 190/720  
 Robert E. Stengle  
 and Christine M. '76

23 Robert E. Stengle  
 and Christine M. '76

**FILE COPY**  
 The boundary as located, named and  
 delineated is hereby certified as the  
 actual Land Use District Boundary  
 adopted by the State Land Use  
 Commission, Honolulu, Hawaii.

OCT 29 1988 by [Signature]  
 Date Executive Officer

Note: All parcels owned by Mauna Kea Sugar Co., Inc. unless otherwise noted.

Parcels Dropped: 21, 18, 31, 24, 29, (32, 33, 34 - in road)

THIRD DIVISION		
ZONE	SEC.	PLAT
3	2	03
CONTAINING PARCELS		
SCALE: 1 in. = 300 ft.		

PRINTED SEP 2 1998

POR. WAIKALIMALO-MAULUA HOMESTEADS, N. HILO (Hakalau Plantation)

Dwg. No.: 11224  
 Source: Survey Office  
 By: R.D.

LAND USE COMMISSION  
 STATE OF HAWAII  
 1988 SEP - 2 A 11: 31

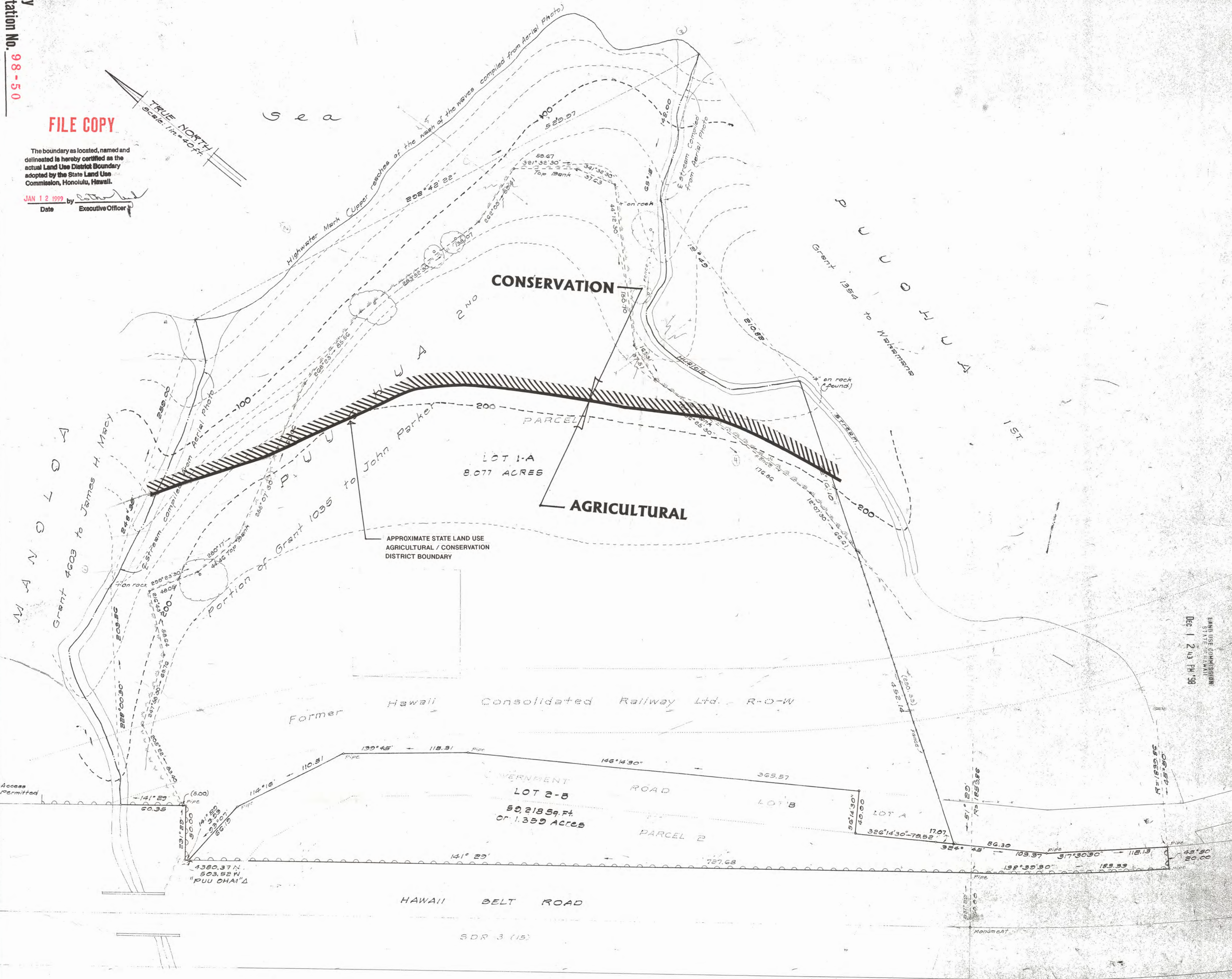
**FILE COPY**  
 Boundary Interpretation No. 98-36

**FILE COPY**

The boundary as located, named and delineated is hereby certified as the actual Land Use District Boundary adopted by the State Land Use Commission, Honolulu, Hawaii.

JAN 12 1999 by [Signature]  
Date Executive Officer

TRUE NORTH  
Scale: 1" = 40' ±



NOTES:  
1. Contours compiled from U.S.G.S quad map and added November 25, 1998.  
2. Ties along top bank are from actual 1983 ground survey and added November 25, 1998.

Survey and Plan by:  
Island Survey, Inc.  
P.O. Box 337, Hilo, Hawaii  
July 18, 1983

PLAN SHOWING  
SUBDIVISION OF ROAD REMNANT  
INTO LOTS "A" AND "B"  
AND CONSOLIDATED WITH EXISTING LOTS AS FOLLOWS:  
LOT "A" CONSOLIDATED WITH PARCEL 1 AND DESIGNATED  
AS LOT 1-"A"  
LOT "B" CONSOLIDATED WITH PARCEL 2 AND DESIGNATED  
AS LOT 2-"B"  
PUUOHUA 2<sup>ND</sup> NORTH HILO  
ISLAND OF HAWAII, HAWAII



[Signature]

LEGEND:  
--- Denotes No Vehicle Access Permitted

owner: Bob Stangle  
5430 Kirkwood Place  
Honolulu, Hawaii 96821