

Existing Conditions



Simulated Conditions



FIGURE 15 West O'ahu Solar Plus Storage Project

PHOTO SIMULATION

*Representative
Viewpoint 11*
Kualakai Parkway &
Farrington Highway



VICINITY MAP

Photograph Information

Time of photograph: 7:22 a.m.
Date of photograph: 05/22/2020
Weather condition: Clear
Viewing direction: Northwest
Latitude: 21.361916° N
Longitude: -158.055321° W
Photo Location: The photo was taken from along Kualakai Parkway approximately 4600 feet southeast of the Project. Photograph provided by City & County of Honolulu Department of Planning and Permitting.



Existing Conditions



Simulated Conditions



FIGURE 15 West O'ahu Solar Plus Storage Project

PHOTO SIMULATION

*Representative
Viewpoint 12*
Kualakai Parkway
Mile Marker 2.3



VICINITY MAP

Photograph Information

Time of photograph: 7:40 a.m.
Date of photograph: 05/22/2020
Weather condition: Clear
Viewing direction: Northwest
Latitude: 21.364071° N
Longitude: -158.057414° W
Photo Location: The photo was taken from along Kualakai Parkway approximately 3500 feet southeast of the Project. Photograph provided by City & County of Honolulu Department of Planning and Permitting.



Existing Conditions



Simulated Conditions



FIGURE 15 West O'ahu Solar Plus Storage Project

PHOTO SIMULATION

*Representative
Viewpoint 13*
H-1 Freeway at
Kualakai Parkway



VICINITY MAP

Photograph Information

Time of photograph: 7:50 a.m.
Date of photograph: 05/22/2020
Weather condition: Partly Cloudy
Viewing direction: North-northwest
Latitude: 21.366336° N
Longitude: -158.060247° W
Photo Location: The photo was taken from the H-1 Freeway bridge over Kualakai Parkway approximately 2000 feet southeast of the Project. Photograph provided by City & County of Honolulu Department of Planning and Permitting.



Figure 16

West Oahu Solar Plus Storage Project

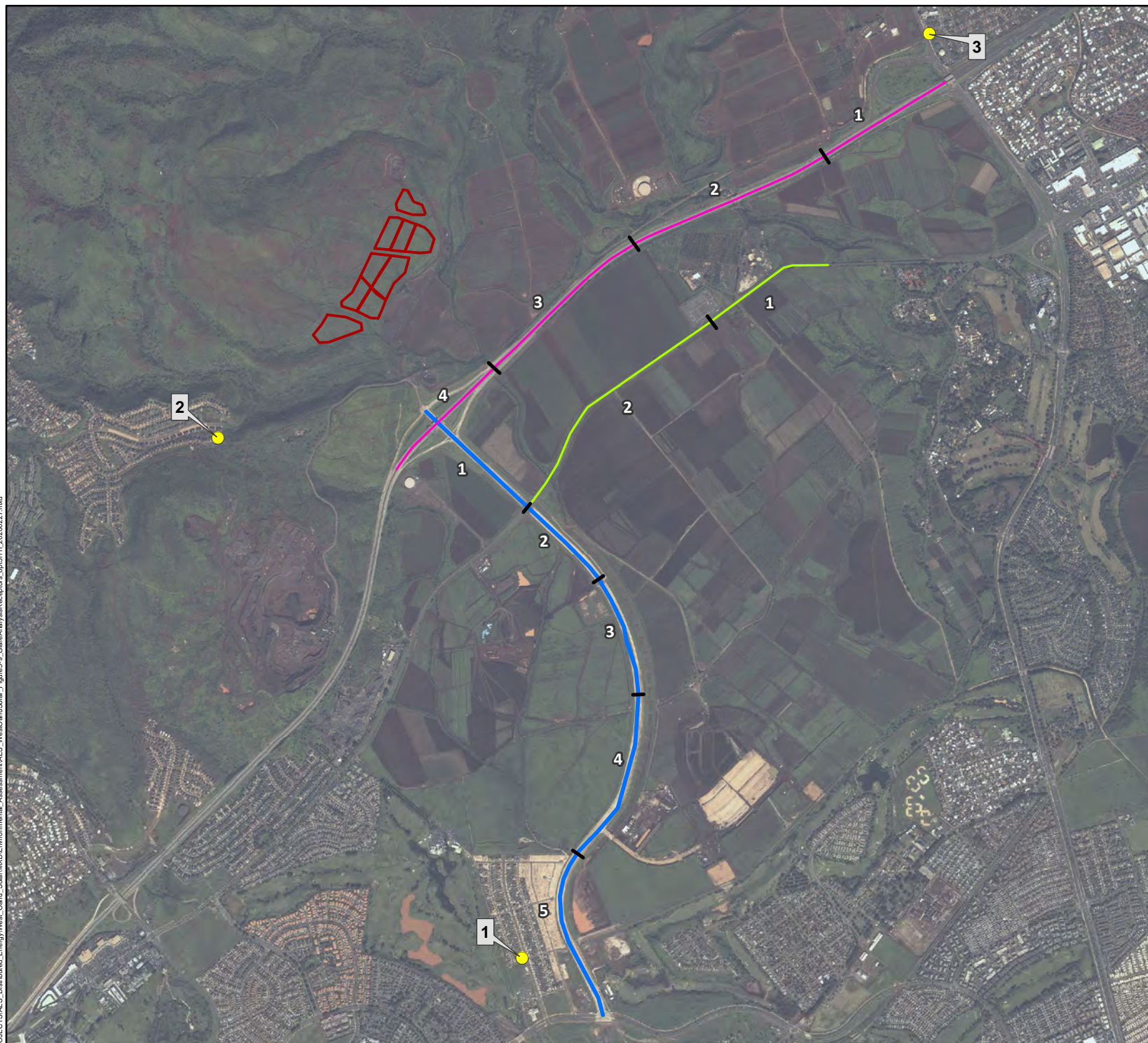
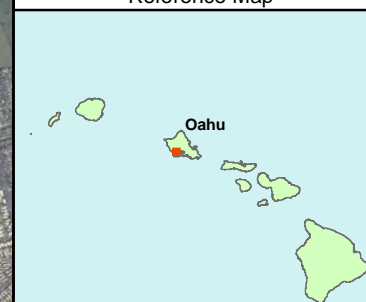
AES Distributed Energy
Glare Analysis Receptors

HONOLULU COUNTY, HI

- Project Layout (Solar Arrays)
- Observation Point
- Road Segments
- Farrington Highway
- H-1 Freeway
- Kualakai Parkway



Reference Map



P:\GIS\PROJECTS\AES_Distributed_Energy\West_Oahu_Solar\GIS\Environmental_Assessment\AES_WestOahuSolar_Figure8-9_GlareAnalysisReceptors_Spl5111_20200227.mxd



1:30,000 WGS 1984 UTM Zone 4N

0 0.25 0.5 1 Miles

NOT FOR CONSTRUCTION




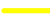


Figure 17

West Oahu Solar Plus Storage Project

AES Distributed Energy

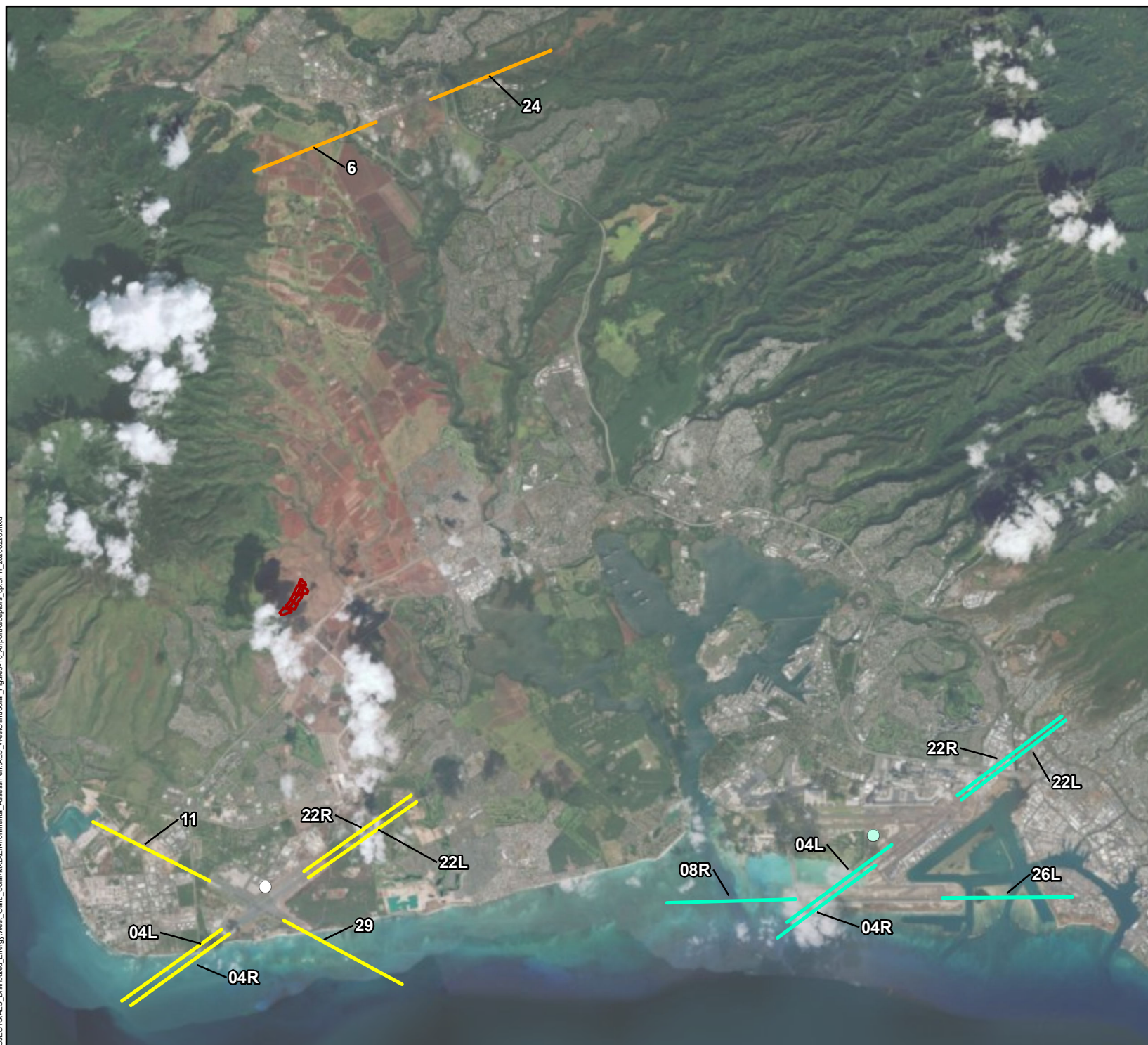
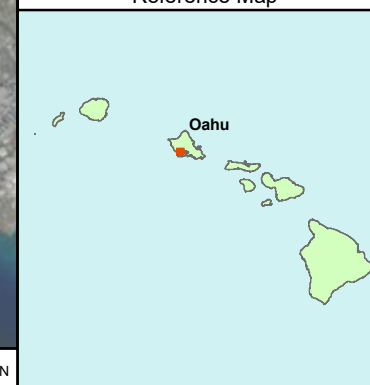
Airport Receptors

HONOLULU COUNTY, HI

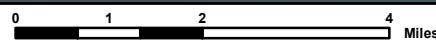
-  Project Layout (Solar Arrays)
- Honolulu International Airport (HNL)
-  Final Approach
-  Air Traffic Control Tower
- Kalaheoa Airport (JRF)
-  Final Approach
-  Air Traffic Control Tower
- Wheeler Army Airfield
-  Final Approach



Reference Map



1:130,000 WGS 1984 UTM Zone 4N



NOT FOR CONSTRUCTION





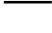

Figure 18

West Oahu Solar Plus Storage Project

AES Distributed Energy

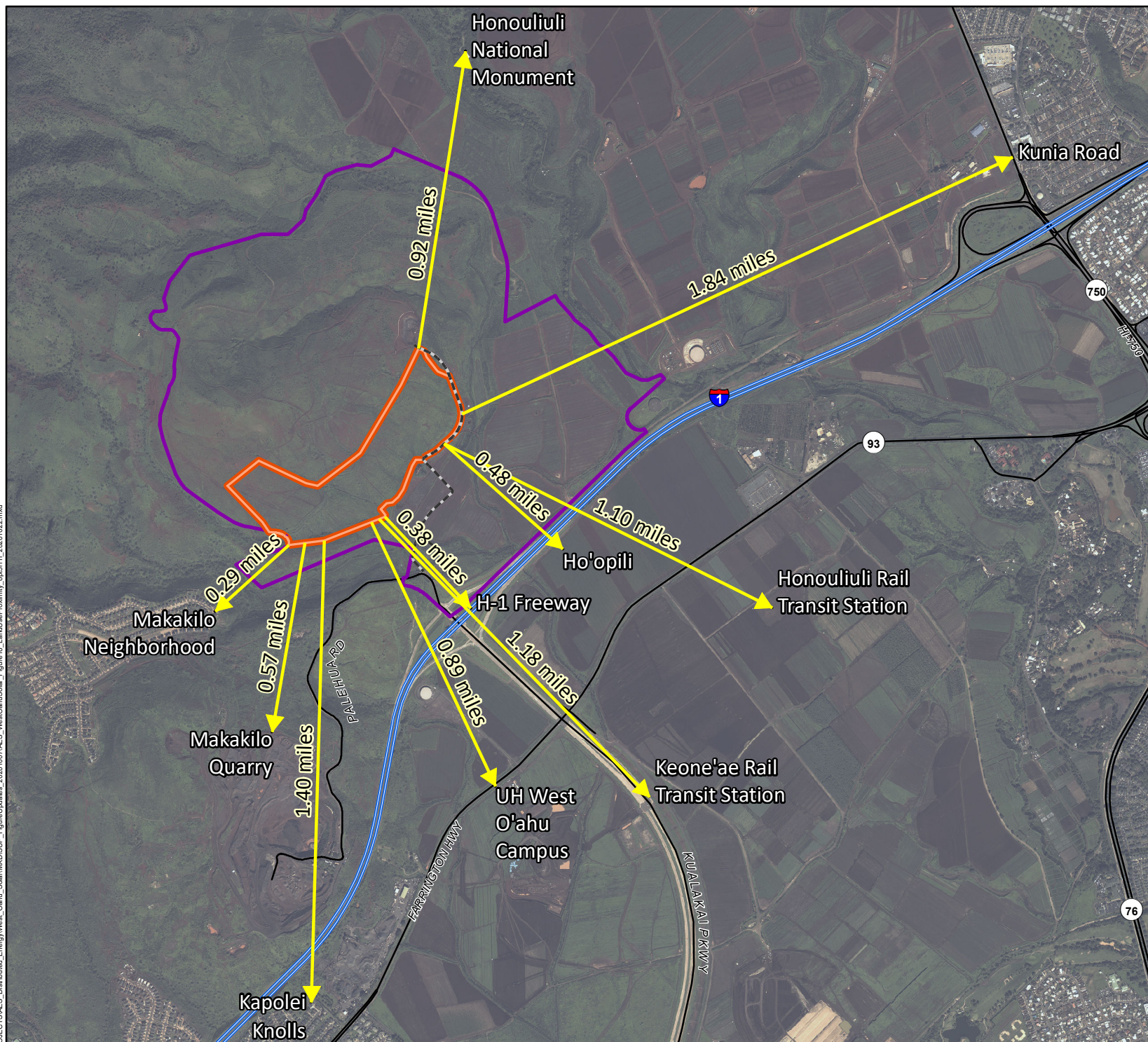
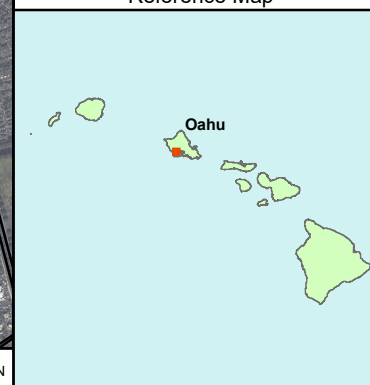
Proximity to Surrounding Land Uses

HONOLULU COUNTY, HI

-  Project Area
-  Property Boundary
-  Existing Access Road
-  Interstate Highway
-  Roadway
-  Approximate Distance to Surrounding Land Uses from Project Area



Reference Map



1:26,000 WGS 1984 UTM Zone 4N

0 0.25 0.5 1 Miles

NOT FOR CONSTRUCTION