

BEFORE THE LAND USE COMMISSION
OF THE STATE OF HAWAII



In the Matter of the Petition of) DOCKET NO. A17-804
)
HAWAIIAN MEMORIAL LIFE PLAN, LTD.) HAWAIIAN MEMORIAL LIFE
) PLAN, LTD.
To Amend The Conservation Land Use)
District Boundary Into The Urban Land Use)
District For Approximately 53.449 Acres Of)
Land At Kāneʻohe, Island of Oahu, State of)
Hawai`i, Tax Map Key: (1) 4-5-033: por. 001)
_____)

PETITIONER HAWAIIAN MEMORIAL LIFE PLAN, LTD.'S:

(1) SUPPLEMENTAL LIST OF EXHIBITS

(2) EXHIBITS 54 - 58

AND

CERTIFICATE OF SERVICE

BENJAMIN M. MATSUBARA, #993-0
CURTIS T. TABATA, #5607-0
Matsubara, Kotake & Tabata
888 Mililani Street, Suite 308
Honolulu, Hawai`i 96813

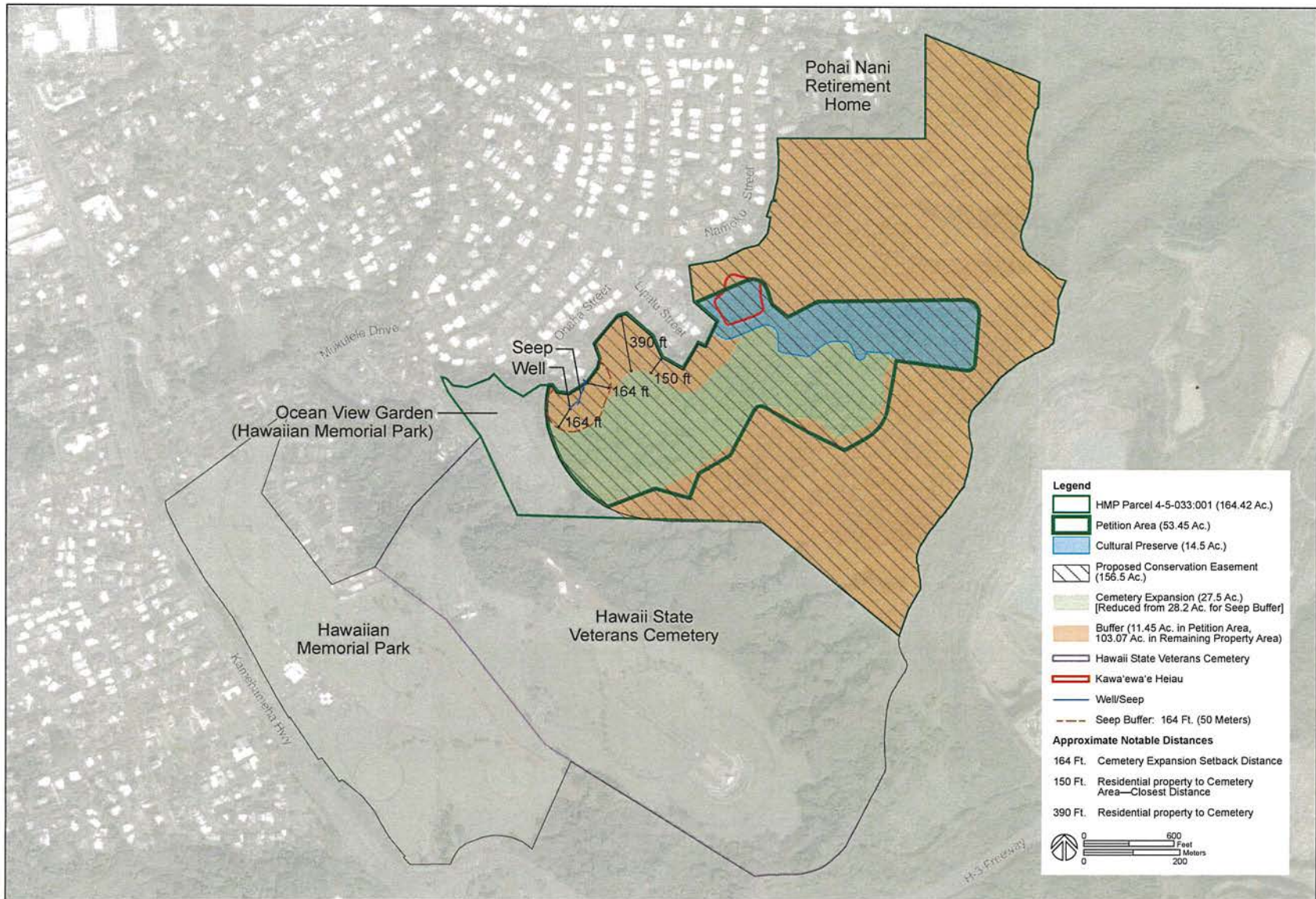
Attorneys for Petitioner
HAWAIIAN MEMORIAL LIFE
PLAN, LTD.

DOCKET NO./PETITIONER: A17-804/HAWAIIAN MEMORIAL LIFE PLAN, LTD.

PARTY: Petitioner HAWAIIAN MEMORIAL LIFE PLAN, LTD.

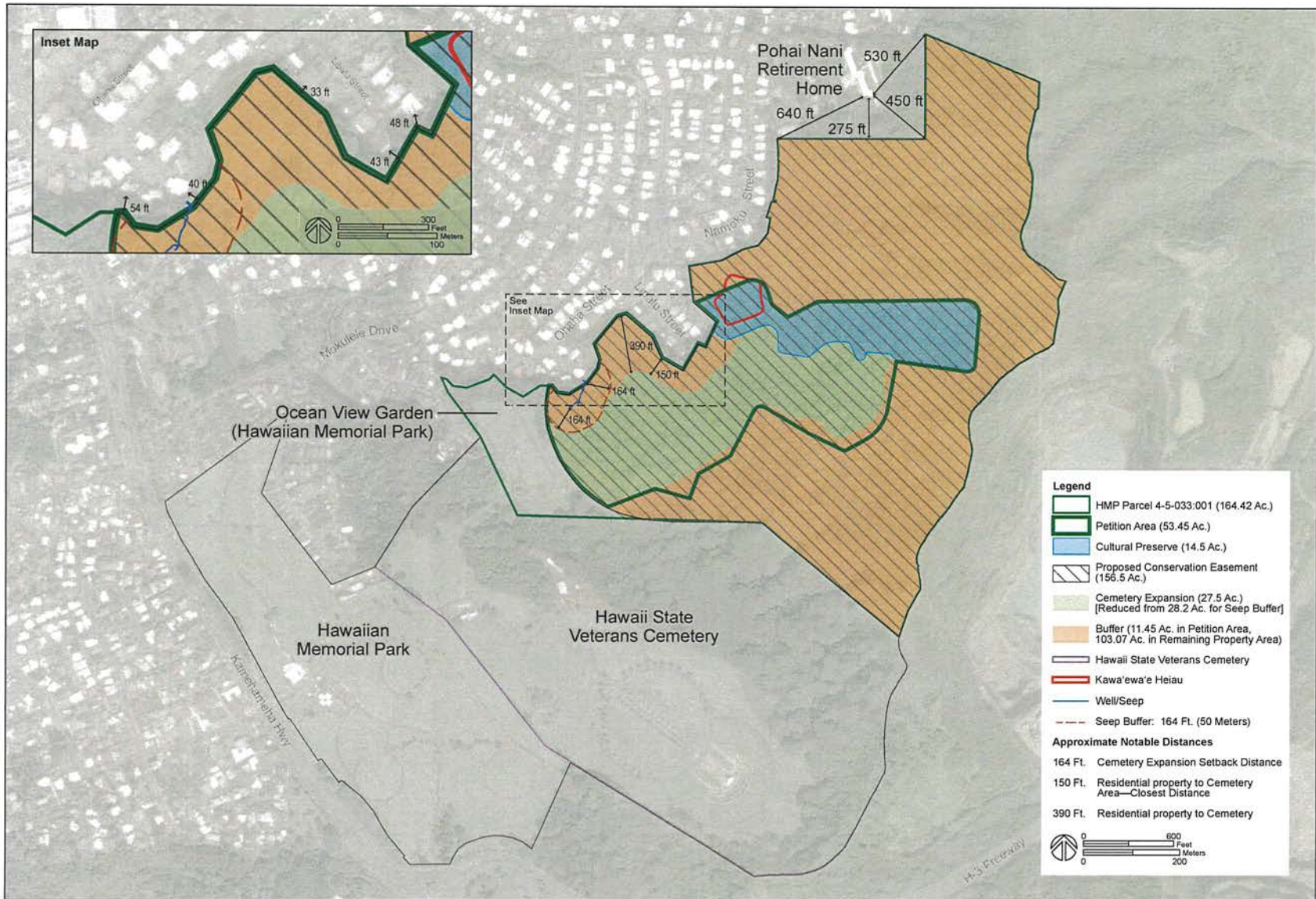
SUPPLEMENTAL LIST OF EXHIBITS

EXHIBIT NUMBER	DESCRIPTION	PARTY: OBJECTIONS	ADMIT
54	Updated Project Site Plan (May 2020)		
55	Updated Site Plan Showing Setback Distances		
56	Report of O'ahu's Residents Support / Opposition to Hawaiian Memorial Park Expansion, dated April 2020 (Prepared by SMS)		
57	Letter dated May 1, 2020 from Summer J. Waring, III of Service Corporation International to Jonathan Scheuer, Chair, State of Hawai'i Land Use Commission		
58	Letter dated February 12, 2020 from Jade T. Butay, Director of Transportation, Department of Transportation to Mary Alice Evans, Director, Office of State Planning re: Land Use District Boundary Amendment, A17-804		



Hawaiian Memorial Park Cemetery Expansion Project

Exhibit 54. Updated Project Site Plan (May 2020)



Hawaiian Memorial Park Cemetery Expansion Project

Exhibit 55. Updated Site Plan Showing Setback Distances



Established 1960

Database Marketing

Economic & Social Impact Studies

Evaluations

Research

Modeling/Forecasting

SMS

1042 Fort Street Mall
Suite 200
Honolulu, HI 96813
Ph: (808) 537-3356
Toll Free (877) 535-5767
E-mail: info@smshawaii.com
Website: www.smshawaii.com

Beyond Information. Intelligence.

The image shows the cover of a report. On the left side, there is a logo for Hawaiian Memorial Park, featuring a stylized tree and the text 'HAWAIIAN MEMORIAL PARK' and 'Cemetery & Funeral Services'. The main title of the report is 'REPORT OF O'AHU'S RESIDENTS SUPPORT/OPPOSITION TO HAWAIIAN MEMORIAL PARK EXPANSION', written in large, bold, white capital letters on a dark green background.

Prepared for Hawaiian Memorial Park

April, 2020

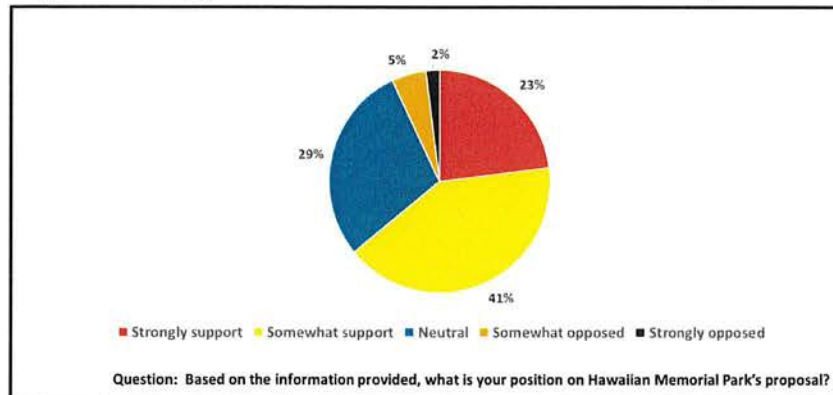
CONTENTS

EXECUTIVE SUMMARY	1
BACKGROUND	3
OBJECTIVES	3
SUMMARY OF RESULTS.....	4
RESEARCH METHODOLOGY	12
APPENDIX.....	13
APPENDIX A: SURVEY INSTRUMENT	13
APPENDIX B: OPEN-ENDED RESPONSES	16
APPENDIX B-1: SUPPORT OPEN-ENDED	16
APPENDIX B-2: NEUTRAL OPEN-ENDED.....	22
APPENDIX B-3: OPPOSED OPEN-ENDED	24

EXECUTIVE SUMMARY

A majority of O'ahu residents support Hawaiian Memorial Park's planned expansion. Sixty-four percent (64%) of O'ahu residents support the expansion. Only a minority, seven percent (7%) oppose the expansion. Both Windward O'ahu residents and the residents in the balance of O'ahu support the Hawaiian Memorial Park planned expansion. To see the level of support by area please go to Summary of Results.

Support or Opposition to Hawaiian Memorial Park Expansion



Those who support the Hawaiian Memorial Park expansion agree that the plan will provide future burial sites as well as protect the cultural elements and open space. Following are representative samples what most influenced supporters of the expansion plans.

"Relatives buried in the park, I'll be buried in the park, space is limited, must open up more for future burials"

"Conservation easement, buffer from neighboring homes"

"It is on undeveloped land, looks like a good place to expand"

"Its emphasis on keeping much of the land as open, undeveloped land; consideration given to cultural issues/concerns; distance from the residential areas"

"Not entire project going toward new plot – preserving a lot for cultural use"

"The provision for preservation of historical sites and the layout of the site"

A plurality of those opposed to the expansion do not support the expansion because they do not agree with ground burials but recommend cremation. There were a few concerns regarding the amount of land to be cleared and proximity to houses.

"No land should be used for burial. Cremate and put ashes in your living room."

"I think that the land is very sacred. It is not appropriate to develop a graveyard on land that was very cherished by Native Hawaiians. It seems like this plan would take up a lot of land and disrupt a lot of natural habitats. If I was asked my true opinion, I would say that I am strongly opposed to this proposal. I think cemeteries should build up rather than across land. I think they should maybe plan to build up (buildings) rather than developing across land. That way, they can still make money and natural ecosystems and habitats will be maintained."

"Amount of land to be cleared."

To read all the comments of what most influenced those who support or oppose the proposed Hawaiian Memorial Park expansion, please go to Appendix B.

All the aspects of the proposed Hawaiian Memorial expansion plan were considered important to O'ahu residents. O'ahu residents also agreed with a range of benefits that Hawaiian Memorial Park provides to the community. (See Summary of Results for more details.)

A minority of respondents do not know enough about the Hawaiian Memorial Park planned expansion. Thus, the only areas of potential mitigation are the need for continued communication of the Hawaiian Memorial Park expansion plans to Hawai'i residents who neither support nor oppose the planned expansion (neutral).

The results presented in this report are based on surveys completed by 400 randomly selected O'ahu residents. The survey results provide a margin of error of +/-5 percent at 95 percent confidence interval. (For more details, please see the Research Methodology section.)

BACKGROUND

Dedicated to the community on Memorial Day 1958, Hawaiian Memorial Park (Client) serves the families of Hawai'i with dignity and compassion during their time of greatest need. Located in Kāne'ohe, O'ahu it is one of Hawai'i's largest and most established memorial parks, the cemetery draws thousands of families to honor the memories of their loved ones.

For more than a decade the Client has been trying to gain government and community support to expand the park to better fulfill future community needs. Client management is again in the process of requesting approval for a revised plan to convert approximately 53 acres of conservation land for the expansion. The revised plan is based on extensive community and community leaders' input.

This proposal has been developed to gain a measurement of community support/opposition to the updated expansion plan.

OBJECTIVES

The primary objectives of this project are:

1. To quantify the level of support/opposition to the Hawaiian Memorial Park expansion plans
2. To gain insights as to what mitigation actions can be undertaken to convert opponents to support the expansion

SUMMARY OF RESULTS

SMS professionals undertook statistical variance analysis to investigate differences in attitudes and opinions of Windward residents as compared to the balance of residents of O’ahu (Other O’ahu) and among demographic segments. The few areas where such variances are present are reported.

A majority of Hawai’i residents support the Hawaiian Memorial expansion. Respondents were provided with the following description of the expansion plan and two topographical views of the planned expansion.

“Hawaiian Memorial Park has been a part of Kāne’ohe since 1958. Currently, 94 percent of its burial space is sold and no new cemeteries have been built on O’ahu since the 1960s. As a result, Hawaiian Memorial is proposing to expand to meet growing needs. The project would be located on 156.5 acres of undeveloped land owned by Hawaiian Memorial, adjacent to its current cemetery. It would include 28.2 acres of new cemetery space and the establishment of a 14.5-acre preserve to protect significant cultural sites on the property. If approved, all 156.5 acres, including the new cemetery area, cultural preserve, and remaining open space would be placed in a perpetual conservation easement to prohibit future development on Hawaiian Memorial’s property.”



Project Highlights:

- Only 18% of parcel to be used for cemetery (28.2 acres of 156.5 acres)
- 14.5 acre cultural preserve to be established in partnership with Ko’olaupoko Hawaiian Civic Club
- Approx. 125 acres will remain open space
- Entire 156.5 acres to be placed in conservation easement with the Hawaiian Islands Land Trust to ensure no further development
- Minimum 150-foot buffer from nearest homes
- Approx. 2,000-foot buffer from Pohai Nani
- 100-year storm mitigation measures to improve drainage and storm water runoff
- Addresses dwindling supply of interment space on O’ahu

A majority of all O'ahu residents (64%) support the Hawaiian Memorial Park expansion. Support among Windward residents is similar to the Other O'ahu residents (66% vs. 64%). These differences are not statistically significant.

Level of Support for Proposed Expansion

	Total O'ahu	Windward O'ahu	Other O'ahu
Strongly support	23%	26%	22%
Somewhat support	41%	38%	42%
Neutral	29%	25%	30%
Somewhat opposed	5%	7%	4%
Strongly opposed	2%	5%	1%

Question: Based on the information provided, what is your position on Hawaiian Memorial Park's proposal?

Survey respondents were asked to state in their own words "What most influenced your position on the proposal?". SMS coded the responses into general categories. All responses can be viewed in Appendix B.

The factors that influenced respondents' support for the planned expansion were general support for the expansion, a recognition that Hawaiian Memorial Park needs more space, and the recognition that the plan ensures cultural and land preservation.

Summary of Strongly Support Feedback

	Number of Respondents	% of Responses
Influenced your position on the proposal		
Agree with the expansion	24	26%
Need more space	22	24%
Cultural/Land preservation	21	23%
Relatives buried in the park	8	9%
It is a good memorial park	5	5%
Other	5	5%
Buffer zone	3	3%
Storm mitigation	2	2%
I like the way it is	1	1%
Plan to be buried there	1	1%
The location	1	1%
Total	93	100%

Three out of ten (29%) of O’ahu residents feel neutral about the Hawaiian Memorial Park expansion plans. A majority of the residents who are neutral in their opinion about the expansion either don’t know or have no comments. A minority need more information.

It should be noted that 14 percent of the neutral respondents agree with the expansion plans of Hawaiian Memorial Park.

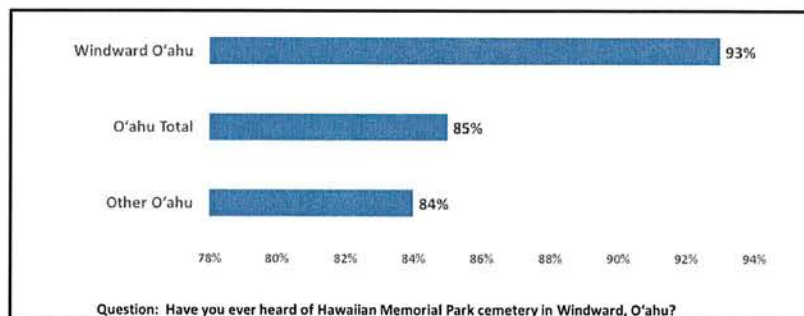
Summary of Neutral Respondents’ Feedback

	Number of Respondents	% of Responses
Influenced your position on the proposal		
None/Nothing/No comment	26	26%
Don't know/Not sure	15	15%
Agree with the expansion	14	14%
Cultural/Land preservation	13	13%
Need more information about the proposal/park	13	13%
Need more space	11	11%
It doesn't affect/impact me	6	6%
The park have enough space	1	1%
Do not support the proposal	1	1%
Total	100	100%

There were too few respondents who opposed the Hawaiian Memorial Park expansion to code. To read the comments from O’ahu residents who opposed the Hawaiian Memorial Park expansion, please review Appendix B-3.

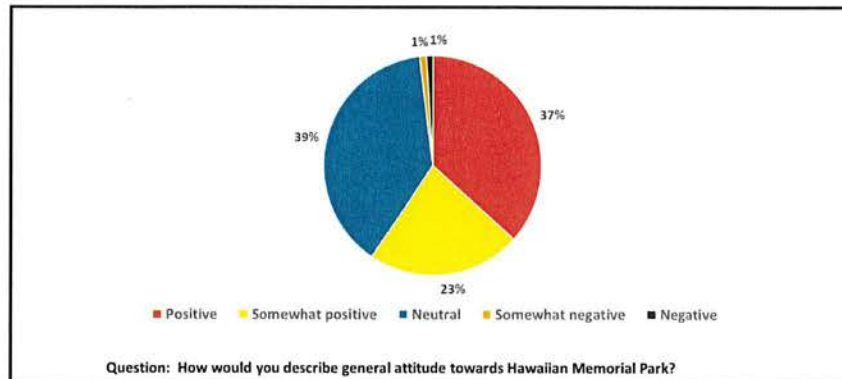
Windward O’ahu residents are more aware of Hawaiian Memorial Park than Other O’ahu residents. As is noted in the following graph, nine out of ten Windward O’ahu residents have heard of Hawaiian Memorial Park as compared to eight out of ten in the balance of O’ahu. These variances are not statistically significant.

Awareness of Hawaiian Memorial Park



A majority of O'ahu residents have a positive opinion of Hawaiian Memorial Park. Six out of ten (60%) of O'ahu adults have a positive opinion of Hawaiian Memorial Park. Only two percent (2%) of O'ahu residents have a negative opinion of Hawaiian Memorial Park.

Opinion of Hawaiian Memorial Park



Respondents were asked to provide feedback on the key aspects of the planned Hawaiian Memorial Park expansion. Following table summarizes the percentage of O'ahu residents who ranked each of the aspects of the expansion important. There are no statistically significant differences in opinions of Windward O'ahu residents and the residents in the balance of O'ahu.

Percent Who Consider the Aspect Important and Answered 7 and Above on a Scale of 1 to 10 Where 10 is Very Important

	Total O'ahu	Windward O'ahu	Other O'ahu
Only 18% of the project area will be used as a cemetery (28.2 acres of 156.5 acres) with 82% for open space and cultural preservation	69%	75%	65%
A 14.5-acre cultural preserve will be established in partnership with a windward Native Hawaiian community organization	68%	70%	67%
Approximately 125 acres will remain open space forever	69%	77%	67%
The entire 156.5 acres owned by Hawaiian Memorial Park will be placed in a conservation easement to ensure no further development will ever occur on the property	68%	73%	66%
There will be a minimum 150-foot buffer from nearest homes	66%	72%	62%
There will be an approximate 2,000-foot buffer from Pohai Nani senior residences.	61%	69%	59%
There will be 100-year storm mitigation measures to improve drainage and storm water runoff	77%	81%	76%
The addition of new burial space will address the dwindling supply of interment space on O'ahu.	68%	72%	67%
The new area will provide green open space and visually appealing landscaping for the community	66%	72%	64%

Question: Reviewing again the Hawaiian Memorial Park proposal, how important are each of the following aspects of the proposal. On a scale of 1 to 10 where 1 is not at all important and 10 is very important, how important is it that ...

The following table provides a comprehensive representation of O'ahu residents' responses regarding the importance of each aspect of the Hawaiian Memorial Park expansion. A minority of O'ahu residents consider these aspects of the expansion as not important.

Detailed Important Scores for Aspects of the Planned Expansion

(ROTATE)	Not at all important									Very Important	Don't know
	1	2	3	4	5	6	7	8	9	10	
Only 18% of the project area will be used as a cemetery (28.2 acres of 156.5 acres) with 82% for open space and cultural preservation	3%	1%	1%	2%	7%	7%	13%	15%	15%	26%	11%
A 14.5-acre cultural preserve will be established in partnership with a windward native Hawaiian community organization	3%	1%	1%	2%	8%	6%	11%	12%	15%	30%	10%
Approximately 125 acres will remain open space forever.	3%	2%	1%	1%	7%	7%	10%	11%	14%	34%	9%
The entire 156.5 acres owned by Hawaiian Memorial Park will be placed in a conservation easement to ensure no further development will ever occur on the property	3%	1%	1%	1%	10%	6%	8%	9%	14%	37%	11%
There will be a minimum 150-foot buffer from nearest homes	3%	2%	1%	2%	9%	8%	9%	12%	13%	32%	10%
There will be an approximate 2,000-foot buffer from Pohai Nani senior residences.	3%	3%	1%	2%	10%	9%	12%	11%	13%	25%	10%
There will be 100-year storm mitigation measures to improve drainage and storm water runoff	2%	1%	1%	1%	5%	5%	10%	12%	17%	38%	9%
The addition of new burial space will address the dwindling supply of interment space on O'ahu for the aging population.	3%	1%	2%	2%	7%	7%	13%	13%	11%	31%	10%
The new area will provide green open space and visually appealing landscaping for the community	3%	1%	1%	1%	10%	8%	11%	12%	14%	29%	9%

Question: Reviewing again the Hawaiian Memorial Park proposal, how important are each of the following aspects of the proposal. On a scale of 1 to 10 where 1 is not at all important and 10 is very important, how important is it that ...

Respondents were asked to provide feedback about Hawaiian Memorial Park. A majority of O'ahu residents agree that Hawaiian Memorial Park provides positive benefits to the community. A majority of O'ahu residents agree that Hawaiian Memorial Park provides green open spaces and other benefits such as a place for families to gather and visit deceased ones. Six out of ten O'ahu residents agree that Hawaiian Memorial Park should continue to fulfill the burial needs of the local community. Windward O'ahu residents' level of agreement is not statistically different from the opinion of residents in the Other O'ahu communities.

Percent Who Agree with the Listed Benefits and Answered 7 and Above on a Scale of 1 to 10 Where 10 is Strongly Agree

	Total O'ahu	Windward O'ahu	Other O'ahu
Provide green open spaces and visually appealing landscaping for the community	75%	80%	75%
Provide a place for families to gather and visit deceased loved ones	75%	83%	74%
Provide safe and peaceful places for walking and relaxing	54%	59%	52%
Help to preserve open space in the community	58%	65%	56%
Should continue to fulfill burial needs of the local residents	58%	64%	55%

Question: These questions refer to Memorial Parks generally. On a scale of 1 to 10, where 1 strongly disagree and 10 is strongly agree, how strongly do you agree or disagree that Memorial Parks...

A more detailed summary of O'ahu residents' level of agreement of the benefits of Hawaiian Memorial Park to the community are summarized in the following table.

Detailed Agreement Scores with the Listed Benefits

(ROTATE)	Strongly disagree									Strongly agree	Don't know
	1	2	3	4	5	6	7	8	9	10	
Provide green open spaces and visually appealing landscaping for the community	3%	0%	0%	3%	7%	5%	14%	14%	14%	33%	6%
Provide a place for families to gather and visit deceased loved ones	3%	0%	0%	1%	7%	6%	10%	11%	16%	38%	6%
Provide safe and peaceful places for walking and relaxing	2%	0%	2%	2%	9%	7%	13%	13%	14%	31%	7%
Help to preserve open space in the community	3%	0%	0%	2%	7%	8%	10%	14%	16%	33%	7%
Should continue to fulfill burial needs of the local residents	4%	1%	1%	1%	7%	6%	11%	15%	16%	32%	8%

Question: These questions refer to Memorial Parks generally. On a scale of 1 to 10, where 1 strongly disagree and 10 is strongly agree.

Five out of ten O'ahu residents and six out of ten Windward O'ahu residents have a family member or know someone who is interred at Hawaiian Memorial Park. It should be noted that support of the planned Hawaiian Memorial Park expansion is not limited to these residents. Support of Hawaiian Memorial Park expansion is broader than the residents that have a family or know somebody interred there. There is no statistically significant difference between Windward Resident and Other O'ahu residents' responses.

Relative Interred at Hawaiian Memorial Park

	Total O'ahu	Windward O'ahu	Other O'ahu
Yes	53%	63%	50%
No	47%	38%	50%

Question: Do you have family or know someone who is interred at Hawaiian Memorial Park? Excludes Don't know

DEMOGRAPHIC CHARACTERISTICS OF RESPONDENTS

The following tables summarize the demographic characteristics of survey respondents. The demographics have been weighted and balanced to reflect the O'ahu resident population. The only statistically significant variation between Windward O'ahu and Other O'ahu is the higher presence of Hawaiians or Part Hawaiian in O'ahu's Windward community. Twenty percent (20%) of Windward O'ahu respondents are Native Hawaiians or Part-Hawaiian as compared to Other O'ahu at nine percent (9%).

Respondents Age

	Total O'ahu
Under 35 yrs.	16%
35 to 55 yrs.	32%
55 to 69	35%
70 plus	13%

Question: What is your age? Are you...

Respondent Gender

	Total O'ahu
Male	45%
Female	55%

Question: I identify my gender as

Marital Status

	Total O'ahu
Single, never married	26%
Married	54%
Widowed	5%
Divorced or separated	13%
Refused	2%

Question: What is your marital status?

Lived in Current Home

	Total O'ahu
Less than 5 years	24%
6 to 10 years	17%
11 to 20 years	20%
Over 20 years	40%

Question: How long have you lived in your current home?

Years in Hawai'i

	Total O'ahu
Less than 5 years	9%
6 to 20 years	14%
Over 20 years, not lifetime	21%
Lifetime resident	56%

Question: How long have you lived in Hawai'i? Is it...

Employment Status

	Total O'ahu
Employed full time (20+ hours per week)	50%
Employed part time (1-19 hours per week)	8%
Retired	27%
Homemaker	4%
Not employed	7%
Other	2%
Refused	2%

Question: What is your employment status?

Ethnicity

	Total O'ahu	Windward O'ahu	Other O'ahu
Caucasian	23%	29%	21%
Chinese	10%	5%	11%
Filipino	5%	2%	6%
Hawaiian or Part-Hawaiian	11%	20%	9%
Japanese	33%	32%	34%
Other	18%	12%	19%

Question: What is your ethnic background?

RESEARCH METHODOLOGY

SMS undertook a web survey with 400 randomly selected O'ahu residents aged 18 years or older. Data collection took place between March 7 and March 16, 2020. The O'ahu Windward area of O'ahu was oversampled. The Windward side consists of Windward residents living between Waimānalo and Lā'ie. A total of 133 surveys were completed with Windward O'ahu residents providing a margin of error of +/-7 percent at 95 percent confidence interval. Two hundred sixty-seven (267) surveys were completed among randomly, balanced selected residents of O'ahu providing a margin of error of +/-6 percent at 95 percent confidence interval.

SMS professionals weighted the data to reflect the O'ahu resident population utilizing the U.S. Census as a base. The resulting weighted respondent base of 400 O'ahu residents provides a margin of error of +/-5 percent at 95 percent confidence interval.

SMS professionals drafted the survey instrument. After adjustments and pretesting, the survey instrument utilized for this research can be viewed in Appendix A.

APPENDIX

APPENDIX A: SURVEY INSTRUMENT

Hello, my name is _____ from SMS Research, a Honolulu-based research company. We are conducting a confidential public opinion survey and would appreciate a few minutes of your time.

1. Are you a full-time resident of the Island of O'ahu?
 - Yes
 - No (**TERMINATE AND THANKS**)

2. What is your age? Are you... (**SEE QUOTA**)
 - 18 to 24
 - 25 to 34
 - 35 to 39
 - 40 to 44
 - 45 to 49
 - 50 to 54
 - 55 to 64
 - 65 to 69
 - 70-74
 - 75-79
 - 80-84
 - 85+

3. What is your zip code? _____ (**QUOTA QUALIFY OR TERMINATE**)

4. (**RECORD GENDER, DO NOT ASK**)
I identify my gender as _____

5. Are you or any member of your family... (**IF YES TERMINATE**)
 - Yes, employed by local media such as newspapers, television or radio (**TERMINATE**) ...
 - No

6. Have you ever heard of Hawaiian Memorial Park cemetery in Windward, O'ahu?
 - Yes
 - No
 - Not Sure
 - Refused

7. How would you describe general attitude towards Hawaiian Memorial Park?
 - Positive
 - Somewhat position
 - Neutral
 - Somewhat negative
 - Negative
 - Refused

Hawaiian Memorial Park has been a part of Kāne'ōhe since 1958. Currently, 94% of its burial space is sold and no new cemeteries have been built on Oahu since the 1960s. As a result, Hawaiian Memorial is proposing to expand to meet growing needs. The project would be located on 156.5 acres of undeveloped land owned by Hawaiian Memorial, adjacent to its current cemetery. It would include 28.2 acres of new cemetery space and the establishment of a 14.5-acre preserve to protect significant cultural sites on the property. If approved, all 156.5 acres, including the new cemetery area, cultural preserve, and remaining open space would be placed in a perpetual conservation easement prohibit future development on Hawaiian Memorial's property.



Project Highlights:

- Only 18% of parcel to be used for cemetery (28.2 acres of 156.5 acres)
- 14.5 acre cultural preserve to be established in partnership with Ko'olaupoko Hawaiian Civic Club
- Approx. 125 acres will remain open space
- Entire 156.5 acres to be placed in conservation easement with the Hawaiian Islands Land Trust to ensure no further development
- Minimum 150-foot buffer from nearest homes
- Approx. 2,000-foot buffer from Pohai Nani
- 100 year storm mitigation measures to improve drainage and storm water runoff
- Addresses dwindling supply of interment space on Oahu

8. Based on the information provided, what is your position on Hawaiian Memorial Park's proposal?

- Support
- Somewhat support.....
- Neutral
- Somewhat negative
- Negative.....
- Refused

9. What most influenced your position on the proposal?

10. Reviewing again the Hawaiian Memorial Park proposal, how important are each of the following aspects of the proposal. On a scale of 1 to 10 where 1 is not at all important and 10 is very important, how important is it that ...

(ROTATE)	Not at all important										Very Important	Don't know	Refused
	1	2	3	4	5	6	7	8	9	10			
Only 18% of the project area will be used as a cemetery (28.2 acres of 156.5 acres) with 82% for open space and cultural preservation	<input type="radio"/>	<input type="radio"/>	<input type="radio"/>	<input type="radio"/>	<input type="radio"/>	<input type="radio"/>	<input type="radio"/>	<input type="radio"/>	<input type="radio"/>	<input type="radio"/>	<input type="radio"/>	<input type="radio"/>	<input type="radio"/>
A 14.5-acre cultural preserve will be established in partnership with a windward native Hawaiian community organization	<input type="radio"/>	<input type="radio"/>	<input type="radio"/>	<input type="radio"/>	<input type="radio"/>	<input type="radio"/>	<input type="radio"/>	<input type="radio"/>	<input type="radio"/>	<input type="radio"/>	<input type="radio"/>	<input type="radio"/>	<input type="radio"/>
Approximately 125 acres will remain open space forever.	<input type="radio"/>	<input type="radio"/>	<input type="radio"/>	<input type="radio"/>	<input type="radio"/>	<input type="radio"/>	<input type="radio"/>	<input type="radio"/>	<input type="radio"/>	<input type="radio"/>	<input type="radio"/>	<input type="radio"/>	<input type="radio"/>
The entire 156.5 acres owned by Hawaiian Memorial Park will be placed in a conservation easement to ensure no further development will ever occur on the property	<input type="radio"/>	<input type="radio"/>	<input type="radio"/>	<input type="radio"/>	<input type="radio"/>	<input type="radio"/>	<input type="radio"/>	<input type="radio"/>	<input type="radio"/>	<input type="radio"/>	<input type="radio"/>	<input type="radio"/>	<input type="radio"/>
There will be a minimum 150-foot buffer from nearest homes	<input type="radio"/>	<input type="radio"/>	<input type="radio"/>	<input type="radio"/>	<input type="radio"/>	<input type="radio"/>	<input type="radio"/>	<input type="radio"/>	<input type="radio"/>	<input type="radio"/>	<input type="radio"/>	<input type="radio"/>	<input type="radio"/>
There will be an approximate 2,000-foot buffer from Pohai Nani senior residences.	<input type="radio"/>	<input type="radio"/>	<input type="radio"/>	<input type="radio"/>	<input type="radio"/>	<input type="radio"/>	<input type="radio"/>	<input type="radio"/>	<input type="radio"/>	<input type="radio"/>	<input type="radio"/>	<input type="radio"/>	<input type="radio"/>
There will be 100-year storm mitigation measures to improve drainage and storm water runoff	<input type="radio"/>	<input type="radio"/>	<input type="radio"/>	<input type="radio"/>	<input type="radio"/>	<input type="radio"/>	<input type="radio"/>	<input type="radio"/>	<input type="radio"/>	<input type="radio"/>	<input type="radio"/>	<input type="radio"/>	<input type="radio"/>
The addition of new burial space will address the dwindling supply of interment space on O'ahu for the aging population.	<input type="radio"/>	<input type="radio"/>	<input type="radio"/>	<input type="radio"/>	<input type="radio"/>	<input type="radio"/>	<input type="radio"/>	<input type="radio"/>	<input type="radio"/>	<input type="radio"/>	<input type="radio"/>	<input type="radio"/>	<input type="radio"/>
The new area will provide green open space and visually appealing landscaping for the community	<input type="radio"/>	<input type="radio"/>	<input type="radio"/>	<input type="radio"/>	<input type="radio"/>	<input type="radio"/>	<input type="radio"/>	<input type="radio"/>	<input type="radio"/>	<input type="radio"/>	<input type="radio"/>	<input type="radio"/>	<input type="radio"/>

11. These questions refer to Memorial Parks generally. On a scale of 1 to 10, where 1 strongly disagree and 10 is strongly agree, how strongly do you agree or disagree that Memorial Parks...

(ROTATE)	Strongly disagree										Strongly agree	Don't know	Refused
	1	2	3	4	5	6	7	8	9	10			
Provide green open spaces and visually appealing landscaping for the community	<input type="radio"/>	<input type="radio"/>	<input type="radio"/>	<input type="radio"/>	<input type="radio"/>	<input type="radio"/>	<input type="radio"/>	<input type="radio"/>	<input type="radio"/>	<input type="radio"/>	<input type="radio"/>	<input type="radio"/>	<input type="radio"/>
Provide a place for families to gather and visit deceased loved ones	<input type="radio"/>	<input type="radio"/>	<input type="radio"/>	<input type="radio"/>	<input type="radio"/>	<input type="radio"/>	<input type="radio"/>	<input type="radio"/>	<input type="radio"/>	<input type="radio"/>	<input type="radio"/>	<input type="radio"/>	<input type="radio"/>
Provide safe and peaceful places for walking and relaxing	<input type="radio"/>	<input type="radio"/>	<input type="radio"/>	<input type="radio"/>	<input type="radio"/>	<input type="radio"/>	<input type="radio"/>	<input type="radio"/>	<input type="radio"/>	<input type="radio"/>	<input type="radio"/>	<input type="radio"/>	<input type="radio"/>
Help to preserve open space in the community	<input type="radio"/>	<input type="radio"/>	<input type="radio"/>	<input type="radio"/>	<input type="radio"/>	<input type="radio"/>	<input type="radio"/>	<input type="radio"/>	<input type="radio"/>	<input type="radio"/>	<input type="radio"/>	<input type="radio"/>	<input type="radio"/>
Should continue to fulfill burial needs of the local residents	<input type="radio"/>	<input type="radio"/>	<input type="radio"/>	<input type="radio"/>	<input type="radio"/>	<input type="radio"/>	<input type="radio"/>	<input type="radio"/>	<input type="radio"/>	<input type="radio"/>	<input type="radio"/>	<input type="radio"/>	<input type="radio"/>

|

12. Do you have family or know someone who is interred at Hawaiian Memorial Park?

- Yes
- No
- Don't know

13. What is your marital status?

- Single, never married.....
- Married.....
- Widowed
- Divorced or separated
- Refused

14. How long have you lived in your current home?

- Less than 5 years
- 6 to 10 years
- 11 to 20 years
- Over 20 years
- Don't know/Refused.....

15. What was the total estimated income of all adults in your household, before taxes, in the year 2019? (WAS IT...)

- Less than \$10,000
- \$10,000 to \$14,999
- \$15,000 to \$24,999
- \$25,000 to \$34,999
- \$35,000 to \$49,999
- \$50,000 to \$74,999
- \$75,000 to \$99,999
- \$100,000 to \$150,000
- More than \$150,000
- Don't know/Refused.....

16. How long have you lived in Hawai'i? Is it...

- Less than one year.....
- 1 to 5 years.....
- 6 to 10 years.....
- 11 to 20 years.....
- Over 20 years, not a lifetime
- Lifetime resident of Hawai'i
- Don't know/Refused

17. What is your ethnic background? (DO NOT READ LIST, ACCEPT 1 ANSWER)

- Caucasian
- Chinese
- Filipino
- Hawaiian or Part-Hawaiian.....
- Japanese
- Korean
- Samoaan
- Black or African-American
- Hispanic or Latino.....
- Mixed, Not Hawaiian
- Other.....
- No answer/Refused.....

18. What is your employment status?

- Employed full time (20+ hours per week).....
- Employed part time (1-19 hours per week)
- Not employed, looking for work
- Not employed, not looking for work.....
- Retired
- Homemaker
- Student
- Other (specify): _____
- Don't know/Refused

Thank you again for your participation. Bye.

APPENDIX B: OPEN-ENDED RESPONSES

Appendix B-1: Support Open-Ended

- I'd like it to continue in any way possible
- Relatives buried in the park, I'll be buried in the park, space is limited, must open up more for future burials
- Proposal seems reasonable
- Conservation easement, buffer from neighboring homes
- It is on undeveloped land, looks like a good place to expand
- That we have a need for more space for Memorial Parks
- Need for more space
- The 100 yr. water mitigation. Also, buffer zone between homes and Pohai Nani.
- Relatives are buried there
- Expansion plan and the need for it
- It's emphasis on keeping much of the land as open, undeveloped land; consideration given to cultural issues/concerns; distance from the residential areas.
- They already own the land
- Keeping cultural preserved
- Need more burial sites
- More burial plots are needed as CD the proposal will be great
- Society needs these types of spaces.
- They were going to protect the cultural sites
- The need for burial space plus protection of a large area of habitat
- Where else are you going to bury more people
- Need for more interment space on O'ahu
- The cemetery owns the land and from my perspective, should be able to do what it wants with it.
- Desire to be buried and not burned.
- I like the idea behind it
- The need for more burial plots
- Land is set aside that will not be developed as well as a preserve
- Land is expensive so since Hawaiian Memorial Park owns the parcels, it's good for them to expand.
- The company owns the land
- Have family plots at Hawaiian Memorial cemetery...beautiful, peaceful location
- We need more space to bury people
- My parents have been interred there, and I go monthly to visit and put flowers in their vase. The park is well kept, well maintained, and workers are always cleaning and mowing, and removing dried flowers. I have seen other neglected cemeteries, and feel that families deserve to have their loved ones in a place like this.
- The cultural preservation and storm mitigation initiatives were the most significant to me.
- The proposal seems reasonable.
- Rather they expand out other than resell plots. I have love ones buried there paid in full.
- Good to see here
- Protection of land and establishment of preserve.
- The space is needed
- Environmental
- Because we need more memorial parks and if there's the space to do so then why not!!
- The conservation proposals

- I don't see a problem with the proposed plan. It is not like they are building new homes or high-rise apartments in the proposed area. It would have minimal impacts on the neighbors and anyone complaining about it is only being selfish.
- Dedication
- The need for burial sites on the windward side.
- I have family buried there
- Please prohibit development and needs of the community
- I like that there will be priority placed on preservation of the land
- Because it's good for everyone.
- The beauty
- Maintaining green space
- The fact that only a small portion of the expansion would be utilized for the cemetery while the major portion would be maintained/used for the preserve.
- Need for more burial plots
- I have a lot of family that wants to be buried there.
- Need for burial plots.
- It is a great proposal as a native Hawaiian I support it
- Very good
- The whole thing.
- Like what it is
- Hawaiian Memorial takes pride with cemetery and I like the idea of the cultural preserve
- I like it its good
- Everything
- Because there is a big need for it and no one using it any ways
- No one else interested in the land
- Like good great
- Hawaiian Memorial has been there for a long time and being said that no other parks are being built than why not?
- People want more place to rest their soul and there seems to be no space for that in a small island like O'ahu.
- Kaneohe is always nice
- I think we should protect what lands that we can.
- It is going to preserve the land for the future
- I love it I enjoy it
- It is unique and good to use for environment
- That some land would be untouched for development purposes since that's a huge issue & the growing concern that there aren't any spots available for additional cemetery plot
- It's an expansion of an established cemetery property and it's on undeveloped land that is kind of put out of the public's view those visiting will have quiet semi private space to visit those loved ones and I feel it's more fulfilling when you have a little space out of the public's view to spend time with your loved ones of all the strong emotions that can present themselves I feel its best out of the public's eye.
- I like
- That there hasn't been additional cemetery area in decades.
- Most of the land is still held by Hawaiian trust and further development will not be tolerated
- Information
- The beauty
- It would be good to do so you can have a burial area for veterans
- It seems like a fluid extension and the land is already owned by Hawaiian Memorial. Will also provide additional burial sites.
- My family is buried there and I would like a place where my family can lay to rest in the future.
- The culture preserve looks really interesting
- We need spaces for our people after they pass away.

- Cultural considerations
- It's good project
- Protect sacred land!
- In the coming years where do we bury our dead? What an ideal situation when the dead of the past meets the dead of the future. I am sure that during construction, utmost care will be taken to protect the bones already interred in the ground.
- The honored have a place to be
- The cemetery is beautiful.
- Preservation land
- If they approved it, whatever is being built in the 156.5 acres of land will have to be put on hold in a perpetual conversation easement prohibit future on the Hawaiian property
- It would keep the land from being built up. It would beautify it and still provide for conservation area.
- The land is currently not used and a cemetery is a good neighbor
- Need for interment space, rational and sociable proposal.
- Like the ad mentioned, no new cemetery has been built in a long time. The mortuary will be huge.
- The promised preservation of the land after development.
- Better than housing
- Convenient location and we need room for cemeteries.
- Not entire project going toward new plot preserving a lot for cultural use
- That there is no room for burials
- Need
- The provision for preservation of historical sites and the layout of the site.
- Expansion is necessary for the dead
- Preserving open space.
- People want to be buried. Then they need more space readily available.
- Good and nice
- Don't see anything negative that stands out. Do not know enough to make an informed decision though.
- Only 28 of 156 acres are to be used as cemetery while the remainder is to be permanently a conservation and cultural preserve
- I don't see anything wrong with the proposal, but I haven't heard the opposition.
- The use of only 28+ acres to be used for the cemetery and the establishment of the cultural preserve.
- I love Hawai'i
- Easement for cultural purpose
- Easement allowed
- Open space, distance to nearest residence, no tall structures next to existing cemeteries.
- It preserves cultural land, and addresses the need for more burial space
- That it's currently 94% full and we have a large population of seniors.
- We need it.
- Benign use of property
- The area is good for this purpose and we need to have it
- The plan leaves wide open space and reservation land to prevent future development
- Preserved land area
- For Native Hawaiians
- Mitigation proposed, buffers, preserve conservation land, and the need for more memorial spaces on O'ahu.
- Out of respect for those passing on
- It is needed and seems like it would be used properly
- They have the land
- More land for burial
- Cultural sites; can't be sold
- Running out of cemetery space
- Need more buried sites on the island

- Sounds like it makes sense!
- It is an existing memorial park. Given the need for more space, it is logical to use existing land adjacent to the memorial park. I have family members buried there and I see the need for additional space.
- Lack of cemeteries, keeps urban development at bay in that zone.
- I think there is a need and if it is cool with Hawaiian Lands then why not?
- Good to remember the past
- Almost full
- No development of land beyond those described.
- Keeping a lot of open space
- Seems like something that is needed
- It does not crowd the residential area.
- Needed
- The point made of preserving cultural/historic/sacred lands from any expansion.
- Need for cemetery
- I would be all for it, if only the current operators of the park would better maintain what is already occupied with "clients". Also, there seems to be a lot of "clients" from other parts of the world who are being buried on this island. I would think some of them would want to be buried in their "homeland", but understand the cost would be prohibitive. I know and understand these people have made Hawai'i their home, still...
- Good
- It seems to be thought out with consideration to preserving the land and any historical areas.
- Requirement for more cemetery land
- Some land will be preserved from development
- Undeveloped land to be made useful
- Need more options for burials on O'ahu
- Keeping a large portion of land in preserve and unused
- Preserving important land.
- 100-year storm mitigation
- Looks like a good plan
- Need for more space for the memorial park
- It sounds like it will provide more area for the grounds
- Good proposal
- The need of more space
- Currently unused land would be put to use but still preserve natural features
- Dying is inevitable and we need a place to bury our loved ones.
- The space is needed
- Enough space to make new plots.
- No new cemeteries were built since 1960s.
- Much needed and appears well-planned.
- Not using all of the land as a cemetery.
- I think loved ones have to be buried somewhere and locating it with the existing cemetery makes sense.
- The proposal seems like it is well thought out
- That there will be people in charge of making sure there is no further development.
- It is needed and it is kept up beautifully
- My family is buried here
- The fact that no new cemeteries have been built
- Need for burial sites
- It's inevitable that we will all die... But when that time comes where will we be laid to rest? I only support the idea somewhat because if we're just utilizing the "top" of the land, what happens when we eventually run out of land to utilize?! So instead of waiting till that happens, I feel that the procedures concerning burial plots & such need to be readjusted with the state & federal laws & regulations, to accommodate for the preservation of our land. Instead of "double-dipping" a burial plot allow for 4 to be within a plot?!

Long story short, find a solution that goes deeper rather than spread across the limited land that we have. And allow H. M a portion of what they're asking for but not that entire amount.

- It is a great idea however I have not fully read up on the project to give other than "it is a supportable" project. Thus the "Somewhat Support" answer.
- There is a need for space. Windward is a beautiful place to have your loved ones be placed.
- Neighbors
- Pressing need for burial space on O'ahu.
- Demand
- The area
- The map was helpful to see
- Making a conservation area
- There is a need for expansion.
- You
- We need to honor our dead
- There seems to be a need for an expansion
- That they are setting aside land for conservation area
- State need for space
- Provides a reasonable use of the land. Does not impinge on existing neighborhoods. Avoids increasing crowding.
- Design project
- Much of the adjacent property will be preserved (I hope so). More locals are passing away but many are also having their ashes tossed into the Pacific Ocean.
- If no one is using it might as well put to use
- The land to be conserved for wild life
- The fact that the proposed land is adjacent to the existing cemetery
- My family owns plots at the Hawaiian Memorial Park cemetery. We see no potential problems involved with the proposed expansion.
- We do need to create more burials for the deceased and it supports the native people also
- Location
- The need for more burial space
- I have family buried in the park. If it could make room for the rest of us that would be good.
- The thought to keep and preserve the sight
- It's honoring our loved ones in a unique way and place
- The conservation and that it is working with the Hawaiian Civic Club
- It sounds that most of the spots are purchased. It provides cultural history and a place for burial.
- There isn't going to be anywhere for my son to be buried when he is old. There may not even be a space for my husband and myself at this rate.
- It's still preserving green space
- Some land set aside
- The fact that the proposal seems to have mostly good results.
- Yes, Hawai'i has many people and many of them would use Hawaiian Memorial Park cemetery. Also, I've recently been there and I know that there is already a lot of graves. So, I do think it is time for that location to expand.
- Agreement to put majority in preservation.
- To me, burial and dealing with death is important for families. Having the ability to provide the space to do so is very important.
- More land for future plots
- Needed
- The demand is increasing and space is filling up so this expansion would be a not so bad option to go forward with.
- The fact that they say there is no new cemeteries being built.
- Lack of cemetery available plots

- It doesn't affect me but seems like a good idea
- Elapsed time since last expansion of burial sites
- Nature
- The space it would occupy
- The need for more cemetery plots but also concerned about the preservation on land
- That a major portion will be preserved and not developed
- Hawaiian Memorial has been taking care of the land so there's no sense changing to other people
- The unused acreage that could be used for other purposes open to the public like parks and open spaces. They're trying to get more land than they need or plan to use
- Need sound reasonable preserve land
- More people dying
- A nice place to visit lost ones, after they have left this world
- The location but not sure whether that much space is necessary. I believe other memorials can also expand their land just by a little more or add another building to increase more storage room.
- Need more cemetery space
- Preservation of land. Long term plans. Keeping some land untouched.
- Adding more space due to the growing demand
- Need and position of the company
- The fact that they are ensuring no future development
- Only a portion of the land will be used for the cemetery and remaining land will be built on. It will keep the Kaneohe side open without tall buildings.
- I like that space will be left open and that there is a buffer.
- It sounds like it would be a win-win situation for most people. And if they already own the land, technically they can do whatever they feel is necessary without asking the public. But with most issues, it's always best to get feedback from the surrounding communities.
- No new memorials since the 60s
- Buffer zones, Storm drainage proposals.
- Past experience with Memorial staff
- It's a cemetery
- We need the space in O'ahu to expand for our deceased loved ones and for the properties to be nice and clean
- That there would be more space for loved ones to be buried near home, not far away from their families. Also, there would be a conservation area for cultural purposes so that part would be preserved.
- More spacious
- Preservation land in perpetuity
- No further development.

Appendix B-2: Neutral Open-Ended

- Landscape
- Unfriendly management
- The need to address needs of aging population
- Eventually cemeteries will be overcrowded. Expanding the cemetery is only a temporary fix. Cemeteries need to find a more efficient way to use space for the deceased.
- I have no attachment to this parcel
- Like more cemetery availability, but homes?
- Because I live in Central O'ahu, I probably won't be planning to use their services. Opinions of residents living in that area, or persons intending to use their services, would be more suited to give an opinion.
- I do not know how the residents of Kaneohe feel about the proposed development. It will affect the traffic in the area since the current cemetery already cause some inconvenience to the residents and others transitioning in the area.
- It's of little concern to me, only the cultural sites interest me at all.
- I do not have enough information to make a stance. (i.e., What the petition land is currently like/used for. Is their history of the land. Were there any other projects in mind for the land. What the surround area is like. What the immediate pros and cons might be. What the future projections of pros and cons might be. Are there other lands in mind. Why the petition land being opposed is also not clear.)
- Not my neighborhood. I think more people should plan for cremation but if they don't, we'll need space.
- Too close to the neighborhood homes
- Need another cemetery
- Worry about environment changes as well as upkeep of cemetery after it has been expanded and sold
- More space for the deceased
- I don't really care what they do with their own private land as long as it doesn't really impact other people negatively
- Have no interest
- Does not affect me personally. Don't live near there.
- I don't like or dislike this proposal.
- Not familiar with anything on the Windward side of the islands.
- I think it is a good idea
- Whatever they decide to do doesn't really matter to me.
- Ok
- Various alternatives
- It is within their land, so they should be able to adjust the design as needed
- Well, I don't live there and it's good to get input from the neighborhood board and residents that this change will affect. For me I don't see anything wrong with the plan, except it could be a little more away from homes and Pohai Nani. Living near a cemetery isn't really comforting to me, so the farther away it is much better. But the plans for expansion is needed by community, so there might be a good response from neighborhood board meetings. I know the cemetery will be kept in good condition and well cared for, so no problems about it for expansion.
- Well I think that they have enough area already
- I don't live on that side of the island, so it doesn't impact me.
- Land is just so sacred
- We should focus on homeless
- That they will be using nature reserve lands.
- Positive to create internment spaces. Negative to neighborhood and environment.
- Proximity to homes
- Cost
- I'm a retired military, I think I'm eligible to get a lot next to the new cemetery
- I would need to study more about the proposal and learn more about the surrounding area.

- It's difficult to conceptualize the project from just a map and written description. Need to know what prior agreements were made with the surrounding neighborhood. Prior to the time they bought their homes did neighbors know (or should they have known) that expansion of the cemetery was a possibility. Are there alternative sites for a cemetery in the area?
- Help preserves
- I am unsure at the moment because one way it's good because there will be more areas to bury people but using undeveloped land to extend the cemetery seems wrong
- Sounds like it is needed but would like more info on how it will impact the surrounding community
- Do not live in that area
- If making the place means that they do not ruin any of the history of the place then there shouldn't be a problem with changes that is being made.
- We shouldn't do it

Appendix B-3: Opposed Open-Ended

- Loss of undeveloped land
- We need more living space rather than burials. Maybe you can build a building to store ashes if it's such a big deal to make more burials.
- Reduction in residential/business use of property
- It seems too close to houses
- Usage of land
- Seeing stories in the news about how the residents in the area are not supportive.
- Too much wasted land on dead people
- Our family purchased plots at the cemetery and now family members just don't go to the grave. On second thought we feel that we want to be cremated and have our ashes scattered. Many families moved to the mainland and nobody visits the grave. I feel we don't need more land for burial sites.
- I used to live in Kaneohe, don't want to see more land taken away
- Amount of land to be cleared.
- Not the best use of the property
- What influenced my position on the proposal, is after I looked at the plan layout and read that it would be facing the cemetery and the construction might overlap parts of the cemetery, that was enough for me to not fully support this plan anymore.
- That not a lot of it would be used for cemetery purposes.
- Seems so close to homes
- Land preservation
- Expansion of this memorial park can be distributed to cultural preserves
- It is unfair
- Just read
- Lack of headstones on gravesites. Ignorant to not allow somebody's monument of life to represent their individuality. Hawai'i is a bunch of con-artist money whores. Some are okay though.
- I think that cemeteries should be located in a more remote area or mainly by the ocean.
- My own opinion is that land is scarce and valuable. Hawaiian Memorial lands (it holds presently) should be used wisely by expanding in other ways, not physically outward onto conservation land. Japan has innovated ways cemeteries do things; it is not entrenched in old ways of thinking.
- No land should be used for burial. Cremate and put ashes in your living room.
- Infringement of conservation/cultural area and deforestation
- Community response to proposal
- Location
- Our green space is always being threatened by development. Also, burials are not environmentally friendly. I understand the attachment to certain methods of disposing of the body traditionally (e.g., Coffin in the ground, cremation, etc.), but there are more modern ways of providing services for the dead that take up less space and can save our environment and land. I would encourage research and promotion of alternatives to more graveyards.
- I believe people should be cremated and their ashes scattered. I don't support the idea of burial in a cemetery because after a while, survivors themselves die, and the graves become unattended and it's a waste of valuable land.
- Leave as is.
- I think that the land is very sacred. It is not appropriate to develop a graveyard on land that was very cherished by Native Hawaiians. It seems like this plan would take up a lot of land and disrupt a lot of natural habitats. If I was asked my true opinion, I would say that I am strongly opposed to this proposal. I think cemeteries should build up rather than across land. I think they should maybe plan to build up (buildings) rather than developing across land. That way, they can still make money and natural ecosystems and habitats will be maintained.
- The size of the expansion



Sumner J. Waring, III
Senior Vice President, Chief Operating Officer
jay.waring@sci-us.com

May 1, 2020

Mr. Jonathan Scheuer, Chair
State of Hawai'i Land Use Commission
State Office Tower
Leiopapa A Kamehameha
235 South Beretania Street, Room 406
Honolulu, Hawai'i 96813
Attn: Daniel E. Orodener, Executive Officer

RE: A17-804, Hawaiian Memorial Life Plan, Ltd.

Chair Scheuer and Land Use Commissioners,

I am writing on behalf of Service Corporation International (SCI), the ultimate parent of its affiliate Hawaiian Memorial Life Plan, Ltd. Dba Hawaiian Memorial Park.

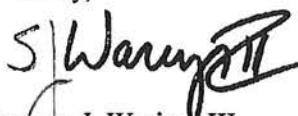
SCI recognizes that the global coronavirus pandemic has had severe economic impacts across the country and especially in Hawaii. Despite these challenges, SCI wishes to assure the Land Use Commission that we remain steadfast in our support for the Hawaiian Memorial Park Cemetery Expansion project.

At SCI, we are deeply committed to supporting the communities that we serve. As part of this core principle, we want to be clear that this project has, and will continue to be, "shovel-ready". SCI is financially strong and is absolutely committed to begin construction immediately upon receiving the necessary approvals.

Our investment in this project is intended to benefit the community at a time when it is most needed by providing local job opportunities amidst record level unemployment, increased spending in the community for local businesses, and vital increases in tax revenue for the state and the city.

We greatly appreciate the Land Use Commission's thoughtful consideration of the petition for the Hawaiian Memorial Park's expansion plan.

Sincerely,



Sumner J. Waring, III

Enclosure

DAVID Y. IGE
GOVERNOR



STATE OF HAWAII
DEPARTMENT OF TRANSPORTATION
869 PUNCHBOWL STREET
HONOLULU, HAWAII 96813-5097

JADE T. BUTAY
DIRECTOR

Deputy Director
LYNN A.S. ARAKI-REGAN
DEREK J. CHOW
ROSS M. HIGASHI
EDWIN H. SNIFFEN

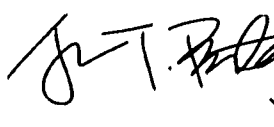
IN REPLY REFER TO:
HWY-PS 2.2236

February 12, 2020

TO: MARY ALICE EVANS, DIRECTOR
OFFICE OF STATE PLANNING

FROM: JADE T. BUTAY
DIRECTOR OF TRANSPORTATION

SUBJECT: LAND USE DISTRICT BOUNDARY AMENDMENT, A17-804
CONSERVATION TO URBAN
HAWAIIAN MEMORIAL PARK CEMETARY
OAHU, KOOLAUPOKO, KANEOHE, TMK (1) 4-5-033: POR. 001



In our letter dated September 6, 2019 (attached), the Department of Transportation (DOT) submitted the following comment relating to the land use district boundary amendment for the Hawaiian Memorial Park Cemetery in Kaneohe, Oahu:

“In addition, DOT requests consideration for a condition that the petitioner should be required to participate in the construction of a traffic signal and associated improvements on a pro-rata basis, based on its percentage of estimated contribution of traffic if DOT were to construct a traffic signal at one of the entrance intersections to the cemetery.”

DOT has since estimated the project's percentage contribution of traffic to be approximately 2% of total future year 2040 traffic at the intersection of Kamehameha Highway and Halekou Road. Since, the project's estimated pro-rata share is negligible, the above recommended condition is no longer necessary.

If you have any questions, please contact Jeyan Thirugnanam, Systems Planning Engineer, Highways Division, Planning Branch at (808) 587-6336 or by email at jeyan.thirugnanam@hawaii.gov. Please reference file review number PS 2018-002.

Attachment

JT: rb

bc: STP, HWY-PS (2018-002)

EXHIBIT 58

BEFORE THE LAND USE COMMISSION

OF THE STATE OF HAWAII

In the Matter of the Petition of) DOCKET NO. A17-804
)
HAWAIIAN MEMORIAL LIFE PLAN, LTD.) HAWAIIAN MEMORIAL LIFE
) PLAN, LTD.
To Amend The Conservation Land Use)
District Boundary Into The Urban Land Use)
District For Approximately 53.449 Acres Of)
Land At Kāneʻohe, Island of Oahu, State of)
Hawai`i, Tax Map Key: (1) 4-5-033: por. 001)
_____)

CERTIFICATE OF SERVICE

I hereby certify that an unmarked file of the foregoing document was duly served upon the following AS INDICATED BELOW on May 6, 2020.

DAWN TAKEUCHI-APUNA, ESQ.
Deputy Attorney General
Department of the Attorney General
425 Queen Street
Honolulu, Hawai`i 96813

CERTIFIED MAIL
RETURN RECEIPT
REQUESTED

MARY ALICE EVANS, DIRECTOR
Office of Planning, State of Hawai`i
235 South Beretania Street
Room 600, Leiopapa A Kamehameha Bldg.
Honolulu, Hawai`i 96813

CERTIFIED MAIL
RETURN RECEIPT
REQUESTED

KATHY K. SOKUGAWA, ACTING DIRECTOR
City and County of Honolulu
Department of Planning and Permitting
650 South King Street, 7th Floor
Honolulu, Hawai`i 96813

CERTIFIED MAIL
RETURN RECEIPT
REQUESTED

PLANNING COMMISSION
City and County of Honolulu
650 South King Street, 7th Floor
Honolulu, Hawai'i 96813

CERTIFIED MAIL
RETURN RECEIPT
REQUESTED

PAUL S. AOKI, ESQ.
Acting Corporation Counsel
City and County of Honolulu
Department of Corporation Counsel
530 South King Street, Room 110
Honolulu, Hawai'i 96813

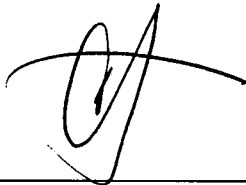
CERTIFIED MAIL
RETURN RECEIPT
REQUESTED

HUI O PIKOILOA, an unincorporated
Association, LIANNE CHING, BETTYE
HARRIS, RICHARD MCCREEDY, JULIANE
MCCREEDY, JESSE REAVIS, and
GRANT YOSHIMORI
c/o 45-464 Lipalu Street
Kaneohe, Hawai'i 96744

CERTIFIED MAIL
RETURN RECEIPT
REQUESTED

DATED: Honolulu, Hawai'i, May 6, 2020.

Of Counsel:
MATSUBARA, KOTAKE & TABATA
A Law Corporation



BENJAMIN M. MATSUBARA
CURTIS T. TABATA
Attorneys for Petitioner
HAWAIIAN MEMORIAL LIFE
PLAN, LTD.