

9/21/89

JOHN WAIHEE  
GOVERNOR



ALEXIS T. LUM  
MAJOR GENERAL  
ADJUTANT GENERAL

MYLES M. NAKATSU  
COLONEL  
DEPUTY ADJUTANT GENERAL

STATE OF HAWAII  
DEPARTMENT OF DEFENSE  
OFFICE OF THE ADJUTANT GENERAL  
3949 DIAMOND HEAD ROAD, HONOLULU, HAWAII 96816-4495

September 21, 1989

Engineering Office

Mr. Donald Botelho  
Vice President  
Hawaiian Memorial Park  
Cemetery Association  
45-425 Kamehameha Highway  
Kaneohe, Hawaii 96744

Dear Mr. Botelho:

Hawaii State Veterans Cemetery  
Project No. OVS-64-203-1989

In reference to your letter dated August 22, 1989, we are providing you the following comments:

1. "Signage at Kamehameha Highway entrance to HMPC leading to the Veterans Cemetery and at the Veterans Cemetery leading to HMPC extension."  
Reply: Our planned "location and directional" sign at Kamehameha Highway will be located on State Department of Transportation right-of-way. The sign will be installed in Phase IB.
2. "Kamehameha Highway traffic patterns for cemetery ingress and egress."  
Reply: The traffic patterns at Kamehameha Highway intersection will remain basically the same. We plan to install traffic signals in Phase II.
3. "HMPC roadway useage plan during construction and on a regular service basis."  
Reply: As previously coordinated with your office, we informed the Contractor of his responsibilities as stated in the enclosure.



EXHIBIT "47"

4. "HMPC roadway upgrading and maintenance to meet the Veterans Cemetery service and long term needs, i.e., to accommodate traffic volume and heavy vehicular and equipment use."

Reply: As previously stated, we foresee a need for a use agreement on the maintenance and repair of the HMPC access road from the Kamehameha Highway intersection to the end of the proposed 44' easement through our property. Coordination for this agreement can begin in early 1990.

5. "Selecting appropriate boundary markers, dividers or fence separating the Veterans Cemetery from HMPC that would be aesthetically pleasing and facilitate operation and maintenance requirements."

Reply: We will be designing a 3' high moss rock wall along the boundary line between HMPC and the HSVC.

6. "Identify Veterans Cemetery operating and maintenance needs for specialized or select products and services which could be furnished on a cost effective basis by private cemeteries. This may be temporary or on-going. An early discussion of the subject would afford interested cemeteries advance notice to plan accordingly."

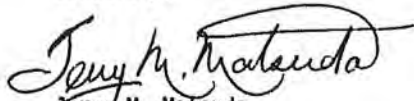
Reply: The Office of Veterans Services will be identifying the operations and maintenance requirements for the Hawaii State Veterans Cemetery.

7. "Coordination of security measures including the daily opening and closing of the cemetery."

Reply: During the construction period, it is the Contractor's responsibility to secure the area. The Office of Veterans Services will be managing the facility once it is open to the public and security issues will be coordinated by them.

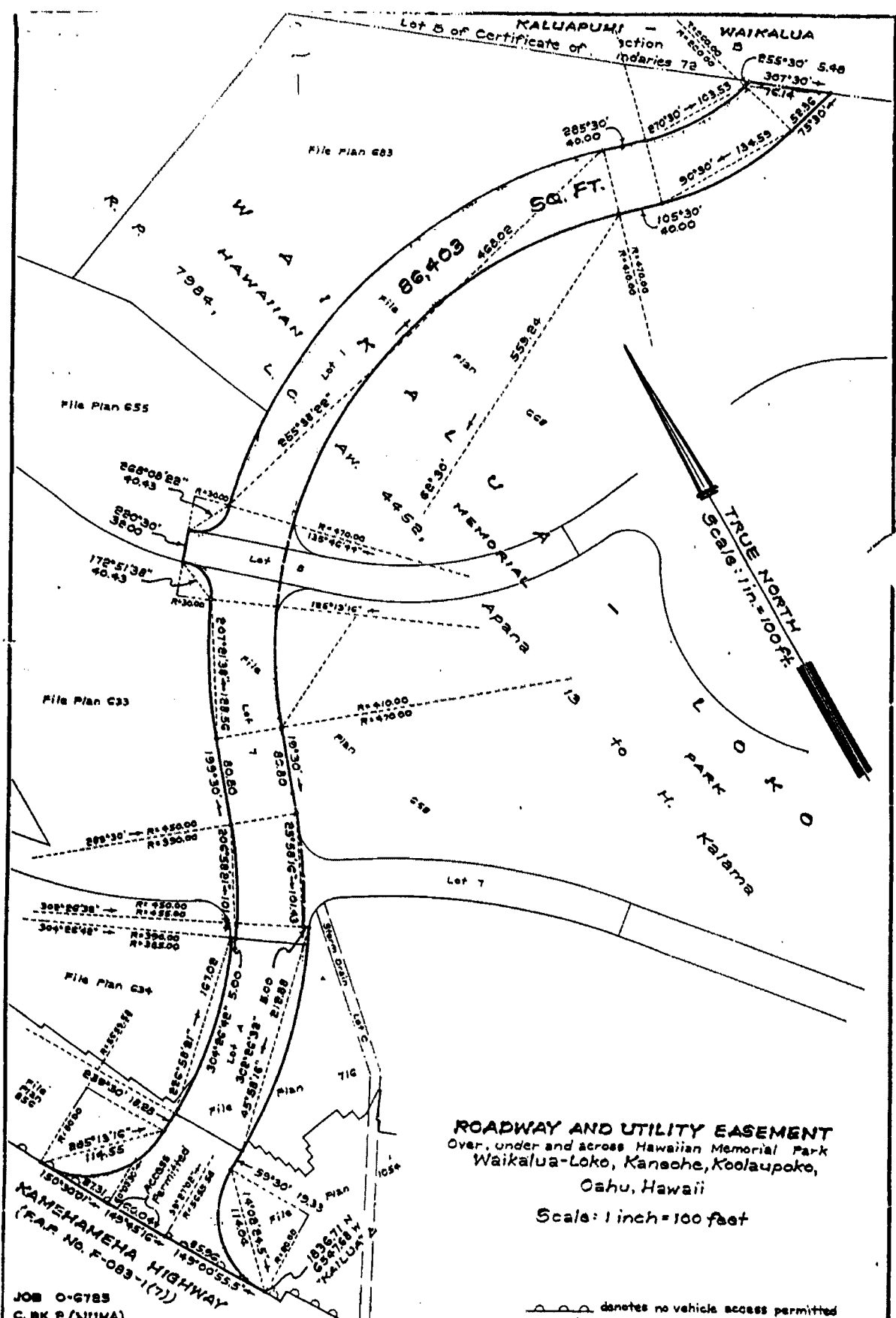
We appreciate your cooperation in the execution of this project and will coordinate all design and construction issues that may affect you with your office and/or your designated representative.

Sincerely,



Jerry M. Matsuda  
Lieutenant Colonel  
Hawaii Air National Guard  
Contracting & Engineering Officer

cc: Adjutant General  
Office of Veterans Services  
M & E Pacific, Inc.  
Community Planning Inc.



**ROADWAY AND UTILITY EASEMENT**  
 Over, under and across Hawaiian Memorial Park  
 Waikalua-Loko, Kanohe, Koolaupoko,  
 Oahu, Hawaii  
 Scale: 1 inch = 100 feet

~~~~~ denotes no vehicle access permitted  
 - - - - - denotes access permitted

JOB O-6785  
 C. BK 2 (NUHA)

TAX MAP 4-5-34

SURVEY DIVISION  
 DEPARTMENT OF ACCOUNTING AND GENERAL SERVICES

STATE OF HAWAII

APR 7 1975

R.K. Dec. 26, 1974

C. S. F. No. 17,254

WW  
 12/23/91