

STRATIGRAPHIC TRENCH 22 (ST-22)

Stratigraphic Trench 22 (ST-22) (440 x 100 x 120 cm) was located on a north/south axis (10°/190°). The surface of ST-22 contained sporadic sugar cane, along with scattered grass patches and previously disturbed top soil. ST-22 contained one stratigraphic layer (Figure 48 and Figure 49).

Layer I (0-120 cmbs) consisted of dark reddish brown (5YR 3/4) compacted and wet semi-plastic silty clay. No roots or stones were present throughout Layer I.

STRATIGRAPHIC TRENCH 23 (ST-23)

Stratigraphic Trench 23 (ST-23) (440 x 90 x 115 cm) was located on a north/south axis (20°/200°). The surface of ST-23 contained sporadic sugar cane, along with scattered grass patches and previously disturbed top soil. ST-23 contained one stratigraphic layer (Figure 50 and Figure 51).

Layer I (0-115 cmbs) consisted of dark reddish brown (2.5YR 3/4) compacted and wet semi-plastic silty clay. No roots or stones were present throughout Layer I.

STRATIGRAPHIC TRENCH 24 (ST-24)

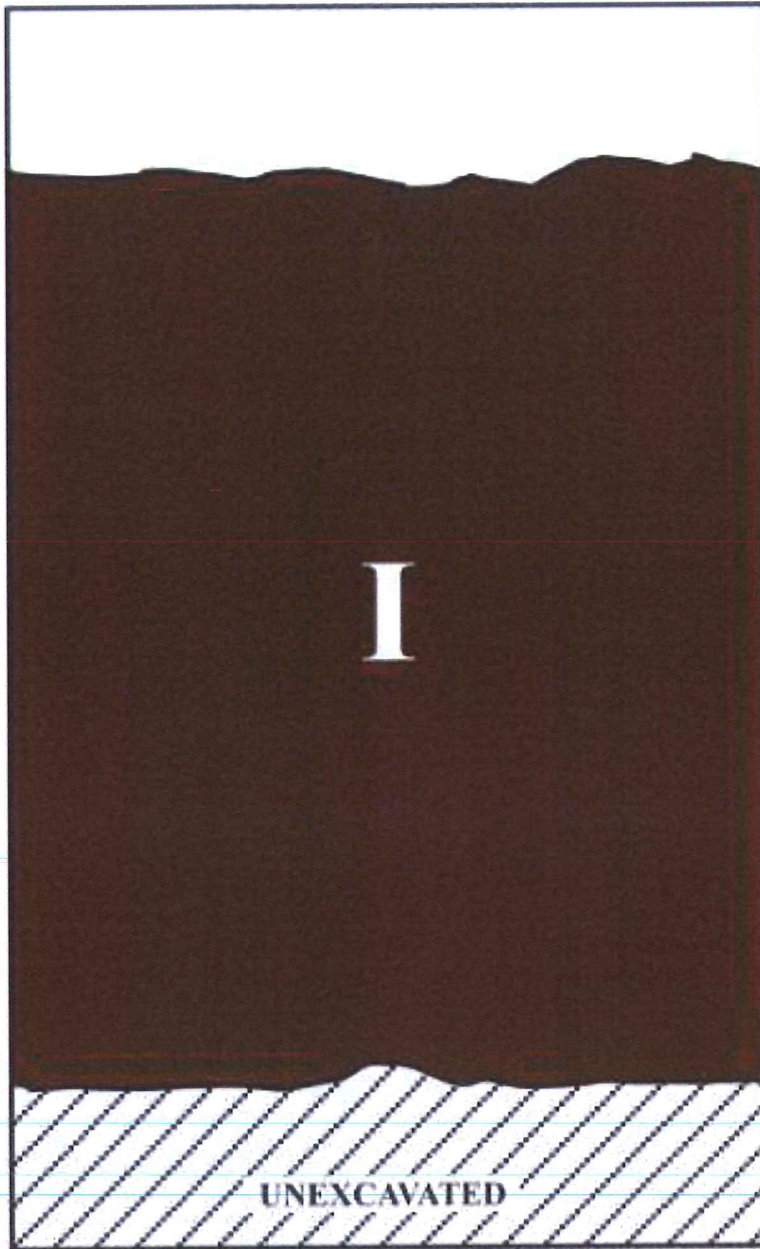
Stratigraphic Trench 24 (ST-24) (440 x 95 x 150 cm) was located on an east/west axis (80°/260°). The surface of ST-24 contained sporadic sugar cane, along with scattered grass patches and previously disturbed top soil. ST-24 contained one stratigraphic layer (Figure 52 and Figure 53).

Layer I (0-150 cmbs) consisted of dark reddish brown (2.5YR 3/4) compacted and wet semi-plastic silty clay. No roots or stones were present throughout Layer I.



Figure 48: Photographic View of Stratigraphic Trench 22 (ST-22). View to Northwest.

ST-22 PROFILE



METERS

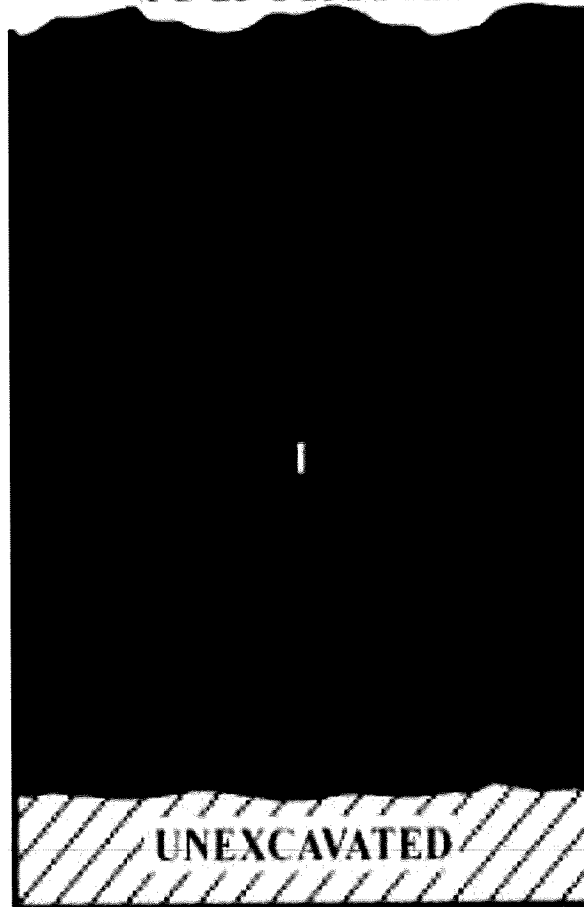
KEY	
I	LAYER I: DARK REDDISH BROWN (5 YR 3/4) CLAY

Figure 49: Stratigraphic Trench 22 (ST-22) Profile.



Figure 50: Photographic View of Stratigraphic Trench 23 (ST-23). View to Northwest.

ST-23 PROFILE



0 1 2 4 5 m



KEY	
1	- LAYER 1: DARK REDDISH BROWN (5YR 3/4) CLAY

Figure 51: Stratigraphic Trench 23 (ST-23) Profile.

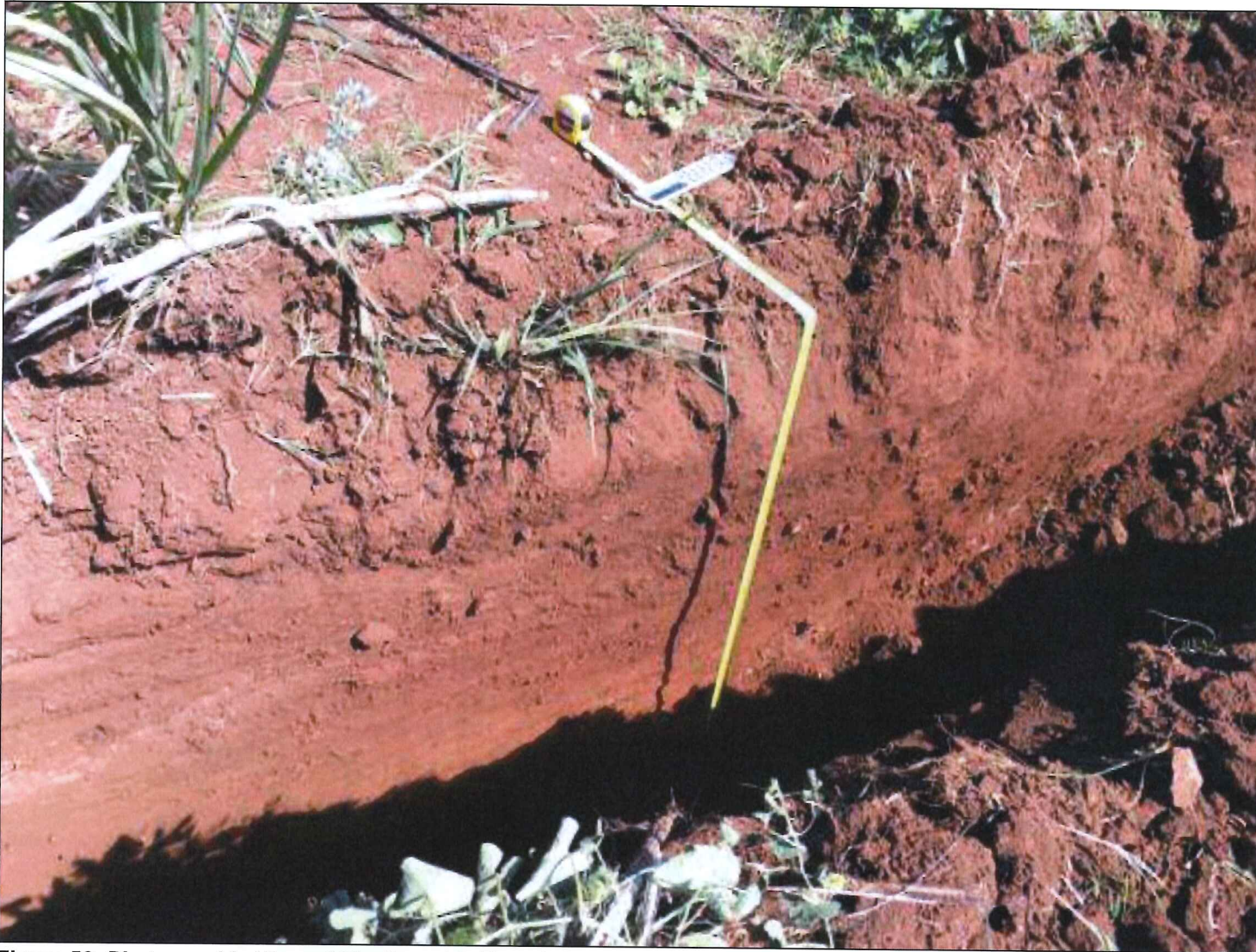
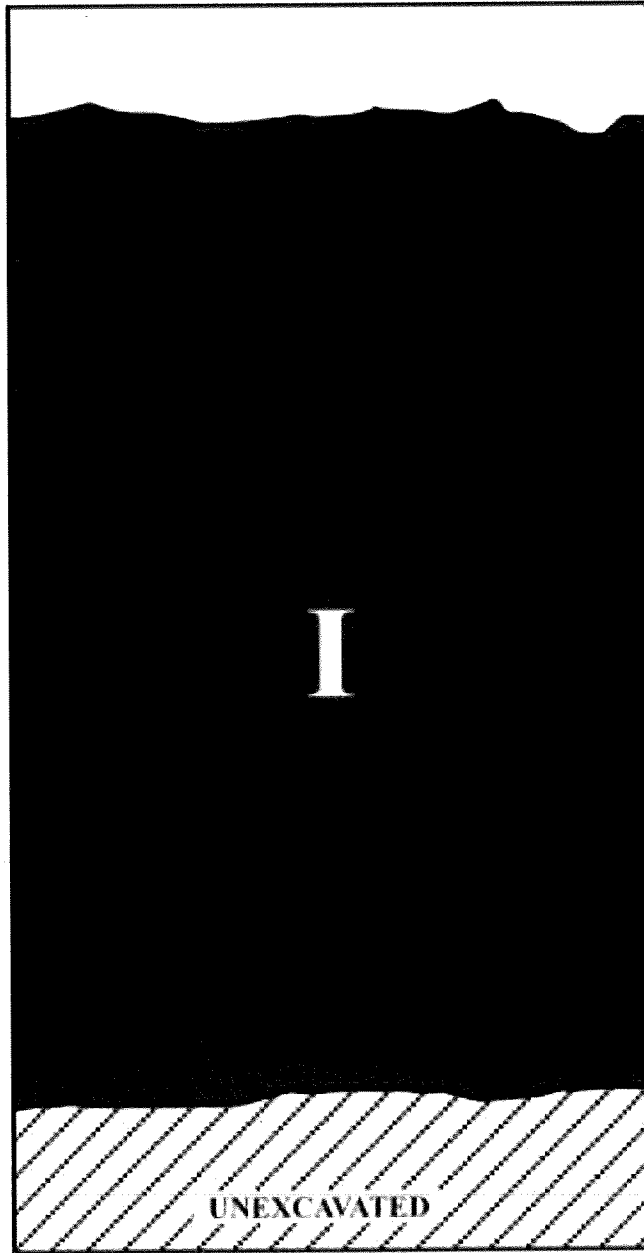


Figure 52: Photographic View of Stratigraphic Trench 24 (ST-24). View to Northwest.

ST-24 PROFILE



KEY	
I	- LAYER I: DARK REDDISH BROWN (2.5 YR 3/4) CLAY

Figure 53: Stratigraphic Trench 24 (ST-24) Profile.