

STRATIGRAPHIC TRENCH 13 (ST-13)

Stratigraphic Trench 13 (ST-13) (450 x 95 x 170 m) was located on a southeast/northwest axis (120°/300°). The surface of ST-13 contained sporadic sugar cane, along with scattered grass patches and previously disturbed top soil. ST-13 contained one stratigraphic layer (Figure 30 and Figure 31).

Layer I (0-170 cmbs) consisted of dark reddish brown (2.5YR 3/3) compacted and wet semi-plastic silty clay. No roots or stones were present throughout Layer I.

STRATIGRAPHIC TRENCH 14 (ST-14)

Stratigraphic Trench 14 (ST-14) (450 x 95 x 165 cm) was located on a northeast/southwest axis (50°/230°). The surface of ST-14 contained sporadic sugar cane, along with scattered grass patches and previously disturbed top soil. ST-14 contained one stratigraphic layer (Figure 32 and Figure 33).

Layer I (0-165 cmbs) consisted of dark reddish brown (2.5YR 3/3) compacted and wet semi-plastic silty clay. No roots or stones were present throughout Layer I.

STRATIGRAPHIC TRENCH 15 (ST-15)

Stratigraphic Trench 15 (ST-15) (450 x 100 x 150 cm) was located on a southeast/northwest axis (10°/190°). The surface of ST-15 contained sporadic sugar cane, along with scattered grass patches and previously disturbed top soil. ST-15 contained one stratigraphic layer (Figure 34 and Figure 35).

Layer I (0-150 cmbs) consisted of dark reddish brown (5YR 3/4) compacted and wet semi-plastic silty clay. No roots or stones were present throughout Layer I.



Figure 30: Photographic View of Stratigraphic Trench 13 (ST-13). View to Southeast.

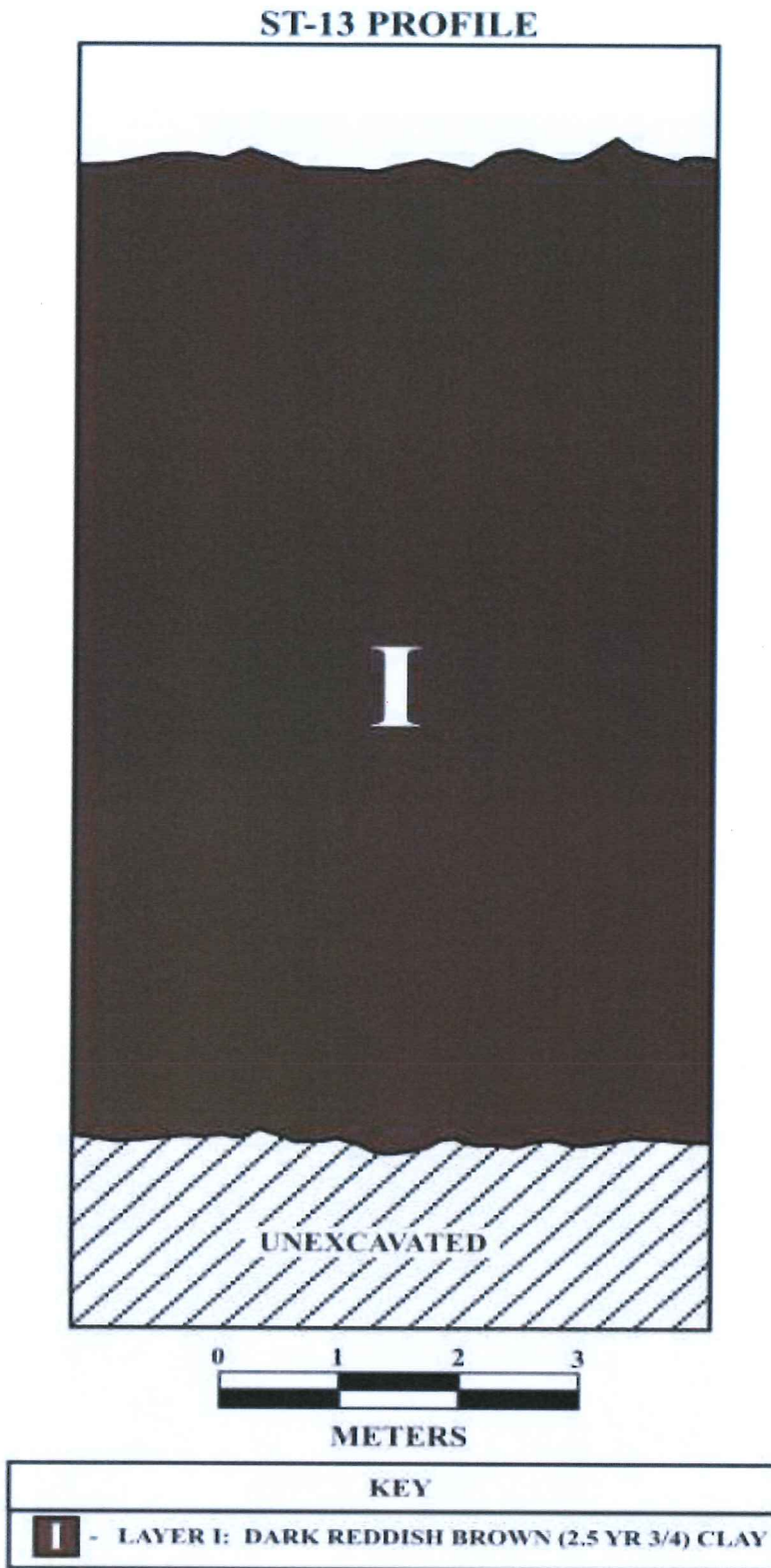


Figure 31: Stratigraphic Trench 13 (ST-13) Profile.

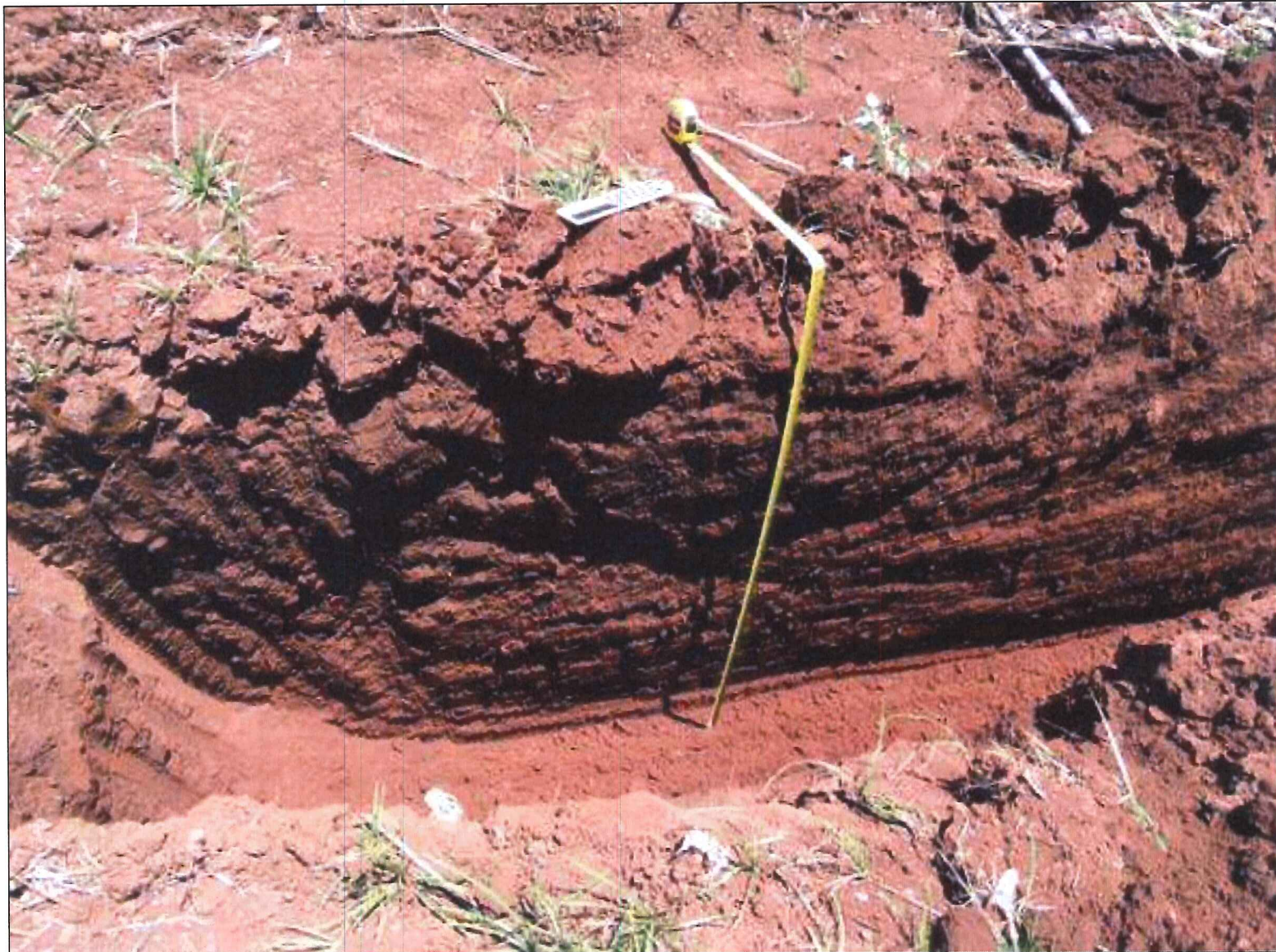
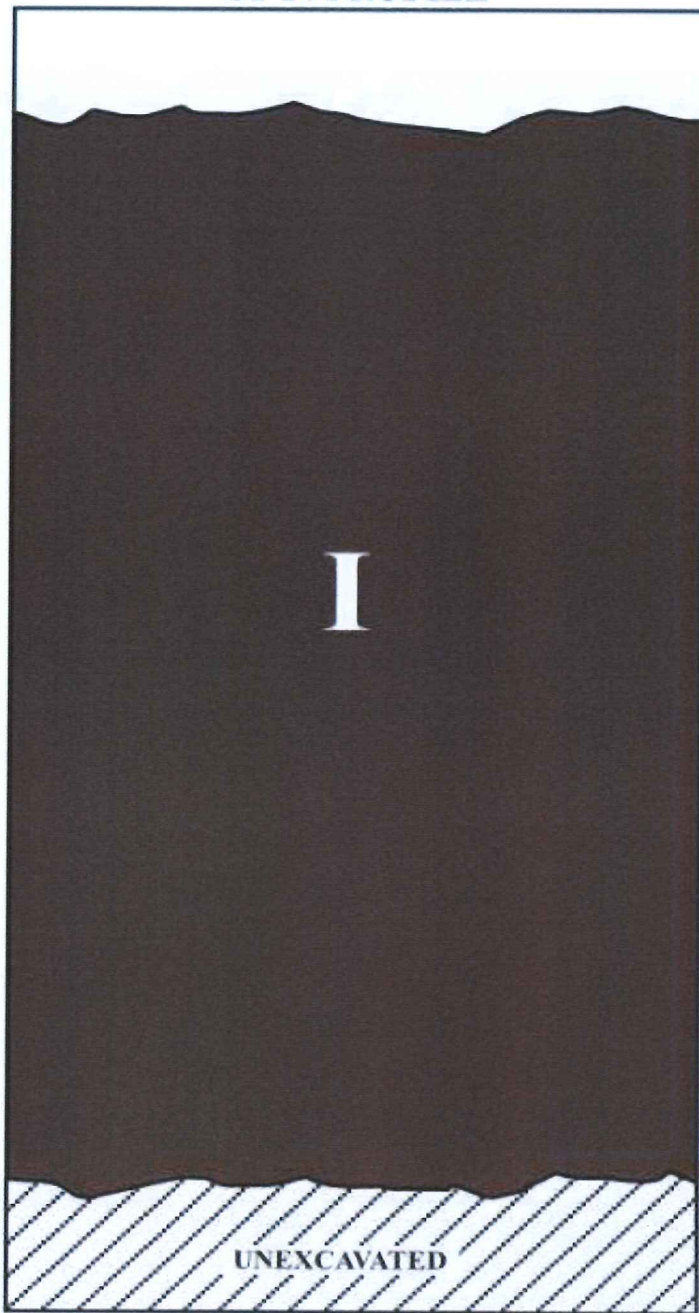


Figure 32: Photographic View of Stratigraphic Trench 14 (ST-14). View to Northwest.

ST-14 PROFILE



KEY	
I	LAYER I: DARK REDDISH BROWN (2.5 YR 3/3) CLAY

Figure 33: Stratigraphic Trench 14 (ST-14) Profile.



Figure 34: Photographic View of Stratigraphic Trench 15 (ST-15). View to Northwest.

ST-15 PROFILE

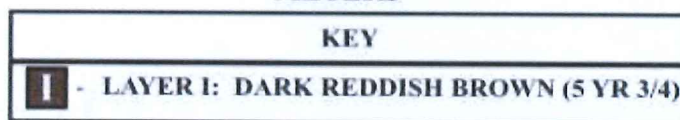
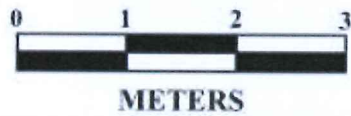
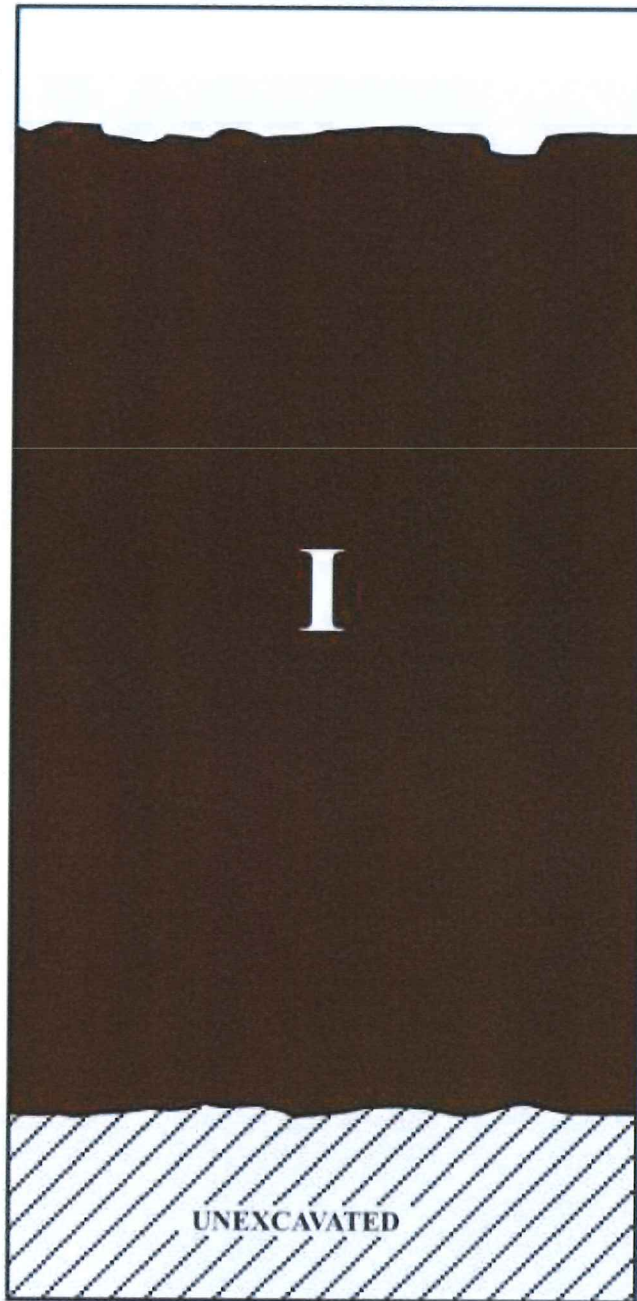


Figure 35: Stratigraphic Trench 15 (ST-15) Profile.