

State/County Special Use Permit Amendment Applications for

Proposed Central Maui Landfill (CML) Facilities Project

Maui Planning Commission Meeting

December 10, 2019



Project Team

- **Applicant:** County of Maui, Department of Environmental Management
- **Engineering:** A-MEHR
- **Surveyor:** R.T. Tanaka Engineers, Inc.
- **Traffic:** Fehr & Peers
- **Cultural:** Cultural Surveys Hawaii, Inc.
- **Planning Consultant:** Munekiyo Hiraga

Project Description

- 40-Acre Expansion of CML
- Adjacent to Existing CML
- Project will divert waste from CML
- Proposed Facilities and Uses:
 - Office (8,000 Sq. Ft.)
 - Abandoned Vehicles Area (2 acres)
 - Metals Processing Area (40,000 Sq. Ft.)
 - Open Construction and Demolition Material Recovery Area (40,000 Sq. Ft.)
 - Household Hazardous Waste and Electronic Waste Collection and Storage Area (20,000 Sq. Ft.)
 - Warehouse and Storage Area (20,000 Sq. Ft.)
 - Refuse Collection Office (12,000 Sq. Ft.), Truck Parking (2-Acres), and Maintenance Area
 - Two (2) Drainage Basins

Project Need

- CML is the main landfill on Maui
- CML Facilities Project will implement sustainability measures recommended in the County's Integrated Solid Waste Management Plan (ISWMP)
- Consolidate DEM's solid waste operations at the CML
- Project expected to extend capacity of CML to 2042 (from 2026)

CML Permitting History

State Land Use Commission Special Permits

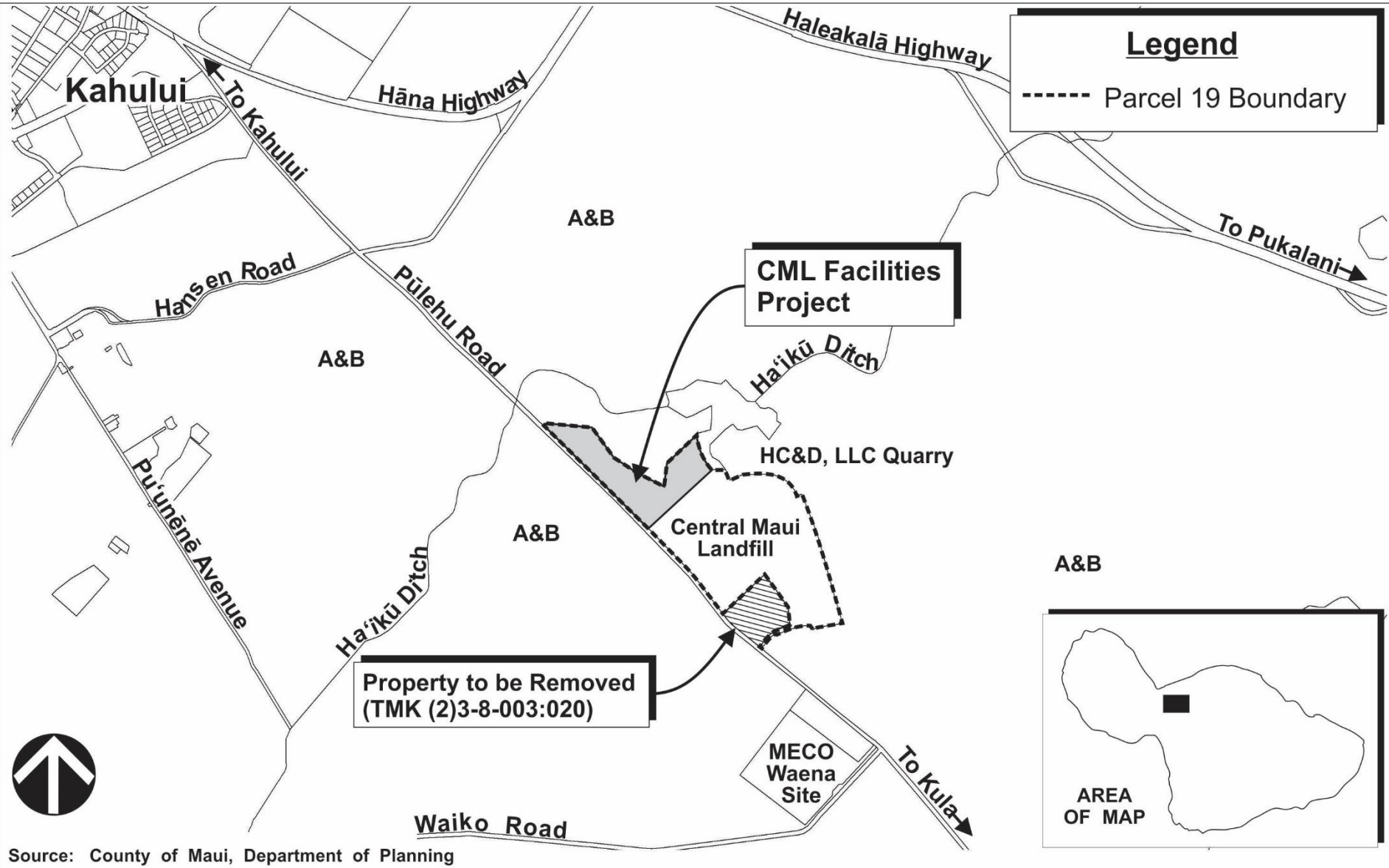
SP86-359	1987 – CML opened on 55 acres in accordance with State Special Permit No. SP86-359
	2006 – 1st Amendment to SP86-359 to Include Special Waste at Landfill (No Expansion)
SP97-390	1997 – State Special Permit No. SP97-390 Approved to Expand the Landfill on 29.340 Acres
	2002 – 1st Amendment to SP97-390 for New Entrance Facility (No Expansion)
	2004 – 2nd Amendment to SP97-390 for a 1.395-Acre Minor Expansion of Landfill for an Access Road and a Time Extension
	2009 – 3rd Amendment to SP97-390 for an Approximate 41-acre Expansion for a Total of 70.5 Acres. Transfer Permit From Dept. of Public Works to Dept. of Environmental Management and Time Extension to October 31, 2018

County Special Use Permit

- **2008** - County Special Use Permit No. CUP 2008/0003 Approved by the Maui Planning Commission

Request

- Amendments to State Special Permit No. SP97-390 and County Special Use Permit No. CUP 2008/0003 to include approximately 40 acres for development of the CML Facilities Project on TMK: (2)3-8-003:019 (por.)
- A Time Extension for State Special Permit No. SP97-390 to October 31, 2028
- Removal of TMK (2)3-8-003:020(por.) from State Special Permit No. SP97-390 and County Special Use Permit No. CUP 2008/0003



Source: County of Maui, Department of Planning

SP97-390 and CUP 2008/0003

Permit Area Summary

Existing Permit Area	72.927 Acres
Area to be Removed (Parcel 20 (por.))	16.841 Acres
CML Facilities Project Area	39.573 Acres
Total Permitted Area	95.659 Acres

Net Expansion of 22.732 Acres

CML Facilities Project -Background

Chapter 343, HRS, Environmental Assessment (EA)

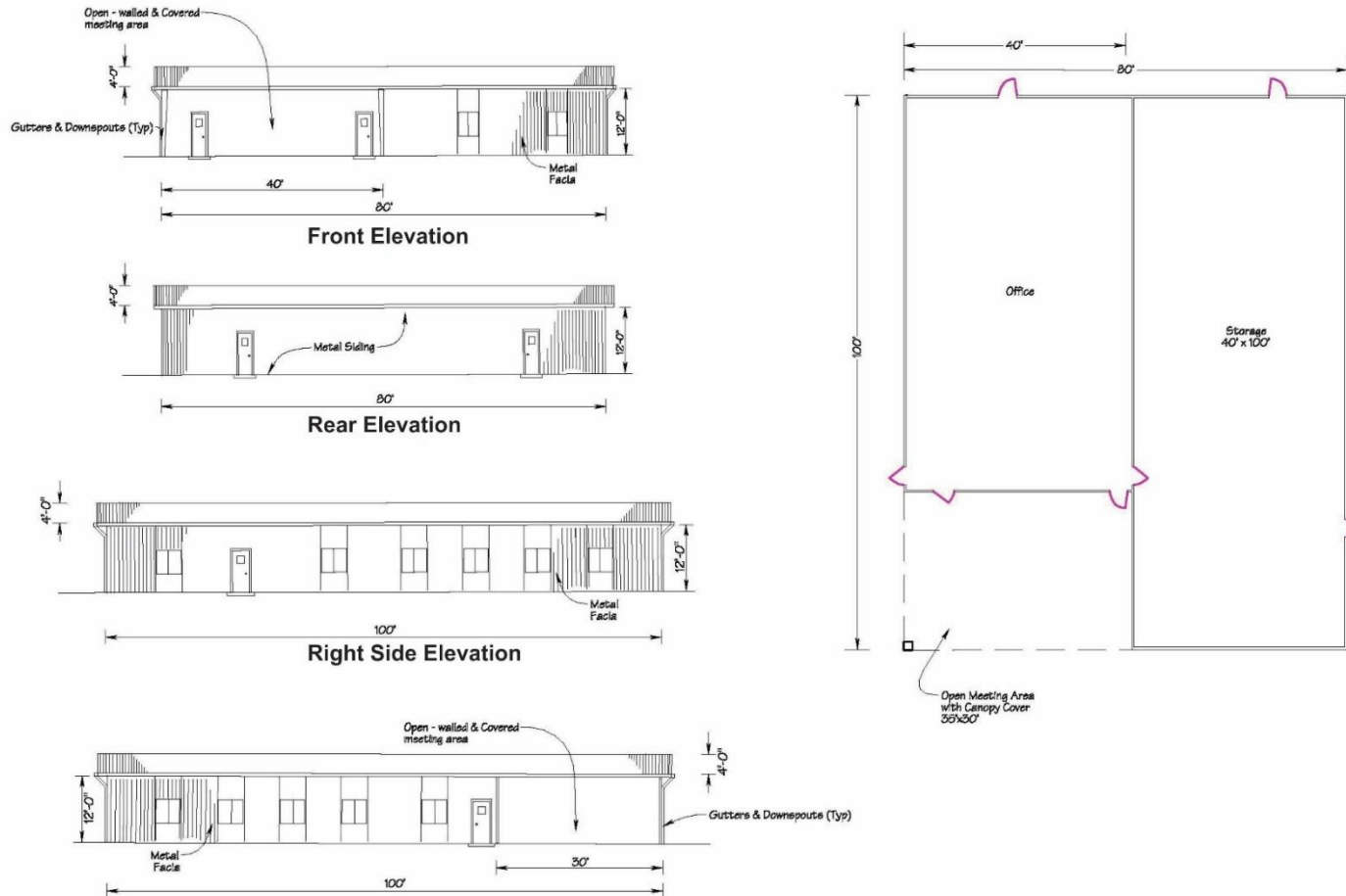
- July 19, 2019 - Finding of No Significant Impact (FONSI) Determination by Department of Environmental Management
- August 8, 2019 - Final EA/FONSI Published in OEQC's Environmental Notice
- No Legal Challenges Filed

KEY

- Parking and Landscaping
- Access Road
- Infiltration Basin
- Facilities
- ① Office (8,000 sq. ft.)
- ② Abandoned Vehicles Area (2 acres)
- ③ Metals Processing Area (40,000 sq. ft.)
- ④ Open Construction and Demolition Material Recovery Area (40,000 sq. ft.)
- ⑤ Household Hazardous Waste and Electronic Waste Collection and Storage Area (20,000 sq. ft.)
- ⑥ Warehouse and Storage Area (20,000 sq. ft.)
- ⑦ Refuse Collection Office (12,000 sq. ft.), Truck Parking (2 acres), and Maintenance Area
- ⑧ Drainage Basins

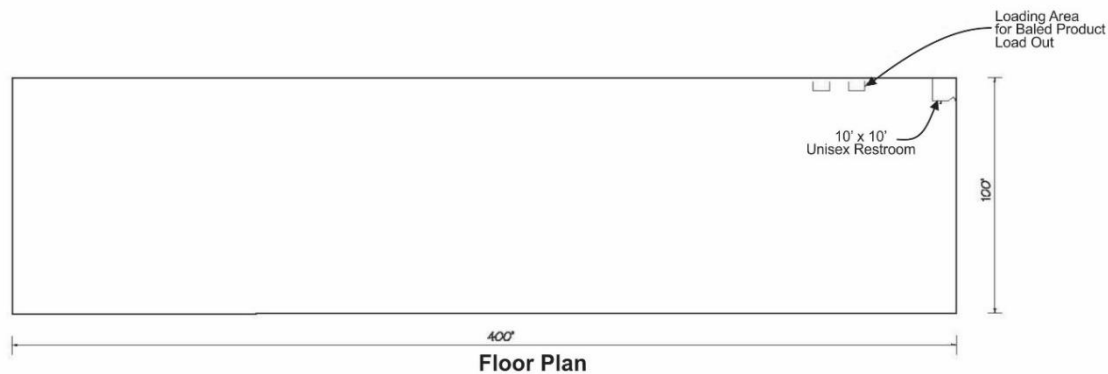
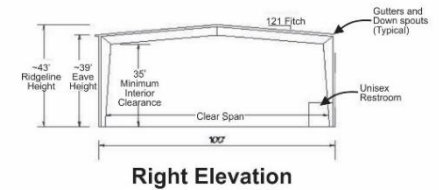
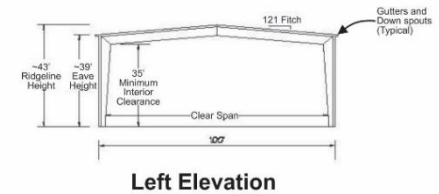
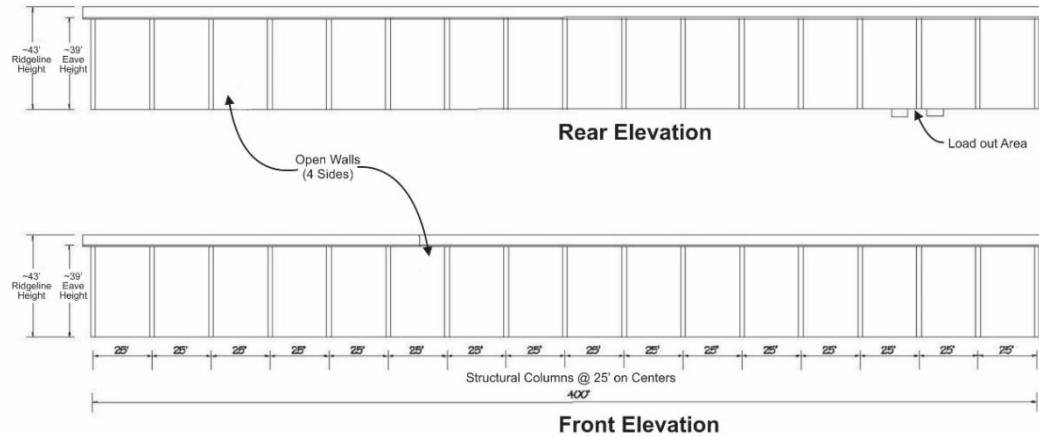
Source: A-MEHR, Inc.

Conceptual Office Building



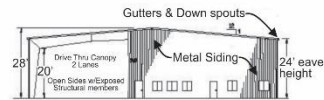
Source: A-MEHR, Inc.

Conceptual Metals Processing Building

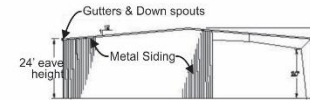


Source: A-MEHR, Inc.

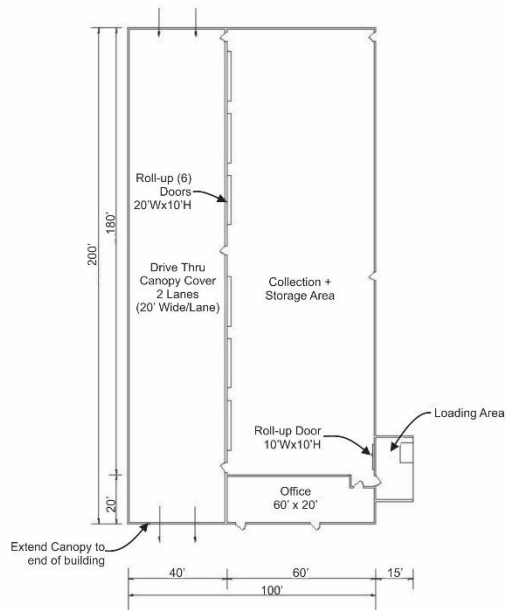
Conceptual Household Hazardous Waste and Electronic Waste Collection and Storage Area



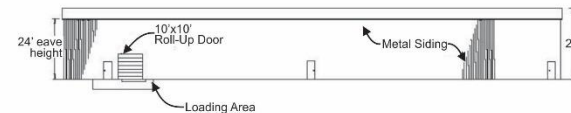
Front Elevation



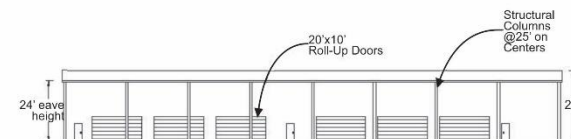
Rear Elevation



Floor Plan



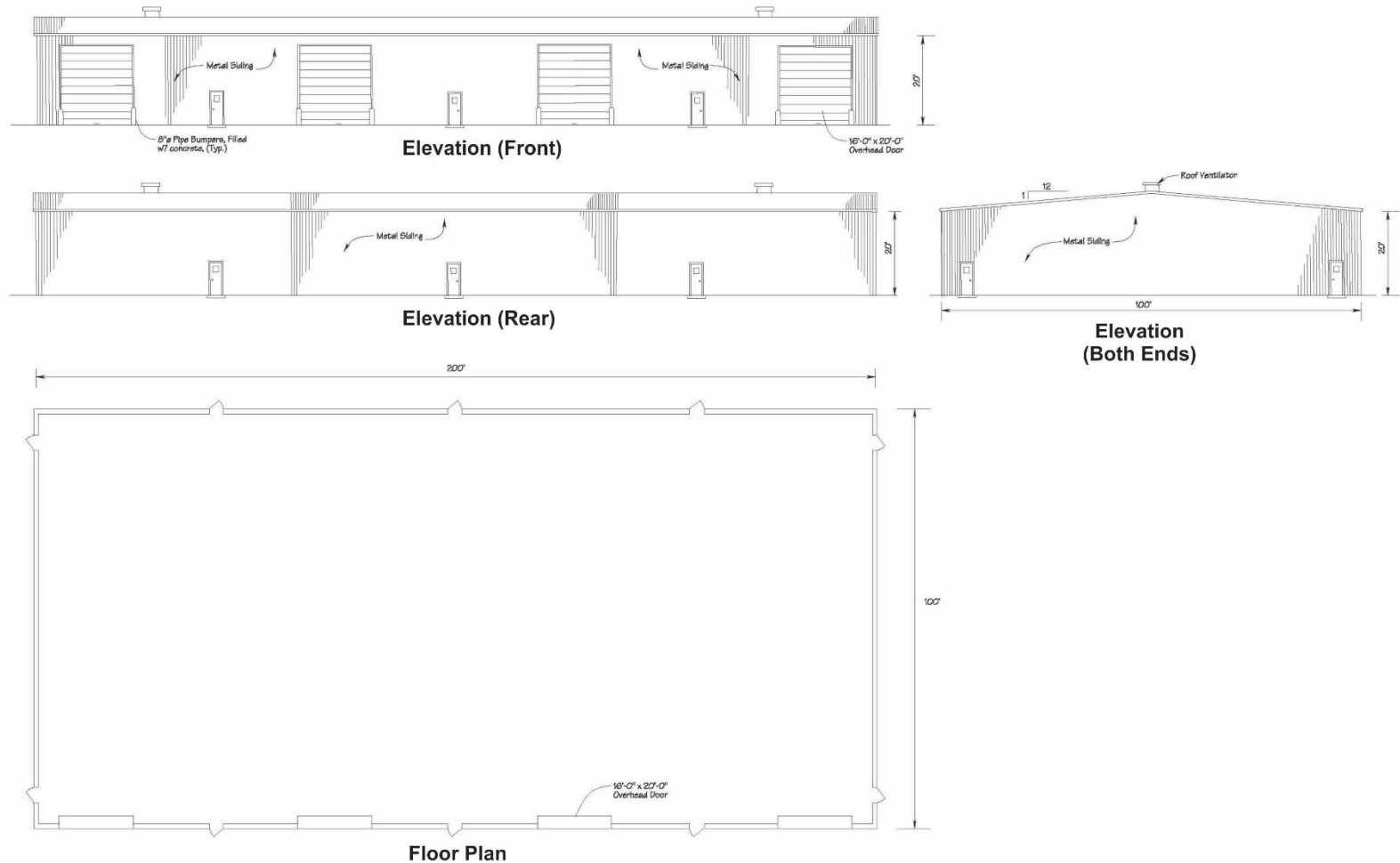
Right Elevation



Left Elevation

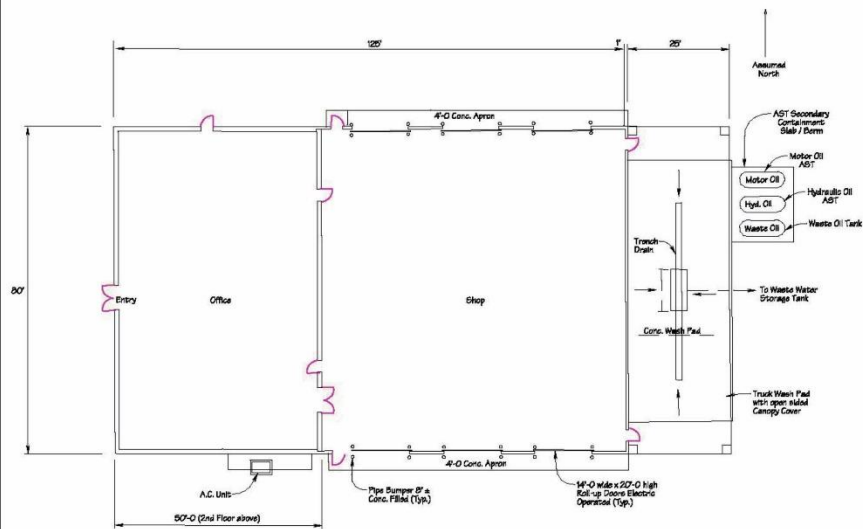
Source: A-MEHR, Inc.

Conceptual Warehouse Building

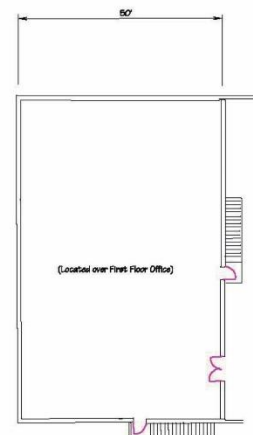


Source: A-MEHR, Inc.

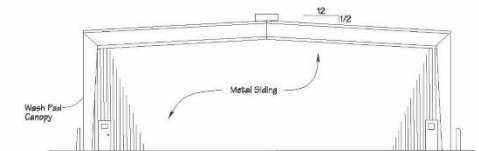
Conceptual Refuse Collection Office and Maintenance Area Building



1st Floor Plan



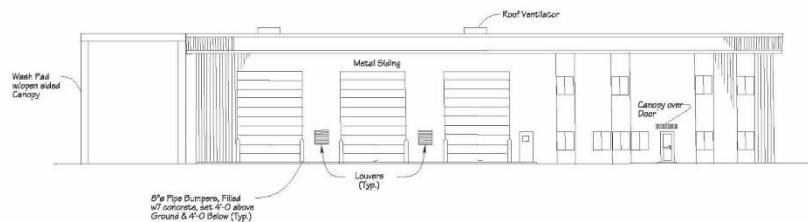
2nd Floor Plan



Elevation



Elevation



Elevation

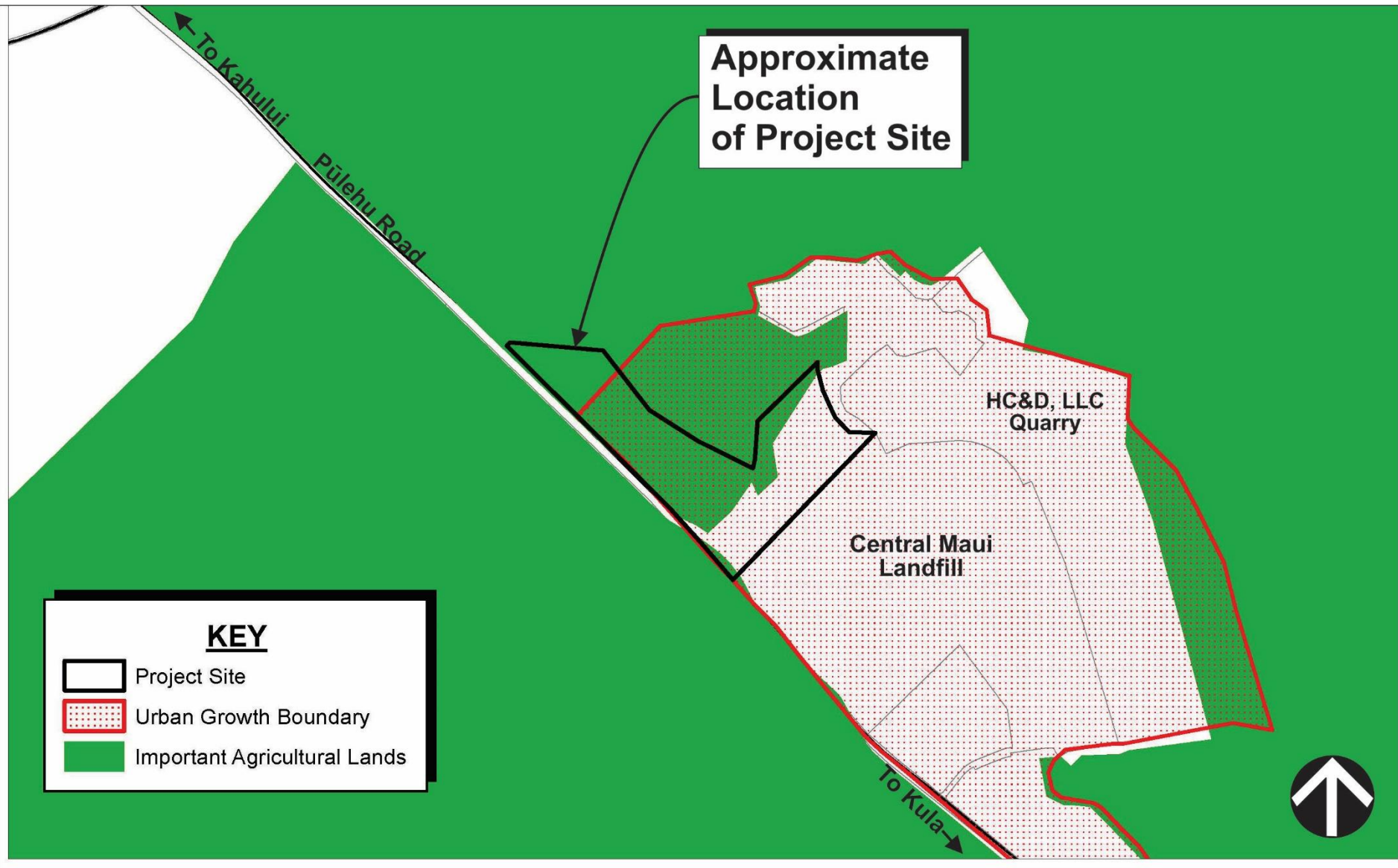


Elevation

Important Agricultural Lands (IAL)

- 22 acres of 40-acre project site identified as IAL
- State Department of Agriculture (DoA) and Office of Planning (OP) Notified of SP97-390 Application
- Comments from DoA and OP received and addressed in Final EA/FONSI
- Project site represents 0.08 percent of 27,102 acres of IAL on Maui

Important Agricultural Lands



Special Permit Criteria

- Complies with Chapters 205 and 205A, HRS

IAL Decision Making Criteria

1) §205-50(c)

2) §205-50(d)

- Complies with Section 15-15-95, SLUC Administrative Rules Relating to State Special Permits (including use of IAL)
- Complies with Title 19, Section 19.510.070(b), Maui County Code, Relating to County Special Use Permits

Summary of Request

- Amendments to State Special Permit No. SP97-390 and County Special Use Permit No. CUP 2008/0003 to include approximately 40 acres for development of the Central Maui Landfill Facilities Project on Tax Map Key: (2)3-8-003:019 (por.)
- A Time Extension for State Special Permit No. SP97-390 to October 31, 2028
- Removal of TMK (2)3-8-003:020(por.) from State Special Permit No. SP97-390 and County Special Use Permit No. CUP 2008/0003
- Total Permitted Area of 95.659 Acres

Next Step

- Action by Maui Planning Commission (MPC) on State Special Permit No. SP97-390 and County Special Use Permit No. CUP 2008/0003
- Transmittal of MPC recommendation for State Special Permit No. SP97-390 to State Land Use Commission (SLUC) for further action
- Action by SLUC on State Special Permit No. SP97-390

MAHALO