

## GEOCHECK® - PHYSICAL SETTING SOURCE SUMMARY

### DOMINANT SOIL COMPOSITION IN GENERAL AREA OF TARGET PROPERTY

The U.S. Department of Agriculture's (USDA) Soil Conservation Service (SCS) leads the National Cooperative Soil Survey (NCSS) and is responsible for collecting, storing, maintaining and distributing soil survey information for privately owned lands in the United States. A soil map in a soil survey is a representation of soil patterns in a landscape. The following information is based on Soil Conservation Service SSURGO data.

#### Soil Map ID: 1

Soil Component Name: Molokai  
 Soil Surface Texture: silty clay loam  
 Hydrologic Group: Class B - Moderate infiltration rates. Deep and moderately deep, moderately well and well drained soils with moderately coarse textures.  
 Soil Drainage Class: Well drained  
 Hydric Status: Unknown  
 Corrosion Potential - Uncoated Steel: Moderate  
 Depth to Bedrock Min: > 0 inches  
 Depth to Waterable Min: > 0 inches

Layer	Boundary		Classification		Saturated hydraulic conductivity micro m/sec	Soil Reaction (pH)
	Upper	Lower	AASHTO Group	Unified Soil		
1	0 inches	14 inches	Silt-Clay Materials (more than 35 pct. passing No. 200), Clayey Soils.	CL-K (proposed)	Max: 14 Min: 4.23	Max: 7.8 Min: 6.6
2	14 inches	72 inches	Silt-Clay Materials (more than 35 pct. passing No. 200), Clayey Soils.	CL-K (proposed)	Max: 14 Min: 4.23	Max: 7.8 Min: 6.6

#### Soil Map ID: 2

Soil Component Name: Molokai  
 Soil Surface Texture: silty clay loam  
 Hydrologic Group: Class B - Moderate infiltration rates. Deep and moderately deep, moderately well and well drained soils with moderately coarse textures.  
 Soil Drainage Class: Well drained

## GEOCHECK® - PHYSICAL SETTING SOURCE SUMMARY

Hydric Status: Unknown  
 Corrosion Potential - Uncoated Steel: Moderate  
 Depth to Bedrock Min: > 0 inches  
 Depth to Waterable Min: > 0 inches

Layer	Boundary		Classification		Saturated hydraulic conductivity micro m/sec	Soil Reaction (pH)
	Upper	Lower	AASHTO Group	Unified Soil		
1	0 inches	14 inches	Silt-Clay Materials (more than 35 pct. passing No. 200), Clayey Soils.	CL-K (proposed)	Max: 14 Min: 4.23	Max: 7.8 Min: 6.6
2	14 inches	72 inches	Silt-Clay Materials (more than 35 pct. passing No. 200), Clayey Soils.	CL-K (proposed)	Max: 14 Min: 4.23	Max: 7.8 Min: 6.6

#### Soil Map ID: 3

Soil Component Name: Uwala  
 Soil Surface Texture: silty clay loam  
 Hydrologic Group: Class B - Moderate infiltration rates. Deep and moderately deep, moderately well and well drained soils with moderately coarse textures.  
 Soil Drainage Class: Well drained  
 Hydric Status: Unknown  
 Corrosion Potential - Uncoated Steel: High  
 Depth to Bedrock Min: > 0 inches  
 Depth to Waterable Min: > 0 inches

**GEOCHECK® - PHYSICAL SETTING SOURCE SUMMARY**

Soil Layer Information							
Layer	Boundary		Soil Texture Class	Classification		Saturated hydraulic conductivity micro msec	
	Upper	Lower		AASHTO Group	Unified Soil		
1	0 inches	18 inches	silty clay loam	Silt-Clay Materials (more than 35 pct. passing No. 200), Clayey Soils.	CL-K (proposed)	Max: 14 Min: 4.23	Max: 5 Min: 4.5
2	18 inches	57 inches	silty clay loam	Silt-Clay Materials (more than 35 pct. passing No. 200), Clayey Soils.	CL-K (proposed)	Max: 14 Min: 4.23	Max: 6 Min: 5.1
3	57 inches	59 inches	silty clay loam	Silt-Clay Materials (more than 35 pct. passing No. 200), Clayey Soils.	CL-K (proposed)	Max: 14 Min: 4.23	Max: 6 Min: 5.1

Soil Map ID: 4

Soil Component Name: Waikapu

Soil Surface Texture: silty clay loam

Hydrologic Group: Class B - Moderate infiltration rates. Deep and moderately deep, moderately well and well drained soils with moderately coarse textures.

Soil Drainage Class: Well drained

Hydric Status: Unknown

Corrosion Potential - Uncoated Steel: Low

Depth to Bedrock Min: > 0 inches

Depth to Waterable Min: > 0 inches

**GEOCHECK® - PHYSICAL SETTING SOURCE SUMMARY**

Soil Layer Information							
Layer	Boundary		Soil Texture Class	Classification		Saturated hydraulic conductivity micro msec	
	Upper	Lower		AASHTO Group	Unified Soil		
1	0 inches	11 inches	silty clay loam	Silt-Clay Materials (more than 35 pct. passing No. 200), Silty Soils.	CL-K (proposed)	Max: 14 Min: 4.23	Max: 7.8 Min: 6.6
2	11 inches	59 inches	silty clay loam	Silt-Clay Materials (more than 35 pct. passing No. 200), Silty Soils.	CL-K (proposed)	Max: 14 Min: 4.23	Max: 7.8 Min: 6.6

Soil Map ID: 5

Soil Component Name: Uwala

Soil Surface Texture: silty clay loam

Hydrologic Group: Class B - Moderate infiltration rates. Deep and moderately deep, moderately well and well drained soils with moderately coarse textures.

Soil Drainage Class: Well drained

Hydric Status: Unknown

Corrosion Potential - Uncoated Steel: High

Depth to Bedrock Min: > 0 inches

Depth to Waterable Min: > 0 inches

**GEOCHECK® - PHYSICAL SETTING SOURCE SUMMARY**

Soil Layer Information						
Layer	Boundary		Soil Texture Class	Classification	Saturated hydraulic conductivity (micro m/sec)	Soil Reaction (pH)
	Upper	Lower				
2	18 inches	57 inches	silty clay loam	Silt-Clay Materials (more than 35 pct. passing No. 200). Clayey Soils.	CL-K (proposed)	Max: 14 Min: 4.23 5.1
3	57 inches	59 inches	silty clay loam	Silt-Clay Materials (more than 35 pct. passing No. 200). Clayey Soils.	CL-K (proposed)	Max: 14 Min: 4.23 5.1

**LOCAL / REGIONAL WATER AGENCY RECORDS**

EDR Local/Regional Water Agency records provide water well information to assist the environmental professional in assessing sources that may impact ground water flow direction, and in forming an opinion about the impact of contaminant migration on nearby drinking water wells.

**WELL SEARCH DISTANCE INFORMATION**

DATABASE SEARCH DISTANCE (miles)  
 Federal USGS 1,000  
 Federal FRDS PWS Nearest PWS within 1 mile  
 State Database 1,000

**FEDERAL USGS WELL INFORMATION**

MAP ID \_\_\_\_\_ WELL ID \_\_\_\_\_ LOCATION FROM TP \_\_\_\_\_  
 No Wells Found

**FEDERAL FRDS PUBLIC WATER SUPPLY SYSTEM INFORMATION**

MAP ID \_\_\_\_\_ WELL ID \_\_\_\_\_ LOCATION FROM TP \_\_\_\_\_  
 No PWS System Found

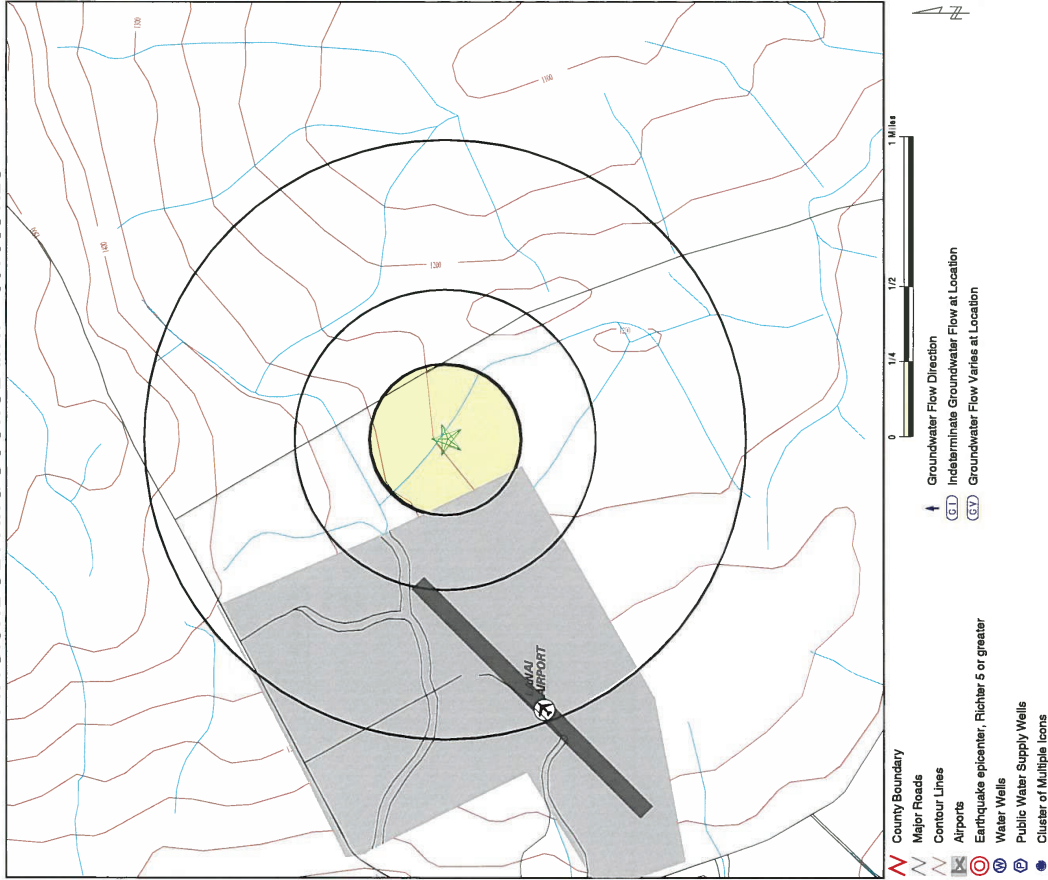
Note: PWS System location is not always the same as well location.

**GEOCHECK® - PHYSICAL SETTING SOURCE SUMMARY**

**STATE DATABASE WELL INFORMATION**

MAP ID \_\_\_\_\_ WELL ID \_\_\_\_\_ LOCATION FROM TP \_\_\_\_\_  
 No Wells Found

**PHYSICAL SETTING SOURCE\_MAP - 3875991.2s**



**GEOCHECK® - PHYSICAL SETTING SOURCE MAP FINDINGS  
RADON**

**AREA RADON INFORMATION**

Federal EPA Radon Zone for MAUI County: 3

- Note: Zone 1 indoor average level > 4 pCi/L.
- : Zone 2 indoor average level >= 2 pCi/L and <= 4 pCi/L.
- : Zone 3 indoor average level < 2 pCi/L.

Federal Area Radon Information for MAUI COUNTY, HI

Number of sites tested: 70

Area	Average Activity	% <= 4 pCi/L	% 4-20 pCi/L	% >20 pCi/L
Living Area - 1st Floor	0.057 pCi/L	100%	0%	0%
Living Area - 2nd Floor	0.000 pCi/L	100%	0%	0%
Basement	0.150 pCi/L	100%	0%	0%

**SITE NAME:** Milk Basin - 200 Acre Industrial Site  
**ADDRESS:** Milk Road & Kaunalaupau Highway  
 Lanai City HI 96763  
**LAT/LONG:** 20.7904 / 156.9375

**CLIENT:** TRC  
**CONTACT:** Ron Landolt  
**INQUIRY #:** 3875991.2s  
**DATE:** March 10, 2014 5:26 pm

Copyright © 2014 ES&S, Inc. © 2010 The Alaska Rel. 07/2008



## PHYSICAL SETTING SOURCE RECORDS SEARCHED

### TOPOGRAPHIC INFORMATION

#### USGS 7.5' Digital Elevation Model (DEM)

Source: United States Geological Survey  
EDR acquired the USGS 7.5' Digital Elevation Model in 2002 and updated it in 2006. The 7.5 minute DEM corresponds to the USGS 1:24,000- and 1:25,000-scale topographic quadrangle maps. The DEM provides elevation data with consistent elevation units and projection.

#### Scanned Digital USGS 7.5' Topographic Map (DRG)

Source: United States Geological Survey  
A digital raster graphic (DRG) is a scanned image of a U.S. Geological Survey topographic map. The map images are made by scanning published paper maps on high-resolution scanners. The raster image is georeferenced and fit to the Universal Transverse Mercator (UTM) projection.

### HYDROLOGIC INFORMATION

Flood Zone Data: This data, available in select counties across the country, was obtained by EDR in 2003 & 2011 from the Federal Emergency Management Agency (FEMA). Data depicts 100-year and 500-year flood zones as defined by FEMA.

NWI: National Wetlands Inventory. This data, available in select counties across the country, was obtained by EDR in 2002, 2005 and 2010 from the U.S. Fish and Wildlife Service.

### HYDROGEOLOGIC INFORMATION

#### AQUIFLOW<sup>®</sup> Information System

Source: EDR proprietary database of groundwater flow information  
EDR has developed the AQUIFLOW Information System (AIS) to provide data on the general direction of groundwater flow at specific points. EDR has reviewed reports submitted to regulatory authorities at select sites and has extracted the date of the report, hydrogeologically determined groundwater flow direction and depth to water table information.

### GEOLOGIC INFORMATION

#### Geologic Age and Rock Stratigraphic Unit

Source: P. G. Schruben, R.E. Arndt and W.J. Bawiec. Geology of the Conterminous U.S. at 1:2,500,000 Scale - A digital representation of the 1974 P.B. King and H.M. Bekman Map, USGS Digital Data Series DDS - 11 (1994).

#### STATSGO: State Soil Geographic Database

Source: Department of Agriculture, Natural Resources Conservation Service  
The U.S. Department of Agriculture's (USDA) Natural Resources Conservation Service (NRCS) leads the national Conservation Soil Survey (NCSS) and is responsible for collecting, storing, maintaining and distributing soil survey information for privately owned lands in the United States. A soil map in a soil survey is a representation of soil patterns in a landscape. Soil maps for STATSGO are compiled by generalizing more detailed (SSURGO) soil survey maps.

#### SSURGO: Soil Survey Geographic Database

Source: Department of Agriculture, Natural Resources Conservation Service (NRCS)  
Telephone: 800-672-5959  
SSURGO is the most detailed level of mapping done by the Natural Resources Conservation Service, mapping scales generally range from 1:12,000 to 1:63,360. Field mapping methods using national standards are used to construct the soil maps in the Soil Survey Geographic (SSURGO) database. SSURGO digitizing duplicates the original soil survey maps. This level of mapping is designed for use by landowners, townships and county natural resource planning and management.

## PHYSICAL SETTING SOURCE RECORDS SEARCHED

### LOCAL / REGIONAL WATER AGENCY RECORDS

#### FEDERAL WATER WELLS

#### PWS: Public Water Systems

Source: EPA/Office of Drinking Water  
Telephone: 202-564-3750  
Public Water System data from the Federal Reporting Data System. A PWS is any water system which provides water to at least 25 people for at least 60 days annually. PWSs provide water from wells, rivers and other sources.

#### PWS ENF: Public Water Systems Violation and Enforcement Data

Source: EPA/Office of Drinking Water  
Telephone: 202-564-3750  
Violation and Enforcement data for Public Water Systems from the Safe Drinking Water Information System (SDWIS) after August 1995. Prior to August 1995, the data came from the Federal Reporting Data System (FRDS).

#### USGS Water Wells: USGS National Water Inventory System (NWIS)

This database contains descriptive information on sites where the USGS collects or has collected data on surface water and/or groundwater. The groundwater data includes information on wells, springs, and other sources of groundwater.

### STATE RECORDS

#### Well Index Database

Source: Commission on Water Resource Management

Telephone: 808-587-0214

CWRM maintains a Well Index Database to track specific information pertaining to the construction and installation of production wells in Hawaii

### OTHER STATE DATABASE INFORMATION

#### RADON

#### Area Radon Information

Source: USGS

Telephone: 703-356-4020

The National Radon Database has been developed by the U.S. Environmental Protection Agency (USEPA) and is a compilation of the EPA/State Residential Radon Survey and the National Residential Radon Survey. The study covers the years 1986 - 1992. Where necessary data has been supplemented by information collected at private sources such as universities and research institutions.

#### EPA Radon Zones

Source: EPA

Telephone: 703-356-4020

Sections 307 & 309 of IRAA directed EPA to list and identify areas of U.S. with the potential for elevated indoor radon levels.

#### OTHER

#### Airport Landing Facilities:

Source: Federal Aviation Administration, 800-457-6656

#### Epilenses:

World earthquake epicenters, Richter 5 or greater

Source: Department of Commerce, National Oceanic and Atmospheric Administration

#### Earthquake Fault Lines:

The fault lines displayed on EDR's Topographic map are digitized quaternary faultlines, prepared in 1975 by the United States Geological Survey

**PHYSICAL SETTING SOURCE RECORDS SEARCHED**

**STREET AND ADDRESS INFORMATION**

© 2010 Tele Atlas North America, Inc. All rights reserved. This material is proprietary and the subject of copyright protection and other intellectual property rights owned by or licensed to Tele Atlas North America, Inc. The use of this material is subject to the terms of a license agreement. You will be held liable for any unauthorized copying or disclosure of this material.

**MIKI BASIN GENERATING STATION**  
1001 N MIKI RD  
LANAI CITY, HI 96763

Inquiry Number:  
March 31, 2014

**EDR Site Report™**

6 Armstrong Road, 4th floor  
Shelton, CT 06484  
Toll Free: 800.352.0050  
www.edrnet.com



**SECTION 1: FACILITY SUMMARY**

AREA	FACILITY	FACILITY 1 MIKI BASIN GENERATING STATION 1001 N MIKI RD MARIETTA, GA 30067 EDR ID #S10778803
<b>WASTE MANAGEMENT</b> Facility generates hazardous waste (RCRA)	Facility fronts, stores, or disposes of hazardous waste on-site (RCRA/TSDF)	NO
Facility has received Notices of Violations (RCRA/VOL)	Facility has been subject to RCRA administrative actions (RCRA/IS)	NO
Facility handles PCBs (PACB)	Facility uses radioactive materials (MLTS)	NO
Facility manages registered aboveground storage tanks (AST)	Facility manages registered underground storage tanks (UST)	NO
Facility has reported leaking underground storage tank incidents (LUST)	Facility has reported emergency releases to the soil (ERNS)	NO
Facility has reported emergency releases to the soil (ERNS)	Facility has reported hazardous material incidents to EPCRA (HMIRS)	NO
<b>WASTE DISPOSAL</b> Facility is a Superfund Site (NPL)	Facility has a known or suspect abandoned, inactive or uncontrolled hazardous waste site (CERCLIS)	NO
Facility has a reported Superfund Lien on it (LENS)	Facility is listed as a state hazardous waste site (SHWS)	NO
Facility has disposed of solid waste on-site (SW7/LF)	<b>MULTIMEDIA</b> Facility uses toxic chemicals and has notified EPA under SARA Title III, Section 313 (TRIS)	NO
Facility produces pesticides and has notified EPA under Section 7 of FIFRA (SS7S)	Facility manufactures or imports toxic chemicals on the TSCA list (TSCA)	NO
Facility has inspections under FIFRA, TSCA or EPCRA (FTTS)	Facility is listed in EPA's index system (FINDS)	NO
Facility is listed in other database records (OTHER)	<b>POTENTIAL SUPERFUND LIABILITY</b> Facility has a list of potentially responsible parties PRP	YES -14
<b>TOTAL (YES)</b>		1

**TABLE OF CONTENTS**

The EDR-Site Report™ is a comprehensive presentation of government filings on a facility identified in a search of federal, state and local environmental databases. The report is divided into three sections:

**Section 1: Facility Summary** ..... Page 3  
 Summary of facility filings including a review of the following areas: waste management, waste disposal, multi-media issues, and Superfund liability.

**Section 2: Facility Detail Reports** ..... Page 4  
 All available detailed information from databases where sites are identified.

**Section 3: Databases and Update Information** ..... Page 6  
 Name, source, update dates, contact phone number and description of each of the databases for this report.

*Thank you for your business.*  
 Please contact EDR at 1-800-352-0050  
 with any questions or comments.

**Disclaimer - Copyright and Trademark Notice**

This report contains information obtained from a variety of public and other sources reasonably available to Environmental Data Resources, Inc. It cannot be concluded from this Report that coverage information for the target and surrounding properties does not exist from other sources. NO WARRANTY EXPRESSED OR IMPLIED, IS MADE WHATSOEVER IN CONNECTION WITH THIS REPORT. ENVIRONMENTAL DATA RESOURCES, INC. SPECIFICALLY DISCLAIMS THE MAKING OF ANY SUCH WARRANTIES, INCLUDING WITHOUT LIMITATION, MERCHANTABILITY, FITNESS FOR A PARTICULAR USE OR PURPOSE, OR THE RISK IS ASSUMED BY THE USER. IN NO EVENT SHALL ENVIRONMENTAL DATA RESOURCES, INC. BE LIABLE FOR ANY DAMAGES, INCLUDING WITHOUT LIMITATION, SPECIAL, INCIDENTAL, CONSEQUENTIAL OR EXEMPLARY DAMAGES, FOR ANY LOSS OR DAMAGE, INCLUDING, WITHOUT LIMITATION, SPECIAL, INCIDENTAL, ACCIDENT OR ANY OTHER CAUSE, LIMITED TO THE AMOUNT PAID FOR THIS REPORT. PURCHASER ACCEPTS THIS REPORT "AS IS". ANY ANALYSES, ESTIMATES, RATINGS, LIMITED TO A REFUND OF THE AMOUNT PAID FOR THIS REPORT. PURCHASER ACCEPTS THIS REPORT "AS IS". ANY ANALYSES, ESTIMATES, RATINGS, OR OTHER INFORMATION PROVIDED IN THIS REPORT ARE INTENDED TO PROVIDE INFORMATION FOR YOUR USE ONLY. ONLY A PHASE I ENVIRONMENTAL SITE ASSESSMENT PERFORMED BY AN ENVIRONMENTAL PROFESSIONAL CAN PRODUCE INFORMATION REGARDING THE ENVIRONMENTAL RISK FOR ANY PROPERTY. ADDITIONALLY, THE INFORMATION PROVIDED IN THIS REPORT IS NOT TO BE CONSTRUED AS LEGAL ADVICE.

Copyright 2008 by Environmental Data Resources, Inc. All rights reserved. Reproduction in any media or format, in whole or in part, of any report or map of Environmental Data Resources, Inc., or its affiliates, is prohibited without prior written permission. EDR and its logos (including Sanborn and Sanborn Map) are trademarks of Environmental Data Resources, Inc. or its affiliates. All other trademarks used herein are the property of their respective owners.

SECTION 2: FACILITY DETAIL REPORTS

...Continued...

SECTION 2: FACILITY DETAIL REPORTS

MULTIMEDIA

Facility is listed in other database records

DATABASE: Other Database Records (OTHER)

MIKI BASIN GENERATING STATION  
1001 N MIKI RD  
LANAI CITY, HI 96763  
EDR ID #S107769303

HI SPILLS:

Supplemental Loc. Text:  
Case Number: 20100524-0912  
HID Number: Not reported  
Facility Registry Id: Not reported  
Lead and Program: HEER EP&R  
ER: None  
Units: Diesel Generator "EMD 3"  
Substances: Lube Oil  
Less Or Greater Than: Not reported  
Numerical Quantity:  
Units: Gallons  
Activity Type: Response  
Activity Lead: Curtis Martin  
Assignment End Date: 2007-09-14 00:00:00  
Result: SOSC NFA  
File Under: MECO-Lanai City Generating Station

Island: Lanai  
Supplemental Loc. Text: Not reported  
Case Number: 20070916-1030  
HID Number: Not reported  
Facility Registry Id: Not reported  
Lead and Program: HEER EP&R  
Units: Diesel Generating Unit 4  
Substances: Engine Oil 40SAE  
Less Or Greater Than: Not reported  
Numerical Quantity:  
Units: Gallons  
Activity Type: Response  
Activity Lead: Paul Chong  
Assignment End Date: 2007-09-14 00:00:00  
Result: SOSC NFA  
File Under: MECO-Lanai City Generating Station

Island: Lanai  
Supplemental Loc. Text: Not reported  
Case Number: 071026-1901  
HID Number: Not reported  
Facility Registry Id: Not reported  
Lead and Program: HEER EP&R  
ER: None  
Units: Lube Oil  
Substances: Lube Oil  
Less Or Greater Than: >  
Numerical Quantity:  
Units: Gallons  
Activity Type: Response  
Activity Lead: Curtis Martin  
Assignment End Date: Not reported  
Result: Not reported  
File Under: Not reported

AIR:

Facility ID: 0030-06-C  
Island: Lanai  
Mailing Address: P.O. Box 398  
Local: Not reported  
City: Lanai, HI 96732  
State: HI  
Contact Name: Michael Ribao  
Contact Title: Manager, Power Supply Department  
Description: Eight (8) Diesel Engine Generators This permit encompasses the EMD diesel engine generators (DEGs) (model nos. 51-H-164, 54-C-141, 56-F-135, 56-G-13, 56-H-59, and 62-J-72, respectively), fired on fuel oil no. 2

and spec used oil Attachment (IB) Unit Nos. Description 7 82.2 MW  
Caterpillar diesel engine generators (DEGs) (model no. 3608, serial nos. 6MCO0475 and 6MCO0476 respectively), fired on fuel oil no. 2 and spec used oil

### SECTION 3: DATABASES AND UPDATE DATES

To maintain currency of the following federal, state and local databases, EDR contacts the appropriate government agency on a monthly or quarterly basis as required.

**Elapsed ASTM days:** Provides confirmation that this report meets or exceeds the 90-day updating requirement of the ASTM standard.

#### DATABASES FOUND IN THIS REPORT

**HI SPILLS: Release Notifications Source:** Department of Health  
Telephone: 808-586-4249  
Releases of hazardous substances to the environment reported to the Office of Hazard Evaluation and Emergency Response since 1988.

Date of Government Version: 01/04/2014  
Database Release Frequency: Varies

Date of Last EDR Contact: 02/26/2014  
Date of Next Scheduled Update: 06/09/2014

**HI AIRS: List of Permitted Facilities Source:** Department of Health  
Telephone: 808-586-4200  
A listing of permitted facilities in the state.

Date of Government Version: 01/01/2014  
Database Release Frequency: Varies

Date of Last EDR Contact: 01/03/2014  
Date of Next Scheduled Update: 04/21/2014

**MAUI ELECTRIC CO LTD MIKI BASIN**  
1001 N MIKI RD  
LANAI CITY, HI 96763

**Inquiry Number:**  
March 31, 2014

**SECTION 1: FACILITY SUMMARY**

AREA	FACILITY	FACILITY 1 MAUI ELECTRIC CO LTD MIKI BASIN POWER PL 1001 N MIKI RD KAHALA CITY, HI 96733 EDR ID #S11318468
<b>WASTE MANAGEMENT</b> Facility generates hazardous waste (RCRA) on-site (RCRA/TSDF)	Facility has received Notices of Violations (RCRA/VIOL) actions (RAA1S)	NO
Facility handles, stores, or disposes of hazardous waste	Facility has been subject to RCRA administrative actions (CORRACTS)	NO
Facility has received Notices of Violations (RCRA/VIOL) actions (RAA1S)	Facility handles PCBs (PADS)	NO
Facility uses radioactive materials (MLTS)	Facility manages registered aboveground storage tanks (AST)	NO
Facility manages registered underground storage tanks (UST)	Facility has reported leaking underground storage tank incidents (LUST)	NO
Facility has reported emergency releases to the soil (ERNS)	Facility has reported emergency releases to the soil (ERNS) to DDT (PHIRS)	NO
Facility has reported hazardous material incidents	<b>WASTE DISPOSAL</b> Facility is a Superfund Site (NFL)	NO
Facility has a known or suspect abandoned, inactive or uncontrolled hazardous waste site (CERCLIS)	Facility has a known or suspect abandoned, inactive or uncontrolled hazardous waste site (CERCLIS)	NO
Facility has a reported Superfund Lien on it (LENS)	Facility is listed as a state hazardous waste site (SHWS)	NO
Facility has disposed of solid waste on-site (SWFLF)	Facility has disposed of solid waste on-site (SWFLF)	NO
<b>MULTIMEDIA</b> Facility uses toxic chemicals and has notified EPA under SARA Title III, Section 313 (TRIS)	Facility produces pesticides and has notified EPA under Section 7 of FIFRA (SSTS)	NO
Facility manufactures or imports toxic chemicals on the TSCA list (TSCA)	Facility has inspections under FIFRA, TSCA or EPCRA (FTTS)	NO
Facility is listed in EPA's index system (FINDS)	Facility is listed in other database records (OTHER)	YES -p4
<b>POTENTIAL SUPERFUND LIABILITY</b> Facility has a list of potentially responsible parties PRP	<b>TOTAL (YES)</b>	NO
		1

**TABLE OF CONTENTS**

The EDR-Site Report<sup>TM</sup> is a comprehensive presentation of government filings on a facility identified in a search of federal, state and local environmental databases. The report is divided into three sections:

**Section 1: Facility Summary** ..... Page 3  
 Summary of facility filings including a review of the following areas: waste management, waste disposal, multi-media issues, and Superfund liability.

**Section 2: Facility Detail Reports** ..... Page 4  
 All available detailed information from databases where sites are identified.

**Section 3: Databases and Update Information** ..... Page 6  
 Name, source, update dates, contact phone number and description of each of the databases for this report.

*Thank you for your business.*  
 Please contact EDR at 1-800-352-0050  
 with any questions or comments.

**Disclaimer - Copyright and Trademark Notice**

This report contains information obtained from a variety of public and other sources reasonably available to Environmental Data Resources, Inc. It cannot be concluded from this Report that coverage information for the target and surrounding properties does not exist from other sources. NO WARRANTY EXPRESSED OR IMPLIED, IS MADE WHATSOEVER IN CONNECTION WITH THIS REPORT. ENVIRONMENTAL DATA RESOURCES, INC. SPECIFICALLY DISCLAIMS THE MAKING OF ANY SUCH WARRANTIES, INCLUDING WITHOUT LIMITATION, WARRANTIES OF MERCHANTABILITY, FITNESS FOR A PARTICULAR PURPOSE, OR NON-INFRINGEMENT. IN NO EVENT SHALL ENVIRONMENTAL DATA RESOURCES, INC. BE LIABLE FOR ANY DAMAGES, INCLUDING CONSEQUENTIAL, INCIDENTAL, SPECIAL, INCIDENTAL, ACCIDENT OR ANY OTHER CAUSE, FOR ANY LOSS OR DAMAGE, INCLUDING WITHOUT LIMITATION, SPECIAL, INCIDENTAL, CONSEQUENTIAL, OR EXEMPLARY DAMAGES. ANY LIABILITY ON THE PART OF ENVIRONMENTAL DATA RESOURCES, INC. IS STRICTLY LIMITED TO A REFUND OF THE AMOUNT PAID FOR THIS REPORT. Purchaser accepts this report "AS IS". Any analyses, estimates, ratings, or other information provided in this report are provided for informational purposes only and are not intended to provide for any Phase I Environmental Site Assessment performed by an environmental professional can produce information regarding the environmental risk for any property. Additionally, the information provided in this Report is not to be construed as legal advice.

Copyright 2008 by Environmental Data Resources, Inc. All rights reserved. Reproduction in any media or format, in whole or in part, of any report or map of Environmental Data Resources, Inc., or its affiliates, is prohibited without prior written permission. EDR and its logos (including Sanborn and Sanborn Map) are trademarks of Environmental Data Resources, Inc. or its affiliates. All other trademarks used herein are the property of their respective owners.

SECTION 2: FACILITY DETAIL REPORTS

MULTIMEDIA

Facility is listed in other database records

DATABASE: Other Database Records (OTHER)

MAUI ELECTRIC CO LTD MIKI BASIN POWER PL  
 1001 N MIKI RD  
 LANAI CITY, HI 96763  
 EDR ID #5113183480

HAZNET: 2003  
 Genpalid: HIR000000141  
 Contact: ED OYAMA  
 Telephone: 8085656453  
 Mailing Name: Not reported  
 Mailing City,St,Zip: LANAI CITY, HI 96763  
 Gen County: Not reported  
 TSD EPA ID: CAT000646117  
 Waste Category: Polychlorinated biphenyls and material containing PCBs  
 Disposal Method: Transfer Station  
 Tons: 0.35  
 Facility County: 99

2003  
 Genpalid: HIR000000141  
 Contact: ED OYAMA  
 Telephone: 8085656453  
 Mailing Name: Not reported  
 Mailing City,St,Zip: LANAI CITY, HI 96763  
 Gen County: Not reported  
 TSD EPA ID: CAT000646117  
 Waste Category: Polychlorinated biphenyls and material containing PCBs  
 Disposal Method: Transfer Station  
 Tons: 0.25  
 Facility County: 99

2003  
 Genpalid: HIR000000141  
 Contact: ED OYAMA  
 Telephone: 8085656453  
 Mailing Name: Not reported  
 Mailing City,St,Zip: LANAI CITY, HI 96763  
 Gen County: Not reported  
 TSD EPA ID: CAT000646117  
 Waste Category: Polychlorinated biphenyls and material containing PCBs  
 Disposal Method: Transfer Station  
 Tons: 0.14  
 Facility County: 99

2002  
 Genpalid: HIR000000141  
 Contact: ED OYAMA  
 Telephone: 8085656453  
 Mailing Name: Not reported  
 Mailing City,St,Zip: LANAI CITY, HI 96763  
 Gen County: Not reported  
 TSD EPA ID: CAT000646117  
 Waste Category: Polychlorinated biphenyls and material containing PCBs  
 Disposal Method: Transfer Station  
 Tons: 2.45  
 Facility County: 99

2002  
 Genpalid: HIR000000141  
 Contact: ED OYAMA  
 Telephone: 8085656453  
 Mailing Name: Not reported  
 Mailing City,St,Zip: LANAI CITY, HI 96763  
 Gen County: Not reported  
 TSD EPA ID: CAT000646117

SECTION 2: FACILITY DETAIL REPORTS

...Continued...

TSD County: Not reported  
 Waste Category: Polychlorinated biphenyls and material containing PCBs  
 Disposal Method: Transfer Station  
 Tons: 0.11  
 Facility County: 99

2001  
 Genpalid: HIR000000141  
 Contact: ED OYAMA  
 Telephone: 8085656453  
 Mailing Name: Not reported  
 Mailing City,St,Zip: LANAI CITY, HI 96763  
 Gen County: Not reported  
 TSD EPA ID: CAT000646117  
 Waste Category: Polychlorinated biphenyls and material containing PCBs  
 Disposal Method: Transfer Station  
 Tons: 0.15  
 Facility County: 99

2001  
 Genpalid: HIR000000141  
 Contact: ED OYAMA  
 Telephone: 8085656453  
 Mailing Name: Not reported  
 Mailing City,St,Zip: LANAI CITY, HI 96763  
 Gen County: Not reported  
 TSD EPA ID: CAT000646117  
 Waste Category: Polychlorinated biphenyls and material containing PCBs  
 Disposal Method: Transfer Station  
 Tons: 0.07  
 Facility County: 99

2000  
 Genpalid: HIR000000141  
 Contact: ED OYAMA  
 Telephone: 8085656453  
 Mailing Name: Not reported  
 Mailing City,St,Zip: LANAI CITY, HI 96763  
 Gen County: Not reported  
 TSD EPA ID: CAT000646117  
 Waste Category: Polychlorinated biphenyls and material containing PCBs  
 Disposal Method: Transfer Station  
 Tons: 0.77  
 Facility County: 99

2000  
 Genpalid: HIR000000141  
 Contact: ED OYAMA  
 Telephone: 8085656453  
 Mailing Name: Not reported  
 Mailing City,St,Zip: LANAI CITY, HI 96763  
 Gen County: Not reported  
 TSD EPA ID: CAT000646117  
 Waste Category: Polychlorinated biphenyls and material containing PCBs  
 Disposal Method: Transfer Station  
 Tons: 0.15  
 Facility County: 99



### SECTION 3: DATABASES AND UPDATE DATES

To maintain currency of the following federal, state and local databases, EDR contacts the appropriate government agency on a monthly or quarterly basis as required.

**Elapsed ASTM days:** Provides confirmation that this report meets or exceeds the 90-day updating requirement of the ASTM standard.

#### DATABASES FOUND IN THIS REPORT

**CA - HAZNET: Facility and Manifest Data**  
Source: California Environmental Protection Agency  
Telephone: 916/225-1136  
Facility and Manifest Data. The data is extracted from the copies of hazardous waste manifests received each year by the DTSC. The annual volume of manifests is typically 700,000 - 1,000,000 annually, representing approximately 350,000 - 500,000 shipments. Data are from the manifests themselves, and therefore many contain many of the same characteristics values for data elements such as generator ID, USD ID, waste category, and disposal method.

Date of Government Version: 12/31/2012  
Database Release Frequency: Annually  
Date of Last EDR Contact: 01/17/2014  
Date of Next Scheduled Update: 04/28/2014

**MIKI BASIN GENERATING STATION**  
1001 NORTH MIKI RD.  
LANAI CITY, HI 96763

**Inquiry Number:**  
March 31, 2014

## TABLE OF CONTENTS

The EDR-Site Report™ is a comprehensive presentation of government filings on a facility identified in a search of federal, state and local environmental databases. The report is divided into three sections:

**Section 1: Facility Summary** ..... Page 3  
 Summary of facility filings including a review of the following areas: waste management, waste disposal, multi-media issues, and Superfund liability.

**Section 2: Facility Detail Reports** ..... Page 4  
 All available detailed information from databases where sites are identified.

**Section 3: Databases and Update Information** ..... Page 7  
 Name, source, update dates, contact phone number and description of each of the databases for this report.

*Thank you for your business.*  
 Please contact EDR at 1-800-352-0050  
 with any questions or comments.

### Disclaimer - Copyright and Trademark Notice

This report contains information obtained from a variety of public and other sources, as applicable to Environmental Data Resources, Inc. It cannot be concluded from this Report that coverage information for the listed and surrounding properties does not exist from other sources. NO WARRANTY EXPRESSED OR IMPLIED, IS MADE WHATSOEVER IN CONNECTION WITH THIS REPORT. ENVIRONMENTAL DATA RESOURCES, INC. SPECIFICALLY DISCLAIMS THE MAKING OF ANY SUCH WARRANTIES, INCLUDING WITHOUT LIMITATION, MERCHANTABILITY OR FITNESS FOR A PARTICULAR USE OR PURPOSE. ALL RISK IS ASSUMED BY THE USER. IN NO EVENT SHALL ENVIRONMENTAL DATA RESOURCES, INC. BE LIABLE FOR ANY DAMAGES, INCLUDING WITHOUT LIMITATION, SPECIAL, INCIDENTAL, CONSEQUENTIAL OR EXEMPLARY DAMAGES. ANY LIABILITY ON THE PART OF ENVIRONMENTAL DATA RESOURCES, INC. IS STRICTLY LIMITED TO A REFUND OF THE AMOUNT PAID FOR THIS REPORT. Purchaser accepts this report "AS IS". Any analyses, estimates, ratings, or risk codes provided in this report are provided for illustrative purposes only, and are not intended to provide, nor constitute, an Environmental Site Assessment performed by an environmental professional can produce information regarding the environmental risk for any property. Additionally, the information provided in this Report is not to be construed as legal advice.

Copyright ©2008 by Environmental Data Resources, Inc. All rights reserved. Reproduction in any media or format, in whole or in part, or any report or map of Environmental Data Resources, Inc., or its affiliates, is prohibited without prior written permission. EDR and its logos (including Sanborn and Sanborn Map) are trademarks of Environmental Data Resources, Inc. or its affiliates. All other trademarks used herein are the property of their respective owners.

## SECTION 1: FACILITY SUMMARY

AREA	FACILITY	FACILITY 1 LIEN GENERATING STATION
<b>WASTE MANAGEMENT</b> Facility generates hazardous waste (RCRA)	Facility treats, stores, or disposes of hazardous waste on-site (RCRA/TSEF)	1001 NORTH MIK RD LANAI CITY, HI 96763 COUNTY OF MAUI EPA #HIIR00000141
Facility has received Notices of Violations (RCRA/VIOL)	Facility has been subject to RCRA administrative actions (RAATS)	YES - y4 NO NO NO
Facility handles PCBs (PADS)	Facility uses radioactive materials (MLTS)	YES - pf NO
Facility manages registered aboveground storage tanks (AST)	Facility manages registered underground storage tanks (UST)	NO NO
Facility has reported leaking underground storage tank incidents (LUST)	Facility has reported emergency releases to the soil (ERNS)	NO NO
Facility has reported emergency material incidents to ECT (HMIRS)	Facility is a Superfund Site (NPL)	NO NO
Facility has a known or suspect abandoned, inactive or unnotified hazardous waste site (CERCLIS)	Facility has a reported Superfund Lien on it (LENS)	NO NO
Facility is listed as a state hazardous waste site (SHWS)	Facility has disposed of solid waste on-site (SWFLF)	NO NO
<b>MULTIMEDIA</b> Facility uses toxic chemicals and has notified EPA under SARA Title II, Section 313 (TRIS)	Facility produces pesticides and has notified EPA under Section 7 of FIFRA (SSITS)	NO NO
Facility manufactures or imports toxic chemicals on the TSCA list (TSCA)	Facility has inspections under FIFRA, TSCA or EPCRA (FTTS)	NO NO
Facility is listed in EPA's index system (FINDS)	Facility is listed in either database records (OTHER)	NO NO
<b>POTENTIAL SUPERFUND LIABILITY</b> Facility has a list of potentially responsible parties PRP	<b>TOTAL (YES)</b>	NO 2

## SECTION 2: FACILITY DETAIL REPORTS

### WASTE MANAGEMENT

Facility generates hazardous waste

**DATABASE:** Resource Conservation and Recovery Information (RCRAInfo)

MIKI BASIN GENERATING STATION  
1001 NORTH MIKI RD.  
LANAI CITY, HI 96763  
EDR ID #1007092130

RCRA-CESQG: 03/19/2003

Facility name: MIKI BASIN GENERATING STATION  
Facility address: LANAI CITY, HI 96763

EPA ID: PIR00003041  
Mailing address: KA-HULU, HI 96733-6898

Contact: DONN FUKADA  
Contact address: 1007 N MIKI RD  
LANAI CITY, HI 96763

Contact country: US

Contact telephone: 808-543-4525

Contact email: Not reported

EPA Region: 09

Description: Conditionally Exempt Small Quantity Generator

100 kg or less of acutely hazardous waste per calendar month, and accumulates 1000 kg or less of hazardous waste at any time; or generates 1 kg or less of acutely hazardous waste per calendar month, and accumulates at any time: 1 kg or less of acutely hazardous waste; or 100 kg or less of any residue or other debris resulting from the cleanup of a spill, into or on any land or water, of acutely hazardous waste during any calendar month, and accumulates at any time: 1 kg or less of acutely hazardous waste; or 100 kg or less of any residue or other debris resulting from the cleanup of a spill, into or on any land or water, of acutely hazardous waste

Owner/Operator Summary:

Owner/operator name: MAUI ELEC CO LTD

Owner/operator address: Not reported

Owner/operator country: US

Owner/operator telephone: Not reported

Legal status: Private

Owner/Operator Type: Operator

Owner/Op start date: 01/01/1994

Owner/Op end date: Not reported

Owner/operator name: MAUI ELEC CO LTD

Owner/operator address: Not reported

Owner/operator country: US

Owner/operator telephone: Not reported

Legal status: Private

Owner/Operator Type: Operator

Owner/Op start date: 01/01/1994

Owner/Op end date: Not reported

Handler Activities Summary:

U.S. importer of hazardous waste: No  
Mixed waste (haz. and radioactive): No  
Export to another country: No  
Transporter of hazardous waste: No  
Treater, storer or disposer of HW: No  
Underground injection activity: No  
On-site burner exemption: No  
F 101/102 fuel burner: No  
Used oil processor: No  
Used oil refiner: No  
Used oil transfer to burner: No  
Used oil Specification marketer: Yes  
Used oil transfer facility: No  
Used oil transporter: No

Historical Generators:

## SECTION 2: FACILITY DETAIL REPORTS

...Continued...

Date form received by agency: 05/24/1995  
Facility name: MIKI BASIN GENERATING STATION  
Site name: MAUI ELECTRIC CO LTD MIKI BASIN POWER PL  
Classification: Small Quantity Generator

Hazardous Waste Summary:

Waste code: D001

Waste name: IGNITABLE HAZARDOUS WASTES ARE THOSE WASTES WHICH HAVE A FLASHPOINT OF LESS THAN 140 DEGREES FAHRENHEIT AS DETERMINED BY A PENSKY-MARTENS CLOSED CUP FLASH POINT TESTER. NOT ALL WASTES WHICH MEET THE FLASH POINT OF A WASTE IS TO REVIEW THE MATERIAL SAFETY DATA SHEET FOR HAZARDOUS INFORMATION. A COMMONLY USED DISTRIBUTOR OF THE MATERIAL LACQUER THINNER IS AN EXAMPLE OF A COMMONLY USED SOLVENT WHICH WOULD BE CONSIDERED AS IGNITABLE HAZARDOUS WASTE.

Waste code: D006

Waste name: CADMIUM

Waste code: D008

Waste name: LEAD

Violation Status: No violations found

## SECTION 2: FACILITY DETAIL REPORTS

...Continued...

### WASTE MANAGEMENT

#### Facility handles PCBs

#### DATABASE: PCB Activity Database System (PADS)

MIKI BASIN GENERATING STATION  
1001 NORTH MIKI RD.  
LANAI CITY, HI 96763  
EDR ID #1007092130

PADS:  
EPA ID: HIR00000141  
Facility name: MIKI BASIN GENERATING STATION  
Facility Address: 1001 NORTH MIKI RD.  
LANAI CITY, HI 96763  
Facility country: US  
Generator: No  
Transporter: No  
Storer: No  
Research facility: No  
Facility owner name: MAUI ELECTRIC CO., LTD  
Contact name: Donn Fukuda  
Contact address: (937)644-4325  
Mailing address: P.O. Box 630608  
Lanai City, HI 96763  
Mailing country: US  
Cert. status: Not reported  
Cert. name: Not reported  
Cert. date: 02/07/2005  
Date received: 03/24/2005

## SECTION 3: DATABASES AND UPDATE DATES

To maintain currency of the following federal, state and local databases, EDR contacts the appropriate government agency on a monthly or quarterly basis as required.

**Elapsed ASTM days:** Provides confirmation that this report meets or exceeds the 90-day updating requirement of the ASTM standard.

### DATABASES FOUND IN THIS REPORT

#### PADS: PCB Activity Database System

Source: EPA  
Telephone: 202-566-0500  
PCB Activity Database: PADS identifies generators, transporters, commercial storers and/or brokers and disposers of PCB's who are required to notify the EPA of such activities.  
Date of Government Version: 06/01/2013  
Database Release Frequency: Annually  
Date of Last EDR Contact: 01/28/2014  
Date of Next Scheduled Update: 04/28/2014

#### RCRA-CESQG: RCRA - Conditionally Exempt Small Quantity Generator

Source: Environmental Protection Agency  
Telephone: 703-308-8895  
RCRA-CESQG: RCRA-CESQG is a comprehensive information system providing access to data supporting the Resource Conservation and Recovery Act (RCRA) of 1976 and the Hazardous and Solid Waste Amendments (HSWA) of 1984. The database includes selective information on sites which generate, transport, store, treat and/or dispose of hazardous waste as defined by the Resource Conservation and Recovery Act (RCRA). Conditionally exempt small quantity generators (CESQGs) generate less than 100 kg of hazardous waste, or less than 1 kg of acutely hazardous waste per month.  
Date of Government Version: 09/10/2013  
Database Release Frequency: Varies  
Date of Last EDR Contact: 03/13/2014  
Date of Next Scheduled Update: 04/14/2014

**MAUI ELECTRIC CO - MIKI BASIN**  
1001 N MIKI RD  
LANAI CITY, HI 96763

Inquiry Number:  
March 31, 2014

## EDR Site Report™

### TABLE OF CONTENTS

The EDR-Site Report™ is a comprehensive presentation of government filings on a facility identified in a search of federal, state and local environmental databases. The report is divided into three sections:

<b>Section 1: Facility Summary</b> .....	<b>Page 3</b>
Summary of facility filings including a review of the following areas: waste management, waste disposal, multi-media issues, and Superfund liability.	
<b>Section 2: Facility Detail Reports</b> .....	<b>Page 4</b>
All available detailed information from databases where sites are identified.	
<b>Section 3: Databases and Update Information.</b> .....	<b>Page 15</b>
Name, source, update dates, contact phone number and description of each of the databases for this report.	

**Thank you for your business.**  
Please contact EDR at 1-800-352-0050  
with any questions or comments.

#### Disclaimer - Copyright and Trademark Notice

This report contains information obtained from a variety of public and other sources reasonably available to Environmental Data Resources, Inc. It cannot be concluded from this Report that coverage information for the target and surrounding properties does not exist from other sources. Environmental Data Resources, Inc. specifically disclaims the making of any such warranties, including without limitation, MERCHANTABILITY OR FITNESS FOR A PARTICULAR USE OR PURPOSE. ALL RISK IS ASSUMED BY THE USER. IN NO EVENT SHALL ENVIRONMENTAL DATA RESOURCES, INC. BE LIABLE TO ANYONE, WHETHER ARISING OUT OF ERRORS OR OMISSIONS, NEGLIGENCE, ACCIDENT OR ANY OTHER CAUSE, FOR ANY LOSS OR DAMAGE, INCLUDING, WITHOUT LIMITATION, SPECIAL, INCIDENTAL, CONSEQUENTIAL OR PUNITIVE DAMAGES, OF ANY KIND OR CHARACTER, INCLUDING REASONABLE ATTORNEY'S FEES, LIMITED TO A REFUND OF THE AMOUNT PAID FOR THIS REPORT. Purchaser accepts this report "AS IS". Any analyses, estimates, ratings, or risk codes provided in this report are provided for illustrative purposes only, and are not intended to provide, nor should they be interpreted as providing any facts regarding, or prediction or forecast of, any environmental risk for any Phase I Environmental Site Assessment performed by an environmental professional can produce information regarding the environmental risk for any property. Additionally, the information provided in this report is not to be construed as legal advice.

Copyright 2008 by Environmental Data Resources, Inc. All rights reserved. Reproduction in any media or format, in whole or in part, of any report or map of Environmental Data Resources, Inc., or its affiliates, is prohibited without prior written permission. EDR and its logos (including Sanborn and Sanborn Map) are trademarks of Environmental Data Resources, Inc. or its affiliates. All other trademarks used herein are the property of their respective owners.

6 Armstrong Road, 4th floor  
Shelton, CT 06484  
Toll Free: 800-352-0050  
www.edrnet.com



SECTION 1: FACILITY SUMMARY

AREA	FACILITY	FACILITY 1
		MAUI ELECTRIC CO - MIKI BASIN LANAI CITY, HI 96763 EDR ID #1001024214 EPA #11005402137
WASTE MANAGEMENT		NO
Facility generates hazardous waste (RCRA)		NO
Facility treats, stores, or disposes of hazardous waste on-site (RCRA/TSDF)		NO
Facility has received Notices of Violations (RCRA/VIOL)		NO
Facility has been subject to RCRA administrative actions (RAATS)		NO
Facility has been subject to corrective actions (CORRACTS)		NO
Facility handles PCBs (PABS)		NO
Facility uses radioactive materials (MLTS)		NO
Facility manages registered aboveground storage tanks (AST)		NO
Facility manages registered underground storage tanks (UST)		NO
Facility has reported leaking underground storage tank incidents (LUST)		NO
Facility has reported emergency releases to the soil (ERNS)		NO
Facility has reported hazardous material incidents to DOT (HMIRS)		NO
WASTE DISPOSAL		NO
Facility is a Superfund Site (NPL)		NO
Facility has a known or suspected abandoned, inactive or uncontrolled hazardous waste site (CERCLIS)		NO
Facility has a reported Superfund Lien on it (LIENS)		NO
Facility is listed as a state hazardous waste site (SHWS)		NO
Facility has disposed of solid waste on-site (SWP/LF)		NO
MULTIMEDIA		NO
Facility manufactures, processes, or uses chemicals under SARA Title III, Section 313 (TRIS)		NO
Facility produces pesticides, and has notified EPA under Section 7 of FIFRA (SSTS)		NO
Facility manufactures or imports toxic chemicals on the TSCA list (TSCA)		NO
Facility has inspections under FIFRA, TSCA or EPCRA (TITS)		NO
Facility is listed in EPA's index system (FINDS)		YES - p4
POTENTIAL SUPERFUND LIABILITY		YES - p9
Facility has a list of potentially responsible parties PRP		NO
TOTAL (YES)		2

SECTION 2: FACILITY DETAIL REPORTS

MULTIMEDIA

Facility is listed in EPA's index system

DATABASE: Facility Index System (FINDS)

MAUI ELECTRIC CO - MIKI BASIN  
LANAI CITY, HI 96763  
EDR ID #1001024214

This site is listed in the Federal FINDS database. The FINDS database may contain references to records from government databases included elsewhere in the report. Please note: the FINDS database may also contain references to out of date records formerly associated with the site.

Registry ID: 110001764029  
 Facility Name: MAUI ELECTRIC CO (MECO) - MIKI BASIN GENERATING STATION  
 Facility Address: LANAI CITY, HI  
 Facility URL: http://iaspub.epa.gov/enviro/rl\_query\_detail\_disp\_program\_facility?p\_registry\_id=110001764029  
 FIPS: 15009  
 Fed Facility: Not reported  
 Tribal Name: Not reported  
 Congressional District: 02  
 Hydrologic Unit Code: 20040000  
 State: STATIONARY  
 Date Created: 01-MAR-00  
 Date Updated: 29-AUG-13  
 U.S.-Mexico Border: Not reported  
 Longitude: -156.35392  
 Horizontal Collection: Not reported  
 Horizontal Accuracy: Not reported  
 Reference Point: FACILITY CENTROID  
 Coordinates Source: Not reported  
 Environmental Interest/Information System: AFS (Aerometric Information Retrieval System (AIRS) Facility Subsystem) replaces the former Compliance Data System (CDS), the National Emission Data System (NEDS), and the National Air Quality Data System (NAQDS). AFS is the national repository for information concerning airborne pollution in the United States. AFS is used to track emissions and compliance data from industrial plants. AFS data are utilized by states to prepare State Implementation Plans to comply with regulatory programs and by EPA as an input for the estimation of air quality impacts. AFS data are used by EPA to design and support facility operating permits required under Title V of the Clean Air Act.

The NEI (National Emissions Inventory) database contains information on stationary and mobile sources that emit criteria air pollutants and their precursors, as well as hazardous air pollutants (HAPs).  
 US EPA TRIS (Toxic Release Inventory System) contains information from facilities on the amounts of over 300 listed toxic chemicals that these facilities release directly to air, water, land, or that are transported off-site.  
 US Emissions & Generation Resource Database (EGRID) contains data on emissions and resource mix for virtually every power plant and company that generates electricity in the United States.  
 RCRAInfo is a national information system that supports the Resource Conservation and Recovery Act (RCRA) program through the tracking of events and activities related to facilities that generate, transport and treat, store, or dispose of hazardous waste. RCRAInfo provides information to track the notification, permit, compliance, and corrective action activities required under RCRA.

ELECTRIC GENERATOR

STATE MASTER

CRITERIA AND HAZARDOUS AIR POLLUTANT INVENTORY

US EPA RACT/RACT/LAER Clearinghouse (RBLCL) database contains case-specific information on the "Best Available" air pollution technologies that have been required to reduce the emission of air pollutants from stationary sources (e.g., power plants, steel mills, chemical plants, etc.). RACT, or Reasonably Achievable Control Technology, is a regulatory strategy that requires that a source meet national ambient air quality standards, BACT, or Best Available.

## SECTION 2: FACILITY DETAIL REPORTS

...Continued...

Control Technology, is required on major new or modified sources in clean areas. LAER revision Rate, is required on major new or modified sources in non-attainment areas.

Registry ID: 110055402737  
 Facility Name: MAUI ELECTRIC GENERATING STATION  
 Family Address: 1001 N MIKI RD  
 LANAI CITY, HI  
 Facility URL: http://espub.epa.gov/eiro/facility\_query?p\_query\_facility\_id=110055402737  
 PIPS: Not reported  
 Tribal Land: Not reported  
 Tribal Name: Not reported  
 Congressional District: 01  
 Hydrologic Unit Code: 20060000  
 County: STATIONARY  
 Site Type: 25-JUL-13  
 Date Created: Not reported  
 Date Updated: Not reported  
 U.S.-Mexico Border: 21-157,89732  
 Longitude: ADDRESS MATCHING-OTHER  
 Horizontal Collection: 149  
 Horizontal Accuracy: 149  
 Referential Point: UNKNOWN  
 NAD83: Not reported  
 Coordinates Source: Environmental Interest/Information System  
 Program System ID: 928711  
 Program Sys Name: CRITERIA AND HAZARDOUS AIR POLLUTANT INVENTORY  
 Env. Interest Start Dt.: Not reported  
 Env. Interest End Dt.: Not reported  
 Data Source: EIS  
 Active Code: Yes  
 Program System ID: 726460  
 Program Sys Name: ELECTRIC GENERATOR  
 Env. Interest Type: Not reported  
 Start Date Qualifier: Not reported  
 Env. Interest End Dt.: Not reported  
 Data Source: EIA-860  
 Active Code: Not reported  
 Program System ID: 7064  
 Program Sys Name: ELECTRIC POWER GENERATOR (OIL BASED)  
 Env. Interest Type: Not reported  
 Start Date Qualifier: Not reported  
 Env. Interest End Dt.: Not reported  
 Data Source: EGRID  
 Active Code: Not reported  
 Program System ID: NEIH12543  
 Program Sys Name: CRITERIA AND HAZARDOUS AIR POLLUTANT INVENTORY  
 Env. Interest Type: Not reported  
 Start Date Qualifier: Not reported  
 Env. Interest End Dt.: Not reported  
 Data Source: NEI  
 Active Code: Not reported  
 Program System ID: 3720  
 Program Sys Name: AIR MAJOR  
 Env. Interest Type: 04-MAY-96  
 Start Date Qualifier: ORIGINAL PERMIT ISSUE DATE  
 Env. Interest End Dt.: Not reported  
 Data Source: RBLC  
 Active Code: Not reported  
 Program System ID: HIR00000141  
 Program Sys Name: RCRAINFO  
 Env. Interest Type: CESQG  
 Start Date Qualifier: 24-MAY-95  
 Env. Interest End Dt.: Not reported  
 Data Source: PIFICATION DATE  
 Active Code: Not reported

## SECTION 2: FACILITY DETAIL REPORTS

...Continued...

Data Source: RCRAINFO  
 Active Code: Yes  
 Program System ID: 1609090035  
 Program Sys Name: AIRS/AES  
 Env. Interest Type: AIR MAJOR  
 Start Date Qualifier: Not reported  
 Env. Interest End Dt.: Not reported  
 Data Source: ARS/AFS  
 Active Code: Yes  
 Program System ID: 96763MLCTR1001N  
 Program Sys Name: TRIS  
 Env. Interest Type: TRI REPORTER  
 Start Date Qualifier: 31-DEC-00  
 Env. Interest End Dt.: FIRST REPORTING YEAR  
 Data Source: Not reported  
 Active Code: TRI REPORTING FORM  
 Program System ID: 8315  
 Program Sys Name: H-EHW  
 Env. Interest Type: STATE MASTER  
 Start Date Qualifier: Not reported  
 Env. Interest End Dt.: Not reported  
 Data Source: Not reported  
 Active Code: H-EHW  
 Alternative Name: MAUI ELECTRIC CO LTD MIKI BASIN GENERATING STATION  
 Alternative Name: MAUI ELECTRIC CO LTD MIKI BASIN POWER PL  
 Alternative Name: MAUI ELECTRIC CO LTD MIKI BASIN  
 Alternative Name: MAUI ELECTRIC COMPANY LTD  
 Alternative Name: MECO - MIKI BASIN POWER PLANT  
 Alternative Name: MIKI BASIN  
 Contact Name: DONN, FUKADA  
 Contact Title: REGULATORY CONTACT  
 Contact Telephone: Not reported  
 Contact Fax: 808-543-4525  
 Contact Email: Not reported  
 Contact Address: 1001 N MIKI RD  
 LANAI CITY, HI 96763  
 Contact Name: KAJI AWAJ DICKSON  
 Contact Title: PUBLIC CONTACT  
 Contact Telephone: Not reported  
 Contact Fax: (808) 872-3283  
 Contact Email: Not reported  
 Contact Address: Not reported  
 Contact Name: VIRGIL KONG  
 Contact Title: CONTACT  
 Contact Telephone: Not reported  
 Contact Fax: (808) 543-4517  
 Contact Email: Not reported  
 Contact Address: Not reported  
 Contact Name: PUBLIC CONTACT  
 Contact Title: Not reported  
 Contact Telephone: Not reported  
 Contact Fax: Not reported  
 Contact Email: Not reported  
 Contact Address: LANAI, MIKI BASIN GENERATING STATION  
 NAICS Code: 221112(FOSSIL FUEL ELECTRIC POWER GENERATION)  
 NAICS Code: 221121(ELECTRIC BULK POWER TRANSMISSION AND CONTROL)  
 SIC Code: 4811(ELECTRIC SERVICES)  
 Organization Name: Not reported  
 Affiliation Type: PRIVATE/OPERATOR  
 Organization Type: PRIVATE



**SECTION 2: FACILITY DETAIL REPORTS**

...Continued...

DUNS Number: 009927164  
 Division: Not reported  
 Telephone Number: Not reported  
 Alternative Number: Not reported  
 Fax Number: Not reported  
 Email: Not reported  
 State Business ID: Not reported  
 Parent Name: Not reported  
 Parent DUNS: Not reported  
 Mailing Address: Not reported

Organization Name: MAUI ELECTRIC CO LTD  
 Affiliation Type: OPERATOR  
 Organization Type: Not reported  
 DUNS Number: Not reported  
 Division Name: Not reported  
 Telephone Number: Not reported  
 Alternative Number: Not reported  
 Fax Number: Not reported  
 Email: Not reported  
 State Business ID: Not reported  
 Parent Name: Not reported  
 Parent DUNS: Not reported  
 Mailing Address: Not reported

Organization Name: MAUI ELECTRIC CO LTD  
 Affiliation Type: OWNER  
 Organization Type: Not reported  
 DUNS Number: Not reported  
 Division Name: Not reported  
 Telephone Number: Not reported  
 Alternative Number: Not reported  
 Fax Number: Not reported  
 Email: Not reported  
 State Business ID: Not reported  
 Parent Name: Not reported  
 Parent DUNS: Not reported  
 Mailing Address: Not reported

Organization Name: HAWAIIAN ELECTRIC INDUSTRIES INC  
 Affiliation Type: PARENT COMPANY  
 Organization Type: PRIVATE  
 DUNS Number: 103901773  
 Division Name: Not reported  
 Telephone Number: Not reported  
 Alternative Number: Not reported  
 Fax Number: Not reported  
 Email: Not reported  
 State Business ID: Not reported  
 Parent Name: Not reported  
 Parent DUNS: Not reported  
 Mailing Address: Not reported

Organization Name: MAUI ELECTRIC CO LTD  
 Affiliation Type: OWNER/OPERATOR  
 Organization Type: Not reported  
 DUNS Number: Not reported  
 Division Name: Not reported  
 Telephone Number: Not reported  
 Alternative Number: Not reported  
 Fax Number: Not reported  
 Email: Not reported  
 State Business ID: Not reported  
 Parent Name: Not reported  
 Parent DUNS: Not reported  
 Mailing Address: P O BOX 398  
 KAHULUI - MAUI, HI 967320000

Organization Name: MAUI ELECTRIC COMPANY, LTD.  
 Affiliation Type: OPERATOR  
 Organization Type: PRIVATE  
 DUNS Number: Not reported  
 Division Name: Not reported  
 Telephone Number: Not reported  
 Alternative Number: Not reported

**SECTION 2: FACILITY DETAIL REPORTS**

...Continued...

Fax Number: Not reported  
 Email: Not reported  
 State Business ID: Not reported  
 Parent Name: Not reported  
 Parent DUNS: Not reported  
 Mailing Address: Not reported

Organization Name: MAUI ELECTRIC COMPANY, LTD.  
 Affiliation Type: OWNER  
 Organization Type: PRIVATE  
 DUNS Number: Not reported  
 Division Name: Not reported  
 Telephone Number: Not reported  
 Alternative Number: Not reported  
 Fax Number: Not reported  
 Email: Not reported  
 State Business ID: Not reported  
 Parent Name: Not reported  
 Parent DUNS: Not reported  
 Mailing Address: Not reported

**SECTION 2: FACILITY DETAIL REPORTS**

...Continued...

**MULTIMEDIA**

Facility is listed in other database records

**DATABASE: Other Database Records (OTHER)**

MAUI ELECTRIC CO - MIKI BASIN  
 1001 N MIKI RD  
 LANAI CITY, HI 96763  
 EDR ID #1001024214

**AIRS (AFS):**

Compliance and Violation Data Major Sources:  
 EPA plant ID: 1001024214  
 Plant address: MAUI ELECTRIC CO - MIKI BASIN  
 1001 N MIKI RD  
 LANAI CITY, HI 96763  
 County: MAUI  
 Region: Not reported  
 District #: Not reported  
 Air quality critl region: Not reported  
 Sic code: 4911  
 Sic code desc: ELECTRIC SERVICES  
 NAIC code description: Fossil Fuel Electric Power Generation  
 Default compliance classf: IN COMPLIANCE - INSPECTION  
 Default compliance status: ACTUAL OR POTENTIAL EMISSIONS ARE ABOVE THE APPLICABLE MAJOR SOURCE THRESHOLDS  
 Govt facility: ALL OTHER FACILITIES NOT OWNED OR OPERATED BY A FEDERAL, STATE, OR LOCAL GOVERNMENT  
 Current HPV: Not reported

**Compliance and Enforcement Major Issues:**

Air program:	SIP SOURCE
National action type:	MULTIMEDIA INSPECTION - LEVEL 2 OR GREATER
Date achieved:	01/03/21
Penalty amount:	000000000
Air program:	TITLE V PERMITS
National action type:	MULTIMEDIA INSPECTION - LEVEL 2 OR GREATER
Date achieved:	01/03/21
Penalty amount:	000000000
Air program:	SIP SOURCE
National action type:	MULTIMEDIA INSPECTION - LEVEL 2 OR GREATER
Date achieved:	01/03/21
Penalty amount:	000000000
Air program:	TITLE V PERMITS
National action type:	SIL REQ (OJO COND) STACK TEST/NOT OBSV BUT REVWD
Date achieved:	02/05/20
Penalty amount:	Not reported
Air program:	TITLE V PERMITS
National action type:	COMPLIANCE CERTIFICATION STATE REVIEW
Date achieved:	02/09/09
Penalty amount:	Not reported
Air program:	TITLE V PERMITS
National action type:	STATE CONDUCTED FCE / ON-SITE
Date achieved:	02/09/09
Penalty amount:	Not reported
Air program:	TITLE V PERMITS
National action type:	SIL REQ (OJO COND) STACK TEST/NOT OBSV BUT REVWD
Date achieved:	02/09/16
Penalty amount:	Not reported
Air program:	TITLE V PERMITS
National action type:	STATE DAY 0
Date achieved:	03/05/30
Penalty amount:	Not reported
Air program:	TITLE V PERMITS
National action type:	NXXXXX
Date achieved:	03/05/30
Penalty amount:	Not reported
Air program:	TITLE V PERMITS
National action type:	NXXXXX

**SECTION 2: FACILITY DETAIL REPORTS**

...Continued...

Date achieved:	03/05/31
Penalty amount:	000004900
Air program:	TITLE V PERMITS
National action type:	SV RESOLVED
Date achieved:	03/07/07
Penalty amount:	Not reported
Air program:	TITLE V PERMITS
National action type:	SIL REQ (OJO COND) STACK TEST/NOT OBSV BUT REVWD
Date achieved:	03/09/04
Penalty amount:	Not reported
Air program:	TITLE V PERMITS
National action type:	COMPLIANCE CERTIFICATION STATE REVIEW
Date achieved:	03/09/04
Penalty amount:	Not reported
Air program:	TITLE V PERMITS
National action type:	STATE CONDUCTED FCE / ON-SITE
Date achieved:	03/09/04
Penalty amount:	Not reported
Air program:	TITLE V PERMITS
National action type:	TITLE V COMPLIANCE CERT DUE/RECEIVED BY
Date achieved:	04/04/02
Penalty amount:	Not reported
Air program:	TITLE V PERMITS
National action type:	COMPLIANCE CERTIFICATION EPA REVIEW
Date achieved:	04/07/20
Penalty amount:	Not reported
Air program:	TITLE V PERMITS
National action type:	SIL REQ (OJO COND) STACK TEST/NOT OBSV BUT REVWD
Date achieved:	04/07/22
Penalty amount:	Not reported
Air program:	TITLE V PERMITS
National action type:	COMPLIANCE CERTIFICATION STATE REVIEW
Date achieved:	04/07/22
Penalty amount:	Not reported
Air program:	TITLE V PERMITS
National action type:	STATE CONDUCTED FCE / ON-SITE
Date achieved:	04/07/22
Penalty amount:	Not reported
Air program:	TITLE V PERMITS
National action type:	SIL REQ (OJO COND) STACK TEST/NOT OBSV BUT REVWD
Date achieved:	05/08/11
Penalty amount:	Not reported
Air program:	TITLE V PERMITS
National action type:	COMPLIANCE CERTIFICATION STATE REVIEW
Date achieved:	05/08/11
Penalty amount:	Not reported
Air program:	TITLE V PERMITS
National action type:	STATE CONDUCTED FCE / ON-SITE
Date achieved:	05/08/11
Penalty amount:	Not reported
Air program:	TITLE V PERMITS
National action type:	TITLE V COMPLIANCE CERT DUE/RECEIVED BY
Date achieved:	05/08/11
Penalty amount:	Not reported
Air program:	TITLE V PERMITS
National action type:	COMPLIANCE CERTIFICATION STATE REVIEW
Date achieved:	06/07/26
Penalty amount:	Not reported
Air program:	TITLE V PERMITS
National action type:	STATE CONDUCTED FCE / ON-SITE
Date achieved:	06/07/26
Penalty amount:	Not reported
Air program:	TITLE V PERMITS
National action type:	TITLE V COMPLIANCE CERT DUE/RECEIVED BY
Date achieved:	07/04/03
Penalty amount:	Not reported
Air program:	TITLE V PERMITS
National action type:	STATE CONDUCTED FCE / ON-SITE

**SECTION 2: FACILITY DETAIL REPORTS**

...Continued...

Date achieved:	070723	Not reported
Penalty amount:		
Air program:	TITLE V PERMITS	
National action type:	SIL REQ (O/O COND) STACK TEST/NOT OBSV BUT REWMD	
Date achieved:	070723	Not reported
Penalty amount:		
Air program:	TITLE V PERMITS	
National action type:	COMPLIANCE CERTIFICATION STATE REVIEW	
Date achieved:	070723	Not reported
Penalty amount:		
Air program:	TITLE V PERMITS	
National action type:	TITLE V COMPLIANCE CERT DUE/RECEIVED BY	
Date achieved:	030323	Not reported
Penalty amount:		
Air program:	TITLE V PERMITS	
National action type:	SIL REQ (O/O COND) STACK TEST/NOT OBSV BUT REWMD	
Date achieved:	070723	Not reported
Penalty amount:		
Air program:	TITLE V PERMITS	
National action type:	STATE CONDUCTED FCE / ON-SITE	
Date achieved:	070723	Not reported
Penalty amount:		
Air program:	TITLE V PERMITS	
National action type:	COMPLIANCE CERTIFICATION STATE REVIEW	
Date achieved:	070723	Not reported
Penalty amount:		
Air program:	TITLE V PERMITS	
National action type:	TITLE V COMPLIANCE CERT DUE/RECEIVED BY	
Date achieved:	030323	Not reported
Penalty amount:		
Air program:	TITLE V PERMITS	
National action type:	STATE CONDUCTED FCE / ON-SITE	
Date achieved:	090813	Not reported
Penalty amount:		
Air program:	TITLE V PERMITS	
National action type:	SIL REQ (O/O COND) STACK TEST/NOT OBSV BUT REWMD	
Date achieved:	090813	Not reported
Penalty amount:		
Air program:	TITLE V PERMITS	
National action type:	COMPLIANCE CERTIFICATION STATE REVIEW	
Date achieved:	090813	Not reported
Penalty amount:		
Air program:	TITLE V PERMITS	
National action type:	TITLE V COMPLIANCE CERT DUE/RECEIVED BY	
Date achieved:	100518	Not reported
Penalty amount:		
Air program:	TITLE V PERMITS	
National action type:	COMPLIANCE CERTIFICATION STATE REVIEW	
Date achieved:	100729	Not reported
Penalty amount:		
Air program:	TITLE V PERMITS	
National action type:	SIL REQ (O/O COND) STACK TEST/NOT OBSV BUT REWMD	
Date achieved:	100729	Not reported
Penalty amount:		
Air program:	TITLE V PERMITS	
National action type:	STATE CONDUCTED FCE / ON-SITE	
Date achieved:	100729	Not reported
Penalty amount:		
Air program:	TITLE V PERMITS	
National action type:	COMPLIANCE CERTIFICATION STATE REVIEW	
Date achieved:	110719	Not reported
Penalty amount:		
Air program:	TITLE V PERMITS	
National action type:	SIL REQ (O/O COND) STACK TEST/NOT OBSV BUT REWMD	
Date achieved:	110719	Not reported
Penalty amount:		
Air program:	TITLE V PERMITS	
National action type:	STATE CONDUCTED FCE / ON-SITE	

**SECTION 2: FACILITY DETAIL REPORTS**

...Continued...

Date achieved:	110719	Not reported
Penalty amount:		
Air program:	TITLE V PERMITS	
National action type:	COMPLIANCE CERTIFICATION STATE REVIEW	
Date achieved:	120724	Not reported
Penalty amount:		
Air program:	TITLE V PERMITS	
National action type:	STATE CONDUCTED FCE / ON-SITE	
Date achieved:	120724	Not reported
Penalty amount:		
Air program:	TITLE V PERMITS	
National action type:	SIL REQ (O/O COND) STACK TEST/NOT OBSV BUT REWMD	
Date achieved:	120724	Not reported
Penalty amount:		
Air program:	SIP SOURCE	
National action type:	MULTI MEDIA INSPECTION - LEVEL 2 OR GREATER	
Date achieved:	970402	000000000
Penalty amount:		
Air program:	SIP SOURCE	
National action type:	MULTI MEDIA INSPECTION - LEVEL 2 OR GREATER	
Date achieved:	980407	000000000
Penalty amount:		
Air program:	TITLE V PERMITS	
National action type:	NXXXX	
Date achieved:	980810	000000000
Penalty amount:		
Air program:	TITLE V PERMITS	
National action type:	STATE CONSENT AGREEMENT FILED	
Date achieved:	980810	000000000
Penalty amount:		
Air program:	TITLE V PERMITS	
National action type:	STATE DAY 0	
Date achieved:	980810	000000000
Penalty amount:		
Air program:	TITLE V PERMITS	
National action type:	SV RESOLVED	
Date achieved:	980810	000000000
Penalty amount:		
Air program:	SIP SOURCE	
National action type:	MULTI MEDIA INSPECTION - LEVEL 2 OR GREATER	
Date achieved:	980819	000000000
Penalty amount:		

Historical Compliance Minor Sources:

State compliance status:	IN COMPLIANCE - INSPECTION
Hist compliance date:	1004
Air prog code hist file:	SIP SOURCE
State compliance status:	IN COMPLIANCE - INSPECTION
Hist compliance date:	1004
Air prog code hist file:	TITLE V PERMITS
State compliance status:	IN COMPLIANCE - INSPECTION
Hist compliance date:	1101
Air prog code hist file:	SIP SOURCE
State compliance status:	IN COMPLIANCE - INSPECTION
Hist compliance date:	1101
Air prog code hist file:	TITLE V PERMITS
State compliance status:	IN COMPLIANCE - INSPECTION
Hist compliance date:	1102
Air prog code hist file:	SIP SOURCE
State compliance status:	IN COMPLIANCE - INSPECTION
Hist compliance date:	1102
Air prog code hist file:	TITLE V PERMITS
State compliance status:	IN COMPLIANCE - INSPECTION
Hist compliance date:	1103
Air prog code hist file:	SIP SOURCE
State compliance status:	IN COMPLIANCE - INSPECTION
Hist compliance date:	1103

**SECTION 2: FACILITY DETAIL REPORTS**

...Continued...

Air prog code hist file:

State compliance status:  
Hist compliance date:  
Air prog code hist file:

State compliance status:  
Hist compliance date:  
Air prog code hist file:

State compliance status:  
Hist compliance date:  
Air prog code hist file:

State compliance status:  
Hist compliance date:  
Air prog code hist file:

State compliance status:  
Hist compliance date:  
Air prog code hist file:

State compliance status:  
Hist compliance date:  
Air prog code hist file:

State compliance status:  
Hist compliance date:  
Air prog code hist file:

State compliance status:  
Hist compliance date:  
Air prog code hist file:

State compliance status:  
Hist compliance date:  
Air prog code hist file:

State compliance status:  
Hist compliance date:  
Air prog code hist file:

State compliance status:  
Hist compliance date:  
Air prog code hist file:

State compliance status:  
Hist compliance date:  
Air prog code hist file:

State compliance status:  
Hist compliance date:  
Air prog code hist file:

State compliance status:  
Hist compliance date:  
Air prog code hist file:

State compliance status:  
Hist compliance date:  
Air prog code hist file:

State compliance status:  
Hist compliance date:  
Air prog code hist file:

Permit Information:

Compliance plant ID:  
Permit number:  
Permit category:  
Permit category desc:

Permit Source:

Compliance plant ID:  
Plant name:  
Plant address:

Event Information:

Compliance permit ID:  
Permit number:  
Event action type:  
Event description:

**SECTION 2: FACILITY DETAIL REPORTS**

...Continued...

Event action #:  
Event date:

001  
20021119

TITLE V PERMITS

IN COMPLIANCE - INSPECTION  
1104  
SIP SOURCE

IN COMPLIANCE - INSPECTION  
1104  
TITLE V PERMITS

IN COMPLIANCE - INSPECTION  
1201  
SIP SOURCE

IN COMPLIANCE - INSPECTION  
1202  
TITLE V PERMITS

IN COMPLIANCE - INSPECTION  
1202  
SIP SOURCE

IN COMPLIANCE - INSPECTION  
1203  
TITLE V PERMITS

IN COMPLIANCE - INSPECTION  
1203  
SIP SOURCE

IN COMPLIANCE - INSPECTION  
1203  
TITLE V PERMITS

IN COMPLIANCE - INSPECTION  
1204  
SIP SOURCE

IN COMPLIANCE - INSPECTION  
1205  
TITLE V PERMITS

IN COMPLIANCE - INSPECTION  
1300  
SIP SOURCE

IN COMPLIANCE - INSPECTION  
1301  
TITLE V PERMITS

IN COMPLIANCE - INSPECTION  
1302  
SIP SOURCE

IN COMPLIANCE - INSPECTION  
1302  
TITLE V PERMITS

IN COMPLIANCE - INSPECTION  
1303  
SIP SOURCE

IN COMPLIANCE - INSPECTION  
1303  
TITLE V PERMITS

Permit Information:

Compliance plant ID:  
Permit number:  
Permit category:  
Permit category desc:

Permit Source:

Compliance plant ID:  
Plant name:  
Plant address:

Event Information:

Compliance permit ID:  
Permit number:  
Event action type:  
Event description:

## SECTION 3: DATABASES AND UPDATE DATES

To maintain currency of the following federal, state and local databases, EDR contacts the appropriate government agency on a monthly or quarterly basis as required.

Elapsed ASTM days: Provides confirmation that this report meets or exceeds the 90-day updating requirement of the ASTM standard.

### DATABASES FOUND IN THIS REPORT

#### FINDS: Facility Index System/Facility Registry System

Telephone: Not reported  
Facility Index System: FINDS contains both facility information and 'pointers' to other sources that contain more detail. EDR includes the following FINDS databases in this report: PCS (Permit Compliance System), AIRS (Aerometric Information Retrieval System), DOCKET (Enforcement Information System), FURS (Federal Underground Injection Control), C-DOCKET (Criminal Docket System) used to track criminal enforcement actions for all environmental statutes), FFS (Federal Facilities Information System), STATE (State Environmental Laws and Statutes), and PADS (PCB Activity Data System).

Date of Government Version: 11/18/2013  
Database Release Frequency: Quarterly  
Date of Last EDR Contact: 03/14/2014  
Date of Next Scheduled Update: 06/23/2014

#### US AIRS (AFS): Aerometric Information Retrieval System Facility Subsystem (AFS)

Telephone: 202-564-5962  
The database is a sub-system of Aerometric Information Retrieval System (AIRS). AFS contains information on industrial point sources regulated by State and local air quality agencies. The database provides information on sources of air pollution, such as electric power plants, steel mills, factories, and universities, and provides information about the air pollutants they produce. Action, air program, air program pollutant, and general level plant data. It is used to track emissions and compliance data from industrial plants.

Date of Government Version: 10/23/2013  
Database Release Frequency: Annually  
Date of Last EDR Contact: 03/31/2014  
Date of Next Scheduled Update: 07/14/2014

## APPENDIX B

### USER QUESTIONNAIRE

**ASTM E-1527 PHASE I ENVIRONMENTAL SITE ASSESSMENT  
PRE-SURVEY QUESTIONNAIRE AND DISCLOSURE STATEMENT**

**Borrower:** Please complete this questionnaire before the Consultant's site visit. For those questions that are not applicable to the subject please respond with an "N/A". This document must be signed by the Owner or his/her representative (Item No. 2). If you have any questions about how to answer any of the questions please call. If additional pages for response are necessary please attach them to this form. Clearly mark all references to the appropriate question number(s). This document and your written response to same will be an exhibit in our report.

**1. PROPERTY INFORMATION:**

Property Name: <i>200 ACR Industrial Park - Mifs Road</i>	State: <i>HI</i>	Zip: <i>96767</i>
Property Address: <i>M.K. Road</i>		
City: <i>Lanai City</i>		
Assessor's Parcel Number: <i>(2) 4-9-202:001</i>		

**2. COMPLETED BY**

Signature <i>[Signature]</i>	Date <i>3-20-14</i>
Printed Name <i>Thomas A Ford</i>	Title <i>Director of Development &amp; Construction</i>

**3. ASTM-REQUIRED INQUIRIES**

Property Owner: Name: <i>Pohama Lanai</i>	Phone: <i>808-565-3361</i>	Fax:
Key Site Manager (Site contact): Name: <i>Kevin Ishizaki</i>	Phone: <i>808-565-3353</i>	Fax:
<b>If not residential Property, please provide list of tenants, including contact names and phone numbers.</b>		
Can you provide a Current Title Abstract for the Property, including a chain of Title? If so, please send documents along with completed questionnaire.		
Do you have knowledge of any environmental liens recorded against the Property, or environmentally related Activity and Use Limitations of the Property?		
Do you have any specialized knowledge that would be material in identifying recognized environmental conditions in connection with the Property?		
Are you aware of a reduction in the property value due to environmental issues?		
<b>Please attach explanation of all affirmative answers.</b>		



Please state reason for procuring this Phase 1 ESA:

Qualify for Innocent Landowner defense to CERCLA Liability.

Other: (state below) *As part of a study to purchase land the approval to use the land as an industrial park. It is currently zoned ag.*

**4. PLEASE PROVIDE A GENERAL SITE DESCRIPTION BY COMPLETING THE FOLLOWING TABLE:**

Legal description/ boundary survey plat available for inspector	<input type="checkbox"/> No	<input checked="" type="checkbox"/> Yes
Total Property Size	<i>Site map provided previously</i>	
Total number of buildings	<i>200 ACES</i>	
Total square footage of buildings	<i>0</i>	
Date of construction	<i>0</i>	
Dates of significant renovation	<i>N/A</i> <i>N/A</i>	
Waste water discharge	<input type="checkbox"/> Municipal Sanitary Sewer <input type="checkbox"/> On-site septic system <input checked="" type="checkbox"/> Other <i>Misc currently</i>	
Potable water source	<input type="checkbox"/> Community Water Supplier <input type="checkbox"/> On-site well <input checked="" type="checkbox"/> Other <i>Misc currently</i>	
Please describe prior use of property, if known:		

**5. PREVIOUS INVESTIGATIONS:**

Have any previous environmental investigations been performed at the site?

Yes  No *NPT to my knowledge*

**INVESTIGATION TYPE**  
If yes, please describe conclusions, and attach copy of report(s)

<input type="checkbox"/> Phase 1 ESA
<input type="checkbox"/> Phase 2 ESA
<input type="checkbox"/> Tank Tightness Testing
<input type="checkbox"/> Asbestos Survey/ O&M
<input type="checkbox"/> Radon
<input type="checkbox"/> Lead-based Paint
<input type="checkbox"/> Lead in Water
<input type="checkbox"/> Operations & Maintenance Plan(s)
<input type="checkbox"/> Other



**6. ON SITE OPERATIONS**

Are you aware of any of the following conditions, either past or present, on the site?		Response	
Condition		Yes	No
1. Stored Chemicals		<input type="checkbox"/>	<input checked="" type="checkbox"/>
2. Underground Storage Tanks		<input type="checkbox"/>	<input checked="" type="checkbox"/>
3. Aboveground Storage Tanks		<input type="checkbox"/>	<input checked="" type="checkbox"/>
4. Spills or Releases		<input type="checkbox"/>	<input checked="" type="checkbox"/>
5. Dump Areas/Landfills		<input type="checkbox"/>	<input checked="" type="checkbox"/>
6. Waste Treatment Systems		<input type="checkbox"/>	<input checked="" type="checkbox"/>
7. Clarifiers/Separators		<input type="checkbox"/>	<input checked="" type="checkbox"/>
8. Air stacks/Vents/Odors		<input type="checkbox"/>	<input checked="" type="checkbox"/>
9. Floor Drains/Sumps		<input type="checkbox"/>	<input checked="" type="checkbox"/>
10. Stained Soil/ Impacted Vegetation		<input type="checkbox"/>	<input checked="" type="checkbox"/>
11. On-site OWNED Electrical Transformers		<input type="checkbox"/>	<input checked="" type="checkbox"/>
12. Hydraulic lifts/ Elevators		<input type="checkbox"/>	<input checked="" type="checkbox"/>
13. Dry Cleaning Operations		<input type="checkbox"/>	<input checked="" type="checkbox"/>
14. Wetlands/ Flooding		<input type="checkbox"/>	<input checked="" type="checkbox"/>
15. Oil/ Gas/ Water/ Monitoring Wells		<input type="checkbox"/>	<input checked="" type="checkbox"/>
16. Environmental Cleanups		<input type="checkbox"/>	<input checked="" type="checkbox"/>
17. Environmental Permits		<input type="checkbox"/>	<input checked="" type="checkbox"/>
a) Industrial Discharge		<input type="checkbox"/>	<input checked="" type="checkbox"/>
b) POTW (NPDES)		<input type="checkbox"/>	<input checked="" type="checkbox"/>
c) Hazardous Waste Generator		<input type="checkbox"/>	<input checked="" type="checkbox"/>
d) Air Quality		<input type="checkbox"/>	<input checked="" type="checkbox"/>
e) Flammable Materials		<input type="checkbox"/>	<input checked="" type="checkbox"/>
f) AST/UST		<input type="checkbox"/>	<input checked="" type="checkbox"/>
g) Waste Manifest(s)		<input type="checkbox"/>	<input checked="" type="checkbox"/>
h) other		<input type="checkbox"/>	<input checked="" type="checkbox"/>

**HISTORICAL RESEARCH DOCUMENTATION**

**APPENDIX C**





**Miki Basin - 200 Acre Industrial Site**  
Miki Road & Kaunalapau Highway  
Lanai City, HI 96763

Inquiry Number: 3875991.8  
March 12, 2014

## The EDR Aerial Photo Decade Package

## EDR Aerial Photo Decade Package

Environmental Data Resources, Inc. (EDR) Aerial Photo Decade Package is a screening tool designed to assist environmental professionals in evaluating potential liability on a target property resulting from past activities. EDR's professional researchers provide digitally reproduced historical aerial photographs, and when available, provide one photo per decade.

When delivered electronically by EDR, the aerial photo images included with this report are for **ONE TIME USE ONLY**. Further reproduction of these aerial photo images is prohibited without permission from EDR. For more information contact your EDR Account Executive.

*Thank you for your business.*  
Please contact EDR at 1-800-352-0050  
with any questions or comments.

### Disclaimer - Copyright and Trademark Notice

The Report contains certain information obtained from a variety of public and other sources reasonably available to Environmental Data Resources, Inc. It cannot be concluded from this Report that coverage information for the target and surrounding properties does not exist from other sources. **NO WARRANTY EXPRESSED OR IMPLIED, IS MADE WHATSOEVER IN CONNECTION WITH THIS REPORT. ENVIRONMENTAL DATA RESOURCES, INC. SPECIFICALLY DISCLAIMS THE MAKING OF ANY SUCH WARRANTIES, INCLUDING WITHOUT LIMITATION, THAT THE INFORMATION CONTAINED HEREIN IS ACCURATE, COMPLETE, CURRENT, OR UP TO DATE. ENVIRONMENTAL DATA RESOURCES, INC. SHALL NOT BE LIABLE TO ANYONE UNDER ANY THEORY OF LIABILITY, INCLUDING NEGLIGENCE, ACCIDENT OR ANY OTHER CAUSE, FOR ANY LOSS OF DAMAGE, INCLUDING WITHOUT LIMITATION, SPECIAL, INCIDENTAL, CONSEQUENTIAL, OR EXEMPLARY DAMAGES, ANY LIABILITY ON THE PART OF ENVIRONMENTAL DATA RESOURCES, INC. IS STRICTLY LIMITED TO A REFUND OF THE AMOUNT PAID FOR THIS REPORT.** Purchaser accepts this Report AS IS. Any analyses, estimates, ratings, environmental risk levels or risk codes provided in this Report are provided for illustrative purposes only, and are not intended to provide, nor should they be interpreted as providing any facts regarding, or prediction or forecast of, any environmental risk for any property. Only a Phase I Environmental Site Assessment performed by an environmental professional can provide information regarding the environmental risk for any property. Additionally, the information provided in this Report is not to be construed as legal advice.

Copyright 2014 by Environmental Data Resources, Inc. All rights reserved. Reproduction in any media or format, in whole or in part, of any report or map of Environmental Data Resources, Inc., or its affiliates, is prohibited without prior written permission.

EDR and its logos (including Sanborn and Sanborn Map) are trademarks of Environmental Data Resources, Inc. or its affiliates. All other trademarks used herein are the property of their respective owners.



6 Armstrong Road, 4th Floor  
Shelton, Connecticut 06484  
Toll Free: 800.352.0050  
[www.edrnet.com](http://www.edrnet.com)

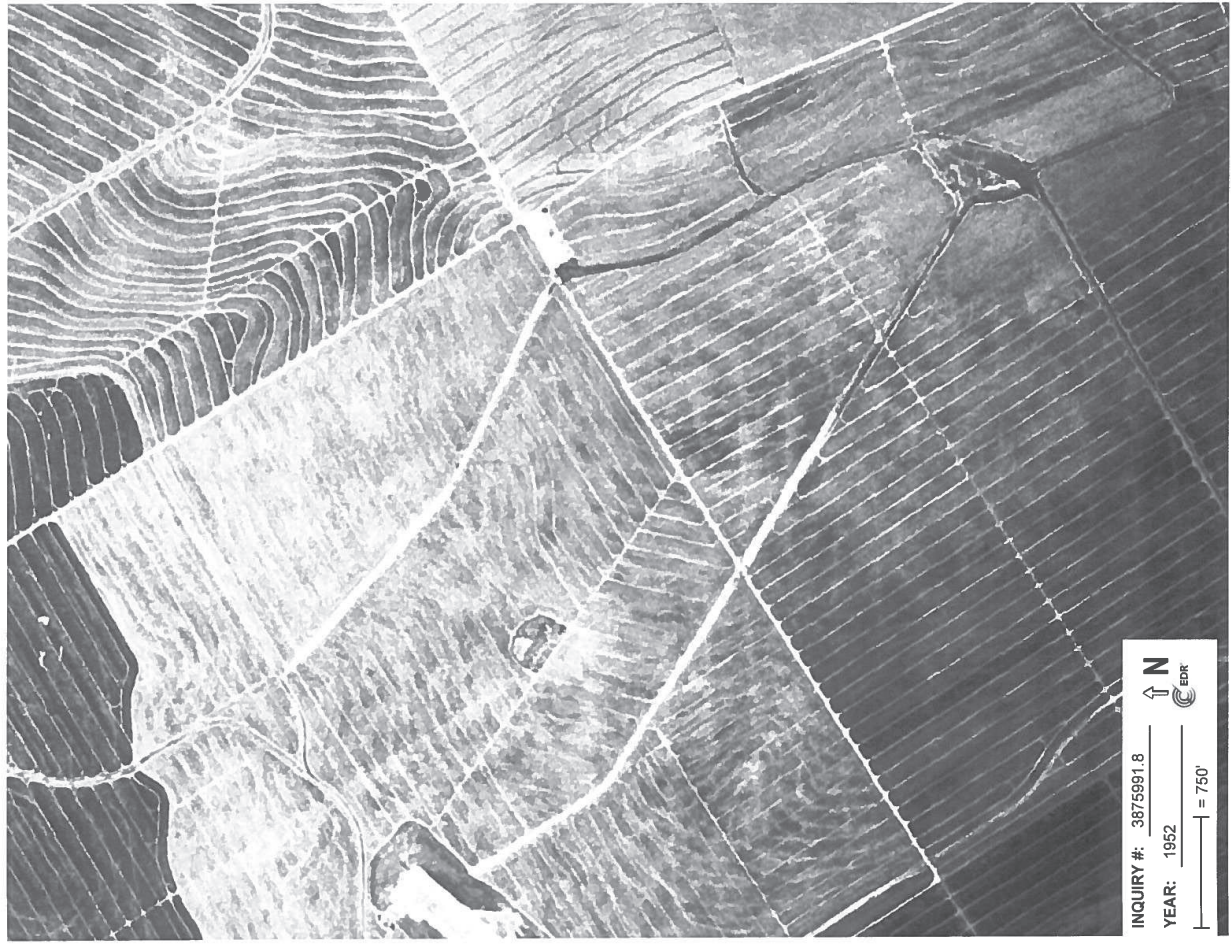
**Date EDR Searched Historical Sources:**

Aerial Photography March 12, 2014

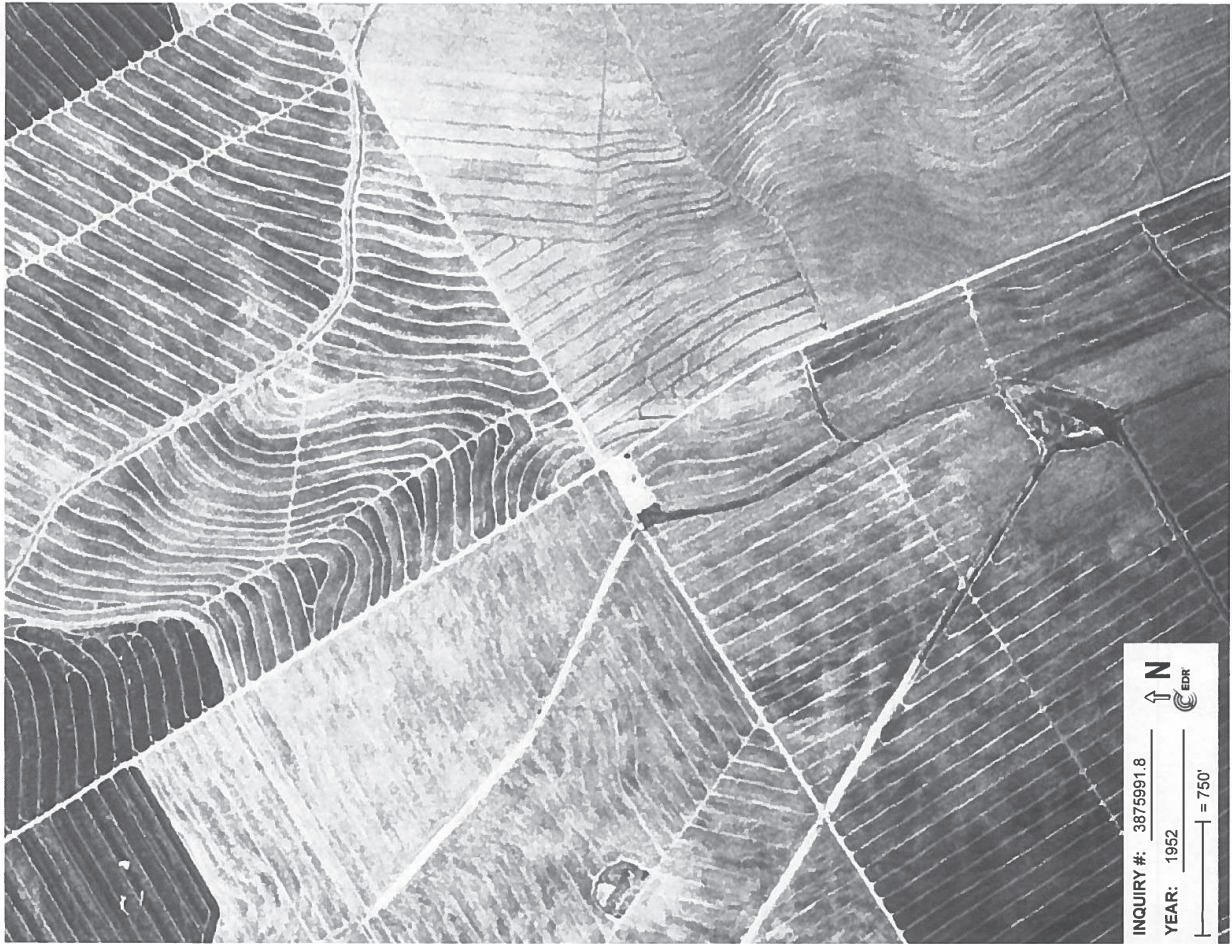
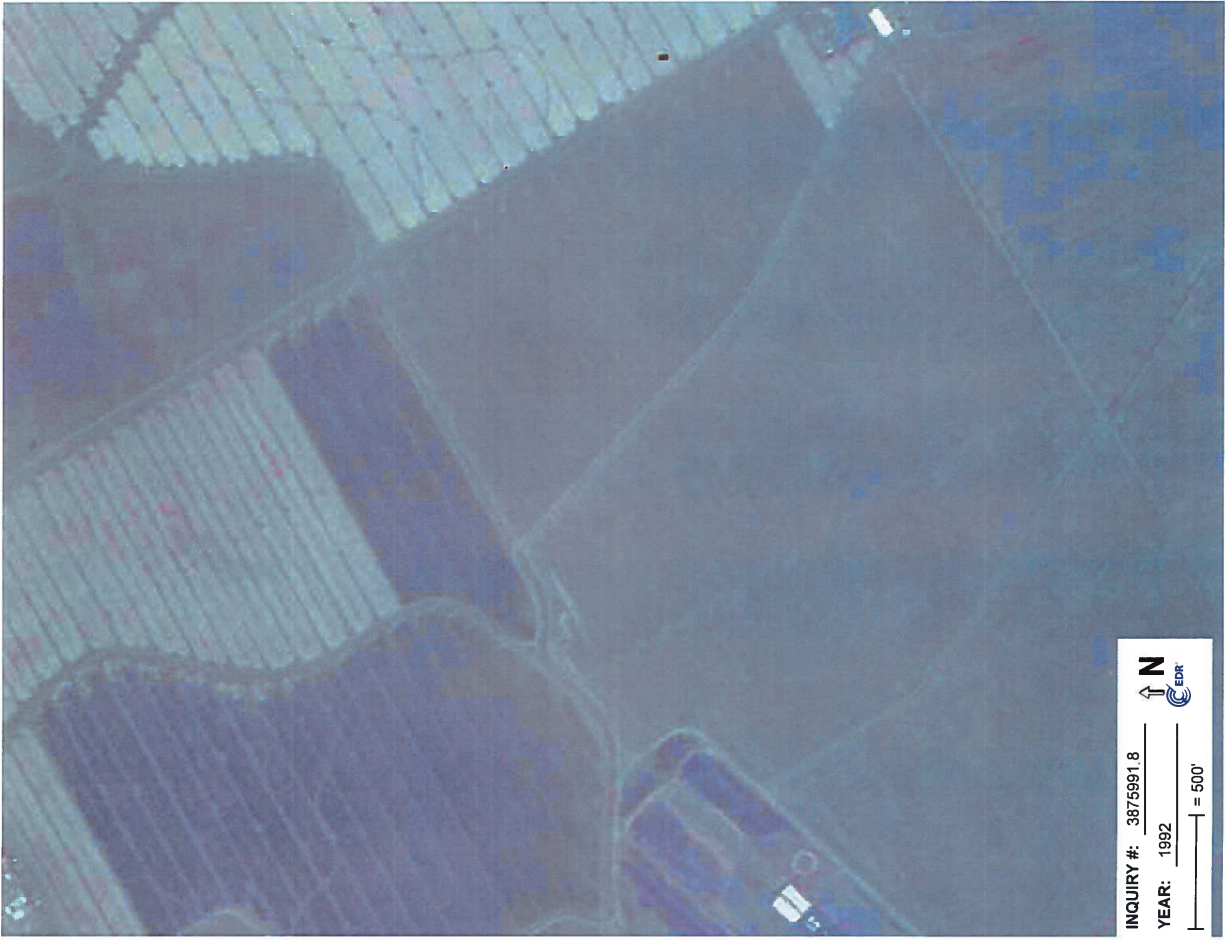
**Target Property:**

Miki Road & Kaunaloa Highway  
Lanai City, HI 96763

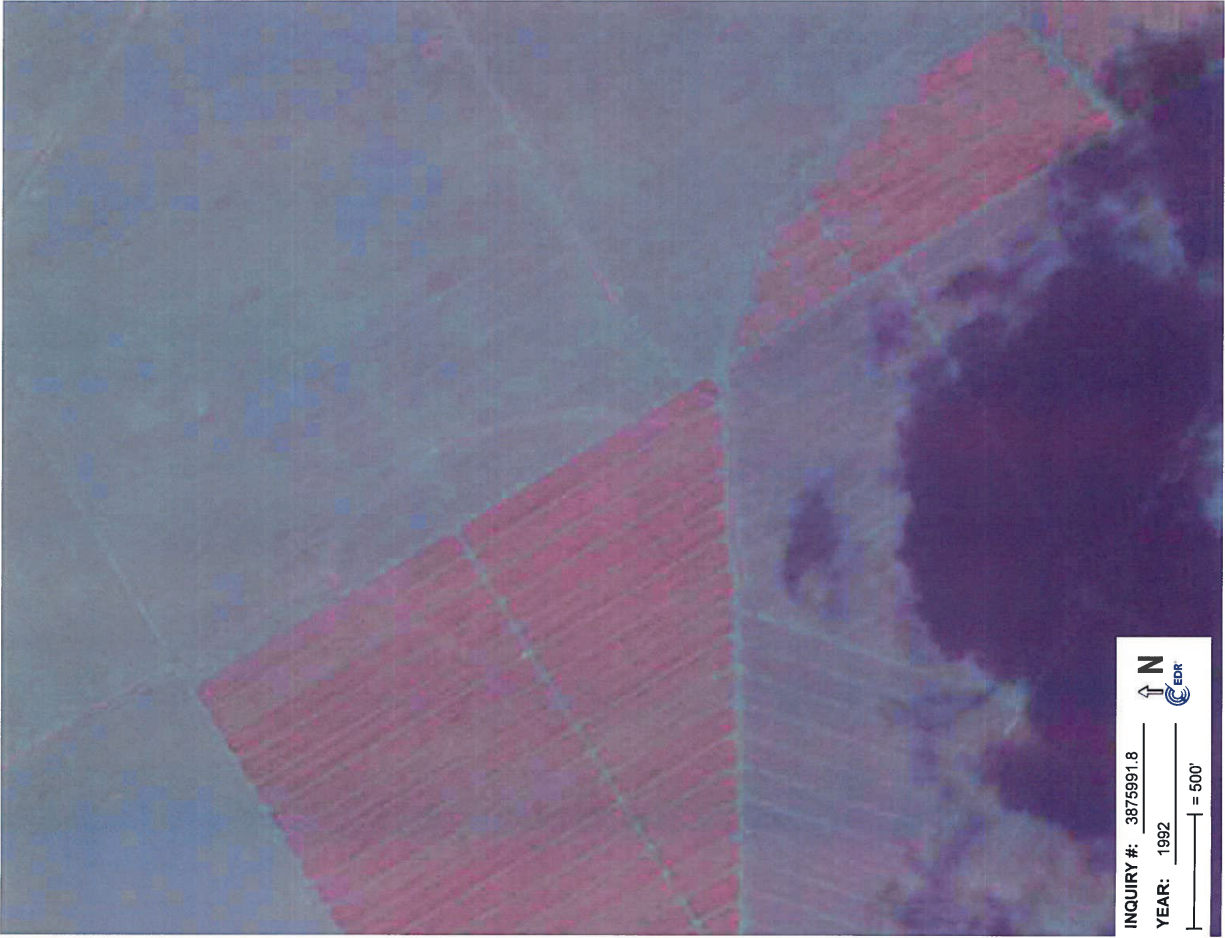
<u>Year</u>	<u>Scale</u>	<u>Details</u>	<u>Source</u>
1952	Aerial Photograph Scale: 1"=750'	Panel # 20156-G8, ISLAND OF LANAI OE NW, HI/Flight Date January 26, 1952	EDR
1952	Aerial Photograph Scale: 1"=750'	Panel # 20156-G8, ISLAND OF LANAI OE NW, HI/Flight Date January 26, 1952	EDR
1992	Aerial Photograph Scale: 1"=500'	Panel # 20156-G8, ISLAND OF LANAI OE NW, HI/Flight Date September 23, 1992	EDR
1992	Aerial Photograph Scale: 1"=500'	Panel # 20156-G8, ISLAND OF LANAI OE NW, HI/Flight Date September 23, 1992	EDR
1992	Aerial Photograph Scale: 1"=500'	Panel # 20156-G8, ISLAND OF LANAI OE NW, HI/Flight Date September 23, 1992	EDR
1992	Aerial Photograph Scale: 1"=500'	Panel # 20156-G8, ISLAND OF LANAI OE NW, HI/Flight Date September 23, 1992	EDR
1992	Aerial Photograph Scale: 1"=500'	Panel # 20156-G8, ISLAND OF LANAI OE NW, HI/Flight Date September 23, 1992	EDR
1992	Aerial Photograph Scale: 1"=500'	Panel # 20156-G8, ISLAND OF LANAI OE NW, HI/Flight Date September 23, 1992	EDR



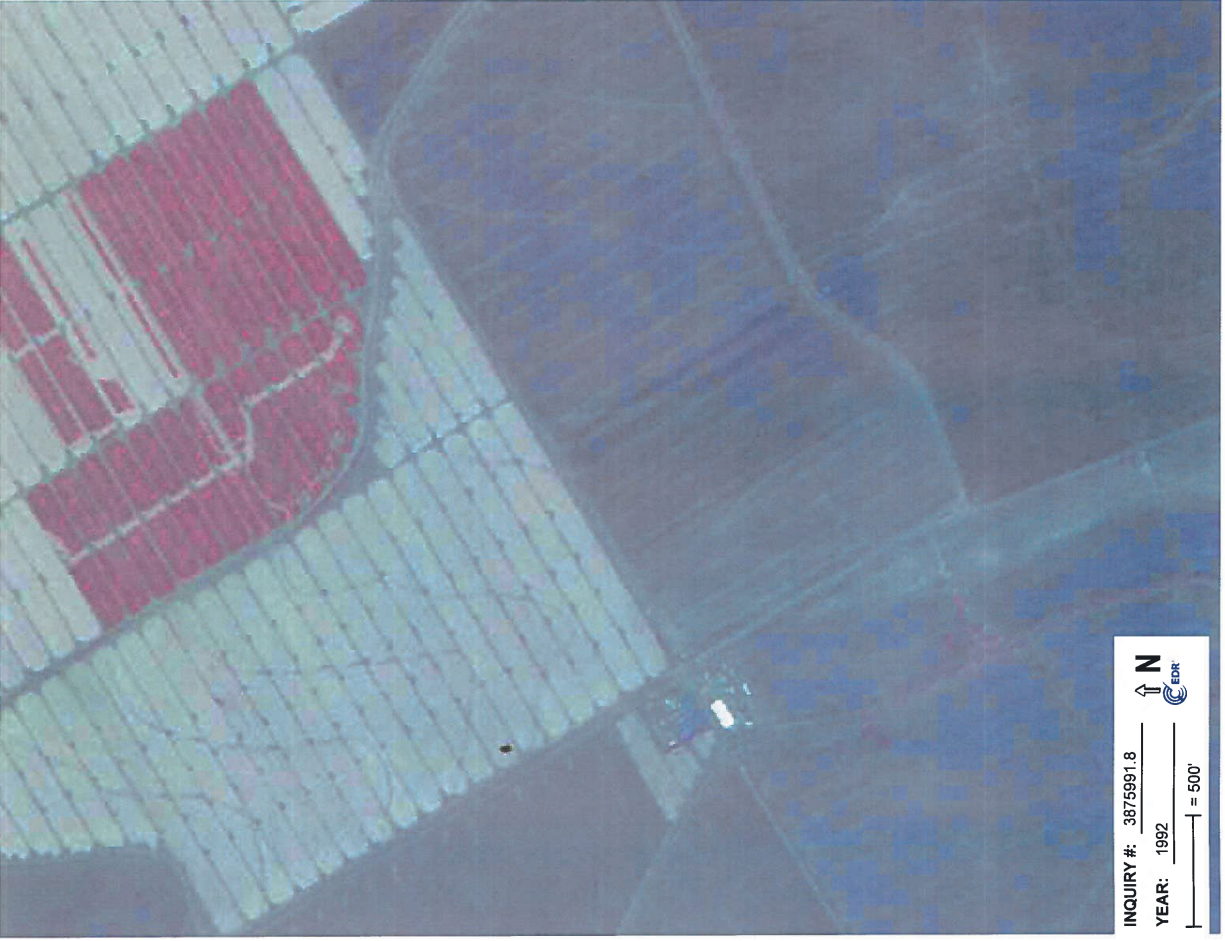




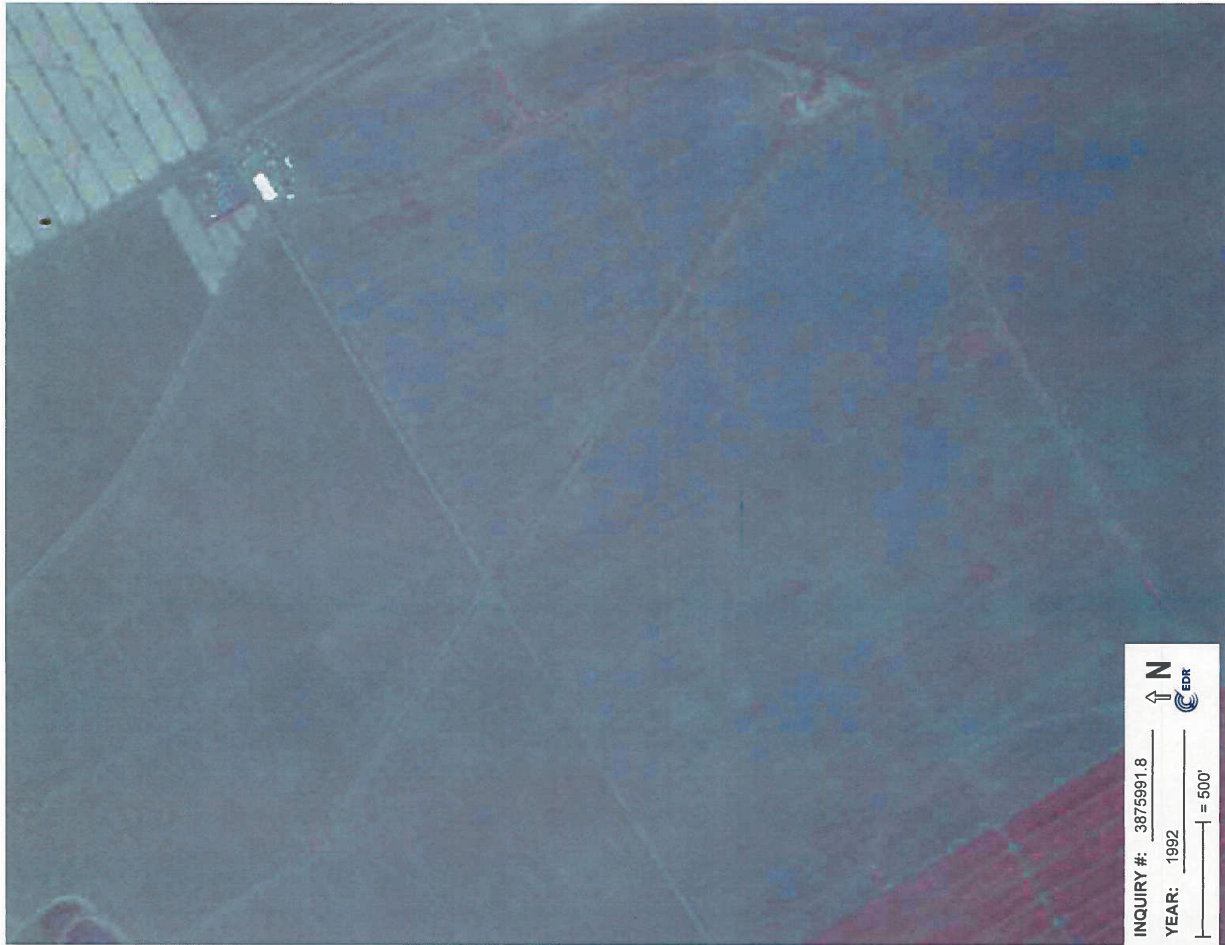








INQUIRY #: 3875991.8  
YEAR: 1992  
↑ N  
EDR  
= 500'



INQUIRY #: 3875991.8  
YEAR: 1992  
↑ N  
EDR  
= 500'

**Miki Basin - 200 Acre Industrial Site**  
Miki Road & Kaumalapau Highway  
Lanai City, HI 96763

Inquiry Number: 3875991.4  
March 10, 2014

## EDR Historical Topographic Map Report

## EDR Historical Topographic Map Report

Environmental Data Resources, Inc.'s (EDR) Historical Topographic Map Report is designed to assist professionals in evaluating potential liability on a target property resulting from past activities. EDR's Historical Topographic Map Report includes a search of a collection of public and private color historical topographic maps, dating back to the early 1900s

*Thank you for your business.*  
Please contact EDR at 1-800-352-0050  
with any questions or comments.

### Disclaimer - Copyright and Trademark Notice

This Report contains certain information obtained from a variety of public and other sources reasonably available to Environmental Data Resources, Inc. It cannot be concluded from this Report that coverage information for the target and surrounding properties does not exist from other sources. **NO WARRANTY EXPRESSED OR IMPLIED, IS MADE WHATSOEVER IN CONNECTION WITH THIS REPORT. ENVIRONMENTAL DATA RESOURCES, INC. SPECIFICALLY DISCLAIMS THE MAKING OF ANY SUCH WARRANTIES, INCLUDING WITHOUT LIMITATION, MERCHANTABILITY OR FITNESS FOR A PARTICULAR USE OR PURPOSE. ALL RISK IS ASSUMED BY THE USER. IN NO EVENT SHALL ENVIRONMENTAL DATA RESOURCES, INC. BE LIABLE TO ANYONE, WHETHER ARISING OUT OF ERRORS OR OMISSIONS, NEGLIGENCE, ACCIDENT OR ANY OTHER CAUSE, FOR ANY LOSS OF DAMAGE, INCLUDING, WITHOUT LIMITATION, SPECIAL, INCIDENTAL, CONSEQUENTIAL, OR EXEMPLARY DAMAGES. ANY LIABILITY ON THE PART OF ENVIRONMENTAL DATA RESOURCES, INC. IS STRICTLY LIMITED TO A REFUND OF THE AMOUNT PAID FOR THIS REPORT. Purchaser accepts this Report AS IS. Any analyses, estimates, ratings, environmental risk levels or risk codes provided in this Report are provided for illustrative purposes only, and are not intended to provide, nor should they be construed to provide, any legal, regulatory, or other professional advice. EDR does not assume any environmental risk for any property. Only a Phase I Environmental Assessment performed by an environmental professional can provide the information regarding the environmental risk for any property. Additionally, the information provided in this Report is not to be construed as legal advice.**

Copyright 2014 by Environmental Data Resources, Inc. All rights reserved. Reproduction in any media or format, in whole or in part, of any report or map of Environmental Data Resources, Inc., or its affiliates, is prohibited without prior written permission.

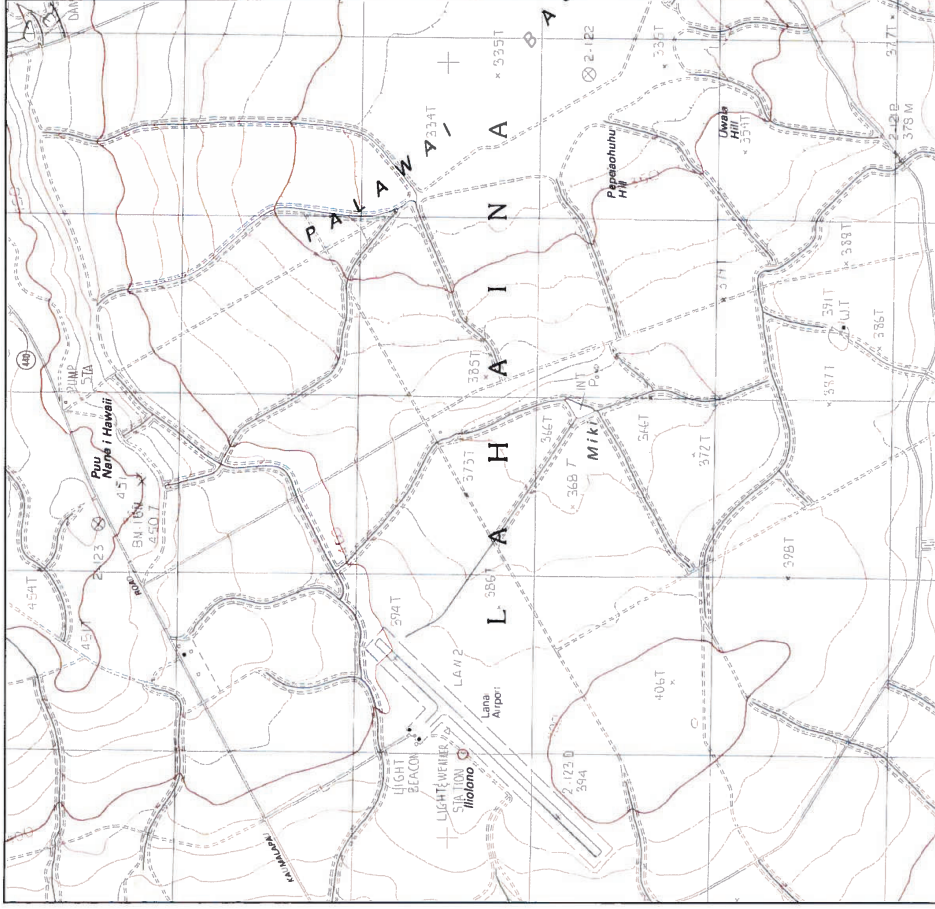
EDR and its logos (including Sanborn and Sanborn Map) are trademarks of Environmental Data Resources, Inc. or its affiliates. All other trademarks used herein are the property of their respective owners.

6 Armstrong Road, 4th Floor  
Shelton, Connecticut 06484  
Toll Free: 800.352.0050  
[www.edrnet.com](http://www.edrnet.com)





Historical Topographic Map



<p>N ↑</p>	<p>TARGET QUAD NAME: LANAI SOUTH MAP YEAR: 1984 PROVISIONAL SERIES: 7.5 SCALE: 1:25000</p>	<p>SITE NAME: Miki Basin - 200 Acre Industrial Site ADDRESS: Miki Road &amp; Kaunalaupau Highway LAT/LONG: 20.7904 / -156.9375</p>	<p>CLIENT: TRC CONTACT: Ron Landolt INQUIRY#: 3875991.4 RESEARCH DATE: 03/10/2014</p>
------------	--	--	---

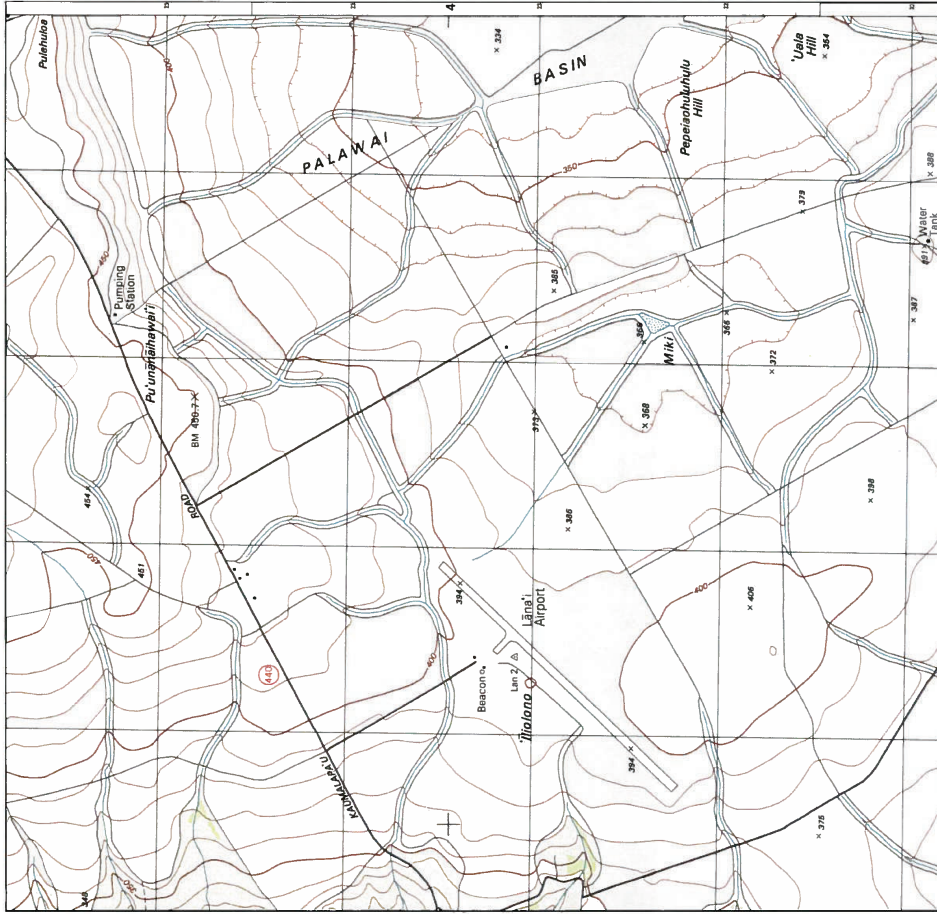
Historical Topographic Map



<p>N ↑</p>	<p>TARGET QUAD NAME: LANAI MAP YEAR: 1984 SERIES: 15 SCALE: 1:50000</p>	<p>SITE NAME: Miki Basin - 200 Acre Industrial Site ADDRESS: Miki Road &amp; Kaunalaupau Highway LAT/LONG: 20.7904 / -156.9375</p>	<p>CLIENT: TRC CONTACT: Ron Landolt INQUIRY#: 3875991.4 RESEARCH DATE: 03/10/2014</p>
------------	---	--	---



Historical Topographic Map



**Miki Basin - 200 Acre Industrial Site**  
 Miki Road & Kaunalapau Highway  
 Lanai City, HI 96763

Inquiry Number: 3875991.5  
 March 11, 2014

The EDR-City Directory Image Report

<p>N ↑</p>		<p>TARGET QUAD                  NAME: LANAI CITY                  MAP YEAR: 1992                  SERIES: 7.5                  SCALE: 1:24000</p>	<p>SITE NAME: Miki Basin - 200 Acre Industrial Site                  ADDRESS: Miki Road &amp; Kaunalapau Highway                  Lanai City, HI 96763                  LAT/LONG: 20.7904 / -156.9375</p>	<p>CLIENT: TRC                  CONTACT: Ron Landolt                  INQUIRY#: 3875991.4                  RESEARCH DATE: 03/10/2014</p>
------------	--	---	---	--

6 Armstrong Road  
 Shelton, CT 06484  
 800.352.0050  
 www.edrnet.com



## TABLE OF CONTENTS

### SECTION

Executive Summary

Findings

City Directory Images

## EXECUTIVE SUMMARY

### DESCRIPTION

Environmental Data Resources, Inc.'s (EDR) City Directory Report is a screening tool designed to assist environmental professionals in evaluating potential liability on a target property resulting from past activities. EDR's City Directory Report includes a search of available city directory data at 5 year intervals.

### RESEARCH SUMMARY

The following research sources were consulted in the preparation of this report. A check mark indicates where information was identified in the source and provided in this report.

Year	Target Street	Cross Street	Source
2013	<input checked="" type="checkbox"/>	<input type="checkbox"/>	Cole Information Services
2008	<input type="checkbox"/>	<input type="checkbox"/>	Cole Information Services
2003	<input type="checkbox"/>	<input type="checkbox"/>	Cole Information Services
1999	<input checked="" type="checkbox"/>	<input type="checkbox"/>	Cole Information Services
1987	<input checked="" type="checkbox"/>	<input type="checkbox"/>	Polk's City Directory

### RECORD SOURCES

EDR is licensed to reproduce certain City Directory works by the copyright holders of those works. The purchaser of this EDR City Directory Report may include it in report(s) delivered to a customer. Reproduction of City Directories without permission of the publisher or licensed vendor may be a violation of copyright.

*Thank you for your business.*  
Please contact EDR at 1-800-352-0050  
with any questions or comments.

#### Disclaimer - Copyright and Trademark Notice

This Report contains certain information obtained from a variety of public and other sources reasonably available to Environmental Data Resources, Inc. It cannot be concluded from this Report that coverage information for the target and surrounding properties does not exist from other sources. **NO WARRANTY EXPRESSED OR IMPLIED, IS MADE WHATSOEVER IN CONNECTION WITH THIS REPORT. ENVIRONMENTAL DATA RESOURCES, INC. SPECIFICALLY DISCLAIMS THE MAKING OF ANY SUCH WARRANTIES, INCLUDING WITHOUT LIMITATION, MERCHANTABILITY OR FITNESS FOR A PARTICULAR USE OR PURPOSE. ALL RISK IS ASSUMED BY THE USER. IN NO EVENT SHALL ENVIRONMENTAL DATA RESOURCES, INC. BE LIABLE TO ANYONE, WHETHER ARISING OUT OF ERRORS OR OMISSIONS, NEGLIGENCE, ACCIDENT OR ANY OTHER CAUSE, FOR ANY LOSS OR DAMAGE, INCLUDING, WITHOUT LIMITATION, SPECIAL, INCIDENTAL, CONSEQUENTIAL, OR EXEMPLARY DAMAGES. ANY LIABILITY ON THE PART OF ENVIRONMENTAL DATA RESOURCES, INC. IS STRICTLY LIMITED TO A REFUND OF THE AMOUNT PAID FOR THIS REPORT.** Purchaser accepts this Report "AS IS". Any analyses, estimates, ratings, environmental risk levels or risk codes provided in this Report are provided for illustrative purposes only, and are not intended to provide, nor should they be interpreted, as providing any advice regarding, or prediction or forecast of, any environmental risk for any property, or any other environmental risk. Environmental Data Resources, Inc. does not warrant, represent or make any representation, or provide any environmental information regarding the environmental risk for any property. Additionally, the information provided in this Report is not to be construed as legal advice.

Copyright 2013 by Environmental Data Resources, Inc. All rights reserved. Reproduction in any media or format, in whole or in part, of any report or map of Environmental Data Resources, Inc. or its affiliates is prohibited without prior written permission. EDR and its logos (including Sanborn and Sanborn Map) are trademarks of Environmental Data Resources, Inc. or its affiliates. All other trademarks used herein are the property of their respective owners.

**FINDINGS**

**TARGET PROPERTY STREET**

Miki Road & Kaunalapau Highway  
Lanai City, HI 96763

<i>Year</i>	<i>CD Image</i>	<i>Source</i>	
<b>KAUNALAPAU HWY</b>			
2013	pg A1	Cole Information Services	
2008	-	Cole Information Services	Target and Adjoining not listed in Source
2003	-	Cole Information Services	Target and Adjoining not listed in Source
1999	pg A2	Cole Information Services	
1997	pg A3	Polk's City Directory	
<b>MIKIRD</b>			
2013	-	Cole Information Services	Street not listed in Source
2008	-	Cole Information Services	Street not listed in Source
2003	-	Cole Information Services	Street not listed in Source
1999	-	Cole Information Services	Street not listed in Source
1997	-	Polk's City Directory	Street not listed in Source

**FINDINGS**

**CROSS STREETS**

No Cross Streets Identified