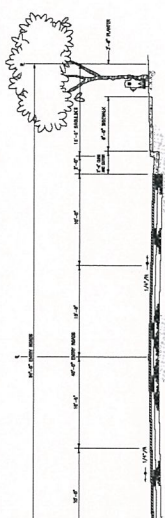
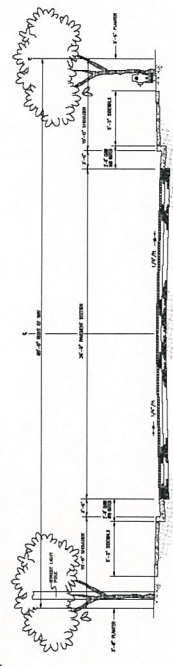


TYPICAL ROADWAY SECTION - EAST KAONOULU STREET
SCALE: 3/16"=1'-0"

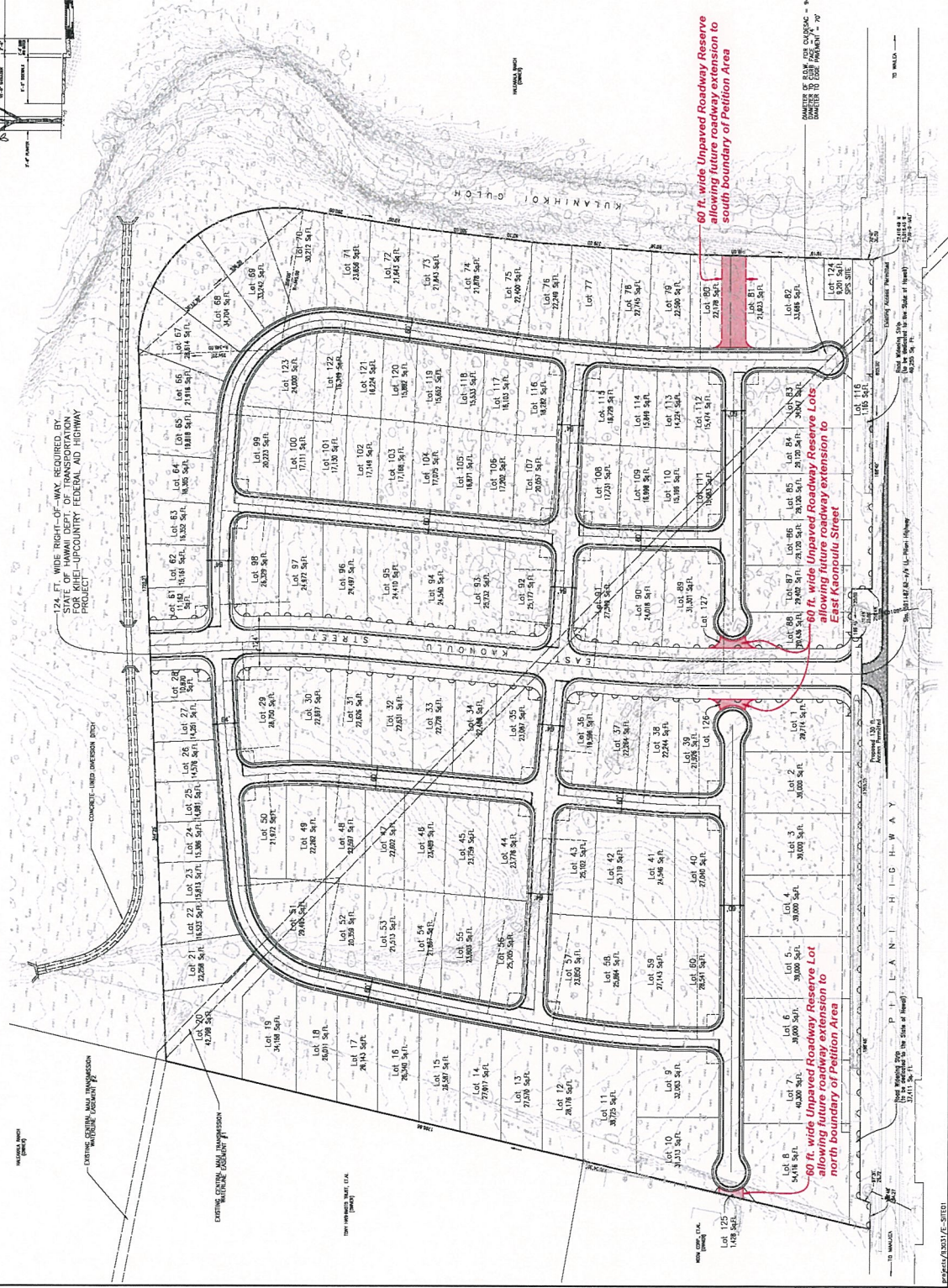


TYPICAL ROADWAY SECTION - MAIN ENTRY ROADS
SCALE: 3/16"=1'-0"



TYPICAL ROADWAY SECTION - INTERNAL ROADS
SCALE: 3/16"=1'-0"

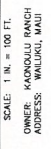
17.4 FT. WIDE DRIVEWAY REQUIRED BY STATE OF HAWAII DEPT. OF TRANSPORTATION FOR KIHEI-UPCOUNTRY FEDERAL AID HIGHWAY PROJECT



CONCEPTUAL DEVELOPMENT PLAN
KAONOULU INDUSTRIAL PARK

T.M.K. 3-9-01:16 AND
T.M.K. 2-2-02:PORTION OF 15
KIHEI, MAUI, HAWAII

OWNER: KAONOULU RANCH
ADDRESS: WAILUKU, MAUI



- LEGEND
- ROAD, IMPROVEMENT CENTER
 - PAVED ROAD
 - UNPAVED ROAD
 - EXIST. ELEVATION
 - PROPOSED ELEVATION
 - EXPANSION CORNER
 - MANHOLE
 - POWER POLE
 - DRAIN
 - IN CONTROL

NOTES:

60 ft. wide Unpaved Roadway Reserve allowing expansion to south boundary of Petition Area

60 ft. wide Unpaved Roadway Reserve Lots allowing future roadway extension to East Kaonolu Street

60 ft. wide Unpaved Roadway Reserve Lot allowing expansion to north boundary of Petition Area

QUANTITY OF S.D.M. FOR C.A.S.A.C. = 84
QUANTITY TO BE ORDERED = 70

