

STATE HISTORIC PRESERVATION DIVISION

PRELIMINARY SITE INFORMATION FORM
FOR REQUESTING HAWAII STATE INVENTORY OF HISTORIC PLACES (SIHP)
NUMBERS

(revised 3/6/2017)

Instructions: Submit this completed *.doc* with attached USGS map, TMK map (with site location(s) plotted on both) and site Plan(s). In addition, please fill out the *.xls* site data form and include with submission. Email the request to your island's SHPD.

Total SIHP #'s being requested: 1

Date: 10/08/2018

Firm/Agency: ASM Affiliates, Inc.

PI: Matthew Clark, M.A.

Project Name: Waikōloa Highlands Site 22 CS

Island: Hawai'i

Ahupua'a: Waikōloa

District: South Kohala

Project Area size (acreage): 1 acre

TMK(s): (3) 6-8-002:016

Owner/Developer: Waikoloa Highlands Inc.

Address: 1200 S Brand BLVD #202, Glendale, CA 91204-2641

Site Description: include (attach) a description of each historic property that will be designated by a site number. Include individual descriptions of features and/or components of the site, measurements, etc., and any other relevant information gathered to date.

Site T-22

Site T-22 is a complex comprising two bi-faced and core-filled walls. It is located roughly 400 meters north of the summit of Pu'u Hīna'i and along the southern side of the 'Auwaiakeakua Gulch near the the southern boundary of TMK (3) 6-8-002:016 (Figures 1 and 2).

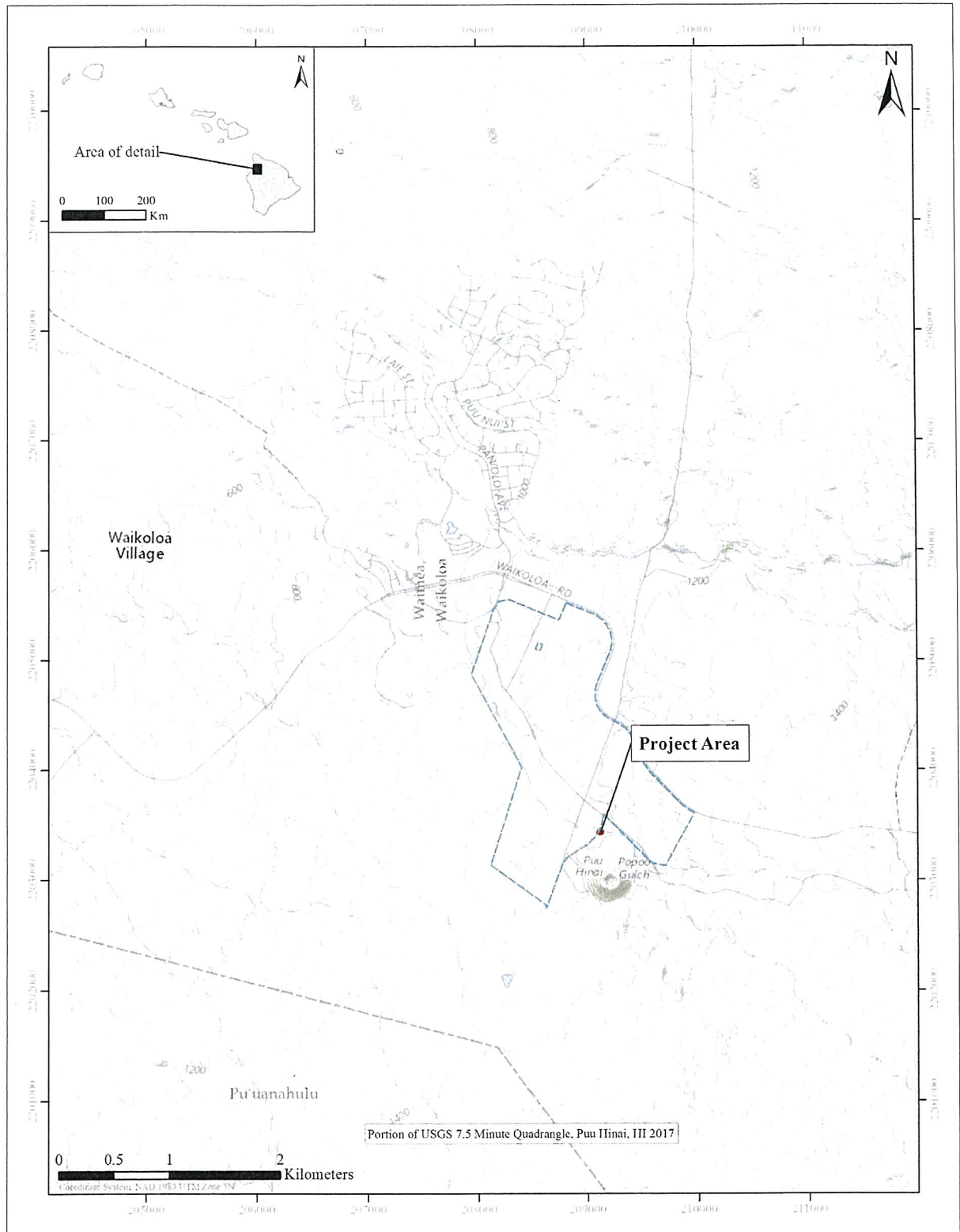
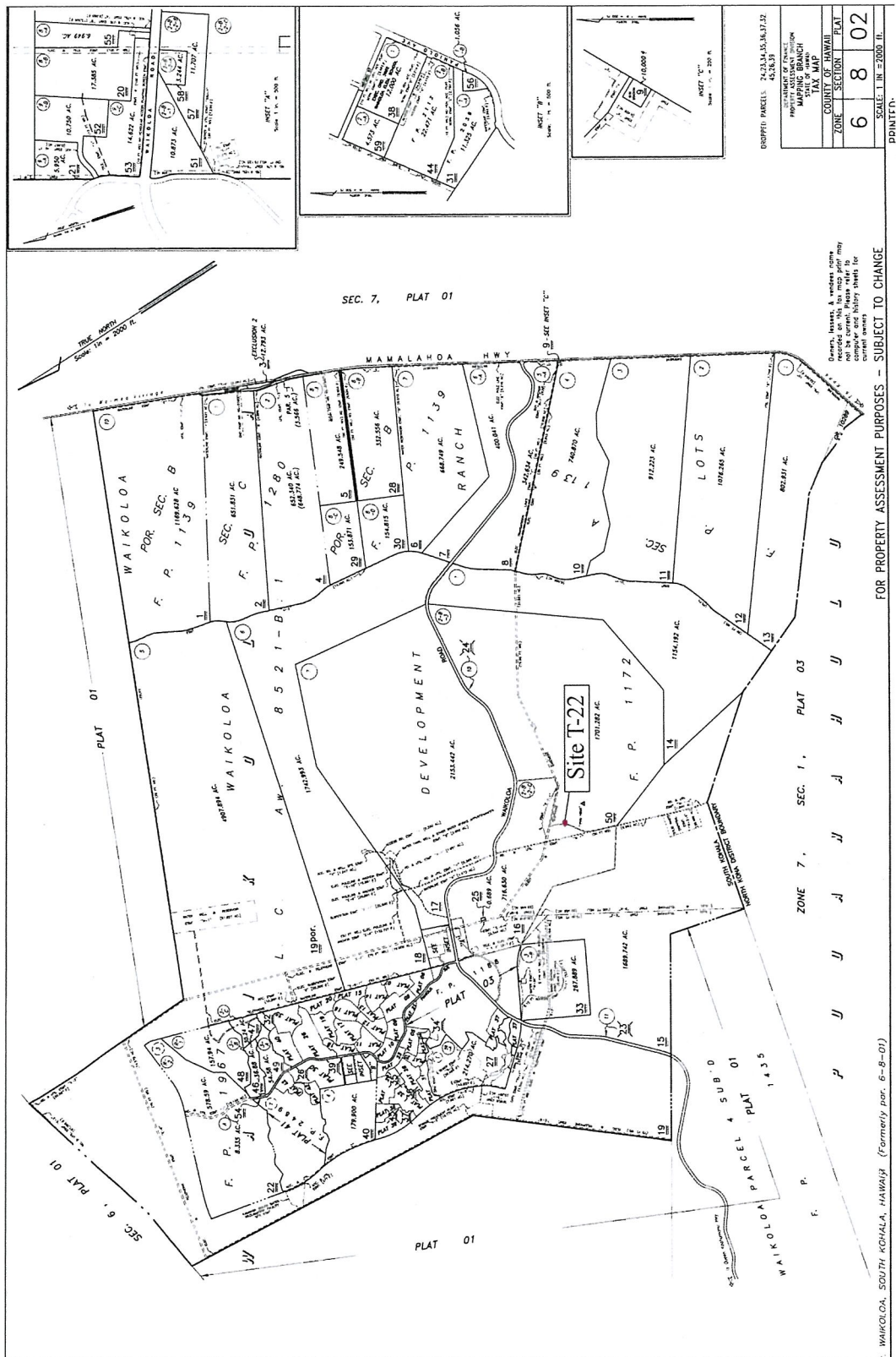


Figure 1. Location of Site 22 project area, enclosing TMK parcel outlined in blue.



On August 8, 2018, ASM fieldworkers revisited and documented Site 22 (Figure 3). The wall complex consists of two features: a north/south extending wall (Feature 22A) and an east/west extending wall (Feature 22B). The terrain surrounding the terrace is characterized by arid and undulating grasslands. The ground surfaces adjacent to the two walls that make up Site 22 is relatively level with a slight slope to the west.

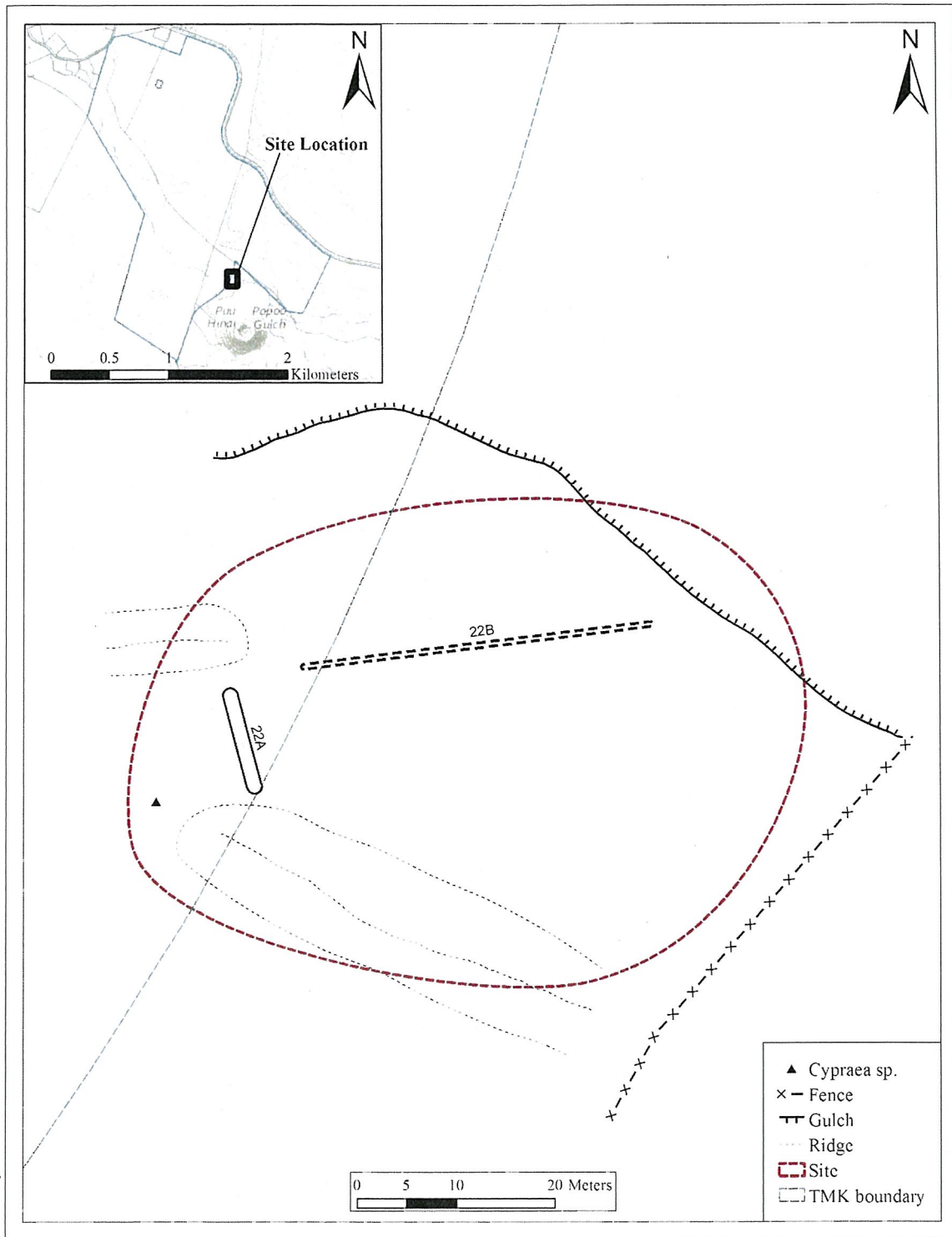


Figure 3. Site T-22 plan view.

Feature A

Feature A (labeled “22A” in Figure 3) is a bi-faced core-filled wall (Figure 4) that is constructed of angular basaltic boulders and cobbles. This wall defines Site 22’s western edge. It measures 10 meters long (north/south) by 1.5 meters wide and ranges between 0.3 to 0.5 meters tall along its eastern edge. The northern end of Feature 22A is noted to have been constructed purposefully as the ending of the wall and is separated from an adjacent knoll by approximately 1.7 meters. Deposits of fine silt loam sand have accumulated along its eastern and western sides. About 10 meters west of Feature A, one *Cypraea* sp. shell was observed on the ground surface (see Figure 4).

Feature B

Feature B (labeled “22B” in Figure 3) is a bi-faced core-filled wall (Figure 5) that is constructed of angular basaltic boulders and cobbles. This wall defines the Site 22’s northern edge. It measures 50 meters long (east/west) by at least 60 centimeters wide and ranges between 0 to 20 centimeters tall and extends. The wall is partially covered by deposits of silty loam.



Figure 4. Site 22 Feature A, view to the south.



Figure 5. Site 22 Feature B, view to the southeast.

References Cited

- Bevacqua, R.
 1972 Archaeological Survey of Portions of Waikoloa, South Kohala District, Island of Hawaii. *Departmental Report Series 72-4*. Department of Anthropology, B. P. Bishop Museum, Honolulu.
- Hammatt, H., and D. Shideler
 2006 Evalutaion of Archaeological Potential at a 702.28-Acre Parcel at Waikoloa, South Kohala District, Hawai'i Island, TMK: [3] 6-8-002:016. Cultural Surveys Hawaii, Inc. Job Code: Waiko 3. Prepared for R.M. Towill Corporation.
- 2007 Addendum to an Archaeological Inventory Survey Waikoloa Mauka Lands, Land of Waikoloa, South Kohala District, Island of Hawai'i, TMK: [3] 6-8-002:016 por. Cultural Surveys Hawaii, Inc. Job Code: Waikoloa 1. Prepared for R.M. Towill Corporation.
- Jensen, P.
 1990 Archaeological Inventory Survey, Waikoloa Mauka Lands, Land of Waikoloa, South Kohala District, Island of Hawaii. Paul H. Rosendahl, Ph.D., Inc. Report 717-0031090. Prepared for Transcontinental Developement Company, Honolulu, Hawai'i. Honolulu, Hawai'i.