

ORIGINAL

RECEIVED

SEP 13 2018

STATE OF HAWAII  
LAND USE COMMISSION

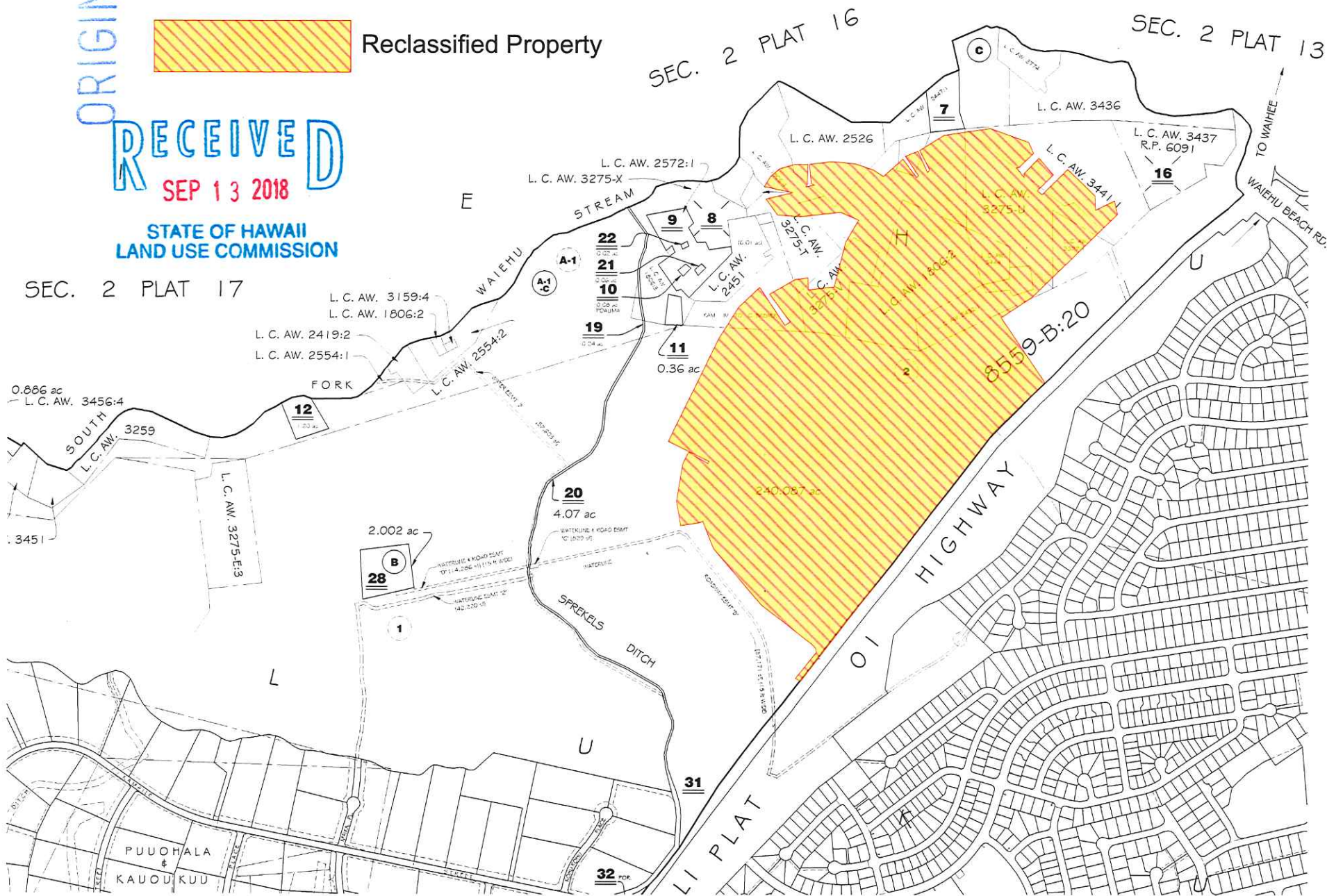


Reclassified Property

SEC. 2 PLAT 17

SEC. 2 PLAT 16

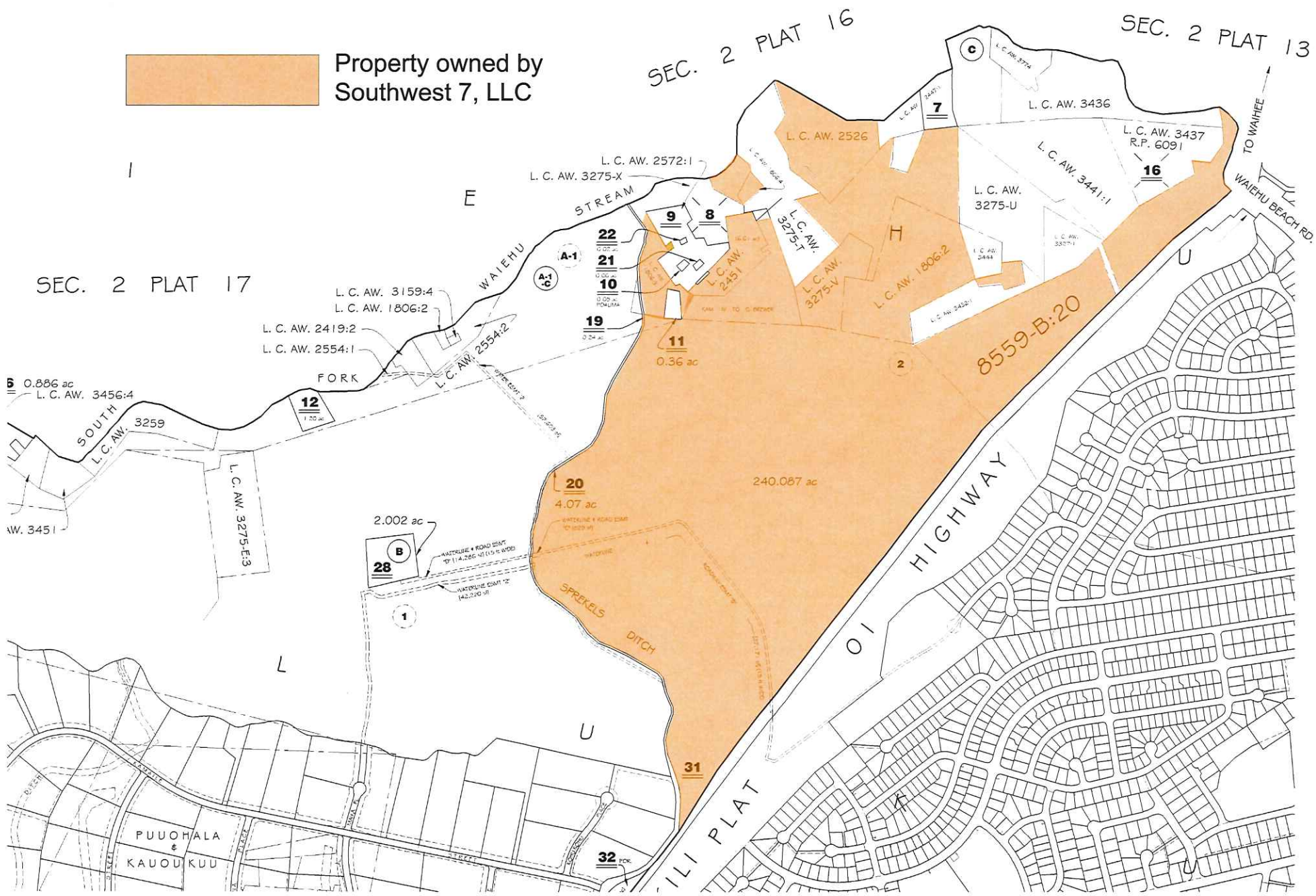
SEC. 2 PLAT 13







Property owned by Southwest 7, LLC



SEC. 2 PLAT 17

SEC. 2 PLAT 16

SEC. 2 PLAT 13

L. C. AW. 3159:4  
L. C. AW. 1806:2  
L. C. AW. 2419:2  
L. C. AW. 2554:1

0.886 ac  
L. C. AW. 3456:4

2.002 ac

L. C. AW. 2572:1  
L. C. AW. 3275-X

L. C. AW. 2526

L. C. AW. 3436

L. C. AW. 3437  
R.P. 6091

L. C. AW.  
3275-U

L. C. AW. 3441:1

22  
0.07 ac

21  
0.00 ac

10  
0.00 ac

19  
0.24 ac

11  
0.36 ac

20  
4.07 ac

240.087 ac

8559-B:20

OLI PLAT

HIGHWAY

TO WAIEHU  
WAIEHU BEACH RD.

PUUOHALA  
&  
KAOUUKUU

32  
ac

28

1

SPREKELS  
DITCH

U

L

E

WAIIEHU  
STREAM

FORK

SOUTH  
L.C. AW. 3259

L.C. AW. 3275-E:3

W. 3451

BLISS

WATER

WATER

WATER

WATER

WATER

WATER

WATER

WATER

WATER

WATER

WATER

WATER

WATER

WATER

WATER

WATER

WATER

WATER

WATER

WATER

WATER

WATER

WATER

WATER

WATER

WATER

WATER

WATER

WATER

WATER

WATER

WATER

WATER

WATER

WATER

WATER

WATER

WATER

WATER

WATER

WATER

WATER

WATER

WATER

WATER

WATER

WATER

WATER

WATER

WATER

WATER

WATER

WATER

WATER

WATER

WATER

WATER

WATER

WATER

WATER

WATER

WATER

WATER

WATER

WATER

WATER

WATER

WATER

WATER

WATER

WATER

WATER

WATER

WATER

WATER

WATER

WATER

WATER

WATER





