

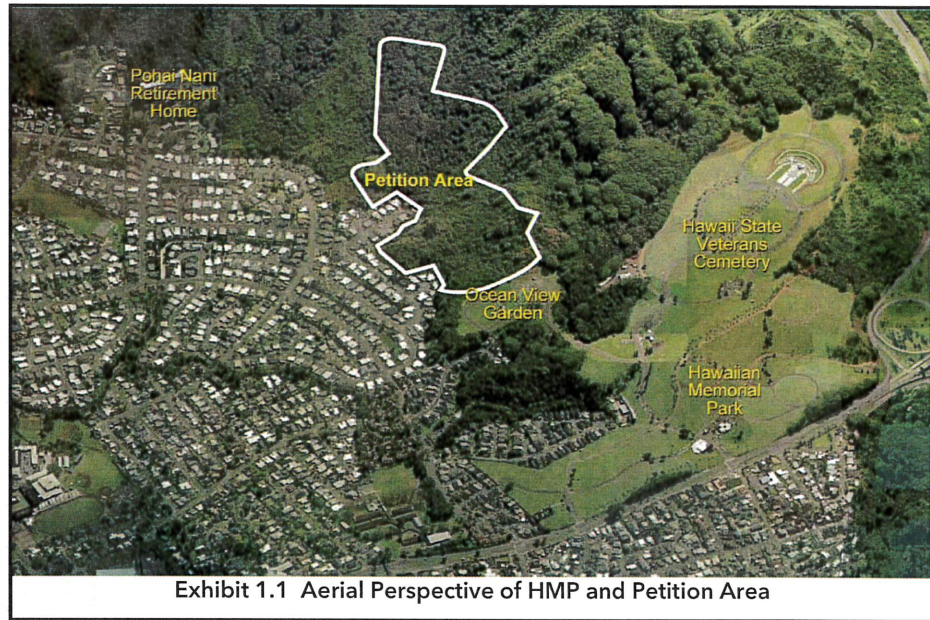


**Figure 1.2**

**Project Vicinity Map**  
 Hawaiian Memorial Park Cemetery Expansion Project  
 Kāneʻohe, Oʻahu, Hawaii



The entire HMP property is generally bounded by Kamehameha Highway to the northwest, or mauka (inland) side. Single-family residences associated with the Pikoiloa Tract Units 9 and 10 subdivisions are situated immediately to the west. A natural ridgeline generally running in a south to north direction



**Exhibit 1.1 Aerial Perspective of HMP and Petition Area**

borders the northern and eastern ends of the site. The opposite side of this ridge serves as the Kapa‘a Quarry for HC&D, LLC, with the John A. Burns Freeway (H-3 Freeway) located east of the quarry.

The Pohai Nani Good Samaritan Retirement Community (Pohai Nani) is a large assisted living facility of about 16 acres situated along the hillside behind the residential subdivision off of Namoku Street. This facility borders the northern end of HMP’s Parcel 1 property. The Pohai Nani complex includes a main 14-story tower and other accessory buildings. The south-southeastern boundary of the Petition Area consists of undeveloped area along the hillside that is part of the 122.5-acre Hawai‘i State Veterans Cemetery.

Major roadways in the vicinity of the HMP are the H-3 Freeway to the east, Kamehameha Highway to the south, and Mokulele Drive, which serves the surrounding residential neighborhoods along the western end. There are two entrance roads into HMP from Kamehameha Highway. The main entrance road, which is shared by the Hawai‘i State Veterans Cemetery, is located opposite of Halekou Road. The second entrance is located on the southern end across from Mahinui Road. From these entrances, there are several paved driveways providing vehicle circulation within the cemetery property.

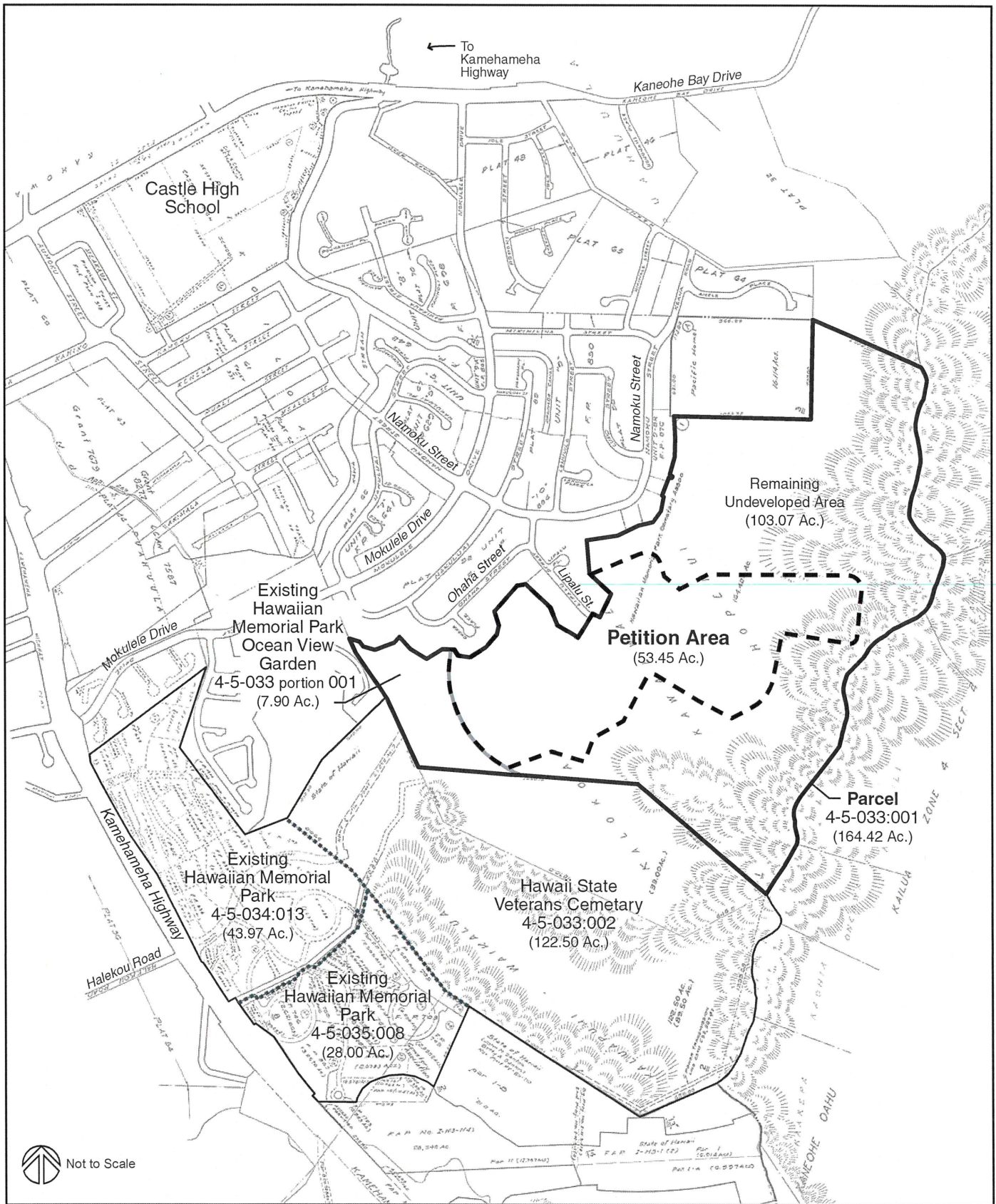
## 1.4 PROPERTY INFORMATION

The Petition Area consists of about 53.45 acres, and is a portion of a larger parcel of property identified as Tax Map Key (1) 4-5-033: 001 (Parcel 1). Parcel 1 totals 164.42 acres, and is owned by Hawaiian Memorial Life Plan Ltd. (Petitioner). About 7.9 acres of Parcel 1 consists of the existing Ocean View Garden, which is part of HMP. Of the 53.45-acre Petition Area, only 28.2 acres would be for cemetery use. The remaining 25.25 acres of the site would consist of internal roadways, open space, and land for the establishment of a cultural preserve. Figure 1.3 includes a Tax Map showing the Petition Area and other HMP parcels. The remainder of Parcel 1 (103.07 acres) would be left undeveloped. The property is currently undeveloped, and previous land uses on the property within the last 50 to 75 years include grazing and possibly agriculture (pineapple cultivation).

HMP has grown from an initial size of six acres in 1958 to its existing size of approximately 80 acres situated on three tax map parcels: (1) 4-5-034: 013 (43.97 acres); (2) 4-5-035: 008 (28.00 acres); and (3) 4-5-033: portion of 001 (7.90 acres). Parcels 13 and 8 are contiguous, but are separated from Parcel 1 by the 122.5-acre Hawaii State Veterans Cemetery (4-5-033: 002). Hawaiian Memorial Life Plan Ltd. owns and has been affiliated with HMP for the past 55 years. A summary of the Petition Area and other parcels associated with HMP is provided below.

<u>Tax Map Key Parcels</u>	<u>Total Parcel Acreage</u>
Hawaiian Memorial Park	
(1) 4-5-033: 001	164.42 acres
• <b>Petition Area (Project Site)</b>	<b>53.45 acres</b>
• Ocean View Garden	7.90 acres
• Open Space Area Remaining	103.07 acres
(1) 4-5-034: 013 (HMP)	43.97 acres
(1) 4-5-035: 008 (HMP)	28.00 acres
<b>Total</b>	<b>236.39 acres</b>





**Tax Map Key**

Hawaiian Memorial Park Cemetery Expansion Project  
Kāne'ohe, O'ahu, Hawai'i

**Figure 1.3**

This page intentionally left blank

## CHAPTER 2 PROJECT DESCRIPTION AND ALTERNATIVES

### 2.1 PROJECT NEED AND OBJECTIVES

HMP serves as the final resting place for over 41,000 persons, and accommodates an average of between 700 to 800 interments<sup>1</sup> a year from families throughout Hawai'i. HMP accommodates about 25% of all burials occurring in the state. Over the decades, as the need for additional burial space has increased, HMP has met the demand by increasing the land area available for burials within its owned property. Since 1958, as sections of the cemetery have filled, HMP has grown from six acres to their present size of about 80 acres. The most recent expansion occurred in 1999 on a 7.9-acre site within the larger Parcel 1, and is identified as the Ocean View Garden site.

#### **Inventory of Available Plots Being Exhausted**

As of June 2017, HMP has sold over 94% percent of available burial plots, and anticipates it will exhaust its available supply of burial plots in the near-term. As shown on Figure 2.1, of the approximately 79,000 individual plots, less than about 6% remain. Consequently, HMP's inventory of plots is being significantly constrained and could be exhausted in about 5 years, if not sooner.

Management of cemeteries requires a large number of available inventory, especially ground burial spaces, in order to adequately service the community, specifically allowing a choice for the future generations of the families that currently own and/or are interred at HMP. Since HMP must be able to satisfy all of these different demands, it is necessary to have vacant inventory available scattered throughout the cemetery, even as new inventory is developed. Consequently, future planning must occur well in advance of the depletion of existing inventory to ensure the needs of families can be met.

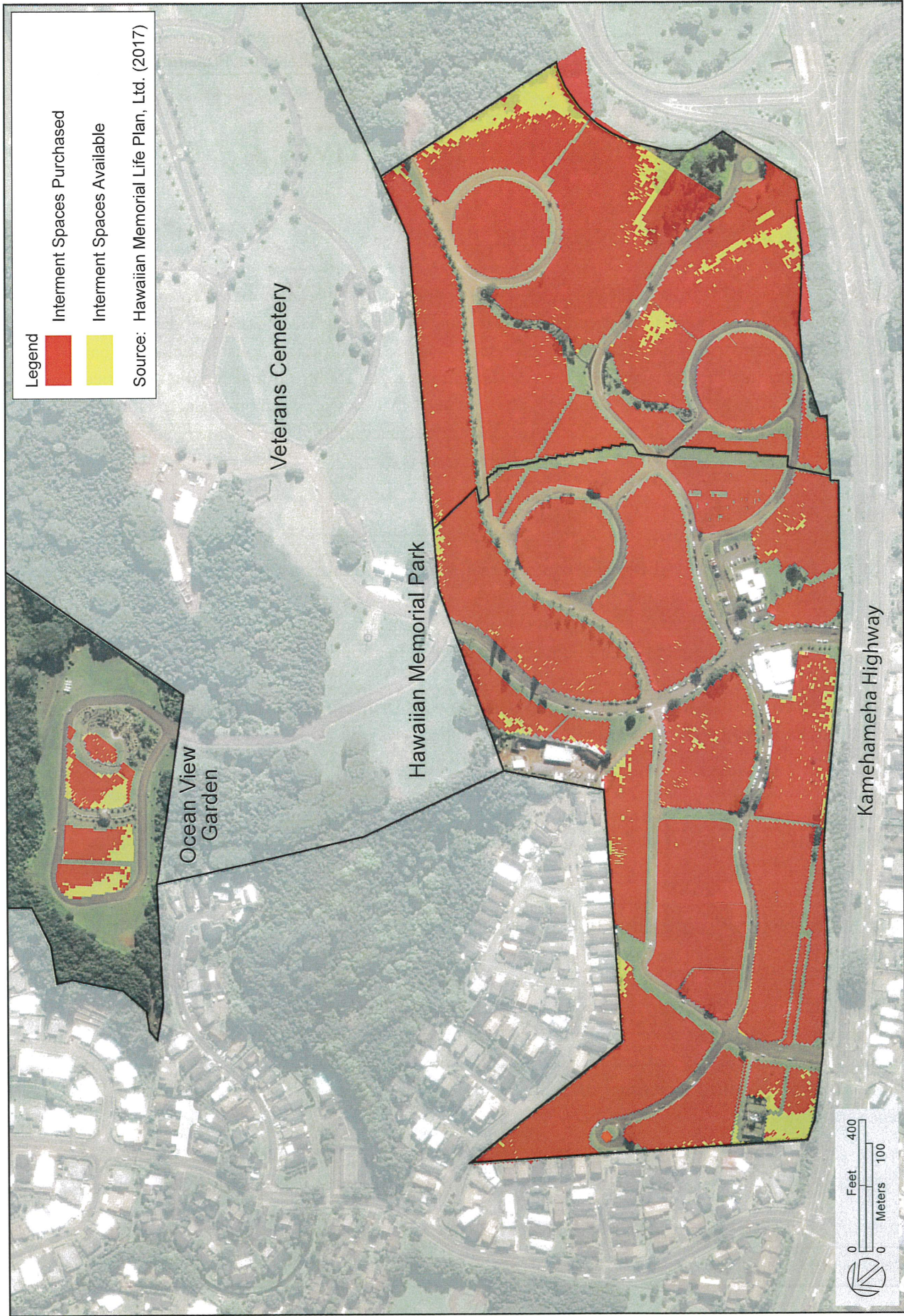
#### **Demographic Factors Contributing to Increasing Need**

The need for burial services in Hawai'i is increasing for several reasons. Hawai'i's resident population over the age of 55 is on the rise, a trend which reflects the baby boomer generation moving into and through their 50s and 60s. At the current annual rate of ground burial and with the expected increase in numbers of burials associated with Hawai'i's aging population, HMP will need to expand its inventory in order to meet increasing demand for the families they serve while maintaining vital heritage sensitivities.

---

<sup>1</sup> This includes traditional burials and disposition of cremated remains.





**Figure 2.1**

**Hawaiian Memorial Park Remaining Interment Plots**

Hawaiian Memorial Park Cemetery Expansion Project  
 Kāne'ohe, O'ahu, Hawai'i



In addition to addressing the current rate of burial ground use, there are a number of demographic factors that will influence the demand for new burial space in the future. As seen in Table 2.1, the total of Hawai'i residents that are 55+ years of age is projected to increase from 19.8% of the population in 1990 to 33.8% of the population in 2040. Numbers for population cohorts ages 70+ are even more dramatic. As a percentage of the overall population, this cohort group will grow from 7.2% of the population in 1990 to a projected 18.9% of the population in 2040. This translates to a significant increase in terms of overall numbers, from 79,421 in 1990 to a projected 323,560 by 2040.

Year	Total Population State of Hawai'i	Age 55+ (Statewide)	Percentage Age 55+	Age 70+ (Statewide)	Percentage Age 70+
1990	1,108,220	219,108	19.8%	79,421	7.2%
2000	1,212,670	266,943	22.0%	117,467	9.7%
2010	1,363,620	374,860	27.5%	138,420	10.2%
2020*	1,481,240	476,420	32.2%	198,576	13.4%
2030*	1,602,340	537,650	33.6%	278,990	17.4%
2040*	1,708,920	576,940	33.8%	323,560	18.9%

\* Projected  
Source: 2016 State of Hawai'i Data Book, Table 1.27

From the year 2000 to 2010, the annual average deaths in the state was between 8,500 and 9,200 persons based upon State Department of Business and Economic Development and Tourism (DBEDT) calculations using U.S. census data. This rate is would increase to 10,300 persons a year from 2010 to 2015, and estimated to be up to 15,800 persons a year (53% annual increase) between the years 2035 to 2040. This increasing mortality rate is due to the aging population of the state. Table 2.2 shows this increase. As a result, the need for burial plots and services is projected to increase significantly over the next 20+ years.

**Continued Demand for Burial Disposition**

The preferences for post-death care for Hawai'i residents has seen changes over the last 35 years as shown on Table 2.3. While the percentage of burials used to be almost equal to cremation as a choice of disposition in 1980, cremation has since risen to the preferred choice at about 72% in 2015. In 1980, 45% of those interred in Hawai'i were buried; whereas in 2015 that percentage has decreased to about 22%. However, the number of annual deaths has increased considerably since 1980, and therefore, the current number of annual burials are still comparable to 1980 at about 2,400 a year. From 2010 to 2015, the number of burials

Period	Number of Deaths (Average Annual)
2000-2005	8,500
2005-2010	9,200
2010-2015*	10,300
2015-2020*	11,200
2020-2025*	12,000
2025-2030*	13,000
2030-2035*	14,300
2035-2040*	15,800

\* Projected  
Source: State DBEDT, 2012



has remained fairly constant as shown on Table 2.3. Therefore, the actual demand for burial plots has remained steady and will continue to do so or even increase as a function of the aging population in the future. The large number of cremations would also require space further contributing to the demand for available space for ground interment and inurnment.

<b>Method of Disposition</b>	<b>1980</b>	<b>1990</b>	<b>2000</b>	<b>2010</b>	<b>2014</b>	<b>2015</b>
<b>All Methods</b>	<b>5,204</b>	<b>7,055</b>	<b>8,511</b>	<b>9,654</b>	<b>10,885</b>	<b>11,215</b>
Cremation	2,241 43%	3,564 51%	5,092 60%	6,661 69%	7,907 73%	8,097 72%
Burial	2,343 45%	2,798 40%	2,767 33%	2,322 24%	2,306 21%	2,399 22%
Removal/Other	620 12%	693 10%	652 8%	671 7%	672 6%	719 6%

Source: 2016 State of Hawai'i Data Book, Table 2.20

**Project Objectives**

Without proper planning for the future, Hawai'i residents could easily face a shortage of cemetery space in the near future. At the base of the Ko'olau Mountains, HMP provides a convenient location for Windward, Honolulu and Leeward communities for both initial interment and subsequent visitations to a burial site. The expansion of HMP under the proposed project would address this need for additional burial plots, and provide families with options on disposition in the future.

**2.2 PROPOSED ACTION**

Proposed improvements (Proposed Action) within the approximately 53.45-acre Petition Area would consist of two main components: 1) expansion of the HMP cemetery; and 2) creation of a 14.5-acre cultural preserve immediately to the northeast of the cemetery expansion area. Remaining undeveloped areas of Parcel 1 outside of the Petition Area would continue to remain undeveloped. Figure 2.2 includes a Proposed Concept Plan for this project, and a summary of the proposed land use is provided.

**Summary of Proposed Land Use**

1. Cemetery Expansion Area	28.20	acres
2. Internal Roadways (Approximate)	3.00	acres
3. Cultural Preserve	14.50	acres
4. Other Open Space Area	7.75	acres
<b>Total</b>	<b>53.45</b>	<b>acres</b>