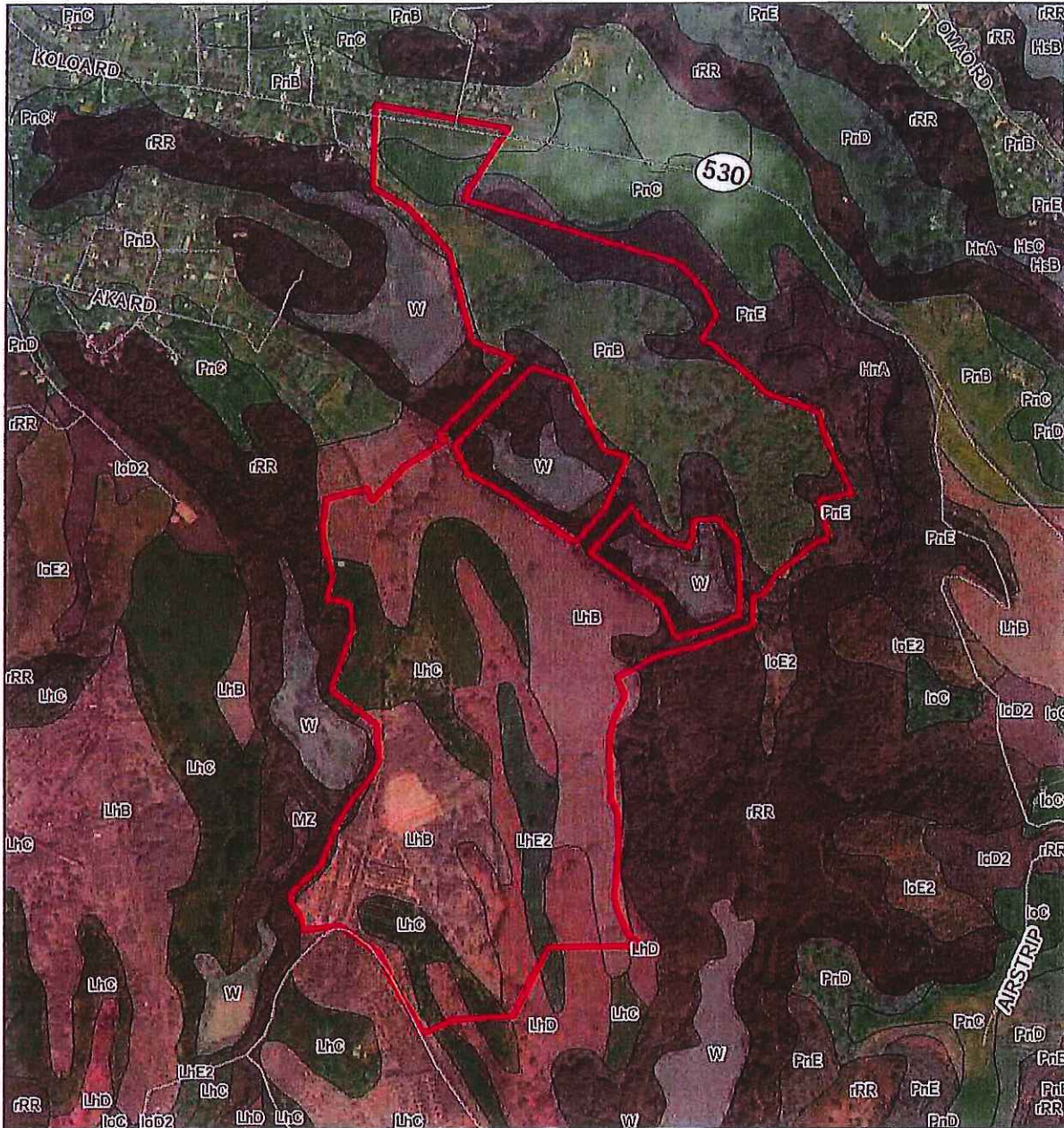


EXHIBIT "C-8"



LEGEND

Proposed Project Site

Soil Survey Classification

HnA-Hanalei silty clay, 0-2%

HsB-Hanamaulu silty clay, 3-8%

HsC-Hanamaulu silty clay, 8-15%

LcC-Ioleau silty clay loam, 6-12%

LcD2-Ioleau silty clay loam, 12-20%*

LcE2-Ioleau silty clay loam, 20-30%*

KayC-Kaena clay, brown variant, 6-12%

Kvd-Koloa stony silty clay, 15-25%

LhB-Lihue silty clay, 0-8%

LhC-Lihue silty clay, 8-15%

LhD-Lihue silty clay, 15-25%

LhE2-Lihue silty clay, 25-40%*

MZ-Marsh

PnB-Puhi silty clay loam, 3-8%

PnC-Puhi silty clay loam, 8-15%

PnD-Puhi silty clay loam, 15-25%

PnE-Puhi silty clay loam, 25-40%

W-Water > 40 acres

rRR-Rough broken land

*Soil Eroded

NOTES:

Soil Survey Classification Source: Natural Resources Conservation Service, United States Department of Agriculture, Web Soil Survey, Available online at <https://websoilsurvey.nrcs.usda.gov/>
 Scale: The boundaries of the subject property and proposed project are approximations and may differ slightly from that shown.
 Basemap Source: Google Earth, 2013.

FIGURE 7
NRCS Soil Survey Classification
Lawai Solar and Storage Project
 Koloa, Kauai, Hawaii

