

ORIGINAL

CARLSMITH BALL LLP

MARK K. MURAKAMI 4573
JENNIFER A. LIM 8357
1001 Bishop Street, Suite 2100
Honolulu, HI 96813
Tel No. 808.523.2500

RECEIVED
OCT 18 2017

STATE OF HAWAII
LAND USE COMMISSION

Attorneys For Petitioner
MONSANTO COMPANY,
a Delaware corporation

BEFORE THE LAND USE COMMISSION

OF THE STATE OF HAWAII

In the Matter of the Petition of

MONSANTO COMPANY, a Delaware
corporation

For Declaratory Order to Designate Important
Agricultural Lands for approximately
1,084.079 acres at Naiwa, Manowainui,
Kahanui, Moloka'i, identified by TMK No. (2)
5-2-012-004

DOCKET NO. DR17-60

ERRATA TO PETITIONER'S EXHIBIT 16
FILED ON OCTOBER 16, 2017

PETITIONER'S LIST OF EXHIBITS; PETITIONER'S EXHIBITS 11 - 16

Petitioner MONSANTO COMPANY, a Delaware corporation ("**Petitioner**"), hereby respectfully submits this Errata to reflect corrections to the errors on Power Point slides 16 and 17 of Petitioner's Exhibit 16, which was filed with the Land Use Commission of the State of Hawaii on October 16, 2017. Post-filing, errors of a typographical nature were discovered on slides 16 and 17, and Petitioner therefore wishes to replace those slides with the enclosed slides 16 and 17 (Moloka'i Community Plan (Current); Moloka'i Community Plan (2017 DRAFT), respectively). Counsel regrets any inconvenience caused by this oversight.

DATED: Kaunakakai, Hawaii, October 18,
2017.

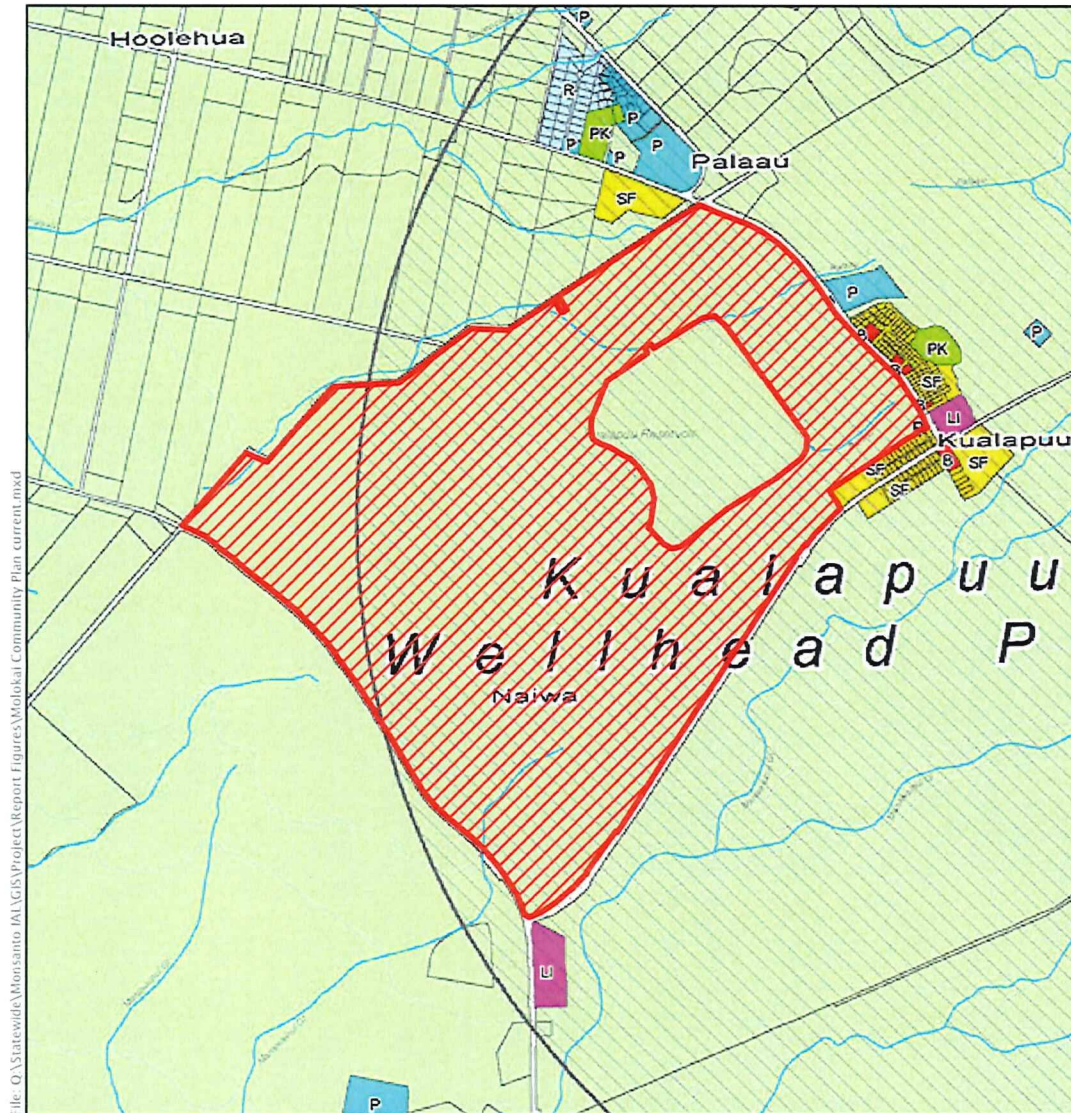


MARK K. MURAKAMI
JENNIFER A. LIM

Attorneys for Petitioner
MONSANTO COMPANY, a Delaware
corporation

Moloka'i Community Plan (Current)

Agriculture



DATE: 9/26/2017

LEGEND

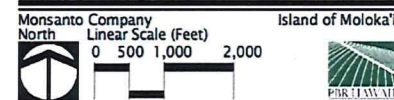
- Proposed IAL
- Agriculture
- Wellhead Protection Buffer

Source: Molokai Community Plan (2001), County of Maui.
Disclaimer: This graphic has been prepared for general planning purposes only.

Figure 9a

Molokai Community Plan (current)

Monsanto IAL



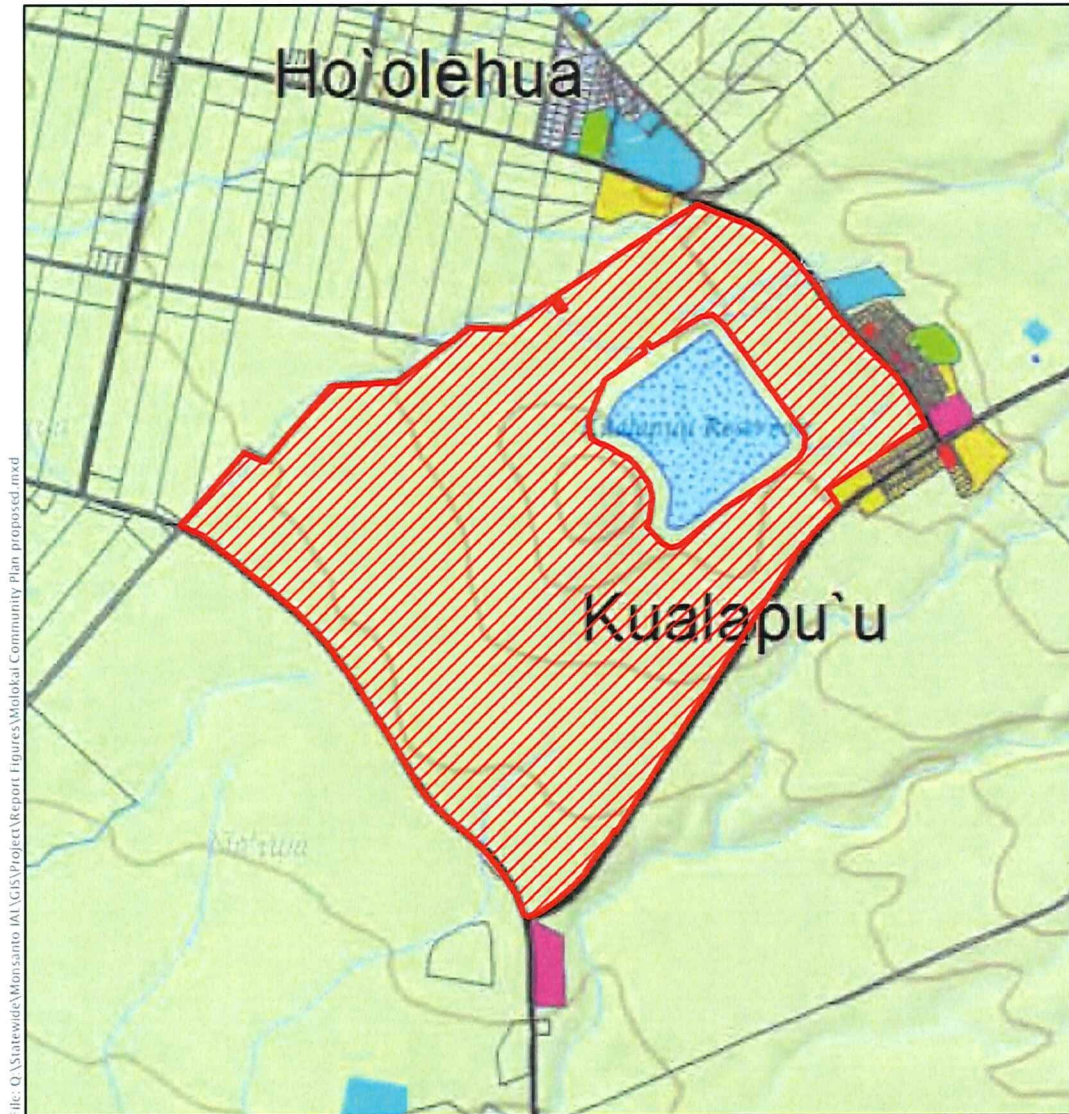
Standards and criteria . . . *land whose designation as IAL is consistent with general, development, and community plans of the county. (HRS §205-44(c)(6))*

MONSANTO



Moloka'i Community Plan (2017 DRAFT)

Agriculture



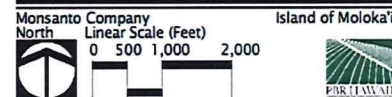
DATE: 9/26/2017

LEGEND

-  Proposed IAL
-  Agriculture

Figure 9b

Molokai Community Plan (2017 DRAFT)

Monsanto IAL

Source: Molokai Community Plan Update, Planning Department/CPAC/MoPC DRAFT dated May 5, 2017
 Disclaimer: This graphic has been prepared for general planning purposes only.

Standards and criteria . . . *land whose designation as IAL is consistent with general, development, and community plans of the county. (HRS §205-44(c)(6))*

MONSANTO