



## FIGURES

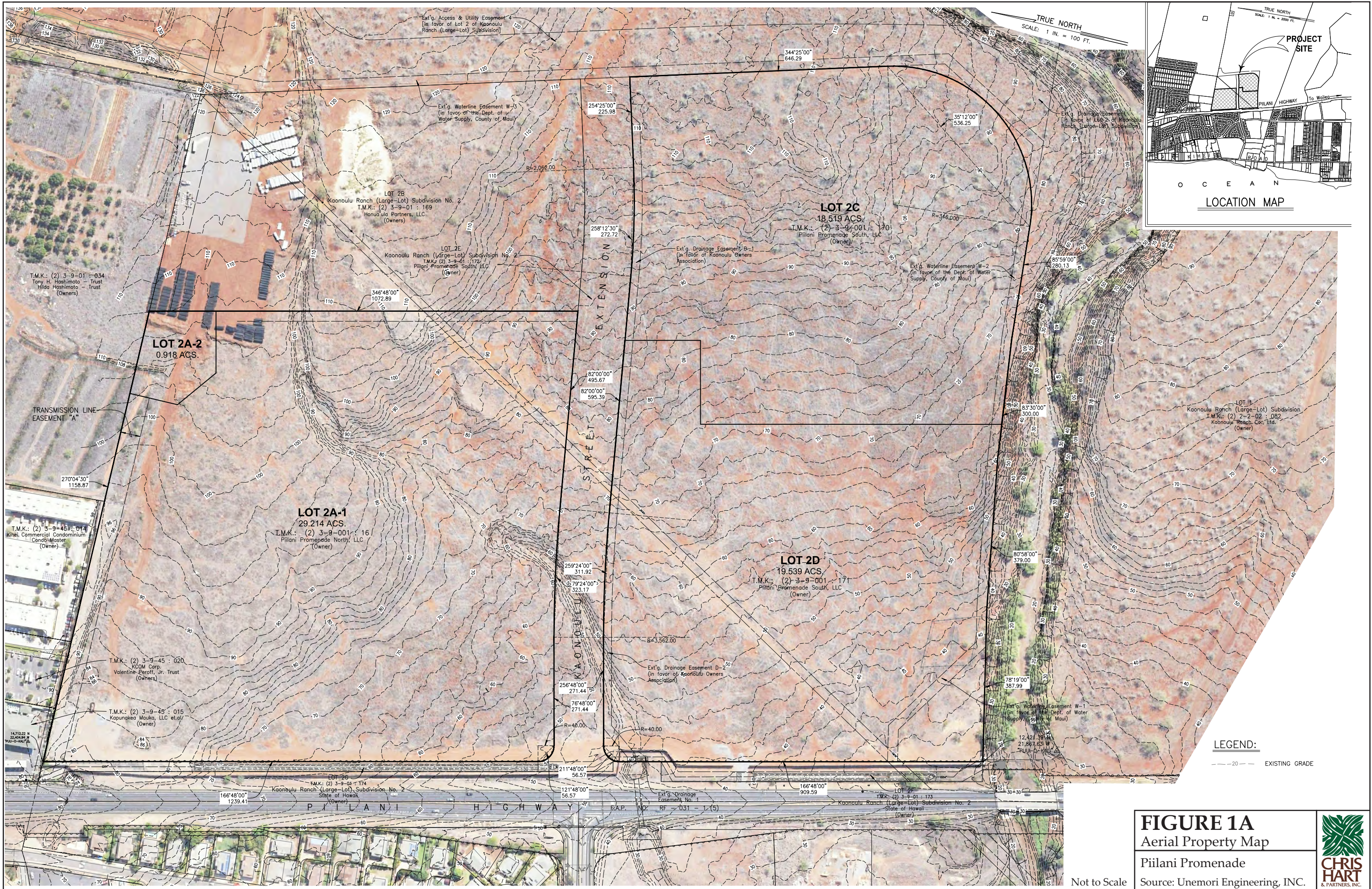


**FIGURE 1**

Regional Location Map  
Pi'ilani Promenade



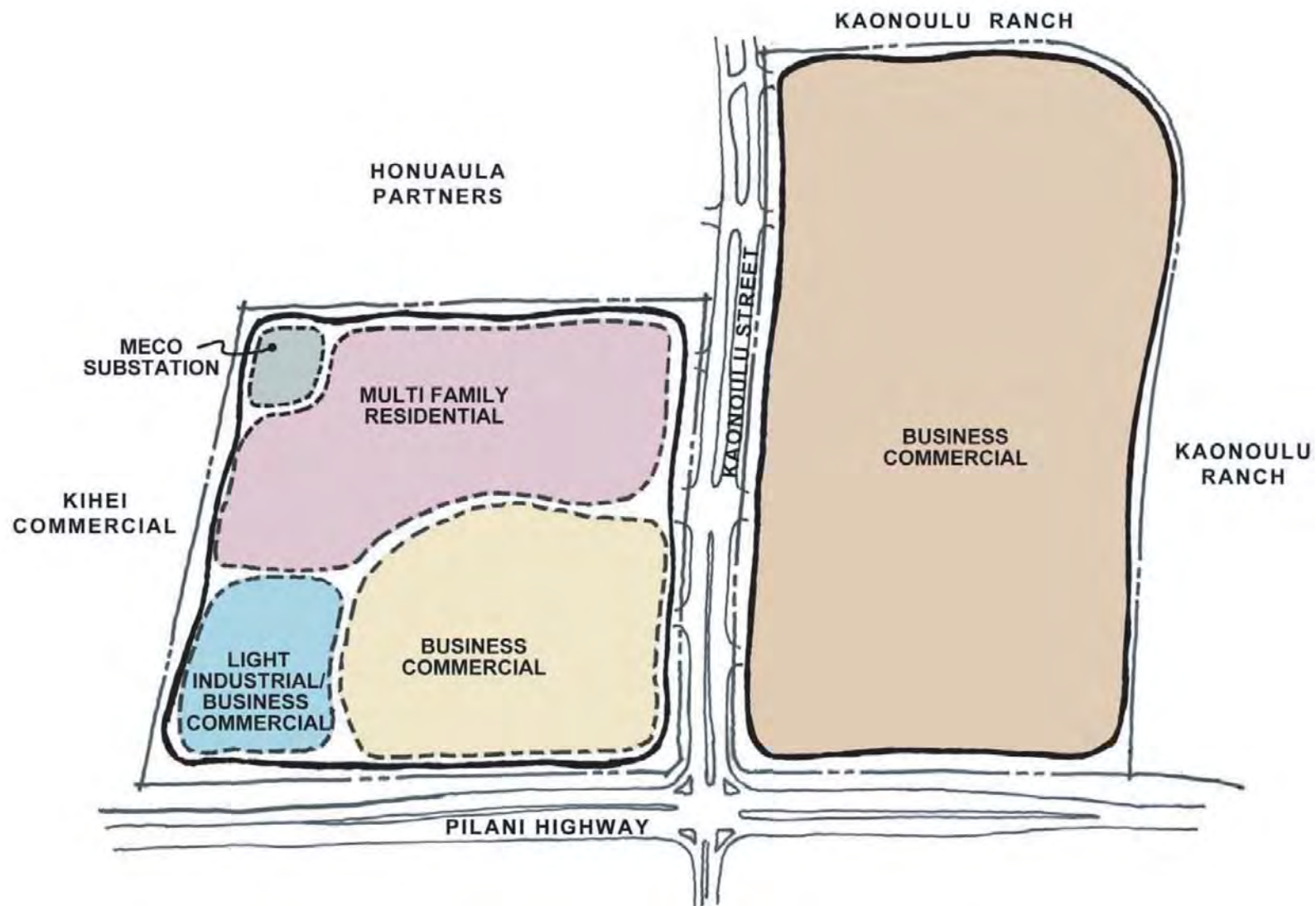








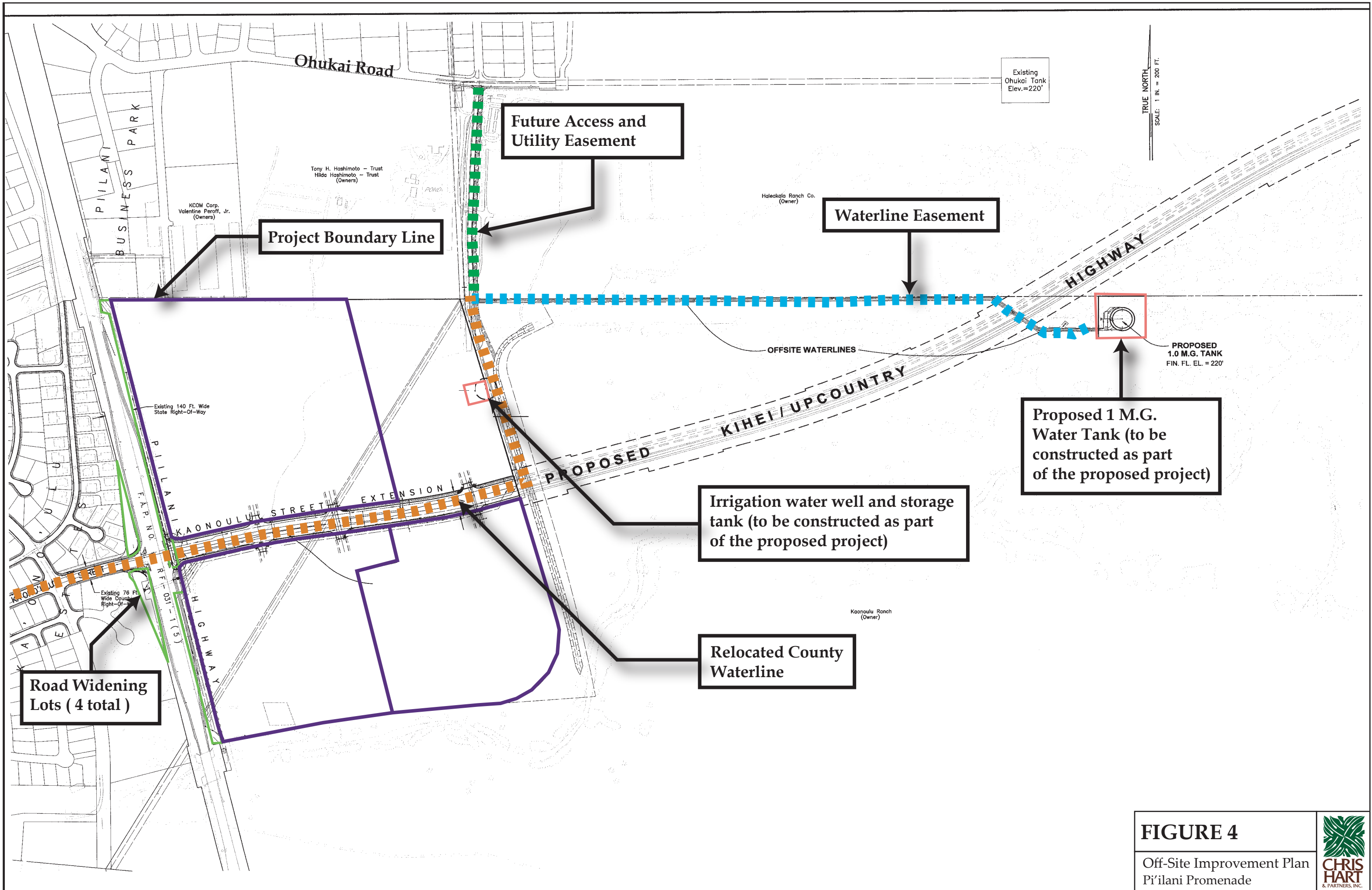




**FIGURE 3**

Conceptual Site Plan  
Pi'ilani Promenade

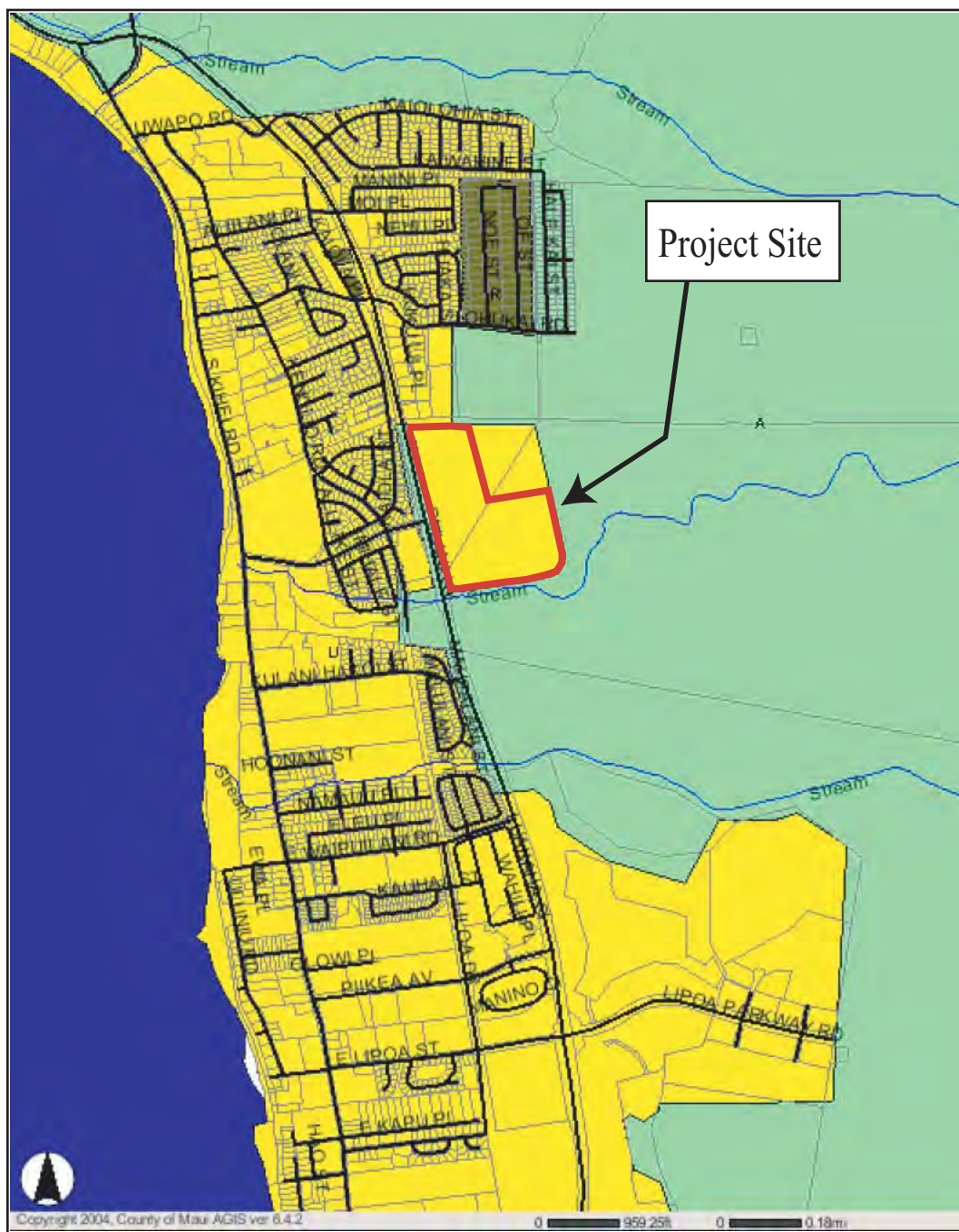




**FIGURE 4**

Off-Site Improvement Plan  
Pi'ilani Promenade





### Legend





-  Agricultural  
 Conservation  
 Rural  
 Urban

FIGURE 5

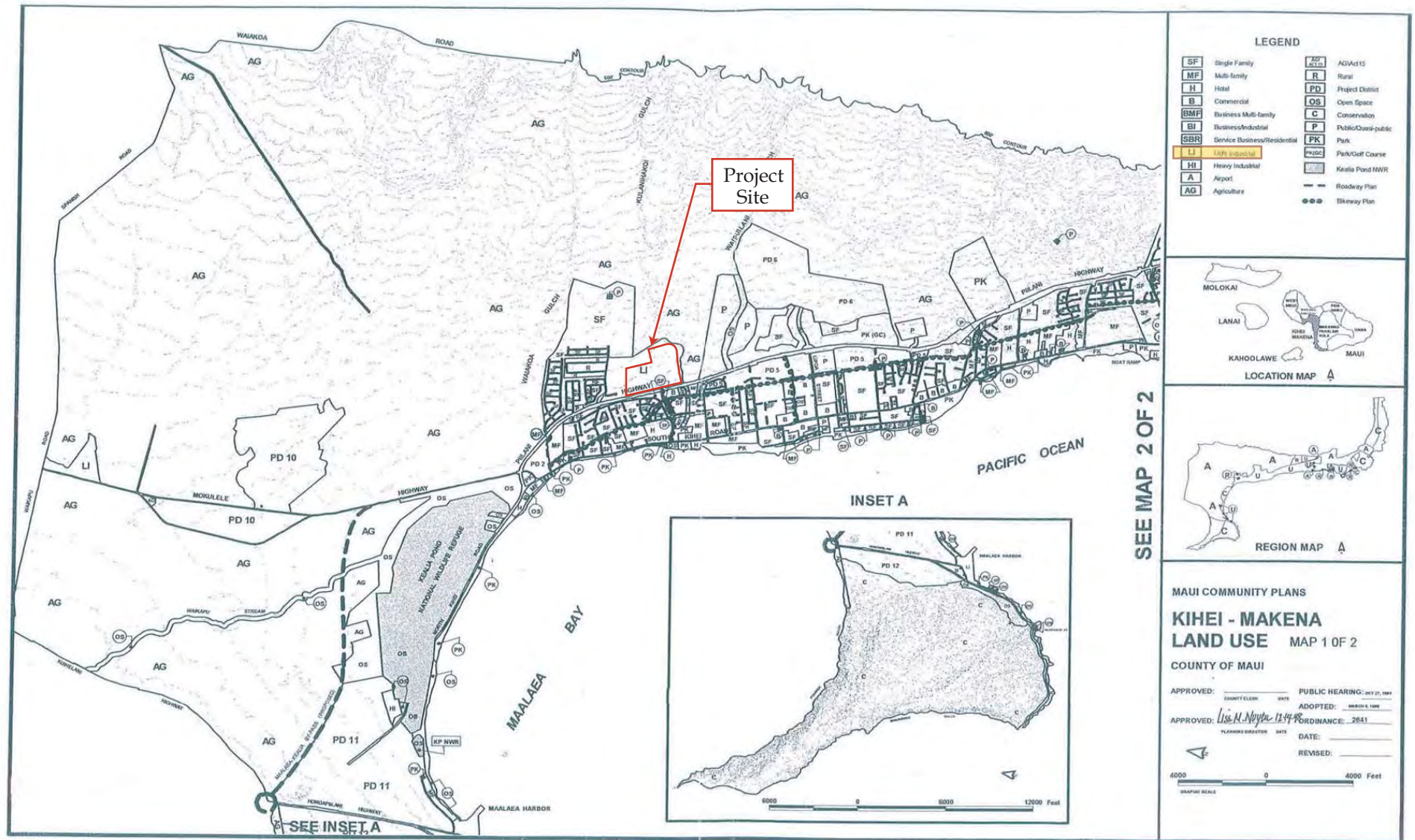
State Land Map  
Pi'ilani Promenade









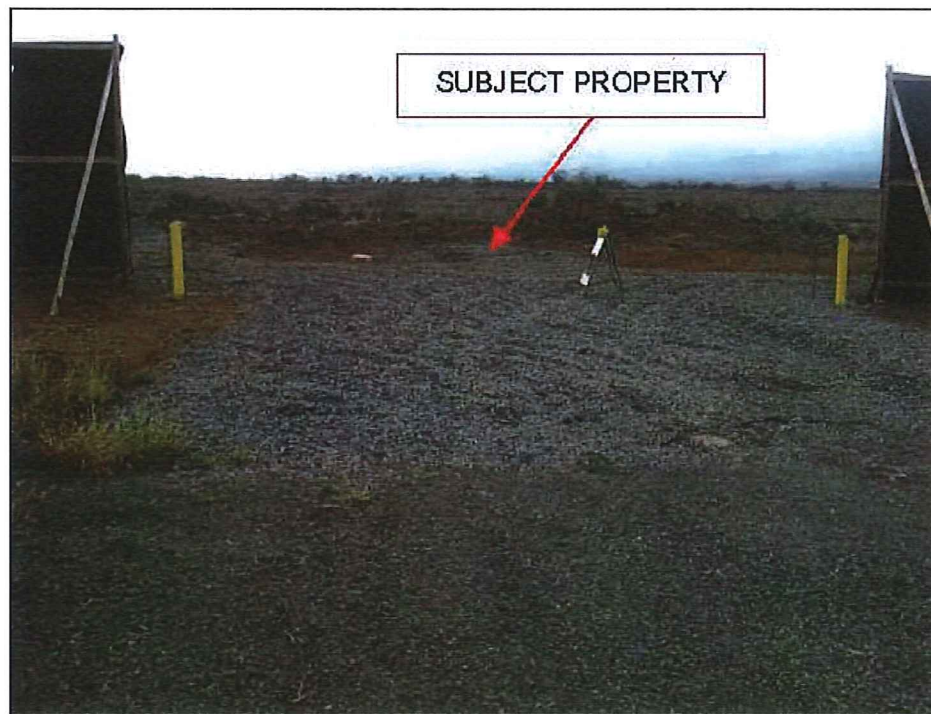


**FIGURE 7**

Kihei-Makena Community Plan Map  
 Pi'ilani Promenade



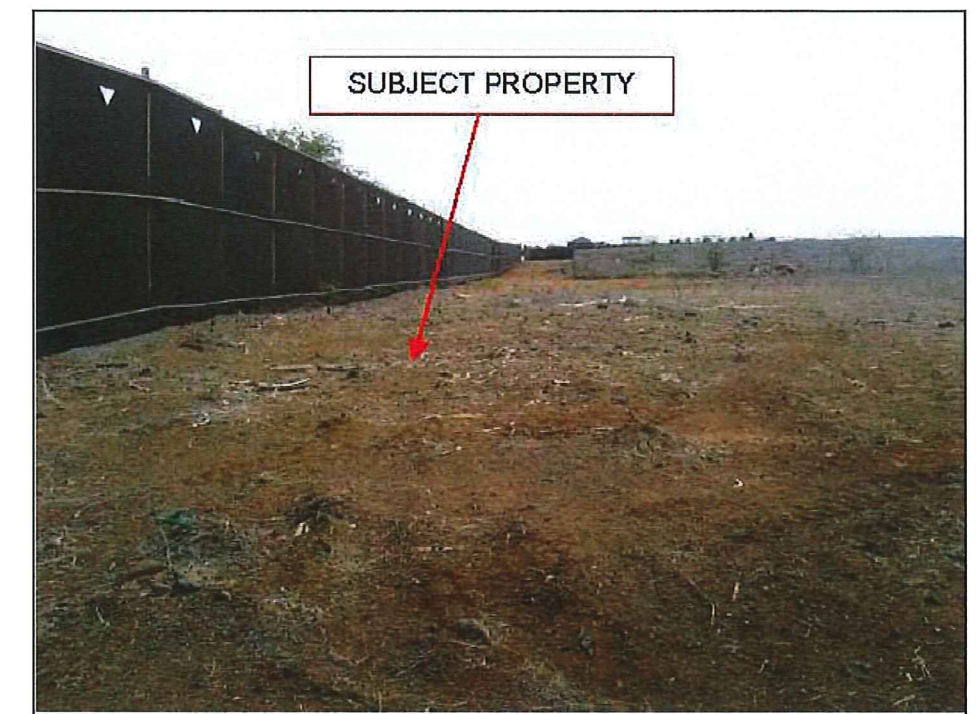




View of the property construction entrance from Piilani Highway.



View of concrete drainage culvert that runs along the western boundary of the subject property and under Piilani Highway.



View from the southwest corner of the subject property looking North.



View of the subject property looking Northwest towards the adjacent commercial and light industrial uses.



View of Drainageway "A" located on the property.



View of ranch enclosure located on Parcel 171.

## FIGURE 8

Site Photographs  
Pi'ilani Promenade

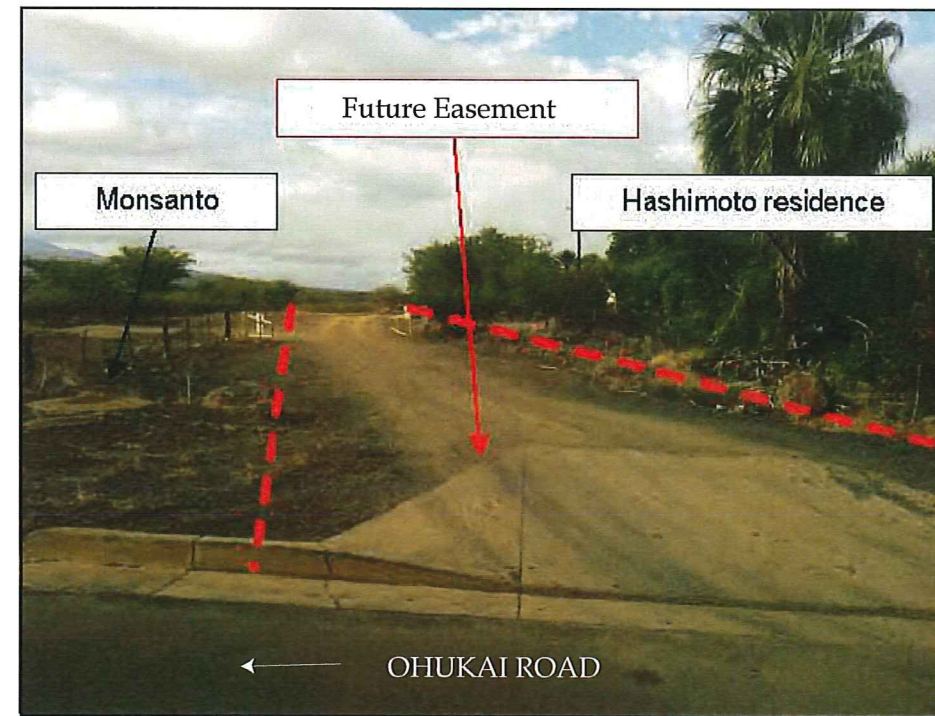
Photos provided by: 1) Xamanek Researches, LLC (Feb. 2014)  
2) Malama Environmental LLC. (July 2013)







View from the proposed waterline easement located mauka of the project site looking west towards the Pacific Ocean.



View of future roadway and electrical easement from Ohukai Road.



View from the proposed 1.0 MG water tank site located mauka of the project site looking west towards the Pacific Ocean.



View of Intersection of Kaonoulu Street and Piilani Highway looking North. This will become a signalized intersection.



View of Intersection of Kaonoulu Street and Piilani Highway looking South. This will become a signalized intersection.



View of Piilani Highway with project dust fence in the background.

## FIGURE 8A

Site Photographs  
Pi'ilani Promenade

Photos provided by: 1) Xamanek Researches, LLC (Feb. 2014)  
2) Malama Environmental LLC. (July 2013)

