

RECEIVED

'11 DEC 15 P4:26

DEPT OF PLANNING
AND PERMITTING
CITY & COUNTY OF HONOLULU

CADES SCHUTTE LLP

CALVERT G. CHIPCHASE 7757-0

CHRISTOPHER T. GOODIN 8562-0

1000 Bishop Street, Suite 1200

Honolulu, Hawai'i 96813-4212

Telephone: (808) 521-9200

Facsimile: (808) 521-9210

E-mail: cchipchase@cades.com

cgoodin@cades.com

Attorneys for Intervenors

KO OLINA COMMUNITY ASSOCIATION

and MAILE SHIMABUKURO

BEFORE THE PLANNING COMMISSION

OF THE CITY AND COUNTY OF HONOLULU

STATE OF HAWAII

In the Matter of the Application of

DEPARTMENT OF ENVIRONMENTAL
SERVICES, CITY AND COUNTY OF
HONOLULU

To delete Condition No. 14 of Special
Use Permit No. 2008/SUP-2 (also
referred to as Land Use Commission
Docket No. SP09-403) which states as
follows:

"14. Municipal solid waste shall be
allowed at the WGSL up to July 31,
2012, provided that only ash and residue
from H-POWER shall be allowed at the
WGSL after July 31, 2012."

FILE NO. 2008/SUP-2

INTERVENORS KO OLINA
COMMUNITY ASSOCIATION AND
MAILE SHIMABUKURO'S
ERRATA TO EXHIBIT K154

EXHIBIT K154

CERTIFICATE OF SERVICE

KOCA 19

**INTERVENORS KO OLINA COMMUNITY ASSOCIATION AND MAILE
SHIMABUKURO'S ERRATA TO EXHIBIT K154**

Intervenors Ko Olina Community Association and Maile Shimabukuro submit this errata to Exhibit K154 filed December 13, 2011. Exhibit K154 is a set of photographs taken by and obtained from the Hawai'i Department of Health Clean Water Branch following the January 2011 spill. The photographs were intended to be marked with the dates on which they were taken. However, the photographs were marked with incorrect dates. A copy of Exhibit K154 with corrected dates is attached hereto as Exhibit K154.

DATED: Honolulu, Hawai'i, December 15, 2011.

CADES SCHUTTE
A Limited Liability Law Partnership



CALVERT G. CHIPCHASE
CHRISTOPHER T. GOODIN

Attorneys for Intervenors
KO OLINA COMMUNITY ASSOCIATION
and MAILE SHIMABUKURO



1/13/2011 15:35

EXHIBIT K154 at 1



1/13/2011 15:40

EXHIBIT K154 at 2



1/15/2011 13:00

EXHIBIT K154 at 3



1/20/2011 14:25

EXHIBIT K154 at 4



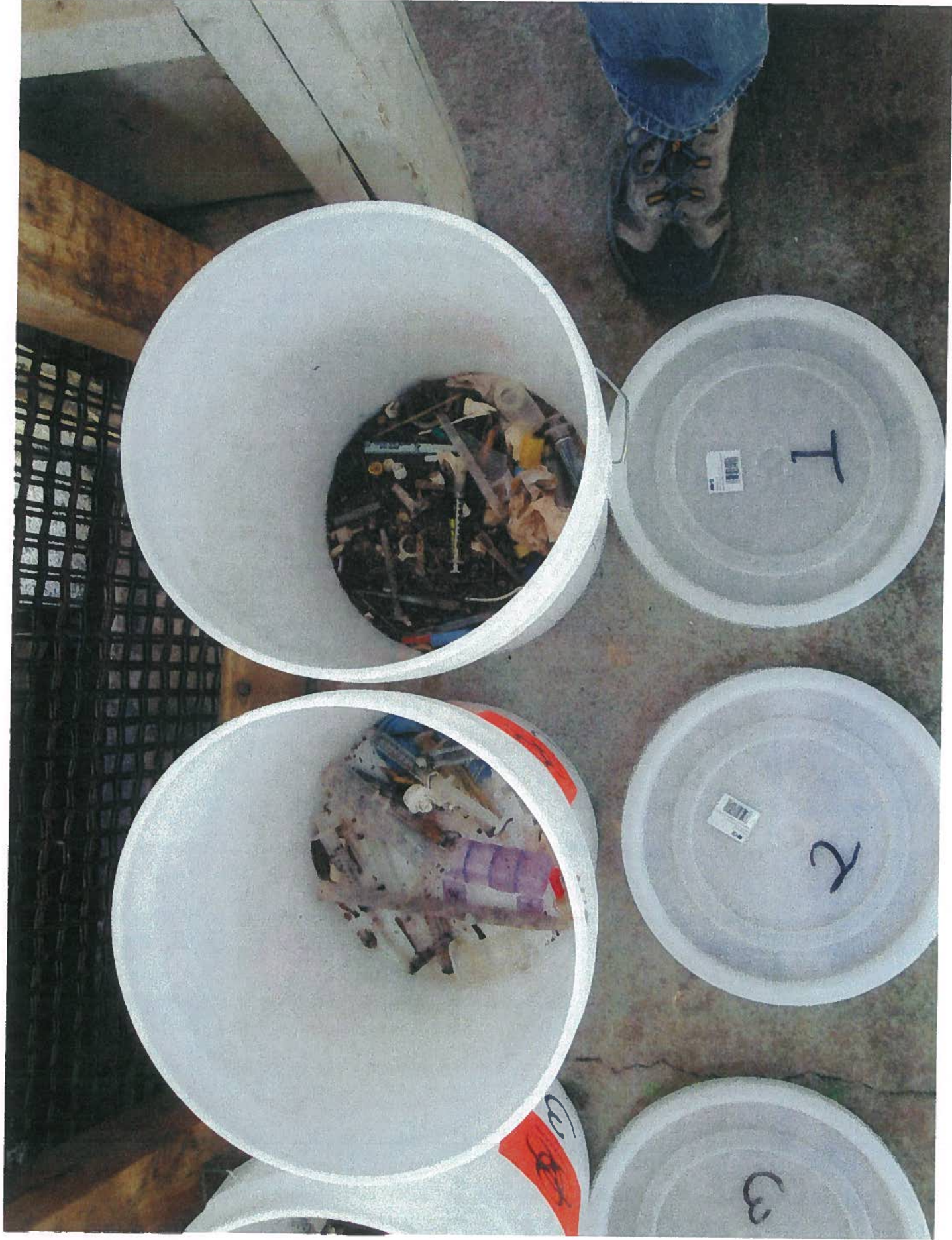
1/20/2011 14:25

EXHIBIT K154 at 5



1/20/2011 14:25

EXHIBIT K154 at 6



1/20/2011 14:26

EXHIBIT K154 at 7

BEFORE THE PLANNING COMMISSION
OF THE CITY AND COUNTY OF HONOLULU
STATE OF HAWAII

In the Matter of the Application of
DEPARTMENT OF ENVIRONMENTAL
SERVICES, CITY AND COUNTY OF
HONOLULU

FILE NO. 2008/SUP-2

CERTIFICATE OF SERVICE

To delete Condition No. 14 of Special
Use Permit No. 2008/SUP-2 (also
referred to as Land Use Commission
Docket No. SP09-403) which states as
follows:

“14. Municipal solid waste shall be
allowed at the WGSL up to July 31,
2012, provided that only ash and residue
from H-POWER shall be allowed at the
WGSL after July 31, 2012.”

CERTIFICATE OF SERVICE

The undersigned certifies that on this day a copy of the foregoing document was
duly served on the following persons:

ROBERT CARSON GODBEY, ESQ.
Corporation Counsel
DANA VIOLA, ESQ.
ROBERT BRIAN BLACK, ESQ.
Deputies Corporation Counsel
City and County of Honolulu
530 South King Street, Room 110
Honolulu, Hawai'i 96813

(Hand Delivery)

Attorneys for DEPARTMENT OF ENVIRONMENTAL SERVICES,
CITY AND COUNTY OF HONOLULU

DEPARTMENT OF ENVIRONMENTAL SERVICES (Certified Mail)
City and County of Honolulu
1000 Uluohia Street, Suite 308
Kapolei, Hawai'i 96707

DEPARTMENT OF PLANNING AND PERMITTING (Hand Delivery)
City and County of Honolulu
650 South King Street, 7th Floor
Honolulu, Hawai'i 96813

IAN L. SANDISON, ESQ. (Hand Delivery)
DEAN H. ROBB, ESQ.
TIM LUI-KWAN, ESQ.
Carlsmith Ball LLP
American Savings Bank Tower
1001 Bishop Street, Suite 2200
Honolulu, Hawai'i 96813

Attorneys for Intervenor
SCHNITZER STELL HAWAII CORP.

DATED: Honolulu, Hawai'i, December 15, 2011.

CADES SCHUTTE
A Limited Liability Law Partnership



CALVERT G. CHIPCHASE
CHRISTOPHER T. GOODIN

Attorneys for Intervenors
KO OLINA COMMUNITY ASSOCIATION
and MAILE SHIMABUKURO