

Chapter

5



**KAWAIHAU DISTRICT**

## KAWAIHAU DISTRICT

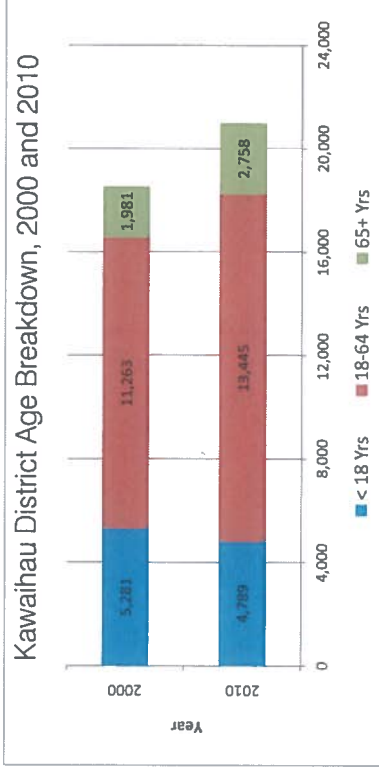
Kawaihau District, on the east side, extends from Moloa'a south to the Wailua River. It includes the towns and resorts in the coastal urban corridor of Wailua, Waipouli and Kapā'a. The sprawling residential communities of Kapahi, Wailua Houselots, and Wailua Homesteads are located in the uplands. The Hawaiian Home Lands community of Anahola spans the mauka and makai sides of Kūhiō Highway.

This area has scenic mountains and sand beaches which are located within short distances of each other and readily accessible by the public.

Kawaihau District is the largest of the planning districts. Population increased significantly as residential development kept pace with the growth of coastal resorts and economic opportunities in nearby Līhū'e.

### District Profile at a Glance

<b>Resident Population</b>	
1990	15,627
2000	18,525
2010	20,992
Net change 1990-2000	2,898
Percent change 1990-2000	18.5%
Net change 2000-2010	2,467
Percent change 2000-2010	13.3%
Net change 1990-2010	5,365
Percent change 1990-2010	34.3%



<b>Households</b>	
Number of households in 2010	7,374
Households with persons under 18 years	2,570
Households with persons 65+ years	2,045
Households with three or more generations	627
Average household size	2.74-3.15*
<b>Visitor Accommodations</b>	
Number of visitor units in 2010	2,029

\* The U.S. Census Bureau provides average household size data for census tracts. There are three census tracts in the Kawaihau District with average household size as follows: Anahola 3.15; Kapā'a 3.02; and Wailua 2.74.

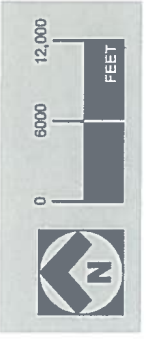
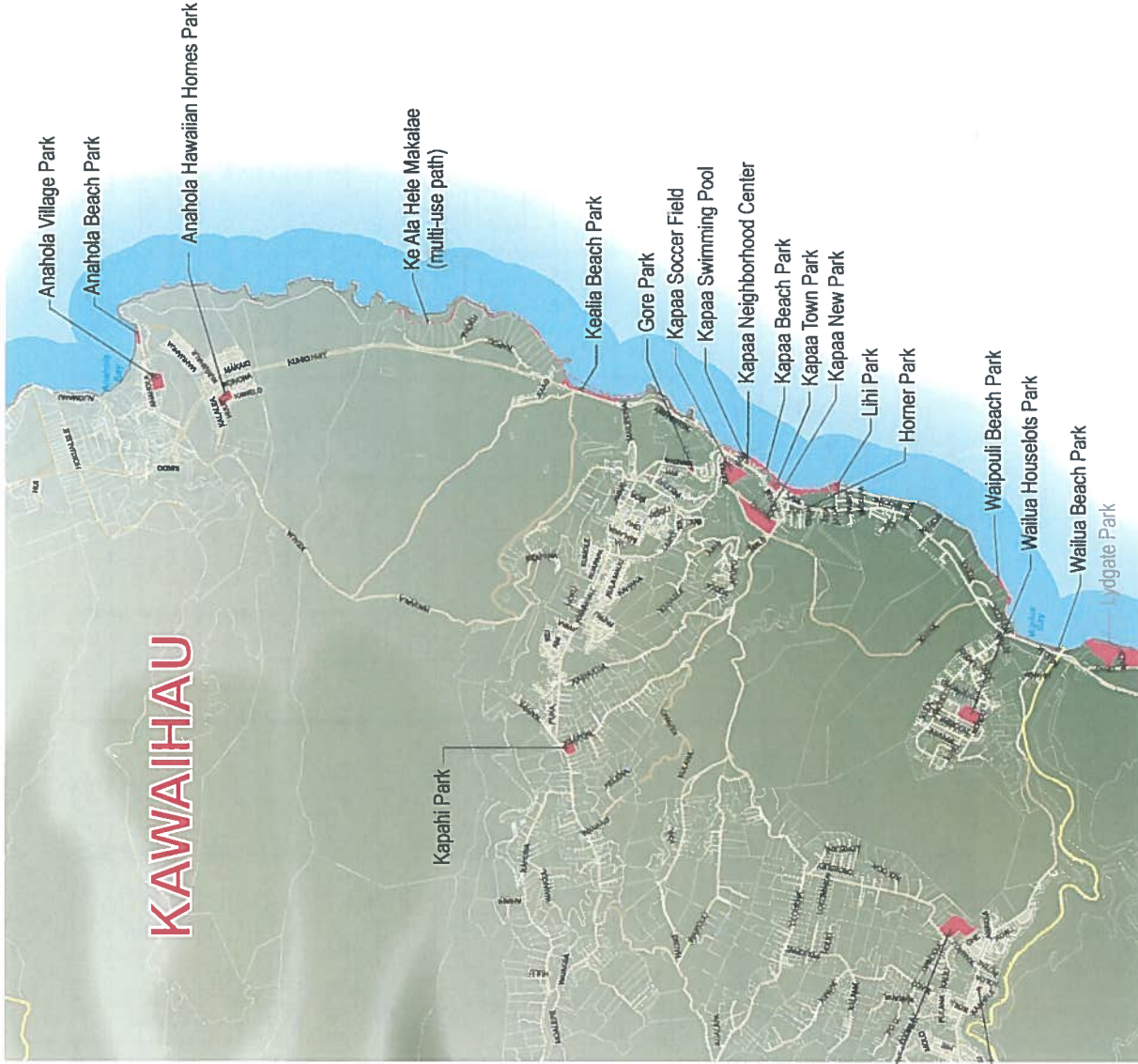
Source: All data from U.S. Census Bureau, 2010 U.S. Census, except for data on visitor units from the 2011 Visitor Plant Inventory, Hawai'i Tourism Authority

**Existing County Parks and Recreation Facilities**

Table 20 lists the existing parks and recreation facilities. Locations are shown in Figure 21.

**Table 20**  
Parks Inventory for Kawaihau District

Park Name	Type	Acreage by Park Type											
		Undeveloped	Passive	Neighborhood Park	District Park	Regional Park	Beach Park	Linear Park	Special Use Area	Total Acres			
Anahola Beach Park	Beach						1.54						
Anahola Hawaiian Homes Park and Clubhouse	Neighborhood			4.86									
Anahola Village Park	Neighborhood			6.99									
Gore Park	Passive		0.73										
Homer Park	Passive		0.18										
Kapaa Beach Park	Beach						12.00						
Kapaa Neighborhood Center, Swimming Pool	Neighborhood Ctr.											0.83	
Kapaa New Park	District				18.08								
Kapaa Soccer Field	District	X			11.51								
Kapaa Town Park	Neighborhood			2.78									
Kapahi Park	Neighborhood			4.00									
Ke Ala Hele Makalae-Ahihi Pt to Anahola	Linear	X								unknown			
Ke Ala Hele Makalae-Lihi Park to Ahihi Pt	Linear									7.45			
Ke Ala Hele Makalae-Lydgate Park to Lihi Park	Linear									3.82			
Kealia Beach Park	Beach						7.24						
Lihi Park	Beach						2.59						
Waihua Beach Park	Beach						5.06						
Waihua Homesteads Park	Neighborhood			16.63									
Waihua Houselots Park	Neighborhood			10.05									
Waihua Riverview (Estates) Park	Neighborhood	X		0.86									
Waipouli Beach Park	Beach						6.36						
<b>Kawaihau-Developed Acres</b>			<b>0.91</b>	<b>45.31</b>	<b>18.08</b>	<b>0.00</b>	<b>34.79</b>	<b>11.27</b>	<b>0.83</b>	<b>111.20</b>			
<b>Kawaihau-Undeveloped Acres</b>				<b>0.86</b>	<b>11.51</b>					<b>12.37</b>			
<b>Kawaihau-Total Acres</b>			<b>0.91</b>	<b>46.17</b>	<b>29.59</b>	<b>0.00</b>	<b>34.79</b>	<b>11.27</b>	<b>0.83</b>	<b>123.57</b>			



**KAWAIHAU DISTRICT EXISTING PARKS & RECREATION FACILITIES**  
 Kauai Department of Parks & Recreation • 2013

**FIGURE 21**



**Non-County Parks and Recreation Facilities**

- Waikaeae Canal Boat Ramp
- Boys and Girls Club of Kauai - Kapapa Clubhouse
- Kauai Police Athletic League (KPAL) Youth Center
- Wailua River State Park
- Wailua Marina
- Wailua and Kaunualii Launch Ramps
- Keahua Arboretum
- Kealia and Nonou State Forest Reserves and numerous mauka trails

**Park Service Areas**

Figure 22 shows existing parks with a 0.5 mile service radius around neighborhood parks and a 3 mile radius around Kapa'a New Park, a district park. In general, the parks in Kawaihau District are well-located to serve the population clusters. The central location of Kapa'a New Park provides a focal point for recreational activity. Neighborhood parks serve outlying communities. Although these parks do not fully cover the broadly expansive mauka subdivisions, they are dispersed throughout the district.

**Input from the Park User Survey**

Table 21 lists leisure activities that are popular among Kawaihau District residents, as reported in the user survey. Table 22 lists the types of facilities they would like to see added to the district's parks.

**Table 21**

User Survey: Leisure Activities





Activity	Kawaihau District
Walk, Jog, Run	47
Picnic	39
Swim, Surf, Beach	39
Party	34
Bike	28
Camp	24
Fish	21
Fitness Aerobics	19
Basketball	17
Skate	16
Swim Pool	16
Arts and Craft	13
Tennis	13
Soccer	12
Golf	11
Playground	10
Hula Dance	8
Volleyball	8
Football	7
Baseball Softball	6
Roller Hockey	5
Bowling	4
Motorcycle ATV	4
Martial Arts	3
Horse Riding	1
Weights	1

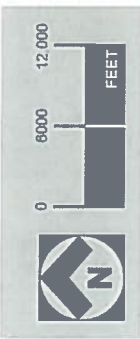
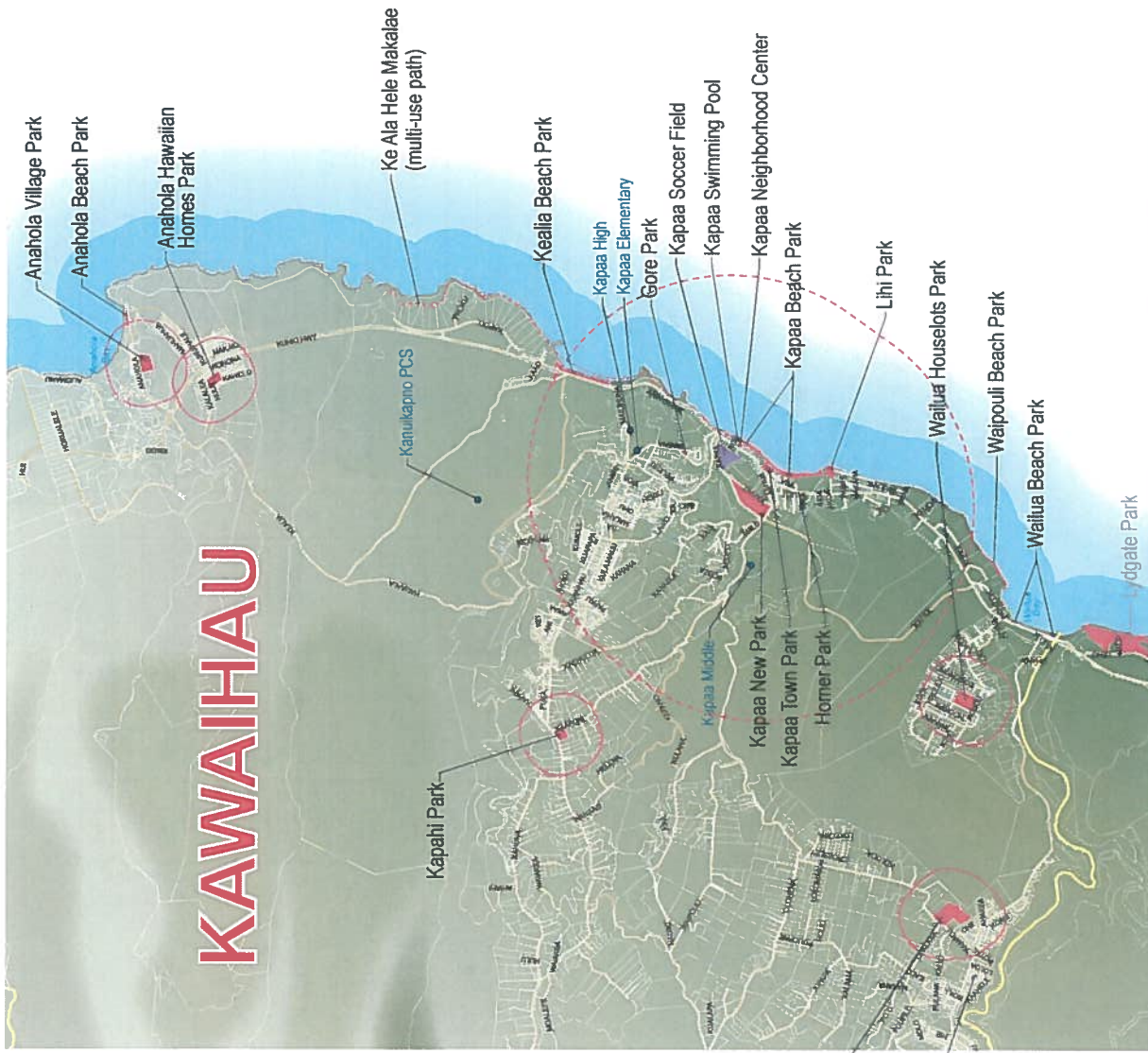
**Table 22**

User Survey: Priorities for New Park Facilities

What recreational facilities should be added by the County to meet your needs? (Aggregated Count)	Kawaihau District
<b>Preference for New Facilities</b>	
Indoor gyms and fitness facilities	16
Skate parks	16
Walking and bicycling paths	14
Community recreation centers	12
Picnic facilities and pavilions	12
Recreation beaches	11
Children's playground	10
Dog parks (off-leash)	10
Tennis courts	10
Camping facilities	9
Passive (leisure) parks	9
Swimming pools	6
Senior recreation centers	2
Baseball/softball fields	1
Basketball	1
Concert venue	1
Classrooms for coastal education	1
Football fields	1
Indoor skate rink	1
Nine hole golf course mauka of Wailua course	1
Roller derby rink/Indoor facility	1
Soccer fields	1

**LEGEND**

-  Neighborhood Park (1/2 mile radius)
-  District Park (3 mile radius)
-  Existing Park
-  Undeveloped Park



**KAWAIHAU DISTRICT PARK SERVICE AREAS**  
 Kauai Parks & Recreation Master Plan • County of Kauai Department of Parks & Recreation • 2013

**FIGURE 22**

### Master Plan Recommendations for the Kawaihau District

- Kapaʻa New Park is envisioned as an expanded district park to include a new gym.
- Kapaʻa Neighborhood Center and swimming pool are proposed for relocation to the expanded district park complex. This cluster could also house a youth center and senior center. As conceptualized in this master plan, these facilities would be located on land that is owned by the Department of Hawaiian Home Lands. The new recreation facilities are expected to be compatible with, and could serve as a catalyst for future development of a town center.

• An existing plan to develop soccer fields north of Kapaʻa New Park should be implemented. Kahau Road can be extended to provide an internal connection between the soccer fields and Kapaʻa New Park. The road extension would also provide opportunities to construct supplemental parking.

• If the State Department of Transportation realigns the temporary bypass road which skirts Kapaʻa New Park, there will be additional land for park expansion.

• After the new Kapaʻa soccer fields have been constructed, Kapaʻa Town Park should be reoriented to passive use, an outdoor gathering place that complements and enhances the historic commercial area.

• Continue to improve the neighborhood parks. Among the project included in this master plan: a

new pavilion and renovation of the comfort station at Kapahi Park, rehabilitation of the sports fields at Anahola Hawaiian Homes Park, resurfacing of the tennis courts at Wailua Homesteads Park and Wailua Houselots Park, and construction of a pavilion and internal walking path at Wailua Homesteads Park.

- Develop Gore Park as a passive park to provide a rest area at the top of the Kawaihau spur for Ke Ala Hele Makalae.
- A future section of Ke Ala Makalae is aligned along the Waipouli drainage canal. A long-term proposal is to use the canal itself for non-motorized water recreation, such as canoeing, kayaking, and stand-up paddle boarding.

Figure 23 shows proposed improvements for parks and recreation facilities in Kawaihau District.

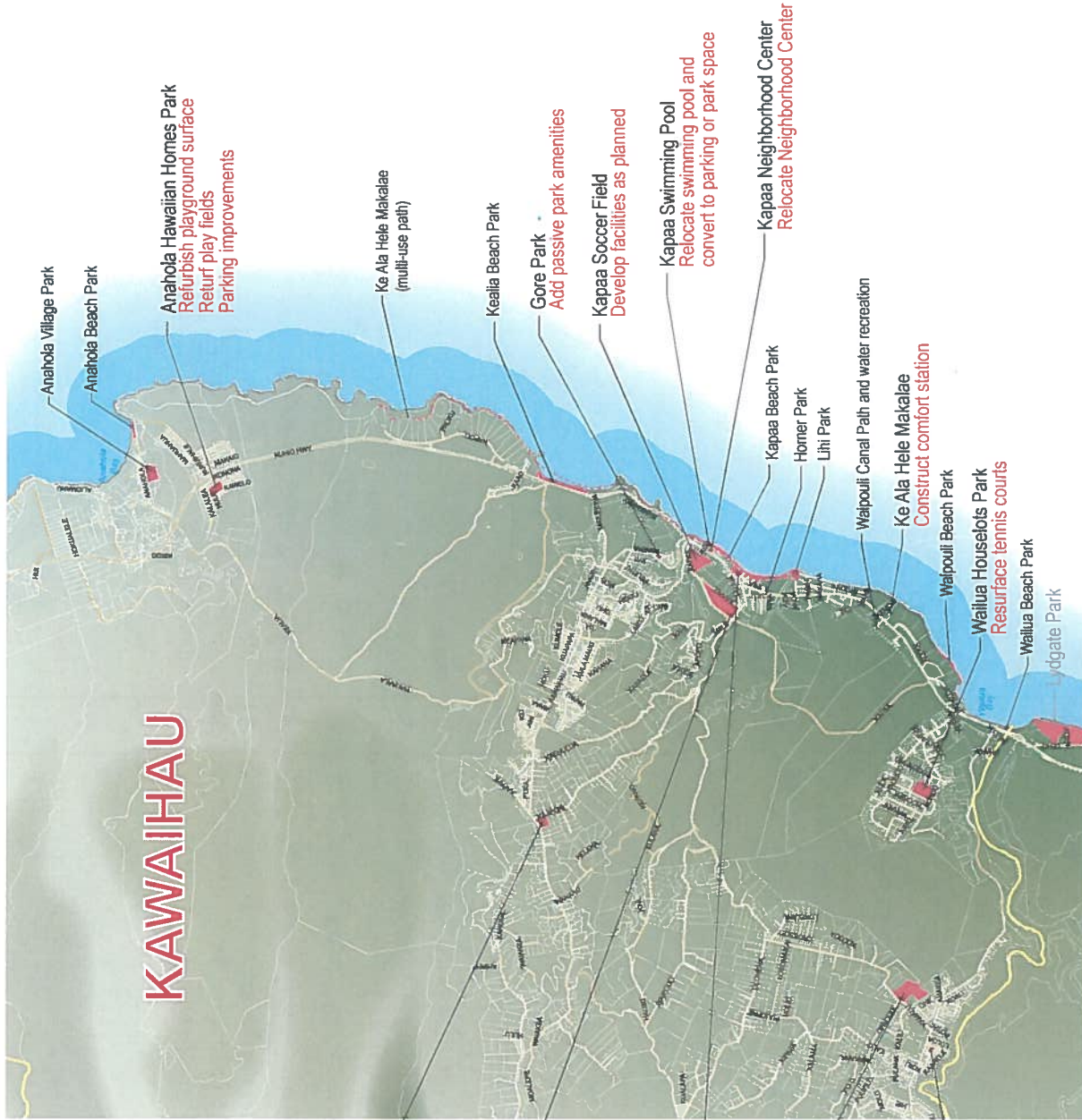


FIGURE 23

**KAWAIHAU DISTRICT PROPOSED IMPROVEMENTS**

0 6000 12,000 FEET

Kaua'i Parks & Recreation Master Plan • County of Kaua'i Department of Parks & Recreation • 2013



## Kawaihau District Parks and Recreation Facilities

### Anahola Beach Park

**Type:** Beach Park  
**TMK:** 4-8-014: 006  
**Area:** 1.5 acres

**Facilities:** Lifeguard station, comfort station, picnic tables, grills. Campgrounds closed every Thursday.



*Anahola Beach Park*

### Anahola Hawaiian Homes Park and Clubhouse

**Type:** Neighborhood Park  
**TMK:** 4-8-020: 067  
**Area:** 4.9 acres

**Facilities:** Anahola Clubhouse, youth baseball field, basketball court, football practice field, playground equipment

**Projects Underway:** Resurfacing of the basketball court is currently in progress. A project to resurface the playground and repair play equipment is in the CIP. There is another budgeted item to provide ADA parking stalls for the clubhouse parking area and install a drainage swale.

**Other Proposed Improvements:** To further improve parking conditions and mitigate erosion and dust issues, this master plan proposes that the parking area be paved with semi-permeable material. The playing fields are proposed for re-turfing to eliminate bare patches and improve playing conditions throughout the park.



*Anahola Hawaiian Homes Park and Clubhouse*

### Anahola Village Park

**Type:** Neighborhood Park  
**TMK:** 4-8-009: 001  
**Area:** 7.0 acres

**Facilities:** Basketball court, lighted playground, open field with portable soccer goals, pavilion, comfort station



*Anahola Village Park*

### Gore Park

**Type:** Passive Park  
**TMK:** 4-6-029: 001  
**Area:** 0.7 acre

**Facilities:** Passive beautification park

**Proposed Improvements:** Gore Park is a triangular-shaped parcel on Kawaihau Road near Mahelona Hospital. The park is an open grassy area ringed by shower trees and croton bushes and chain link fencing. The Kawaihau spur of the Ke Ala Hele shared use path will terminate near Gore Park. The addition of park furniture, including benches, picnic tables, water fountain, and trash receptacles, will enable greater use of this park space.



*Gore Park*

### Horner Park

**Type:** Passive Park

**TMK:** 4-5-007: 005

**Area:** 0.2 acre

**Facilities:** Kapa 'a Town sign, passive beautification park



*Horner Park*

### Kapa'a Beach Park

**Type:** Beach Park

**TMK:** 4-5-007:001; 4-5-008: 001; 4-5-011: 001 and 045;

4-5-012: 001; 4-5-013: 001

**Area:** 12.0 acres

**Facilities:** Beach volleyball, bike/pedestrian path, play-ground equipment, comfort station, pavilion, picnic tables

**Proposed Improvements:** see Kapa 'a Town Park



*Kapa'a Beach Park*

### **Kapa'a Neighborhood Center**

**Type:** Neighborhood Center

**TMK:** 4-5-012: 015

**Area:** 0.8 acre

**Facilities:** Multi-purpose rooms with kitchen, administrative office

**Projects Underway:** Resurfacing of the parking lot for the neighborhood center and pool is expected to occur in 2014.

**Other Proposed Improvements:** The neighborhood center is proposed for eventual relocation to an expanded Kapa'a New Park recreational complex or other location. The original center would then serve as an auxiliary facility.



*Kapa'a Neighborhood Center*

### **Kapa'a Swimming Pool**

Also known as Louie "Smokey" Gonsolves Kapa'a Memorial Swimming Pool

**Type:** Special Use Area

**Facilities:** Swimming pool, dressing/locker room and showers

**Proposed Improvements:** The long-term proposal is to relocate the swimming pool to an expanded Kapa'a New Park recreational complex or other location.



*Kapa'a Swimming Pool*

## Kapa'a New Park

**Type:** District Park

**TMK:** 4-5-015: 032

**Area:** 18.0 acres

**Facilities:** Lighted football field, football locker room, lighted basketball court, two baseball fields (one lighted), youth baseball field, lighted tennis courts, lighted in-line hockey rink, skateboard park, comfort stations, pavilion, picnic tables

**Projects Underway:** A project to renovate the football locker room/showers and field is in the current CIP. A separate project in the CIP will convert lights to a timer-based system together with the installation of shielded lamps to mitigate lighting impacts on seabirds.

**Other Proposed Improvements:** The existing Kapa'a Neighborhood Center and swimming pool are proposed for relocation. One option being considered is to relocate these facilities to Kapa'a New Park, which is envisioned as the nucleus of an expanded district park serving East Kaua'i (see Figure 24). Kahau Road would be extended to connect Kapa'a New Park with the future soccer fields. The extension would require a bridge spanning Mo'ikeha Canal. A new gym is proposed north of the youth baseball field. Based on conceptual planning, this site is large enough for a multi-purpose gym that could contain a tournament basketball or volleyball court with bleachers (or 2-3 practice or league play courts), restrooms and lockers, and administrative offices.

A new neighborhood center, including youth center,



*Kapa'a New Park*

senior center, and meeting rooms for community activities, is sited south of the County baseyard and makai of the youth baseball field. A new swimming pool, replacing the existing Kapa'a Swimming Pool, would also be constructed on this site. The new neighborhood center would require acquisition or use of land that is owned by the Department of Hawaiian Home Lands and proposed for future town center development. As a social hub, a neighborhood center would be beneficial for this type of development.

To support the new facilities, additional parking lots would be provided in front of the proposed neighborhood center, adjacent to the youth baseball field, and south of Mo'ikeha Canal.

An option, shown in the concept site plan, is to reorient ballfields so that home base and the spectator bleachers are closer to the parking areas.

Final relocation sites for the neighborhood center and swimming pool would be selected after more detailed planning and environmental studies.



*Kapa'a New Park*

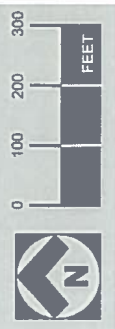


This concept site plan is an illustrative example only. Land acquisition would be required.

FIGURE 24

KAPAA NEW PARK CONCEPT SITE PLAN

Kauai Parks & Recreation Master Plan • County of Kauai Department of Parks & Recreation • 2013



## Kapa'a Soccer Fields

**Type:** District Park

**TMK:** 4-5-015: 036

**Area:** 11.5 acres

**Facilities:** Soccer, off street parking, comfort station

**Proposed Improvements:** The soccer field site is located north of and adjacent to Moikeha Canal. This project has a separate master plan and has completed the environmental review process. Once implemented, the site will include two soccer fields (one regulation sized field and one youth field), a comfort station, and parking lot.



*Kapa'a Soccer Fields*

### Kapa'a Town Park

**Type:** Neighborhood Park

**TMK:** 4-5-011: 006

**Area:** 2.8 acres

**Facilities:** Open field used for soccer practice and football practice

**Proposed Improvements:** The long-term vision for Kapa'a Town Park is to reorient the park to passive uses (see Figure 25). The park is located in the heart of the Kapa'a historic and commercial district. As a passive park, it would serve as a gathering place with benches and landscaping offering shade, a children's play area, and new comfort station. As shown in the preliminary concept plan, there is a central open space for festivals and markets. The park is also intended as a public corridor between the town and the beach with paths facilitating an easy stroll between the two. Kapa'a Town Park could become a venue for public performances with an amphitheater providing a casual open air setting and the ocean as a backdrop.



*Kapa'a Town Park*





This concept site plan is an illustrative example only.

FIGURE 25

### KAPAA TOWN PARK CONCEPT SITE PLAN

Kauai Parks & Recreation Master Plan • County of Kauai Department of Parks & Recreation • 2013



### Kapahi Park

**Type:** Neighborhood Park

**TMK:** 4-6-011: 004

**Area:** 4 acres

**Facilities:** Youth baseball field, open field with portable soccer goals, basketball court, playground equipment, comfort station, picnic tables, drinking fountain

**Proposed Improvements:** Although classified as a neighborhood park, Kapahi Park serves a large mauka community. Proposed improvements at this park include rehabilitation of the comfort station, a pavilion, and improvement of the parking area along the periphery of the park.



*Kapahi Park*

### Ke Ala Hele Makalae

**Type:** Linear Park

Ke Ala Hele Makalae (or “path that goes along the coast”) is a shared path for walkers, joggers, skaters, bicyclists, and people using other forms of non-motorized transportation. The path is conceived as a travel way extending from Anahola in the north to Nāwiliwili in the south and covering a distance of more than 26 miles through Kawaihau and Līhu‘e Districts. Ke Ala Hele Makalae is a linear park in its own right, supporting a variety of recreational activities and enjoyment of the coastline. It is also a transportation corridor connecting a string of beach parks and providing access to numerous swimming, surfing, and fishing spots.



*Ke Ala Hele Makalae--Wailua*

### **Kapa 'a (Lihī Park) to Keālia**

**Length:** approximately 4.1 miles

The Kapa 'a to Keālia leg opened in 2009. It begins at Lihī Park in the south and, heading north, passes through Kapa 'a Beach Park and Keālia Beach Park, ending at Kuna Bay. Facilities along the way include comfort stations, small pavilions with picnic tables, and drinking fountains. The path intersects with a Hawai'i Department of Transportation scenic point off Kuhio Highway that overlooks Keālia Beach. Dogs on leashes are allowed on the path and doggie bag stations are located at intervals along the path.



*Ke Ala Hele Makalae--Keālia*

### **Lydgate Park to Kapa 'a (Lihī Park)**

**Length:** approximately 2.1 miles

This section connects Lydgate Park and Lihī Park. Construction of the Lydgate Park to Kapa 'a leg began with a new bike and pedestrian bridge over Wailua River built as a cantilevered attachment to the reconstructed cane haul road. In 2013, additional sections were completed along Wailua Beach and, further north, along the coastal stretch known as Fuji Beach or Baby Beach on the way to Lihī Park. Remaining sections include a connector along the Waipouli coast and the Kawaihau spur which ends near Gore Park.



*Ke Ala Hele Makalae--Kapa 'a*

### Keālia Beach Park

**Type:** Beach Park  
**TMK:** 4-7-003: 001  
**Area:** 7.2 acres

**Facilities:** Small pavilions with picnic tables, lifeguard station, comfort station, bike/pedestrian path



*Keālia Beach Park*

### Lihi Park

**Type:** Beach Park  
**TMK:** 4-5-002: 001  
**Area:** 2.6 acres

**Facilities:** Lihi Park was improved with a new comfort station, upgraded parking area, and landscaping as part of the bike/pedestrian path project



*Lihi Park*

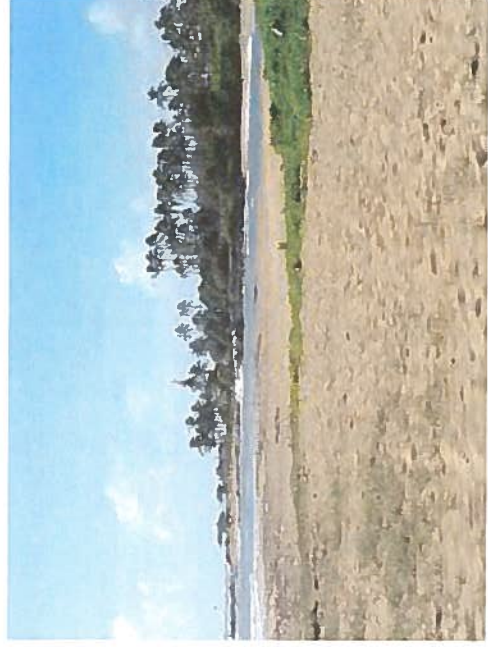
### Wailua Beach Park

**Type:** Beach Park

**TMK:** 4-4-005: 004, 4-4-004: 001, 020

**Area:** 5.1 acres

**Facilities:** Outdoor shower, port-a-potties, informational signs



*Wailua Beach Park*

### Wailua Homesteads Park

**Type:** Neighborhood Park

**TMK:** 4-2-003: 018

**Area:** 16.6 acres

**Facilities:** Youth baseball field, open fields with portable soccer goals, lighted tennis courts, basketball courts, playground equipment, comfort station with adjoining patio, picnic tables and benches

**Projects Underway:** A portion of the park will be designated as an off-leash dog park with fencing and pet-friendly entrances. This project is a budgeted item in the current CIP.

**Other Proposed Improvements:** A new pavilion is proposed to supplement the small patio and improvements for the children's play area. A walking path is proposed around the perimeter of the park. Resurfacing is proposed for the tennis courts.



*Wailua Homesteads Park*

### Wailua Houselots Park

**Type:** Neighborhood Park  
**TMK:** 4-1-016: 042  
**Area:** 10 acres

**Facilities:** Softball field, open playfields with portable soccer goals, lighted tennis courts, basketball courts, comfort station with adjoining pavilion

The children's playground was resurfaced recently.

**Other Proposed Improvements:** Resurfacing is proposed for the tennis courts.



Wailua Riverview Park

### Wailua Riverview Park

**Type:** Neighborhood Park  
**TMK:** 4-2-012: 068  
**Area:** 0.9 acres

**Facilities:** Undeveloped park land; no public facilities currently available



Wailua Houselots Park



*Waipouli Beach Park*

### **Waipouli Beach Park**

**Type:** Beach Park

**TMK:** 4-3-002: 001

**Area:** 6.4 acres

**Facilities:** Undeveloped, no public facilities currently available

**Proposed Improvements:** A portion of the Lydgate Park to Kapa'a bike and pedestrian path (Phase D) is planned for the upland area of the County's beach reserve at Waipouli. This project is currently in the environmental review phase.

Chapter

# 6



**LĪHU'E DISTRICT**



**LIHU'E DISTRICT**

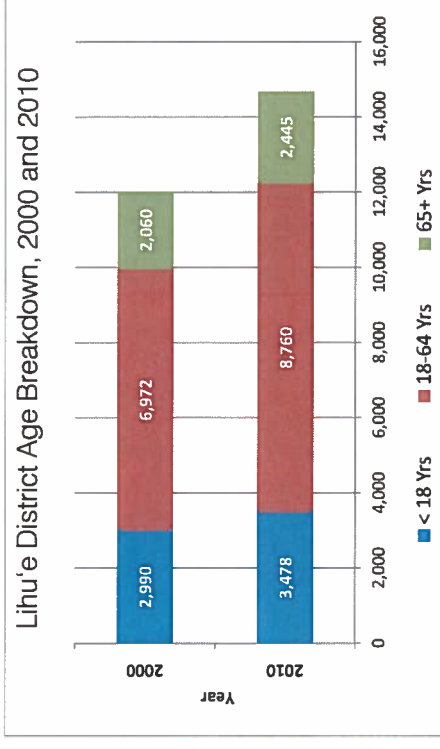
Līhu'e District in central Kaua'i extends from Wailua River to Hā'upu Ridge. The district includes Līhu'e, the County's business, government, and transportation center, and the home of major institutions, such as Wilcox Memorial Hospital and Kaua'i Community College. Neighborhoods around Līhu'e include Hanamā'ulu to the north and Puhi to the west. The island's main air and sea ports, Līhu'e Airport and Nāwiliwili Harbor are located within the district.

The district is located on a flat section of Kaua'i known geologically as the Līhu'e depression. This flatness, together with climatic conditions, created rich layers of topsoil which historically made the area suitable for productive agricultural activity.

Līhu'e District is currently the third largest planning district with 14,683 residents in 2010. The Līhu'e-Hanamā'ulu area has the potential to experience significant population growth in the future. There are approximately 273 acres zoned for residential use that is not yet developed. If this acreage is developed according to the existing master plan, a total of 1,400 to 2,470 residential units of varying densities will be developed. Depending on which build-out scenario comes to fruition, the estimated population increase could range from 3,850 to 6,769 residents.

**District Profile at a Glance**

Resident Population	
1990	10,656
2000	12,022
2010	14,683
Net change 1990-2000	1,366
Percent change 1990-2000	12.8%
Net change 2000-2010	2,661
Percent change 2000-2010	22.1%
Net change 1990-2010	4,027
Percent change 1990-2010	37.8%



Households	
Number of households in 2010	4,728
Households with persons under 18 years	1,753
Households with persons 65 + years	1,727
Households with three or more generations	499
Average household size	2.67-3.23*
Visitor Accommodations	
Number of visitor units in 2010	1,621

\* The U.S. Census Bureau provides average household size data for census tracts. There are two census tracts in the Līhu'e District with average household size as follows: Līhu'e 2.67 and Hanamā'ulu-Puhi 3.23.

Source: All data from U.S. Census Bureau, 2010 U.S. Census, except for data on visitor units from the 2011 Visitor Plant Inventory, Hawai'i Tourism Authority

**Existing County Parks and Recreation Facilities**

**Table 23** Table 23 lists the existing parks and recreation facilities. Locations are shown in Figure 26.

**Parks Inventory for Lihue District**

Park Name	Type	Undeveloped	Passive	Acreage by Park Type								
				Neighborhood Park	District Park	Regional Park	Beach Park	Llinear Park	Special Use Area	Total Acres		
Ahukini Coastal Park	Beach	X					138.1					
Hanamaulu Beach Park	Beach						6.46					
Hokulei Park	Neighborhood			1.99								
Isenberg Park and Lihue NC	District			9.16								
Kalena Park	Neighborhood			1.33								
Ke Ala Hele Makalae-Ahukini to Lydgate Park	Linear	X						7.27				
Ke Ala Hele Makalae-Nawiliwili to Ahukini	Linear	X						unknown				
Laukona Park	Neighborhood			2.59								
Lihue District Park	District				2.68							
Lihue Tennis Courts	Special Use Area									1.10		
Lydgate Park	Regional					33.05						
Molokoa Park	Regional (expansion)	X				5.00						
Molokoa Park Expansion	Regional (expansion)	X				4.90						
Nawiliwili Park	Beach						6.28					
Niimalu Park	Beach						3.65					
Palani Park	Neighborhood	X		1.00								
Peter Rayno Park	Neighborhood			3.60								
Pua Loke Park	Neighborhood			0.63								
Puhi Park	Neighborhood			2.91								
Puhi Subdivision Park	Neighborhood			4.38								
Ulu Ko Park	Neighborhood			4.00								
Vidintha Stadium	Regional					35.50						
Wailua Golf Course	Special Use Area									107.40		
War Memorial Convention Hall	Special Use Area									9.04		
Wiiko Park	Neighborhood			2.28								
<b>Lihue-Developed Acres</b>				<b>32.85</b>	<b>2.68</b>	<b>68.55</b>	<b>16.38</b>			<b>117.55</b>	<b>238.00</b>	
<b>Lihue-Undeveloped Acres</b>				<b>1.00</b>		<b>9.90</b>	<b>138.10</b>	<b>7.27</b>		<b>0.00</b>	<b>156.27</b>	
<b>Lihue-Total Acres</b>			<b>0.00</b>	<b>33.85</b>	<b>2.68</b>	<b>78.44</b>	<b>154.48</b>	<b>7.27</b>		<b>117.55</b>	<b>394.27</b>	

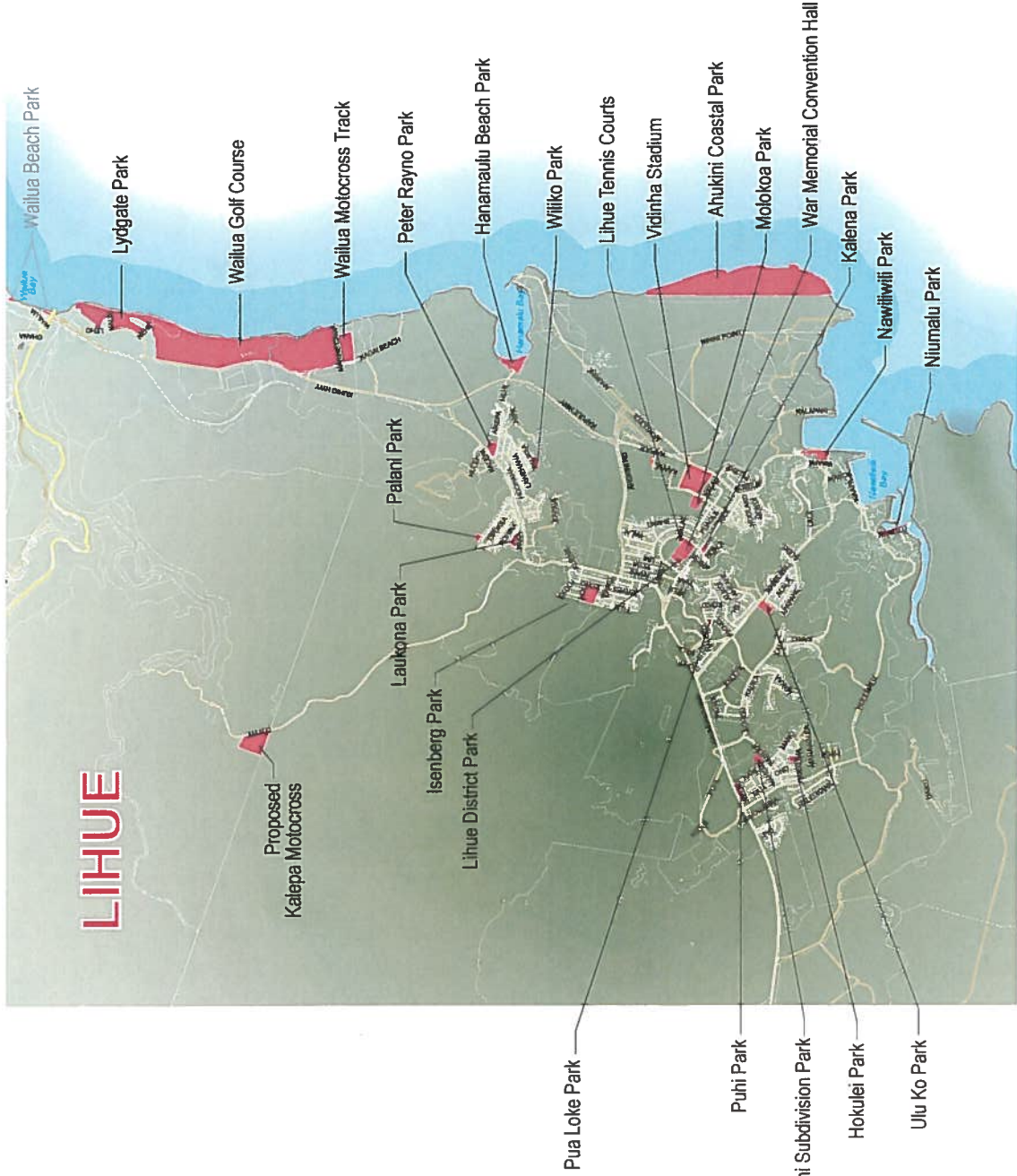


FIGURE 26

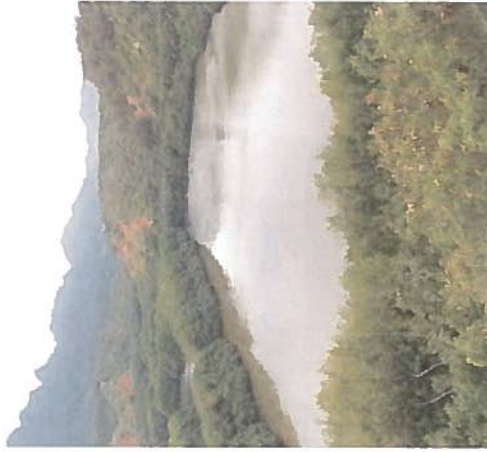
# LIHUE DISTRICT EXISTING PARKS & RECREATION FACILITIES

Kauai Parks & Recreation Master Plan • County of Kauai Department of Parks & Recreation • 2013



**Non-County Park and Recreation Facilities**

- Kalepa Forest Reserve and mauka trails
- Ahukini State Recreation Pier
- Boys and Girls Club of Kaua'i, Līhu'e Clubhouse
- Puhi YMCA Pool
- Nāwiliwili Small Boat Harbor
- Alekoko (Menehune) Fishpond
- Huleia National Wildlife Reserve



**Table 24**  
User Survey:  
Leisure Activities

Activity	Līhu'e District
Walk, Jog, Run	46
Swim, Surf, Beach	33
Picnic	31
Party	26
Bike	23
Fish	21
Camp	19
Tennis	19
Fitness Aerobics	16
Baseball Softball	14
Skate	14
Basketball	13
Arts and Craft	11
Swim Pool	11
Football	9
Soccer	8
Volleyball	8
Hula Dance	7
Bowling	6
Golf	6
Horse Riding	6
Motorcycle ATV	6
Playground	4
Roller Hockey	3
Marital Arts	2
Weights	2





**Park Service Areas**

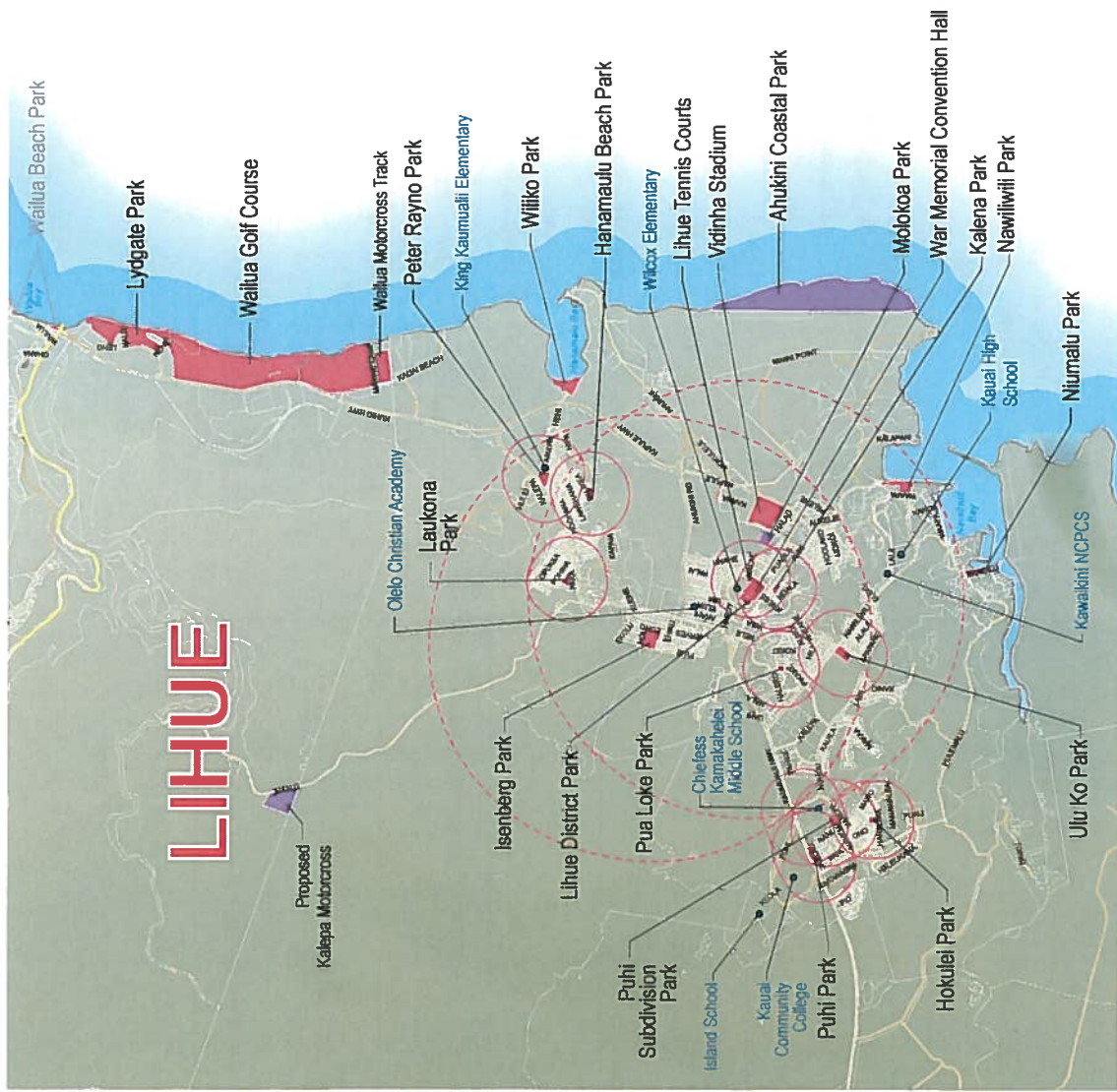
Līhu'e District has the largest park acreage which is appropriate given its central location. Figure 27 shows existing parks with a 0.5 mile service radius around neighborhood parks and a 3 mile radius around district parks. Because the development of Līhu'e, Hanamā'ulu, and Puhi has taken a compact urban form, the park service areas encompass most of the core residential areas. Park dedication requirements have resulted in neighborhood parks well-integrated into new subdivisions, such as Wiliko Park, Ulu Ko Park, Hokulei Park, and Puhi Subdivision Park.

**Input from the Park User Survey**

Table 24 lists leisure activities that are popular among Līhu'e District residents, as reported in the user survey. Table 25 lists the types of facilities they would like to see added to the district's parks.

**LEGEND**

-  Neighborhood Park (½ mile radius)
-  District Park (3 mile radius)
-  Existing Park
-  Undeveloped Park



**LIHUE DISTRICT PARK SERVICE AREAS**

Kaua'i Parks & Recreation Master Plan • County of Kaua'i Department of Parks & Recreation • 2013

FIGURE  
**27**

**Table 25**  
User Survey: Priorities for New Park Facilities

What recreational facilities should be added by the County to meet your needs? (Aggregated Count)	Lihue District
Walking and bicycling paths	15
Skate parks	14
Recreation beaches	13
Indoor gyms and fitness facilities	11
Tennis courts	11
Camping facilities	10
Dog parks (off-leash)	9
Picnic facilities and pavilions	9
Passive (leisure) parks	8
Children's playground	7
Community recreation centers	7
Baseball/softball fields	6
Senior recreation centers	2
Swimming pools	2
Football fields	1
Multi-sport facility that supports roller derby	1
Multi-use regional parks	1
Outdoor racetrack courts	1
Public rubberized walking track with distance markers	1
Roller derby/roller skating rink	1
Volley Courts (gym)	1
Volleyball Courts (beach)	1
Volleyball Courts (hardcourts)	1

**Master Plan Recommendations for the Lihue District**

- A new comfort station is proposed for the soccer complex at Lydgate Park. During busy practice periods or game days, there could be dozens of players and spectators, many of whom are young children. The complex would function more effectively with restroom facilities close by. Another proposal is to establish an organized parking scheme with marked stalls.
- An auxiliary comfort station is also proposed for the Lydgate Park group campsite which opened recently.
- The existing motocross track located south of Waihua Golf Course is expected to relocate to the Kalepa foothills. When this occurs, the vacated area is proposed for a nine-hole youth golf course.
- The outdoor lighting system at Hanamā'ulu Beach Park is proposed for repair or replacement to improve surveillance and security and to help restore its popularity as a family-oriented park. The closed comfort station at the north end of the park is proposed for reconstruction.
- Ahukini Coastal Park was recently acquired by the County. It is proposed for low-intensity development in keeping with the natural beauty of this open space. The park would be served by the proposed Ahukini-to-Lydgate Park leg of Ke Ala Hele Makalae.
- Vidinha Stadium is proposed as the centerpiece for

a regional scale park. The Stadium features the island's largest football arena and a high-quality rubberized running track. There is an existing facility master plan for Vidinha Stadium which calls for the construction of a gym, swimming pool, and tennis court complex. Additional concept plans were developed to consider options for relocating the soccer fields and including other types of recreation facilities on the site: an expanded aquatic center, additional meeting rooms and indoor recreation spaces (youth center and senior center), a special events pavilion, and a skate park. Further planning is needed to determine the best course of action for this key site in light of the County's current recreation needs.

- The War Memorial Convention Hall is an important venue for civic and community events. To address the size limitation of the exhibition hall, this master plan proposes to enclose some of the exterior spaces and provide a large storage area. Parking is another constraint that is addressed through a proposal to reorganize and incrementally expand the parking lot, or to add a second level parking deck.
- Improvements to a number of neighborhood parks are proposed, including: pavilion at Peter Rayno Park; comfort station and children's play equipment at Wiiliko Park; internal walking path and play equipment at Laukona Park; tot lot at Pua Loke Park; and replacement of play equipment at Puhi Park and Hokulei Park.
- New turf and an irrigation system were recently installed at Ulu Ko Park; however, the park remains

an open field. Two conceptual layouts were prepared for this master plan showing considerable potential in developing an attractive neighborhood park. A final plan should be developed with community involvement.

- A new children's play area is proposed at Niimalu Beach Park to replace play equipment that was removed several years ago due to deterioration. The pavilion and restroom structure is also exhibiting signs of deterioration and should undergo rehabilitation.
- Improvements will be made to Nawiliwili Park as part of the Ke Ala Hele Makalae path project.

Figure 28 shows proposed improvements for parks and recreation facilities in Lihue District.

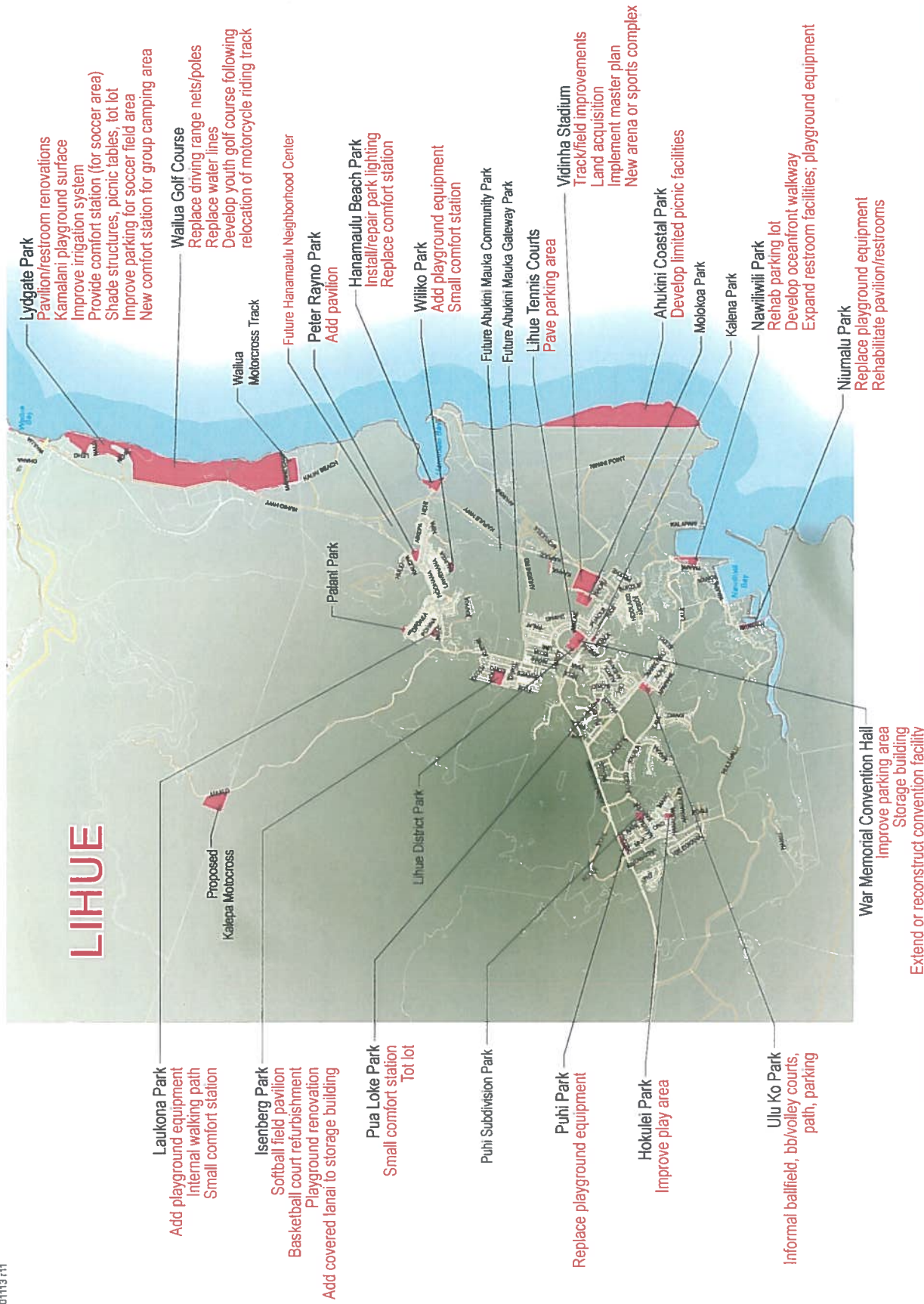


FIGURE  
**28**

**LIHUE DISTRICT PROPOSED IMPROVEMENTS**

0 6000 12000  
FEET

Kauai's Parks & Recreation Master Plan • County of Kauai's Department of Parks & Recreation • 2013



## Līhu'e District Parks and Recreation Facilities

### Ahukini Coastal Park

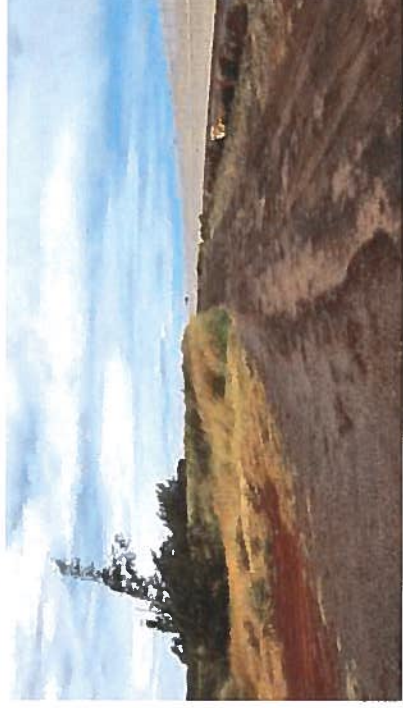
**Type:** Beach Park

**TMK:** 3-5-001: 102

**Area:** 138.1 acres

**Facilities:** Undeveloped; no public facilities currently available

**Proposed Improvements:** Ke Ala Hele Makalae, the bike and pedestrian path, will traverse the entire length of Ahukini Coastal Park. Although the planned alignment is not directly on the coastline, it will facilitate access to shore fishing areas and beachside pavilions that are proposed. The future park is expected to remain largely undeveloped and oriented to passive recreation use with a few landscaped pockets for picnicking. Support facilities would include comfort station(s) and a service road (see Figure 29).



*Ahukini Coastal Park*

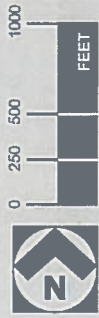


This concept site plan is an illustrative example only.

# AHUKINI COASTAL PARK CONCEPT SITE PLAN

Kauai Parks & Recreation Master Plan • County of Kauai Department of Parks & Recreation • 2013

FIGURE  
**29**



**Hanamā‘ulu Beach Park**

**Type:** Beach Park  
**TMK:** 3-7-003: 008  
**Area:** 6.5 acres

**Facilities:** Tent and mobile camping, pavilion, comfort station, outdoor showers, playground equipment, picnic tables, grills, drinking fountain. Campground open Thursday, Friday, and Saturday only, and on school holidays.

**Proposed Improvements:** The original comfort station in the northern area of the park has been unusable for a number of years and is proposed for replacement. Additionally, installation and/or repair of park lighting is proposed to support greater community use of the park and to aid in surveillance and policing.



*Hanamā‘ulu Beach Park*

**(Future) Hanamā‘ulu Neighborhood Center**

**Type:** Neighborhood Center  
**TMK:** Vicinity of “Hanamā‘ulu Triangle,” specific site not yet determined

**Proposed Improvements:** A one-acre site for a neighborhood center was reserved within the future residential subdivision called Kohea Loa, according to the Lihū ‘é-Hanamā‘ulu Master Plan<sup>1</sup> prepared by Haili Moe, Inc. (May 2007). The site is located makai of King Kaunualii Elementary School, in the area known as the Hanamā‘ulu Triangle. More detailed planning for the neighborhood center would be contingent on development of the Kohea Loa subdivision, which is currently owned by developer D.R. Horton.



*Hanamā‘ulu Beach Park*

<sup>1</sup>Park master plan was prepared in compliance of Condition 7 of County of Kaua‘i Ordinance No. PM-326-96, which granted zoning amendments for the Lihū ‘é-Hanamā‘ulu Master Plan.

### Hokulei Park

**Type:** Neighborhood Park

**TMK:** 3-3-014: 126

**Area:** 2.0 acres

**Facilities:** Open playground, playground equipment, paved walkway

**Projects Underway:** Funding for replacement of the existing fence is included in the current CIP. Although a different type of fence material may be used, the fencing serves an important function in defining the park boundary and providing a buffer between activities within the park and the surrounding streets.

**Other Proposed Improvements:** The playground equipment at Hokulei Park is proposed for replacement.



Hokulei Park

### Isenberg Park

Co-located with Lihue Neighborhood Center

**Type:** Neighborhood Park

**TMK:** 3-8-015: 024

**Area:** 9.2 acres

**Facilities:** Lihue Neighborhood Center, lighted softball field, batting cage, football practice field, open playground, lighted basketball courts, playground equipment, comfort station, pavilion, picnic tables, grill, lighted paved parking lot

**Projects Underway:** Improvements to the comfort station were completed recently. Resurfacing of the basketball court and playground, and repairs to play equipment are expected to occur in 2014. The County will be furnishing materials for a community build project to construct a new softball field pavilion.

**Other Proposed Improvements:** A covered lanai addition to the storage building is recommended to provide shelter in the vicinity of the basketball courts.



Isenberg Park

### Kalena Park

**Type:** Neighborhood Park

**TMK:** 3-6-009: 038

**Area:** 1.3 acres

**Facilities:** Basketball court, playground equipment, comfort station, pavilion, picnic tables, water fountain



*Kalena Park*

### Laukona Park

**Type:** Neighborhood Park

**TMK:** 3-8-013: 110

**Area:** 2.6 acres

**Facilities:** Basketball court, open playground, playground equipment

**Projects Underway:** Resurfacing of the basketball court is currently in progress

**Other Proposed Improvements:** Playground equipment at Laukona Park consists of a set of monkey bars. This master plan proposes that a more extensive children's play area be constructed within the park, including a structure that offers more varied play opportunities. Also proposed are a small comfort station, and a walking path around the park to promote a healthy lifestyle.



*Laukona Park*

**Līhu'e-Hanamā'ulu Master Plan Parks**

In 2007, developer Haiii Moe, Inc. submitted a parks plan to supplement its Līhu'e-Hanamā'ulu Master Plan and to fulfill a condition of the zoning amendments approved by the County of Kaua'i. The master plan covers a project area of approximately 550 acres located east of the Līhu'e urbanized area and north of Līhu'e Airport. Proposed land uses include single-family detached homes, townhouses, multi-family units, commercial and office centers, and parks. Based on the land use plan, build-out scenarios range from 3,850 residents to 6,769 residents.

The parks plan identifies 17.2 acres of park land that would be dedicated to the County. Excluding 1.2 acres that constitute the Kaua'i Gateway beautification areas, the following lands are set aside for park and play-ground purposes:

<b>MOLOKOA</b>	
Molokoa Park expansion	4.9 ac.
<b>AHUKINI MAUKA</b>	
Gateway Park	3.8 ac.
Community Park	5.8 ac.
Mini Park	0.5 ac.
<b>KOHEA LOA (Hanamā'ulu Triangle)</b>	
Hanamā'ulu Park	1.0 ac.

**Līhu'e Tennis Courts**

**Type:** Special Use Area  
**TMK:** 3-6-002: 010  
**Area:** 1.1 acres

**Facilities:** Lighted tennis courts

**Proposed Improvements:** The parking area for the tennis courts is unpaved, except for the accessible parking stalls. This master plan proposes that the parking area be paved with semi-permeable material to mitigate dust and erosion issues. Parking improvements for the tennis courts may be implemented in conjunction with a larger proposal to expand parking at the War Memorial Convention Hall and optimize circulation.



Līhu'e Tennis Courts

**Līhu'e Neighborhood Center**

Co-located with Isenberg Park

**Type:** Neighborhood Center

**TMK:** see Isenberg Park

**Facilities:** Multi-purpose rooms with kitchens, rest-rooms, administrative offices



*Līhu'e Neighborhood Center*

**Līhu'e District Park**

also known as Līhu'e County Park, Līhu'e Public Park, and Līhu'e Little League Fields

**Type:** District Park

**TMK:** 3-6-002: 003

**Area:** 2.7 acres

**Facilities:** Quadplex of four Little League and PONY fields, batting cage, picnic tables, comfort station, drinking fountain



*Līhu'e District Park*



*Lydgate Park*

**Lydgate Park**

**Type:** Regional Park  
**TMK:** 3-9-002: 034, 3-9-006: 001  
**Area:** 33.0 acres

**Facilities:** Tent camp sites, group campground, Kamalani playground and Kamalani play bridge, bike/pedestrian path, lifeguard station, soccer fields, large pavilion, picnic shelters and tables, comfort stations, grills. Campgrounds are closed every Tuesday and Wednesday.

**Projects Underway:** Renovations of the small pavilions were completed recently. A project to renovate the large pavilion and comfort station is in the current CIP.

**Other Proposed Improvements:** New playground surfacing is proposed for the Kamalani Playground.

The Harry and Jeanette Weinberg Sports Park has three regulation-size soccer fields that can be marked for sev-

en smaller youth fields. Although the fields are heavily used by adult and youth teams, the facility does not have its own comfort station. This master plan proposes a new, centrally located comfort station (see Figure 30), as well as shade structures, picnic tables, and a tot lot. At present, street parking around the soccer fields is haphazard, thereby reducing the number of cars that can be accommodated. To create a more orderly parking situation, this master plan proposes reverse-in angled parking along the roadway mauka of the fields. Reverse-in angled parking is appropriate because the back of vehicles—where people are loading and unloading gear—is away from the flow of traffic. Additional land and relocation of coconut trees will be required if parking is provided on the mauka side of the roadway.

Construction of an auxiliary comfort station is proposed for the recently completed group campground which has a current capacity of 200 persons.



*Lydgate Park*



090103/04 032513 14



This concept site plan is an illustrative example only. Land acquisition would be required.



# LYDGATE PARK CONCEPT SITE PLAN

Kauai Parks & Recreation Master Plan • County of Kauai Department of Parks & Recreation • 2013

## FIGURE 30

### Molokoa Park and Molokoa Park Expansion Area

**Type:** (see Vidinha Stadium)

**TMK:** 3-6-002: 023; expansion area does not have a separate TMK

**Area:** 5.0 acres + 4.9 acres

**Facilities:** Undeveloped land; no public facilities currently available

**Proposed Improvements:** See Vidinha Stadium

### Nāwiliwili Park

**Type:** Beach Park

**TMK:** 3-2-004: 003

**Area:** 6.3 acres

**Facilities:** Open playfield, comfort station, picnic tables

**Proposed Improvements:** The Nāwiliwili to Ahukini leg of Ke Ala Makalae, the bike and pedestrian path, is currently in the planning stage. In addition to the path, the scope of this project includes improvements originally contained in the Nāwiliwili Waterfront Park Master Plan. These improvements will include a promenade immediately inland of the seawall, a walkway around the southern perimeter of the park, picnic tables, reconstruction of the parking area, and rehabilitation of the existing comfort station.



Nāwiliwili Park



Nāwiliwili Park

## Niumalu Park

Type: Beach Park

TMK: 3-2-002: 001

Area: 3.6 acres

**Facilities:** Canoe launch, open playfield, comfort station, pavilion, picnic tables

**Proposed Improvements:** Playground equipment at Niumalu Park was removed several years ago and proposed for replacement. The pavilion and restroom structure is proposed for rehabilitation.



*Niumalu Park*



### Palani Park

**Type:** Neighborhood Park  
**TMK:** 3-8-012: 071  
**Area:** 1 acre

**Facilities:** Undeveloped land; no public facilities currently available

### Peter Rayno Park

**Type:** Neighborhood Park  
**TMK:** 3-7-003: 009  
**Area:** 3.6 acres

**Facilities:** Lighted youth baseball field, basketball court, playground equipment, comfort station, drinking fountain

**Projects Underway:** A new comfort station was completed in 2011. A follow-up project to provide materials for community volunteers to build a pavilion near the softball field is in the current CIP.



*Peter Rayno Park*

### Pua Loke Park

**Type:** Neighborhood Park  
**TMK:** 3-6-010: 054  
**Area:** 0.6 acre

**Facilities:** Basketball court, open playfield, pavilion, picnic tables, drinking fountain

**Proposed Improvements:** Playground equipment for a new tot lot and a small comfort station are proposed for Pua Loke Park.



*Pua Loke Park*

### Puhi Park

**Type:** Neighborhood Park  
**TMK:** 3-3-004: 020  
**Area:** 2.9 acres

**Facilities:** Play equipment, open playfield, picnic tables

**Proposed Improvements:** Existing play equipment at Puhi Park is outdated and proposed for replacement.



*Puhi Park*

### Puhi Subdivision Park

**Type:** Neighborhood Park  
**TMK:** 3-3-005: 008  
**Area:** 4.4 acres

**Facilities:** Softball field, basketball court, open playfield, tennis courts, playground equipment, comfort station, pavilion, picnic tables, drinking fountain

New playground equipment and ADA access improvements were constructed at Puhi Subdivision Park in 2011.



*Puhi Subdivision Park*

### Ulu Ko Park

**Type:** Neighborhood Park  
**TMK:** 3-3-009: 066  
**Area:** 4 acres

**Facilities:** Open playfield

**Proposed Improvements:** Ulu Ko Park was re-turfed and an irrigation system installed in 2010. The County will be working with neighborhood residents to determine park improvements. An additional consideration is the possible acquisition of land on Huna Kai Street to develop off-street parking and re-grade for an accessible means of access and entry. (See concept site plans in Figures 31 and 32.)



*Ulu Ko Park*



Two Outdoor Basketball Courts

Comfort Station with Playground Equipment

New Parking

Multi-Purpose Playfield with Backstop for Informal games

New Bike/ Ped Path Around Park

This concept site plan is an illustrative example only. Land acquisition would be required.

FIGURE 31

### ULUKO PARK CONCEPT SITE PLAN-Option 1

Kauai Parks & Recreation Master Plan • County of Kauai Department of Parks & Recreation • 2013





This concept site plan is an illustrative example only.

# FIGURE 32

## ULU KO PARK CONCEPT SITE PLAN-Option 2

Kauai Parks & Recreation Master Plan • County of Kauai Department of Parks & Recreation • 2013





### Vidinha Stadium

Formally known as Antone K. Vidinha Memorial Stadium; also known as Lihue Stadium

**Type:** Regional Park

**TMK:** 3-6-002: 016

**Area:** 35.5 acres

**Facilities:** Lighted football field and track facility, baseball field, soccer fields, comfort station

Renovations to the announcer's booth and dugouts were completed recently.

**Proposed Improvements:** Vidinha Stadium is proposed for expansion and the addition of facilities that would raise the level of service to a regional park. With a central location, proximity to the airport, and the island's largest stadium, Vidinha Stadium has the core elements for a major sports complex.

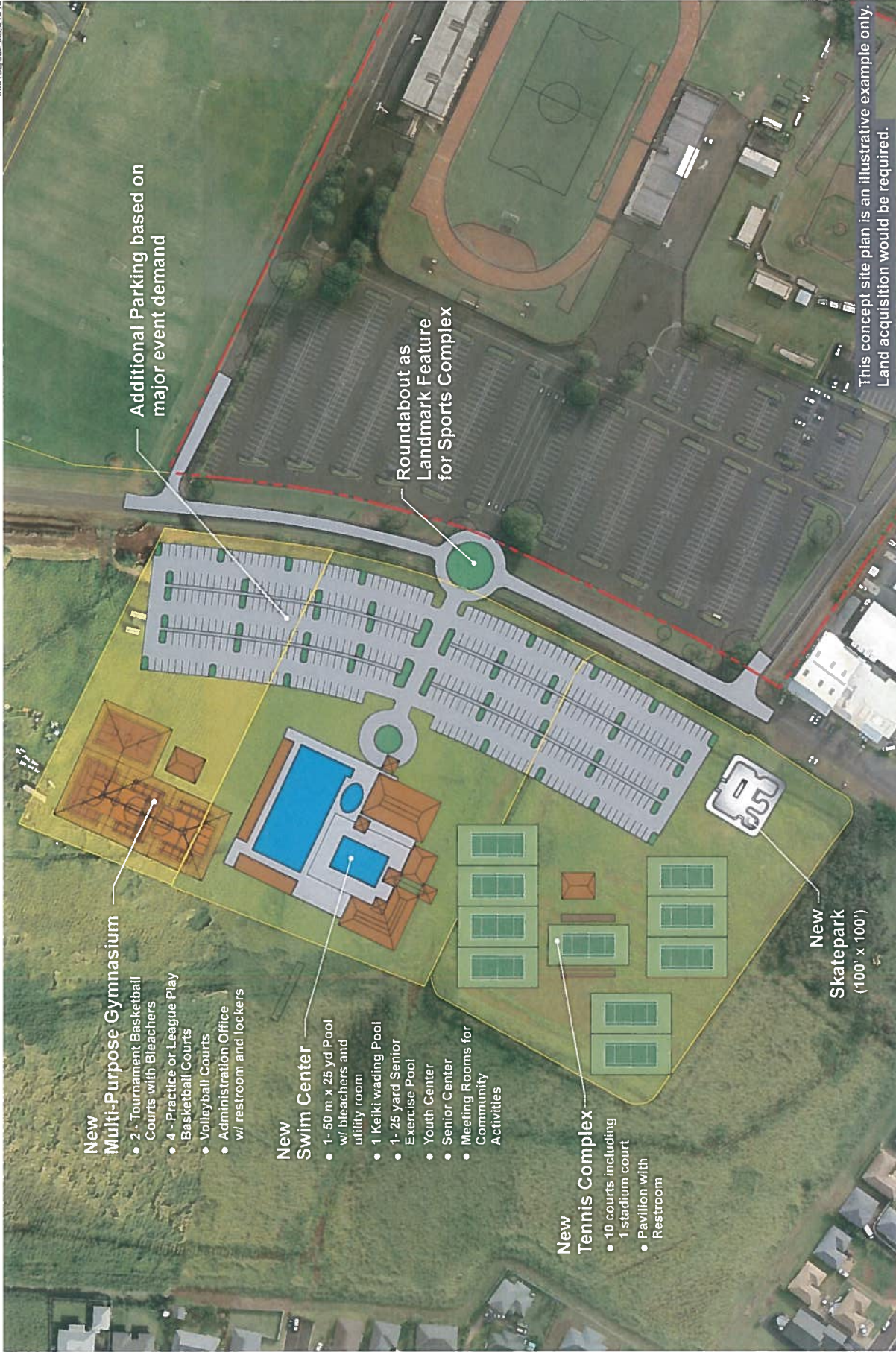
A master plan was previously prepared for Vidinha Stadium and included a gymnasium, tennis court complex, swimming pool, and expanded parking area. During the planning process for this master plan, other proposals were raised for Vidinha Stadium including an events arena, aquatics center (lap, therapy, and wading pools), youth center, senior center, multi-purpose rooms, skate park, and ballfield lighting. (See concept site plans in Figures 33, 34, and 35.)

When the Vidinha Stadium master plan was developed, new facilities were to be located on the annex site located north of the stadium. That site was subsequently converted into temporary soccer fields. However,

given the extensive use of these fields, it is evident that permanent soccer fields are needed in the Lihue area. Therefore, this master plan proposes that the area known as Molokoa Park and Molokoa Park Extension be incorporated into the Vidinha Stadium complex. In addition to these two parcels, there is a third contiguous parcel (TMK: 3-6-002: 027). The 2.5-acre site was intended for use by the YWCA, but now may be available. If these three parcels are incorporated in the Vidinha Stadium complex, the park would be expanded by approximately 12.5 acres.



*Vidinha Stadium*



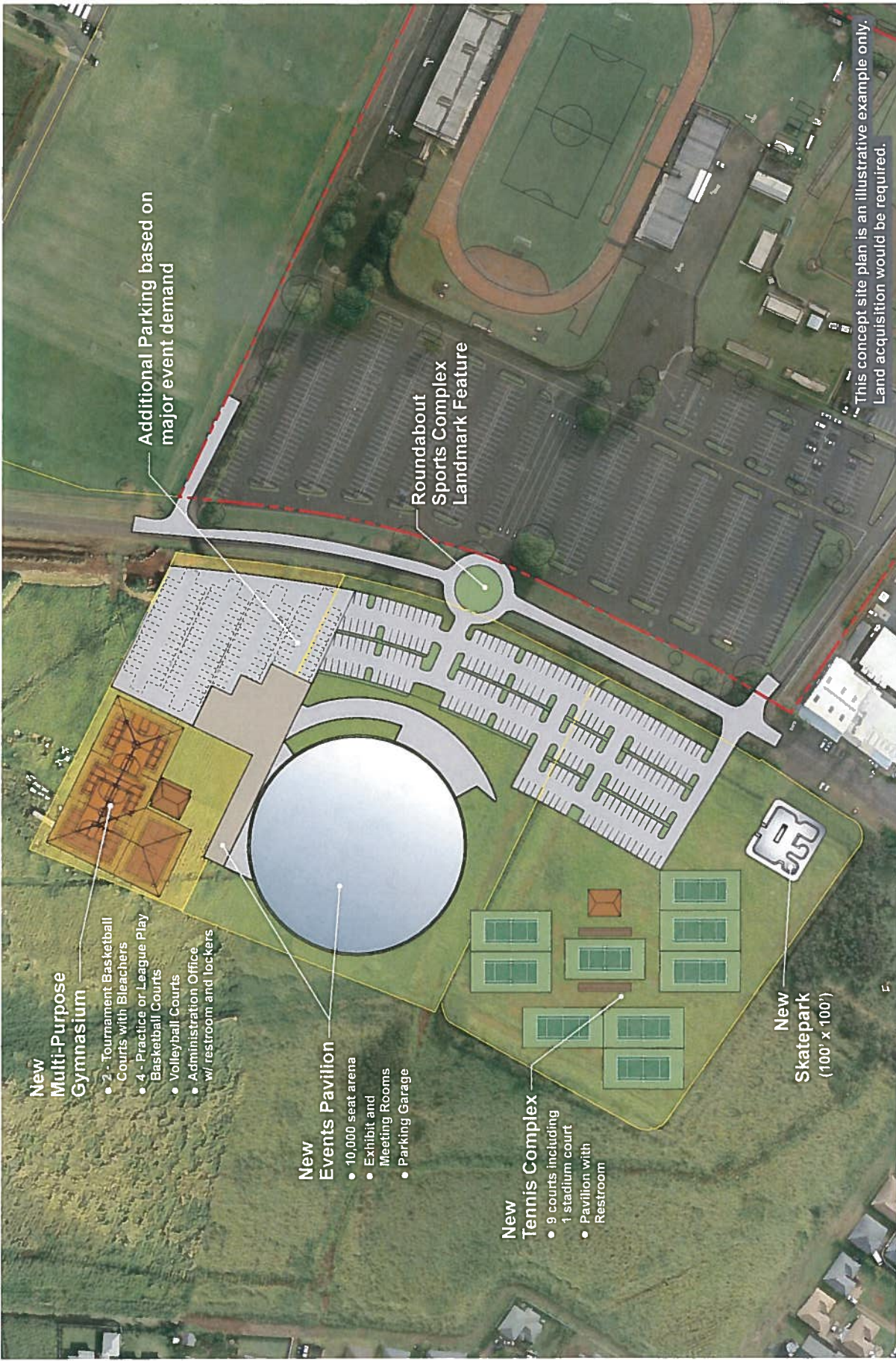
This concept site plan is an illustrative example only. Land acquisition would be required.

FIGURE 33

### VIDINHA STADIUM CONCEPT SITE PLAN-Option 1

Kauai'i Parks & Recreation Master Plan • County of Kauai'i Department of Parks & Recreation • 2013





**New Multi-Purpose Gymnasium**

- 2 - Tournament Basketball Courts with Bleachers
- 4 - Practice or League Play Basketball Courts
- Volleyball Courts
- Administration Office w/ restroom and lockers

**New Events Pavilion**

- 10,000 seat arena
- Exhibit and Meeting Rooms
- Parking Garage

**New Tennis Complex**

- 9 courts including 1 stadium court
- Pavilion with Restroom

**New Skatepark (100' x 100')**

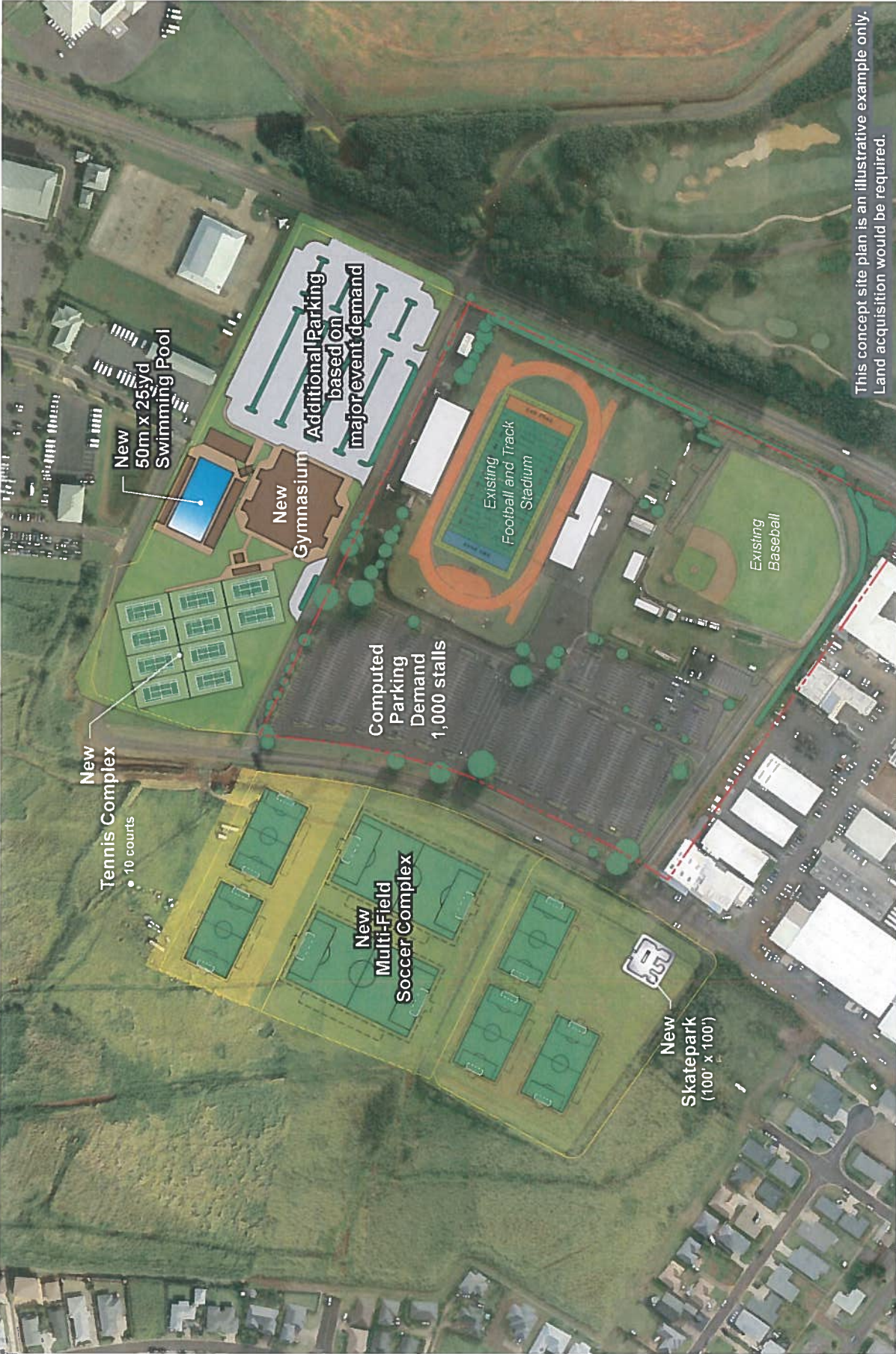
Additional Parking based on major event demand

Roundabout Sports Complex Landmark Feature

This concept site plan is an illustrative example only. Land acquisition would be required.

**VIDINHA STADIUM CONCEPT SITE PLAN-Option 2**

Kaua'i Parks & Recreation Master Plan • County of Kaua'i Department of Parks & Recreation • 2013



This concept site plan is an illustrative example only. Land acquisition would be required.

FIGURE 35

VIDINHA STADIUM CONCEPT SITE PLAN-Option 3

Kauai'i Parks & Recreation Master Plan • County of Kauai'i Department of Parks & Recreation • 2013



## Wailua Golf Course

**Type:** Special Use Area  
**TMK:** 3-9-002: 004, 005, 006, 032, 3-9-005: 001, and 3-9-006: 023  
**Area:** 107.4 acres

**Facilities:** Golf course, driving range, clubhouse, maintenance building

**Projects Underway:** A new maintenance building was completed in 2011. Construction of exterior aprons for the maintenance building, replacement of the driving range poles and net, and replacement of existing water lines are expected to begin soon.

**Other Proposed Improvements:** The parcel located immediately south of the golf course is currently used for motocross activities. When the motocross track relocates to a site in the Kalepa foothills, the vacated site is proposed for a youth-oriented golf course. As part of this project, additional irrigation and a maintenance support facility would be needed.



Wailua Golf Course

## War Memorial Convention Hall

**Type:** Special Use Area  
**TMK:** 3-6-002: 009  
**Area:** 9.0 acres

**Facilities:** Auditorium, special events/exhibition hall, kitchen, administrative office

**Proposed Improvements:** The War Memorial Convention Hall is a popular venue for social events with strong bookings up to a year in advance. The auditorium is undergoing major renovations with replacement of seats and stage curtains. The special events hall is also being renovated with new counters and windows. Several improvements are proposed to further modernize the War Memorial so that it better meets community needs.

The number of parking spaces at the back of the building is insufficient to accommodate concurrent events at the auditorium and special events hall or when games are being played at the Lihue District Park ballfields. This master plan proposes to expand the number of stalls by enlarging the paved parking lot and restriping. Another option is to construct a deck to provide a second level of parking.

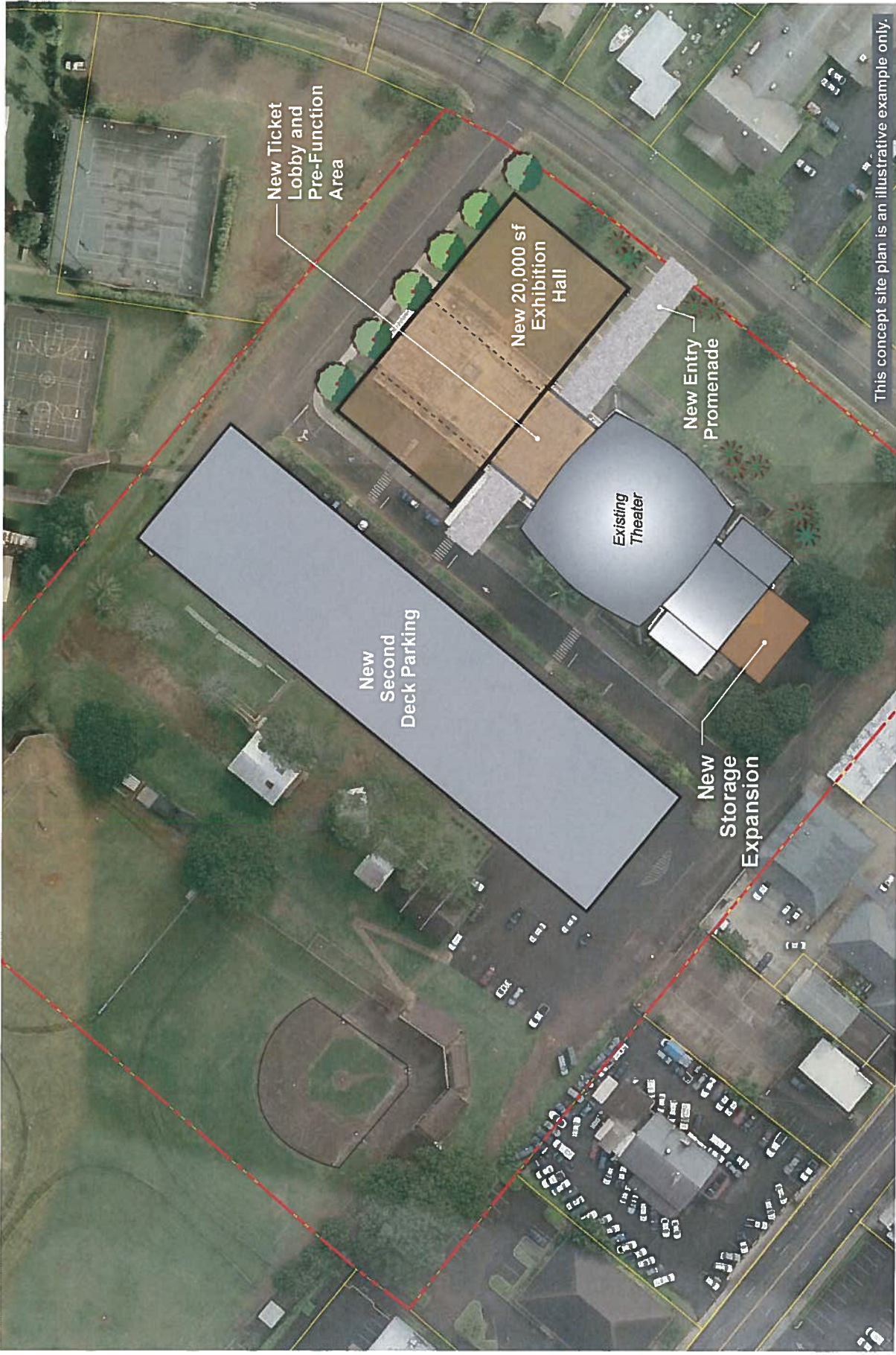
The convention hall is constrained by limited floor space. Therefore, this master plan includes two options for expanding interior space. One option is to enclose the outdoor space between the main building and rear parking lot, and enclose a portion of the broad promenade at the front of the building. A larger scale option

is to reconstruct the existing special events hall with a two-story structure. (See concept site plans in Figures 36 and 37.)

On the auditorium side, this master plan proposes a new storage area for more efficient operations and maintenance.



*War Memorial Convention Hall*



This concept site plan is an illustrative example only.

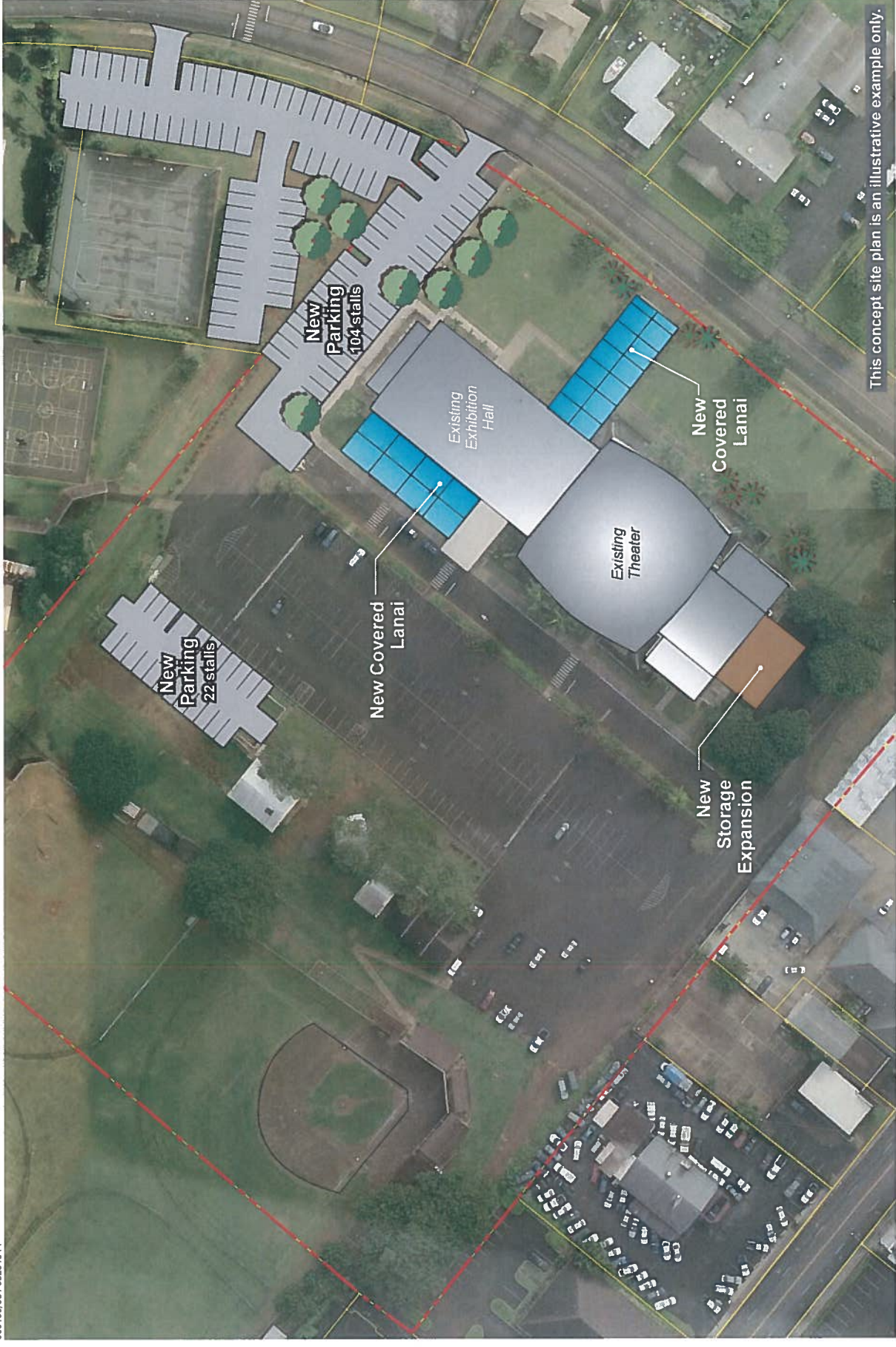


# KAUAI WAR MEMORIAL CONCEPT SITE PLAN-Option 1

Kauai Parks & Recreation Master Plan • County of Kauai Department of Parks & Recreation • 2013

FIGURE  
**36**

090103/061 03251314



This concept site plan is an illustrative example only.

FIGURE  
**37**

# KAUAI WAR MEMORIAL CONCEPT SITE PLAN-Option 2

Kauai Parks & Recreation Master Plan • County of Kauai Department of Parks & Recreation • 2013



## **Wiliko Park**

**Type:** Neighborhood Park

**TMK:** 3-7-010: 080

**Area:** 2.3 acres

**Facilities:** Basketball court, open playfield

**Projects Underway:** Resurfacing of the basketball court is currently in progress.

**Other Proposed Improvements:** Playground equipment for a children's play area and a small comfort station are proposed for Wiliko Park. The restroom facility was requested for park users and for those occasions when the park serves as an incident assembly area for King Kaumuali'i Elementary School.



*Wiliko Park*

*This page intentionally left blank*