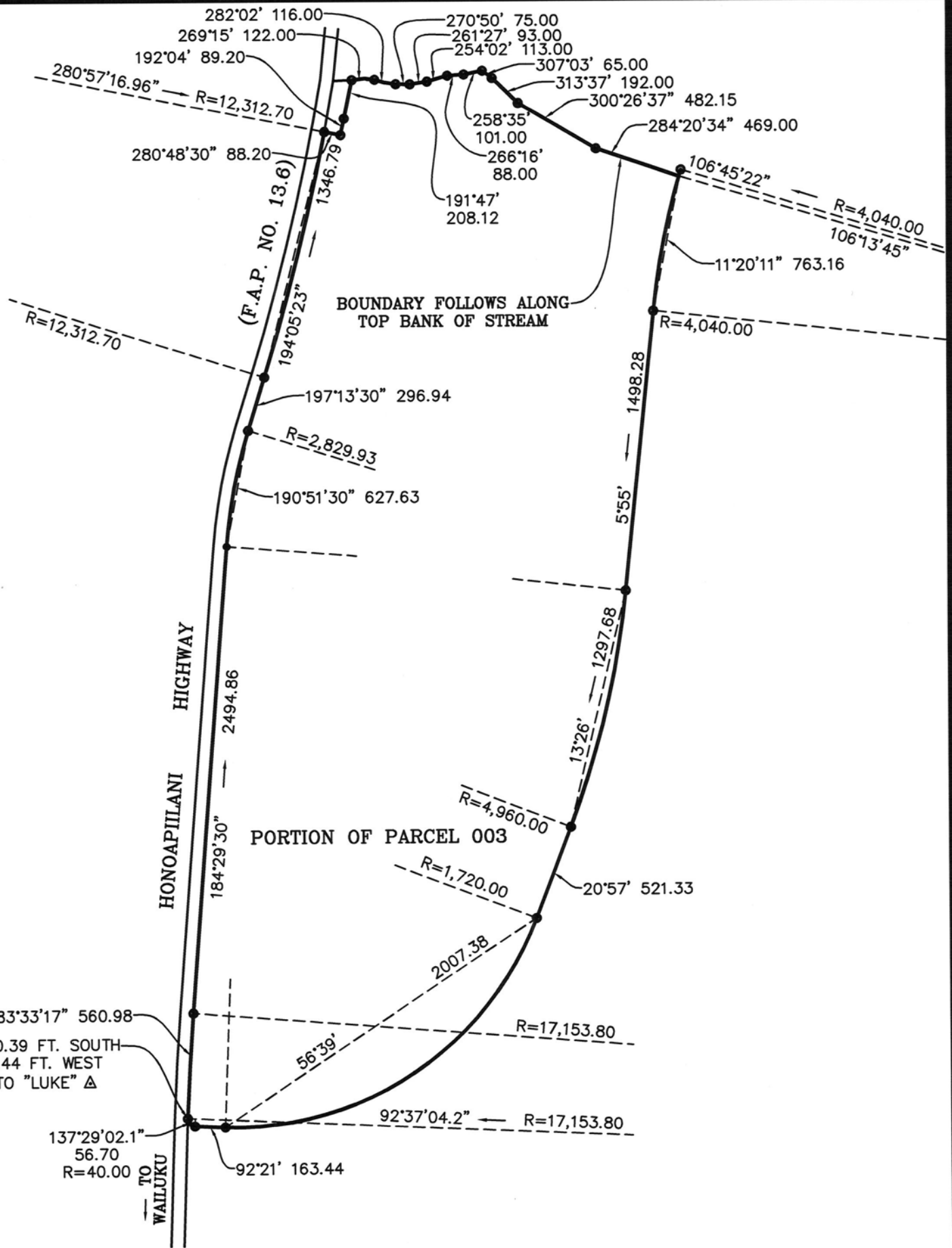
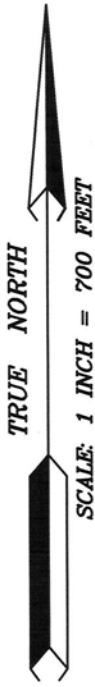




APPENDIX R
District Boundary Amendment Petition Maps





TMK: (2) 3-6-002: PORTION OF 003

TOTAL AREA = 236.326 ACRES

LAND USE DISTRICT BOUNDARY AMENDMENT MAP NO.

FROM: AGRICULTURE
TO: URBAN

APPROVED:

COUNTY CLERK

PUBLIC HEARING:
ADOPTED-COUNCIL:
ADOPTED-MAYOR:
ORDINANCE:

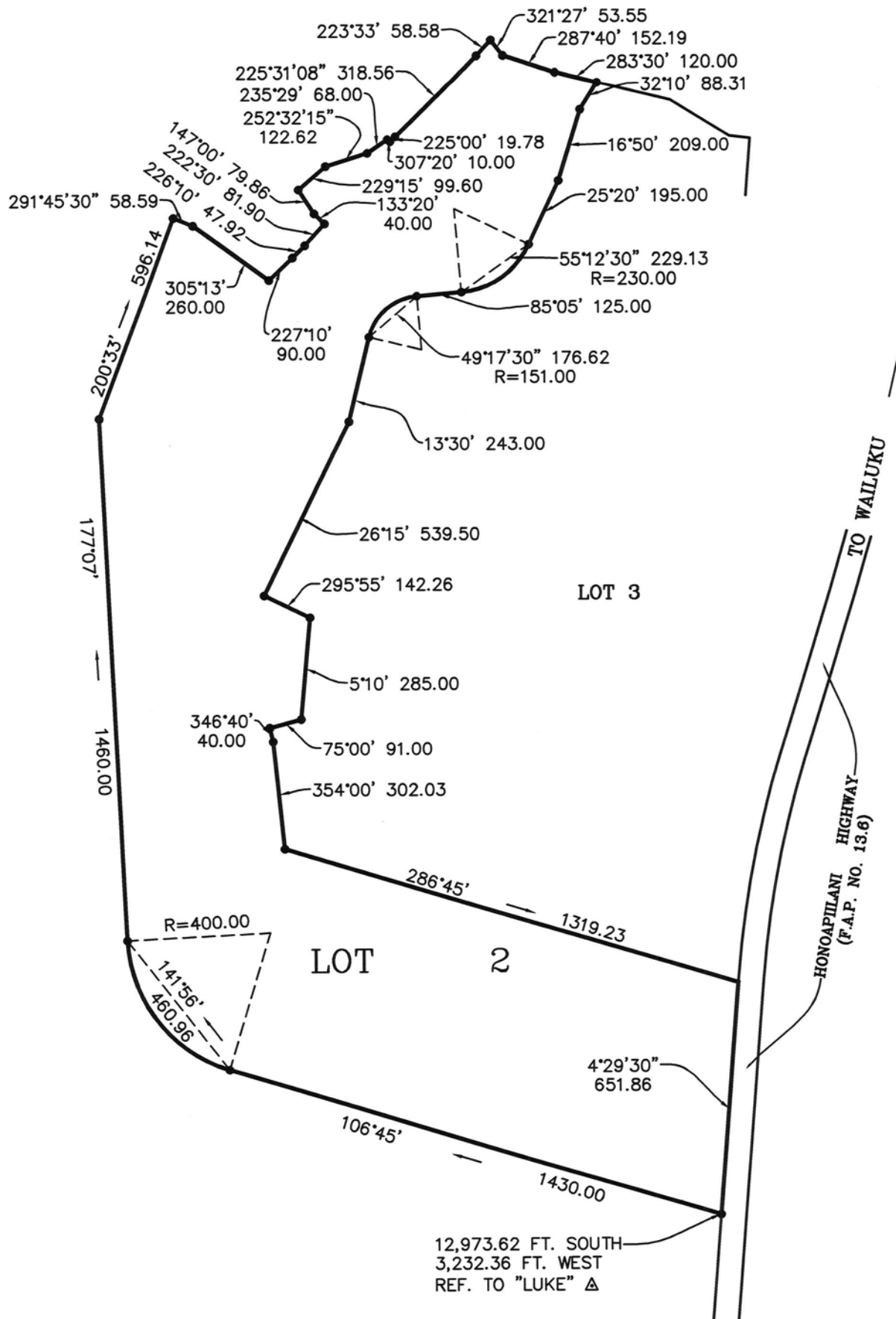
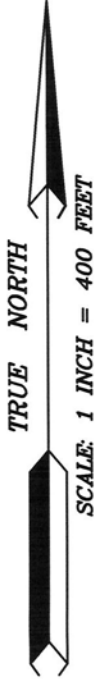
APPROVED:

PLANNING DIRECTOR

DATE: MAY 29, 2014

SCALE: 1" = 700'

OFFICE OF THE COUNTY CLERK
200 HIGH STREET, WAILUKU, MAUI, HAWAII 96793



TMK: (2) 3-6-004: 006

TOTAL AREA= 53.775 ACRES

LAND USE DISTRICT BOUNDARY AMENDMENT MAP NO.

FROM: AGRICULTURE
TO: URBAN

APPROVED: _____
COUNTY CLERK

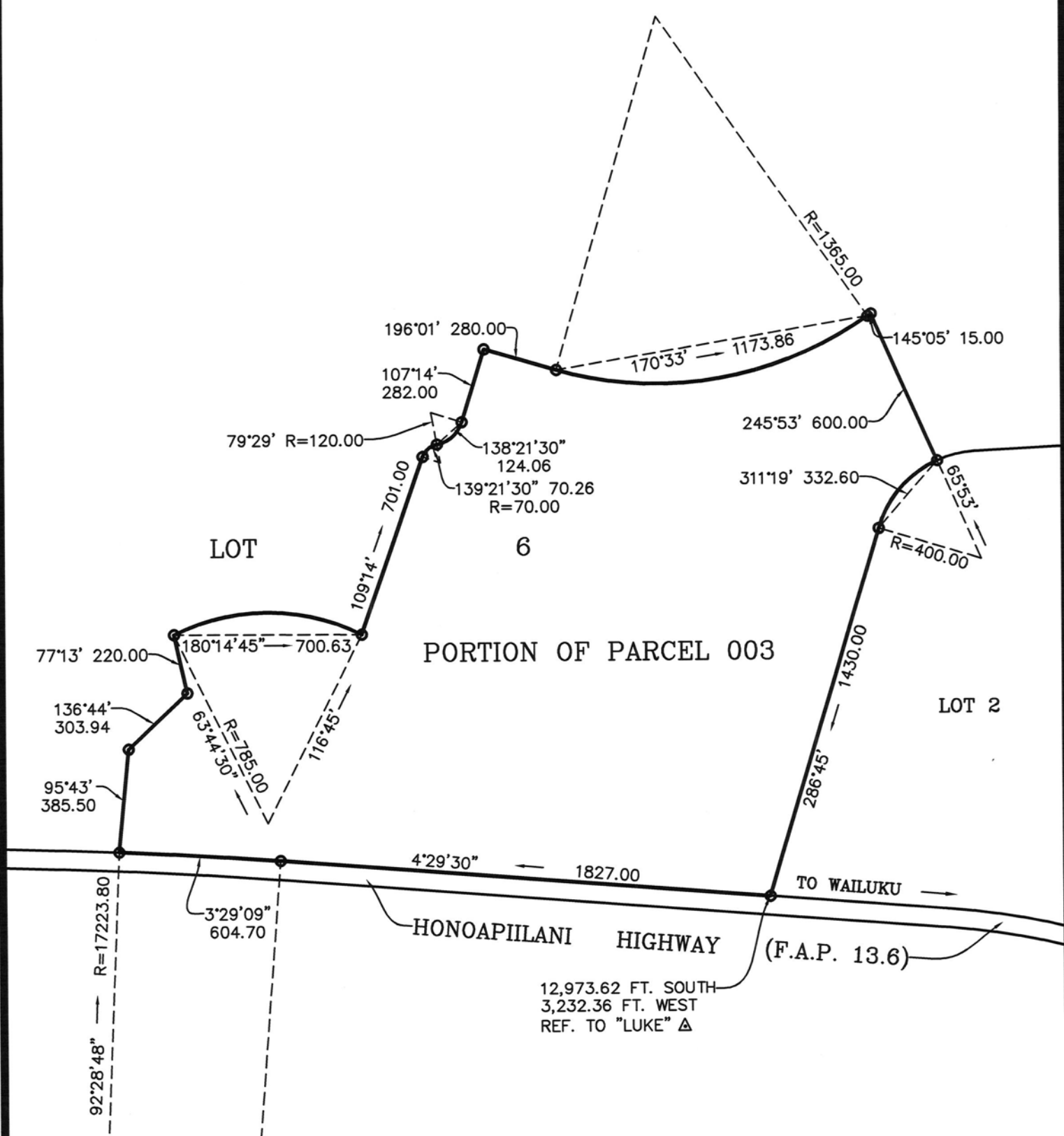
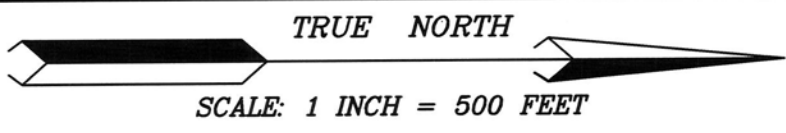
PUBLIC HEARING:
ADOPTED—COUNCIL:
ADOPTED—MAYOR:
ORDINANCE:

APPROVED: _____
PLANNING DIRECTOR

DATE: MAY 29, 2014

SCALE: 1" = 400'

OFFICE OF THE COUNTY CLERK
200 HIGH STREET, WAILUKU, MAUI, HAWAII 96793



TMK:(2) 3-6-004: PORTION OF 003 TOTAL AREA= 92.394 ACRES

LAND USE DISTRICT BOUNDARY AMENDMENT MAP NO.

FROM: AGRICULTURE
TO: RURAL

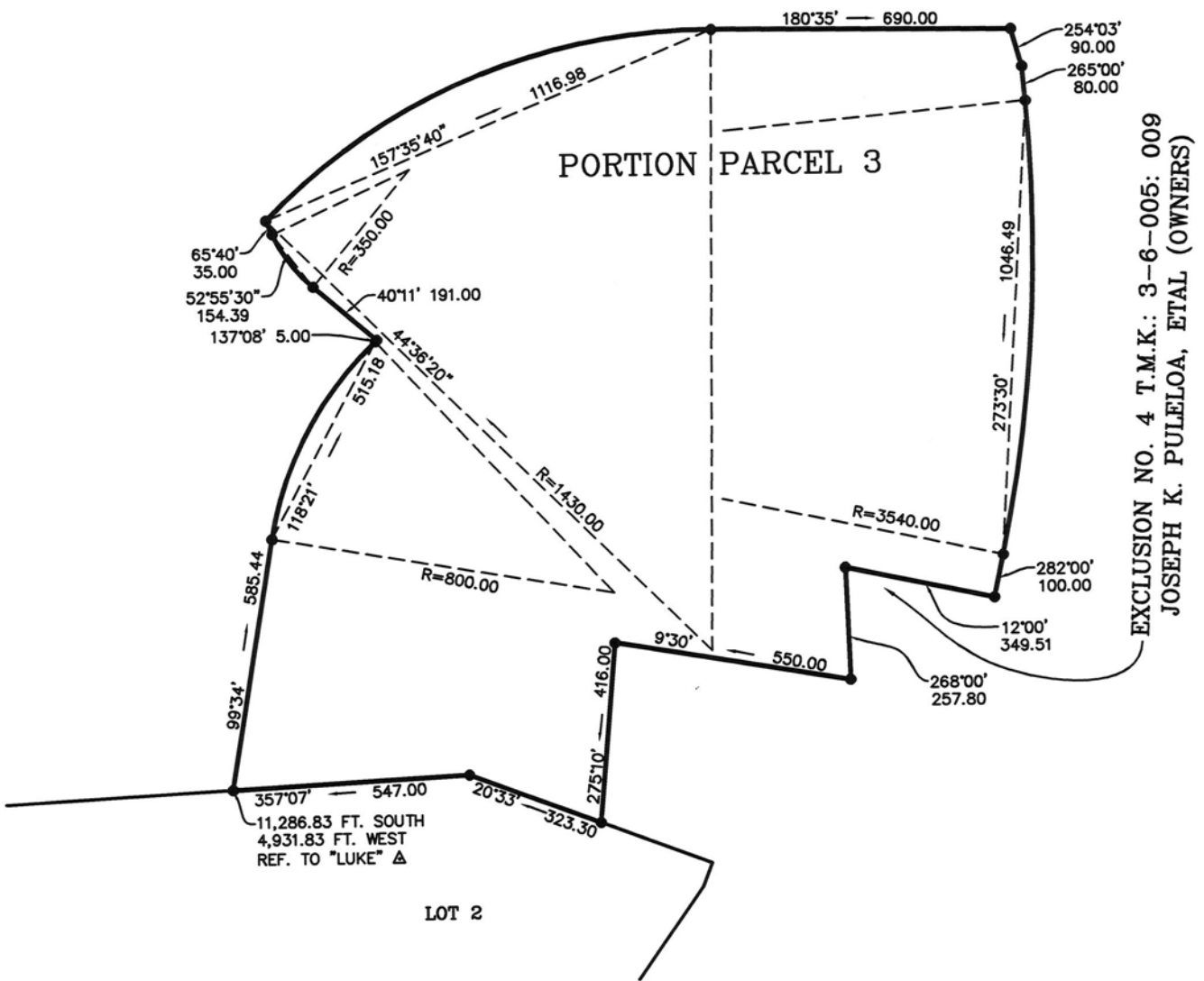
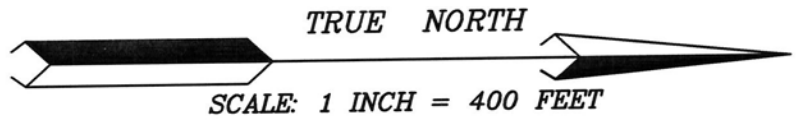
APPROVED: _____
COUNTY CLERK

PUBLIC HEARING:
ADOPTED-COUNCIL:
ADOPTED-MAYOR:
ORDINANCE:

APPROVED: _____
PLANNING DIRECTOR

DATE: MAY 28, 2014 SCALE: 1" = 500'

OFFICE OF THE COUNTY CLERK
200 HIGH STREET, WAILUKU, MAUI, HAWAII 96793



TMK: (2) 3-6-004: PORTION OF 003

TOTAL AREA= 57.454 ACRES

LAND USE DISTRICT BOUNDARY AMENDMENT MAP NO.

FROM: AGRICULTURE
TO: RURAL

APPROVED:

COUNTY CLERK

PUBLIC HEARING:
ADOPTED—COUNCIL:
ADOPTED—MAYOR:
ORDINANCE:

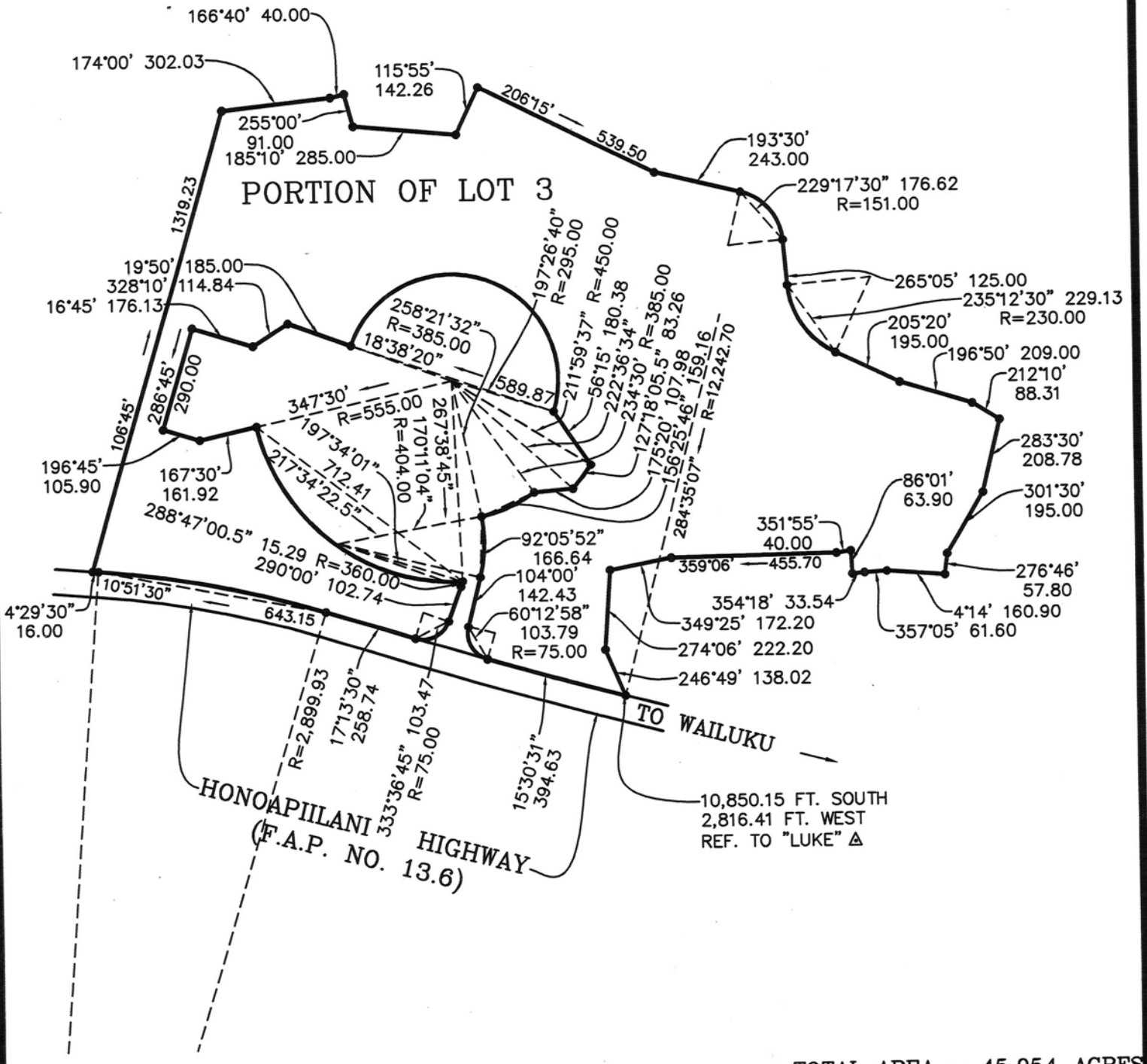
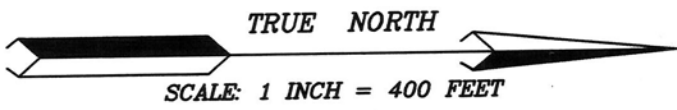
APPROVED:

PLANNING DIRECTOR

DATE: MAY 28, 2014

SCALE: 1" = 400'

OFFICE OF THE COUNTY CLERK
200 HIGH STREET, WAILUKU, MAUI, HAWAII 96793



TMK: (2) 3-6-005: PORTION OF 007

TOTAL AREA = 45.054 ACRES

LAND USE DISTRICT BOUNDARY AMENDMENT MAP NO.

FROM: AGRICULTURE
TO: URBAN

APPROVED: _____
COUNTY CLERK

APPROVED: _____
PLANNING DIRECTOR

PUBLIC HEARING:
ADOPTED-COUNCIL:
ADOPTED-MAYOR:
ORDINANCE:

DATE: MAY 29, 2014 SCALE: 1" = 400'

OFFICE OF THE COUNTY CLERK
200 HIGH STREET, WAILUKU, MAUI, HAWAII 96793