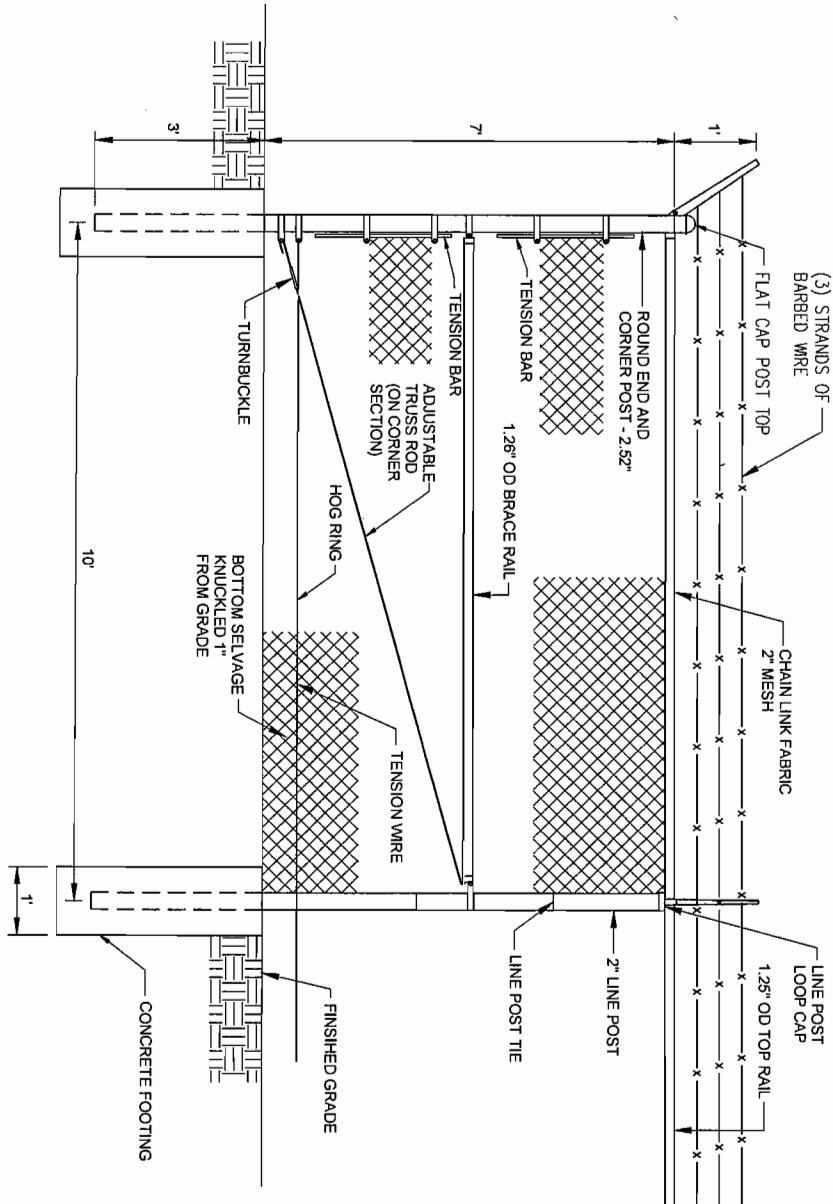


THIRD ANGLE PROJECTION DIMENSIONING AND TOLERANCING PER ANSI Y14.5-2018 UNLESS OTHERWISE SPECIFIED: DIMENSIONS IN INCHES DECIMALS TO THREE PLACES ANGLES TO TWO PLACES		FILE Power Xpert Solar 1670 Inverter Concrete Pad Details	
SYMBOL DEFINITIONS PER DOCUMENT EG-0503 PRELIMINARY	MATERIAL DR WRN 26Mar2013 CME WRN APP WRN WORKFLOW S-Max	REVISION C 50-40443 P1	SHEET 2 OF 2 10-Dec-12

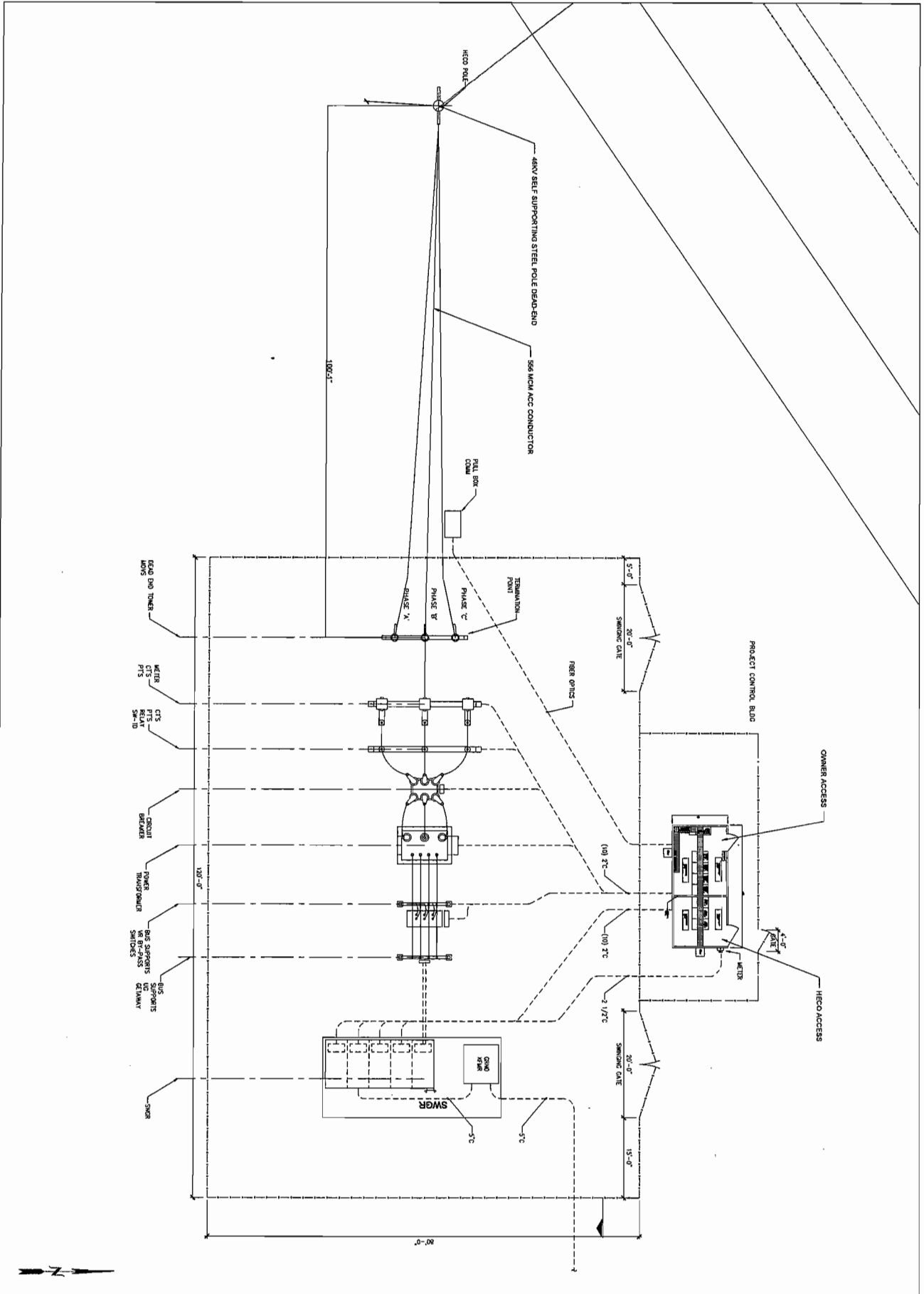
- NOTES:
1. CONCRETE PAD - DIMENSIONS SHOWN ARE SUGGESTED MINIMUM 3' FROM DOOR ACCESS. APPLICABLE CODES AND/OR CUSTOMER REQUIREMENTS SHALL SUPERSEDE PERIPHERAL DIMENSIONS INDICATED. SEE PAGE 1, NOTE 1.
 2. MOUNTING HARDWARE - LOCATIONS IN AREAS INDICATED. SEE PAGE 1, NOTE 2 FOR TYPES.
 3. CONDUIT - POWER I/O AND COMMUNICATION CONDUIT STUB LOCATIONS SHOWN AS REFERENCED FROM UNIT PLAN OUTLINE. SEE PAGE 1 FOR ADDITIONAL COMMENTS.

287.6
 CUSTOMER DEFINED
 SEE NOTE 1



7 HIGH CHAIN LINK FENCE
WITH BARBED WIRE TOP
SCALE: N.T.S.

CHAIN LINK FENCE WITH BARB WIRE DETAIL SHEET C600	<p>Q CELLS a Hanulys company 95 Federal St. San Francisco CA 94107 8001 Irvine Center Drive, ste 1250 Irvine CA 92616</p>	Ho'ohana Kunle, Howell		PRELIMINARY LAYOUT	MMDDYY	HP
				A REV No:	DESCRIPTION	DATE



PROJECT
SUBSTATION
DETAILS

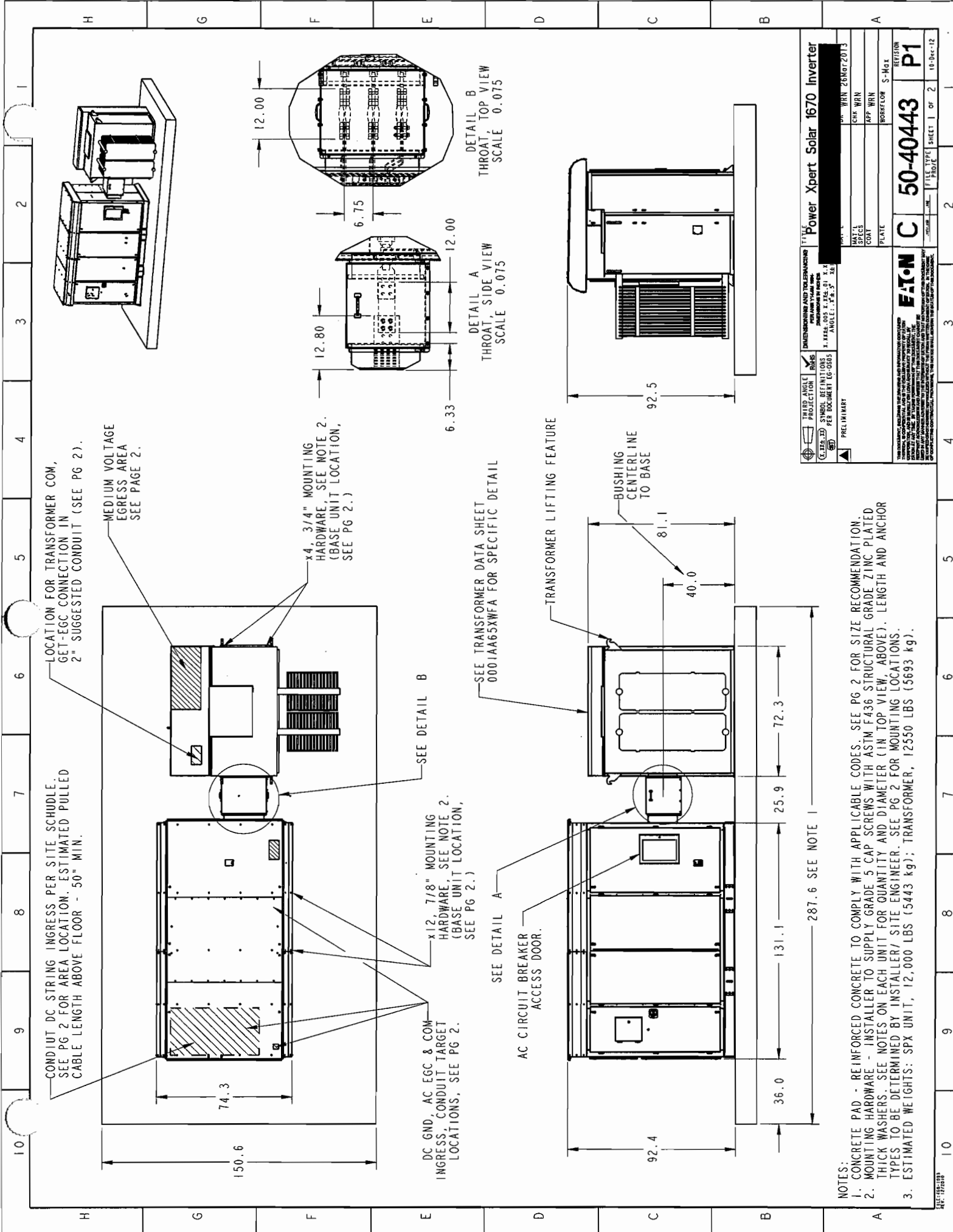
Q CELLS
 a Hanwha Company
 95 Federal St.
 San Francisco CA 94107
 8001 Irvine Center Drive, ste 1250
 Irvine CA 92618

Ho'ohana
 Maui, Hawaii



REV No	DESCRIPTION	DATE	DRW/CHKD	APPD
A	PRELIMINARY LAYOUT	01/14/24	HR	

SHEET
E811



THIRD ANGLE PROJECTION DIMENSIONS AND TOLERANCES PER ANSI Y14.5M-1993 UNLESS OTHERWISE SPECIFIED: 1. DIMENSIONS ARE IN INCHES AND DECIMAL FRACTIONS 2. DIMENSIONS ARE TO UNLESS OTHERWISE SPECIFIED 3. ANGLES ARE IN DEGREES, MINUTES AND SECONDS 4. SURFACE FINISH IS UNLESS OTHERWISE SPECIFIED 5. UNLESS OTHERWISE SPECIFIED, DIMENSIONS ARE TO CENTERLINE 6. DIMENSIONS ARE TO UNLESS OTHERWISE SPECIFIED 7. DIMENSIONS ARE TO UNLESS OTHERWISE SPECIFIED 8. DIMENSIONS ARE TO UNLESS OTHERWISE SPECIFIED 9. DIMENSIONS ARE TO UNLESS OTHERWISE SPECIFIED 10. DIMENSIONS ARE TO UNLESS OTHERWISE SPECIFIED		PRELIMINARY
REVISIONS NO. DATE BY REVISION 1 08-11-12 WRN 28NOT2013 2 08-11-12 WRN 28NOT2013 3 08-11-12 WRN 28NOT2013 4 08-11-12 WRN 28NOT2013	DESIGN AND TOLERANCE TITLE: Power Xpert Solar 1670 Inverter DRAWN: WRN CHECKED: WRN APPROVED: WRN DATE: 08-11-12	FILE TYPE SHEET 1 OF 2 PROJECT 50-40443 REVISED P1 10-04-c-12

NOTES:
 1. CONCRETE PAD - REINFORCED CONCRETE TO COMPLY WITH APPLICABLE CODES. SEE PG 2 FOR SIZE RECOMMENDATION.
 2. MOUNTING HARDWARE - INSTALLER TO SUPPLY GRADE 5 CAP SCREWS WITH ASTM F436 STRUCTURAL GRADE ZINC PLATED THICK WASHERS. SEE NOTES ON EACH UNIT FOR QUANTITY AND DIAMETER (IN TOP VIEW, ABOVE). LENGTH AND ANCHOR TYPES TO BE DETERMINED BY INSTALLER/ SITE ENGINEER. SEE PG 2 FOR MOUNTING LOCATIONS.
 3. ESTIMATED WEIGHTS: SPX UNIT, 12,000 LBS (5443 kg); TRANSFORMER, 12550 LBS (5693 kg).