



STATE OF HAWAII
DEPARTMENT OF BUSINESS, ECONOMIC DEVELOPMENT & TOURISM

LAND USE COMMISSION

Room 104, Old Federal Building
335 Merchant Street
Honolulu, Hawaii 96813
Telephone: 587-3822

July 19, 1995

NOTIFICATION OF BOUNDARY AMENDMENT
DECISIONS FILED BY THE STATE LAND USE COMMISSION

To all concerned agencies:

The Findings of Fact, Conclusions of Law, and Decision and Order for the following boundary amendment petitions have been filed by the Land Use Commission:

<u>Petition Docket No.</u>	<u>Boundary Amendment Requested</u>	<u>LUC Action on June 23, 1995</u>	<u>Date of Decision and Order</u>
BR94-713 OFFICE OF STATE PLANNING	To reclassify approximately 932 acres from Agricultural to Conservation at Halehaku and Peahi Ahupuaa, Makawao, Maui, Hawaii	Approved approximately 932 acres at Halehaku and Peahi Ahupuaa, Makawao, Maui, Hawaii, TMK Nos.: 2-8-8: por. 7 and 2-8-8: 12 (see map attached)	June 28, 1995
BR94-709 OFFICE OF STATE PLANNING	To reclassify approximately 273 acres from Agricultural to Conservation at Kaapahu, Hana, Maui, Hawaii	Approved approximately 273 acres at Kaapahu, Hana, Maui, Hawaii, TMK Nos.: 1-6-10: por. 1 and por. 6 (see map attached)	June 28, 1995

Should you have any questions, please do not hesitate to contact this office.

Sincerely,

ESTHER UEDA
Executive Officer

EU:th

Att.

NOTIFICATION OF BOUNDARY AMENDMENT DECISIONS BY LUC

Concerned Agencies

State (all petitions)

1. Office of State Planning - (1) Gregory G.Y. Pai, Ph.D.
(2) LUD-Abe Mitsuda
2. Dept. of Transportation - Office of the Director
3. Board of Land & Natural Resources - Office of the Chairman
4. Dept. of Education - Information Systems Branch
5. Office of Environmental Quality Control
6. USDA Soil Conservation Service - Attention: Nicole Simmons
7. Board of Agriculture - Office of the Chairman
8. C&C, Dept. of Finance - Mapping Section
9. Deputy Attorney General - Rick Eichor, Esq.

City & County of Honolulu (Oahu petitions only)

1. Planning Department - Chief Planning Officer
2. Planning Department - Division Head,
Policy Analysis Division
3. Dept. of Land Utilization - Director
4. Planning Commission - Executive Secretary
5. Board of Water Supply - Manager and Chief Engineer
6. Dept. of Public Works - Director
7. C&C, Dept. of Finance - Property Assessment Section
8. C&C, Dept. of Finance - Property Technical Office

Hawaii County (Hawaii petitions only)

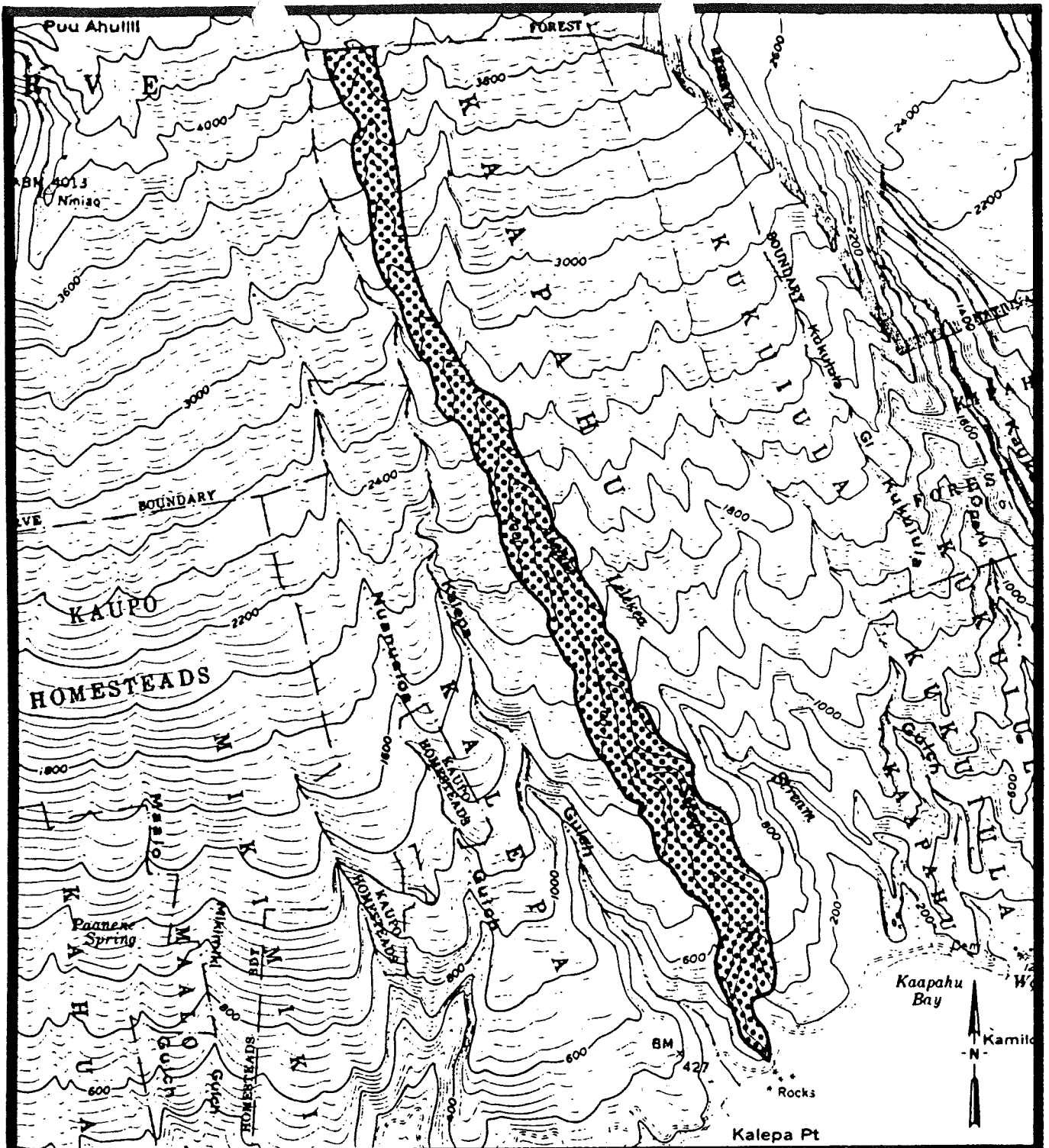
1. Planning Department - Director
2. Planning Commission - Chairman
3. Dept. of Water Supply
4. Dept. of Public Works
5. Real Property Tax Office

Maui County (Maui petitions only)

1. Planning Department - Director
2. Planning Commission - Chairman
3. Dept. of Water Supply
4. Dept. of Public Works
5. Real Property Tax Division

Kauai County (Kauai petitions only)

1. Planning Department - Director
2. Planning Commission - Chairman
3. Dept. of Water Supply
4. Dept. of Public Works
5. Real Property Division



LOCATION MAP

DOCKET NO. BR94-709 /

OFFICE OF STATE PLANNING, STATE OF HAWAII

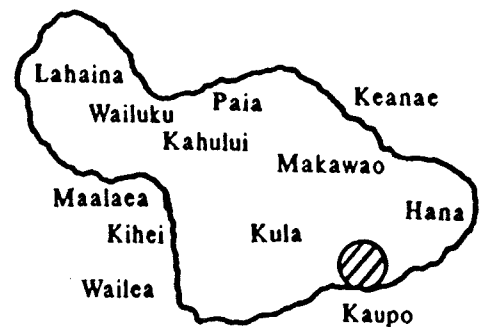
TAX MAP KEY: 1-6-10: por. 1 and por. 6

KAAPAHU, HANA, MAUI

SCALE: 1" = 2,000 ft. ±



APPROVED AREA



MAUI