

EXHIBIT B

Tax Map Key Description
for
Grove Farm Company, Incorporated
Līhu'e, Kaua'i

November 2012

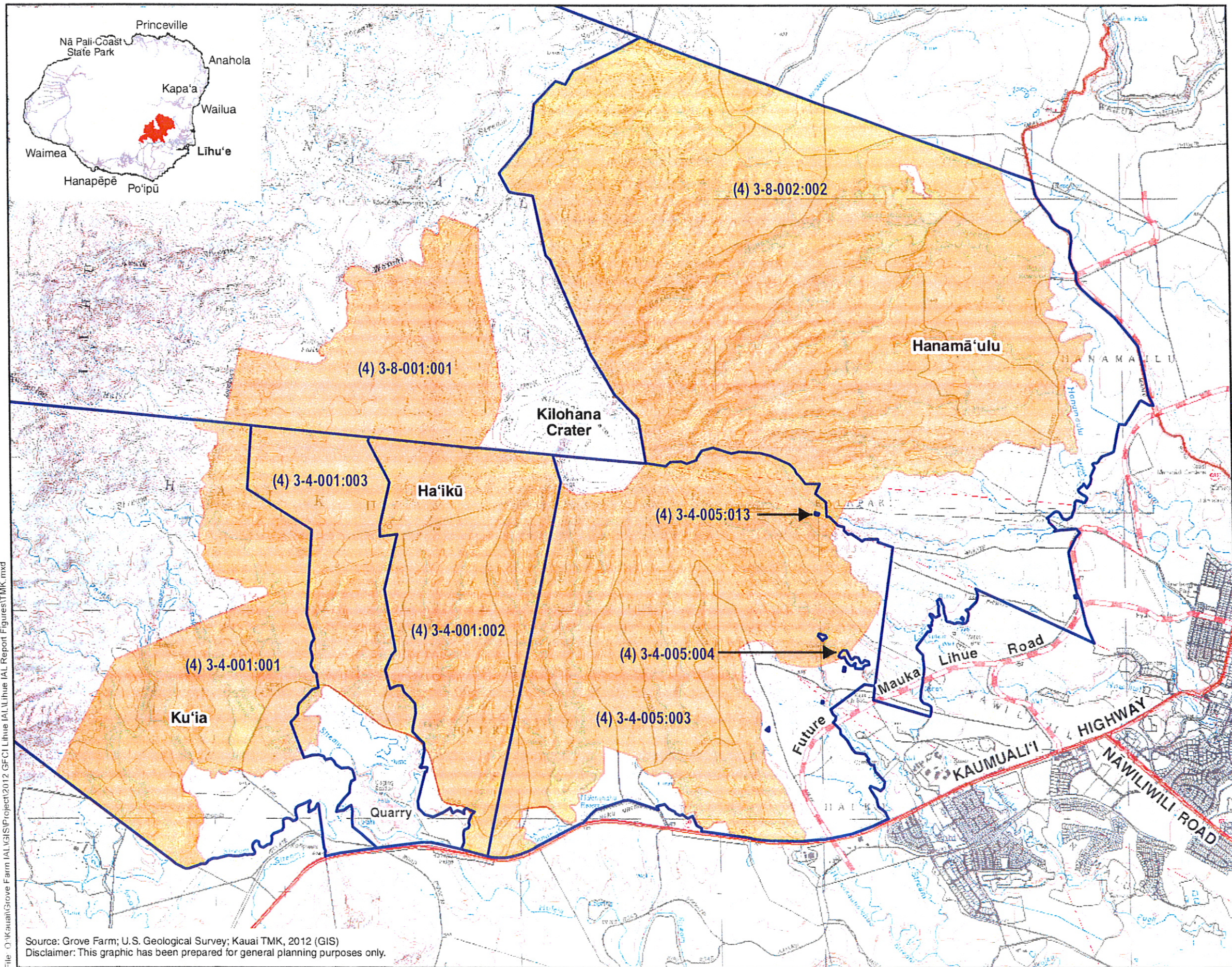
Tax Map Key Description

Approximately 10,266 acres of land owned by Grove Farm Company on Kaua'i are proposed to be designated as IAL. These lands are specifically described as TMK numbers: 3-4-01:01 (portion), 3-4-01:02 (portion), 3-4-01:03 (portion), 3-4-05:03 (portion), 3-4-05:04 (portion), 3-4-05:13, 3-8-01:01 (portion), and 3-8-02:02 (portion).

The following table shows a summary of TMK parcels and approximate acreage for the proposed IAL lands:

<i>TMK NUMBER</i>	<i>APPROXIMATE ACREAGE</i>
3-4-01:01 (Por.)	1,202.3
3-4-01:02 (Por.)	1,156.8
3-4-01:03 (Por.)	645.9
3-4-05:03 (Por.)	2,239.0
3-4-05:04 (Por.)	0.8
3-4-05:13	0.3
3-8-01:01 (Por.)	871.1
3-8-02:02 (Por.)	4,150.0
<i>TOTAL:</i>	<i>10,266.2</i>

Exhibit B illustrates the proposed IAL lands and the related Tax Map Key parcels. To illustrate the individual TMK parcels, Exhibits B-1, B-2, B-3, and B-4 are provided to identify the individual TMK parcels and portions thereof that are proposed to be designated IAL.



LEGEND

- IAL Lands Related TMK Parcels
- Proposed IAL Designation

EXHIBIT B DATE: 11/6/2012

TMK Parcel Map

LĪHU'E IAL

Grove Farm Land Company Island of Kauai

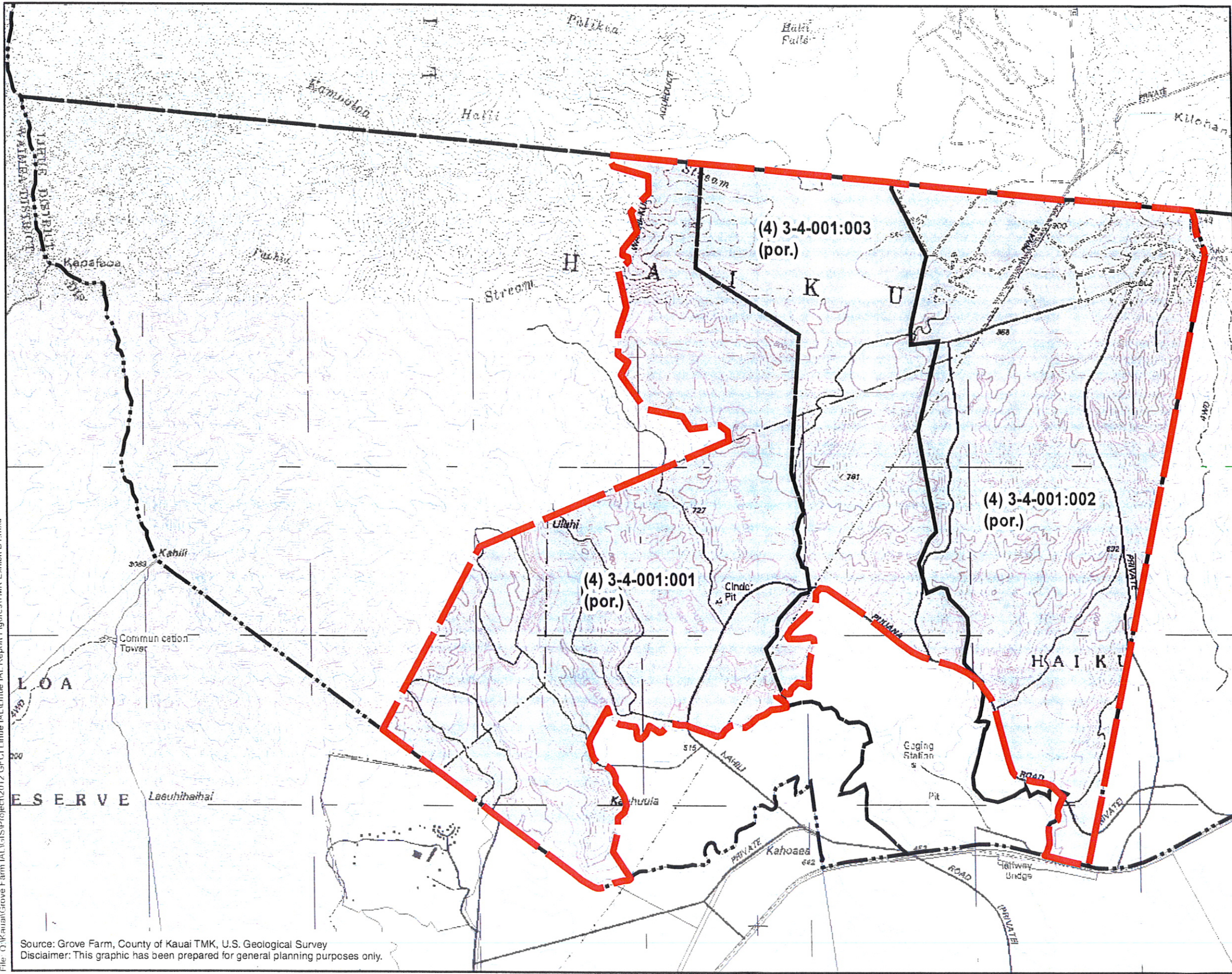
North Linear Scale (feet)

0 750 1,500 3,000


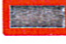
File: O:\Kauai\Grove Farm IAL\GIS\Project\2012\GFC1\Lihue IAL\Lihue IAL Report Figures\TMK.mxd

Source: Grove Farm; U.S. Geological Survey; Kauai TMK, 2012 (GIS)
 Disclaimer: This graphic has been prepared for general planning purposes only.

File: O:\Kauai\Grove Farm IAL\GIS\Project\2012 GFC\1 ihue IAL\Ihue IAL Report Figures\TMK Exhibit B1.mxd



LEGEND

-  TMK Parcel Boundary
-  Proposed IAL Designation

Note:

As of 11/28/2012, the shown TMK boundaries in Zone 3 - Section 4 - Plat 01 are confirmed to be current. However, the County of Kauai Tax Map for the same area is not up to date.

Since the current County Tax Map is unavailable, the parcel boundaries illustrated on this exhibit is based on the County GIS Data TMK layer.

Source: Grove Farm, County of Kauai TMK, U.S. Geological Survey
 Disclaimer: This graphic has been prepared for general planning purposes only.

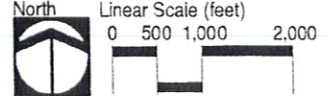

EXHIBIT B-1 DATE: 11/29/2012

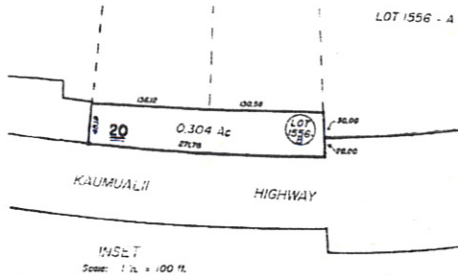
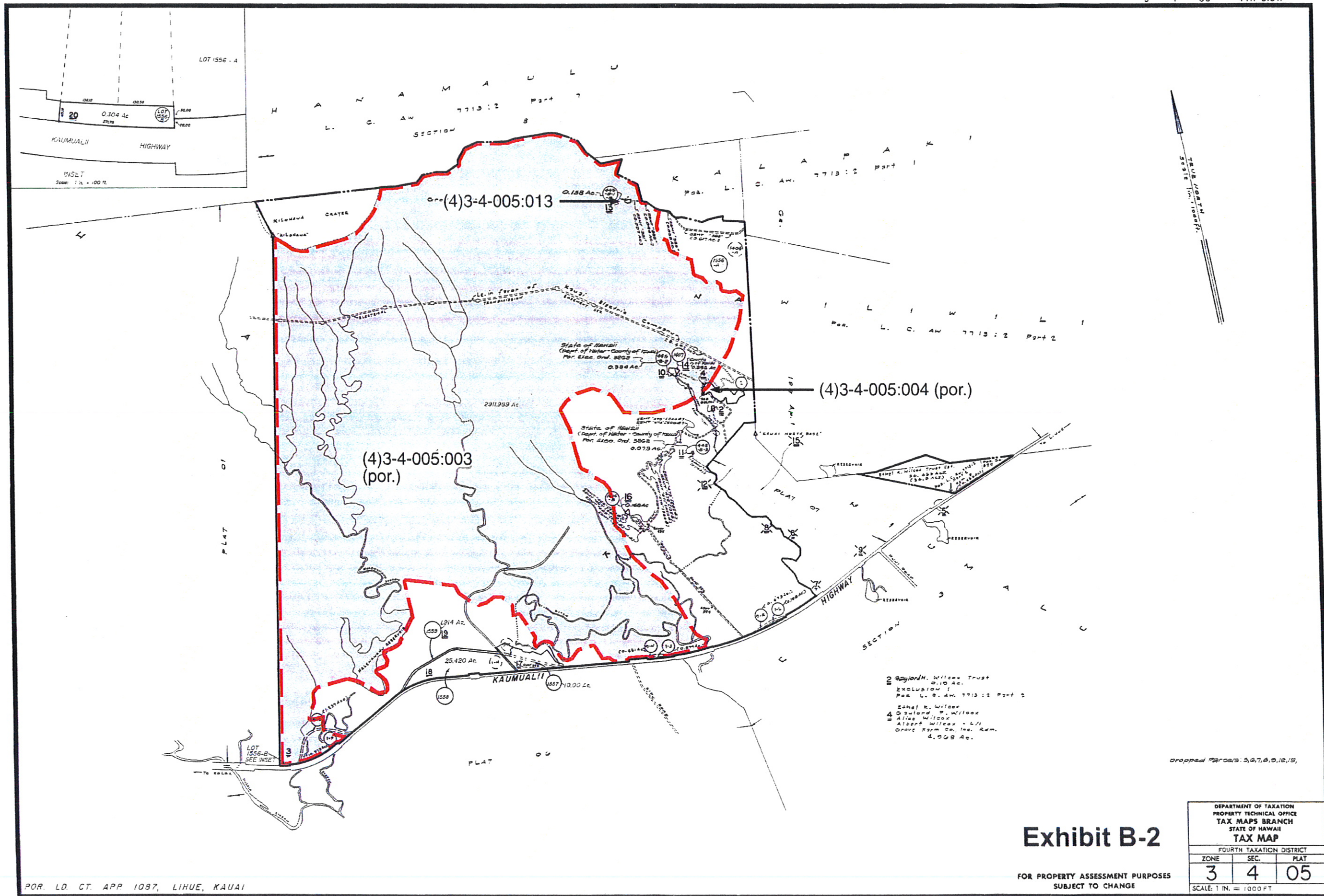
LĪHU'E IAL

Grove Farm Land Company Island of Kauai

North Linear Scale (feet)

0 500 1,000 2,000



00(4)3-4-005:013

(4)3-4-005:003 (por.)

(4)3-4-005:004 (por.)

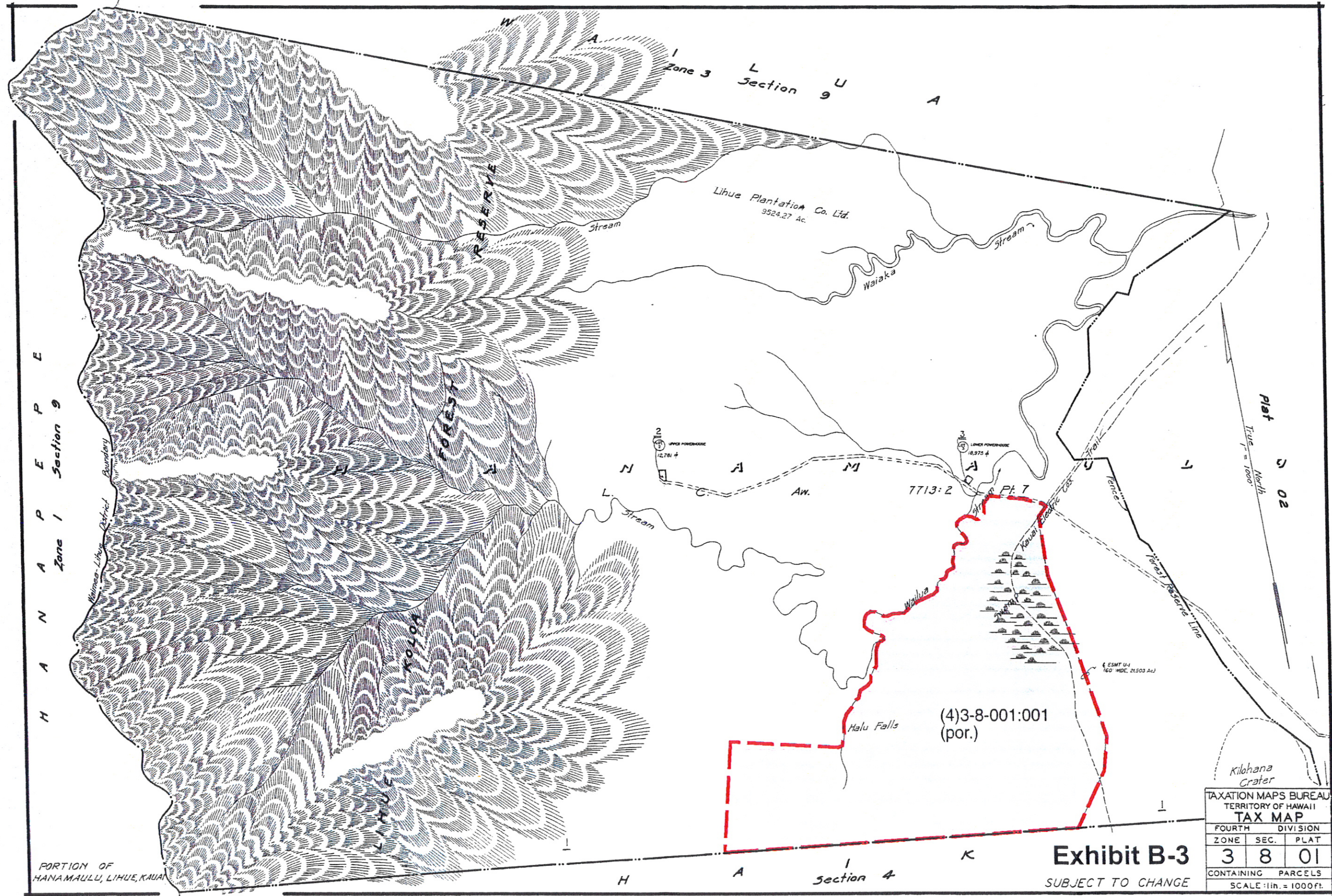
- 2 Bayard H. Wilcox Trust
0.10 Ac.
EXCLUSION 1
Poa L. C. AW 7713:2 Part 2
- 4 Eshel E. Wilcox
Osulard P. Wilcox
Alice Wilcox
Albert Wilcox - L/J
Orchard Farm Co., Inc. Rem.
4.008 Ac.

Dropped Parcels: 5, 6, 7, 8, 9, 12, 15

Exhibit B-2

FOR PROPERTY ASSESSMENT PURPOSES
SUBJECT TO CHANGE

DEPARTMENT OF TAXATION PROPERTY TECHNICAL OFFICE TAX MAPS BRANCH STATE OF HAWAII TAX MAP		
FOURTH TAXATION DISTRICT		
ZONE	SEC.	PLAT
3	4	05
SCALE: 1 IN. = 1000 FT.		



H A N A M A U L U
 Zone 1 Section 9
 E P E

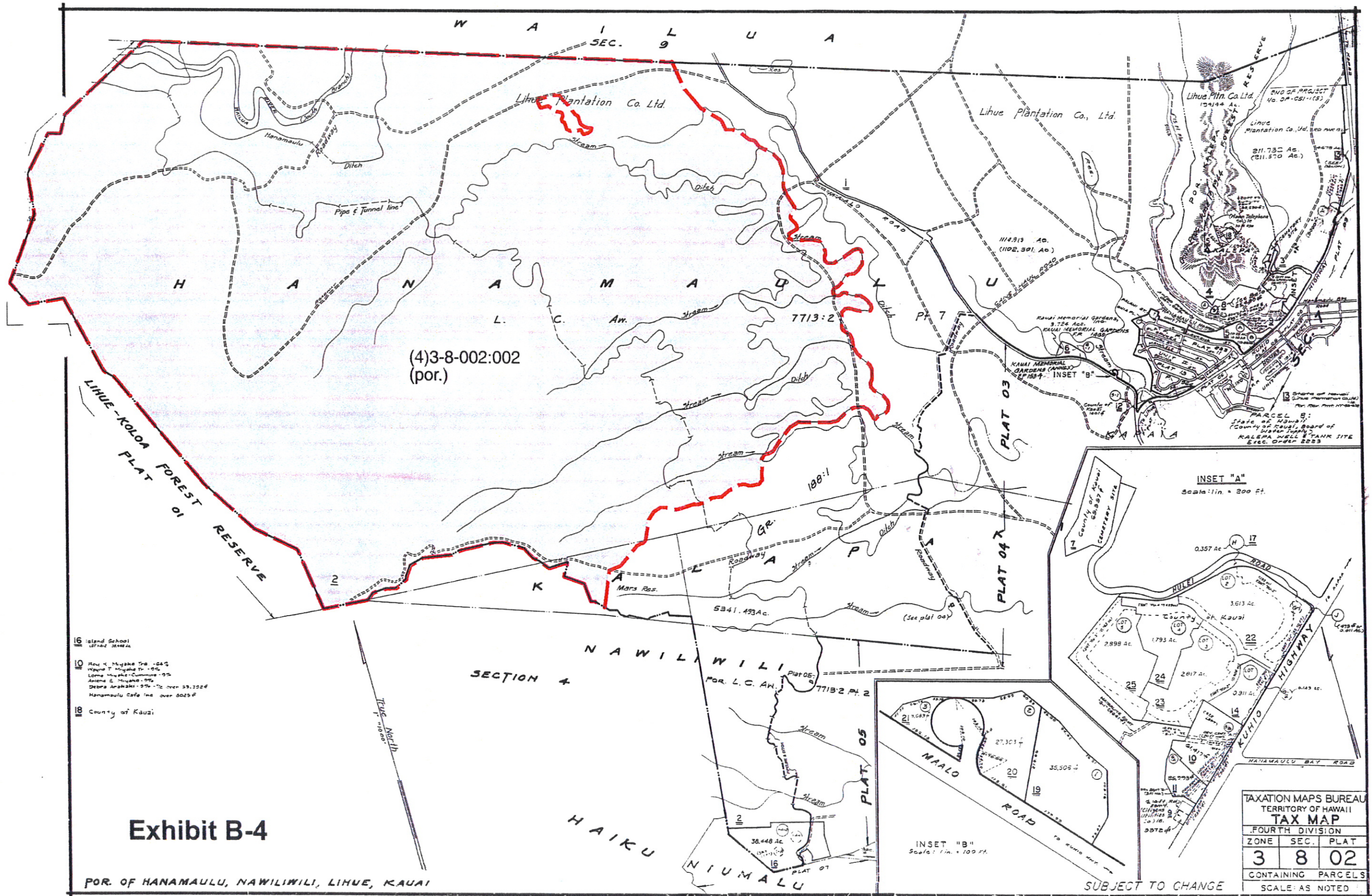
PORTION OF
HANAMAULU, LIHUE, KAUAI

Plat
 S 02
 True North
 1" = 1000'

Exhibit B-3

SUBJECT TO CHANGE

TAXATION MAPS BUREAU		
TERRITORY OF HAWAII		
TAX MAP		
FOURTH	DIVISION	
ZONE	SEC.	PLAT
3	8	01
CONTAINING PARCELS		
SCALE: 1 in. = 1000 ft.		



(4)3-8-002:002
(por.)

- 16 Island School 127-62 36422 Ac.
- 10 Rev. K. Miyake Tr. - 24%
- Wipone T. Miyake Tr. - 9%
- Loma Miyake-Common - 9%
- Ariene E. Miyake - 9%
- Desire Anakahi - 9% - 1/2 over 53,322 F
- Hanamaulu Safe Inc. over 5025 F
- 118 County of Kauai

Exhibit B-4

POR. OF HANAMAULU, NAWILIWILI, LIHUE, KAUAI

TAXATION MAPS BUREAU		
TERRITORY OF HAWAII		
TAX MAP		
FOURTH DIVISION		
ZONE	SEC.	PLAT
3	8	02
CONTAINING PARCELS		
SCALE: AS NOTED		

SUBJECT TO CHANGE

EXHIBIT C

Agricultural Land Assessment
for
Hā‘upu Land Company LLC
Hā‘upu, Kaua‘i

November 2012

Prepared for: Hā‘upu Land Company LLC
3-1850 Kaumuali‘i Highway
Līhu‘e, HI 96766

Prepared by: PBR Hawaii & Associates, Inc.
1001 Bishop Street, Suite 650
Honolulu, Hawai‘i 96813